

Plat 15 of 57

BOOK 15 PAGE 57

STATE OF CALIFORNIA
BUSINESS AND TRANSPORTATION AGENCY
DEPARTMENT OF TRANSPORTATION

RIGHT OF WAY MAPS OF
STATE HIGHWAY

In the City of Los Angeles on Foothill Blvd.(Rte 210 Hwy)
between Maclay St. and Paxton St.

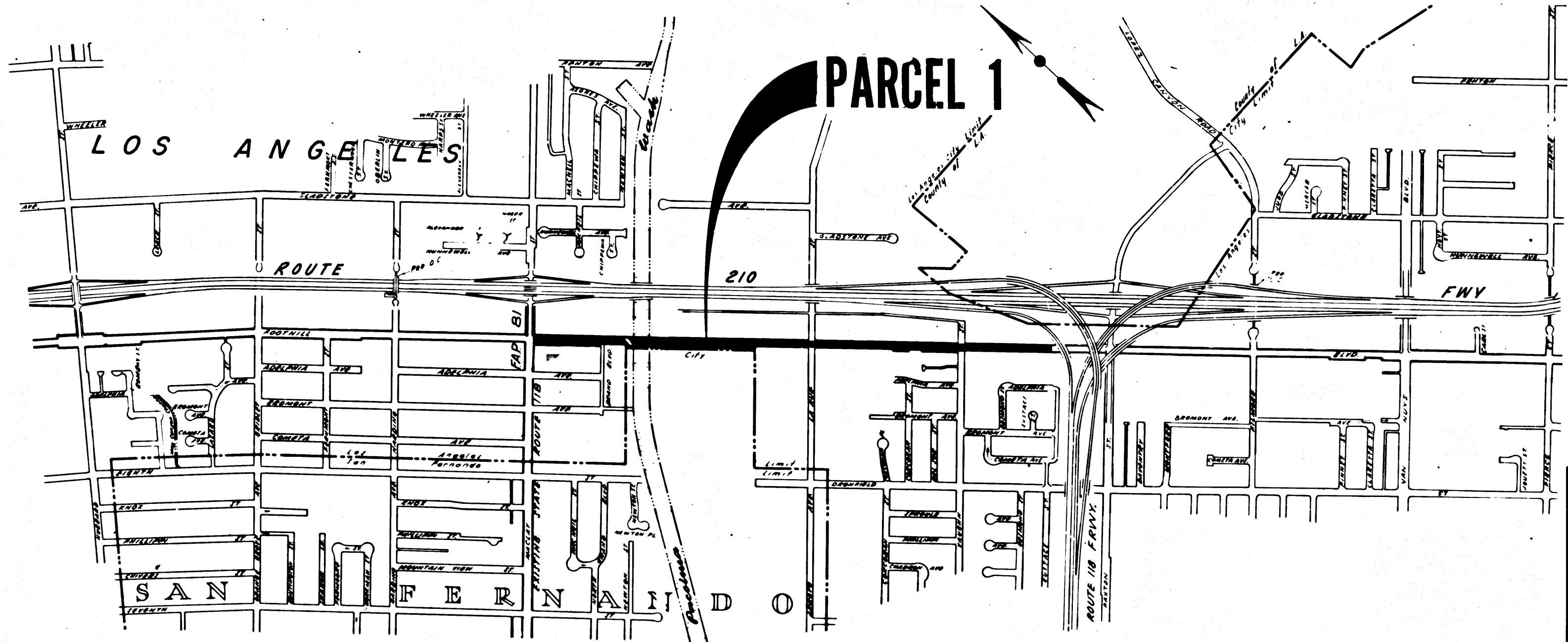
1- 344263

DIST	COUNTY	ROUTE	POST MILES	SHEET NO.	TOTAL SHEETS
07	LA	210	4.9/6.0	1	2

FILED
AT REQUEST OF
DEPT. OF PUBLIC WORKS
APRIL 8, 1977
MIN. PAST 3 PM
BOOK 15
PAGE 57
OF STATE HIGHWAY MAPS
LOS ANGELES COUNTY, CALIF.
COUNTY RECORDER
John K...
Duplicating *File*

R.W. Folkins
RIGHT OF WAY ENGINEERING
REGISTERED CIVIL ENGINEER NO. 6079
DATE 1-28-77

Recorded in the Office
of the County Recorder
LOS ANGELES COUNTY
S.H.M.B. No. Pg.



INTERSTATE

STATE OF CALIFORNIA
BUSINESS AND TRANSPORTATION AGENCY
DEPARTMENT OF TRANSPORTATION

PROPOSED RELINQUISHMENT

0 600 1200 1800 2400

AREA TO BE RELINQUISHED

DR'N BY <i>DF</i>	R/W MAP NO <i>F-1188 & F-1189</i>
CLC BY <i>JC</i>	CONTRACT NO <i>07-045234</i>
CK'D BY <i>AM</i>	REVISED

REL- 933

29

COUNTY ENGINEER'S COPY

DIST	COUNTY	ROUTE	POST MILES	SHEET NO	TOTAL SHEETS
07	LA	210	4.9-6.0	2	2

FILED WITH LOS ANGELES
COUNTY RECORDER
APR 5 1977

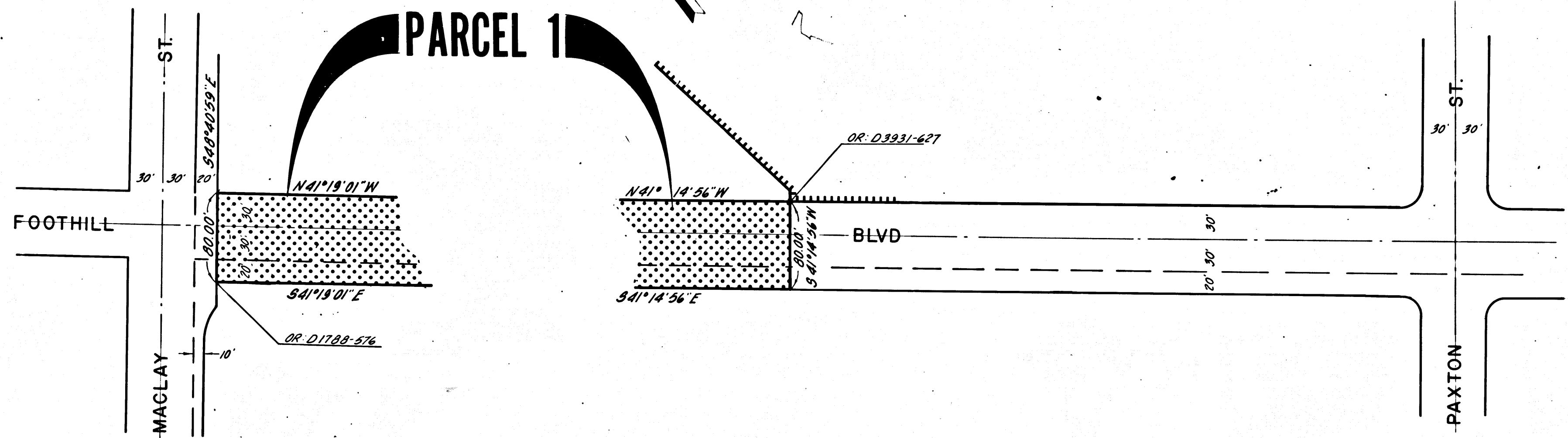
R.W. F. Hines
SENIOR ENGINEER,
RIGHT OF WAY ENGINEERING
REGISTERED CIVIL ENGINEER NO. 60729

1-28-77
DATE

Recorded in the Office
of the County Recorder
LOS ANGELES COUNTY

S.H.M.B. No. Pg.

CITY OF LOS ANGELES



INTERSTATE

STATE OF CALIFORNIA
BUSINESS AND TRANSPORTATION AGENCY
DEPARTMENT OF TRANSPORTATION

PROPOSED RELINQUISHMENT

0 50 100 150 200

AREA TO BE RELINQUISHED

ACCESS PROHIBITED

DR'N BY <i>DF</i>	R/W MAP NO. <i>F-1138</i>
C'LC BY <i>JC</i>	CONTRACT NO. <i>07-045234</i>
C'K'D BY <i>AM</i>	REL- 933
REVISED	

COUNTY ENGINEER'S COPY