

STATE OF CALIFORNIA  
 BUSINESS AND TRANSPORTATION AGENCY  
 DEPARTMENT OF TRANSPORTATION

77 767408

BOOK 15 PAGE 65

DIST	COUNTY	ROUTE	POST MILES	SHEET NO.	TOTAL SHEETS
07	LA	27	16.87	1	2

FILED  
 AT REQUEST OF  
 DEPT. OF PUBLIC WORKS  
 July 13, 1977  
 1 PAST 2 PM  
 IN BOOK 15  
 OF PAGE 65  
 OF STATE HIGHWAY MAPS  
 LOS ANGELES COUNTY, CALIF.  
 Registrar-Recorder  
 John R. Garcia  
 Deputy  
 FREE

*C.B. Arilla*  
 RIGHT OF WAY ENGINEERING  
 REGISTERED CIVIL ENGINEER NO. 14117  
 DATE 7-5-77

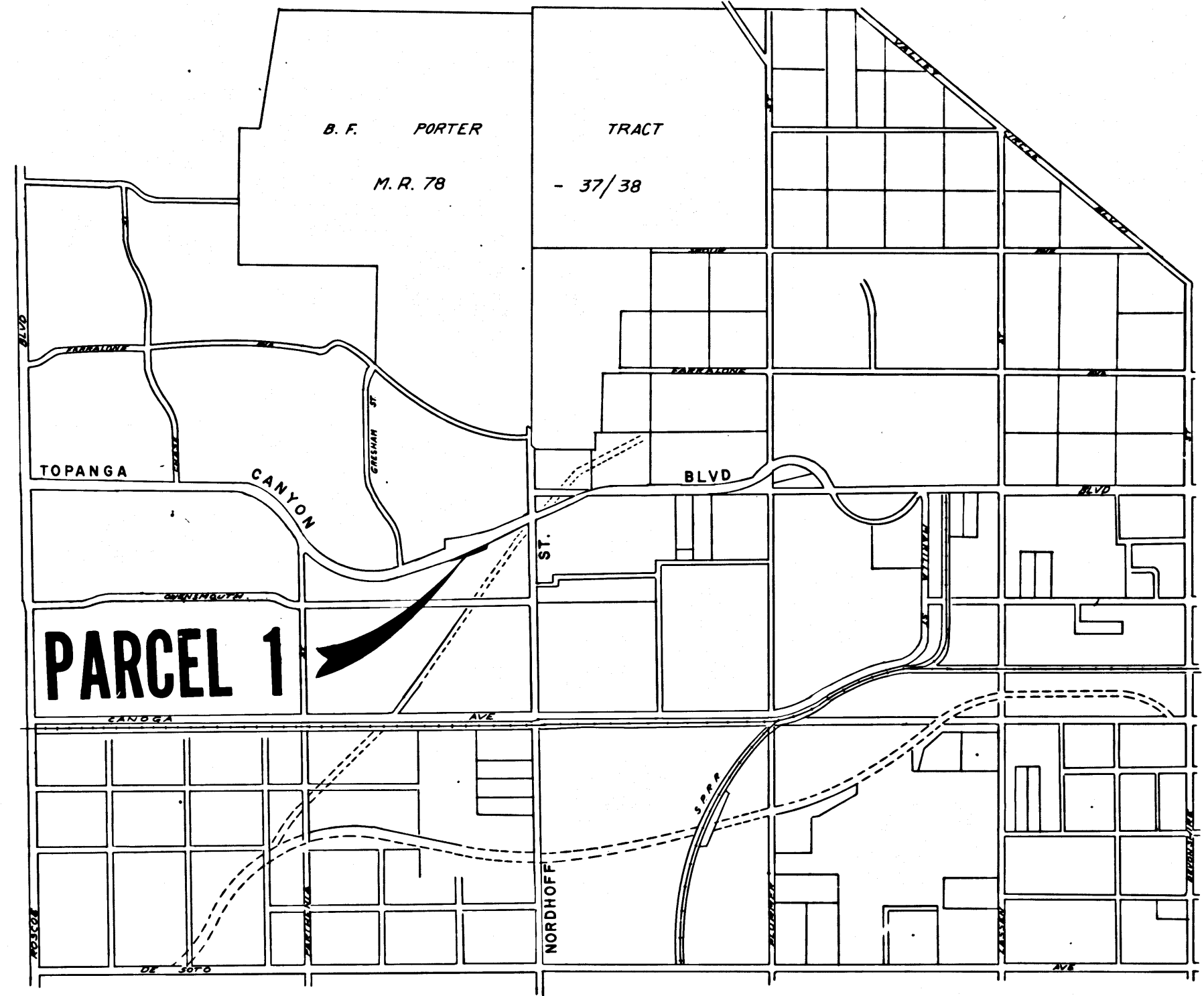
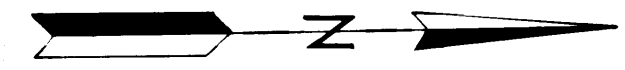
RIGHT OF WAY MAPS OF  
 STATE HIGHWAY

In Los Angeles County in the City of Los Angeles  
 on Topanga Canyon Boulevard 0.1mi. South of Nordhoff St.

Recorded in the Office  
 of the County Recorder  
 LOS ANGELES COUNTY  
 S.H.M.B. No. Pg.

CITY OF

LOS ANGELES



STATE OF CALIFORNIA  
 BUSINESS AND TRANSPORTATION AGENCY  
 DEPARTMENT OF TRANSPORTATION

**PROPOSED ABANDONMENT**

0 600 1200 1800 2400  
 AREA TO BE ABANDONED

DR'N BY	B.J.K.	R/W MAP NO.	6764
C'LC BY	J.C.	CONTRACT NO.	64-7V13C58
C'K'D BY	H.V.		
REVISED			ABD-114

DIST	COUNTY	ROUTE	POST MILES	SHEET NO.	TOTAL SHEETS
07	LA	27	16.87	2	2

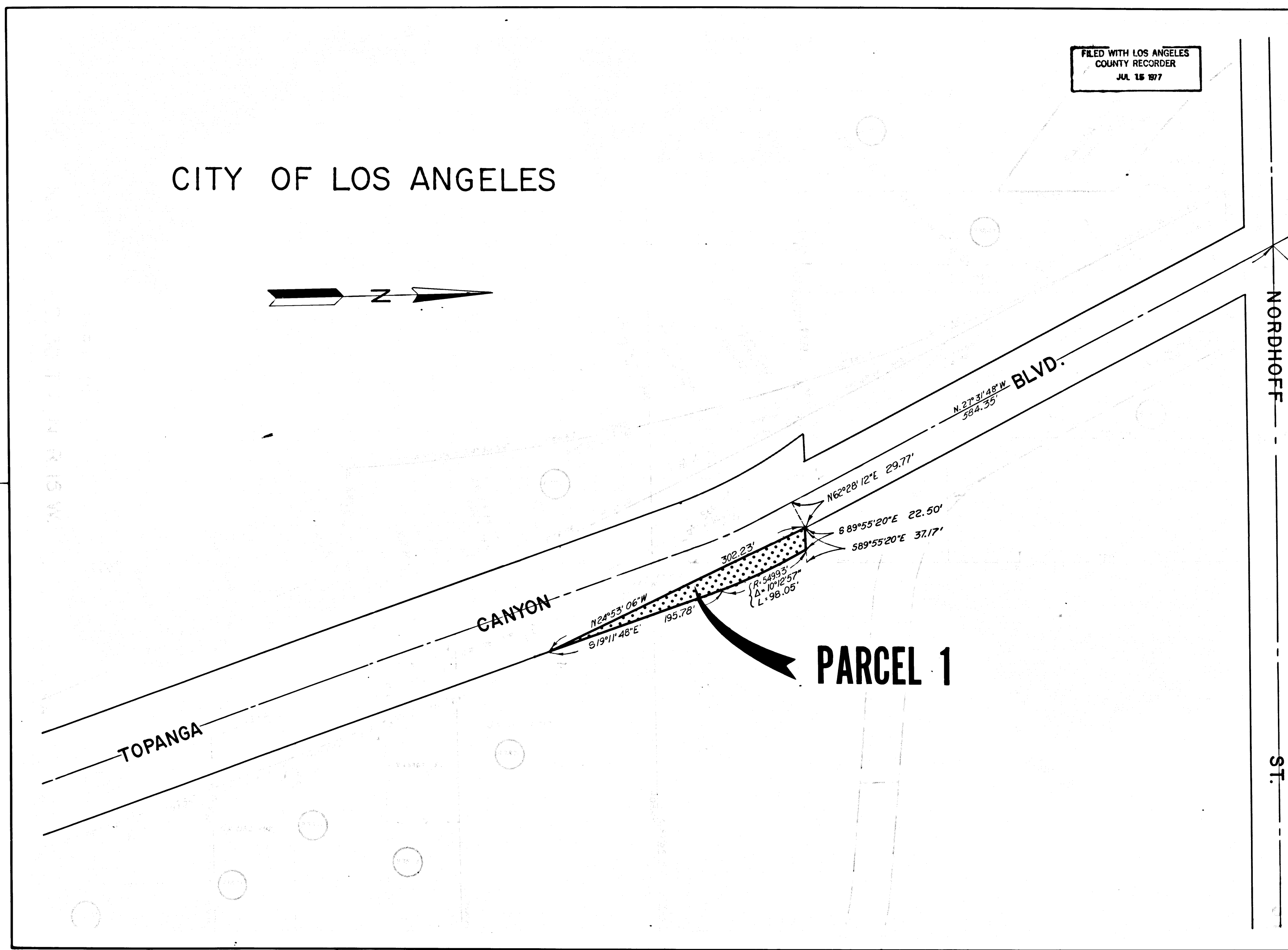
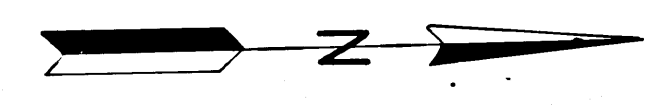
FILED WITH LOS ANGELES COUNTY RECORDER  
JUL 15 1977

*C.B. Appellera*  
SENIOR ENGINEER,  
RIGHT OF WAY ENGINEERING  
REGISTERED CIVIL ENGINEER NO. 14117  
DATE 7-5-77

Recorded in the Office  
of the County Recorder  
LOS ANGELES COUNTY  
S.H.M.B. No. Pg.

O.R. & Inters.

CITY OF LOS ANGELES



NORDHOFF ST.

STATE OF CALIFORNIA  
BUSINESS AND TRANSPORTATION AGENCY  
DEPARTMENT OF TRANSPORTATION

**PROPOSED ABANDONMENT**

0 50 100 150 200

AREA TO BE ABANDONED

ACCESS PROHIBITED

DR'N BY	B. J. K.	R/W MAP NO.	6764
C'LC BY	J. C.	CONTRACT NO.	64-7VI3C58
C'K'D BY	H.V.		ABD-114
REVISED			