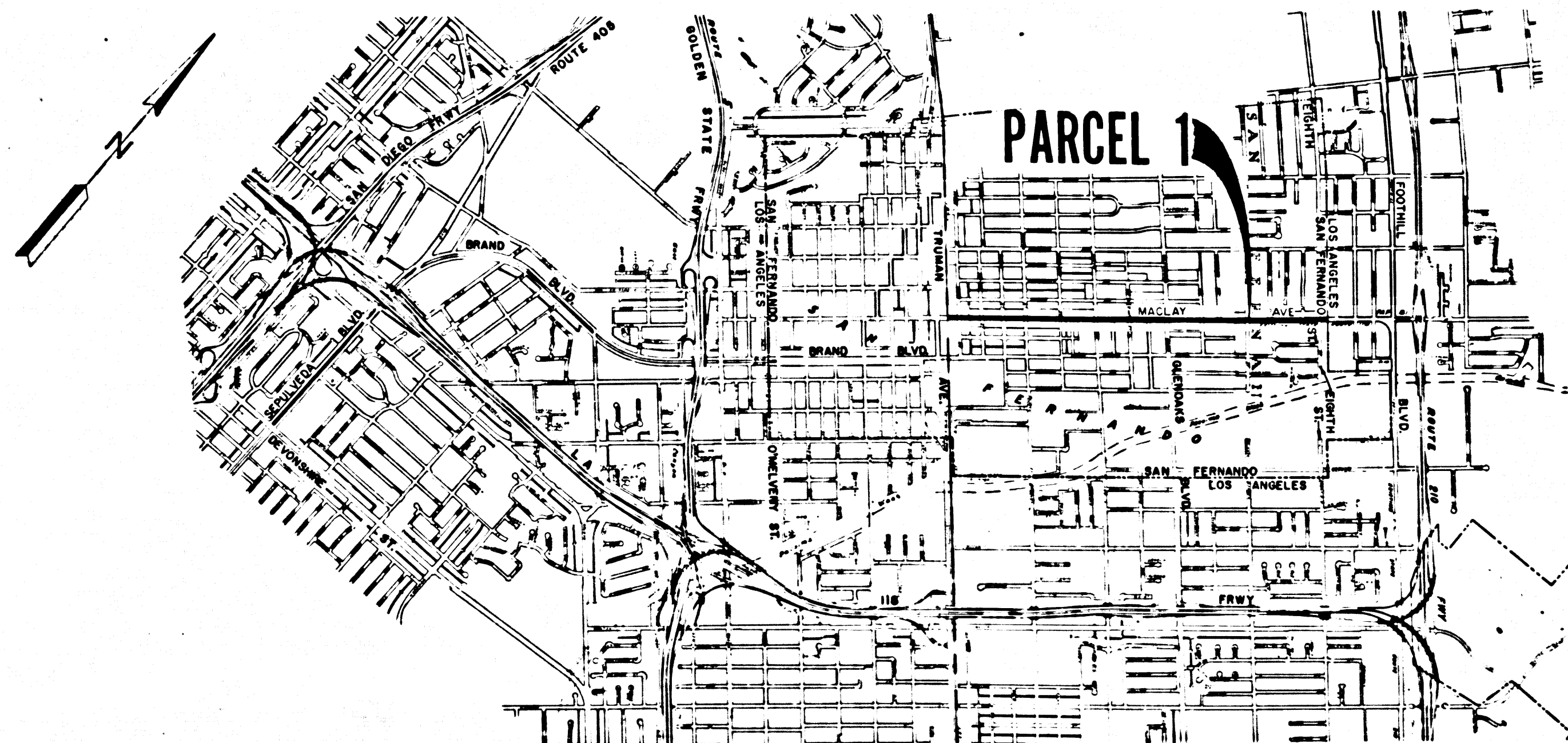


STATE OF CALIFORNIA  
 BUSINESS AND TRANSPORTATION AGENCY  
 DEPARTMENT OF TRANSPORTATION

RIGHT OF WAY MAPS OF  
 STATE HIGHWAY

In The City of San Fernando on Rte 118 from S.P.R.R. near  
 Truman Ave to L.A. City Limit Line near 8th St.



BOOK 15 PAGE 76

DIST	COUNTY	ROUTE	POST MILES	SHEET NO.	TOTAL SHEETS
07	L.A.	118	13.9/15.3	1	2

78-118437

FILED  
 AT REQUEST OF  
 DEPT. OF PUBLIC WORKS  
 JAN 31 1978  
 4:17 PM

REGISTERED  
 CIVIL ENGINEER  
 LOS ANGELES COUNTY, CALIF.  
 FREE

*CBP*  
 RIGHT OF WAY/ENGINEERING  
 REGISTERED CIVIL ENGINEER NO. 14117  
 DATE 12-16-77

Recorded in the Office  
 of the County Recorder  
 LOS ANGELES COUNTY  
 S.H.M.B. No. Pg.

STATE OF CALIFORNIA  
 BUSINESS AND TRANSPORTATION AGENCY  
 DEPARTMENT OF TRANSPORTATION

PROPOSED RELINQUISHMENT



AREA TO BE RELINQUISHED

DR'N BY K. PROTASOV	R/W MAP NO 0143
C/LC BY J.C.	CONTRACT NO.
CK'D BY	REL-930
REVISED	

FILED WITH LOS ANGELES COUNTY RECORDER  
JAN 21 1978

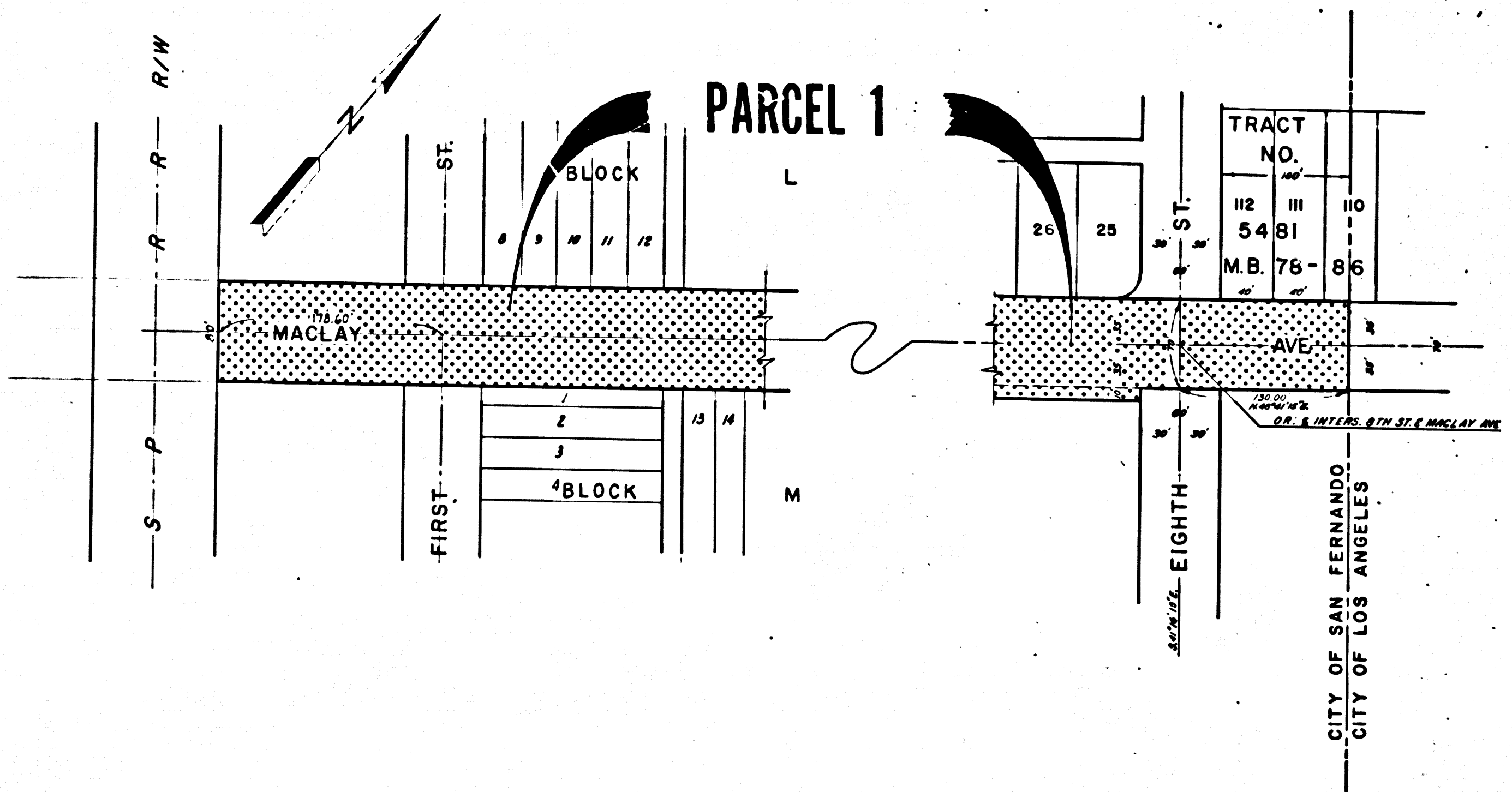
DIST	COUNTY	ROUTE	POST MILES	SHEET NO.	TOTAL SHEETS
07	LA	110	15.9 / 15.3	2	2

*C. B. Sullivan*  
SENIOR ENGINEER  
RIGHT OF WAY ENGINEERING  
REGISTERED CIVIL ENGINEER NO. 14117

DATE  
12-16-77

Recorded in the Office  
of the County Recorder  
LOS ANGELES COUNTY  
S.H.M.B. No. Pg. •



CITY OF SAN FERNANDO



STATE OF CALIFORNIA  
BUSINESS AND TRANSPORTATION AGENCY  
DEPARTMENT OF TRANSPORTATION

**PROPOSED RELINQUISHMENT**

0 50 100 150 200

AREA TO BE RELINQUISHED   
ACCESS PROHIBITED 

DR'N BY <i>DS</i>	R/W MAP NO. <i>0143</i>
C'LC BY <i>JL</i>	CONTRACT NO.
C'K'D BY <i>AM</i>	REL- 930
REVISED	