

216 16 05114

BOOK 16 PAGE 14

STATE OF CALIFORNIA
BUSINESS AND TRANSPORTATION AGENCY
DEPARTMENT OF TRANSPORTATION

DIST	COUNTY	ROUTE	POST MILES	SHEET NO	TOTAL SHEETS
07	C.A.	14	60.7-61.4	1	1

C.B. Apollonia
RIGHT OF WAY ENGINEER
REGISTERED CIVIL ENGINEER NO. 14117
DATE 4-18-78

RIGHT OF WAY MAPS OF
STATE HIGHWAY

In the County of Los Angeles on Ave. P-8 between
Sierra Highway (Route 14) and Division St.

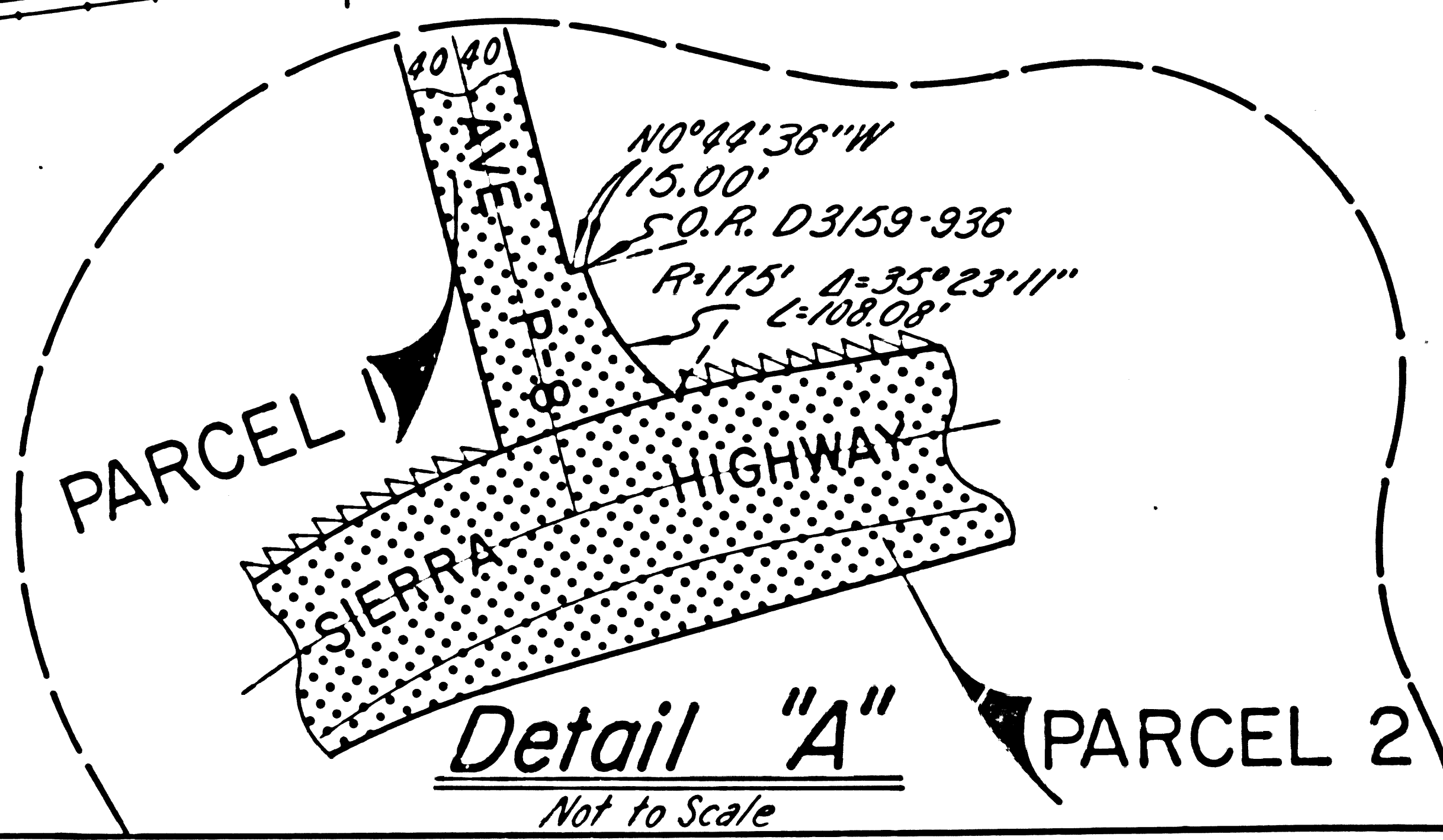
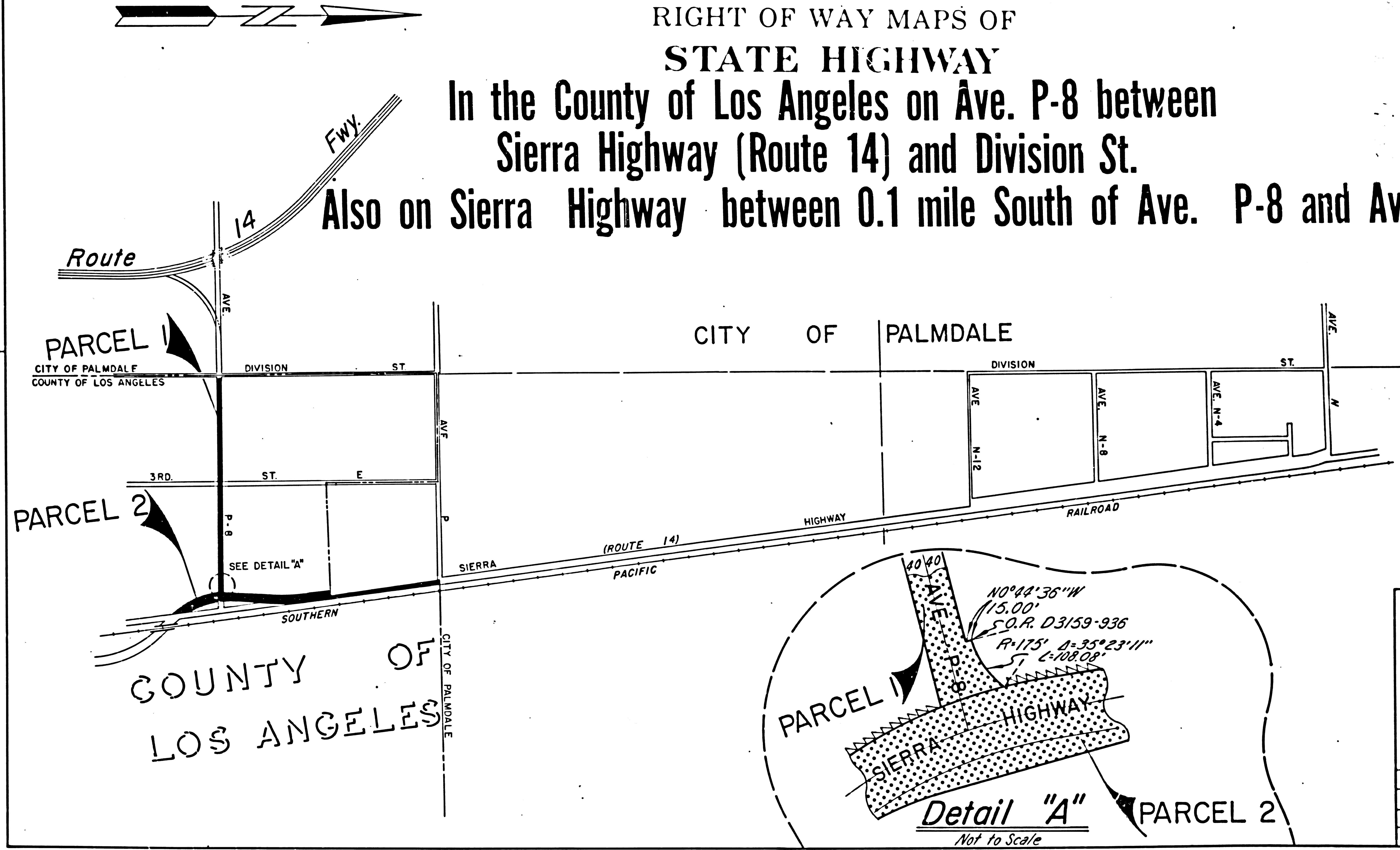
Also on Sierra Highway between 0.1 mile South of Ave. P-8 and Ave P.

78-983908

78-983908

FILED
AT REQUEST OF
DEPT. OF PUBLIC WORKS
SEP 5 1978
27 2 PM

78-983908
#FREE



STATE OF CALIFORNIA BUSINESS AND TRANSPORTATION AGENCY DEPARTMENT OF TRANSPORTATION	
PROPOSED RELINQUISHMENT SCALE	
0 600 1200 1800 2400	
AREA TO BE RELINQUISHED SHOWN THUS	
ACCESS RIGHTS TO BE RELINQUISHED	
DR'N BY <i>U. Kuehn</i>	R/W MAP NO. <i>P23011</i>
C'LC BY <i>M. Riley</i>	CONTRACT NO. 035704
C'KD BY <i>H. Lee</i>	REL-852
REVISED J. COTTON	