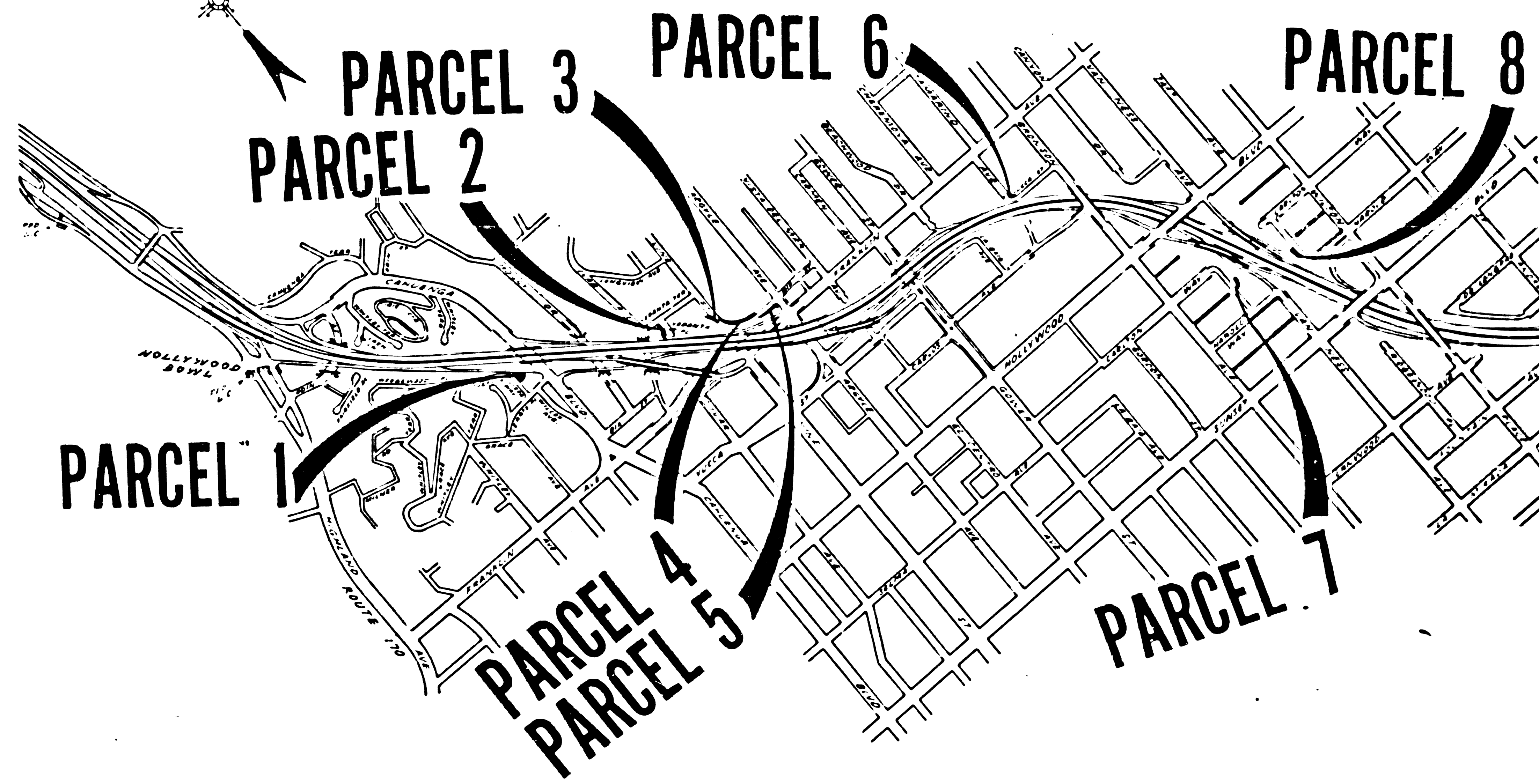


BOOK 16 PAGE 16

STATE OF CALIFORNIA
BUSINESS AND TRANSPORTATION AGENCY
DEPARTMENT OF TRANSPORTATION

RIGHT OF WAY MAPS OF
STATE HIGHWAY

IN THE CITY OF LOS ANGELES ALONG THE ROUTE 101 FREEWAY
BETWEEN HIGHLAND AVE. AND SUNSET BLVD.



78-1164455

FILED
AT REQUEST OF
DEPT. OF PUBLIC WORKS
10-19-78
BY
41 PAST 11 AM.
IN BOOK 16
AT PAGE 16
OF STATE HIGHWAY MAPS
LOS ANGELES COUNTY, CALIF.
REGISTERED
BY S. S. S. S.
DATE

78-1164455

DIST	COUNTY	ROUTE	POST MILES	SHEET NO.	TOTAL SHEETS
07	LA	101	7.6 to 6.4	1	5

C. J. ...
RIGHT OF WAY ENGINEERING
REGISTERED CIVIL ENGINEER NO. 14117
DATE 5-18-78

Recorded in the Office
of the County Recorder
LOS ANGELES COUNTY
S.H.M.B. No. Pg.

STATE OF CALIFORNIA
BUSINESS AND TRANSPORTATION AGENCY
DEPARTMENT OF TRANSPORTATION

PROPOSED RELINQUISHMENT

0 600 1200 1800 2400

AREA TO BE RELINQUISHED

DR'N BY P.S.	R. W. MAP NO. F1379, F1379
C'LC BY R.A.	CONTRACT NO. 07-01534
C'KD BY D.B.	REL-913
REVISED	

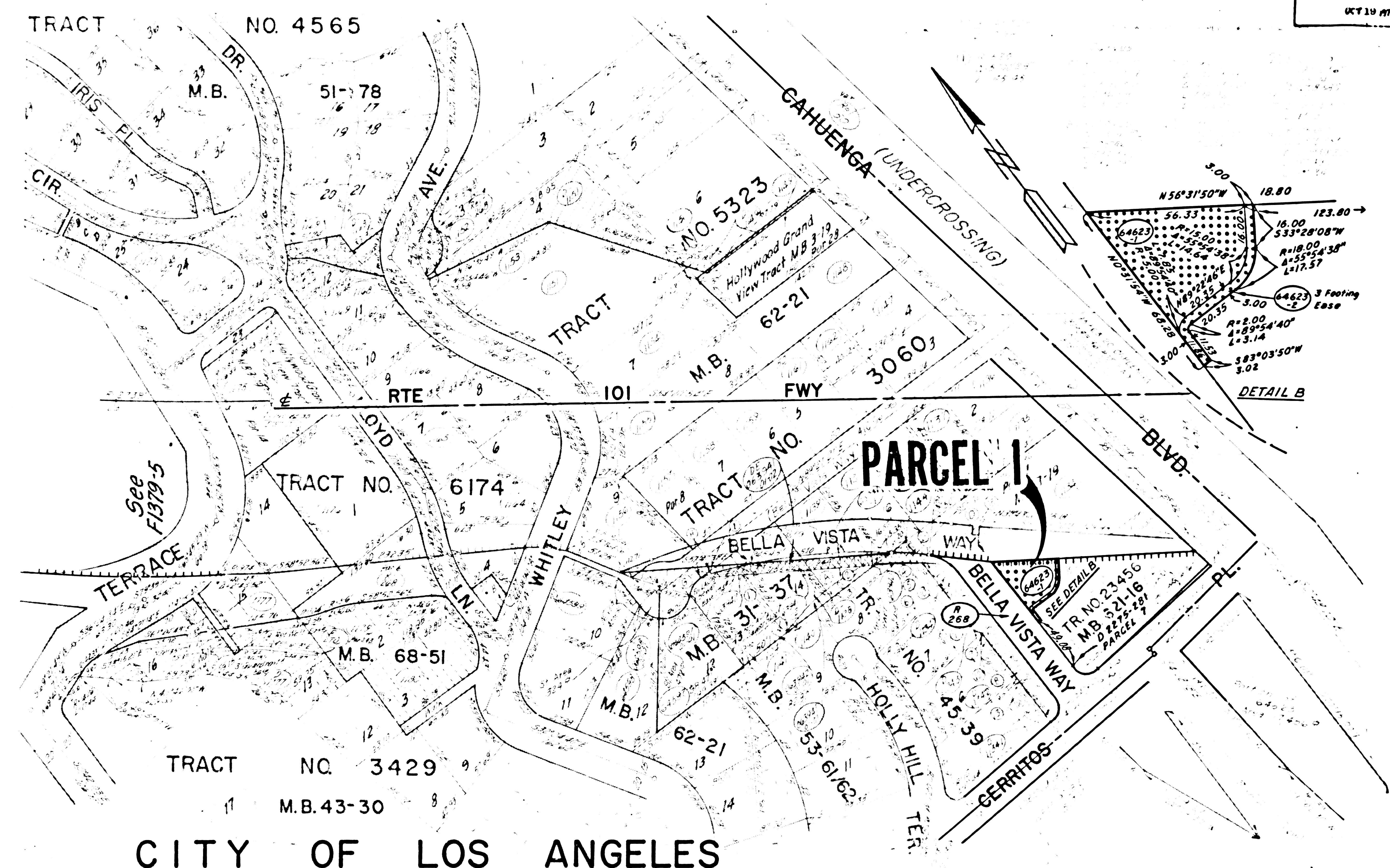
DIST.	COUNTY	ROUTE	POST MILES	SHEET NO.	TOTAL SHEETS
07	LA	101	7.6	2	5

FILED WITH LOS ANGELES COUNTY RECORDER
OCT 19 1978

CB [Signature]
SENIOR TRANSPORTATION ENGINEER
RIGHT OF WAY ENGINEERING
REGISTERED CIVIL ENGINEER NO. 14117

DATE 5-18-78

Recorded in the Office
of the County Recorder
LOS ANGELES COUNTY
S.H.M.B. No. Pg.



CITY OF LOS ANGELES

STATE OF CALIFORNIA
BUSINESS AND TRANSPORTATION AGENCY
DEPARTMENT OF TRANSPORTATION

PROPOSED RELINQUISHMENT

0 50 100 150 200

AREA TO BE RELINQUISHED ACCESS PROHIBITED

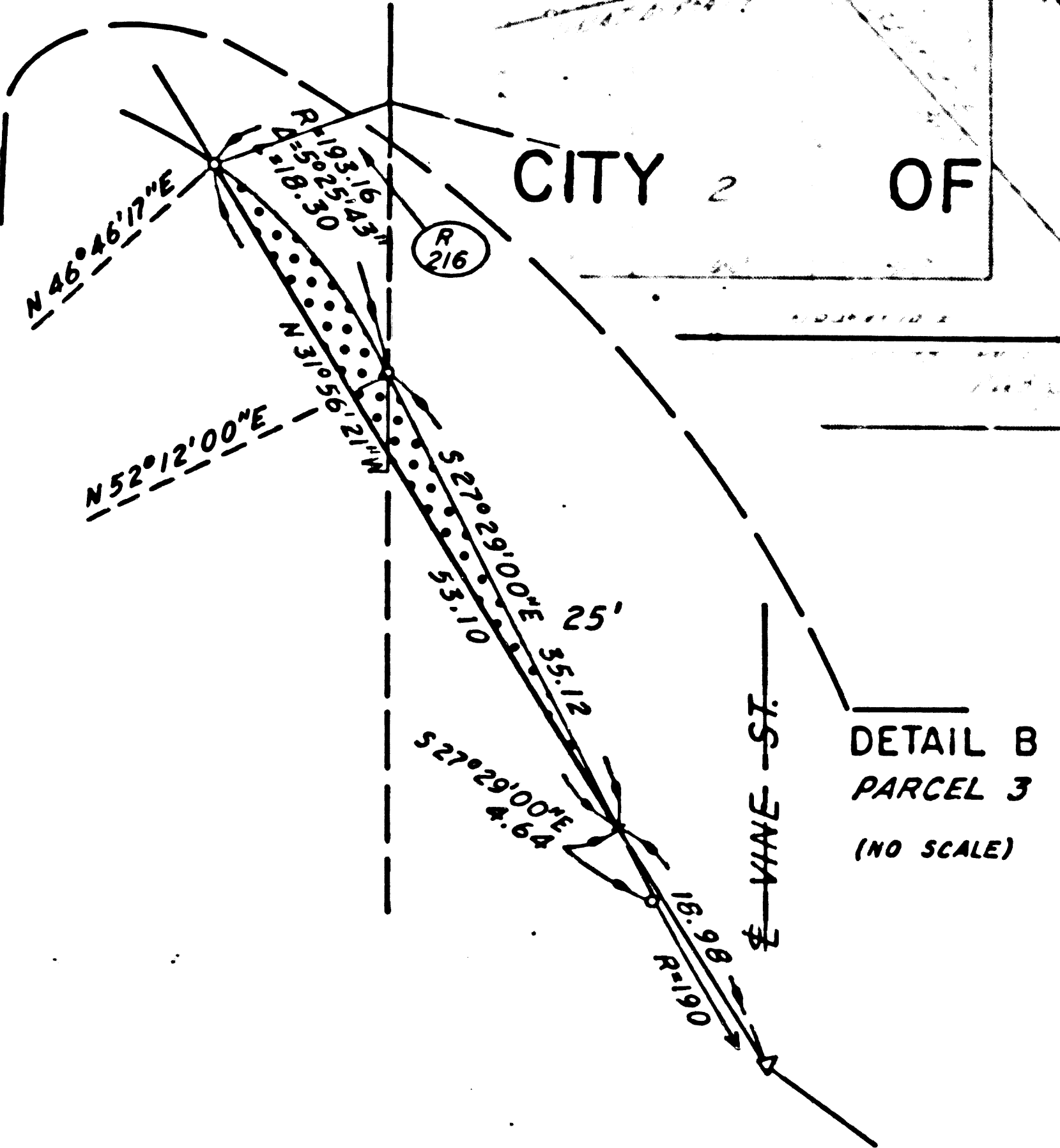
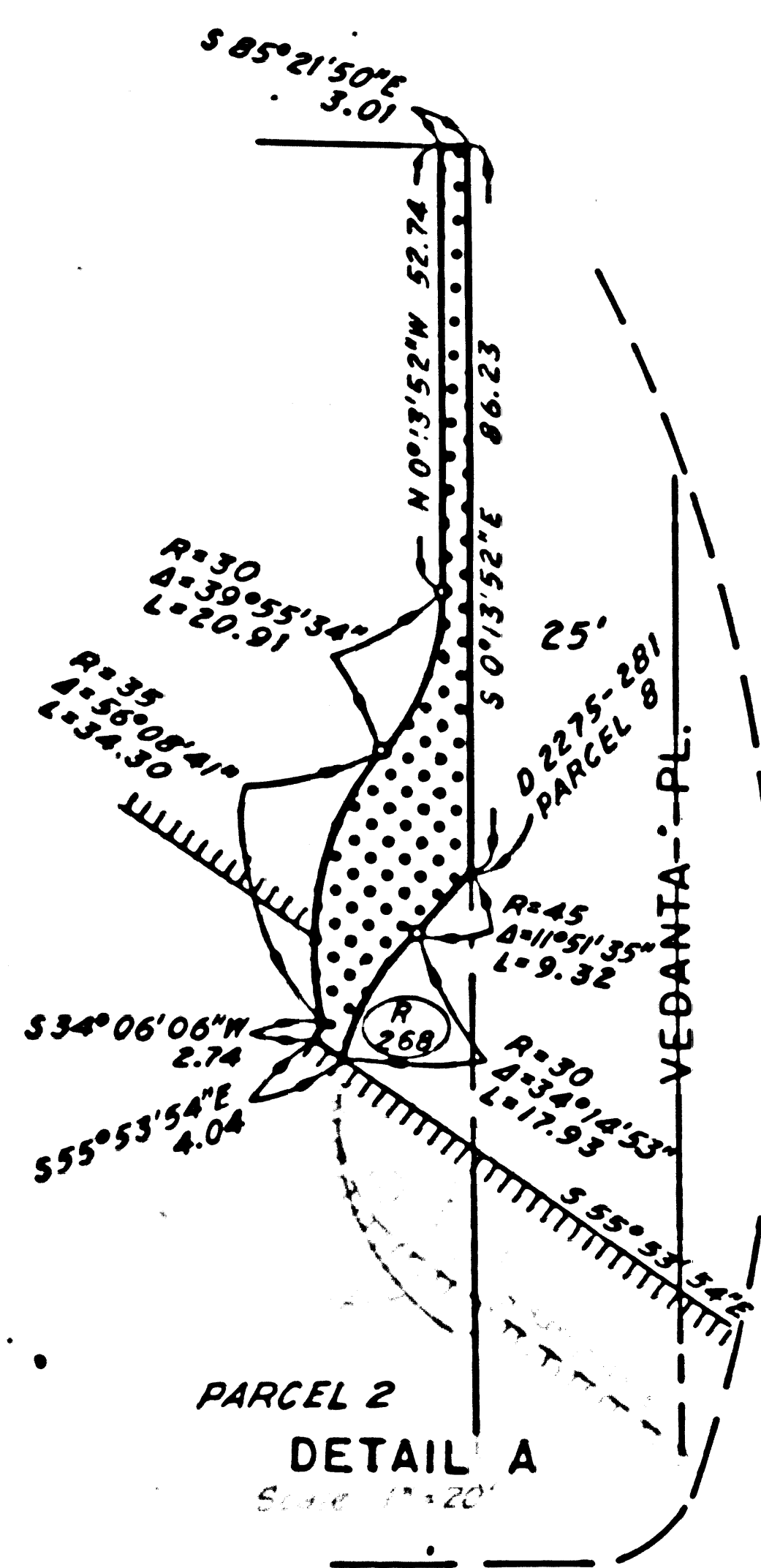
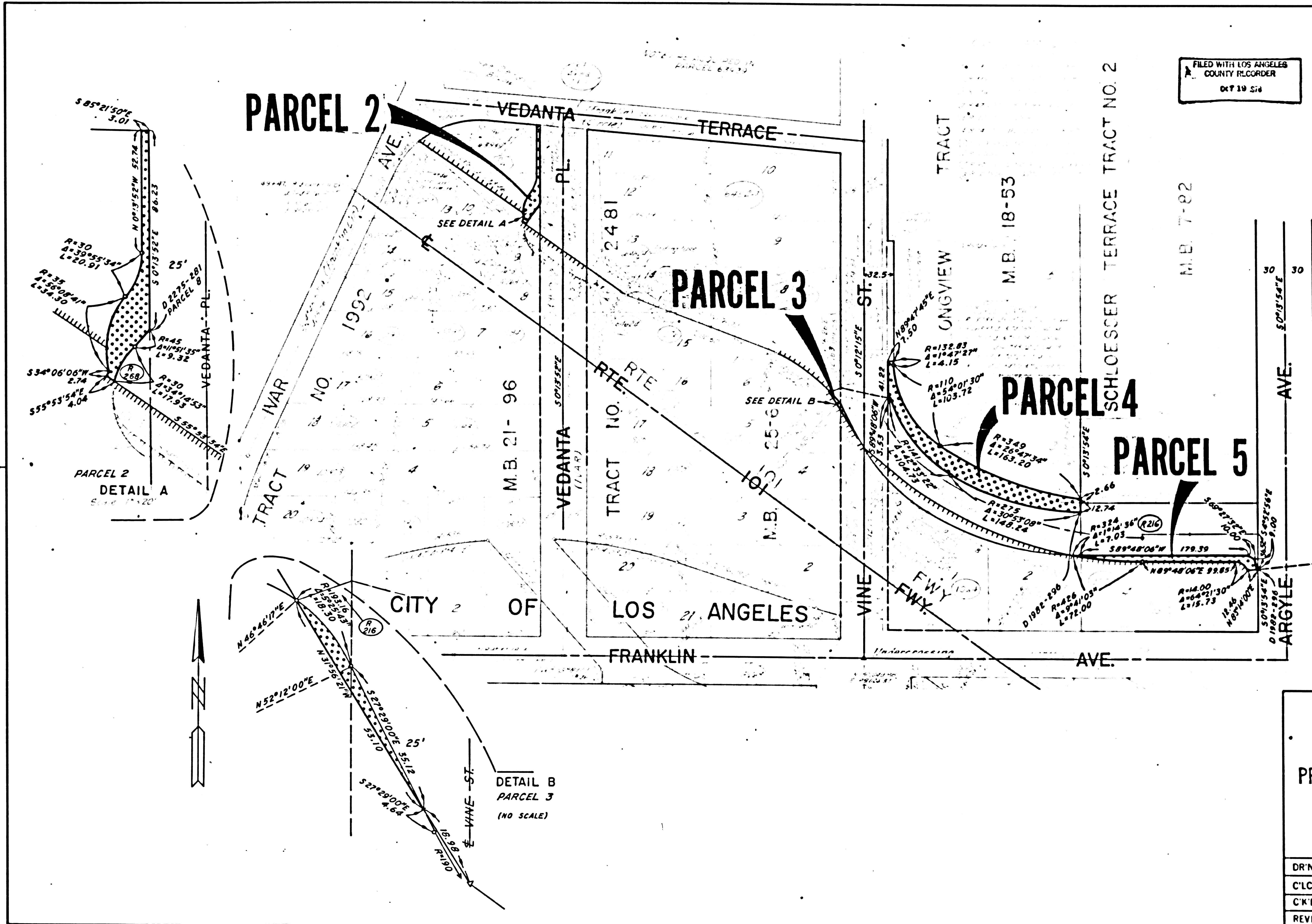
DR'N BY P.S.	R/W MAP NO. F 1379-4
C'LC BY R.A.	CONTRACT NO.
C'K'D BY D.B.	REL-913
REVISED	

DIST	COUNTY	ROUTE	POST MILES	SHEET NO.	TOTAL SHEETS
07	LA	101	7.2	3	5

FILED WITH LOS ANGELES COUNTY RECORDER
OCT 19 574

C.B. Miller
SENIOR TRANSPORTATION ENGINEER
RIGHT OF WAY ENGINEERING
REGISTERED CIVIL ENGINEER NO. 14117
DATE 5-18-78

Recorded in the Office of the County Recorder
LOS ANGELES COUNTY
S.H.M.B. No. Pg.



STATE OF CALIFORNIA
BUSINESS AND TRANSPORTATION AGENCY
DEPARTMENT OF TRANSPORTATION

PROPOSED RELINQUISHMENT

0 50 100 150 200

AREA TO BE RELINQUISHED ACCESS PROHIBITED

DR'N BY P.S.	R/W MAP NO. F 1379-2
C'LC BY R.A.	CONTRACT NO.
C'D BY D.B.	REL-913
REVISED	

DIST	COUNTY	ROUTE	POST MILES	SHEET NO.	TOTAL SHEETS
07	LA	101	6.6	4	5

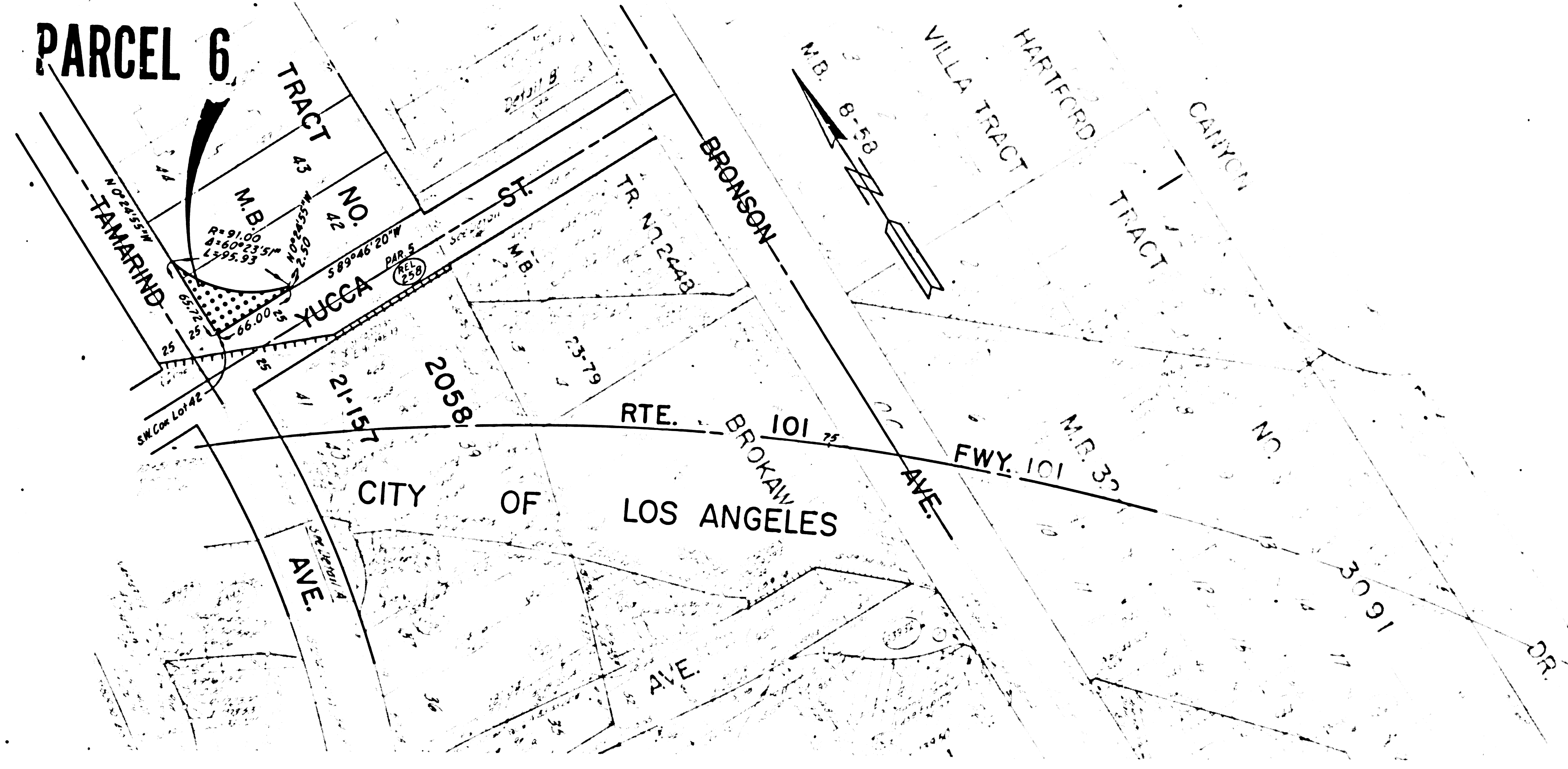
FILED WITH LOS ANGELES COUNTY RECORDER
04 19 78

C. B. ...
SENIOR TRANSPORTATION ENGINEER
RIGHT OF WAY ENGINEERING
REGISTERED CIVIL ENGINEER NO. 14117
5-18-78

DATE

Recorded in the Office
of the County Recorder
LOS ANGELES COUNTY



S.H.M.B. No. Pg.



STATE OF CALIFORNIA
BUSINESS AND TRANSPORTATION AGENCY
DEPARTMENT OF TRANSPORTATION

PROPOSED RELINQUISHMENT

0 50 100 150 200

AREA TO BE RELINQUISHED 
ACCESS PROHIBITED 

DR'N BY P.S.	R/W MAP NO. F 1378-5
C'LC BY R.A.	CONTRACT NO.
C'K'D BY D.B.	REL-913
REVISED	

DIST	COUNTY	ROUTE	POST MILES	SHEET NO.	TOTAL SHEETS
07	LA	101	6.4	5	5

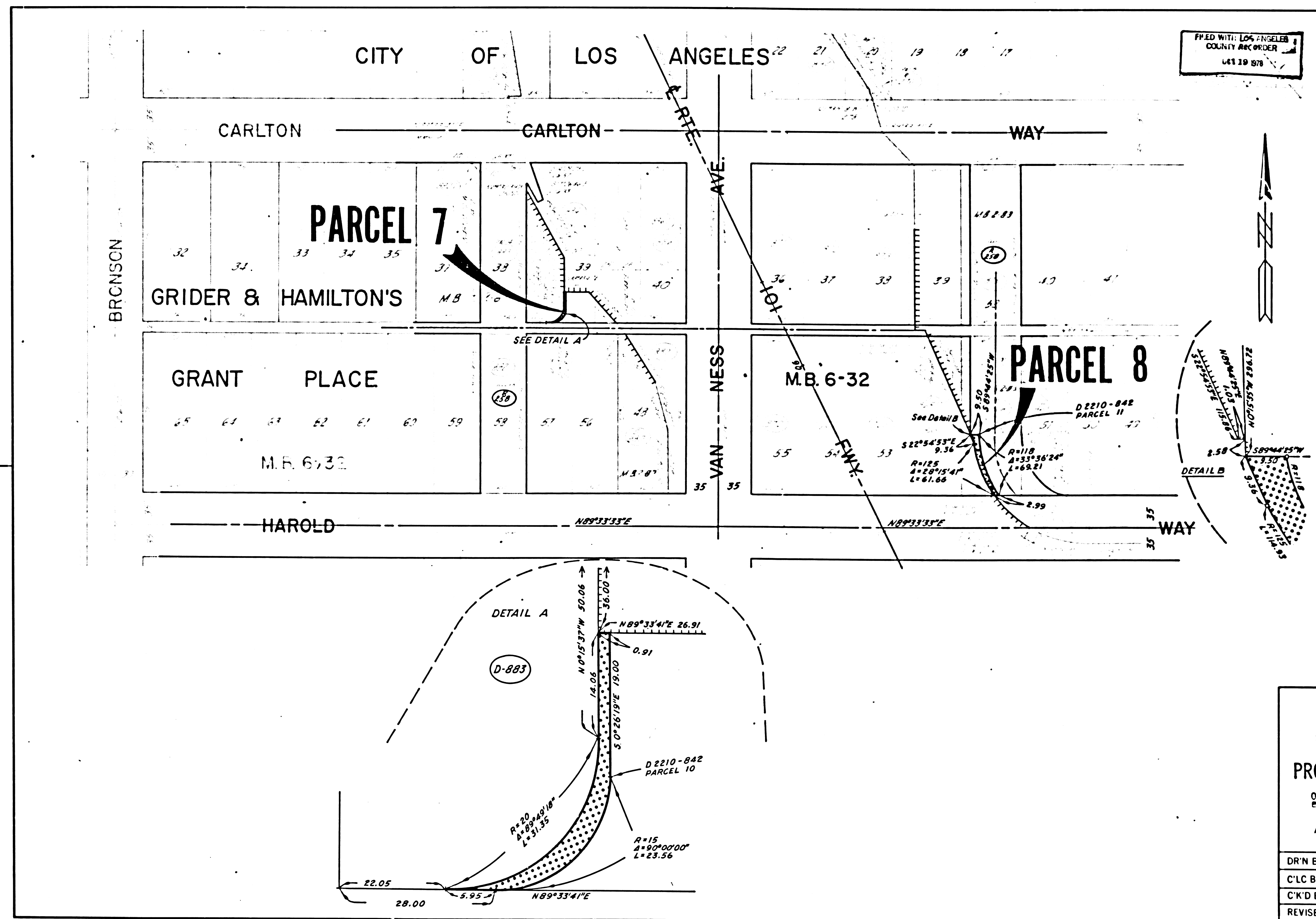
FILED WITH LOS ANGELES COUNTY RECORDER
441 19 878

C.B. Phillips
SENIOR TRANSPORTATION ENGINEER
RIGHT OF WAY ENGINEERING
REGISTERED CIVIL ENGINEER NO. 14117

DATE 5-18-78

Recorded in the Office of the County Recorder
LOS ANGELES COUNTY

S.H.M.B. No. Pg.



STATE OF CALIFORNIA
BUSINESS AND TRANSPORTATION AGENCY
DEPARTMENT OF TRANSPORTATION

PROPOSED RELINQUISHMENT

0 50 100 150 200

AREA TO BE RELINQUISHED

ACCESS PROHIBITED

DR'N BY P.S.	R/W MAP NO. F1378-4
C'LC BY R.A.	CONTRACT NO.
C'K'D BY D.B.	REL-913
REVISED.	