

STATE		FEDERAL PROJECT NO.			
CALIF		1-605-2(64)135			
DIST	COUNTY	ROUTE	POST MILES	SHEET NO.	TOTAL SHEETS
07	LA	10	31.3	1	2

STATE OF CALIFORNIA  
 BUSINESS AND TRANSPORTATION AGENCY  
 DEPARTMENT OF TRANSPORTATION

79-1069746

*C.B. Spallone*  
 RIGHT OF WAY ENGINEERING  
 REGISTERED CIVIL ENGINEER NO. 14117

FILED  
 AT REQUEST OF  
 DEPT. OF PUBLIC WORKS  
 SEPT 25 1979  
 27 PAST 1 PM  
 IN BOOK 16  
 ON PAGE 40  
 OF STATE HIGHWAY MAPS  
 LOS ANGELES COUNTY, CALIF.  
 Registrar-Recorder  
*D. B. ...*

DATE 5-4-79

Recorded in the Office of the County Recorder

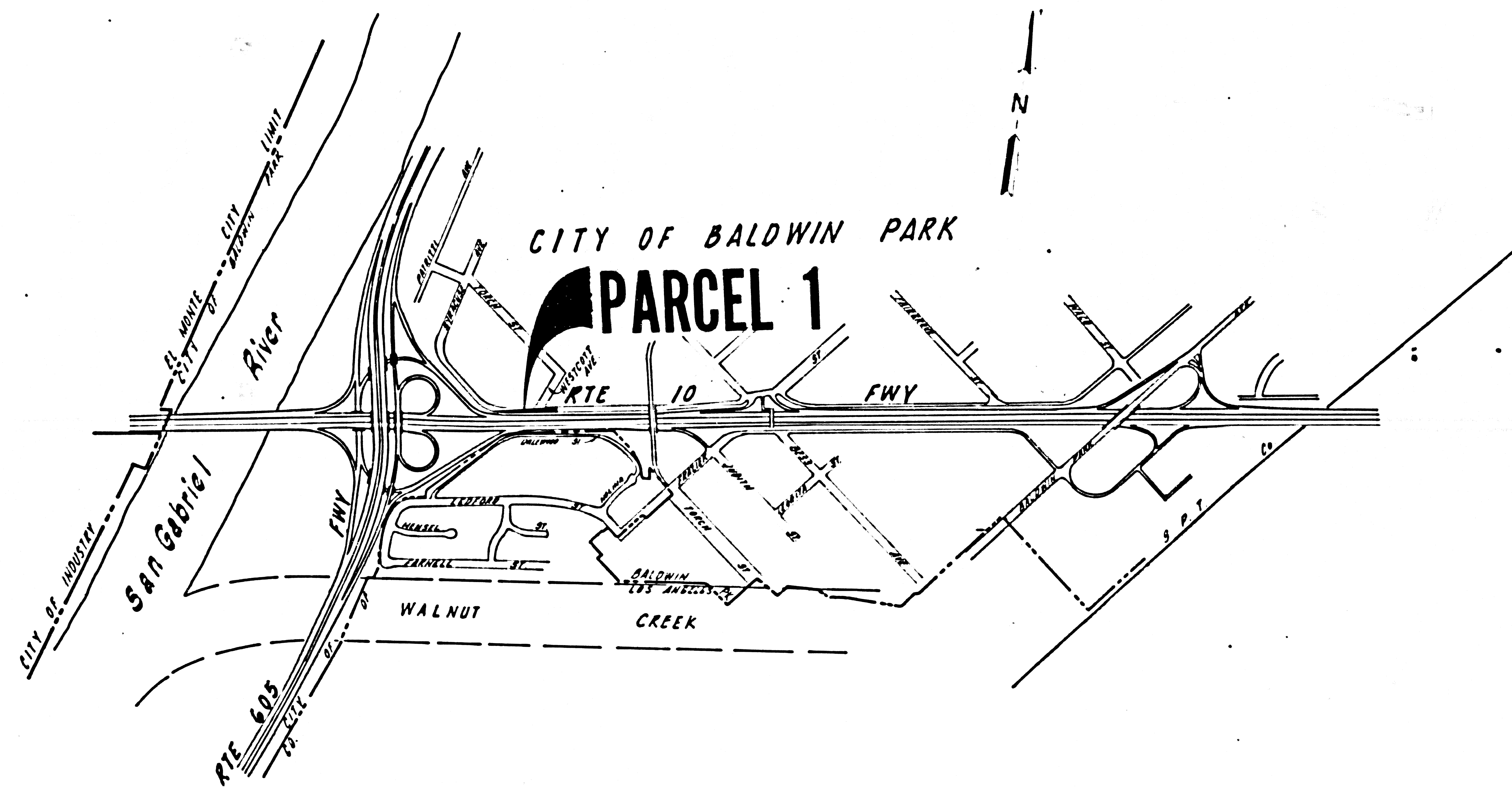
LOS ANGELES COUNTY

S.H.M.B. No. Pg.

RIGHT OF WAY MAPS OF  
 STATE HIGHWAY

In the City of Baldwin Park along Rte 10 Fwy at Westcott Ave

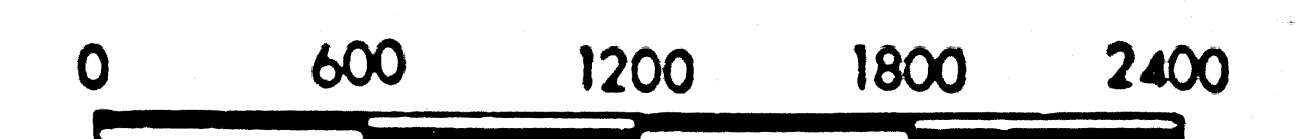
FREE



INTERSTATE

STATE OF CALIFORNIA  
 BUSINESS AND TRANSPORTATION AGENCY  
 DEPARTMENT OF TRANSPORTATION

PROPOSED RELINQUISHMENT



AREA TO BE RELINQUISHED

DR'N BY <i>DF</i>	R/W MAP NO. <i>F-1969</i>
C'LC BY <i>RB</i>	CONTRACT NO. <i>07-082224</i>
C'K'D BY <i>AM</i>	REL- 1042
REVISED	

DIST.	COUNTY	ROUTE	POST MILES	SHEET NO.	TOTAL SHEETS
07	CA	10	31.3	2	2

FILED WITH LOS ANGELES COUNTY RECORDER  
SEP 25 1979

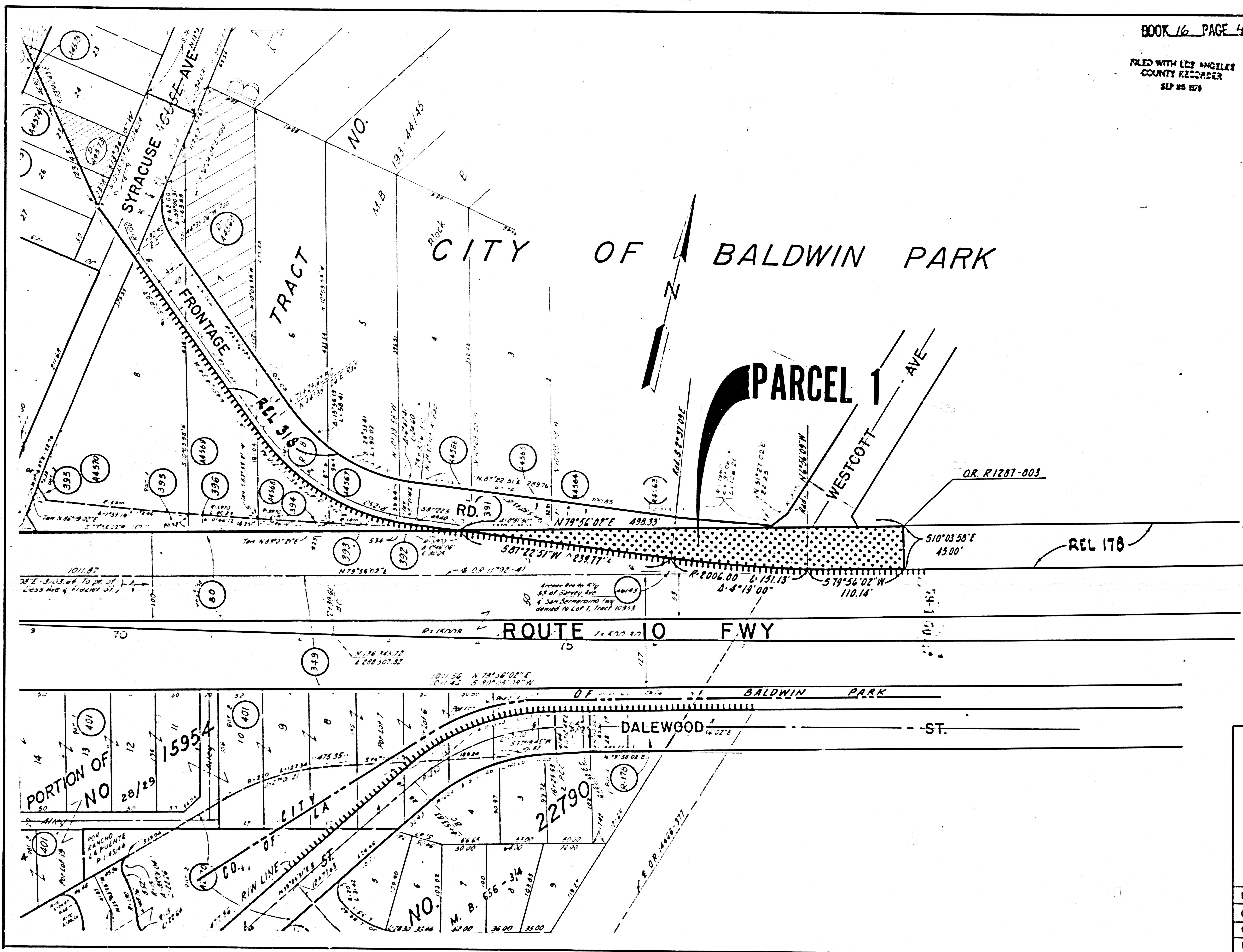
*C.B. [Signature]*  
SENIOR TRANSPORTATION ENGINEER  
RIGHT OF WAY ENGINEERING  
REGISTERED CIVIL ENGINEER NO. 14117

DATE 5-4-79

Recorded in the Office  
of the County Recorder  
LOS ANGELES COUNTY

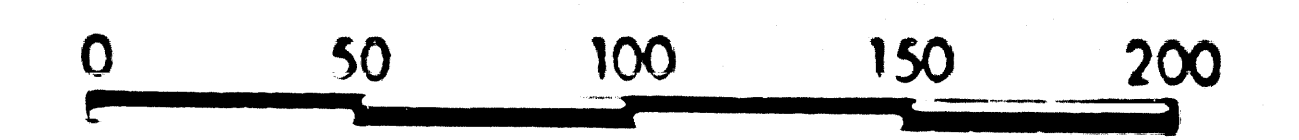
S.H.M.B. No. Pg.

DATE



INTERSTATE

STATE OF CALIFORNIA  
BUSINESS AND TRANSPORTATION AGENCY  
DEPARTMENT OF TRANSPORTATION  
**PROPOSED RELINQUISHMENT**



AREA TO BE RELINQUISHED ACCESS PROHIBITED

DRN BY <i>DF</i>	R/W MAP NO. <i>F-1969</i>
C/LC BY <i>RB</i>	CONTRACT NO. <i>07-082224</i>
C/K'D BY <i>AM</i>	<b>REL-1042</b>
REVISED	