

STATE OF CALIFORNIA  
 BUSINESS AND TRANSPORTATION AGENCY  
 DEPARTMENT OF TRANSPORTATION

STATE	FEDERAL PROJECT NO.				
CALIF.	I-105-3 (186) 12				
DIST	COUNTY	ROUTE	POST MILES	SHEET NO.	TOTAL SHEETS
07	LA	105	15.2	1	2

*Walter L. Kurbach*  
 RIGHT OF WAY ENGINEERING  
 REGISTERED CIVIL ENGINEER NO. 8944

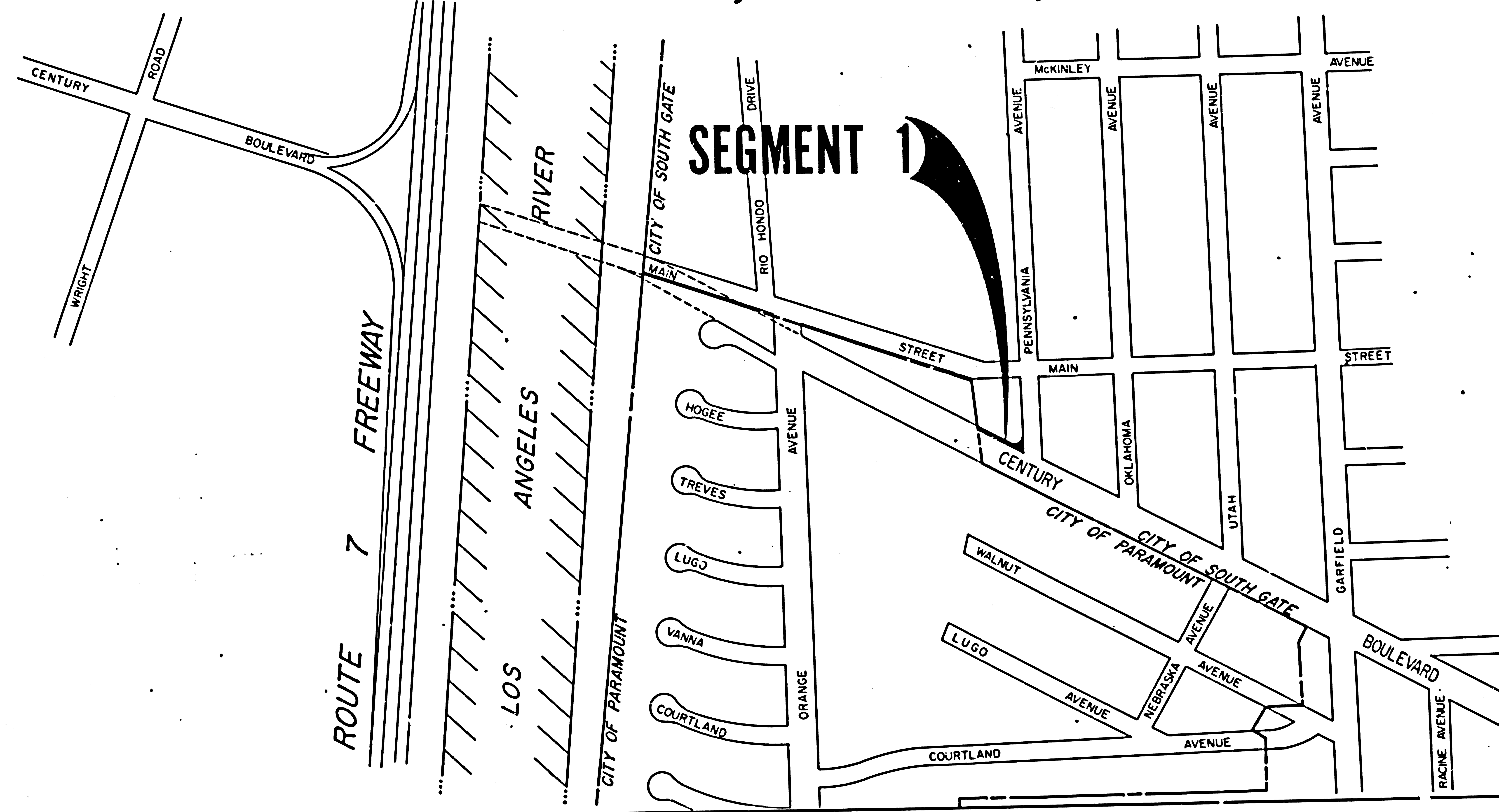
79-1228575  
 79-1228575

FILED  
 AT REQUEST OF  
 DEPT. OF PUBLIC WORKS  
 OCT 31 1979  
 1:15 P.M.  
 16  
 44  
 OF STATE HIGHWAY MAPS  
 LOS ANGELES COUNTY, CALIF.  
 Registrar-Recorder  
*Scott*

DATE 10-13-79  
 Recorded in the Office  
 of the County Recorder  
 LOS ANGELES COUNTY  
 S.H.M.B. No. Pg.  
 DATE

RIGHT OF WAY MAPS OF  
 STATE HIGHWAY

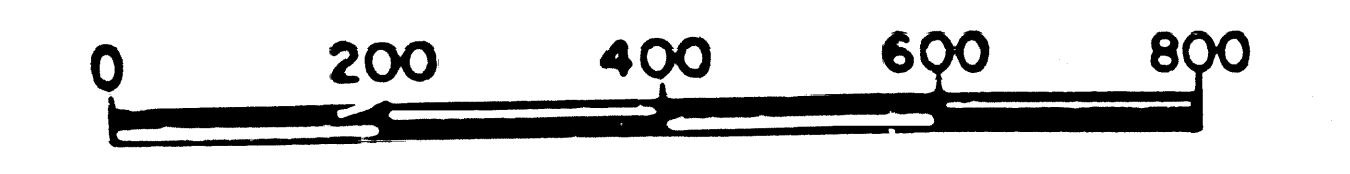
In the City of South Gate, along Route 105 Freeway  
 between Paramount City Limits & Pennsylvania Avenue



INTERSTATE 83

STATE OF CALIFORNIA  
 BUSINESS AND TRANSPORTATION AGENCY  
 DEPARTMENT OF TRANSPORTATION

PROPOSED RELINQUISHMENT



AREA TO BE RELINQUISHED

DR'N BY	S.J.M.	R/W MAP NO.	23477-C
C'LC BY	F.G.B.	CONTRACT NO.	427414
C'K'D BY	K.D.	REL-1050	
REVISED			

R/W MASK.

*Relinquish* 5-13-76



STATE		FEDERAL PROJECT NO.	
CALIF.		I-105-3 (196) 12	
DIST	COUNTY	ROUTE	POST MILES
07	LA	105	15.2
		SHEET NO.	TOTAL SHEETS
		2	2

*Walter L. Kuback*  
RIGHT OF WAY ENGINEERING

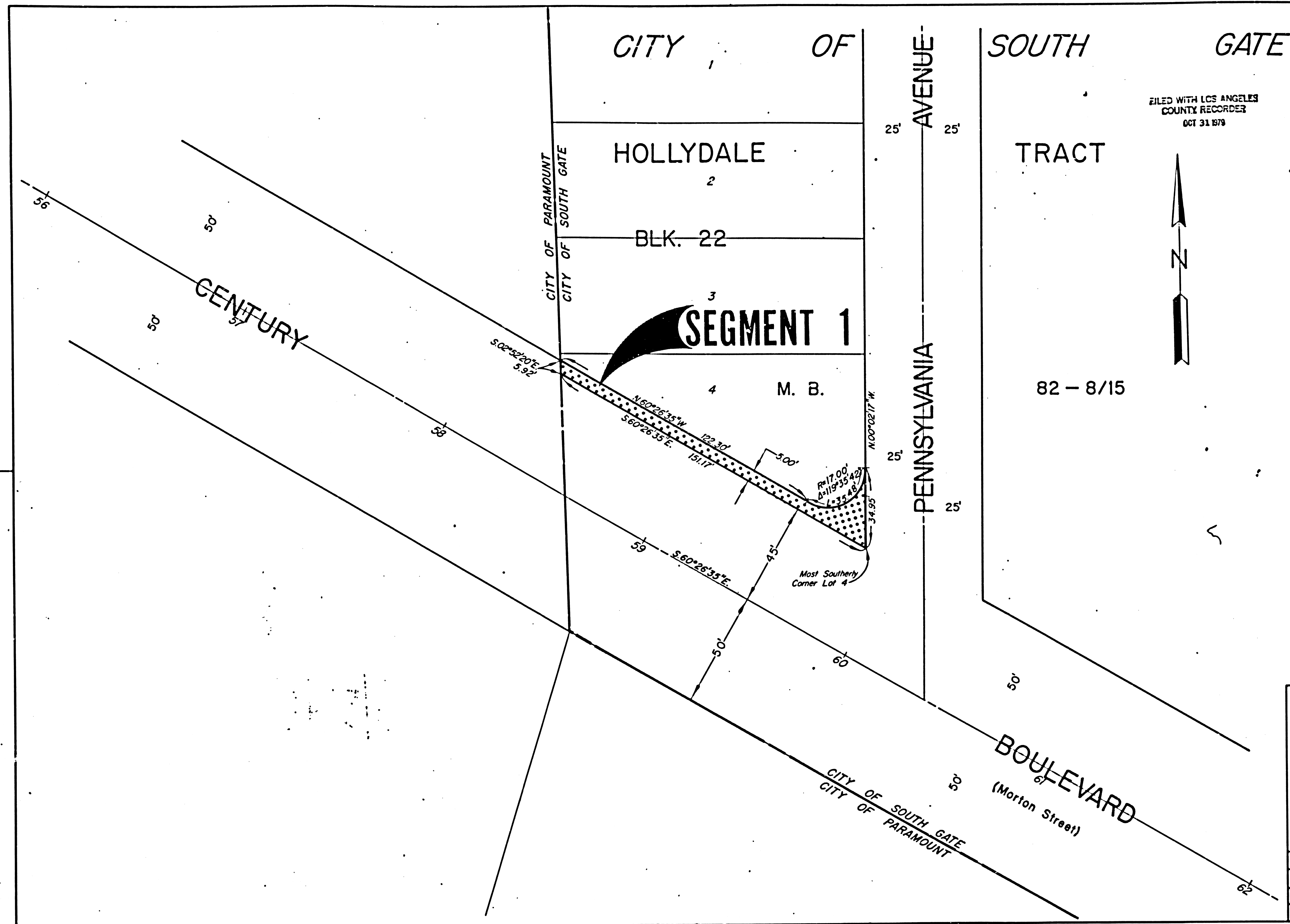
REGISTERED CIVIL ENGINEER NO. 8944

DATE

Recorded in the Office  
of the County Recorder  
LOS ANGELES COUNTY

S.H.M.B. No. Pg.  
DATE

FILED WITH LOS ANGELES  
COUNTY RECORDER  
OCT 31 1979





INTERSTATE (83)

STATE OF CALIFORNIA  
BUSINESS AND TRANSPORTATION AGENCY  
DEPARTMENT OF TRANSPORTATION

PROPOSED RELINQUISHMENT



AREA TO BE RELINQUISHED   
ACCESS PROHIBITED 

DR'N BY	S.J.M.	R/W MAP NO.	23477-C
C'LC BY	F.G.B.	CONTRACT NO.	427414
C'K'D BY	K.D.	REL-1050	
REVISED			

R/W MASK R-2