

STATE OF CALIFORNIA
 BUSINESS AND TRANSPORTATION AGENCY
 DEPARTMENT OF TRANSPORTATION

RIGHT OF WAY MAPS OF
 STATE HIGHWAY
 Culver City Along Venice Boulevard
 Between Bledsoe Ave. and Overland Ave.

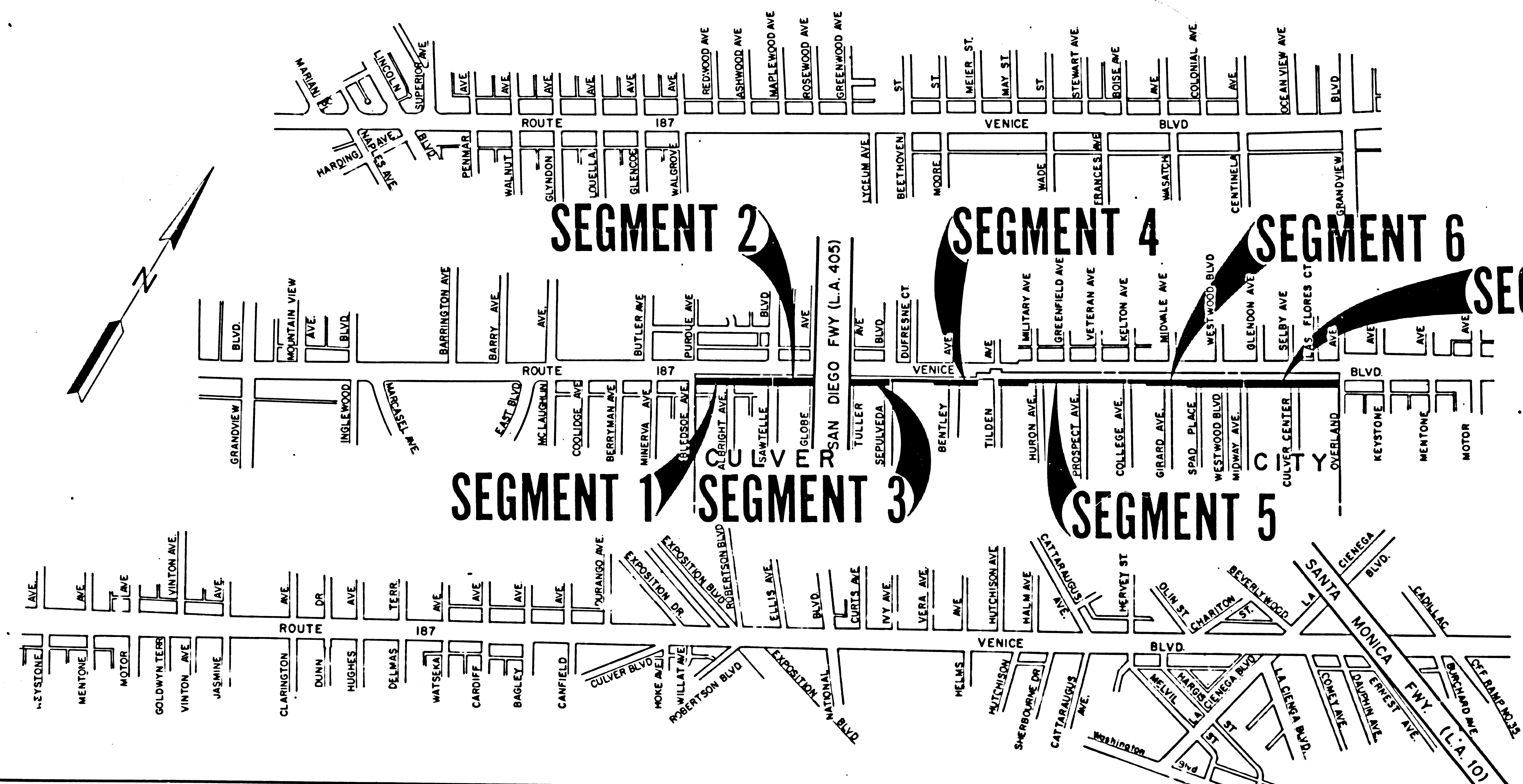
| | | | | | |
|--------|---------------------|-------|------------|-----------|--------------|
| STATE | FEDERAL PROJECT NO. | | | | |
| CALIF. | | | | | |
| DIST | COUNTY | ROUTE | POST MILES | SHEET NO. | TOTAL SHEETS |
| 07 | LA | 187 | 5.3/6.8 | 1 | 5 |

Walter L. Kubasok
 RIGHT OF WAY ENGINEERING
 REGISTERED CIVIL ENGINEER NO. 8944
 DATE 4-28-80

FILED
 AT REQUEST OF
 DEPT. OF PUBLIC WORKS
 MIN. MAY 14 1980
 PAST 1 P.M.
 IN BOOK 16
 AT PAGE 60
 OF STATE HIGHWAY MAPS
 LOS ANGELES COUNTY, CALIF.
 Registrar-Recorder
Shedden
 8 Fee

80-483883

Recorded in the Office
 of the County Recorder
 LOS ANGELES COUNTY
 S.H.M.B. No. Pg.
 DATE



STATE OF CALIFORNIA
 BUSINESS AND TRANSPORTATION AGENCY
 DEPARTMENT OF TRANSPORTATION

THIS MAP FILED IN CONFORMANCE
 WITH ASSEMBLY BILL 477

0 600 1200 1800 2400

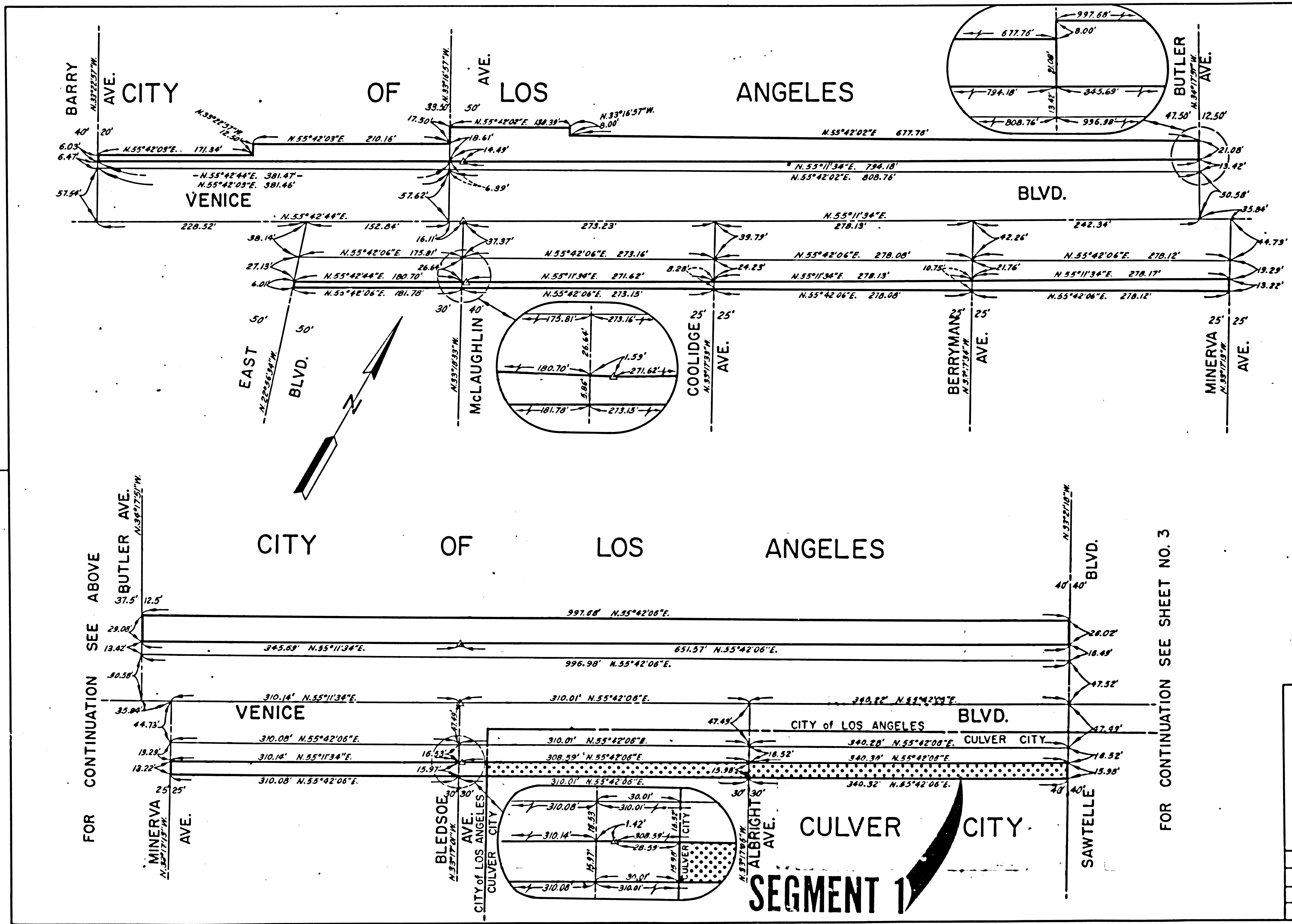
AREA NO LONGER NEEDED FOR
 STATE HIGHWAY PURPOSES

| | | | |
|---------|-----|------------------|---------------------|
| DRN BY | SJM | R.W. MAP NO. | F2317-6.7.8 F2318-1 |
| C/LC BY | RJK | CONTRACT NO. | 07-062214.34.44 |
| C'D BY | RJK | CULVER CITY AREA | |
| REVISED | | MAP Nos. 2,3,4,5 | |

| | | | | | |
|--------|---------------------|-------|------------|-----------|--------------|
| STATE | FEDERAL PROJECT NO. | | | | |
| CALIF. | | | | | |
| DIST | COUNTY | ROUTE | POST MILES | SHEET NO. | TOTAL SHEETS |
| 07 | LA | 187 | 5.3/5.7 | 2 | 5 |

Walter L. Liberaud
 RIGHT OF WAY ENGINEERING
 REGISTERED CIVIL ENGINEER NO. 8944
 4-28-80

DATE
 FILED WITH LOS ANGELES COUNTY RECORDER
 MAY 14 1980



FOR CONTINUATION SEE BELOW

FOR CONTINUATION SEE ABOVE

FOR CONTINUATION SEE SHEET NO. 3

Recorded in the Office
 of the County Recorder
 LOS ANGELES COUNTY
 S.H.M.B. No. Pg.
 DATE

STATE OF CALIFORNIA
 BUSINESS AND TRANSPORTATION AGENCY
 DEPARTMENT OF TRANSPORTATION

THIS MAP FILED IN CONFORMANCE
 WITH ASSEMBLY BILL 477

0 50 100 150 200
 AREA NO LONGER NEEDED FOR
 STATE HIGHWAY PURPOSES

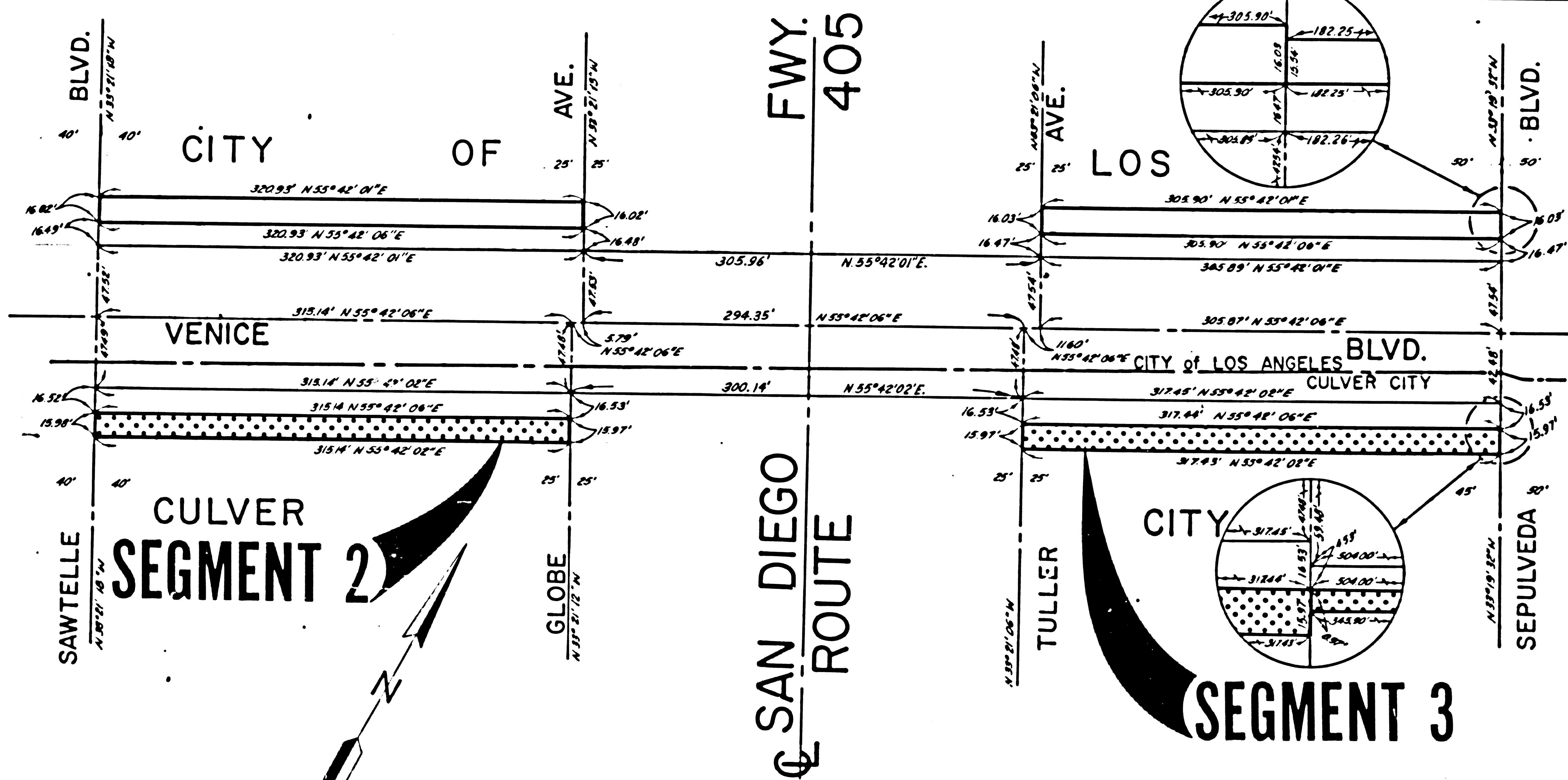
| | | | |
|----------|-----|------------------|-----------|
| DR'N BY | SJM | R/W MAP NO. | F2317-6 |
| C'LC BY | RJK | CONTRACT NO. | 07-062214 |
| C'K'D BY | RJK | CULVER CITY AREA | |
| REVISED | | MAP No. | 2 |

| | | | | |
|-------|---------------------|-------|------------|---------------------------|
| STATE | FEDERAL PROJECT NO. | | | |
| CALIF | | | | |
| DIST | COUNTY | ROUTE | POST MILES | SHEET NO. OF TOTAL SHEETS |
| 07 | LA | 187 | 57/6.1 | 3 / 5 |

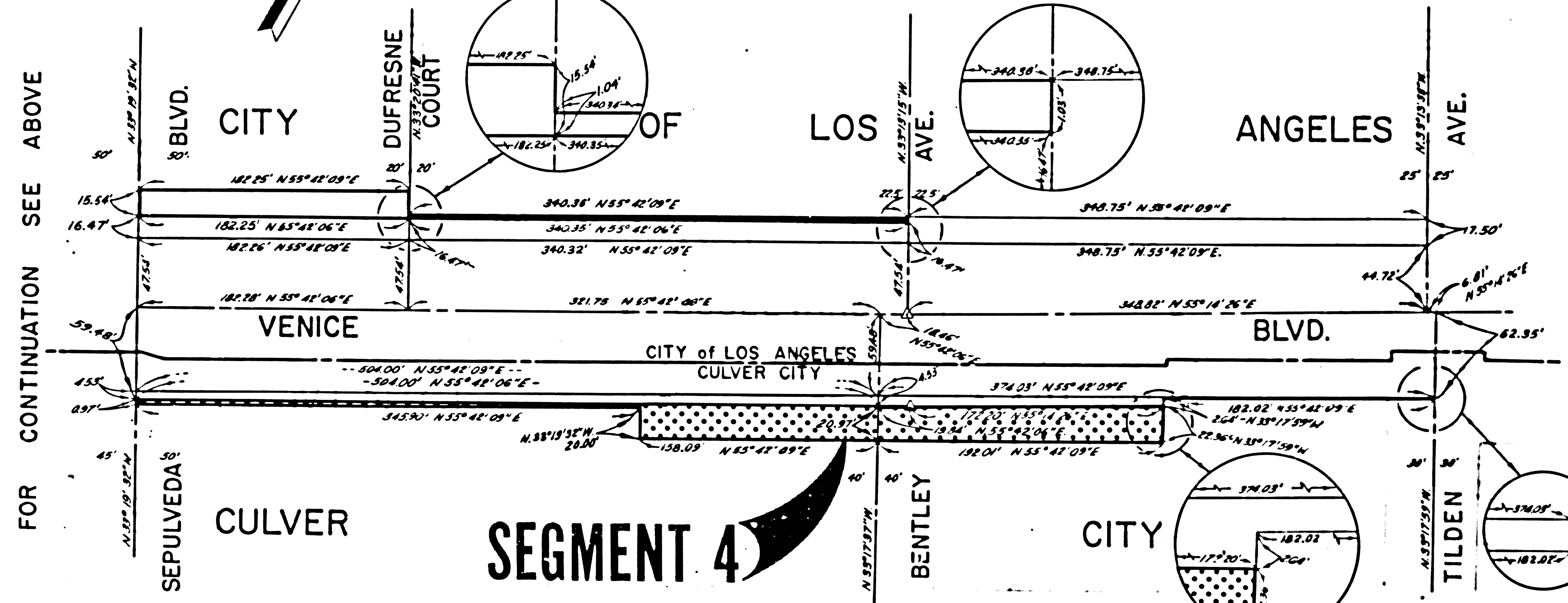
Walter Kuback
 RIGHT OF WAY ENGINEERING
 REGISTERED CIVIL ENGINEER NO. 8944
 4-28-80

DATE
 FILED WITH LOS ANGELES COUNTY RECORDER
 MAY 14 1980

FOR CONTINUATION SEE SHEET NO. 2



FOR CONTINUATION SEE BELOW



FOR CONTINUATION SEE SHEET NO. 4

Recorded in the Office
 of the County Recorder
 LOS ANGELES COUNTY
 S.H.M.B. No. Pg.
 DATE

STATE OF CALIFORNIA
 BUSINESS AND TRANSPORTATION AGENCY
 DEPARTMENT OF TRANSPORTATION

THIS MAP FILED IN CONFORMANCE
 WITH ASSEMBLY BILL 477

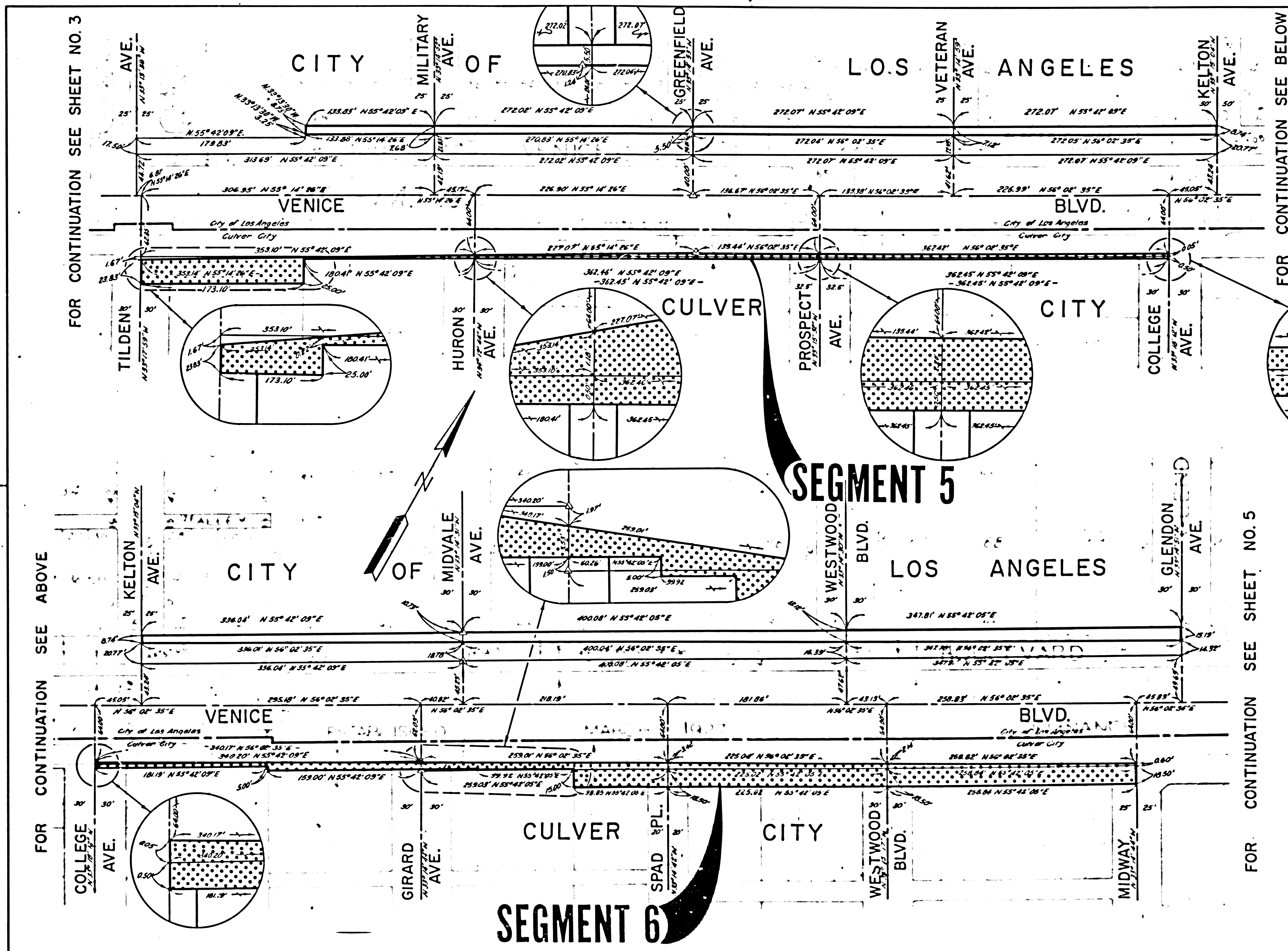
0 50 100 150 200

AREA NO LONGER NEEDED FOR
 STATE HIGHWAY PURPOSES

| | | | |
|---------|-----|------------------|--------------|
| DR'N BY | SJM | R/W MAP NO | F2317-7 |
| CLC BY | RJK | CONTRACT NO | 07-062214.34 |
| CK'D BY | RJK | CULVER CITY AREA | |
| REVISED | | MAP No. 3 | |

| | | | | |
|--------|---------------------|-------|------------|-------------|
| STATE | FEDERAL PROJECT NO. | | | |
| CALIF. | | | | |
| DIST | COUNTY | ROUTE | POST MILES | SHEET TOTAL |
| 07 | LA | 187 | 6.1/6.5 | 4 5 |

Walter L. Ruback
 RIGHT OF WAY ENGINEERING
 REGISTERED CIVIL ENGINEER NO. 8944
 4-28-80
 DATE



FOR CONTINUATION SEE SHEET NO. 3

FOR CONTINUATION SEE ABOVE

FOR CONTINUATION SEE BELOW

FOR CONTINUATION SEE SHEET NO. 5

Recorded in the Office
 of the County Recorder
 LOS ANGELES COUNTY
 S.H.M.B. No. Pg.
 DATE

STATE OF CALIFORNIA
 BUSINESS AND TRANSPORTATION AGENCY
 DEPARTMENT OF TRANSPORTATION

THIS MAP FILED IN CONFORMANCE
 WITH ASSEMBLY BILL 477

0 50 100 150 200

AREA NO LONGER NEEDED FOR
 STATE HIGHWAY PURPOSES

| | | | |
|----------|-----|------------------|-----------|
| DR'N BY | SJM | R/W MAP NO | F2317-8 |
| C'LC BY | RJK | CONTRACT NO | 87-062234 |
| C'K'D BY | RJK | CULVER CITY AREA | |
| REVISED | | MAP No. | 4 |

| | | | | |
|--------|---------------------|-------|------------|------------------------|
| STATE | FEDERAL PROJECT NO. | | | |
| CALIF. | | | | |
| DIST | COUNTY | ROUTE | POST MILES | SHEET NO. TOTAL SHEETS |
| 07 | LA | 187 | 6.5/6.8 | 5 5 |

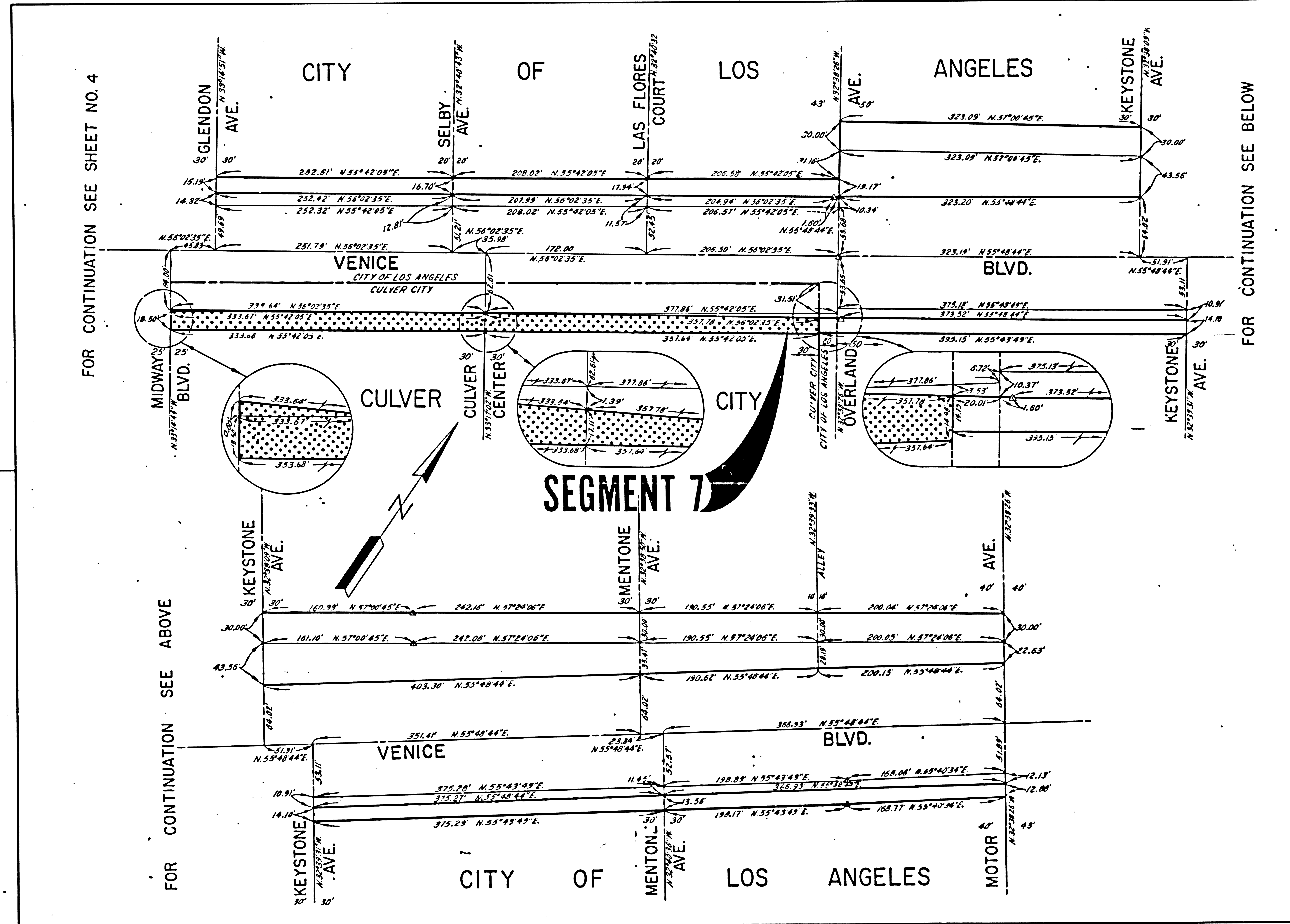
Walter L. Kuback
 RIGHT OF WAY ENGINEERING
 REGISTERED CIVIL ENGINEER NO. 8944
 4-28-80
 DATE

FILED WITH LOS ANGELES COUNTY RECORDER
 MAY 14 1980

Recorded in the Office of the County Recorder
 LOS ANGELES COUNTY
 S.H.M.B. No. Pg.
 DATE

FOR CONTINUATION SEE SHEET NO. 4

FOR CONTINUATION SEE BELOW



FOR CONTINUATION SEE ABOVE

STATE OF CALIFORNIA
 BUSINESS AND TRANSPORTATION AGENCY
 DEPARTMENT OF TRANSPORTATION

THIS MAP FILED IN CONFORMANCE WITH ASSEMBLY BILL 477

0 50 100 150 200

AREA NO LONGER NEEDED FOR STATE HIGHWAY PURPOSES

| | | | |
|----------|-----|------------------|--------------|
| DRN BY | SJM | R/W MAP NO | F2318-1 |
| C/LC BY | RJK | CONTRACT NO | 07-062234.44 |
| C/K'D BY | RJK | CULVER CITY AREA | |
| REVISED | | MAP No. | 5 |