

STATE OF CALIFORNIA
 BUSINESS AND TRANSPORTATION AGENCY
 DEPARTMENT OF TRANSPORTATION

RIGHT OF WAY MAPS OF
 STATE HIGHWAY

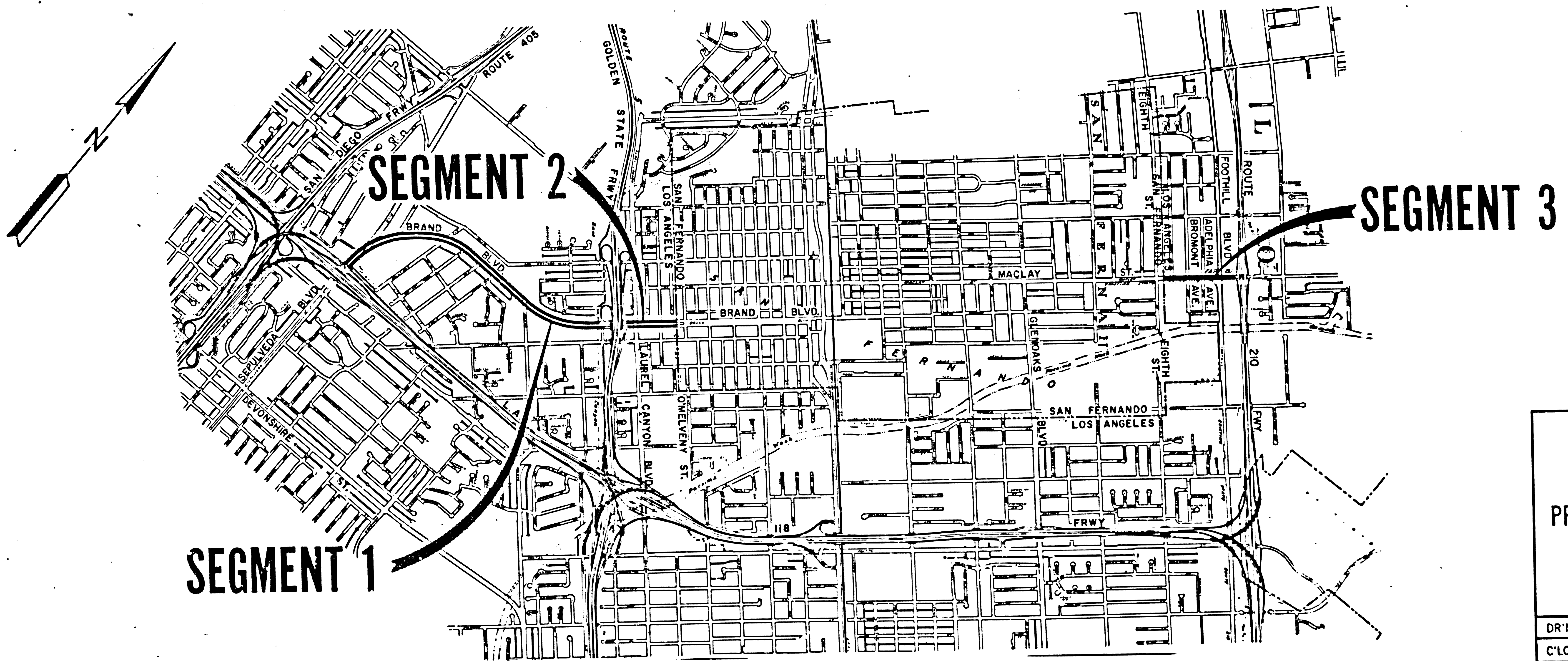
In the City of Los Angeles on Rte. 118 Hwy. (Sepulveda Blvd., Brand Blvd.,
 and Maclay Blvd.) from Rte. 118 Fwy. to Rte. 210 Fwy.

FILED
 AT REQUEST OF
 DEPT. OF PUBLIC WORKS
 AUG 14 1980
 27 1 PM
 IN BOOK 16
 AT PAGE 67
 OF STATE HIGHWAY MAPS
 LOS ANGELES COUNTY, CALIF.
 Registered-Recorder
 L. Palacios
 Free

DIST	COUNTY	ROUTE	POST MILES	SHEET NO.	TOTAL SHEETS
07	LA	118	11.7/15.5	1	4

Walter L. Kilbuck
 RIGHT OF WAY ENGINEERING
 REGISTERED CIVIL ENGINEER NO. 8944
 7-7-80
 DATE

Recorded in the Office
 of the County Recorder
 LOS ANGELES COUNTY
 S.H.M.B. No. Pg.



STATE OF CALIFORNIA
 BUSINESS AND TRANSPORTATION AGENCY
 DEPARTMENT OF TRANSPORTATION

PROPOSED RELINQUISHMENT

0 1200 2400 3600 4800

AREA TO BE RELINQUISHED

DR'N BY V. PROTASOF	R/W MAP NO. P.1351-1, P. 4164-J, F.1198-B
C'LC BY J. C.	CONTRACT NO.
C'K'D BY A. M.	REVISED F.W.

REL-929

DIST	COUNTY	ROUTE	POST MILES	SHEET NO.	TOTAL SHEETS
07	LA	118	11.7/15.5	2	4

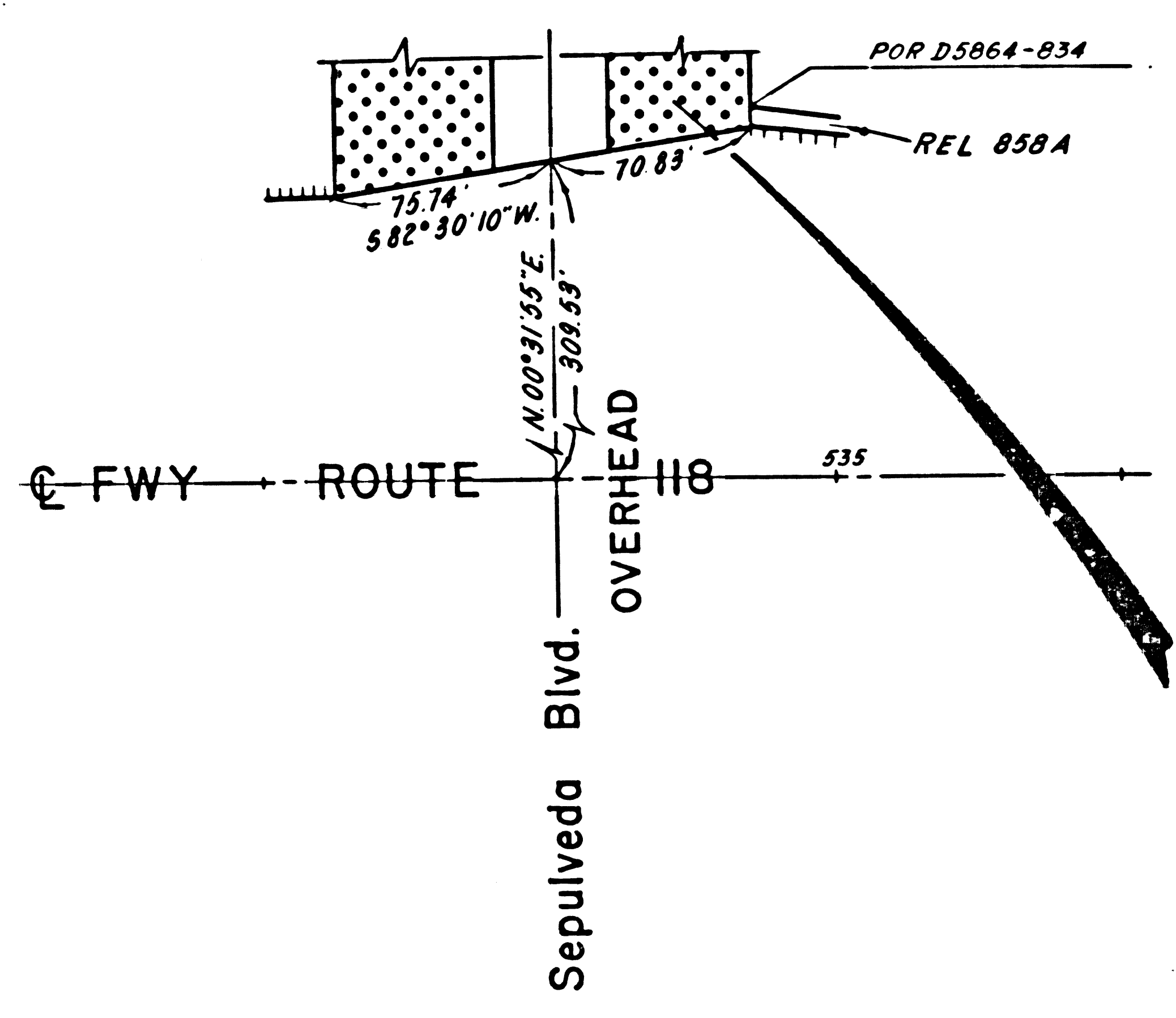
FILED WITH LOS ANGELES
 RECORDER
 AUG 24 1980

Walter L. Kulback
 SENIOR TRANSPORTATION ENGINEER
 RIGHT OF WAY ENGINEERING
 REGISTERED CIVIL ENGINEER NO. 8744
 7-7-80

DATE

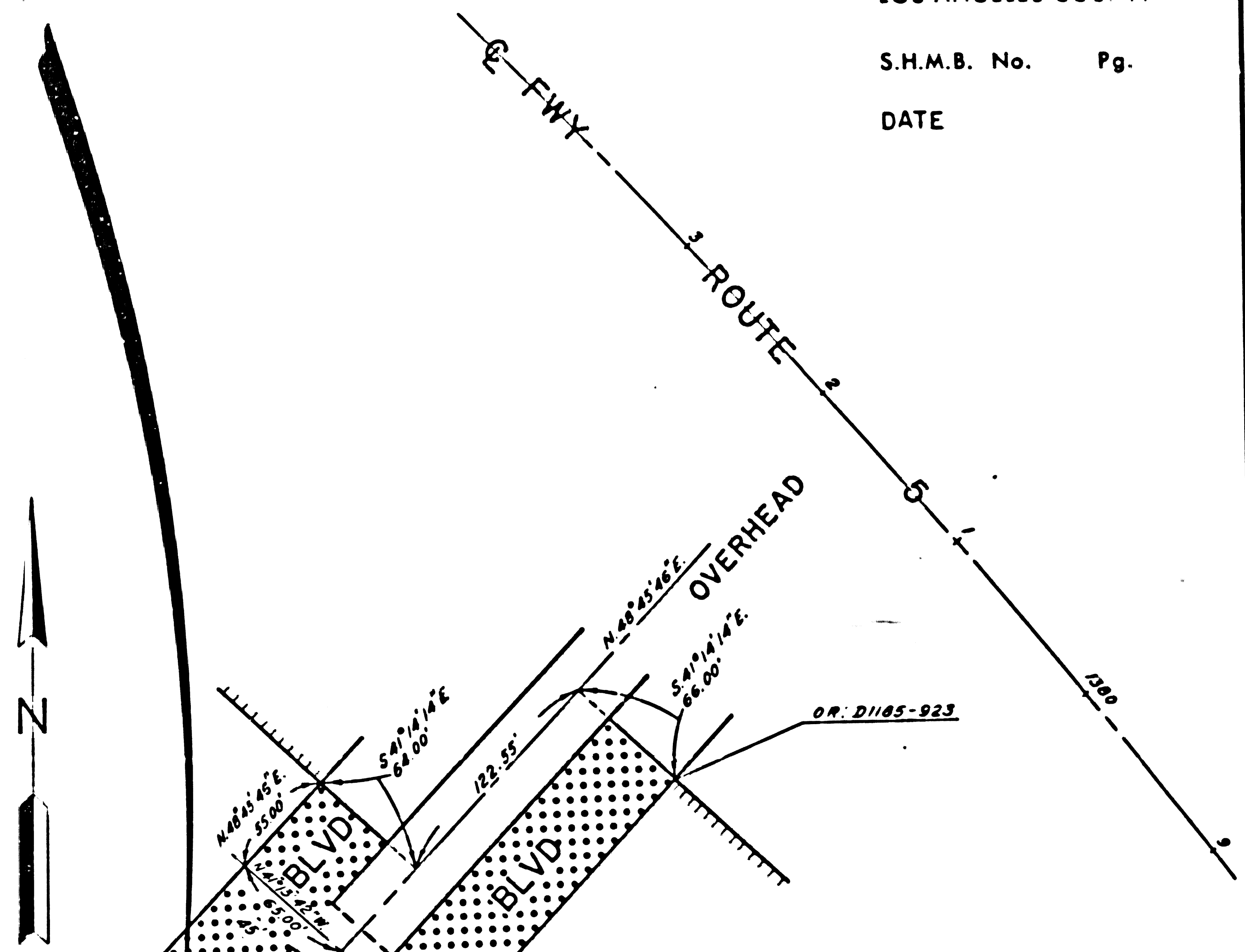
Recorded in the Office
 of the County Recorder
 LOS ANGELES COUNTY

S.H.M.B. No. Pg.
 DATE



SEGMENT 1

CITY OF LOS ANGELES



STATE OF CALIFORNIA
 BUSINESS AND TRANSPORTATION AGENCY
 DEPARTMENT OF TRANSPORTATION

PROPOSED RELINQUISHMENT

0 50 100 150 200

AREA TO BE RELINQUISHED

ACCESS PROHIBITED

DR'N BY V. PROTASOV	R/W MAP NO. P-138-a P-135-1, P-416-a-d
C'LC BY J. C.	CONTRACT NO.
C'K'D BY A. M.	REL-929
REVISED F. W.	

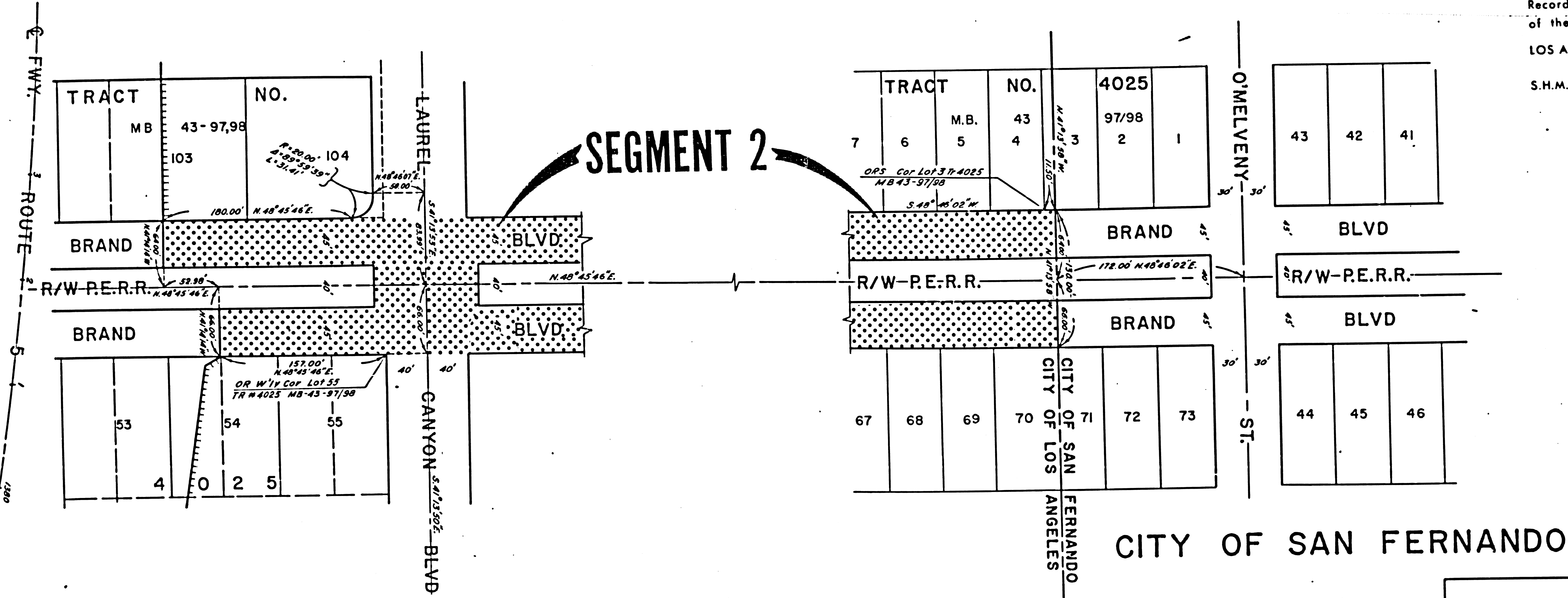
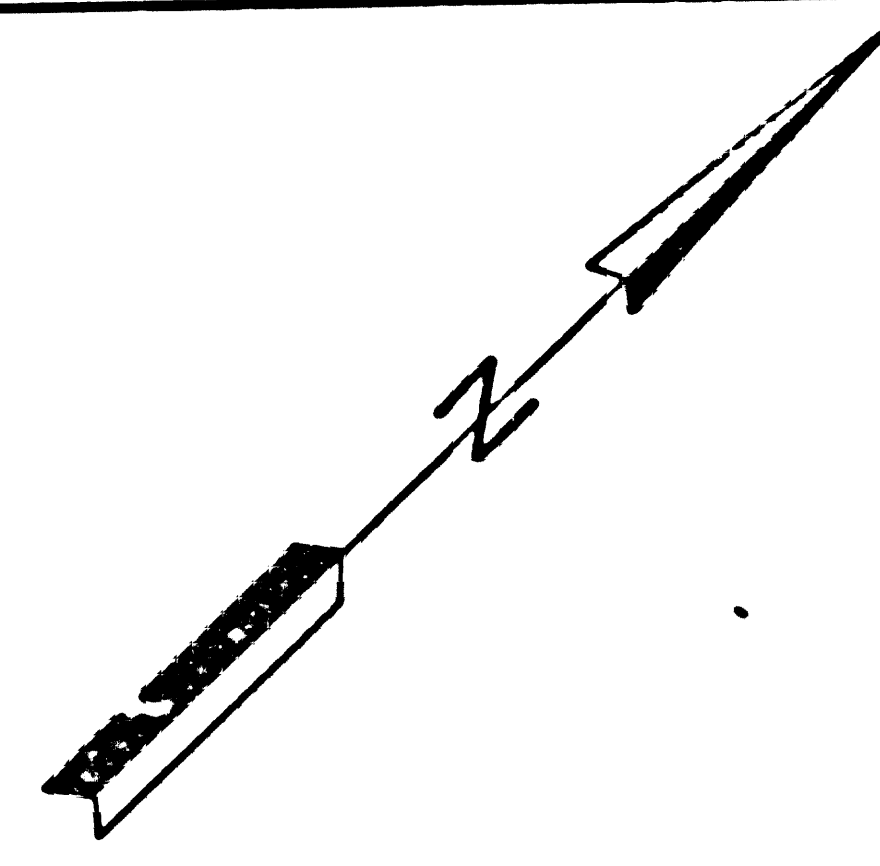
FILED WITH LOS ANGELES
REGISTERED RECORDERS
AUG 14 1980

DIST	COUNTY	ROUTE	POST MILES	SHEET NO.	TOTAL SHEETS
07	L.A.	118	11.7/15.5	3	4

Walter L. Hulbush
SENIOR TRANSPORTATION ENGINEER
RIGHT OF WAY ENGINEERING
REGISTERED CIVIL ENGINEER NO. 8944

7-7-80
DATE

Recorded in the Office
of the County Recorder
LOS ANGELES COUNTY
S.H.M.B. No. Pg.



CITY OF LOS ANGELES

CITY OF SAN FERNANDO

STATE OF CALIFORNIA
BUSINESS AND TRANSPORTATION AGENCY
DEPARTMENT OF TRANSPORTATION

PROPOSED RELINQUISHMENT

0 50 100 150 200

AREA TO BE RELINQUISHED

ACCESS PROHIBITED

DR'N BY <i>K. PROTASOV</i>	R/W MAP NO. <i>P2-4164-4</i>
C'LC BY J. C.	CONTRACT NO.
C'K'D BY A. M.	REL-929
REVISED F. W.	

DIST	COUNTY	ROUTE	POST MILES	SHEET NO.	TOTAL SHEETS
07	L.A.	118	11.7/15.5	4	4

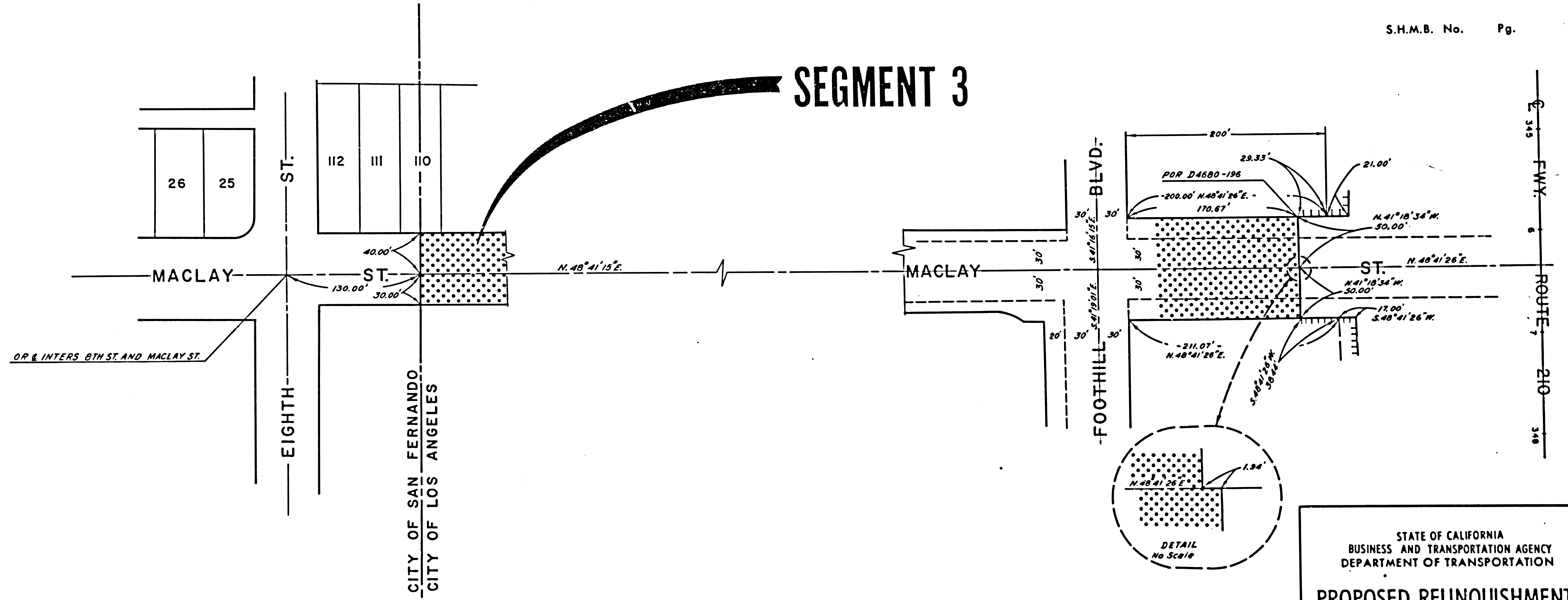
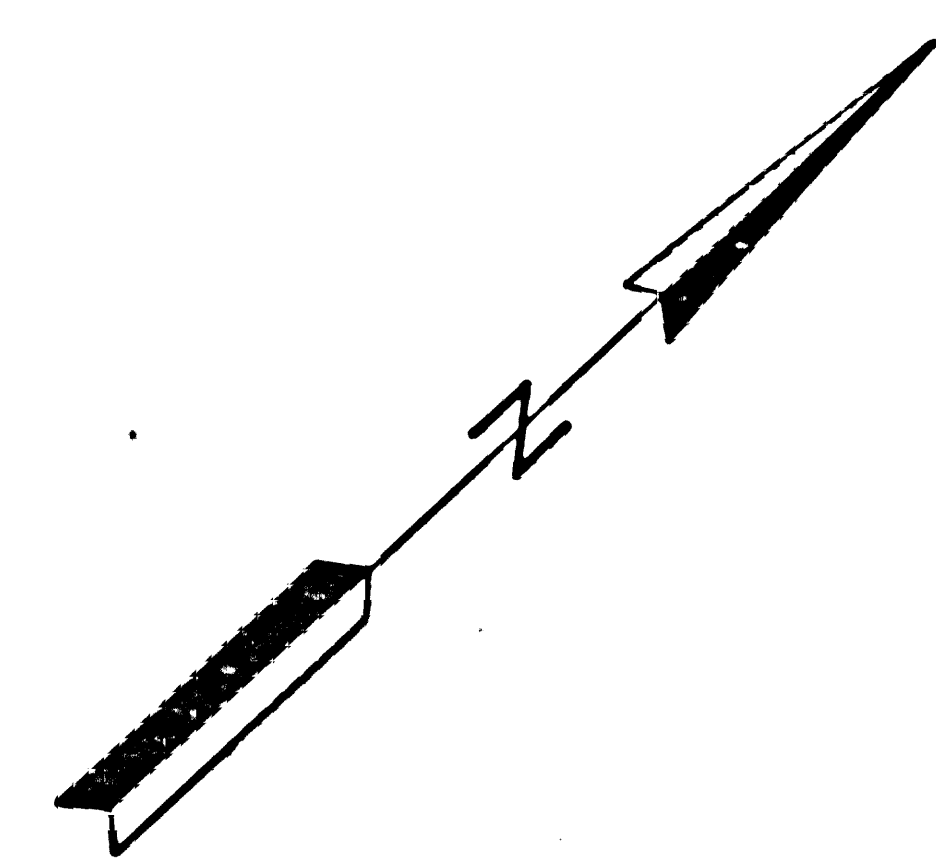
FILED WITH LOS ANGELES
REC'D TOWNSHIP CLERK
AUG 14 1980

Walter Rubasch
SENIOR TRANSPORTATION ENGINEER
RIGHT OF WAY ENGINEERING
REGISTERED CIVIL ENGINEER NO. 894

7-7-80
DATE

Recorded in the Office
of the County Recorder
LOS ANGELES COUNTY

S.H.M.B. No. Pg.



CITY OF LOS ANGELES

STATE OF CALIFORNIA
BUSINESS AND TRANSPORTATION AGENCY
DEPARTMENT OF TRANSPORTATION

PROPOSED RELINQUISHMENT

0 50 100 150 200

AREA TO BE RELINQUISHED ACCESS PROHIBITED

DR'N BY K. PROTASOV	R/W MAP NO. F1198-8, 0143
C'LC BY J.C.	CONTRACT NO.
C'K'D BY A.M.	REL-929
REVISED F.W.	