

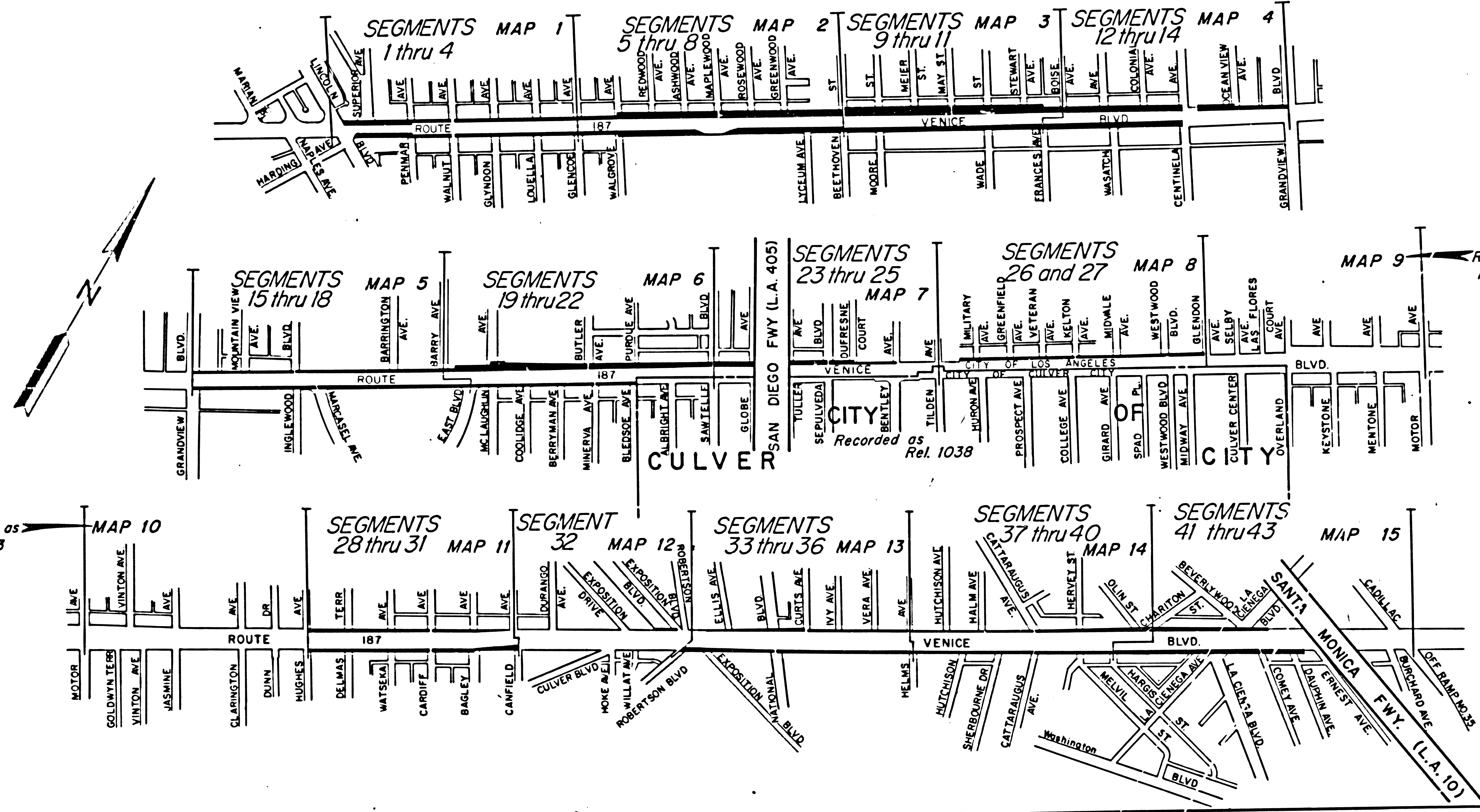
STATE OF CALIFORNIA
 BUSINESS AND TRANSPORTATION AGENCY
 DEPARTMENT OF TRANSPORTATION

80-1240319

STATE		FEDERAL PROJECT NO.	
CALIF.			
DIST	COUNTY	ROUTE	POST MILES
07	LA	187	34/8.9
		SHEET NO.	TOTAL SHEETS
		1	14

Walter L. Kulasek
 RIGHT OF WAY ENGINEERING
 REGISTERED CIVIL ENGINEER NO. 8944
 12-5-80
 DATE

RIGHT OF WAY MAPS OF
 STATE HIGHWAY
 In the City of Los Angeles along Venice Blvd.
 between Lincoln Blvd. and Cadillac Ave.



Recorded in the Office
 of the County Recorder
 LOS ANGELES COUNTY
 S.H.M.B. No. Pg.
 DATE

Recorded as
 Rel. 1053

Recorded as
 Rel. 1038

Recorded as
 Rel. 1053

STATE OF CALIFORNIA
 BUSINESS AND TRANSPORTATION AGENCY
 DEPARTMENT OF TRANSPORTATION

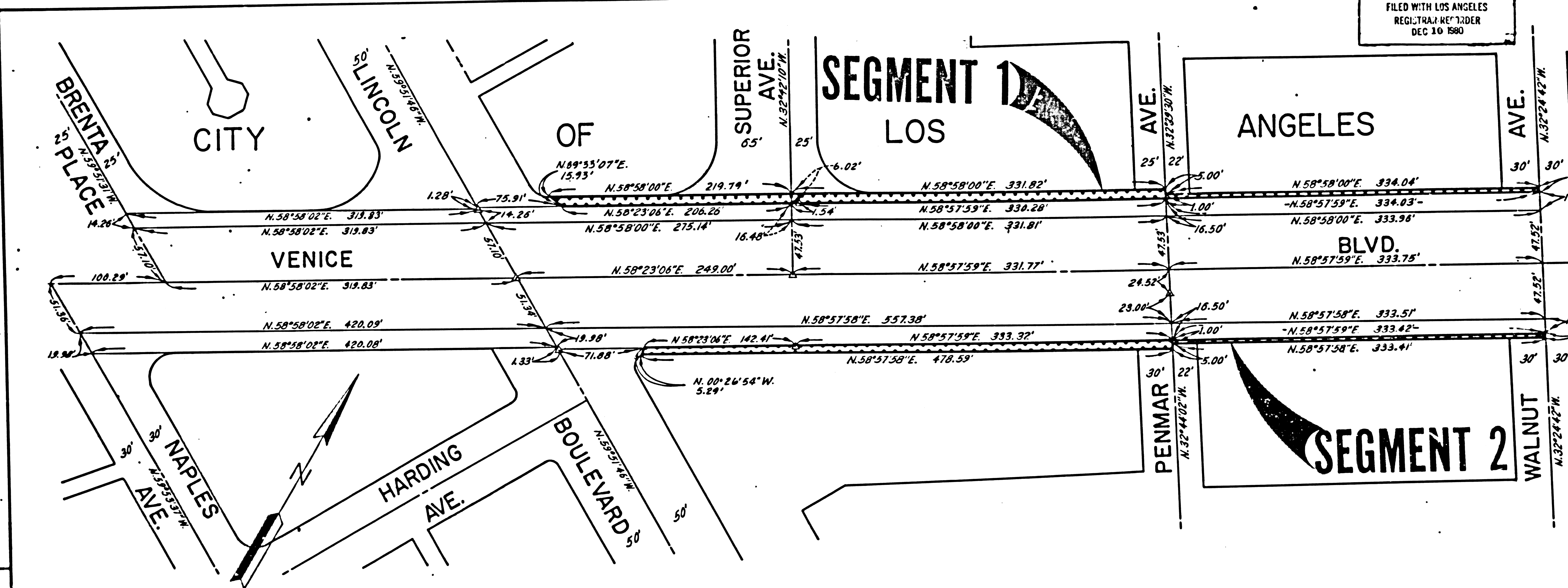
**THIS MAP FILED IN CONFORMANCE
 WITH ASSEMBLY BILL 477**

0 600 1200 1800 2400

AREA NO LONGER NEEDED FOR
 STATE HIGHWAY PURPOSES

DR'N BY	SJM	R/W MAP NO.	F2317B F2318
C'LC BY	RJK	CONTRACT NO.	07-062214 34 44
C'KD BY	RJK	CITY LOS ANGELES AREA	
REVISED		MAP Nos. 1 thru 15	

FILED AS REL. 1021



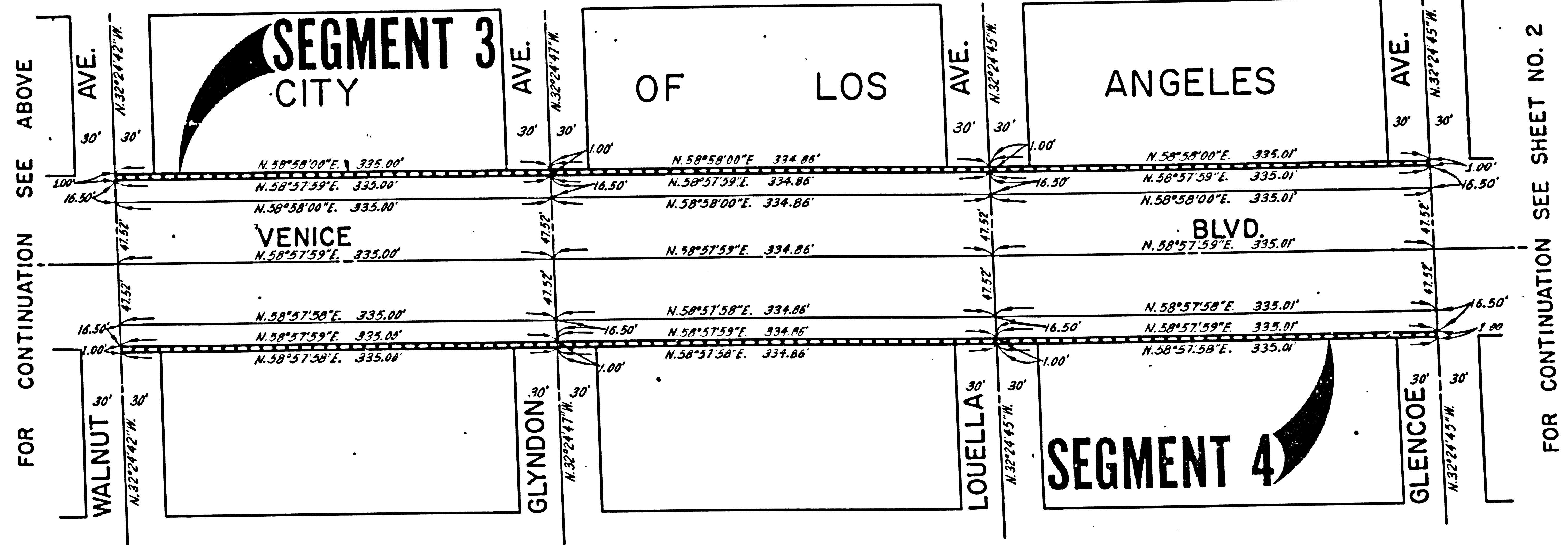
FILED WITH LOS ANGELES
REGISTRAR REORDER
DEC 10 1980

STATE	FEDERAL PROJECT NO.			
CALIF				
DIST	COUNTY	ROUTE	POST MILES	SHEET TOTAL
07	LA	187	3.4/3.9	2 / 14

Walter F. Hubank
RIGHT OF WAY ENGINEERING
REGISTERED CIVIL ENGINEER NO. 8944
12-5-80
DATE

FOR CONTINUATION SEE BELOW

Recorded in the Office
of the County Recorder
LOS ANGELES COUNTY
S.H.M.B. No. Pg.
DATE



FOR CONTINUATION SEE ABOVE

FOR CONTINUATION SEE SHEET NO. 2

STATE OF CALIFORNIA
BUSINESS AND TRANSPORTATION AGENCY
DEPARTMENT OF TRANSPORTATION

THIS MAP FILED IN CONFORMANCE
WITH ASSEMBLY BILL 477

0 50 100 150 200

AREA NO LONGER NEEDED FOR
STATE HIGHWAY PURPOSES

DR'N BY	SJM	R/W MAP NO.	F2317-1
C'LC BY	RJK	CONTRACT NO.	07-062214
CK'D BY	RJK	CITY LOS ANGELES AREA	
REVISED		MAP No. 1	

FILED AS REL. 1021

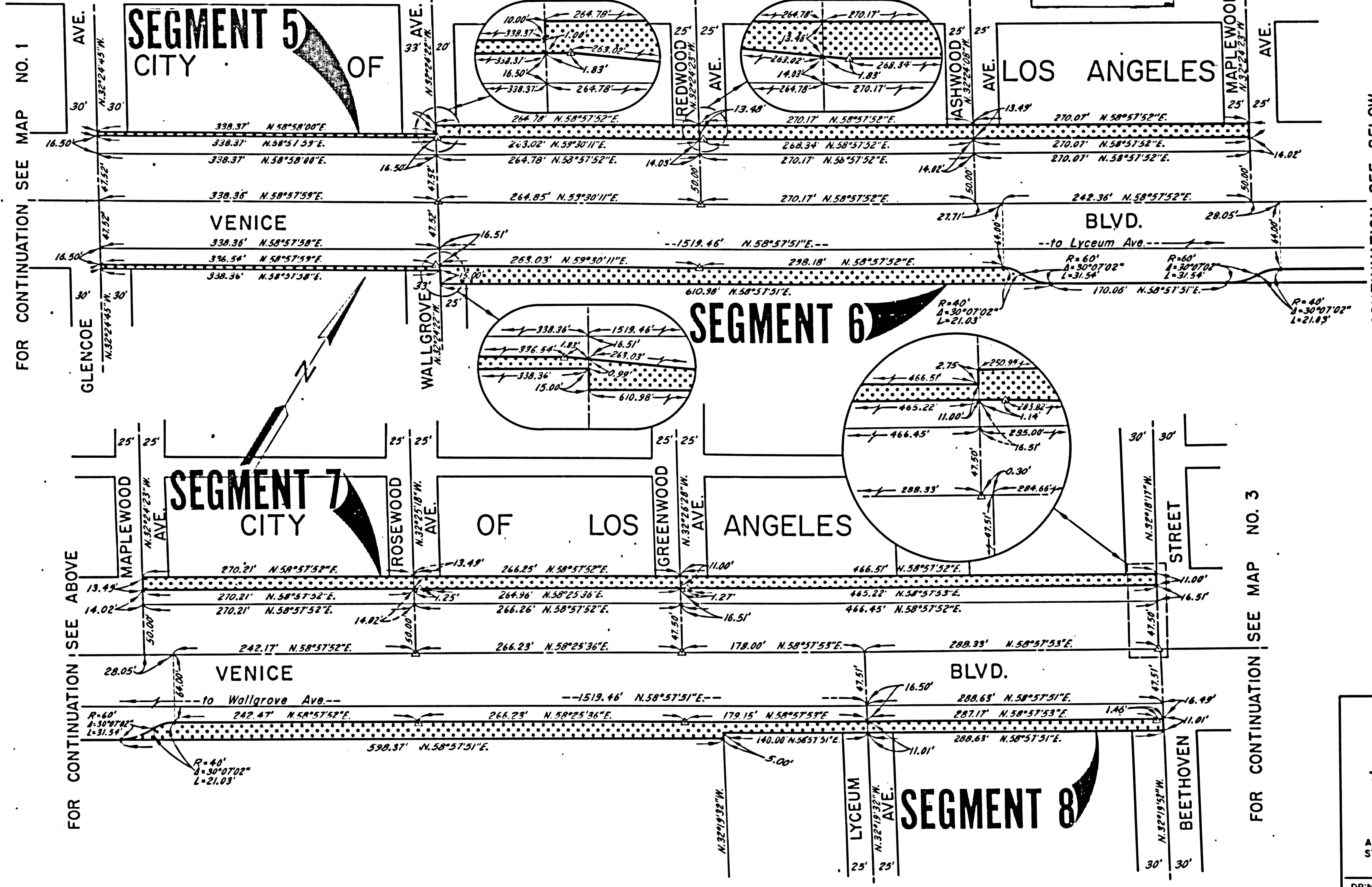
STATE FEDERAL PROJECT NO.

DIST	COUNTY	ROUTE	POST MILES	SHEET NO.	TOTAL SHEETS
07	LA	187	3.9/4.3	3	14

FILED WITH LOS ANGELES
REGISTRATION ORDER
DEC 10 1980

Walter L. Kubaek
RIGHT OF WAY ENGINEERING
REGISTERED CIVIL ENGINEER NO. 8944
12-5-80
DATE

FOR CONTINUATION SEE MAP NO. 1



FOR CONTINUATION SEE BELOW

FOR CONTINUATION SEE ABOVE

FOR CONTINUATION SEE MAP NO. 3

Recorded in the Office
of the County Recorder
LOS ANGELES COUNTY
S.H.M.B. No. Pg.
DATE

STATE OF CALIFORNIA
BUSINESS AND TRANSPORTATION AGENCY
DEPARTMENT OF TRANSPORTATION

**THIS MAP FILED IN CONFORMANCE
WITH ASSEMBLY BILL 477**

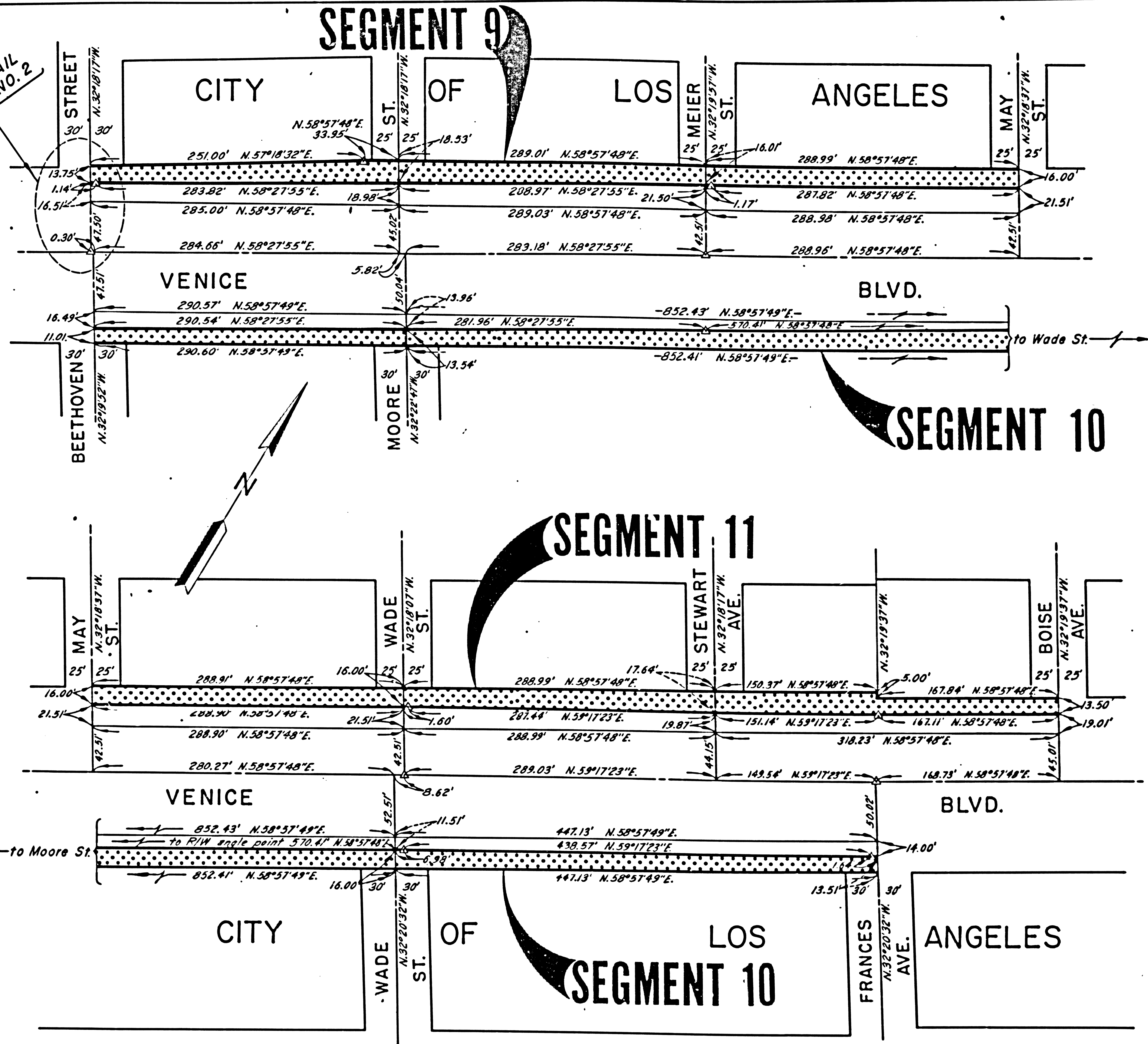
0 50 100 150 200

AREA NO LONGER NEEDED FOR
STATE HIGHWAY PURPOSES

DR'N BY	SJM	R/W MAP NO.	F2317-2
C'LC BY	RJK	CONTRACT NO.	07-062214
C'KD BY	RJK	CITY LOS ANGELES AREA	
REVISED		MAP No. 2	

FOR CONTINUATION SEE MAP NO. 2

SEE DETAIL ON MAP NO. 2



FOR CONTINUATION SEE ABOVE

FOR CONTINUATION SEE BELOW

FILED WITH LOS ANGELES REGISTRAR-RECORDER DEC 10 1980

STATE		FEDERAL PROJECT NO.	
CALIF.			
DIST	COUNTY	ROUTE	POST MILES
07	LA	187	4.3/4.6
		SHEET NO.	TOTAL SHEETS
		4	14

Walter L. Kabanek
 RIGHT OF WAY ENGINEERING
 REGISTERED CIVIL ENGINEER NO. 8944
 12-5-80
 DATE

Recorded in the Office
 of the County Recorder
 LOS ANGELES COUNTY
 S.H.M.B. No. Pg.
 DATE

STATE OF CALIFORNIA
 BUSINESS AND TRANSPORTATION AGENCY
 DEPARTMENT OF TRANSPORTATION

THIS MAP FILED IN CONFORMANCE
 WITH ASSEMBLY BILL 477

0 50 100 150 200

AREA NO LONGER NEEDED FOR
 STATE HIGHWAY PURPOSES

DR'N BY	SJM	R/W MAP NO.	F2317-3
C'LC BY	RJK	CONTRACT NO.	07-062214
C'K'D BY	RJK	CITY LOS ANGELES AREA	
REVISED		MAP No. 3	

FOR CONTINUATION SEE MAP NO. 4

STATE	FEDERAL PROJECT NO.		
CALIF.			
DIST.	COUNTY	ROUTE	POST MILES
07	LA	187	4.6/4.9
		SHEET NO.	TOTAL SHEETS
		5	14

Walter L. Hubank
 RIGHT OF WAY ENGINEERING
 REGISTERED CIVIL ENGINEER NO. 8944
 12-5-80
 DATE

FILED WITH LOS ANGELES
 REGISTRAR RECORDER
 DEC 10 1980

Recorded in the Office
 of the County Recorder
 LOS ANGELES COUNTY
 S.H.M.B. No. Pg.
 DATE

STATE OF CALIFORNIA
 BUSINESS AND TRANSPORTATION AGENCY
 DEPARTMENT OF TRANSPORTATION

THIS MAP FILED IN CONFORMANCE
 WITH ASSEMBLY BILL 477

0 50 100 150 200

AREA NO LONGER NEEDED FOR
 STATE HIGHWAY PURPOSES

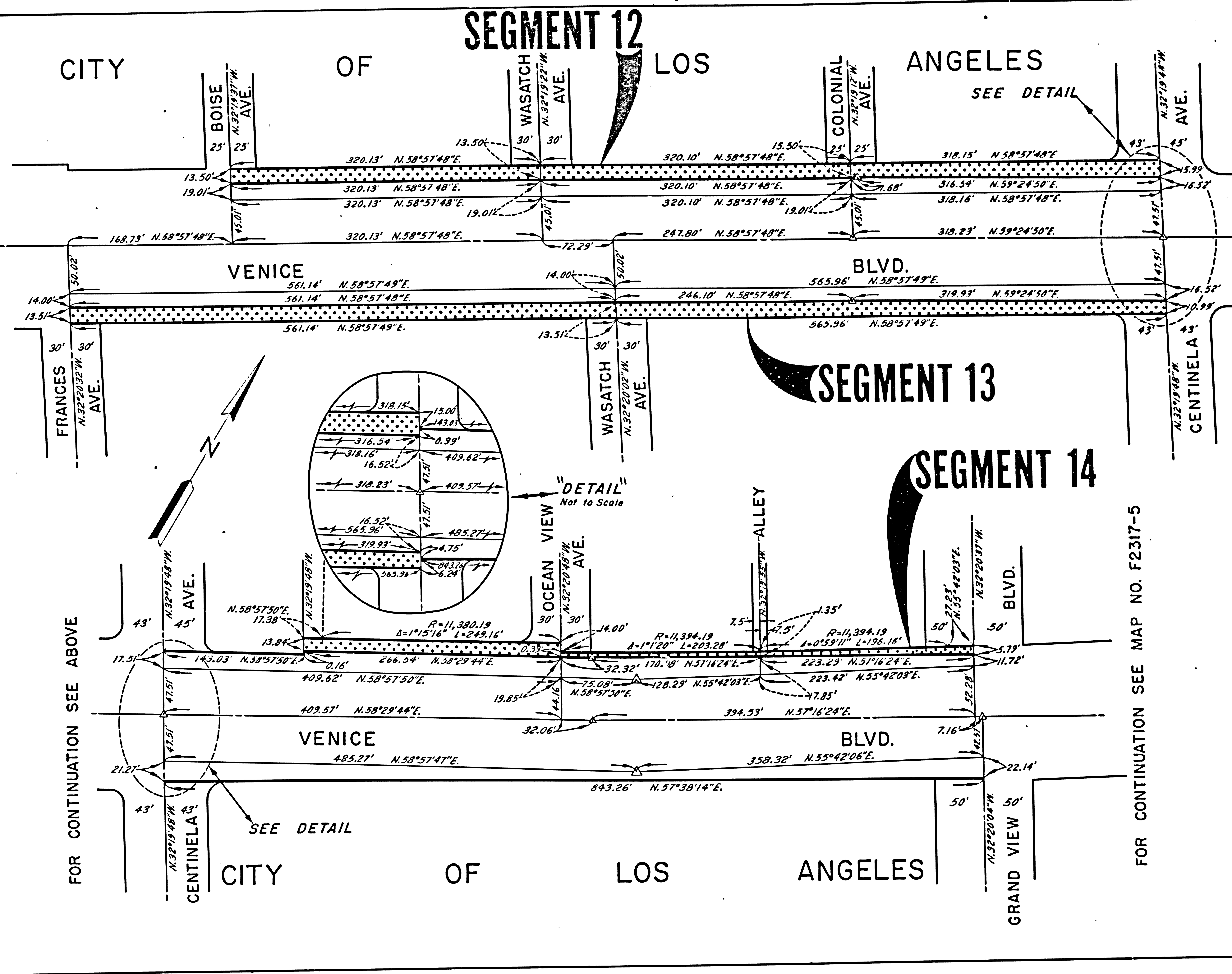
DR'N BY	SJM	R/W MAP NO.	F2317-4
C'LC BY	RJK	CONTRACT NO.	07-062214
C'K'D BY	RJK	CITY LOS ANGELES AREA	
REVISED		MAP No.	4

FOR CONTINUATION SEE MAP NO. F2317-3

FOR CONTINUATION SEE ABOVE

FOR CONTINUATION SEE MAP NO. F2317-5

FOR CONTINUATION SEE BELOW



STATE		FEDERAL PROJECT NO.	
CALIF.			
DIST	COUNTY	ROUTE	POST MILES
07	LA	187	4.9/5.3
		SHEET NO.	TOTAL SHEETS
		6	14

Walter L. Kuback
 RIGHT OF WAY ENGINEERING
 REGISTERED CIVIL ENGINEER NO. 8944
 12-5-80
 DATE

FILED WITH LOS ANGELES
 REGISTRAR RECORDER
 DEC 10 1980

Recorded in the Office
 of the County Recorder
 LOS ANGELES COUNTY
 S.H.M.B. No. Pg.
 DATE

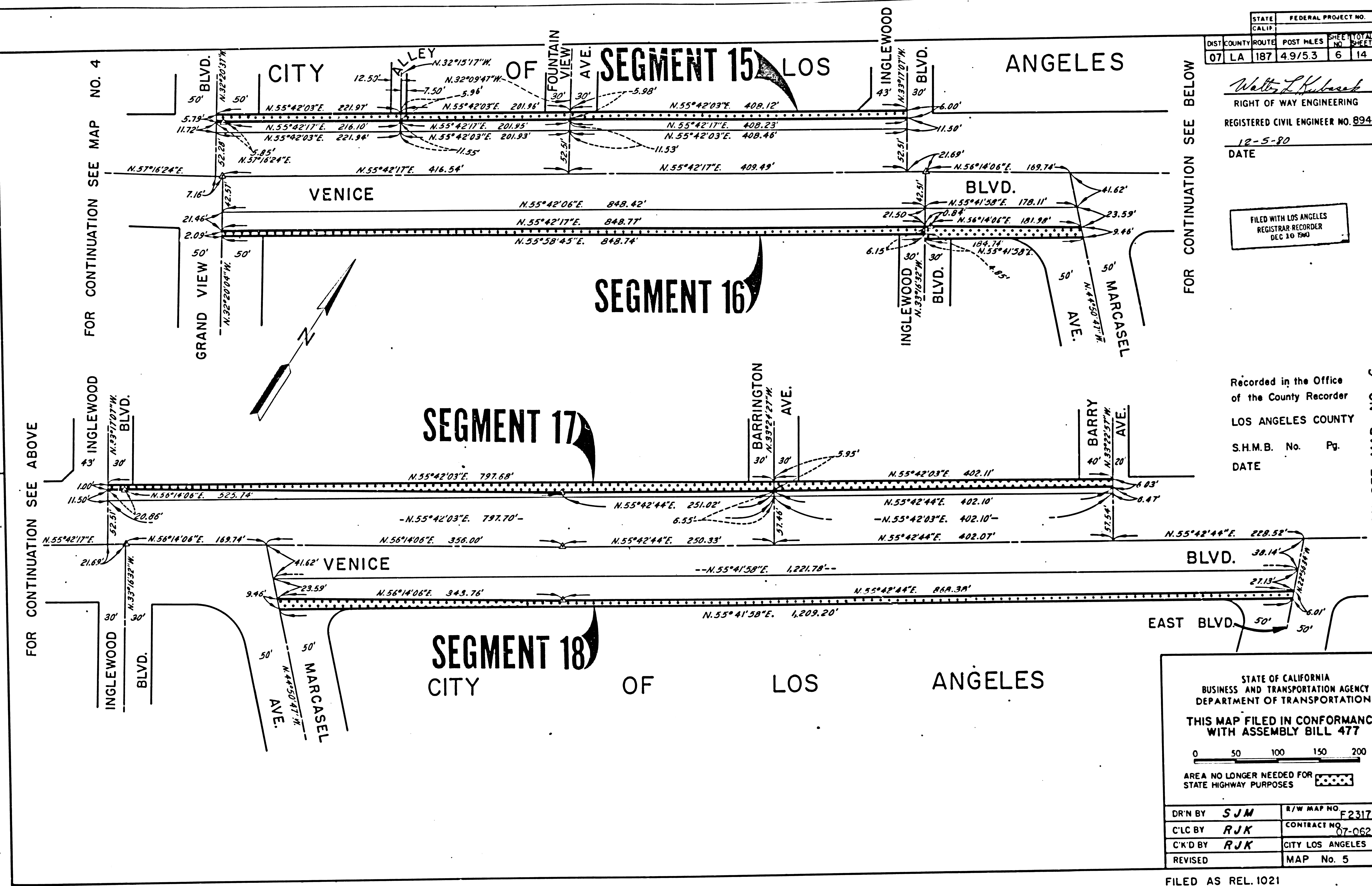
STATE OF CALIFORNIA
 BUSINESS AND TRANSPORTATION AGENCY
 DEPARTMENT OF TRANSPORTATION
 THIS MAP FILED IN CONFORMANCE
 WITH ASSEMBLY BILL 477

0 50 100 150 200

AREA NO LONGER NEEDED FOR
 STATE HIGHWAY PURPOSES

DR'N BY	SJM	R/W MAP NO.	F2317-5
C'LC BY	RJK	CONTRACT NO.	07-062214
C'K'D BY	RJK	CITY LOS ANGELES AREA	
REVISED		MAP No.	5

FILED AS REL. 1021



FOR CONTINUATION SEE MAP NO. 4

FOR CONTINUATION SEE ABOVE

FOR CONTINUATION SEE BELOW

FOR CONTINUATION SEE MAP NO. 6

STATE	FEDERAL PROJECT NO.				
CALIF.					
DIST	COUNTY	ROUTE	POST MILES	PREL. TOTAL	
07	LA	187	5.3/5.7	7	14

Walter I. Kuback
 RIGHT OF WAY ENGINEERING
 REGISTERED CIVIL ENGINEER NO. 8944
 12-5-80
 DATE

FILED WITH LOS ANGELES
 REGISTRAR RECORDER
 DEC 10 1980

Recorded in the Office of
 the County Recorder
 LOS ANGELES COUNTY
 S.H.M.B. No. Pg.
 DATE

FOR CONTINUATION SEE BELOW

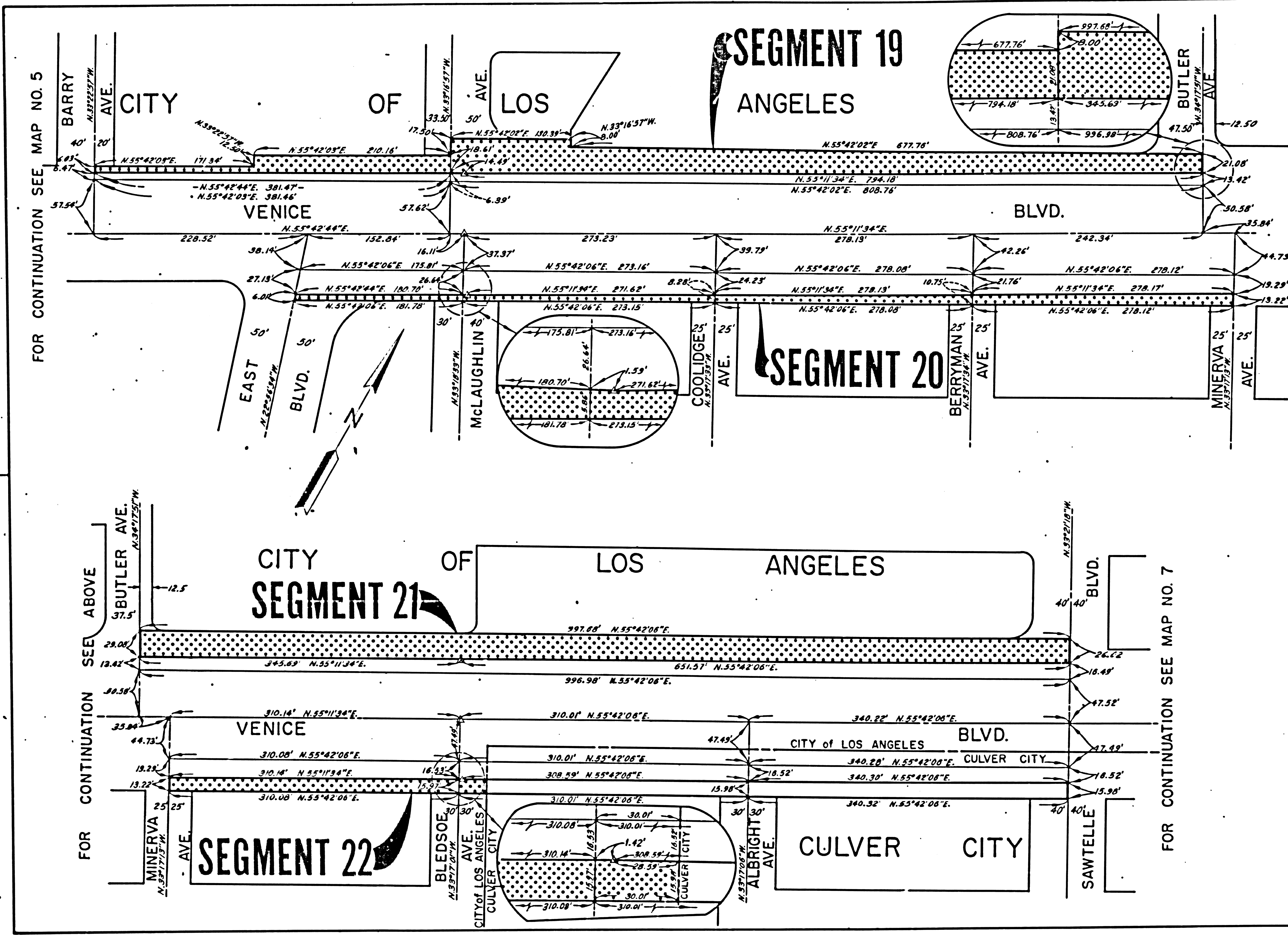
FOR CONTINUATION SEE MAP NO. 7



AREA NO LONGER NEEDED FOR STATE HIGHWAY PURPOSES

DR'N BY	SJM	R/W MAP NO.	F2317-6
C'LC BY	RJK	CONTRACT NO.	07-062214
C'K'D BY	RJK	CITY LOS ANGELES AREA	
REVISED		MAP No.	6

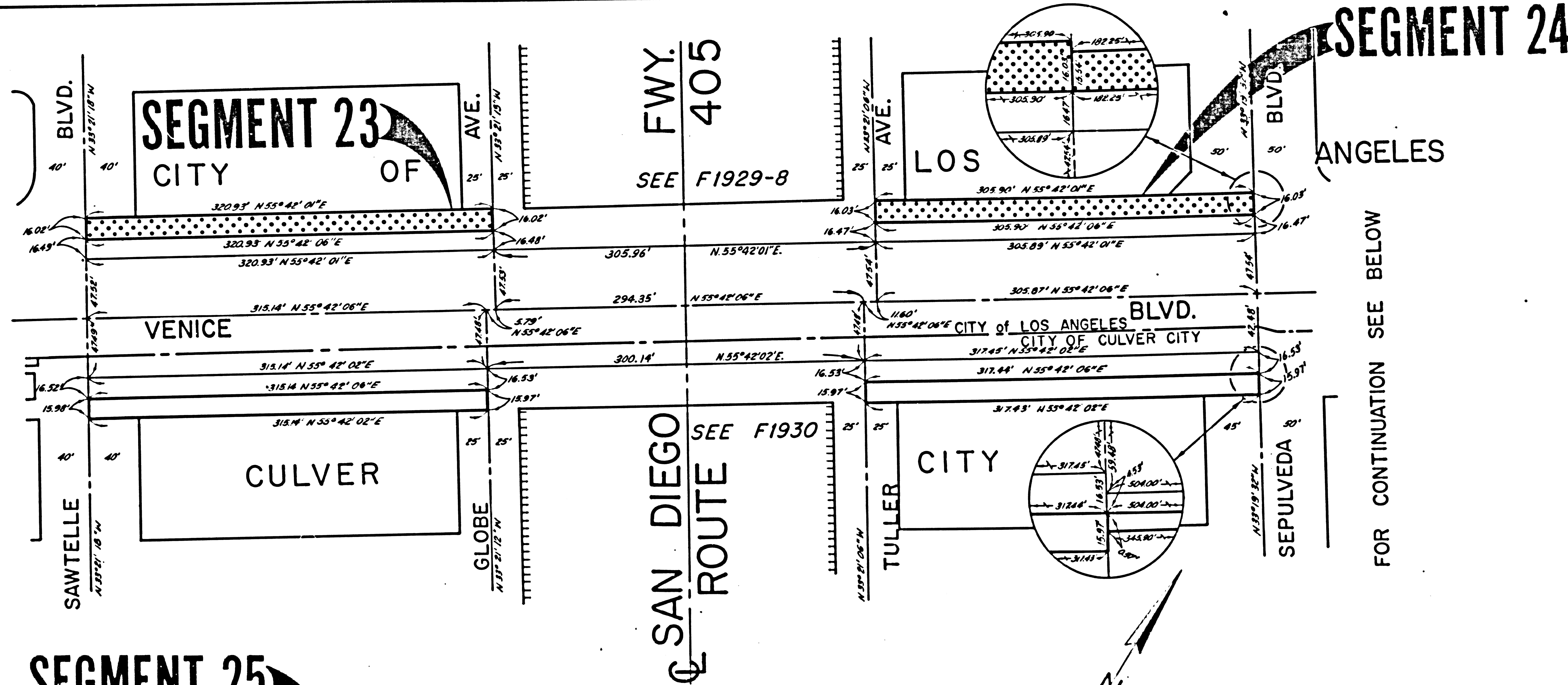
FILED AS REL. 1021



FOR CONTINUATION SEE MAP NO. 5

FOR CONTINUATION SEE ABOVE

FOR CONTINUATION SEE MAP NO. 6



SEGMENT 24

STATE	FEDERAL PROJECT NO.		
CALIF.			
DIST. COUNTY ROUTE	POST MILES	SHEET NO.	TOTAL SHEETS
07 LA 187	5.7/6.1	8	14

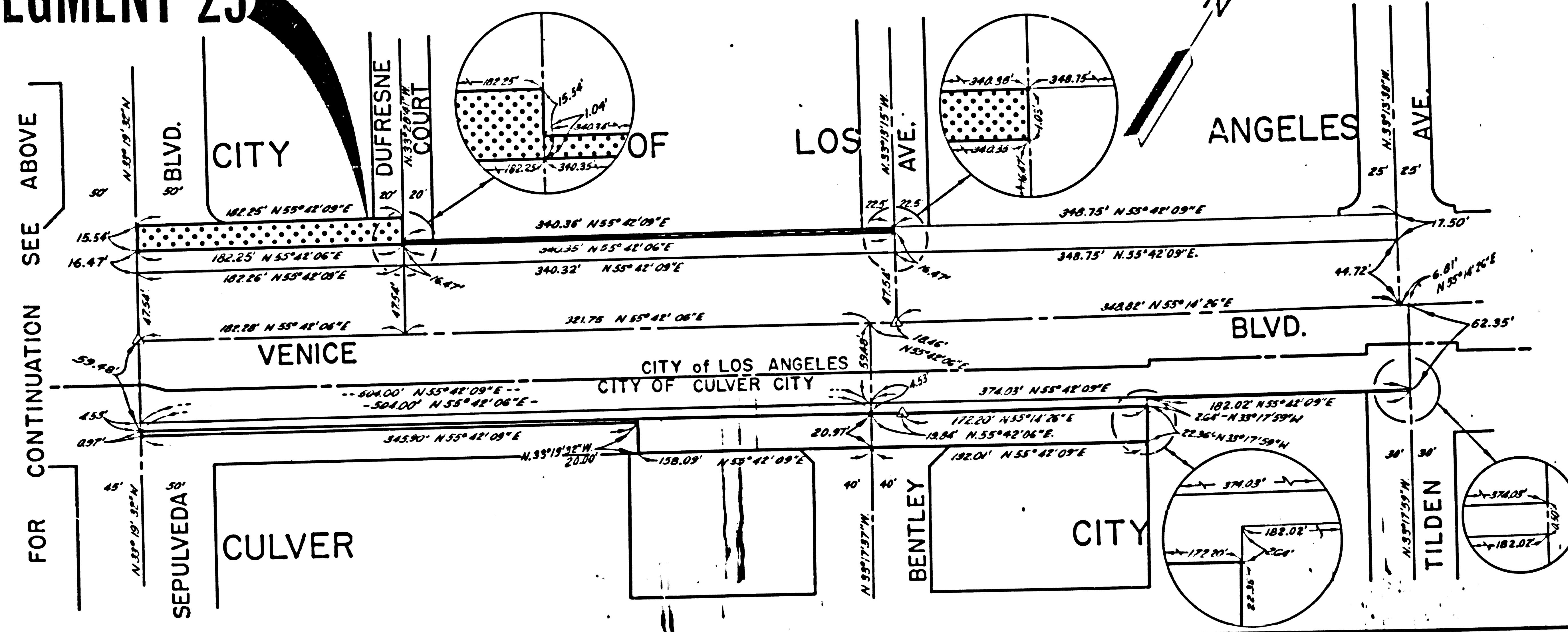
Walter L. Kurbach
 RIGHT OF WAY ENGINEERING
 REGISTERED CIVIL ENGINEER NO. 8944
 12-5-80
 DATE

FILED WITH LOS ANGELES
 REGISTRAR RECORDER
 DEC 10 1980

Recorded in the Office
 of the County Recorder
 LOS ANGELES COUNTY
 S.H.M.B. No. Pg.
 DATE

FOR CONTINUATION SEE BELOW

SEGMENT 25



FOR CONTINUATION SEE ABOVE

FOR CONTINUATION SEE MAP NO. 8

STATE OF CALIFORNIA
 BUSINESS AND TRANSPORTATION AGENCY
 DEPARTMENT OF TRANSPORTATION

**THIS MAP FILED IN CONFORMANCE
 WITH ASSEMBLY BILL 477**

0 50 100 150 200

AREA NO LONGER NEEDED FOR
 STATE HIGHWAY PURPOSES

DR'N BY	SJM	R/W MAP NO.	E2317-7
C'LC BY	RJK	CONTRACT NO.	07-062214
C'K'D BY	RJK	CITY LOS ANGELES AREA	
REVISED		MAP No.	7

STATE	FEDERAL PROJECT NO.		
CALIF.			
DIST	COUNTY	ROUTE	POST MILES
07	LA	187	6.1/6.5
		SHEET NO.	TOTAL SHEETS
		9	14

Walter L. Kuba
 RIGHT OF WAY ENGINEERING
 REGISTERED CIVIL ENGINEER NO. 8944
 12-5-80
 DATE

FILED WITH LOS ANGELES
 REGISTRAR RECORDER
 DEC 10 1980

Recorded in the Office
 of the County Recorder
 LOS ANGELES COUNTY
 S.H.M.B. No. Pg.
 DATE

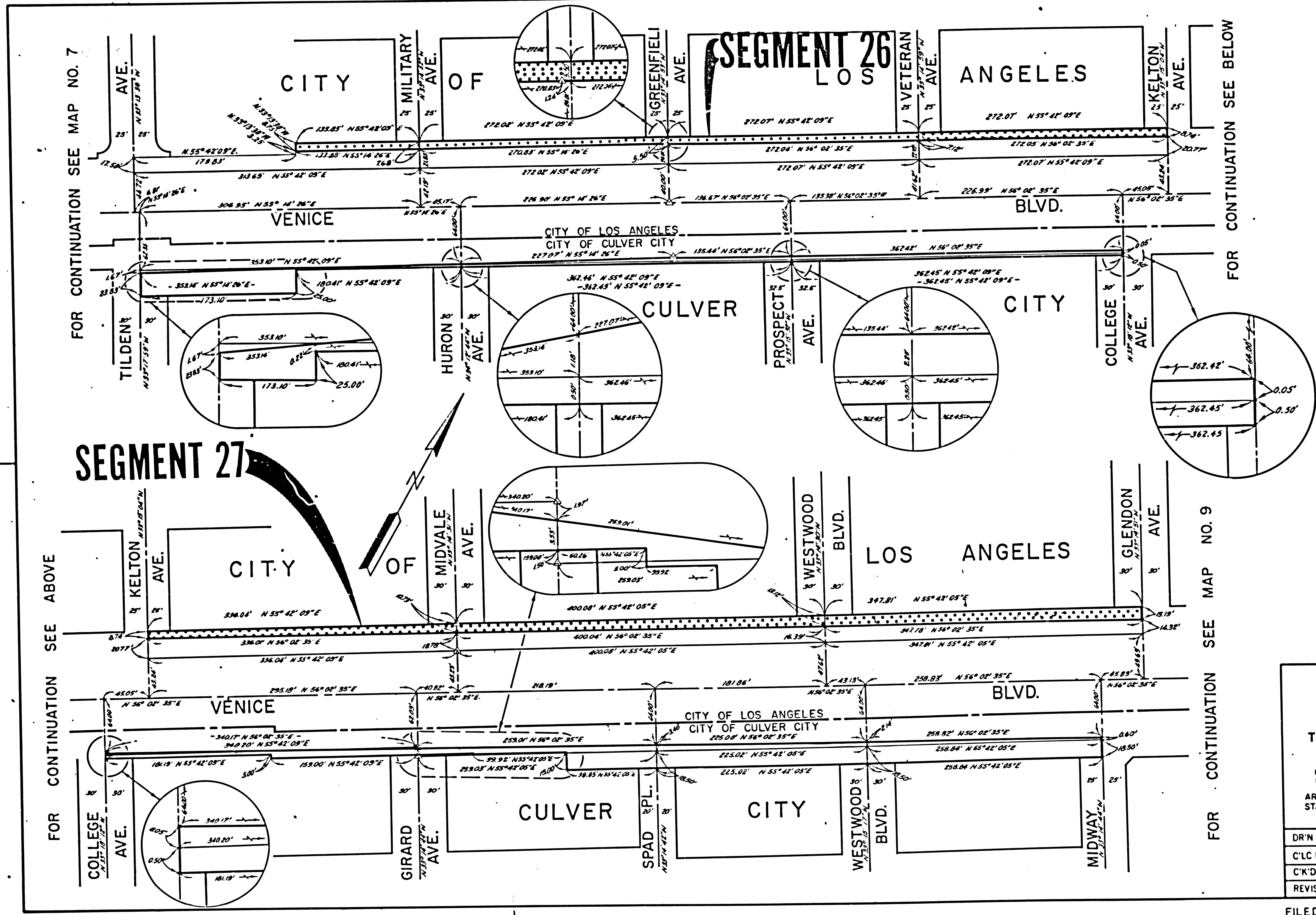
STATE OF CALIFORNIA
 BUSINESS AND TRANSPORTATION AGENCY
 DEPARTMENT OF TRANSPORTATION

**THIS MAP FILED IN CONFORMANCE
 WITH ASSEMBLY BILL 477**

0 50 100 150 200

AREA NO LONGER NEEDED FOR
 STATE HIGHWAY PURPOSES

DR'N BY	SJM	R/W MAP NO.	F2317-8
C'LC BY	RJK	CONTRACT NO.	07-062234
C'K'D BY	RJK	CITY LOS ANGELES AREA	
REVISED		MAP No.	8



FOR CONTINUATION SEE MAP NO. 7

FOR CONTINUATION SEE ABOVE

FOR CONTINUATION SEE BELOW

FOR CONTINUATION SEE MAP NO. 9

STATE	FEDERAL PROJECT NO.		
CALIF.			
DIST	COUNTY	ROUTE	POST MILES
07	LA	187	76/7.8
			SHEET TOTAL
			11 14

Recorded in the Office
of the County Recorder
LOS ANGELES COUNTY
S.H.M.B. No. Pg.
DATE

Walter L. Kuback
RIGHT OF WAY ENGINEERING
REGISTERED CIVIL ENGINEER NO. 8944
12-5-30
DATE

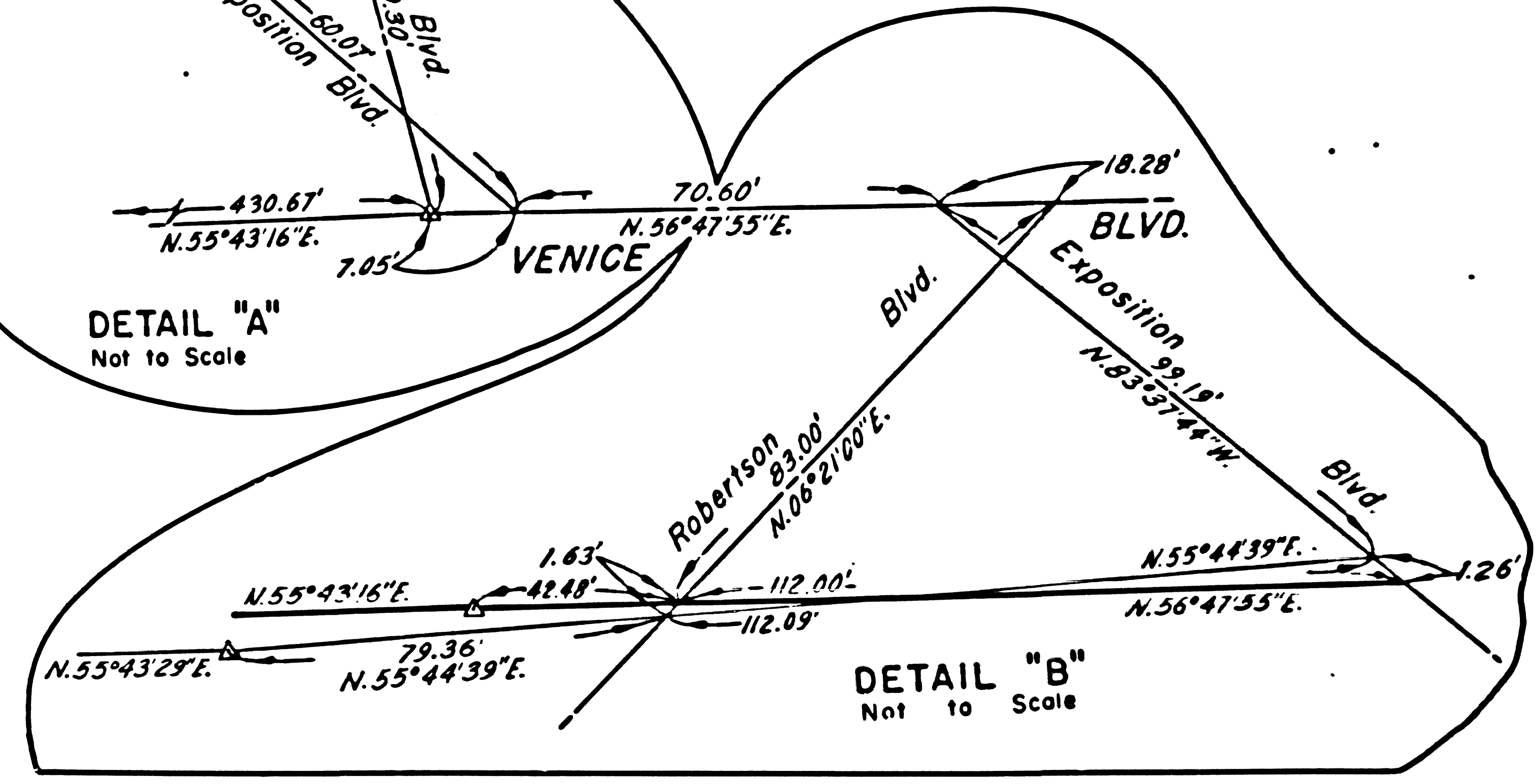
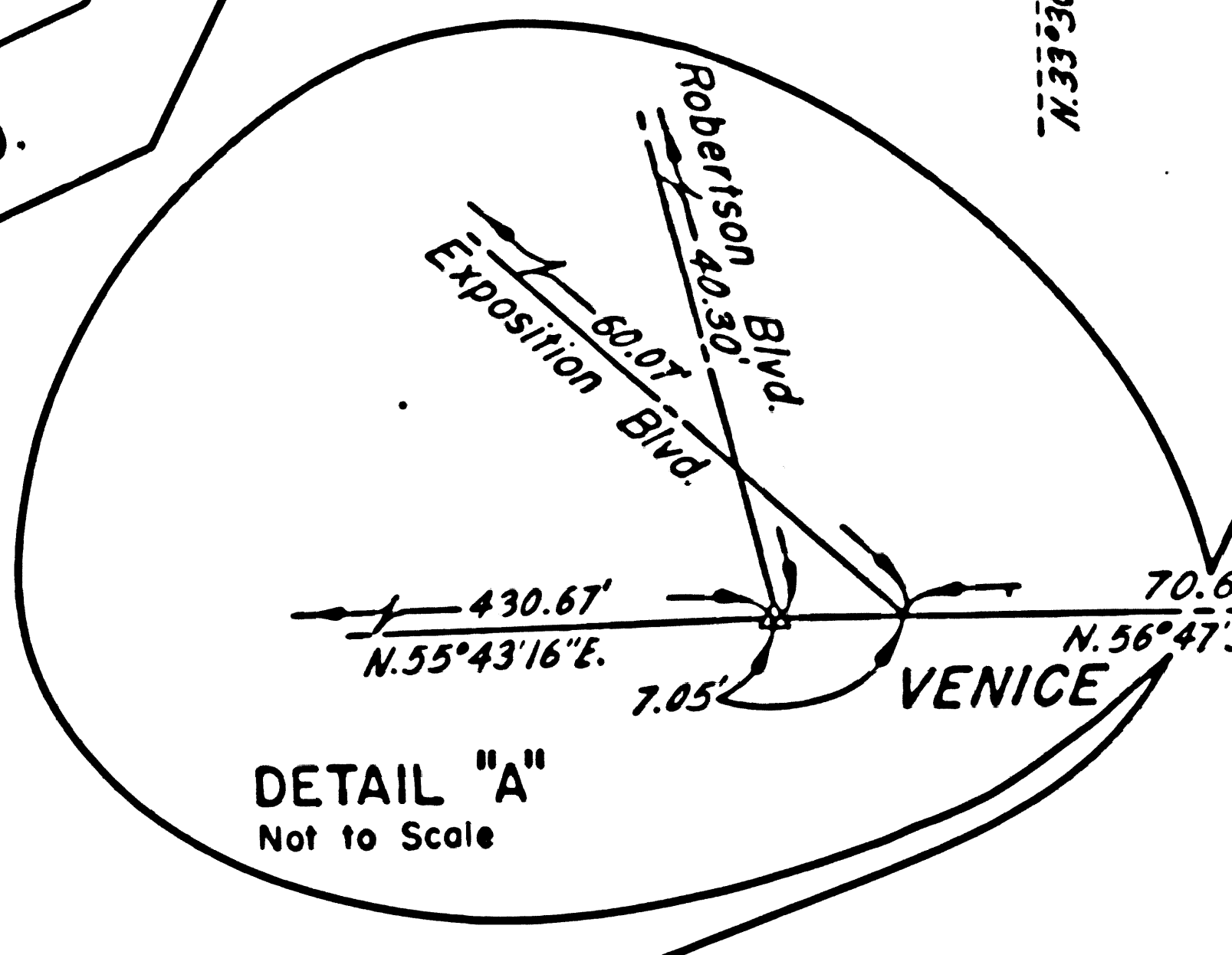
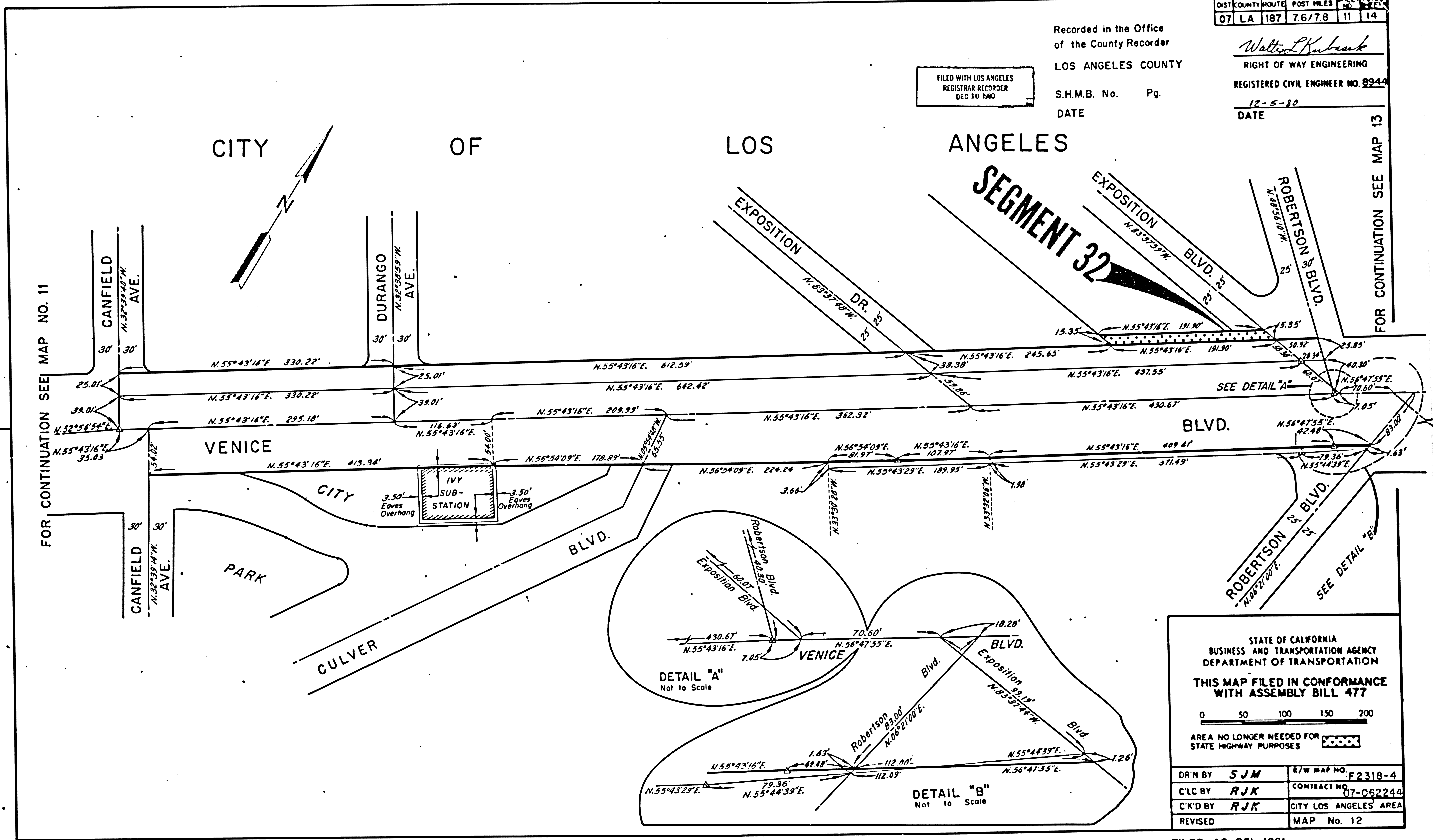
FILED WITH LOS ANGELES
REGISTRAR RECORDER
DEC 10 1930

CITY OF LOS ANGELES

SEGMENT 32

FOR CONTINUATION SEE MAP 13

FOR CONTINUATION SEE MAP NO. 11



STATE OF CALIFORNIA
BUSINESS AND TRANSPORTATION AGENCY
DEPARTMENT OF TRANSPORTATION

**THIS MAP FILED IN CONFORMANCE
WITH ASSEMBLY BILL 477**

0 50 100 150 200

AREA NO LONGER NEEDED FOR
STATE HIGHWAY PURPOSES

DR'N BY	SJM	R/W MAP NO.	F2318-4
C'LC BY	RJK	CONTRACT NO.	07-062244
C'K'D BY	RJK	CITY LOS ANGELES AREA	
REVISED		MAP No. 12	

FILED AS REL. 1021

STATE FEDERAL PROJECT NO.
CALIF.

DIST	COUNTY	ROUTE	POST MILES	SHEET NO.	TOTAL SHEETS
07	LA	187	7.8/8.1	12	14

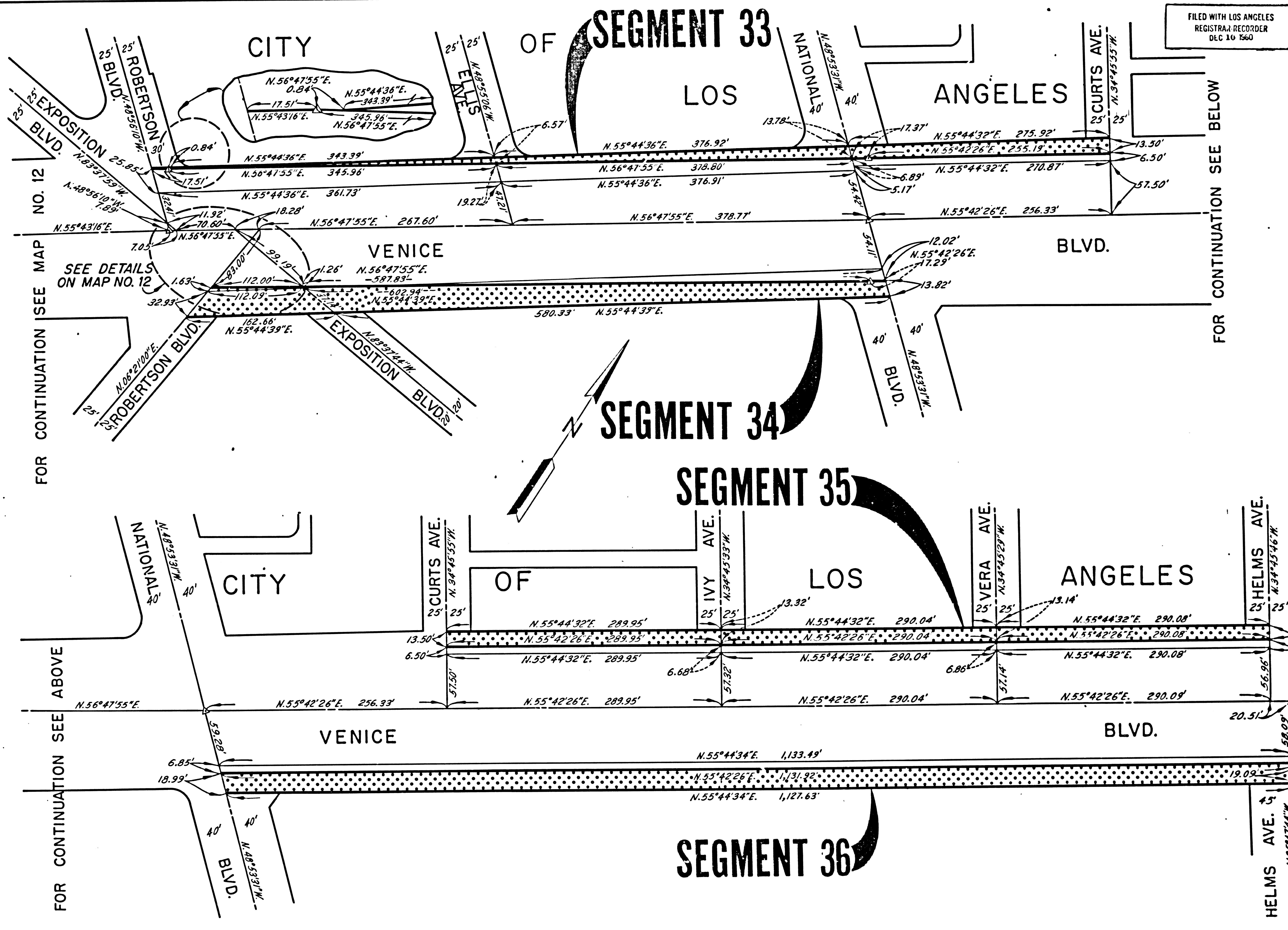
Walter L. Kurbank
RIGHT OF WAY ENGINEERING
REGISTERED CIVIL ENGINEER NO. 8944
12-5-80
DATE

FILED WITH LOS ANGELES
REGISTRAR RECORDER
DEC 10 1960

FOR CONTINUATION SEE BELOW

FOR CONTINUATION SEE MAP NO. 14

Recorded in the Office
of the County Recorder
LOS ANGELES COUNTY
S.H.M.B. No. Pg.
DATE



FOR CONTINUATION SEE MAP NO. 12

FOR CONTINUATION SEE ABOVE

STATE OF CALIFORNIA
BUSINESS AND TRANSPORTATION AGENCY
DEPARTMENT OF TRANSPORTATION
THIS MAP FILED IN CONFORMANCE
WITH ASSEMBLY BILL 477
0 50 100 150 200
AREA NO LONGER NEEDED FOR
STATE HIGHWAY PURPOSES

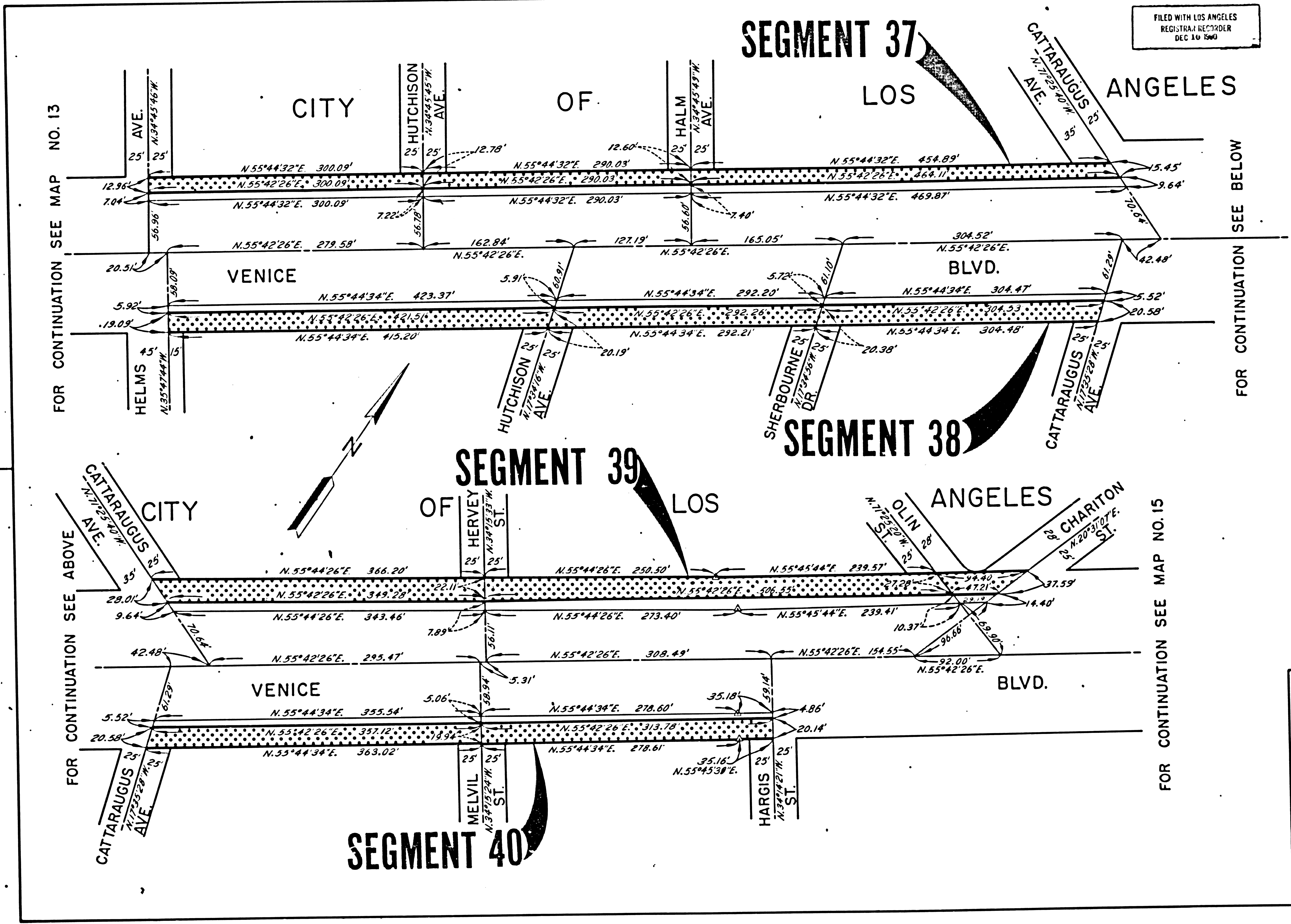
DR'N BY	SJM	R/W MAP NO.	F2318-5
C'LC BY	RJK	CONTRACT NO.	07-062244
C'K'D BY	RJK	CITY LOS ANGELES AREA	
REVISED		MAP No. 13	

FILED AS REL. 1021

STATE	FEDERAL PROJECT NO.		
CALIF.			
DIST. COUNTY	ROUTE	POST MILES	FILE NO.
07 LA	187	8.1/8.5	13 14

Watts & Kurbach
 RIGHT OF WAY ENGINEERING
 REGISTERED CIVIL ENGINEER NO. 8944
 12-5-80
 DATE

FILED WITH LOS ANGELES
 REGISTRAR RECORDER
 DEC 10 1980



FOR CONTINUATION SEE BELOW

FOR CONTINUATION SEE MAP NO. 13

FOR CONTINUATION SEE ABOVE

FOR CONTINUATION SEE MAP NO. 15

Recorded in the Office
 of the County Recorder
 LOS ANGELES COUNTY
 S.H.M.B. No. Pg.
 DATE

STATE OF CALIFORNIA
 BUSINESS AND TRANSPORTATION AGENCY
 DEPARTMENT OF TRANSPORTATION

**THIS MAP FILED IN CONFORMANCE
 WITH ASSEMBLY BILL 477**

0 50 100 150 200

AREA NO LONGER NEEDED FOR
 STATE HIGHWAY PURPOSES

DR'N BY	SJM	R/W MAP NO.	F 2318-6
C'LC BY	RJK	CONTRACT NO.	89-062244
C'K'D BY	RJK	CITY LOS ANGELES AREA	
REVISED		MAP No.	14

FILED AS REL. 1021

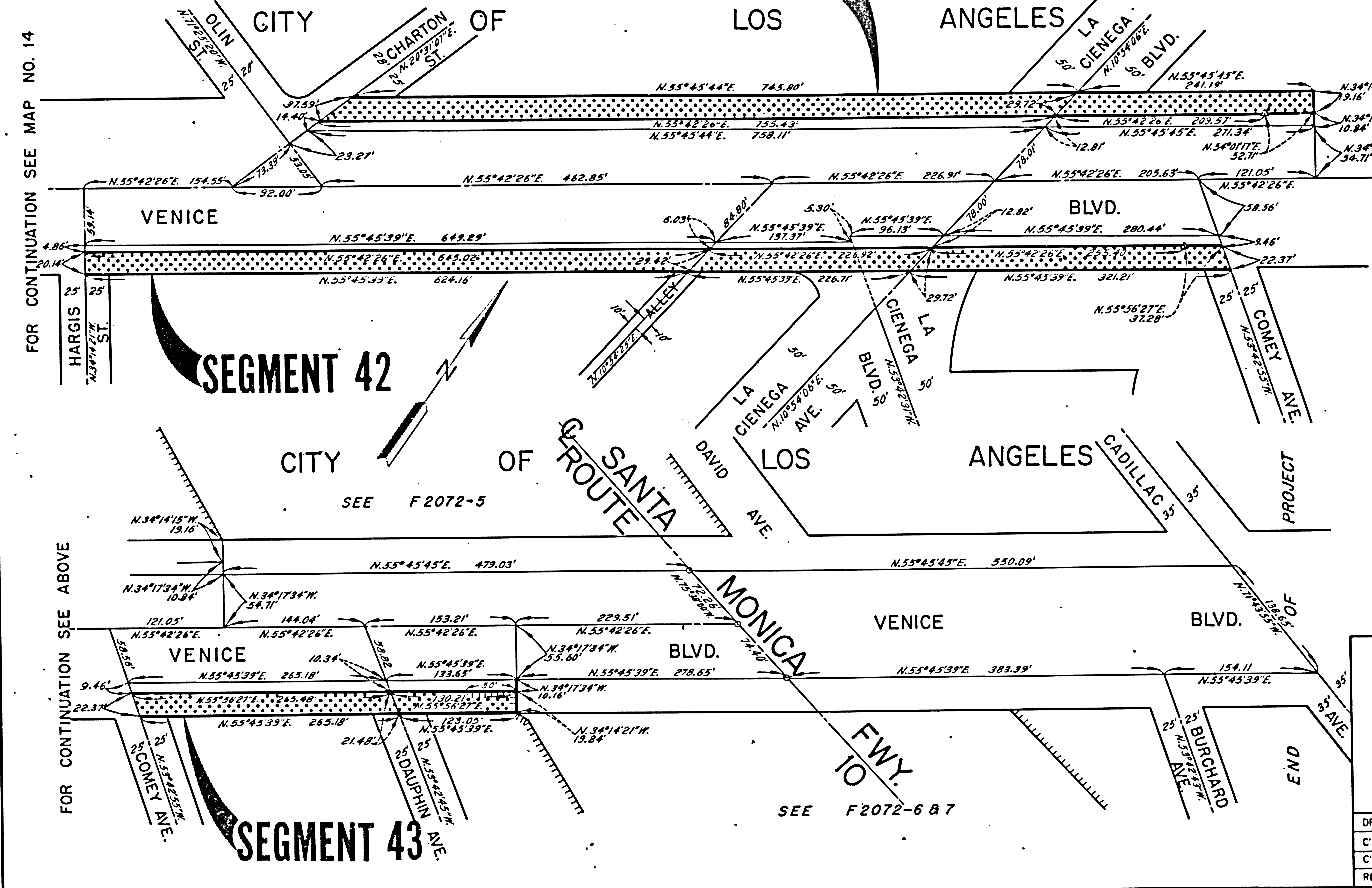
STATE	FEDERAL PROJECT NO.
CALIF.	
DIST COUNTY ROUTE	POST MILES
07 LA 187	8.5/8.9
SHEET NO.	TOTAL SHEETS
14	14

Walter L. Kuback
 RIGHT OF WAY ENGINEERING
 REGISTERED CIVIL ENGINEER NO. 8914

12-5-80
 DATE

SEGMENT 41

FILED WITH LOS ANGELES
 REGISTRAR RECORDER
 DEC 10 1980



FOR CONTINUATION SEE BELOW

Recorded in the Office
 of the County Recorder
 LOS ANGELES COUNTY
 S.H.M.B. No. Pg.
 DATE

STATE OF CALIFORNIA
 BUSINESS AND TRANSPORTATION AGENCY
 DEPARTMENT OF TRANSPORTATION

**THIS MAP FILED IN CONFORMANCE
 WITH ASSEMBLY BILL 477**

0 50 100 150 200

AREA NO LONGER NEEDED FOR
 STATE HIGHWAY PURPOSES

DR'N BY	SJM	R/W MAP NO.	F2318-7
C'LC BY	RJK	CONTRACT NO.	07-062244
C'K'D BY	RJK	CITY LOS ANGELES AREA	
REVISED		MAP No.	15