

STATE OF CALIFORNIA  
 BUSINESS AND TRANSPORTATION AGENCY  
 DEPARTMENT OF TRANSPORTATION

DIST	COUNTY	ROUTE	POST MILES	SHEET NO.	TOTAL SHEETS
07	LA	14	29.9-31.4	1	3

*Walter L. Kubasek*  
 RIGHT OF WAY ENGINEERING  
 REGISTERED CIVIL ENGINEER NO. 8944  
 9-7-82  
 DATE

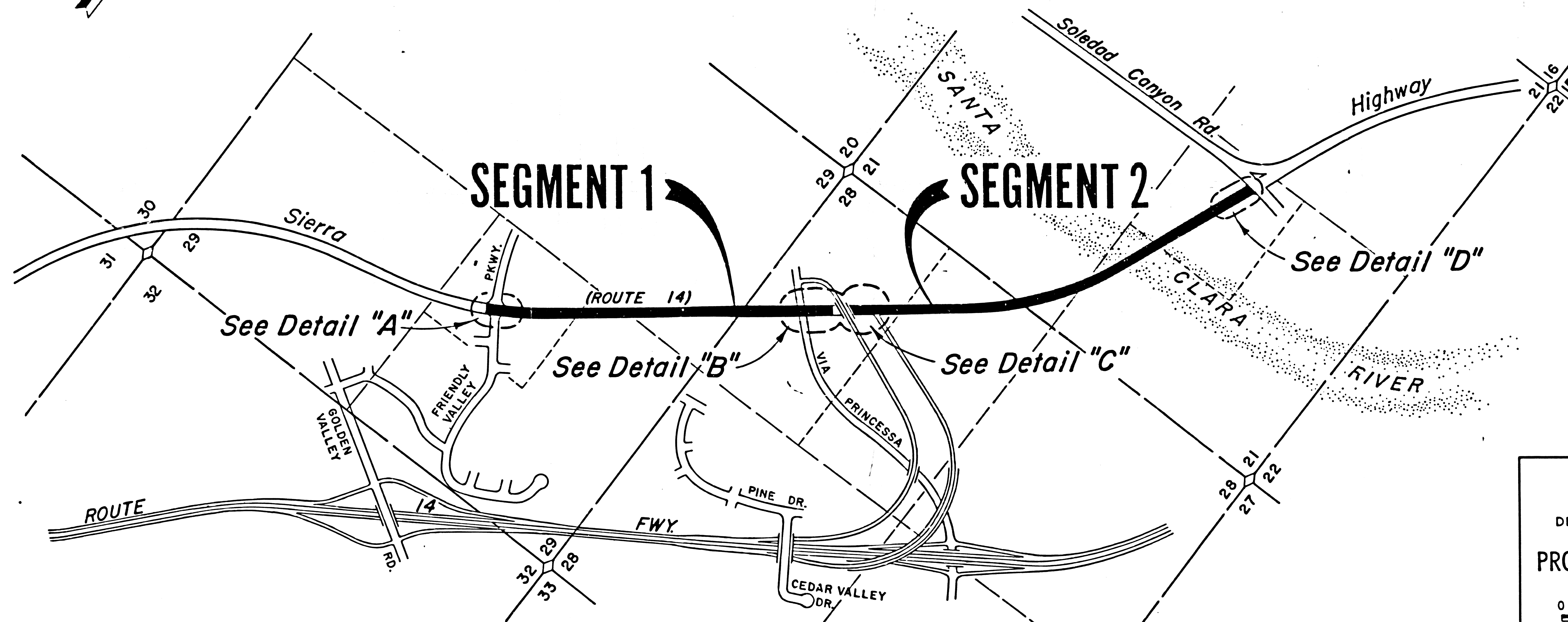
Recorded in the Office  
 of the County Recorder  
 LOS ANGELES COUNTY

S.H.M.B. No. 17 Pg. 32

92 100341  
 92-122587

FILED  
 AT REQUEST OF  
 DEPT OF PUBLIC WORKS  
 DEC 8 1982  
 21 MIN 2 P.M.  
 PAST  
 IN BOOK 17  
 AT PAGE 32  
 OF STATE HIGHWAY MAPS  
 LOS ANGELES COUNTY, CA.  
 County Recorder  
*Carb. Rodriguez*  
 Date 12/8/82

RIGHT OF WAY MAPS OF  
 STATE HIGHWAY  
 In The County of Los Angeles along Sierra Highway (Rte 14)  
 Between Friendly Valley Parkway and Soledad Canyon Road



LOS ANGELES COUNTY

T.4N., R.15W., S.B.B. & M.

24

STATE OF CALIFORNIA  
 BUSINESS AND TRANSPORTATION AGENCY  
 DEPARTMENT OF TRANSPORTATION

**PROPOSED RELINQUISHMENT**

0 600 1200 1800 2400

AREA TO BE RELINQUISHED

DR'N BY <i>M.S.</i>	R/W MAP NO. <i>R365-3</i>
C'LC BY <i>J.C.</i>	CONTRACT NO. <i>035624</i>
C'K'D BY <i>R.W.P.</i>	REL- <b>850</b>
REVISED <i>9-2-82</i>	

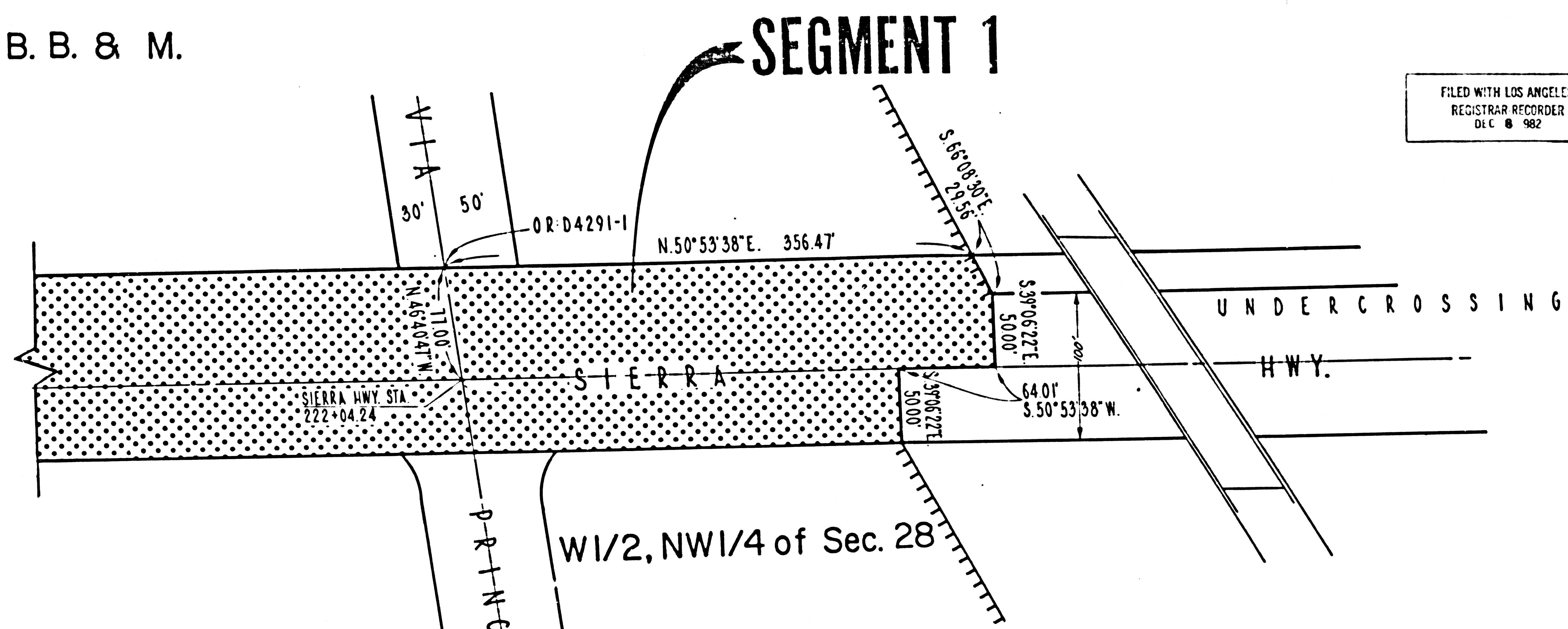
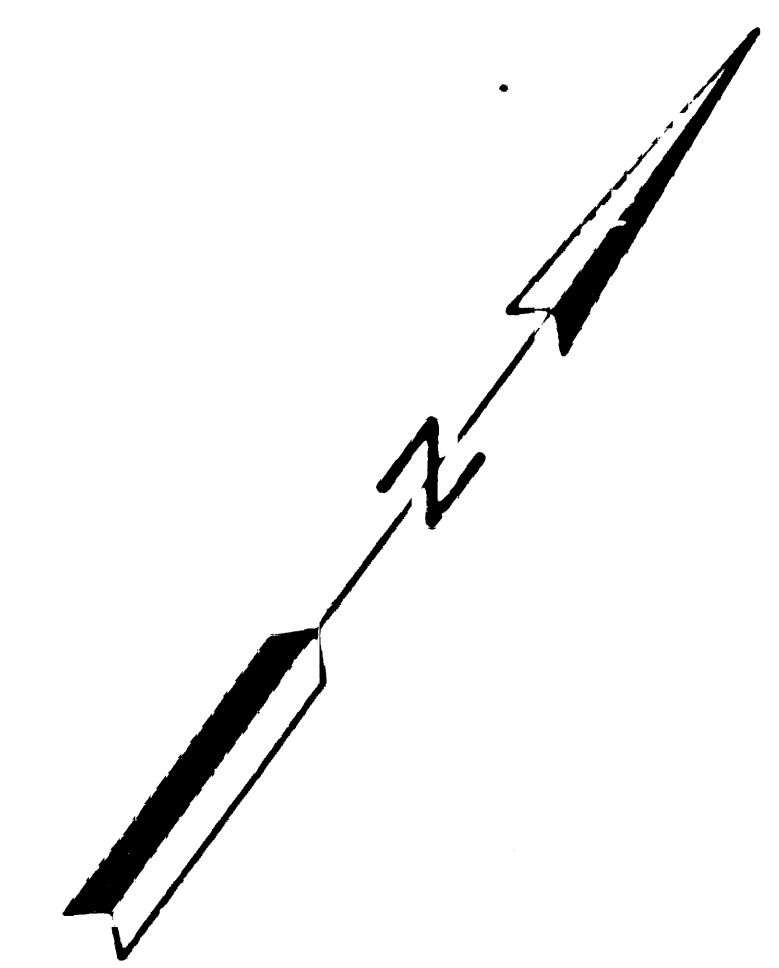
POST MILES	SHEET NO.	TOTAL SHEETS
29.9-31.4	2	3

LOS ANGELES COUNTY  
T.4N., R.15 W., S.B.B. & M.

*Walter L. Kuback*  
SENIOR TRANSPORTATION ENGINEER  
RIGHT OF WAY ENGINEERING  
REGISTERED CIVIL ENGINEER NO. 8944  
9-7-82

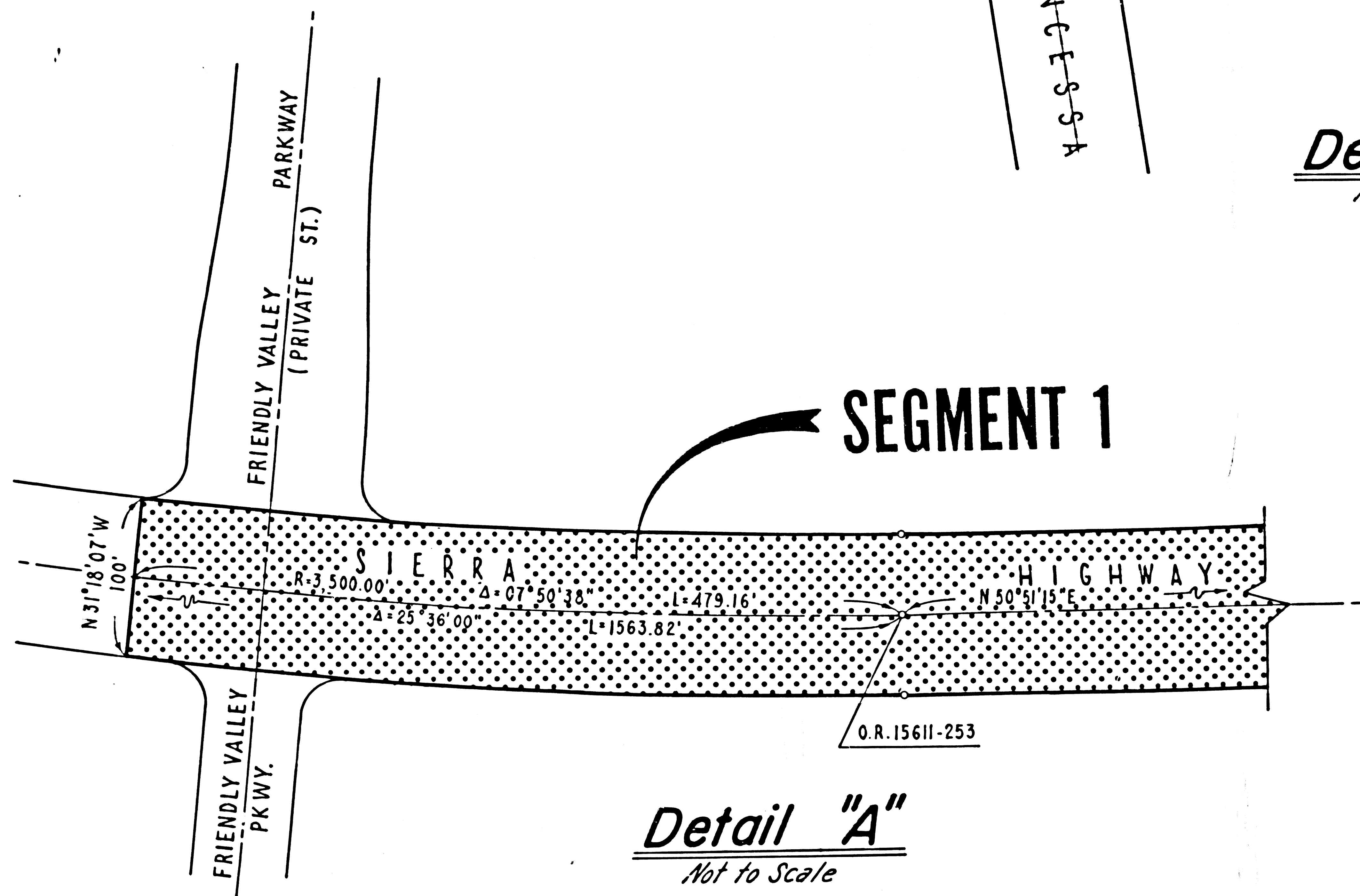
FILED WITH LOS ANGELES  
REGISTRAR RECORDER  
DLC 982

DATE  
Recorded in the Office  
of the County Recorder  
LOS ANGELES COUNTY  
S.H.M.B. No. 17 Pg. 33  
DATE



W1/2, NW1/4 of Sec. 28

**Detail "B"**  
*Not to Scale*



NW1/4 of  
SE 1/4 of  
Sec. 29

**Detail "A"**  
*Not to Scale*

STATE OF CALIFORNIA  
BUSINESS AND TRANSPORTATION AGENCY  
DEPARTMENT OF TRANSPORTATION

**PROPOSED RELINQUISHMENT**

0 50 100 150 200

AREA TO BE RELINQUISHED [Dotted Pattern]  
ACCESS PROHIBITED [Hatched Pattern]

DRN BY <i>M.S.</i>	R/W MAP NO. <i>P-365-3</i>
CLC BY <i>J.C.</i>	CONTRACT NO. <i>035624</i>
CK'D BY <i>R.W.P.</i>	<b>REL-850</b>
REVISED <i>7-31-81</i>	

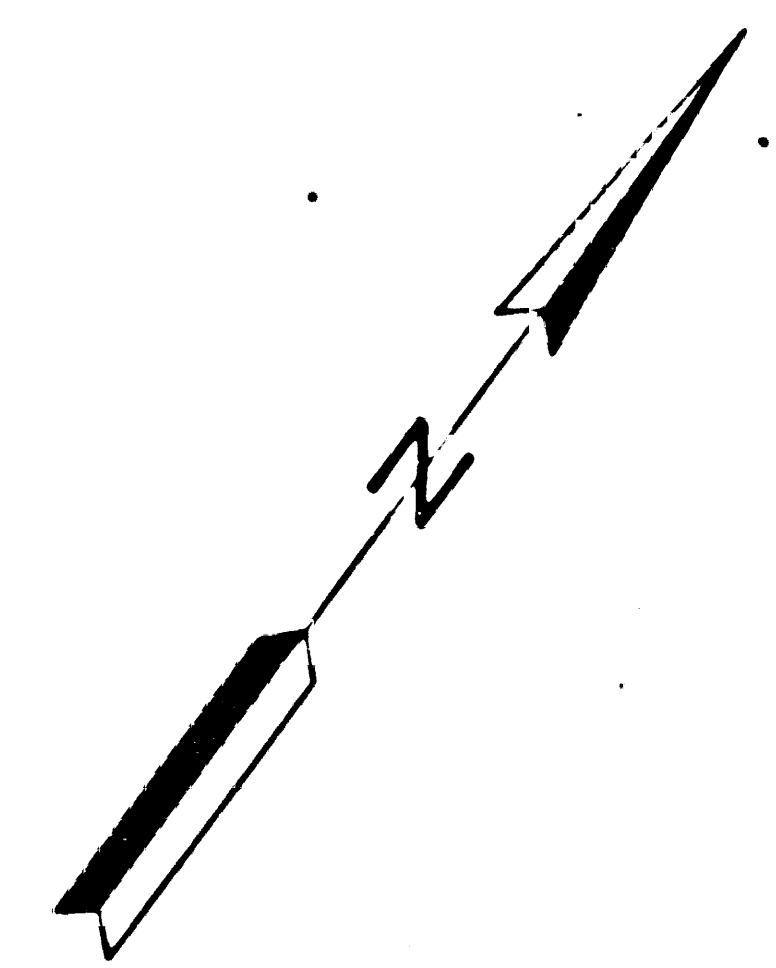
DIST	COUNTY	ROUTE	POST MILES	SHEET NO.	TOTAL SHEETS
07	L.A.	14	29.9-31	3	3

LOS ANGELES COUNTY  
T.4N., R.15 W., S.B.B. & M.

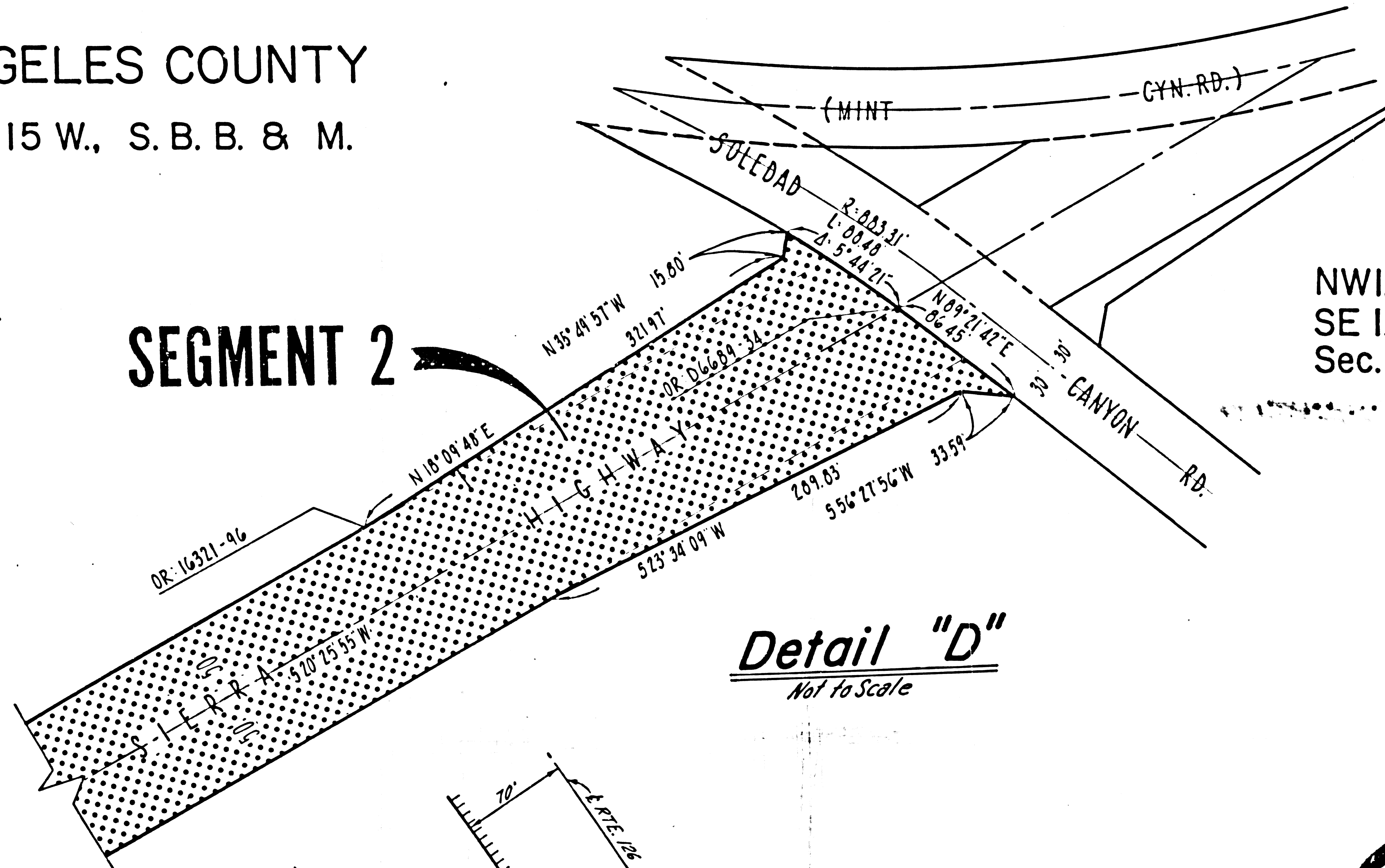
FILED WITH LOS ANGELES  
REGISTER RECORDER  
D.V. 8 982

*Walter L. Kuback*  
SENIOR ENGINEER,  
RIGHT OF WAY ENGINEERING  
REGISTERED CIVIL ENGINEER NO. 8944  
9-7-82  
DATE

Recorded in the Office  
of the County Recorder  
LOS ANGELES COUNTY  
S.H.M.B. No. 17 Pg. 54



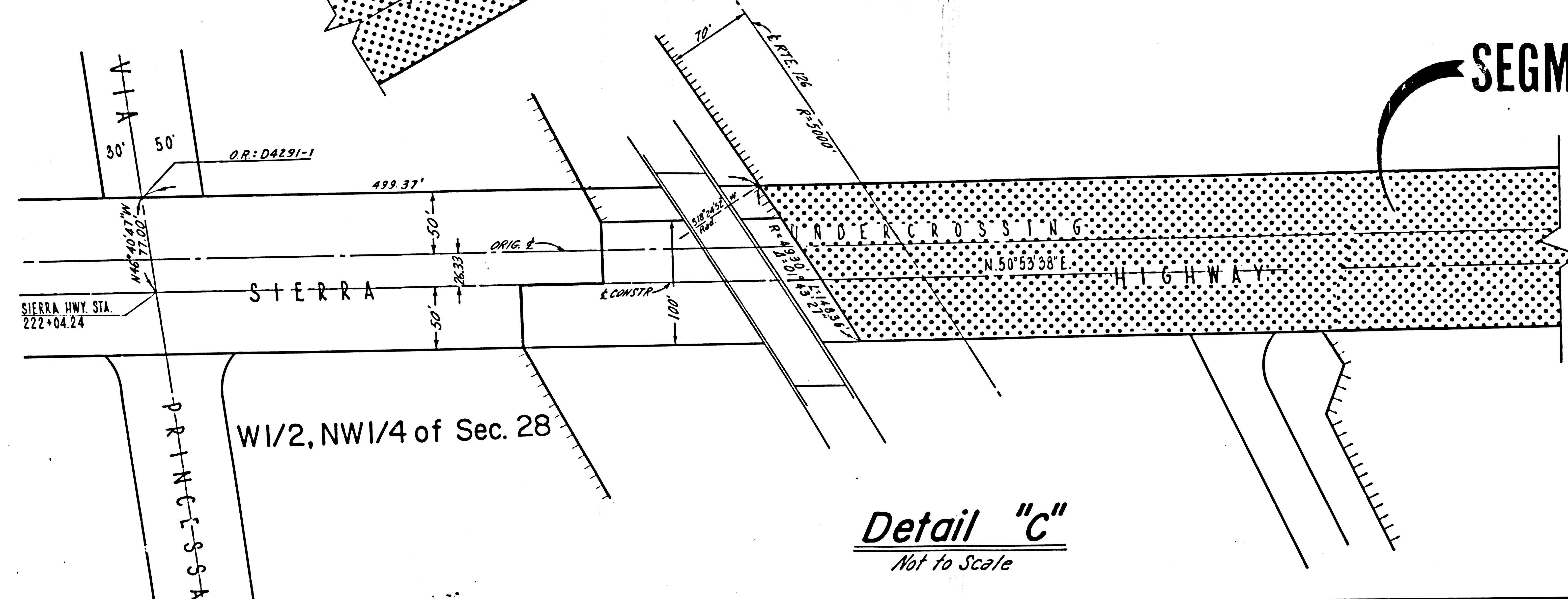
**SEGMENT 2**



NW1/4 of  
SE 1/4 of  
Sec. 21

**Detail "D"**  
*Not to Scale*

**SEGMENT 2**



W1/2, NW1/4 of Sec. 28

**Detail "C"**  
*Not to Scale*

STATE OF CALIFORNIA  
BUSINESS AND TRANSPORTATION AGENCY  
DEPARTMENT OF TRANSPORTATION

**PROPOSED RELINQUISHMENT**

0 50 100 150 200

AREA TO BE RELINQUISHED [Dotted Pattern]  
ACCESS PROHIBITED [Hatched Pattern]

DR'N BY	M.S.	R/W MAP NO.	24653 F10-7-B
C'LC BY	J.C.	CONTRACT NO.	035824
C'K'D BY	R.W.P.	REL-	850
REVISED	9-2-82		