

STATE OF CALIFORNIA  
BUSINESS AND TRANSPORTATION AGENCY  
**DEPARTMENT OF TRANSPORTATION**

DATE	COUNTY	ROUTE	POST MILES	SHEET NO.	TOTAL SHEETS
07	LA	405/105	20.2/20.5	1	1

*J. M. Swasey*  
Professional Engineer  
August 1, 1996

**PROFESSIONAL LAND SURVEYOR**  
J. M. IWASAKI  
No. L 6802  
Exp. 9-30-96

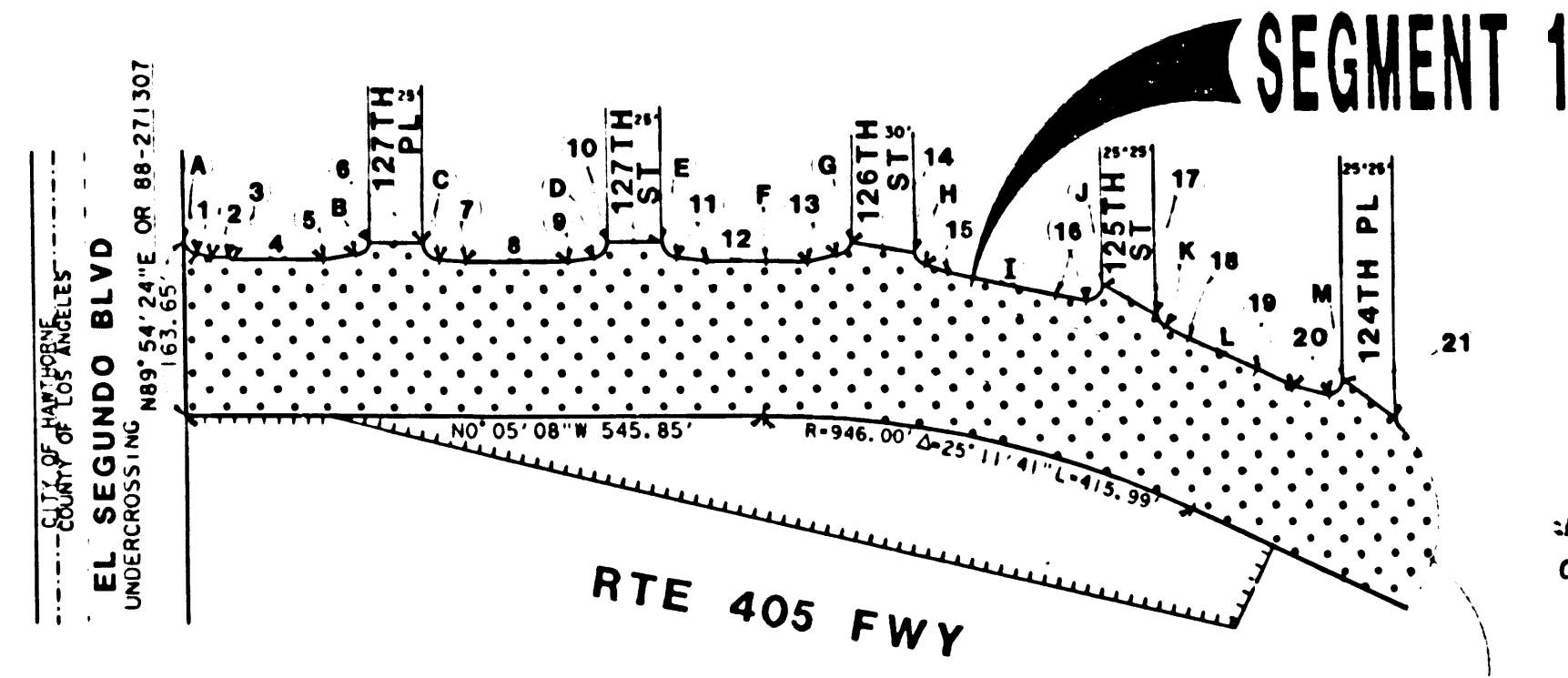
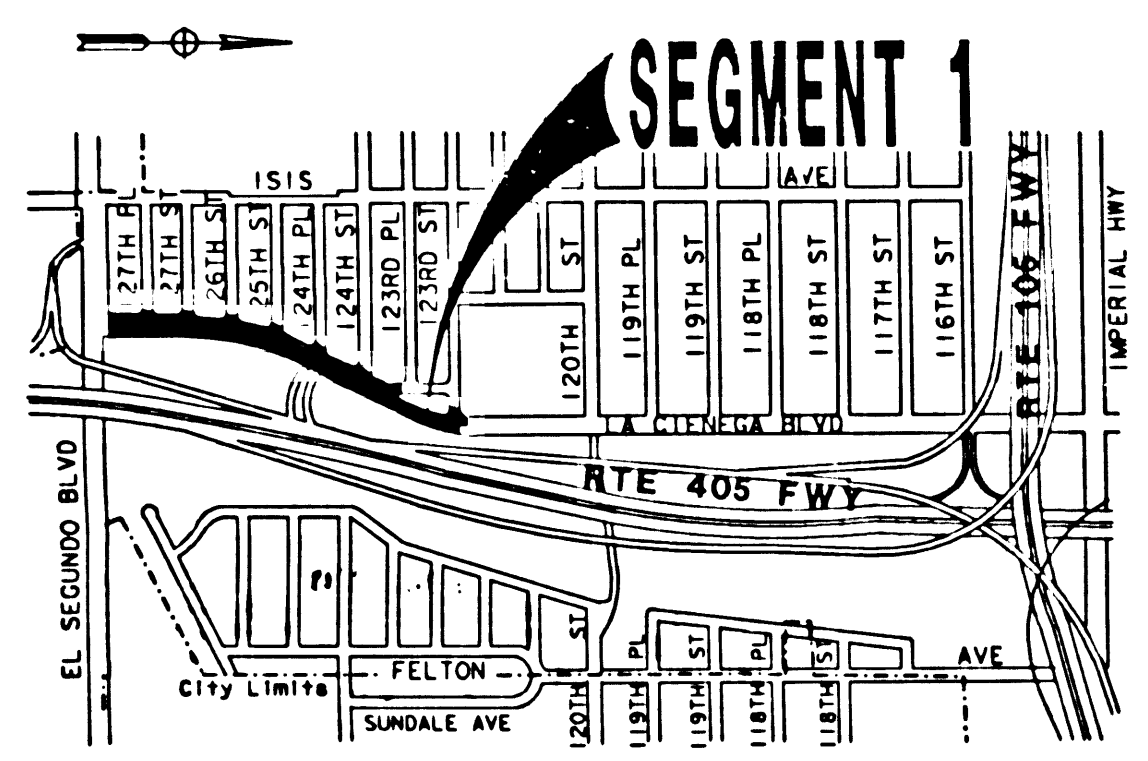
RIGHT OF WAY MAPS OF  
**STATE HIGHWAY**

IN THE COUNTY OF LOS ANGELES, ALONG ROUTE 405 FREEWAY  
BETWEEN EL SEGUNDO BLVD AND 123RD STREET

(IN COMPLIANCE WITH SECTION 128 & 129  
OF THE STREET AND HIGHWAY CODE)

FILED FOR RECORD IN THE OFFICE OF COUNTY  
RECORDER OF LOS ANGELES COUNTY

S.H.M.B. NO. PG.  
DATE



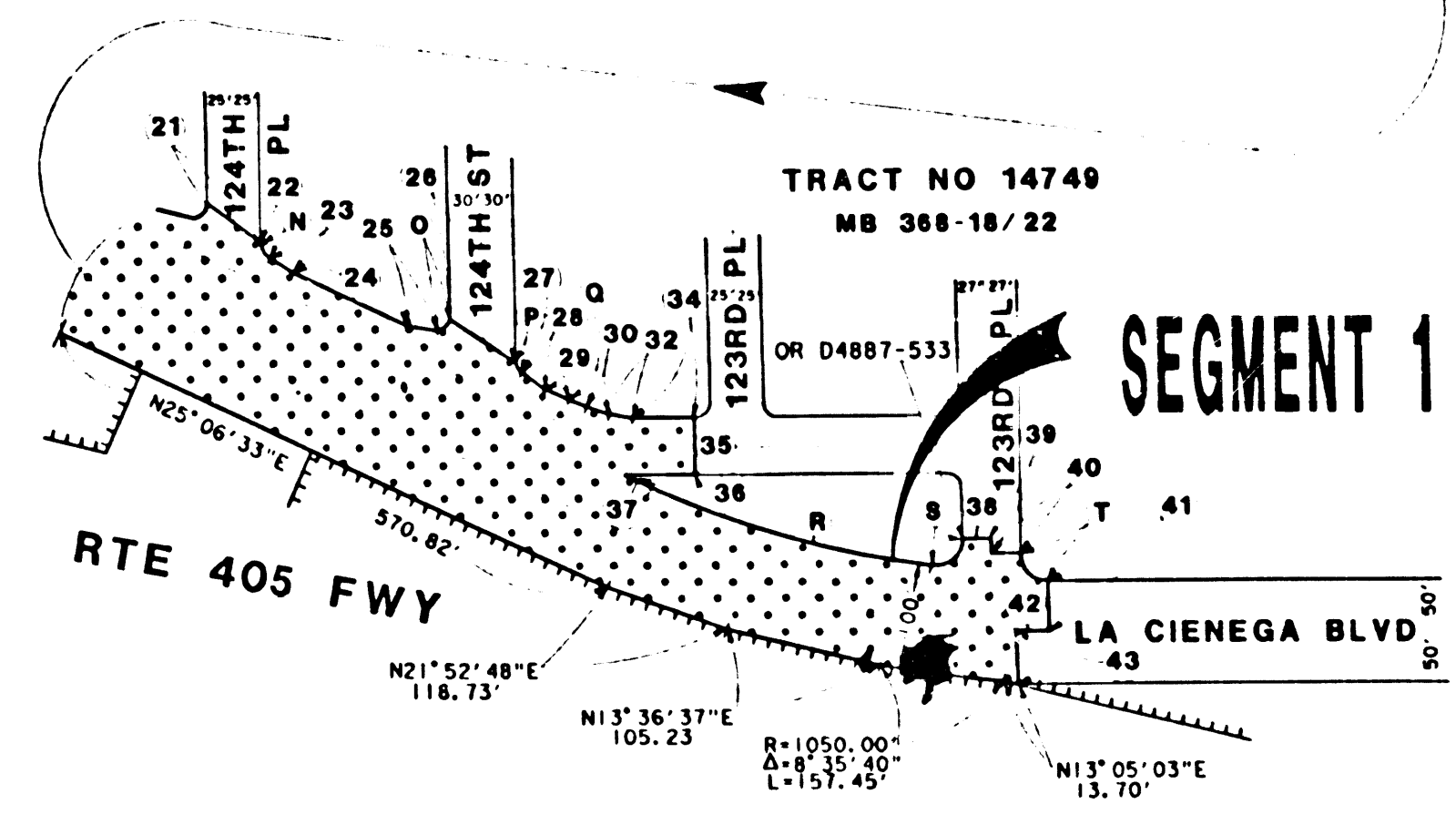
FILED  
AT REQUEST OF  
DEPT OF PUBLIC WORKS  
1 12:00 PM  
IN BOOK 19  
AT PAGE 76  
OF REAL PROPERTY MAPS  
LOS ANGELES COUNTY CA  
75 D'CAMB  
1996

AUG 13 1996

96-1301300

1	N08°54'18"E 12.80'	22	S89°54'18"W 1.74'
2	N00°05'08"W 14.00'	23	S35°23'19"W 25.21'
3	N35°26'55"E 6.02'	24	N25°06'33"E 116.92'
4	N00°05'08"W 91.43'	25	N10°22'01"E 25.54'
5	S11°31'02"E 27.75'	26	N33°53'10"E 72.35'
6	N00°05'50"W 50.08'	27	N25°06'33"E 0.59'
7	N10°07'41"E 25.40'	28	N39°48'18"E 25.64'
8	N00°05'08"W 96.25'	29	N25°06'33"E 23.97'
9	N10°23'25"W 25.16'	30	N19°04'25"E 22.77'
10	N00°09'28"W 50.15'	32	N07°03'22"E 22.65'
11	S10°07'06"W 25.40'	34	N00°05'53"W 59.16'
12	S00°05'08"E 53.89'	35	N89°54'07"E 54.00'
13	S11°52'24"E 25.60'	36	N00°05'53"W 65.56'
14	N08°12'35"E 60.63'	37	N25°06'33"E 27.11'
15	N23°04'07"E 26.07'	38	N00°05'53"W 27.00'
16	S04°40'00"W 24.80'	39	N89°54'55"E 12.89'
17	N27°39'55"E 56.58'	40	N00°05'53"W 27.00'
18	N31°03'11"E 25.16'	41	N89°54'07"E 50.00'
19	S25°06'33"W 37.79'	42	N00°05'53"W 32.05'
20	S14°49'14"W 25.20'	43	N89°54'07"E 50.00'
21	N42°20'50"E 67.72'		

	R	Δ	L
A	13.00'	83°28'42"	18.94'
B	13.00'	83°26'05"	18.93'
C	15.00'	84°16'55"	22.06'
D	15.00'	84°07'26"	22.02'
E	15.00'	84°15'52"	22.06'
F	091.50	02°16'13"	43.25'
G	13.00'	93°37'13"	21.24'
H	13.00'	84°30'57"	19.18'
I	091.50	05°11'17"	98.84'
J	15.00'	105°06'04"	27.52'
K	15.00'	69°38'30"	18.23'
L	091.50	03°42'35"	70.67'
M	15.00'	113°24'02"	29.69'
N	15.00'	66°59'18"	17.54'
O	13.00'	111°34'03"	25.31'
P	13.00'	64°48'06"	14.70'
Q	227.50'	04°25'41"	17.58'
R	950.00	16°22'56"	271.63'
S	27.00'	98°48'42"	46.56'
T	25.00'	90°00'48"	39.28'



STATE OF CALIFORNIA  
BUSINESS AND TRANSPORTATION AGENCY  
DEPARTMENT OF TRANSPORTATION

**PROPOSED RELINQUISHMENT**

AREA TO BE RELINQUISHED [Hatched Area]

ACCESS PROHIBITED [Dashed Line]

DR'N BY	MG	R/W MAP NO. F1922-2,3,4,5
C/LC BY	WR	CONTRACT NO.
C/K'D BY	AG	<b>REL 1108</b>
REVISED		