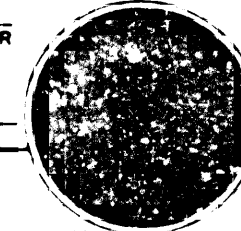


DIST.	COUNTY	ROUTE	POST MILES	SHEET NO.	TOTAL SHEETS
07	LA	105	2.4	1	1

*J. McSwain*  
 DISTRICT RIGHT OF WAY ENGINEER  
 PROFESSIONAL LAND SURVEYOR  
 4-29-96  
 APPROVAL DATE



STATE OF CALIFORNIA  
 BUSINESS AND TRANSPORTATION AGENCY  
 DEPARTMENT OF TRANSPORTATION

RIGHT OF WAY MAPS OF  
 STATE HIGHWAY

In the City of Hawthorne, along Rte. 105  
 At the N.W. Cor. of Imperial Hwy. and Inglewood Ave.

(In compliance with  
 Sections 128 & 129 of the  
 STREETS & HIGHWAYS Code)

Recorded in the Office  
 of the County Recorder  
 LOS ANGELES COUNTY

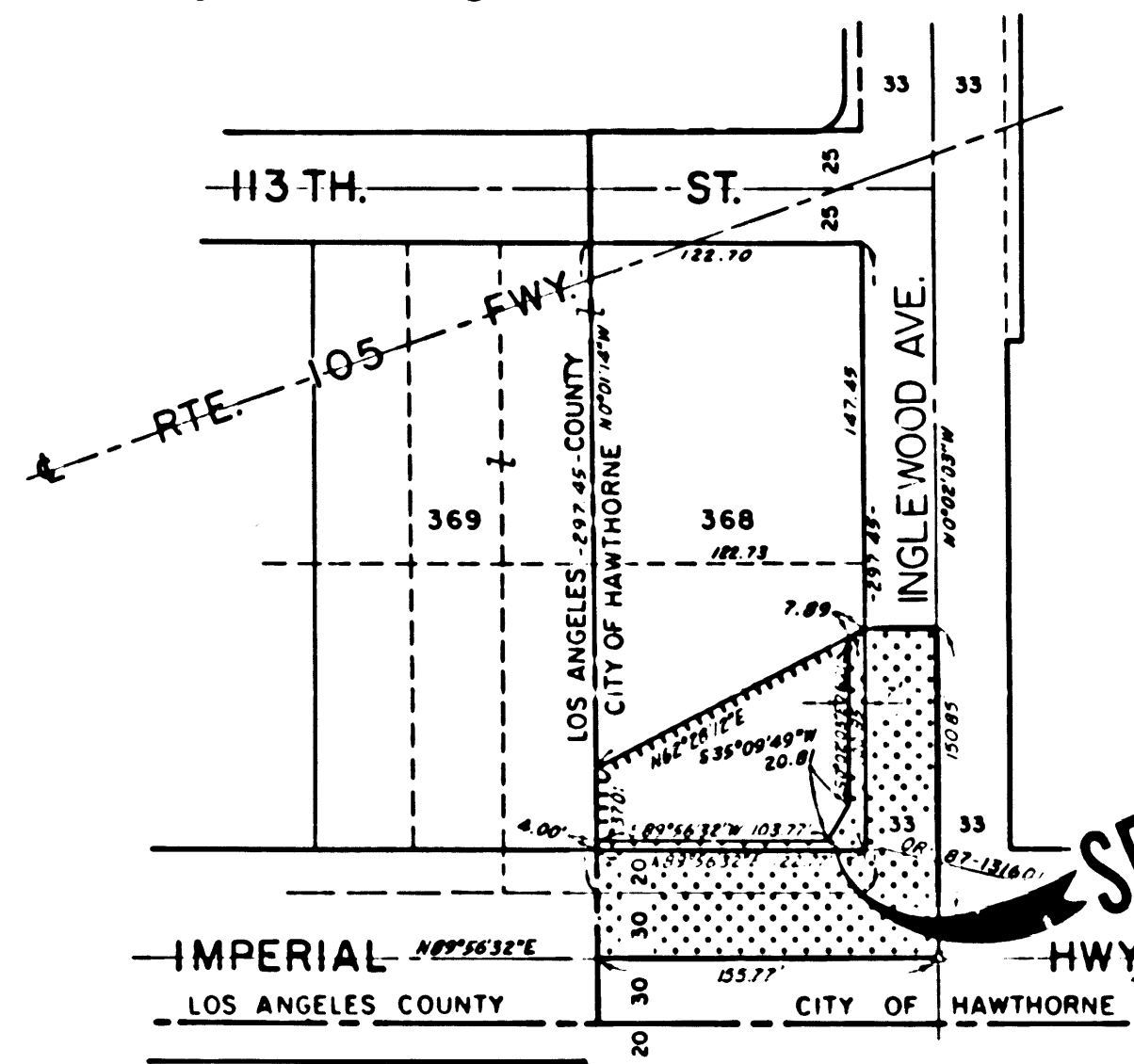
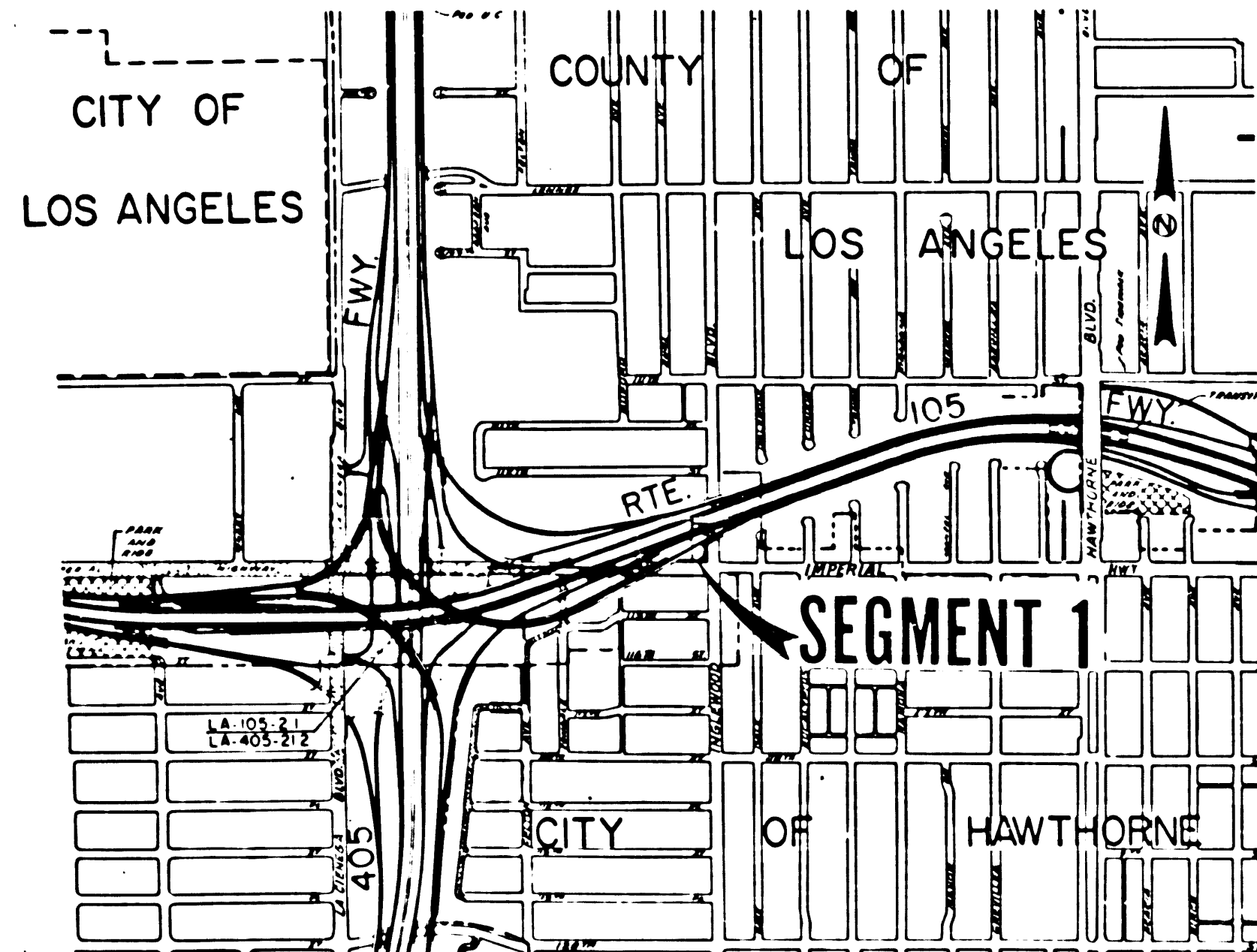
S.H.M.B. No. Pg.  
 DATE

AUG 13 1996

96-130172  
 96-130182

FILED  
 AT REQUEST OF  
 DEPT. OF PUBLIC WORKS

1 MIN  
 PART 12:00 PM  
 IN BOOK 19  
 AT PAGE 78  
 OF 97 SET, HIGHWAY MAPS  
 LOS ANGELES COUNTY, CA  
 Registered/Recorder/County Clerk  
 B. O'NEAL



**SEGMENT 1**

INTERSTATE



STATE OF CALIFORNIA  
 BUSINESS AND TRANSPORTATION AGENCY  
 DEPARTMENT OF TRANSPORTATION

**PROPOSED RELINQUISHMENT**

0 500 1000 1500 2000

AREA TO BE RELINQUISHED

DRN BY PS.	R/W MAP NO. F1157-2
CHK BY S.C.	CONTRACT NO. 050284
ENGR BY E. KURIHARA	REL-1161
REVISED	