

# CITY OF GARDENA

STATE	FEDERAL PROJECT NO.	DIST	COUNTY	ROUTE	POST MILES	SHEET NO.	TOTAL SHEETS
CALIF.	AC1-105-3 (1187)13	07	LA	91	4.71/6.01	1	2

*J. M. Iwasaki*  
PROFESSIONAL LAND SURVEYOR

May 14, 1997

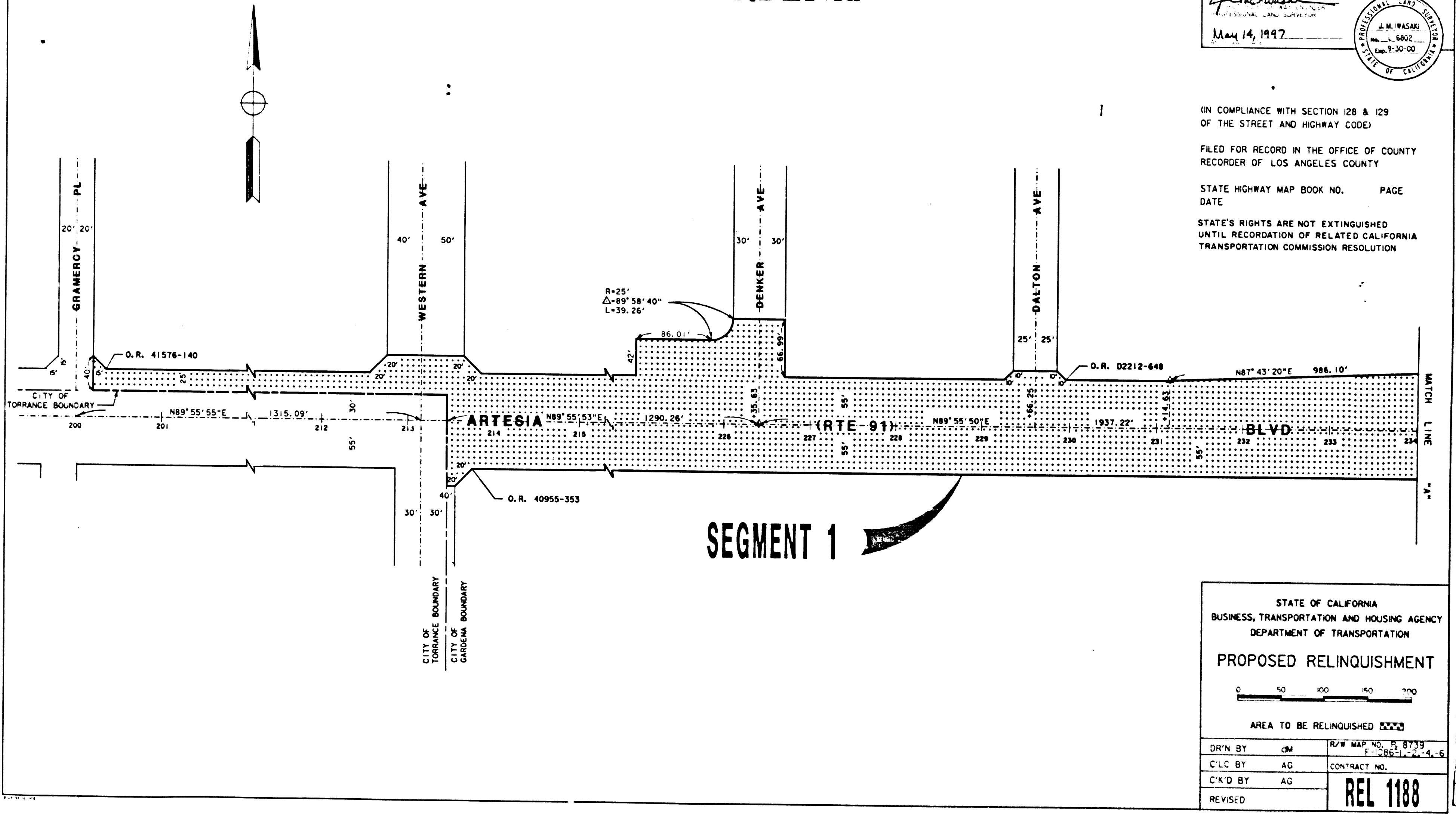
J. M. IWASAKI  
No. L 6802  
Exp. 9-30-00  
STATE OF CALIFORNIA

(IN COMPLIANCE WITH SECTION 128 & 129 OF THE STREET AND HIGHWAY CODE)

FILED FOR RECORD IN THE OFFICE OF COUNTY RECORDER OF LOS ANGELES COUNTY

STATE HIGHWAY MAP BOOK NO.      PAGE  
DATE

STATE'S RIGHTS ARE NOT EXTINGUISHED UNTIL RECORDATION OF RELATED CALIFORNIA TRANSPORTATION COMMISSION RESOLUTION



STATE OF CALIFORNIA  
BUSINESS, TRANSPORTATION AND HOUSING AGENCY  
DEPARTMENT OF TRANSPORTATION

**PROPOSED RELINQUISHMENT**

0    50    100    150    200

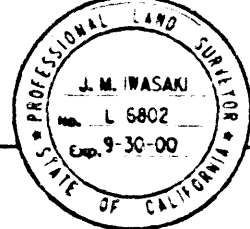
AREA TO BE RELINQUISHED

DR'N BY	CM	R/W MAP NO. P. 8139
C/LC BY	AG	F-1286-1-2-4-6
C/K'D BY	AG	CONTRACT NO.
REVISED		<b>REL 1188</b>

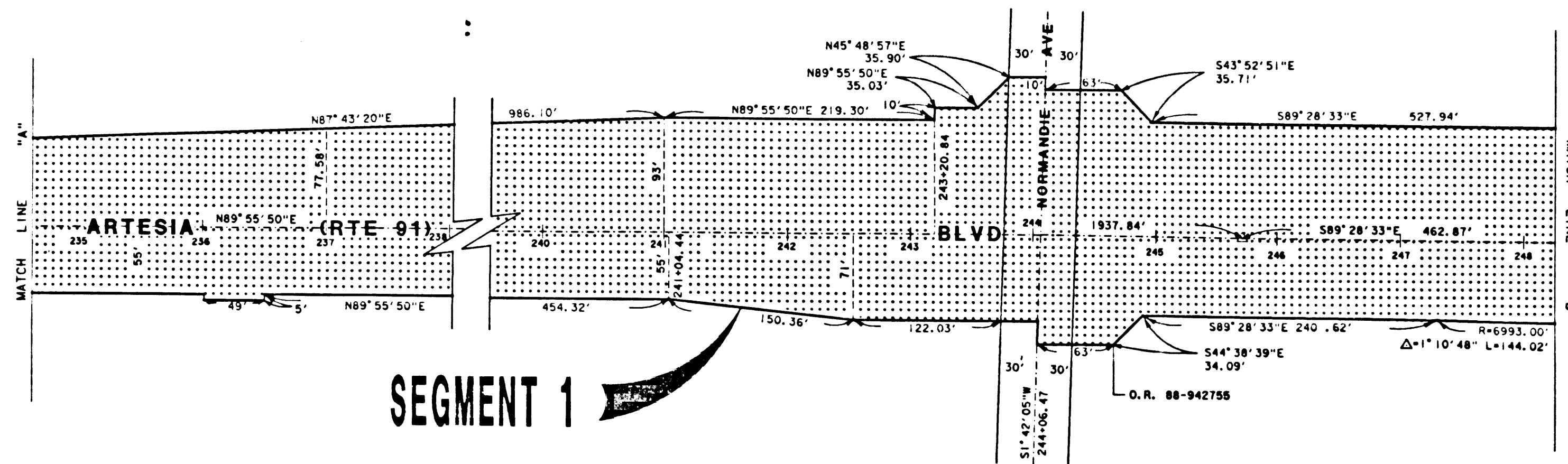
BOOK 19 PAGE 92

# CITY OF GARDENA

STATE	FEDERAL PROJECT NO.	DIST	COUNTY	ROUTE	POST MILES	SHEET NO.	TOTAL SHEETS
CALIF	AG-105-3 (87)13	07	LA	91	4.71/6.01	2	2



J. M. Wasaki  
 Professional Land Surveyor  
 May 14, 1997



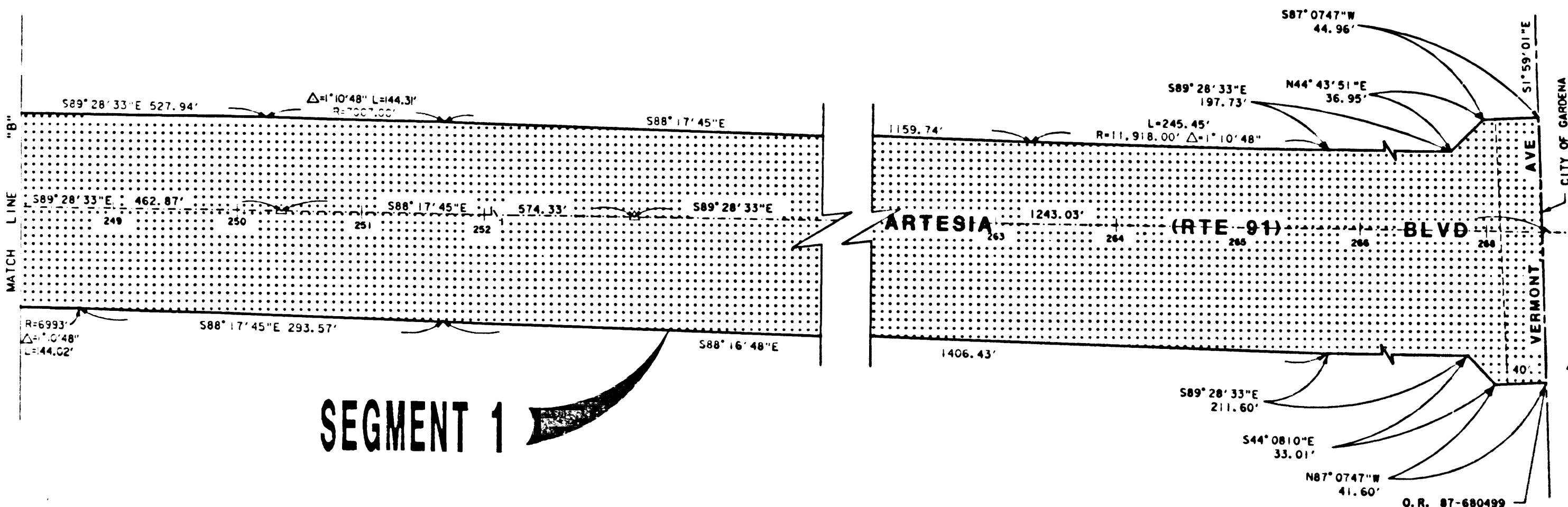
SEGMENT 1

(IN COMPLIANCE WITH SECTION 128 & 129 OF THE STREET AND HIGHWAY CODE)

FILED FOR RECORD IN THE OFFICE OF COUNTY RECORDER OF LOS ANGELES COUNTY

STATE HIGHWAY MAP BOOK NO.      PAGE  
DATE

STATE'S RIGHTS ARE NOT EXTINGUISHED UNTIL RECORDATION OF REPEATED CALIFORNIA TRANSPORTATION COMMISSION RESOLUTION




SEGMENT 1

STATE OF CALIFORNIA  
BUSINESS, TRANSPORTATION AND HOUSING AGENCY  
DEPARTMENT OF TRANSPORTATION

PROPOSED RELINQUISHMENT

0      50      100      150      200

AREA TO BE RELINQUISHED 

DR'N BY	CM	R/W MAP NO. P. 8739 F-1086-1-2-4-6
C'LC BY	AG	CONTRACT NO.
C'KD BY	AG	REL 1188
REVISED		

BUDN 19 PAGE 02