

STATE OF CALIFORNIA
BUSINESS AND TRANSPORTATION AGENCY
DEPARTMENT OF TRANSPORTATION

RIGHT OF WAY MAPS OF
STATE HIGHWAY

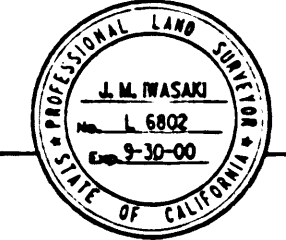
IN THE CITY OF EL SEGUNDO, ALONG ATWOOD WAY
BETWEEN NASH STREET AND DOUGLAS STREET

STATE	FEDERAL PROJECT NO.	DIST	COUNTY	ROUTE	POST MILES	SHEET NO.	TOTAL SHEETS
CALIF.	ACI-105-3 (187)13	07	LA	105	1.1	1	1

FILED
AT REQUEST OF
DEPT OF PUBLIC WORKS
OCT 23 1998
1 281 11 AM

IN BOOK 20
AT PAGE 2
OF STATE HIGHWAY MAPS
LOS ANGELES COUNTY, CA

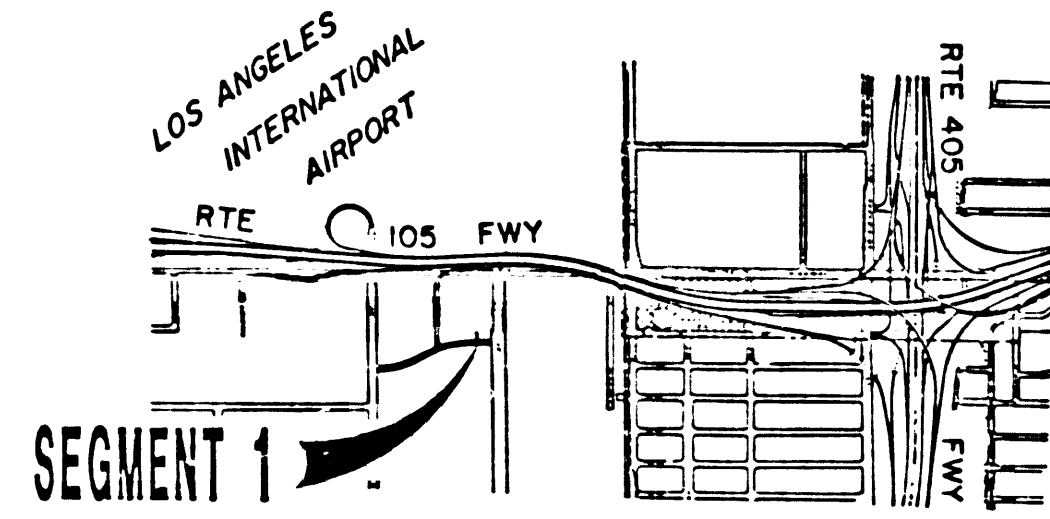
PROF. J. M. WASAKI
DISTRICT ENGINEER
PROFESSIONAL LAND SURVEYOR
APPROVAL DATE
MAY 1 1998



(IN COMPLIANCE WITH SECTION 128 & 129
OF THE STREET AND HIGHWAY CODE)

FILED FOR RECORD IN THE OFFICE OF COUNTY
RECORDER OF LOS ANGELES COUNTY

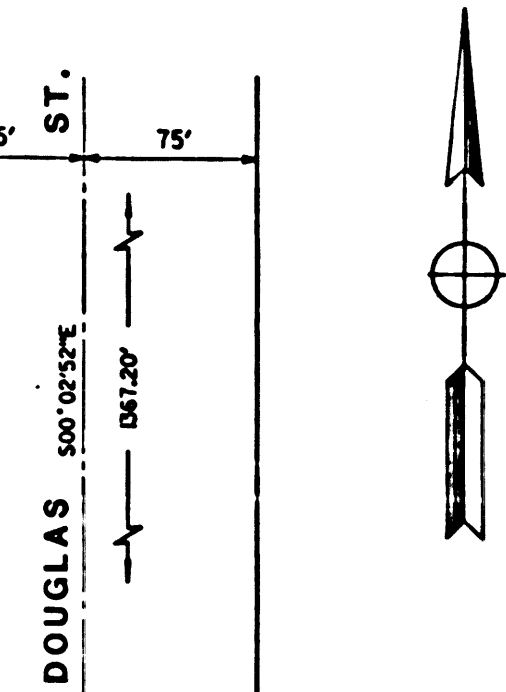
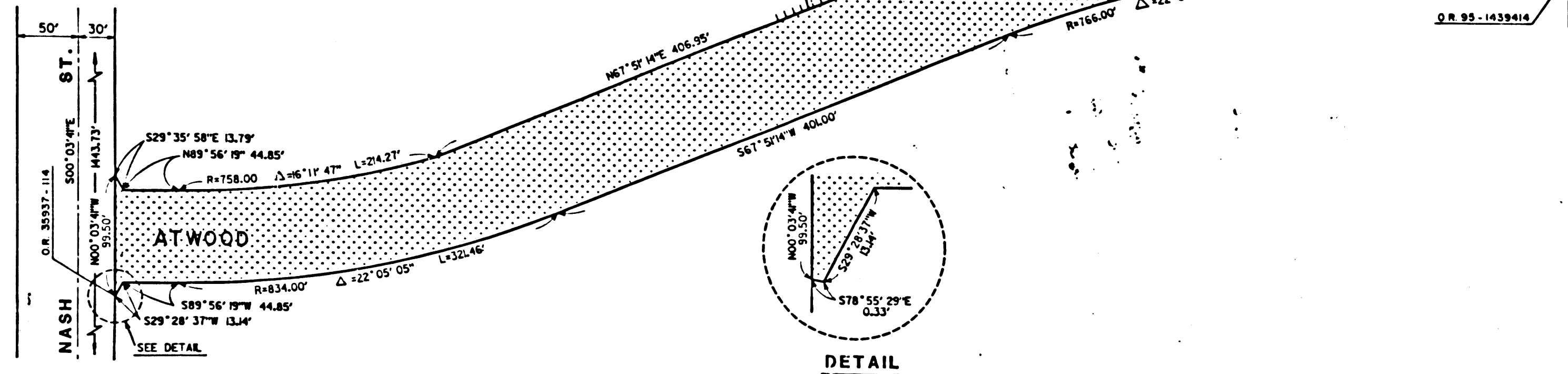
STATE HIGHWAY MAP BOOK NO. PAGE
DATE



SEGMENT 1

AREA TO BE RELINQUISHED
(NO SCALE)

SEGMENT 1



STATE'S RIGHTS ARE NOT EXTINGUISHED UNTIL
RECORDATION OF RELATED CALIFORNIA
TRANSPORTATION COMMISSION RESOLUTION

STATE OF CALIFORNIA
BUSINESS, TRANSPORTATION AND HOUSING AGENCY
DEPARTMENT OF TRANSPORTATION

PROPOSED RELINQUISHMENT

0 50 100 150 200

AREA TO BE RELINQUISHED
ACCESS PROHIBITED

DR'N BY	PD	R/W MAP NO.	F-1142-16
C'LC BY	WR	CONTRACT NO.	
C'K'D BY	AG		
REVISED			REL-1193

BOOK 20 PAGE 2