

BOOK 20 PAGE 3

FILED  
 AT LOS ANGELES  
 DEPT. OF TRANSPORTATION  
 DEC 09 1998  
 BY BOOK 20  
 AT PAGE 3  
 REGISTERED PROFESSIONAL LAND SURVEYOR  
 STATE OF CALIFORNIA

9/5

STATE OF CALIFORNIA  
 BUSINESS AND TRANSPORTATION AGENCY  
**DEPARTMENT OF TRANSPORTATION**

RIGHT OF WAY MAPS OF  
**STATE HIGHWAY**  
 IN THE CITY OF LONG BEACH, ALONG LAKEWOOD BOULEVARD  
 FROM PACIFIC COAST HIGHWAY (ROUTE 1) TO DEL AMO BOULEVARD

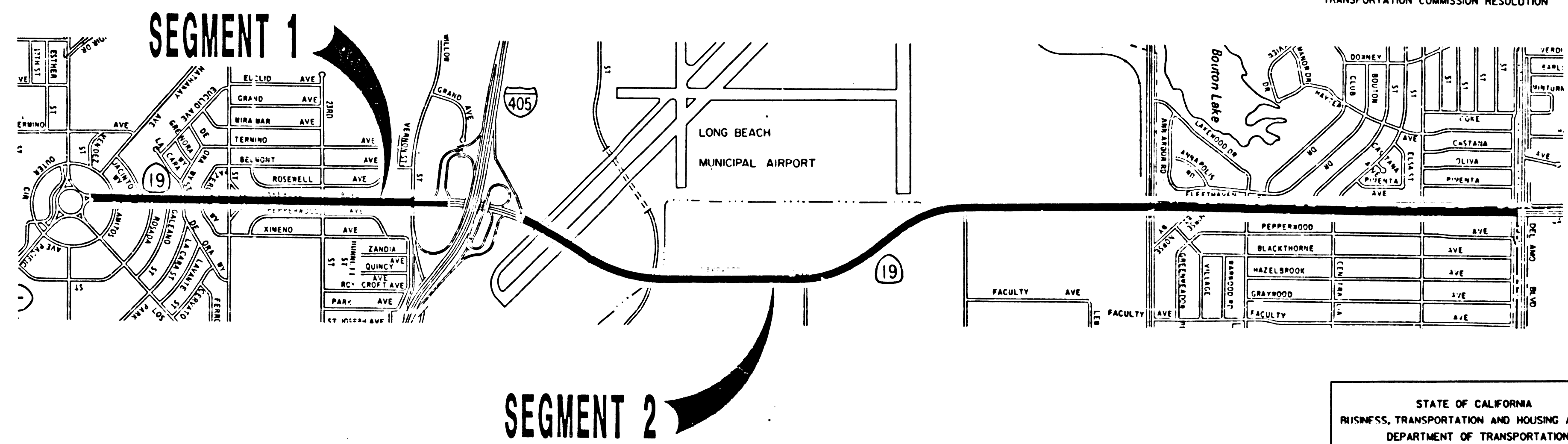
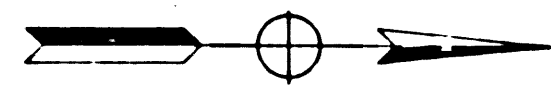
STATE	FEDERAL PROJECT NO.	DIST	COUNTY	ROUTE	POST MILES	SHEET NO.	TOTAL SHEETS
CALIF	AF-105-3 (187)13	07	LA	19	0.0/3.98	1	2

APPROVAL DATE: 12-9-98

PROFESSIONAL LAND SURVEYOR  
 J. M. IWASAKI  
 No. 6802  
 Exp. 9-30-00  
 STATE OF CALIFORNIA

(IN COMPLIANCE WITH SECTION 128 & 129  
 OF THE STREET AND HIGHWAY CODE)  
 FILED FOR RECORD IN THE OFFICE OF COUNTY  
 RECORDER OF LOS ANGELES COUNTY  
 STATE HIGHWAY MAP BOOK NO. PAGE  
 DATE

STATE'S RIGHTS ARE NOT EXTINGUISHED UNTIL  
 RECORDATION OF RELATED CALIFORNIA  
 TRANSPORTATION COMMISSION RESOLUTION



STATE OF CALIFORNIA  
 BUSINESS, TRANSPORTATION AND HOUSING AGENCY  
 DEPARTMENT OF TRANSPORTATION

**PROPOSED RELINQUISHMENT**

0 50 100 150 200

AREA TO BE RELINQUISHED [Symbol]  
 ACCESS PROHIBITED [Symbol]

DR'N BY	PD	R/W MAP NO. P2 2739-1, FIG 1
C'LC BY	AG	CONTRACT NO.
C'K'D BY	AG	
REVISED		

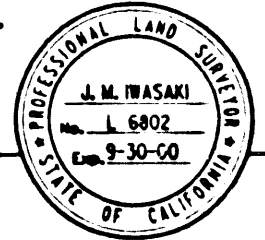
**REL-1194A**

BOOK 20 PAGE 4

# CITY OF LONG BEACH

STATE	FEDERAL PROJECT NO.	DIST	COUNTY	ROUTE	POST MILES	SHEET NO.	TOTAL SHEETS
CALIF.	ACI-105-3 (187)13	07	LA	19	0.0/3.98	2	2

*J. M. Wasaki*  
 STREET, HIGHWAY & R/W ENGINEER  
 PROFESSIONAL LAND SURVEYOR  
 12-9-98  
 APPROVAL DATE

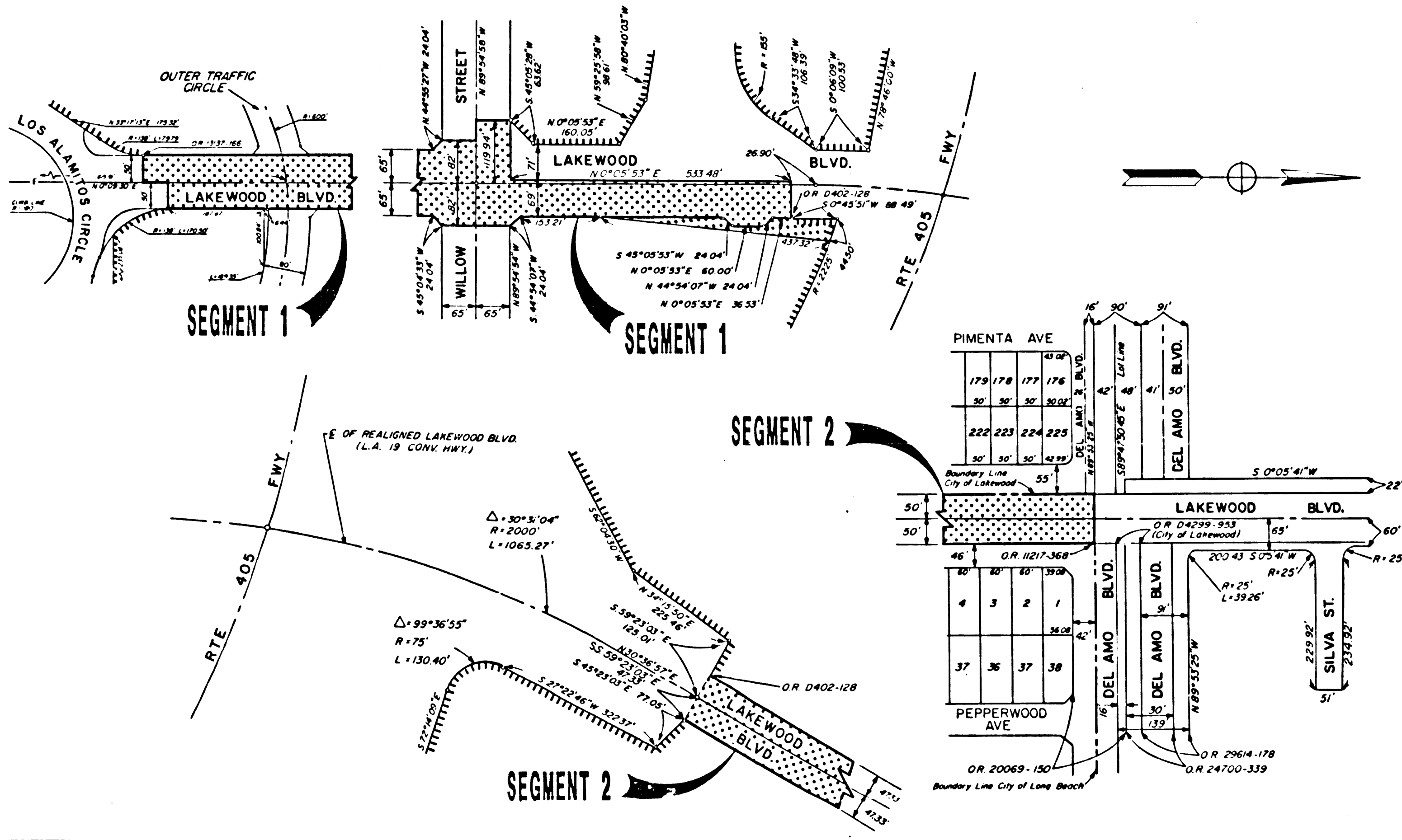


(IN COMPLIANCE WITH SECTION 128 & 129  
 OF THE STREET AND HIGHWAY CODE)

FILED FOR RECORD IN THE OFFICE OF COUNTY  
 RECORDER OF LOS ANGELES COUNTY

STATE HIGHWAY MAP BOOK NO. PAGE  
 DATE

STATE'S RIGHTS ARE NOT EXTINGUISHED UNTIL  
 RECORDATION OF RELATED CALIFORNIA  
 TRANSPORTATION COMMISSION RESOLUTION



STATE OF CALIFORNIA  
 BUSINESS, TRANSPORTATION AND HOUSING AGENCY  
 DEPARTMENT OF TRANSPORTATION

### PROPOSED RELINQUISHMENT

0 100 200 300 400

AREA TO BE RELINQUISHED ACCESS PROHIBITED

DR'N BY	PD	R/W MAP NO.	Pz 2739-1, F1901
C'LC BY	AG	CONTRACT NO.	
C'K'D BY	AG		
REVISED			

## REL-1194A