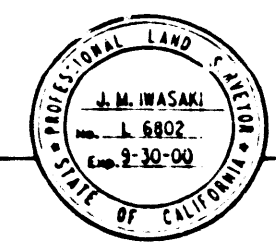


STATE OF CALIFORNIA
 BUSINESS AND TRANSPORTATION AGENCY
DEPARTMENT OF TRANSPORTATION

RIGHT OF WAY MAPS OF
STATE HIGHWAY
 IN THE CITY OF LONG BEACH, ALONG THE TERMINAL
 ISLAND FWY BETWEEN PACIFIC COAST HWY & WILLOW STREET.

STATE CALIF.	FEDERAL PROJECT NO.	DIST	COUNTY	ROUTE	POST MILES	SHEET NO.	TOTAL SHEETS
		07	L. A.	103U(47)	0.0/1.0	1	2

J. M. Wasaki
 DISTRICT PLANT OF ROAD ENGINEER
 TERMINAL ISLAND DISTRICT
 December 17, 1948
 EXPIRES: 2-30-50

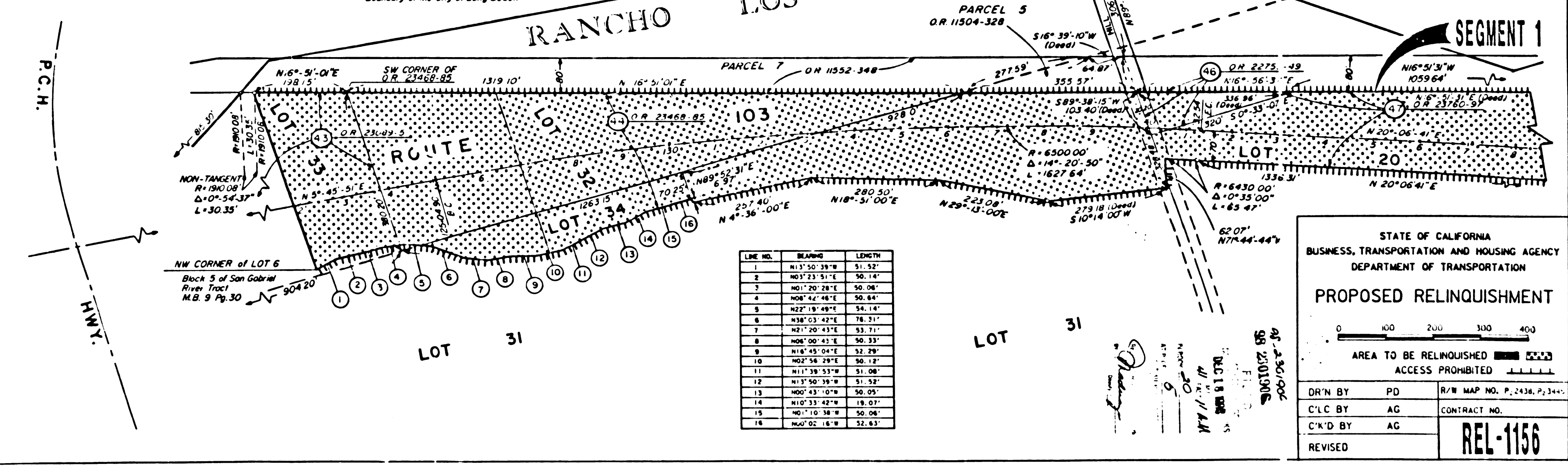
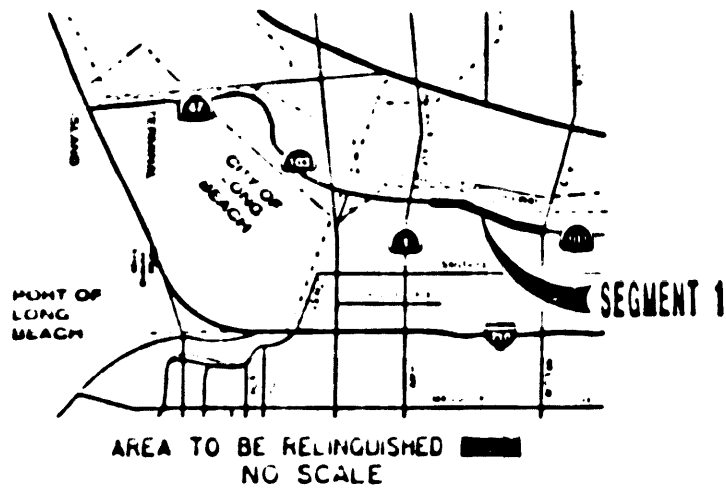


(IN COMPLIANCE WITH SECTION 128 & 129
 OF THE STREET AND HIGHWAY CODE)

FILED FOR RECORD IN THE OFFICE OF COUNTY
 RECORDER OF LOS ANGELES COUNTY

STATE HIGHWAY MAP BOOK NO. PAGE
 DATE

STATE'S RIGHTS ARE NOT EXTINGUISHED UNTIL
 RECORDATION OF RELATED CALIFORNIA
 TRANSPORTATION COMMISSION RESOLUTION



LINE NO.	BEARING	LENGTH
1	N13°50'39"W	51.52'
2	N03°23'51"E	50.14'
3	N01°20'28"E	50.08'
4	N08°42'48"E	50.64'
5	N22°19'49"E	54.14'
6	N38°03'42"E	74.31'
7	N21°20'43"E	53.71'
8	N06°00'43"E	50.33'
9	N16°45'04"E	52.29'
10	N02°56'29"E	50.12'
11	N11°39'53"W	51.08'
12	N13°50'39"W	51.52'
13	N00°43'10"W	50.05'
14	N10°33'42"W	19.07'
15	N01°10'38"W	50.08'
16	N60°02'16"W	52.43'

STATE OF CALIFORNIA
 BUSINESS, TRANSPORTATION AND HOUSING AGENCY
 DEPARTMENT OF TRANSPORTATION

PROPOSED RELINQUISHMENT

0 100 200 300 400

AREA TO BE RELINQUISHED [shaded area]
 ACCESS PROHIBITED [dashed line]

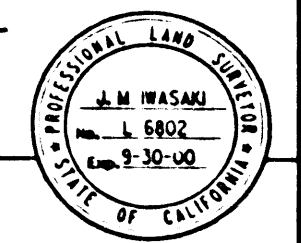
DR'N BY	PD	R/W MAP NO. P. 2438, P. 3442
C'L'C BY	AG	CONTRACT NO.
C'K'D BY	AG	
REVISED		REL-1156

92-2301906
 98-2301906
 DEC 18 1948
 J. M. WASAKI
 DISTRICT PLANT

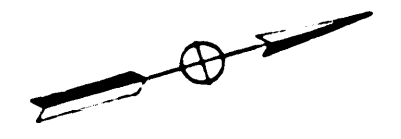
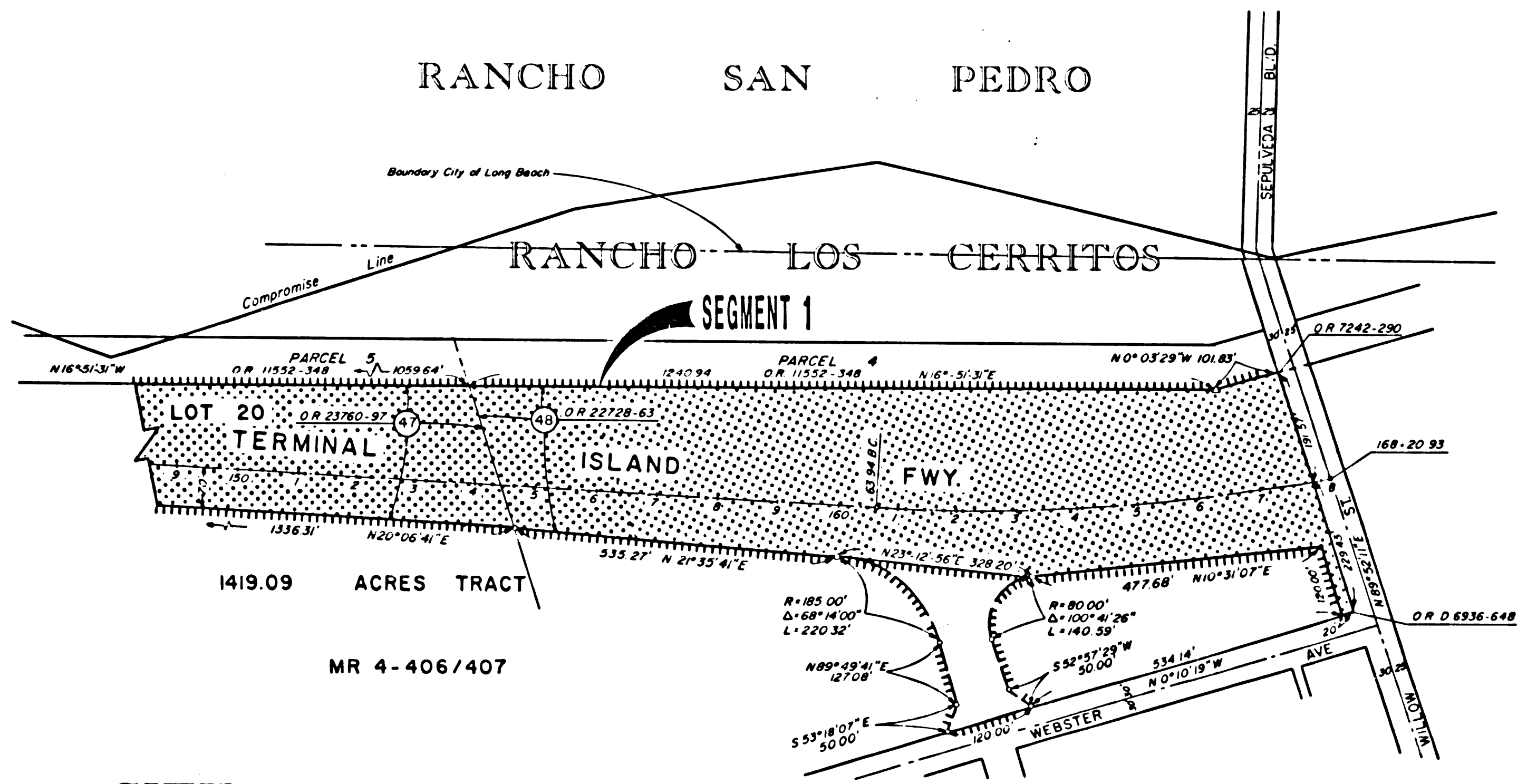
BOOK 20 PAGE 5

STATE	FEDERAL PROJECT NO.	DIST	COUNTY	ROUTE	POST MILES	SHEET NO.	TOTAL SHEETS
CALIF		07	L. A.	103U(47)	0.0/1.0	2	2

J.M. Masaki
 J.E. HOLT, RIGHT OF WAY ENGINEER
 PROFESSIONAL LAND SURVEYOR
 December 17, 1998
 APPROVAL DATE



(IN COMPLIANCE WITH SECTION 128 & 129
 OF THE STREET AND HIGHWAY CODE)
 FILED FOR RECORD IN THE OFFICE OF COUNTY
 RECORDER OF LOS ANGELES COUNTY
 STATE HIGHWAY MAP BOOK NO. PAGE
 DATE
 STATE'S RIGHTS ARE NOT EXTINGUISHED UNTIL
 RECORDATION OF RELATED CALIFORNIA
 TRANSPORTATION COMMISSION RESOLUTION



CITY OF LONG BEACH

STATE OF CALIFORNIA
 BUSINESS, TRANSPORTATION AND HOUSING AGENCY
 DEPARTMENT OF TRANSPORTATION

PROPOSED RELINQUISHMENT

0 100 200 300 400

AREA TO BE RELINQUISHED [Patterned Box]
 ACCESS PROHIBITED [Patterned Box]

DR'N BY	PD	R/W MAP NO. P ₂ 2438, P ₂ 3445
C'LC BY	AG	CONTRACT NO.
C'K'D BY	AG	REL-1156
REVISED		

BOOK 20 PAGE 2