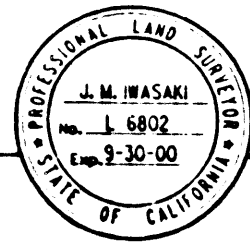


STATE OF CALIFORNIA
BUSINESS AND TRANSPORTATION AGENCY
DEPARTMENT OF TRANSPORTATION

RIGHT OF WAY MAPS OF
STATE HIGHWAY
IN THE CITY OF LOS ANGELES,
AT THE VALLEY CIRCLE BLVD INTERCHANGE

STATE	FEDERAL PROJECT NO.	DIST	COUNTY	ROUTE	POST MILES	SHEET NO.	TOTAL SHEETS
CALIF.		07	L.A.	101	27.35	1	1

J. M. Hasaki
PROFESSIONAL LAND SURVEYOR
December 17, 1998
EXPIRES 9-30-00

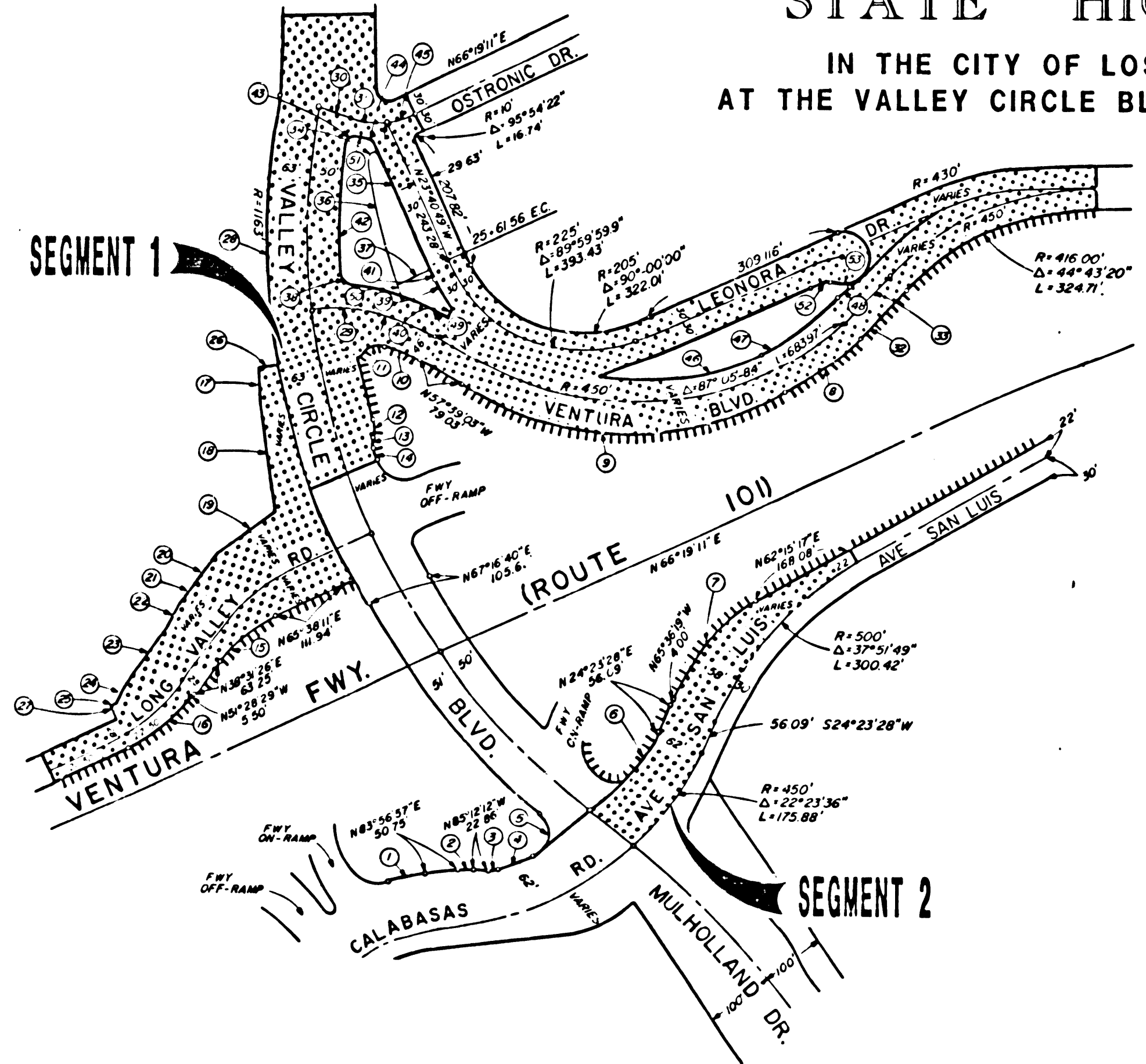


(IN COMPLIANCE WITH SECTION 128 & 129
OF THE STREET AND HIGHWAY CODE)

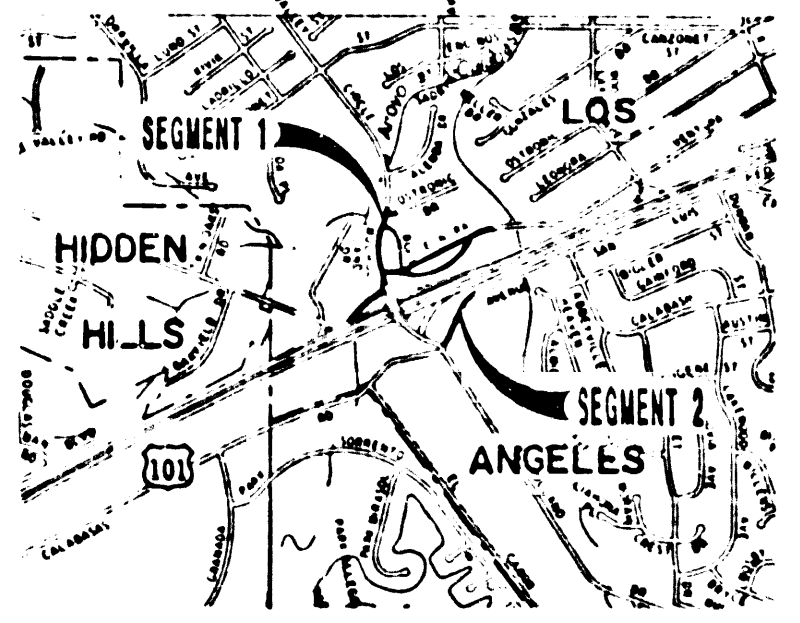
FILED FOR RECORD IN THE OFFICE OF COUNTY
RECORDER OF LOS ANGELES COUNTY

STATE HIGHWAY MAP BOOK NO. PAGE
DATE

STATE'S RIGHTS ARE NOT EXTINGUISHED UNTIL
RECORDATION OF RELATED CALIFORNIA
TRANSPORTATION COMMISSION RESOLUTION



NO.	RADIUS	DELTA	LENGTH	TANGENT
1	334.00'	10°13'37"	59.82'	29.89'
2	135.00'	10°50'51"	25.36'	12.82'
3	40.00'	20°18'47"	14.18'	7.15'
4	378.00'	8°5'37"	58.45'	28.28'
5	40.00'	118°11'51"	80.42'	63.03'
6	378.00'	9°41'25"	63.93'	32.04'
7	237.92'	30°36'42"	127.11'	
8	518.00'	18°18'10"	147.39'	74.20'
9	478.00'	81°40'26"	516.05'	286.21'
10	264.00'	18°45'50"	72.84'	
11	25.00'	111°02'40.3"	71.50'	
12	45.13'	32°38'21"	25.72'	13.22'
13	26.20'	34°18'43"	15.92'	8.21'
14	1050.00'	5°27'24"	19.07'	9.54'
15	236.00'	27°06'45"	111.68'	56.90'
16	1155.00'	01°01'21"	20.61'	10.31'
17	502'34"00"E	53.97'		
18	508'21"25"E	150.99'		
19	555'54"40"E	103.94'		
20	539'25"15"W	53.84'		
21	536'18"26"W	49.34'		
22	527'57"00"W	47.81'		
23	536'25'37"W	102.23'		
24	525'43'29"W	24.208'		
25	564'00'55"W	10.00'		
26	N78°31'40"E	33.25'		
27	N25°59'08"E	9.10'		
28	1183'	30°16'57"	614.68'	
29	300'	38°45'22"	202.83'	105.52'
30	N69°56'35"W	52.89'		
31	136.25'	23°40'06"	56.28'	
32	N44°22'21"E	101.50'		
33	N44°37'12"E	100.01'		
34	20.00'	40°46'43"	14.23'	
35	523'40'50"E	197.72'		
36	950.00'	11°45'28"	194.95'	
37	N64°19'11"E	61.95'		
38	35.00'	81°42'07"	49.91'	
39	255.00'	14°24'10"	64.10'	
40	S35°07'-31"W	18.09'		
41	S23°40'49"E	5.00'		
42	1080.00'	10°26'0.8"	193.03'	
43	25.00'	95°13'10"	41.55'	
44	25.00'	59°9'22.5"	25.81'	
45	136.25'	20°04'08"	47.72'	
46	412.00'	34°33'33"	248.51'	
47	458.25'	18°26'34"	147.51'	
48	145'28'25"E	12.611'		
49	336.50'	14°18'28"	81.93'	
50	950.00'	0°40'32"	11.20'	
51	154.25'	06°09'33"	18.58'	
52	40.00'	49°40'43"	34.68'	
53	45.00'	36°52'46"	28.97'	



AREA TO BE RELINQUISHED
NO SCALE

98-2301908
98 2301908

FILED
AT REQUEST OF
DEPT. OF TRANSPORTATION
DEC 18 1998
11 P.M.
BOOK 20
AT PAGE 8
COUNTY CLERK

STATE OF CALIFORNIA
BUSINESS, TRANSPORTATION AND HOUSING AGENCY
DEPARTMENT OF TRANSPORTATION

PROPOSED RELINQUISHMENT

0 100 200 300 400

AREA TO BE RELINQUISHED
ACCESS PROHIBITED

DR'N BY	PD	R/W MAP NO.	F2213-1011-2, 13,14
C/LC BY	AG	CONTRACT NO.	
C/K'D BY	AG		
REVISED			REL-1209

BOOK 20 PAGE 8