

UNION PACIFIC SYSTEM
L.A. & S.L.R.R. CO.

RECORD PLAN AND PROFILE OF
8\"/>

AS CONSTRUCTED IN
(PROPOSED) FERGUSON DRIVE
BETWEEN INDUSTRIAL AVENUE AND A POINT 2750 FEET EASTERLY
IN LOT 2 TRACT No. 7207 M.B. 115-17, 18.

SCALE: HOR. 1-INCH = 40 FEET. JULY 1927.
VER. 1-INCH = 4 FEET.

U.P. DRAWING No. 2202-103 7/27
COUNTY OF LOS ANGELES CALIF.

Approved July 20, 1927.
P. S. Adams
Asst. Chief Engineer, L.A. & S.L.R.R.

Recommended *W. J. ...* Approved *J. ...*
COUNTY SURVEYOR COUNTY SURVEYOR

Approved *A. ...*
CHIEF ENGINEER OF COUNTY
SANITATION DISTRICT No. 1

LEGEND

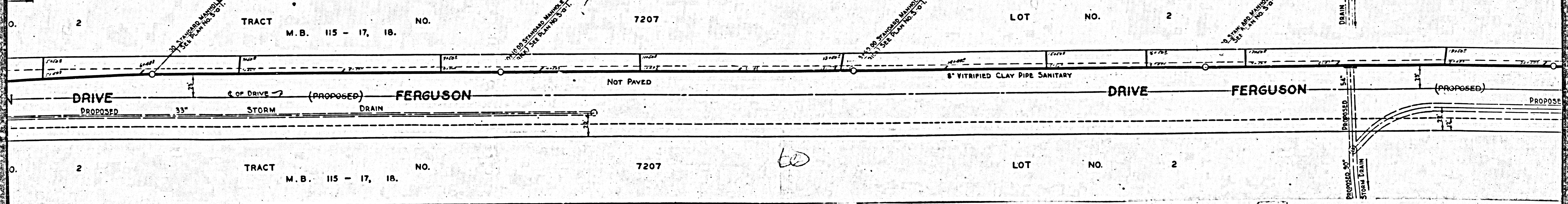
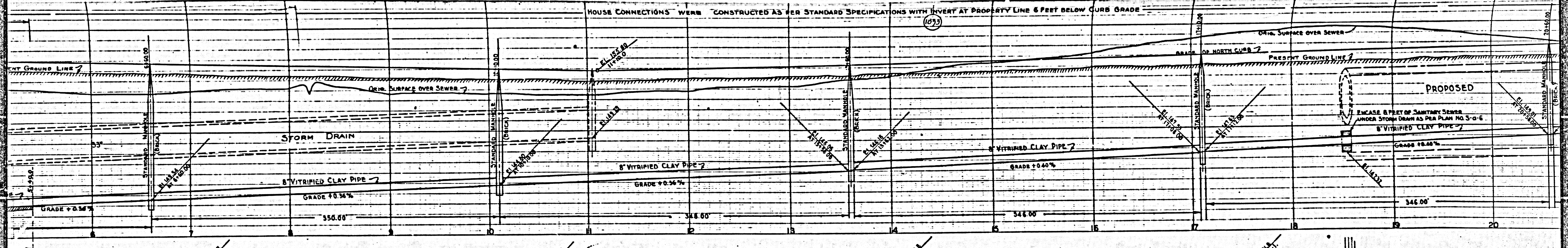
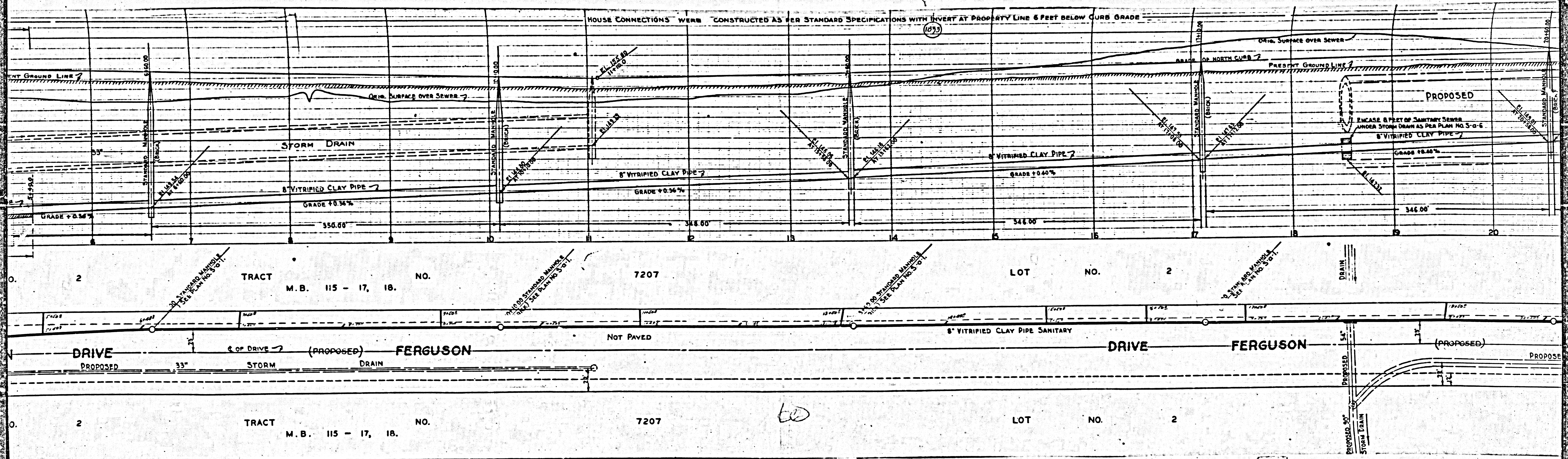
Vitrified Clay Pipe Sanitary Sewers and Brick Structures to be constructed shown thus.

Vitrified Clay Pipe House Connections to be constructed shown thus.

Curb Line shown thus.

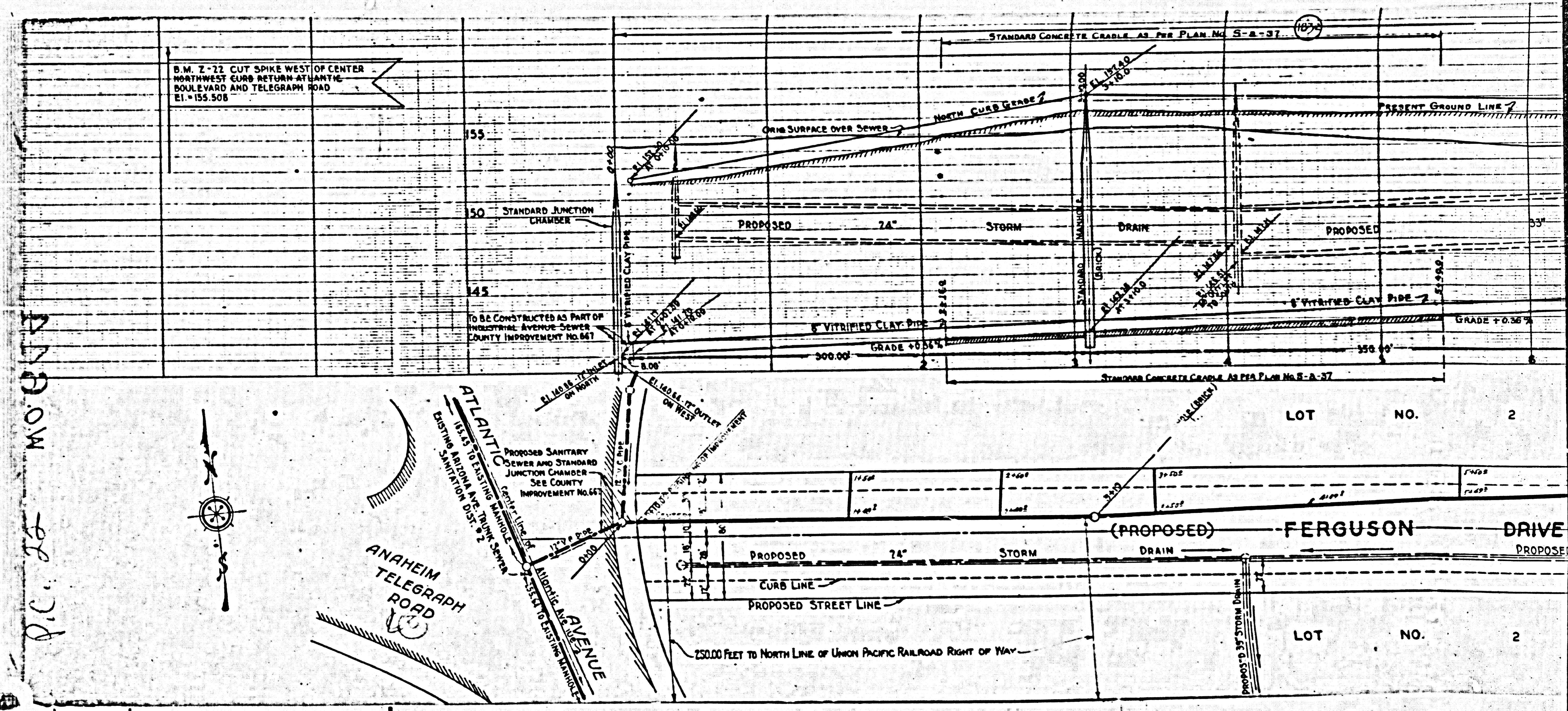
NOTE: Grades to which this improvement is to be constructed shown on Plans and Profiles. Grade elevations are shown by circles. Elevations are in feet, refer to top of curb and are above U.S. & S. or mean sea level datum. At all points between designated points the grade shall be established so as to conform to a straight line drawn between said designated points. This drawing and the data hereon are hereby made a part of the specifications.

| REFERENCES | | | |
|--------------------------|----------|----------|-----------|
| COUNTY WALL SHEET NO. 36 | DESIGNED | Deaumont | JULY 1927 |
| | TRACED | Deaumont | JULY 1927 |
| | CHECKED | Pickett | MAY 1927 |



TRACT M.B. 115 - 17, 18. NO. 7207 LOT NO. 2

TRACT M.B. 115 - 17, 18. NO. 7207 LOT NO. 2



B.M. 7-22 CUT SPIKE WEST OF CENTER
 NORTHWEST CORNER RETURN AT ANTI
 BOWL AVENUE AND TELEGRAPH ROAD
 E1. = 155.508

50 STANDARD JUNCTION
 CHAMBER

TO BE CONSTRUCTED AS PART OF
 INDUSTRIAL AVENUE SEWER
 COUNTY IMPROVEMENT NO. 61

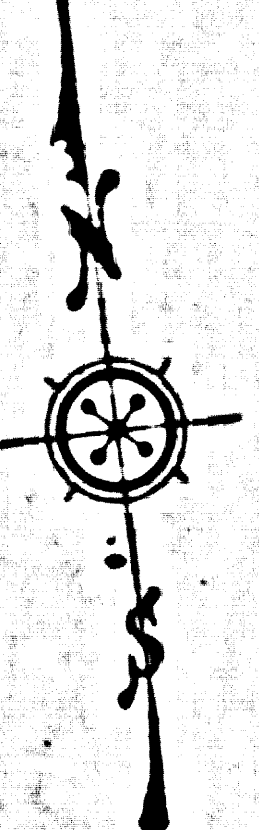
STANDARD CONCRETE CRADLE AS PER PLAN No. 5-A-37

LOT NO. 2

(PROPOSED) FERGUSON DRIVE

LOT NO. 2

P.C. 25



ANAHEIM
 TELEGRAPH
 ROAD

ATLANTIC
 DISTING. SANITATION DIST. 2
 PROPOSED SANITARY
 SEWER AND STANDARD
 JUNCTION CHAMBER
 SEE COUNTY
 IMPROVEMENT NO. 61

250.00 FEET TO NORTH LINE OF UNION PACIFIC RAILROAD RIGHT OF WAY