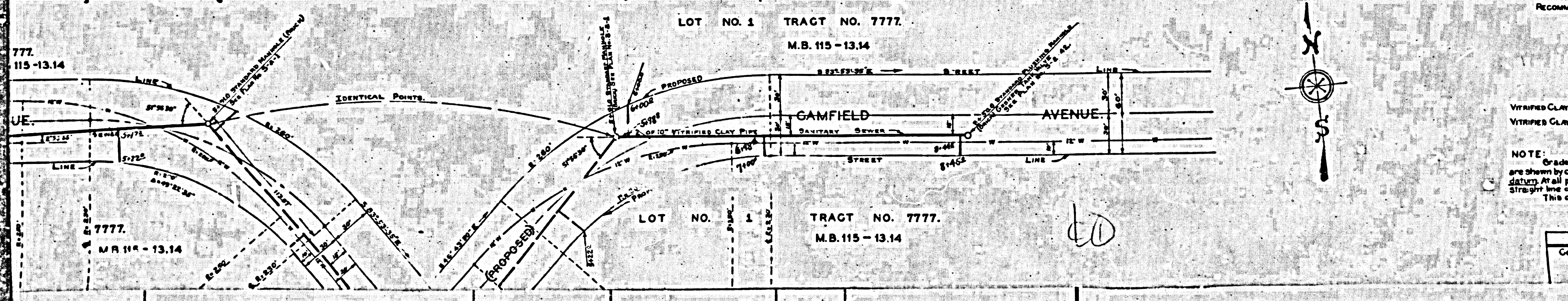


UNION PACIFIC SYSTEM  
 L. A. & S. L. R. R. CO.  
 PROFILE, ALIGNMENT, AND GRADE OF  
 10" SANITARY SEWER  
 TO BE CONSTRUCTED IN  
 (PROPOSED) GAMFIELD AVENUE,  
 FROM  
 ANAHEIM-TELEGRAPH ROAD TO A POINT 650 FEET EASTERLY  
 IN LOT 1, TRACT NO. 7777, M. B. 115-13.14  
 SCALE: - HOR. 1" = 40 FEET, MAY 1929.  
 VERT. 1" = 4 FEET.  
 UNION PACIFIC DRAWING NO. 38097-121  
 COUNTY OF LOS ANGELES, CALIF.

APPROVED: MAY 10, 1929  
*W. H. Adams*  
 CHIEF ENGINEER, L. A. & S. L. R. R.



RECOMMENDED: *W. H. Adams*  
 CHIEF DEPUTY COUNTY SURVEYOR.  
 APPROVED: *J. E. Rockwell*  
 COUNTY SURVEYOR.  
 APPROVED: *W. H. Adams*  
 CHIEF ENGINEER OF COUNTY SANITATION DISTRICT NO. 2.

— LEGEND —  
 VITRIFIED CLAY PIPE SANITARY SEWERS AND BRICK STRUCTURES TO BE CONSTRUCTED SHOWN THUS   
 VITRIFIED CLAY PIPE HOUSE CONNECTIONS TO BE CONSTRUCTED SHOWN THUS   
 NOTE: Grades to which this improvement is to be constructed shown on Plans and Profiles. Grade elevations are shown by circles. Elevations are in feet, relative to top of curb and are above U.S.C. & G. mean sea level datum. At all points between designated points the grade shall be established so as to conform to S. Straight line drawn between said designated points.  
 This drawing and the data hereon are hereby made a part of the specifications.

REFERENCE.			
COUNTY WALL SHEET NO. 6	DESIGNED	BEAUMONT,	MAY 1929
	TRACED	BEAUMONT,	MAY 1929
	CHECKED	W. H. ADAMS,	MAY 1929