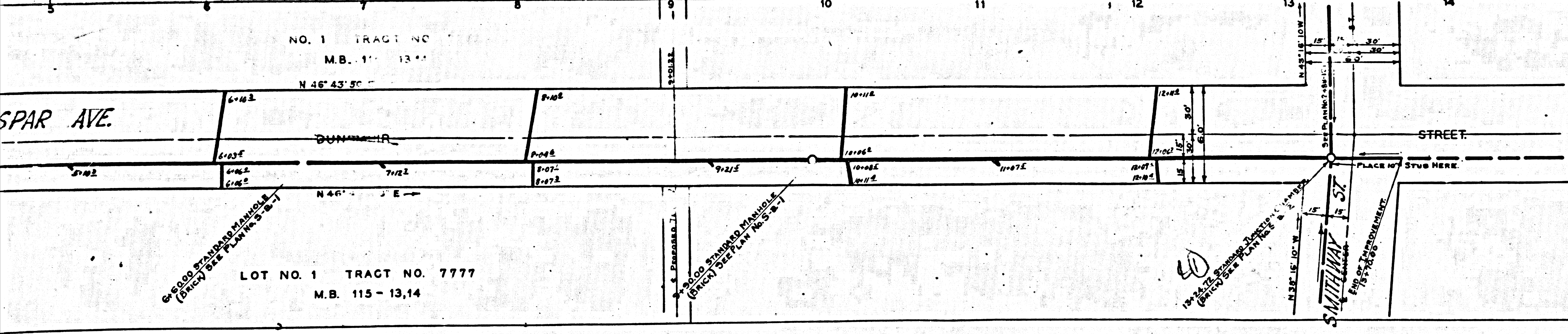


PRIVATE CONTRACT NO. 31
 UNION PACIFIC SYSTEM
 L.A. & S.F. R.R. CO.
 PROFILE ALIGNMENT AND GRADE OF
 15" SANITARY SEWERS
 TO BE CONSTRUCTED IN
 PROPOSED DUNSMUIR STREET
 BETWEEN
 ANAHEIM TELEGRAPH ROAD & PROPOSED CENTER STREET
 IN LOT 1 TRACT NO. 7777 M.B. 115-13, 14.
 SCALES: HOR. 1" = 40 FEET, DEC. 1928
 VERT. 1" = 4 FEET, DEC. 1928
 UNION PACIFIC DRAWING NO. 2487-121
 COUNTY OF LOS ANGELES, CALIF.

APPROVED: *[Signature]* JAN. 4, 1929
 CHIEF ENGINEER L.A. & S.F. R.R.
 RECOMMENDED: *[Signature]* COUNTY SURVEYOR
 APPROVED: *[Signature]* COUNTY SURVEYOR
 APPROVED: *[Signature]* CHIEF ENGINEER OF COUNTY SANITATION DISTRICT NO. 2

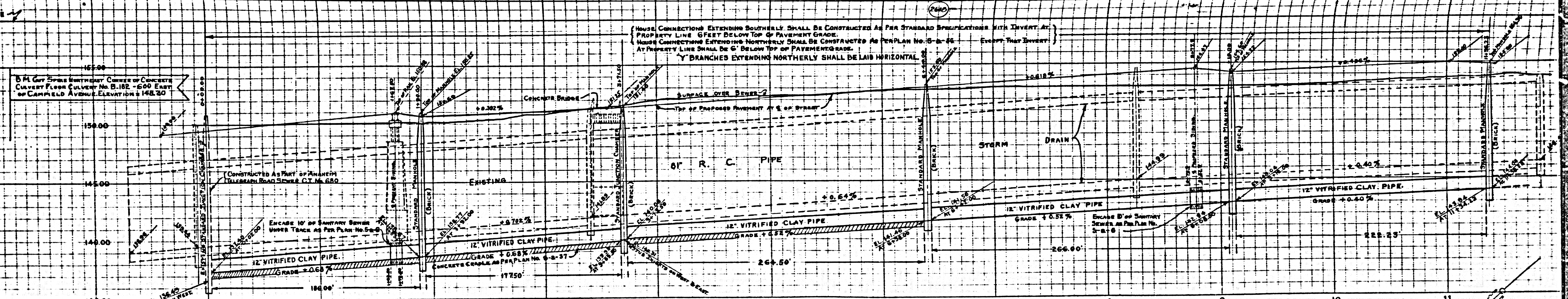


— LEGEND —
 Vitrified Clay Pipe Sanitary Sewers and Brick Structures to be constructed shown thus:
 Vitrified Clay Pipe House Connections to be constructed shown thus:
 NOTE:
 Grades to which this improvement is to be constructed shown on Plans and Profiles. Grade elevations are shown by circles. Elevations are in feet, refer to top of paving and are above U.S.G.S. or mean sea level datum. At all points between designated points the grade shall be established so as to conform to a straight line drawn between said designated points.
 This drawing and the data hereon are hereby made a part of the specifications.

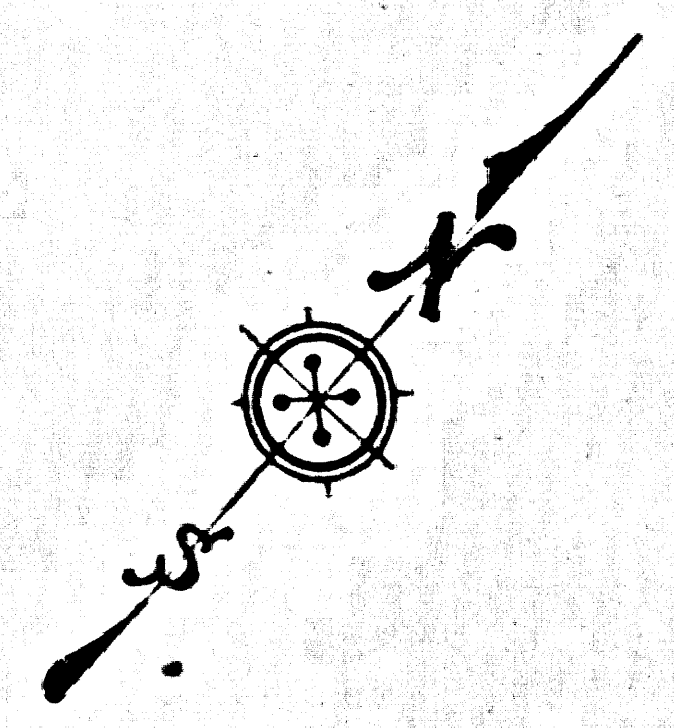
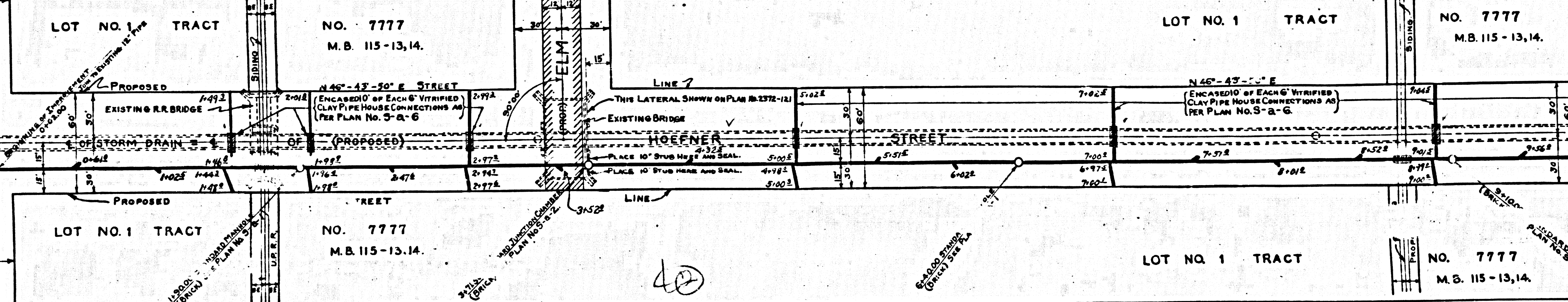
REFERENCES			
COUNTY WALL SHEET NO. 38	DESIGNED: TRACED:	BEAUMONT. ADAMS	DEC. 1928 JAN. 1929

TRIM PRINTS ON THIS LINE

TRIM PRINTS ON THIS LINE

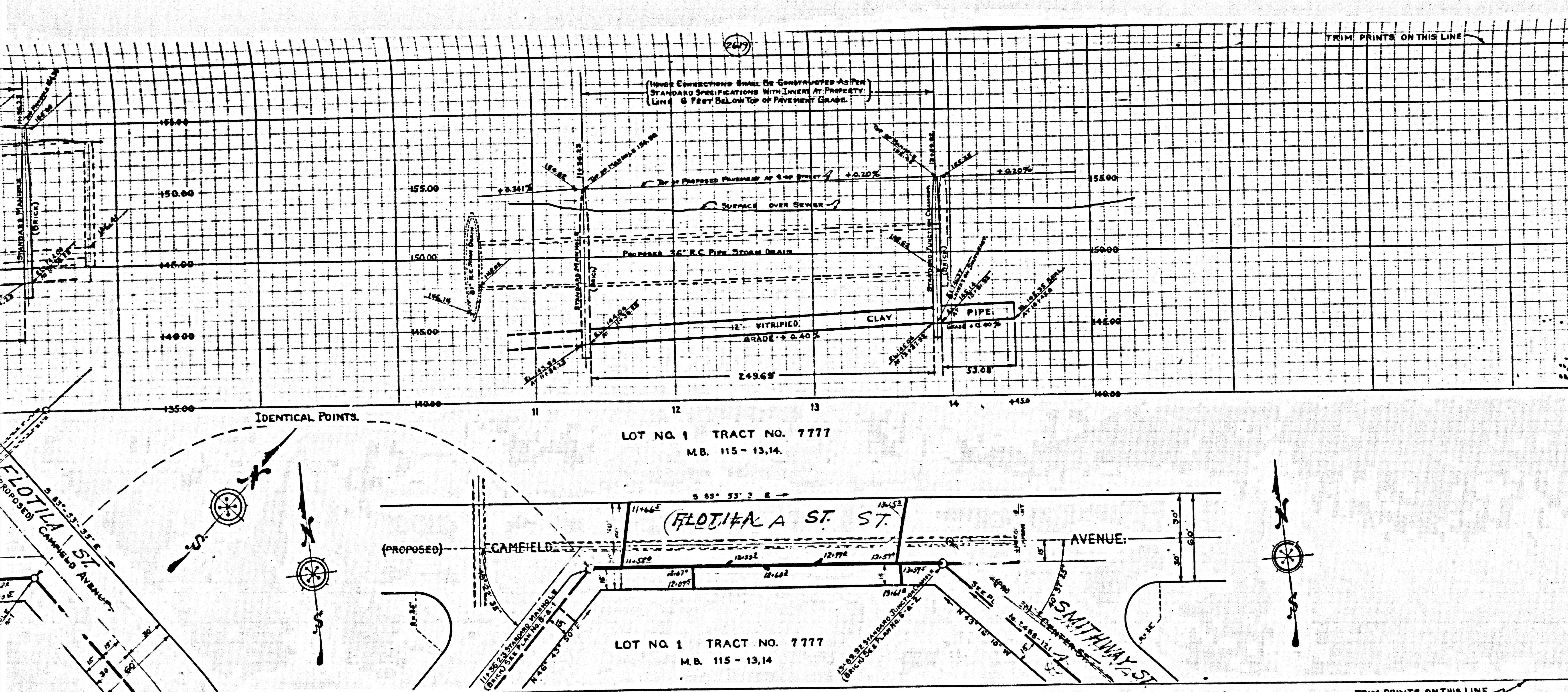


5 ft. dia. pipe northern center of concrete
 CONCRETE FLOOR CONCRETE NO. 8.185 - 5.00 EAST
 OF CAMPFIELD AVENUE. ELEVATION 148.30





40

TRIM PRINTS ON THIS LINE



PRIVATE CONTRACT NO. 51
 UNION PACIFIC SYSTEM
 L. A. & S. L. R. R. CO.
 PROFILE, ALIGNMENT, AND GRADE OF
 12" SANITARY SEWERS.
 TO BE CONSTRUCTED IN
 PROPOSED HOFNER STREET
 BETWEEN FLOTILLA
 ANAHEIM TELEGRAPH ROAD & PROPOSED CAMFIELD AVENUE
 AND FLOTILLA
 PROPOSED CAMFIELD AVENUE
 BETWEEN SMITHWAY
 PROPOSED HOFNER STREET & PROPOSED CENTER STREET.
 IN LOT 1 TRACT NO. 7777, M. B. 115-13,14.
 SCALE: HOR. 1"=40 FEET, DEC. 1928.
 UNION PACIFIC DRAWING NO. 2486-121
 COUNTY OF LOS ANGELES, CALIF.

APPROVED JAN. 4, 1929
 P. S. Adams
 CHIEF ENGINEER L. A. & S. L. R. R.
 RECOMMENDED Alfred Jones
 CHIEF DEPUTY COUNTY SURVEYOR.
 APPROVED R. Rockwell
 COUNTY SURVEYOR.
 APPROVED Allwance
 CHIEF ENGINEER OF COUNTY SANITATION DISTRICT NO. 2.

— LEGEND —
 Vitrified Clay Pipe Sanitary Sewers and Brick Structures to be constructed shown thus: 
 Vitrified Clay Pipe House Connections to be constructed shown thus: 
 NOTE:
 Grades to which this improvement is to be constructed shown on Plans and Profiles. Grade elevations are shown by circles. Elevations are in feet, refer to top of pavement and are above U.S.G.S. or mean sea level datum. At all points between designated points the grade shall be established so as to conform to a straight line drawn between said designated points.
 This drawing and the data hereon are hereby made a part of the specifications.

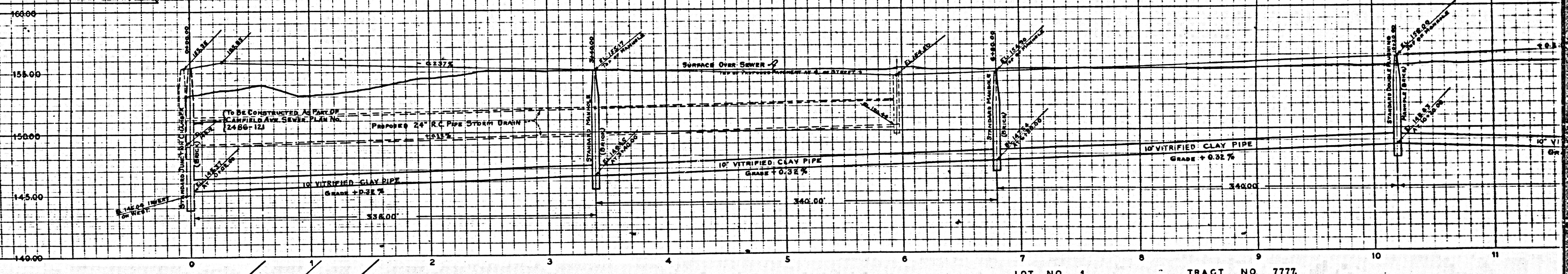
REFERENCES			
COUNTY WALL SHEET NO. 36	DESIGNED:	BEAUMONT.	DEC. 1928
	TRACED:	BEAUMONT.	DEC. 1928
	CHECKED:	ADAMS	DEC. 1928

151-8845

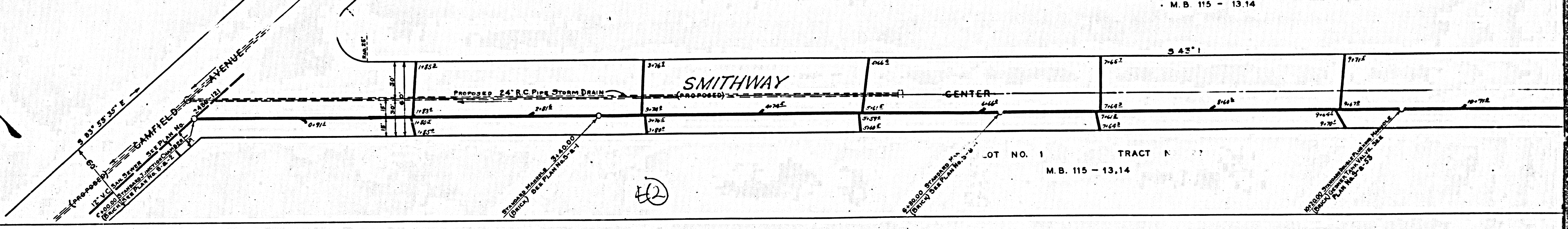
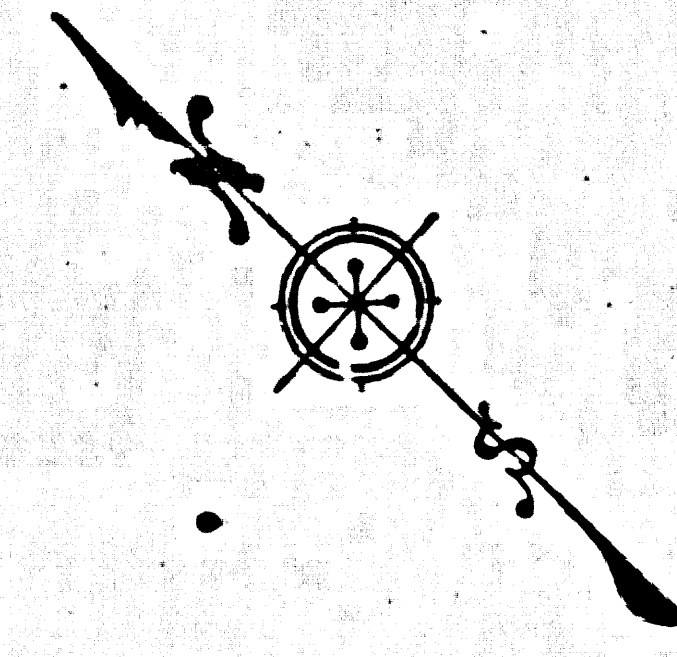
D.M. CUT SPIRE NORTHWEST CORNER OF CONCRETE
COURT FLOOR CURVE No. 2198 - 500' EAST
OF CAMPFIELD AVENUE ELEVATION 148.20

HOUSE CONNECTIONS SHALL BE CONSTRUCTED AS PER
STANDARD SPECIFICATIONS WITH INVERT AT PROPERTY
LINE 6' FEET BELOW TOP OF PAVEMENT GRADE.

BRANCHES SHALL BE LAID HORIZONTAL AND HOUSE
CONNECTIONS CONSTRUCTED WITH 1/8" RISE PER
FOOT TO PROPERTY LINE.

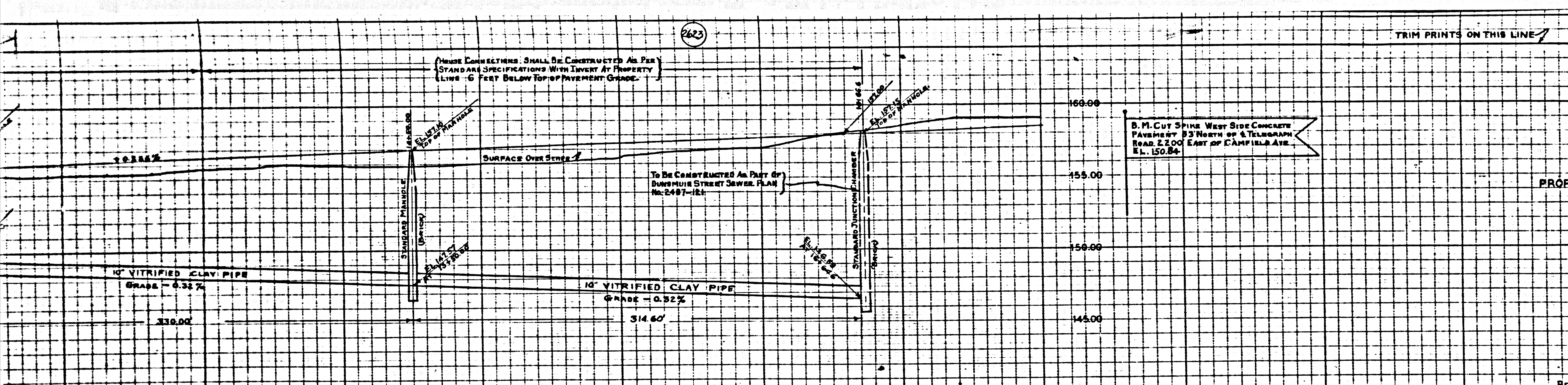


LOT NO. 1 TRACT NO. 7777
M.B. 115 - 13.14



LOT NO. 1 TRACT N
M.B. 115 - 13.14

42



TRIM PRINTS ON THIS LINE

③

UNION PACIFIC SYSTEM
 L. A. & S. L. R. R. CO.
 PROFILE ALIGNMENT AND GRADE OF
10" SANITARY SEWERS
 TO BE CONSTRUCTED IN
 PROPOSED CENTER STREET
 BETWEEN
 PROPOSED GAMFIELD AVENUE AND PROPOSED DUNSMUIR STREET
 IN LOT 11 TRACT NO. 7777 M. B. 119-13, 14.
 SCALES - HOR. 1" = 40 FEET, DEC. 1928.
 VERT. 1" = 4 FEET.
 UNION PACIFIC DRAWING NO. 2488-121
 COUNTY OF LOS ANGELES, CALIF.

APPROVED: *JAN. 8, 1929*
[Signature]
 CHIEF ENGINEER L. A. & S. L. R. R. CO.

RECOMMENDED: *[Signature]* CHIEF DEPUTY COUNTY SURVEYOR.
 APPROVED: *[Signature]* COUNTY SURVEYOR.
 APPROVED: *[Signature]* CHIEF ENGINEER OF COUNTY SANITATION DISTRICT NO. 2.

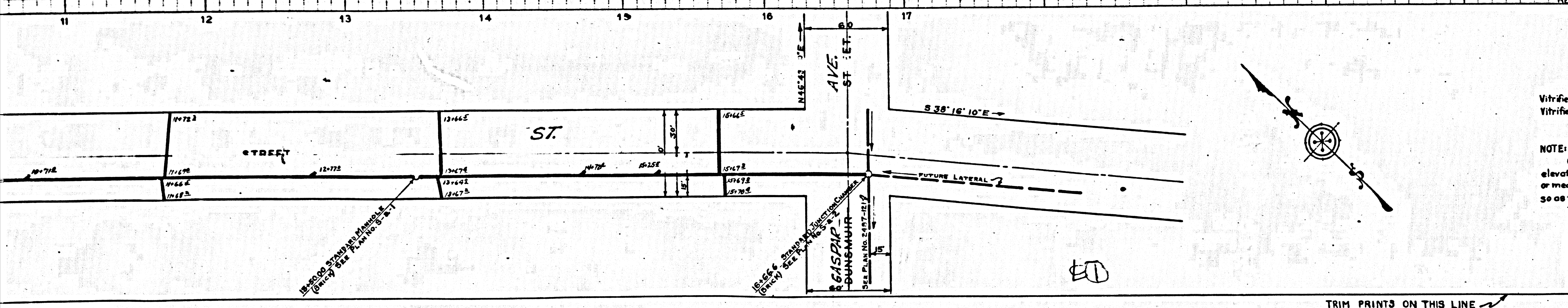
— LEGEND —

Vitrified Clay Pipe Sanitary Sewers and Brick Structures to be constructed shown thus

Vitrified Clay Pipe House Connections to be constructed shown thus

NOTE:
 Grades to which this improvement is to be constructed shown on Plans and Profiles. Grade elevations are shown by circles. Elevations are in feet, refer to top of paving and are above U.S.G.S. or mean sea level datum. At all points between designated points the grade shall be established so as to conform to a straight line drawn between said designated points.
 This drawing and the data hereon are hereby made a part of its specifications.

REFERENCES.			
COUNTY WALL SHEET NO. 36	DESIGNED.	BEAUMONT.	DEC. 1928
	TRACED.	BEAUMONT.	DEC. 1928
	CHECKED.	ADAMS	JAN. 1929



TRIM PRINTS ON THIS LINE

M. O. W. & S. L. R. R. CO.
 COUNTY SURVEYOR

PRIVATE CONTRACT NO. 31

UNION PACIFIC SYSTEM
L. A. & S. L. R. R. CO.

PROFILE ALIGNMENT AND GRADE OF
15" SANITARY SEWERS
TO BE CONSTRUCTED IN
ANAHEIM TELEGRAPH ROAD
FROM A POINT 3018 EAST OF
LOS ANGELES & SALT LAKE R.R. CO. RIGHT OF WAY
TO A POINT 282 FEET EASTERLY
IN LOT 1 TRACT NO. 7777 M.B. 115-13-14
SCALE: HORIZ. 1" = 40 FEET DEC. 1928
UNION PACIFIC DRAWING NO. 2496-121
COUNTY OF LOS ANGELES CALIF.

APPROVED JAN. 4, 1929
R. S. Adams
CHIEF ENGINEER L. A. & S. L. R. R.

RECOMMENDED *Alfred James* CHIEF DEPUTY COUNTY SURVEYOR
APPROVED *J. A. Rockwell* COUNTY SURVEYOR
APPROVED *Adams* CHIEF ENGINEER OF COUNTY SANITATION DISTRICT NO. 2

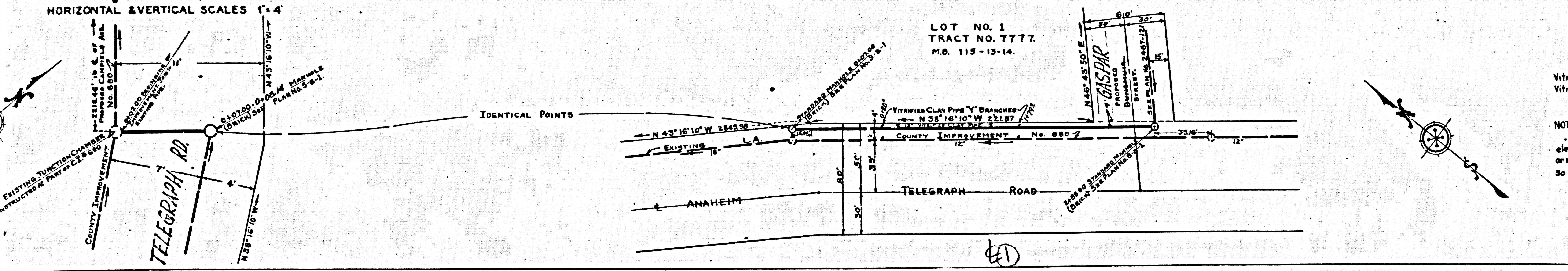
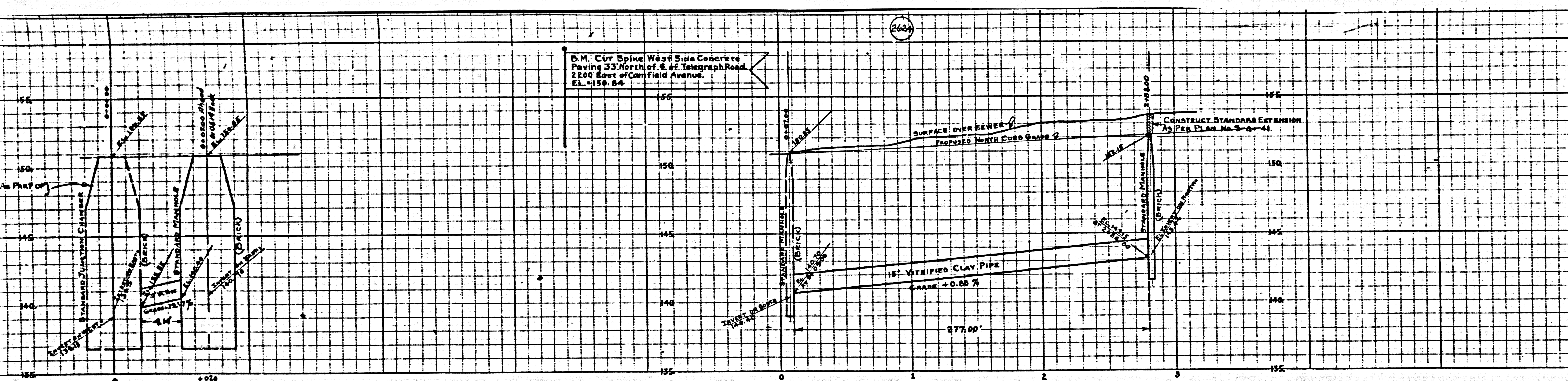
— LEGEND —

Vitrified Clay Pipe Sanitary Sewers and Brick Structures to be constructed shown thus:

Vitrified Clay Pipe "Y" Branches to be laid as shown:

NOTE:
Grades to which this improvement is to be constructed shown on Plans and Profiles. Grade elevations are shown by circles. Elevations are in feet, refer to top of curb and are above U.S.G.S. or mean sea level datum. At all points between designated points the grade shall be established so as to conform to a straight line drawn between said designated points.
This drawing and the data hereon are hereby made a part of the specifications.

REFERENCES.			
COUNTY WALL SHEET No. 36	DESIGNED	BEAUMONT	DEC. 1928
COUNTY IMPROVEMENT DISTRICT No. 680	TRACED	BEAUMONT	DEC. 1928
	CHECKED	ADAMS	JAN. 1929



(E)