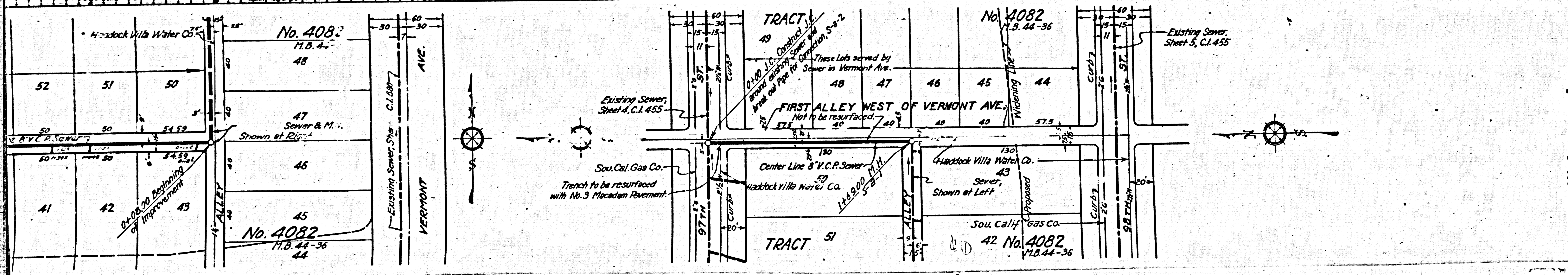


DOUBLE SCALE

PRIVATE CONTRACT NO. 43  
 DEPARTMENT OF WATER AND POWER  
 BUREAU OF POWER AND LIGHT  
 CITY OF LOS ANGELES  
 PROFILE ALIGNMENT AND GRADE OF  
 SANITARY SEWERS  
 CONSTRUCTED IN  
 FIRST ALLEY NORTH OF 98TH STREET  
 BETWEEN THE FIRST ALLEY WEST OF VERMONT AVE. AND HALLGATE AVE.  
 AND IN PORTIONS OF  
 FIRST ALLEY WEST OF VERMONT AVENUE  
 97TH STREET

AUGUST 1930  
 SCALE: HORIZ. 1"=40'  
 VERT. 1"=4'



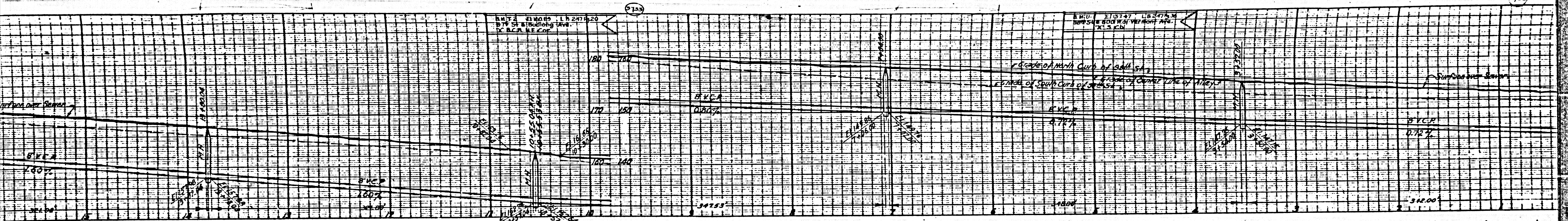
APPROVED  
 E. F. SCATTERGOOD  
 COUNTY SURVEYOR  
 COUNTY OF LOS ANGELES, CALIFORNIA  
 RECOMMENDED *Alfred Jones*  
 APPROVED *J. R. Rockhold*  
 APPROVED *A. K. Warren*  
 FOR LEASE BY *C. R. Conroy*  
 SEE PLAN NO. 9-8-30

NOTE:  
 GRADES TO WHICH THIS IMPROVEMENT IS CONSTRUCTED ARE SHOWN ON PLANS AND PROFILE GRADE POINTS FOR TOP OF CURB, CENTER LINE OF STREET OR CENTER LINE OF ALLEY ARE SHOWN CIRCLED ON PROFILE. AT ALL POINTS BETWEEN DESIGNATED POINTS THE GRADE SHALL BE ESTABLISHED SO AS TO CONFORM TO A STRAIGHT LINE DRAWN BETWEEN SAID DESIGNATED POINTS. ELEVATIONS ARE IN FEET ABOVE U. S. G. S. DATUM OR MEAN SEA LEVEL. UNIT PRICES FOR ADDITIONAL WORK WHICH MAY BE REQUIRED BUT WHICH CANNOT BE ASCERTAINED IN ADVANCE SHALL BE SUBMITTED IN THE PROPOSAL. THIS DRAWING AND THE DATA HEREON ARE HEREBY MADE A PART OF THE SPECIFICATIONS.

REFERENCES		
W. S. 24	DESIGNED	PICKETT
A. B. -	TRACED	KUENZEL & ZINN
L. B. 237-247-C.I. 455	CHECKED	ADAMS

AUG. 1930  
 AUG. 1930  
 AUG. 1930





No. 3096 17.B. 47-63										TRACT										No. 3096 17.B. 47-63																											
85	84	83	82	81	80	79	78	77	76	69	68	67	66	65	64	63	62	61	60	59	58	57	56	55	54	53	52	51	42	41	40	39	38	37	36	35	34	33	32	31	30	29	28	27	26	25	24
Haddock Villa Water Co.										TRACT										TRACT																											
Trench to be resurfaced with No. 3 Macadam Pavement.										TRACT										TRACT																											
No. 3096 17.B. 47-63										TRACT										TRACT																											

These Lots Served by Sewer in 97th St.

FIRST ALLEY NORTH OF 98TH ST.

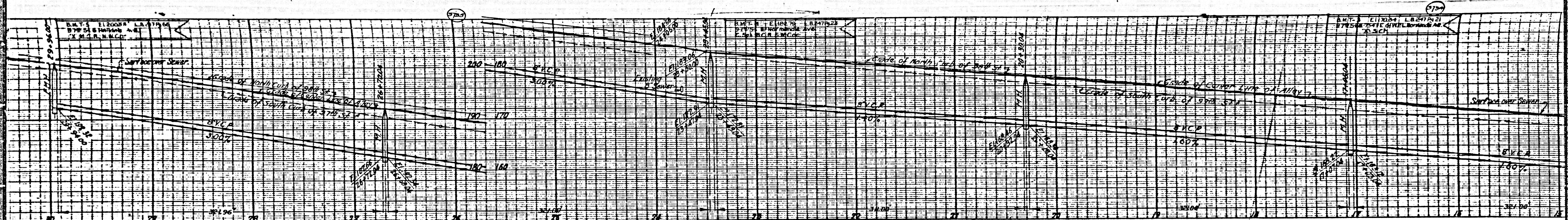
NOT SURFACED

CORNER LINE BY C.P. SHERMAN

Not to be resurfaced.

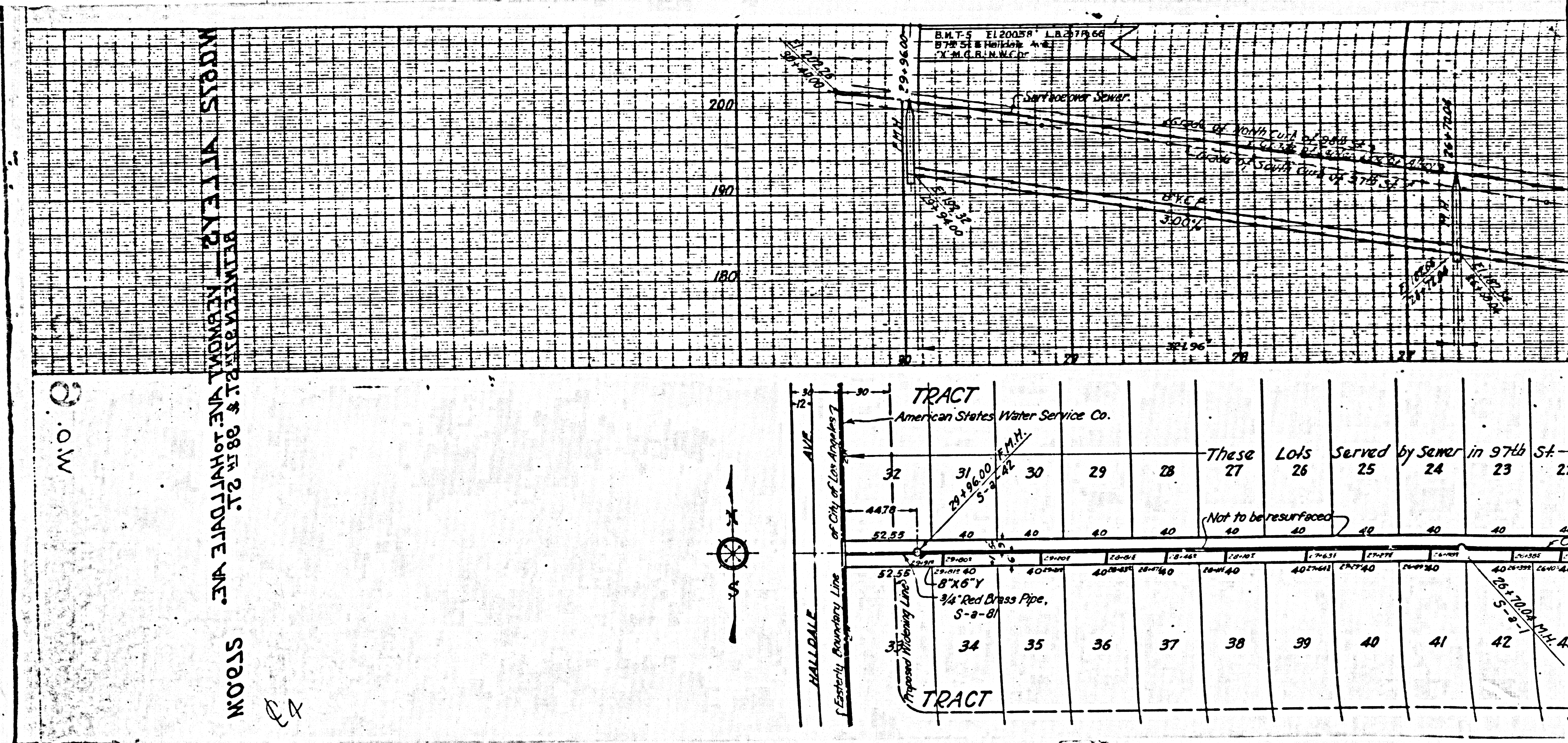
Proposed Widening Line





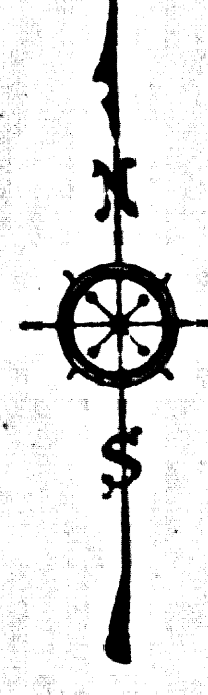
TRACT American States Water Service Co.										TRACT No. 5292 M.B. 58, 39-40										TRACT No. 5292 M.B. 58, 39-40											
32	31	30	29	28	27	26	25	24	23	22	21	20	19	18	17	16	15	14	13	12	11	10	9	8	7	6	5	4	3	2	1
These Lots Served by Sewer in 97th St										These Lots Served by Sewer in 97th St										These Lots Served by Sewer in 97th St											
Not to be resurfaced										Trench to be resurfaced with No. 3 Macadam Pavement										Not Surfaced											
American States Water Service Co.										SOU CALIF GAS CO.										Haddock Villa Water Co.											
34	35	36	37	38	39	40	41	42	43	44	45	46	47	48	49	50	51	52	53	54	55	56	57	58	59	60	61	62	63	64	65
TRACT										TRACT										TRACT											
Proposed Widening Line 7										Proposed Widening Line 7										Proposed Widening Line 7											





WOODS AVE 22' BURNHAMPTON ST 88 FT 2 1/2' BURNHAMPTON AVE 20' HORTON AVE 20' STADON

TRACT										American States Water Service Co.	
32	31	30	29	28	27	26	25	24	23	These Lots Served by Sewer in 97th St.	
40	40	40	40	40	40	40	40	40	40	Not to be resurfaced	
34	35	36	37	38	39	40	41	42	TRACT		



24