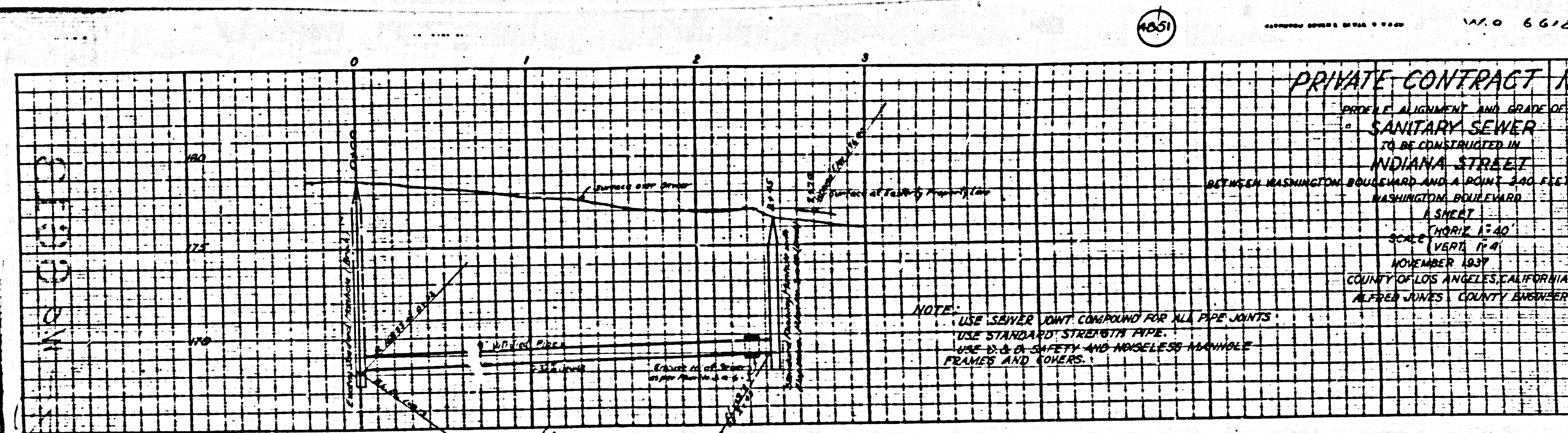


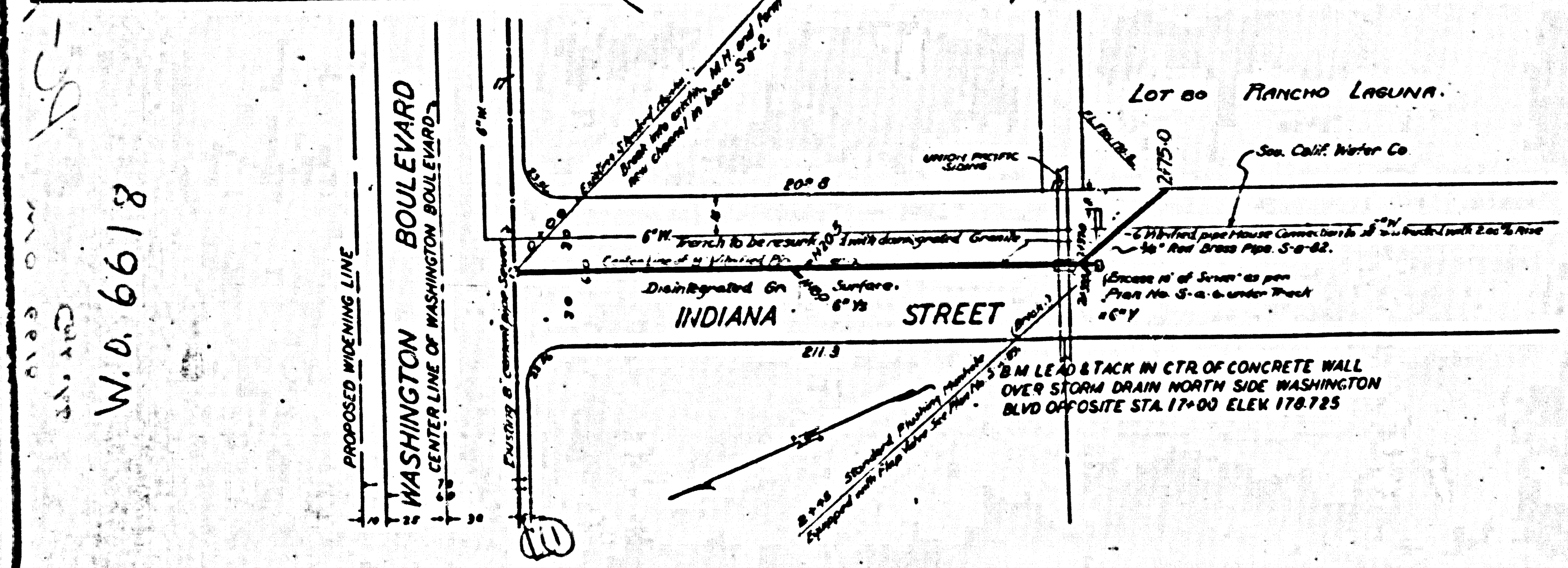
1051

W.D. 6618



PRIVATE CONTRACT NO. 1051
 PROFILE ALIGNMENT AND GRADE OF
 SANITARY SEWER
 TO BE CONSTRUCTED IN
 INDIANA STREET
 BETWEEN WASHINGTON BOULEVARD AND A POINT 240 FEET S
 WASHINGTON BOULEVARD
 1 SHEET
 HORIZ. 1"=40'
 SCALE (VERT. 1"=4')
 NOVEMBER 1937
 COUNTY OF LOS ANGELES, CALIFORNIA
 ALFRED JAMES COUNTY ENGINEER

NOTE:
 USE SEWER JOINT COMPOUND FOR ALL PIPE JOINTS.
 USE STANDARD STREETWIDE PIPE.
 USE 2" x 4" SAFETY AND NOISELESS TANKABLE
 FRAMES AND COVERS.



RECOMMENDED *Oliver W. Young*
 CHIEF DESIGNER APPROVED
 APPROVED

NOTE:
 At all points between designated points the grade shall be established so as to
 show between said designated points.
 LEGEND:
 Modified pipe manhole connections to be constructed shown in
 Modified pipe sanitary sewers & brick structures to be constructed

PREPARED IN THE OFFICES OF OLIVER W. YOUNG
 REGISTERED CIVIL ENGINEER No. 1877
 6410 VAN NUYS BOULEVARD, VAN NUYS, CALIFORNIA

Oliver W. Young R.E. 18

W.D. 6618
 6410 VAN NUYS BOULEVARD