

**SHEET 2**  
**PROFILE-ALIGNMENT AND GRADE OF**  
**SANITARY SEWERS**  
 TO BE CONSTRUCTED IN  
**ALLEY THROUGH BLOCK A - TRACT No 10846**  
 ALSO  
**88th STREET**  
 FROM ALAMEDA ST. TO FIRST ALLEY WEST  
 ALSO  
**ALAMEDA STREET**  
 FROM 88th ST. TO FIRST ALLEY NORTH OF FIRESTONE BLVD.  
 IN THE COUNTY OF LOS ANGELES  
 SCALE (HORIZ. 1"=40'  
 (VERT. 1"=4')

RECOMMENDED *Alameda*  
 APPROVED *Alfred Jones*  
 APPROVED *Alfred Jones*  
 Field and Office Work by Wright Eng. Co.  
 By *Wright Eng. Co.*  
 FOR LEGEND  
 See Plan No 5-a-64

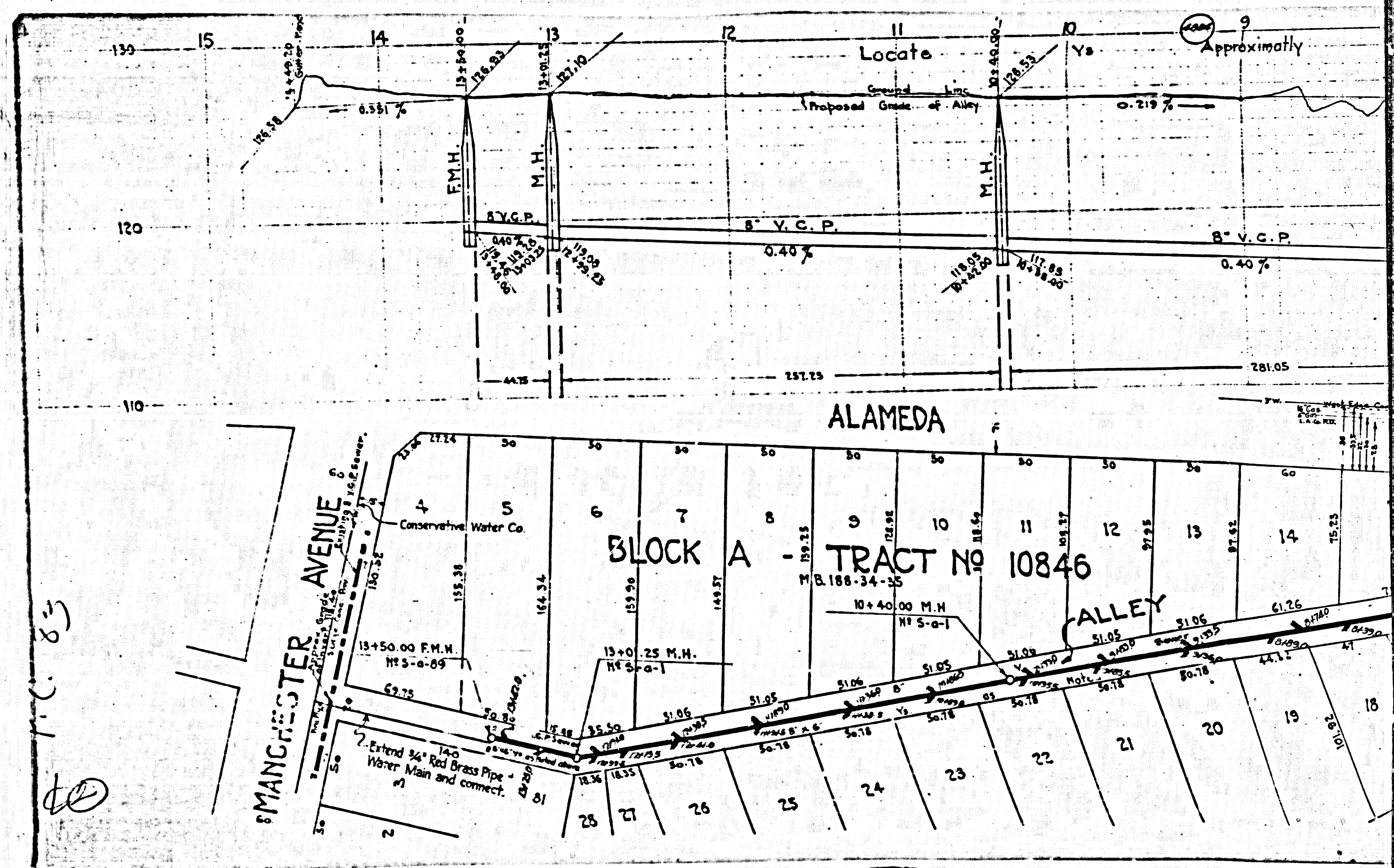
NOTE:-  
 USE SEWER JOINT COMPOUND FOR ALL PIPE JOINTS.  
 USE "D. & D" SAFETY AND NOISELESS MANHOLE  
 FRAMES AND COVERS.  
 USE STANDARD STRENGTH PIPE EXCEPT AS NOTED.  
 RESURFACE ALL TRENCH WITHIN PAVED AREA TO  
 MATCH EXISTING SURFACE.

NOTE:-  
 Grades to which this improvement is to be constructed are shown on plans and profiles. Grade points for top of curb center line of street or center line of alley are shown by circles on profiles. At all points between designated points the grade shall be established so as to conform to a straight line drawn between said designated points.  
 Elevation are in feet above U.S.G.S. Datum or mean sea level.  
 All prices for additional work, which may be required, but which cannot be ascertained in advance, shall be submitted in the proposal.  
 This Drawing and the data hereon, are hereby made a part of the specifications.

CHECKED BY *Wright Eng. Co.* JAN. 1930  
 OFFICE OF COUNTY ENGINEER  
**IN THIS CONTRACT CONSTRUCT FROM STA. 1+59.90 TO STA. 6+92.35 SHEET 1**  
**AND FROM STA. 0+00 TO STA. 3+33.70 SHEET 2- ALSO FROM STA. 5+37.30 TO STA. 13+50 SHEET 2**  
**APPROX. QUANTITIES:**  
 1639 FEET 8" V.C.P. SEWER  
 2 FLUSHING MANHOLES WITH 1-8" STUB - No S-a-42.  
 8 MANHOLES No S-a-1  
 45- 8" X 6" V.C.  
 CONNECT TO EXISTING F.M.H. STA. 1+59.90-SHEET 1- AND MAKE CHANGES.  
 CONNECT TO STUBS STA. 3+52.65 AND 5+37.30-SHEET 2

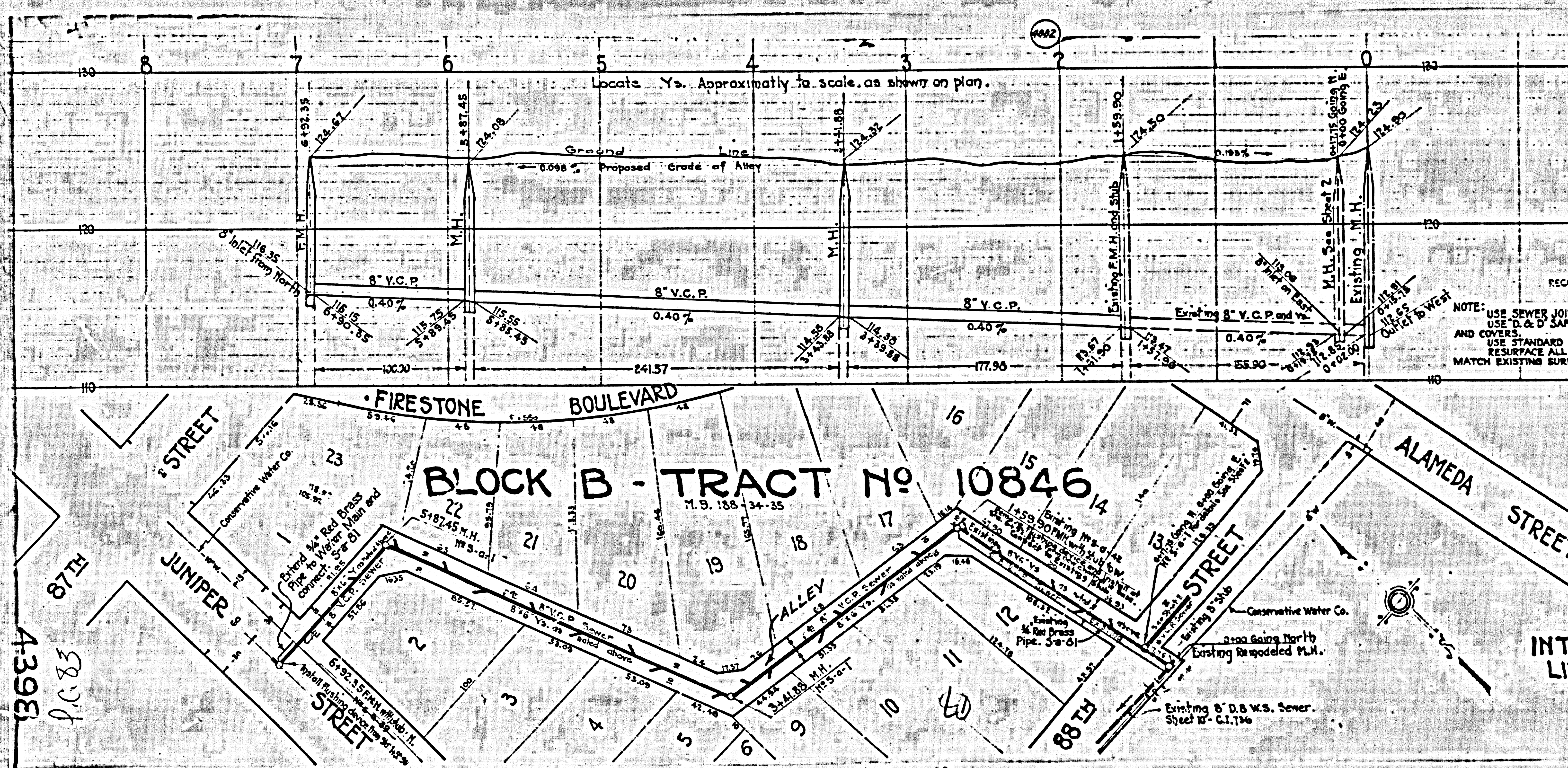
88th STREET





10  
M.C. 83





**SHEET 1**  
**PROFILE, ALIGNMENT AND GRADE OF**  
**SANITARY SEWERS**  
 TO BE CONSTRUCTED IN  
**ALLEY THROUGH BLOCK B**  
**TRACT NO 10846**  
 M.B. 188-34-35

IN THE COUNTY OF LOS ANGELES  
 SCALE HORIZ. 1" = 40'  
 VERT. 1" = 4'

RECOMMENDED: *Edmund*  
 C.P. Deputy  
 APPROVED: *Alfred Green*  
 City Engineer  
 APPROVED: *Adwards*  
 Chief Engineer of Public  
 Sanitation District No. 1

NOTE: USE SEWER JOINT COMPOUND FOR ALL PIPE JOINTS.  
 USE "D & D" SAFETY AND NOISELESS MANHOLE FRAMES  
 AND COVERS.  
 USE STANDARD STRENGTH PIPE.  
 RESURFACE ALL TRENCH WITHIN PAVED AREA TO  
 MATCH EXISTING SURFACE.

NOTE: Grades to which this improvement is to be constructed are shown on plans and profiles. Grade points for top of curb, center line of street or center line of alley are shown by circles. At all points between designated points the grade shall be established so as to conform to a straight line drawn between said designated points.  
 Elevation is in feet above U.S.S. Mean Sea Level.  
 All areas for additional work, if any, shall be shown on the drawings and the data hereon, and hereby made a part of the specifications.

IN THIS CONTRACT SEE SHEET 2 FOR  
 LIMITS OF CONTRACT AND QUANTITIES

CHECKED BY *Arthur J. ...* JAN. 1936  
 COUNTY ENGINEER

4393  
 P.C. 83

4398