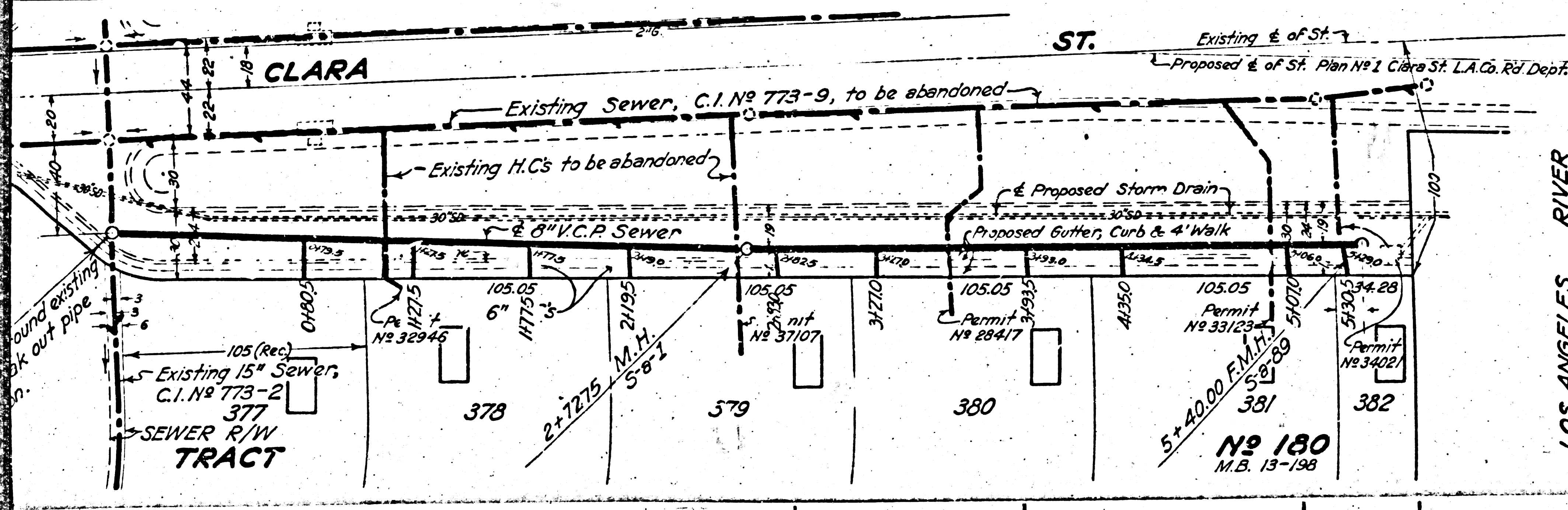


PROFILE, ALIGNMENT AND GRADE OF
SANITARY SEWER
 TO BE CONSTRUCTED IN
 NORTH AND SOUTH SIDES OF
CLARA STREET
 FROM LOS ANGELES RIVER TO A POINT 560 FT. WESTERLY

- USE WESTONS GASKETS AND FORMS FOR ALL PIPE JOINTS
- USE "D. & D." SAFETY AND NOISELESS MANHOLE FRAMES AND COVERS
- USE EXTRA STRENGTH PIPE
- RECONNECT EXISTING HOUSE SERVICES



NOTE:
 Fill all abandoned sewer structures with earth.
 Return all abandoned M.H. Frames and Covers
 and Sewer Flushing Apparatus and Equipment to
 L.A. County Sewer Maintenance Yard, 991 E. 33rd St.
 Los Angeles.

SCALE VERT. 1" = 10'
 HORIZ. 1" = 50'

JUNE 1938

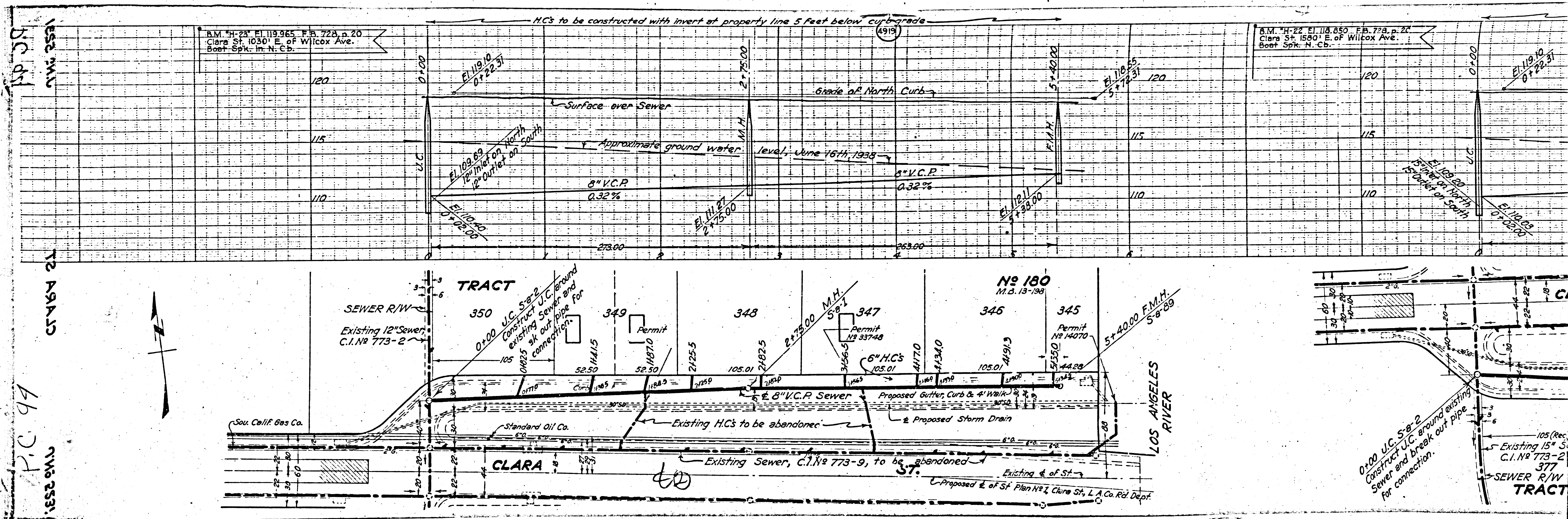
COUNTY OF LOS ANGELES, CALIFORNIA.
 ALFRED JONES COUNTY SURVEYOR

RECOMMENDED *[Signature]* CHIEF DEPUTY
 APPROVED *[Signature]* COUNTY SURVEYOR
 APPROVED *[Signature]* COUNTY ENGINEER

FOR LEGEND
 SEE PLAN NO. S-2-64

GRADES TO WHICH THIS IMPROVEMENT IS TO BE CONSTRUCTED ARE SHOWN ON PLANS AND PROFILES.
 GRADE POINTS FOR TOP OF CURB, CENTER LINE OF STREET OR CENTER LINE OF ALLEY ARE SHOWN BY
 CIRCLES ON PROFILES. AT ALL POINTS BETWEEN DESIGNATED POINTS THE GRADE SHALL BE ESTABLISHED
 SO AS TO CONFORM TO A STRAIGHT LINE DRAWN BETWEEN SAID DESIGNATED POINTS.
 ELEVATIONS ARE IN FEET ABOVE U. S. G. S. DATUM OR MEAN TIDE LEVEL.
 UNIT PRICES FOR ADDITIONAL WORK WHICH MAY BE REQUIRED BUT WHICH CANNOT BE ASCERTAINED
 IN ADVANCE SHALL BE SUBMITTED IN THE PROPOSAL.
 THIS DRAWING AND THE DATA HEREON ARE HEREBY MADE A PART OF THE SPECIFICATIONS.

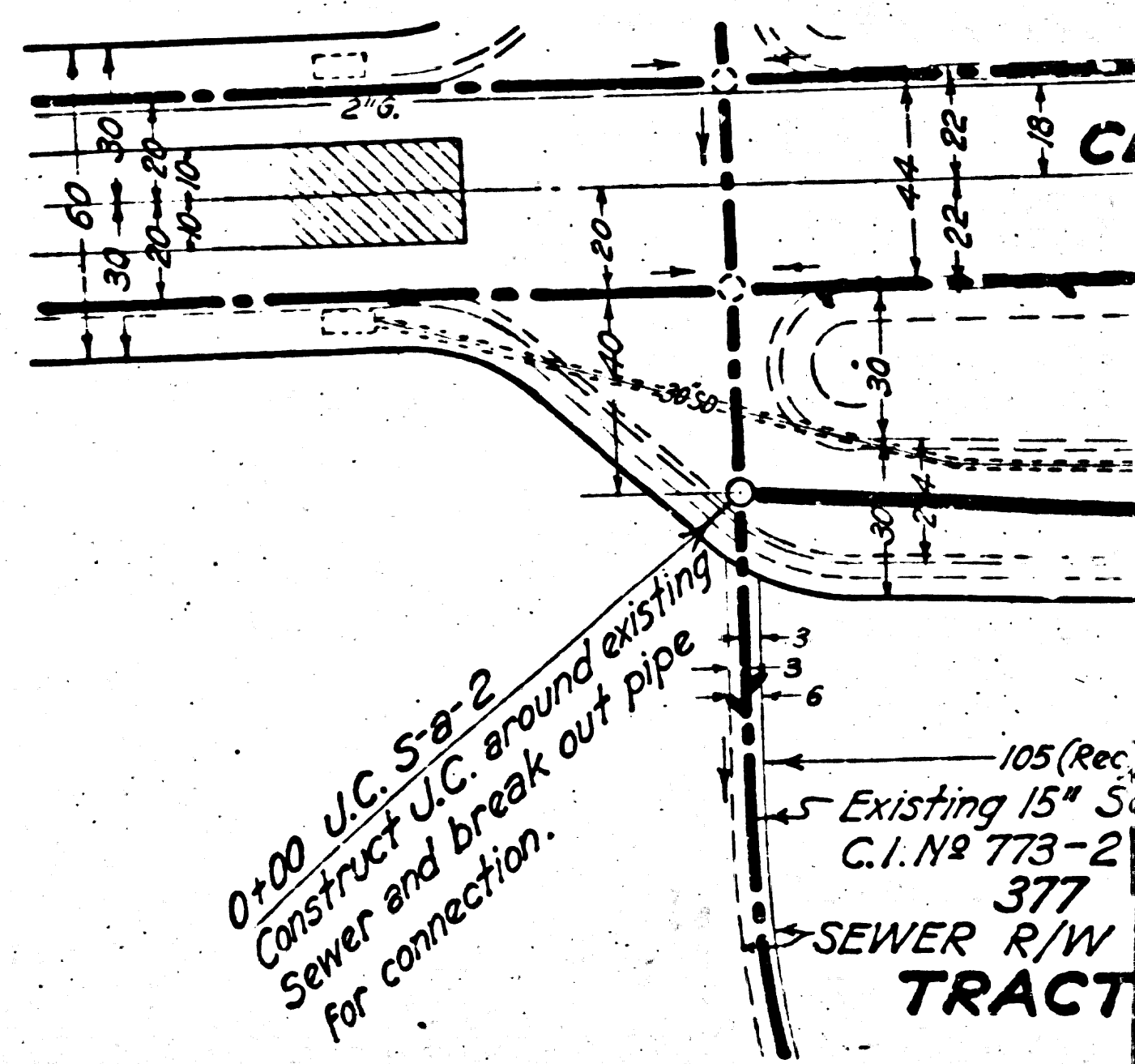
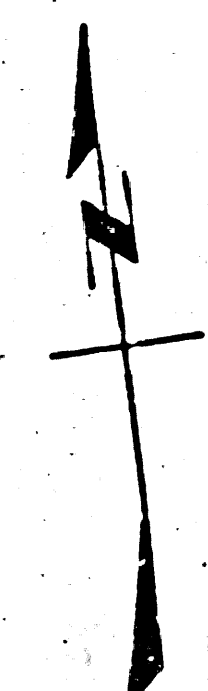
REFERENCES			
W.S. 7	DESIGNED	A. P. Collins	MAY 1938
A. B.	TRACED	H. T. Sparling	JUN 1938
F. B. 633, 734	CHECKED		193



B.M. "H-23" E. 119.965 F.B. 728, p. 20
 Clara St. 1050' E. of Wilcox Ave.
 Best Spk. in N. Cb.

B.M. "H-22" E. 118.850 F.B. 728, p. 27
 Clara St. 1580' E. of Wilcox Ave.
 Best Spk. N. Cb.

1252 2531
 1252 2531
 P.C. 99
 1252 2531



60

Proposed E. of St. Plan No. 1 Clara St., L.A. Co. Rd. Dept.