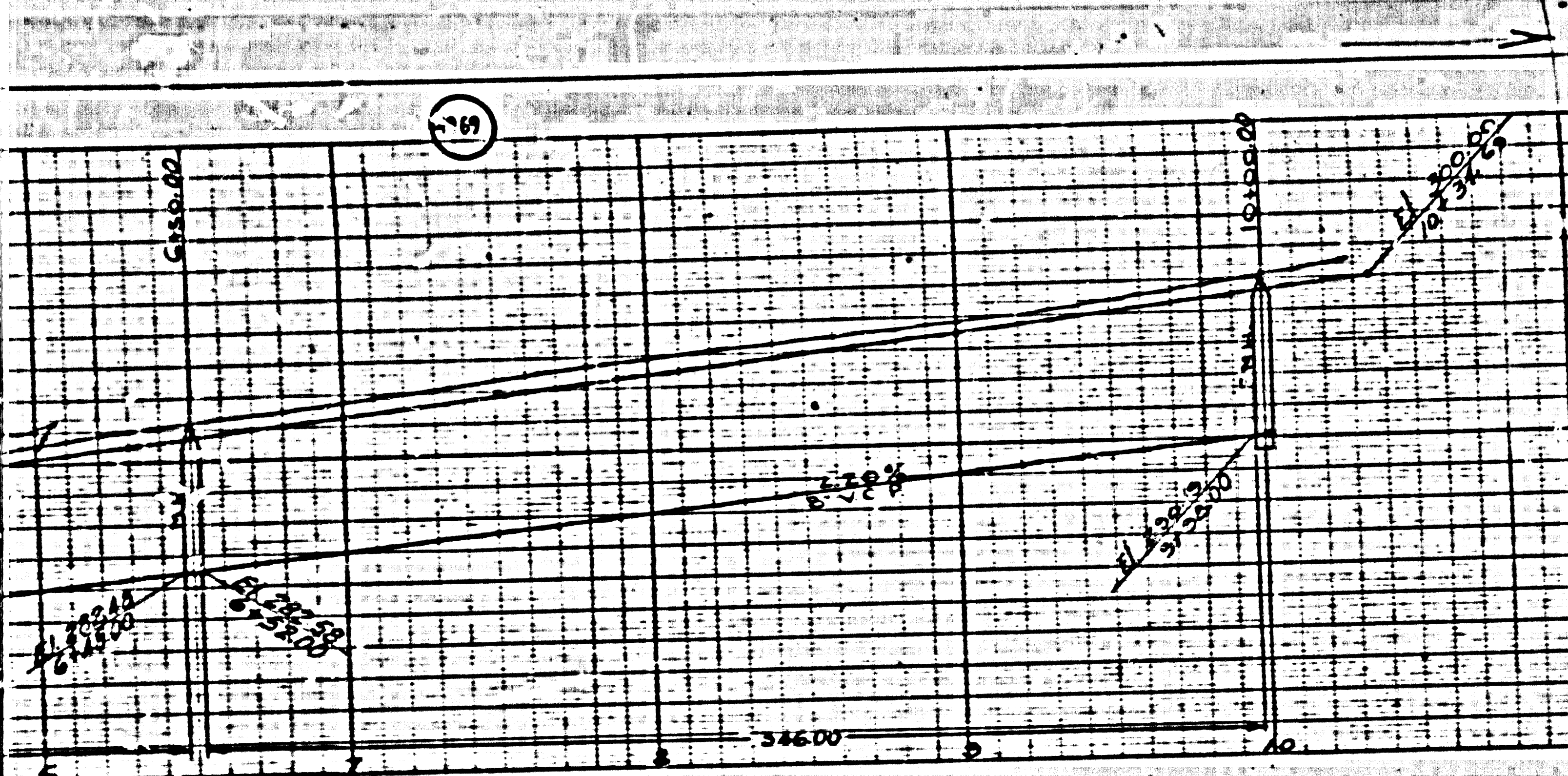


15



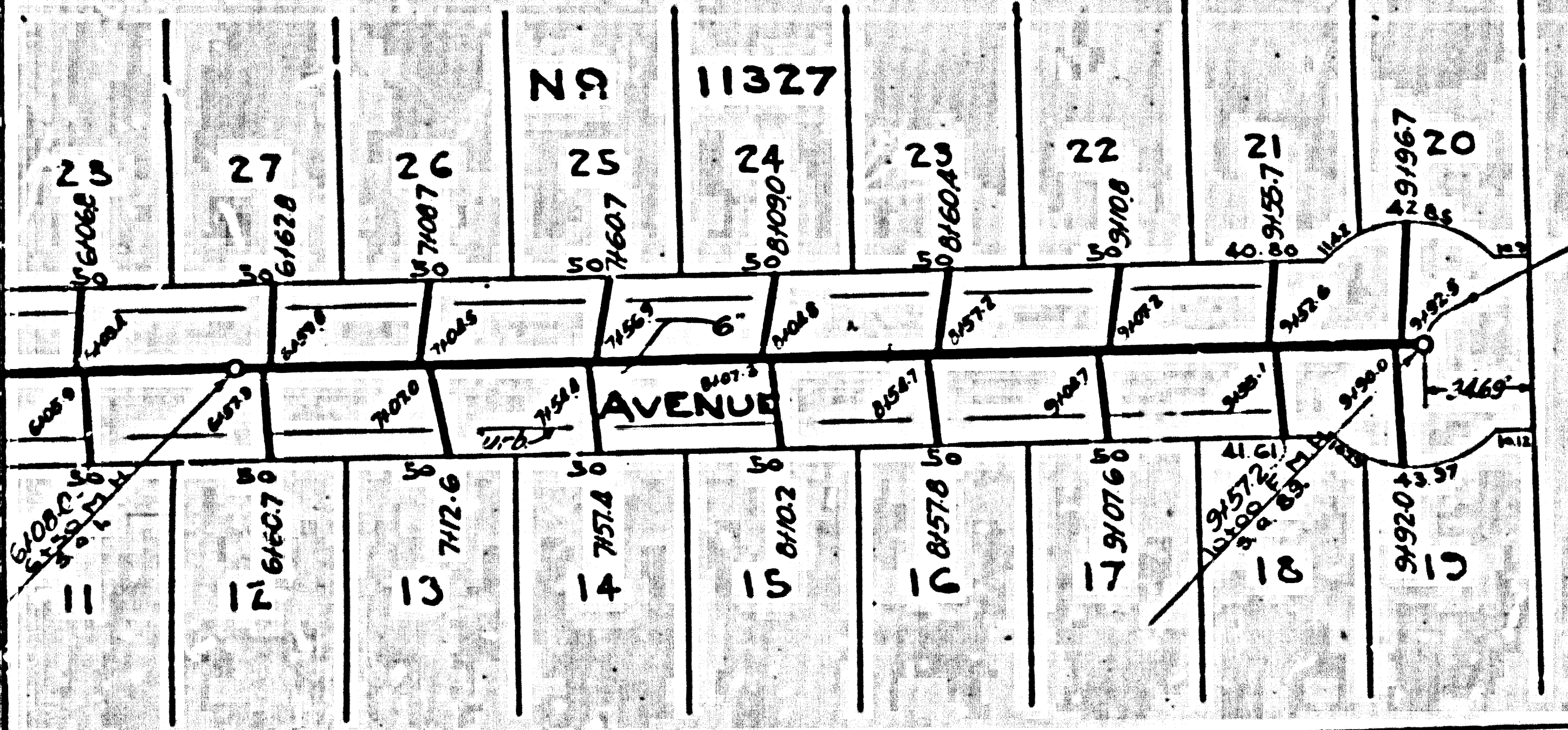
DOUBLE SCALE.

- USE SEWER JOINT COMPOUND FOR ALL PIPE JOINTS.
- USE "JUST-RITE" MANHOLE FRAMES AND COVERS.
- USE STANDARD STRENGTH PIPE.
- RESURFACE TRENCH WITHIN PAVED AREA TO MATCH EXISTING PAVING.
- CONSTRUCT HOUSE CONNECTIONS AS SHOWN.

PROFILE ALIGNMENT AND GRADE OF SANITARY SEWERS TO BE CONSTRUCTED IN GREENACRES AVENUE FROM SANTA MONICA BLVD. 1000 FT NORTH

ONE SHEET OCT 1935

PREPARED BY R. K. EARLE
REG. ENG. 5051 *Arthur K. Earle*



Extend 3/4" red brass pipe to water from S. side

FOR LEGEND

NOTE:
GRADES TO WHICH THIS IMPROVEMENT IS TO BE CONSTRUCTED ARE SHOWN ON PLANS AND PROFILE GRADE POINTS FOR TOP OF CURB, CENTER LINE OF STREET OR CENTER LINE OF ALLEY ARE SHOWN BY CIRCLES ON PROFILES. AT ALL POINTS BETWEEN DESIGNATED POINTS THE GRADE SHALL BE ESTABLISHED SO AS TO CONFORM TO A STRAIGHT LINE DRAWN BETWEEN SAID DESIGNATED POINTS. ELEVATIONS ARE IN FEET ABOVE U. S. S. DATUM OR MEAN SEA LEVEL.

THIS DRAWING AND THE DATA HEREON ARE HEREBY MADE A PART OF THE SPECIFICATIONS UNDER WHICH THIS IMPROVEMENT IS TO BE CONSTRUCTED. THE CONTRACTOR SHALL BE RESPONSIBLE FOR THE PRESENCE OF THE COUNTY ENGINEER, COUNTY ENGINEER AND SHALL BE PROSECUTED ONLY IN THE PRESENCE OF THE COUNTY ENGINEER IN CALIF. STATE HIGHWAY DEPT. BEFORE WORK IS STARTED.

BEFORE WORK IS STARTED, CONTRACTOR MUST MAKE ARRANGEMENTS WITH THE COUNTY ENGINEER TO HAVE AN INSPECTOR ASSIGNED TO THE WORK AND MUST MAKE A DEPOSIT SUFFICIENT TO COVER THE COST THEREOF.

COUNTY OF LOS ANGELES, CALIFORNIA.

APPROVED *Arthur K. Earle*
COUNTY ENGINEER

APPROVED *W. J. ...*
SUPERVISOR OF COUNTY

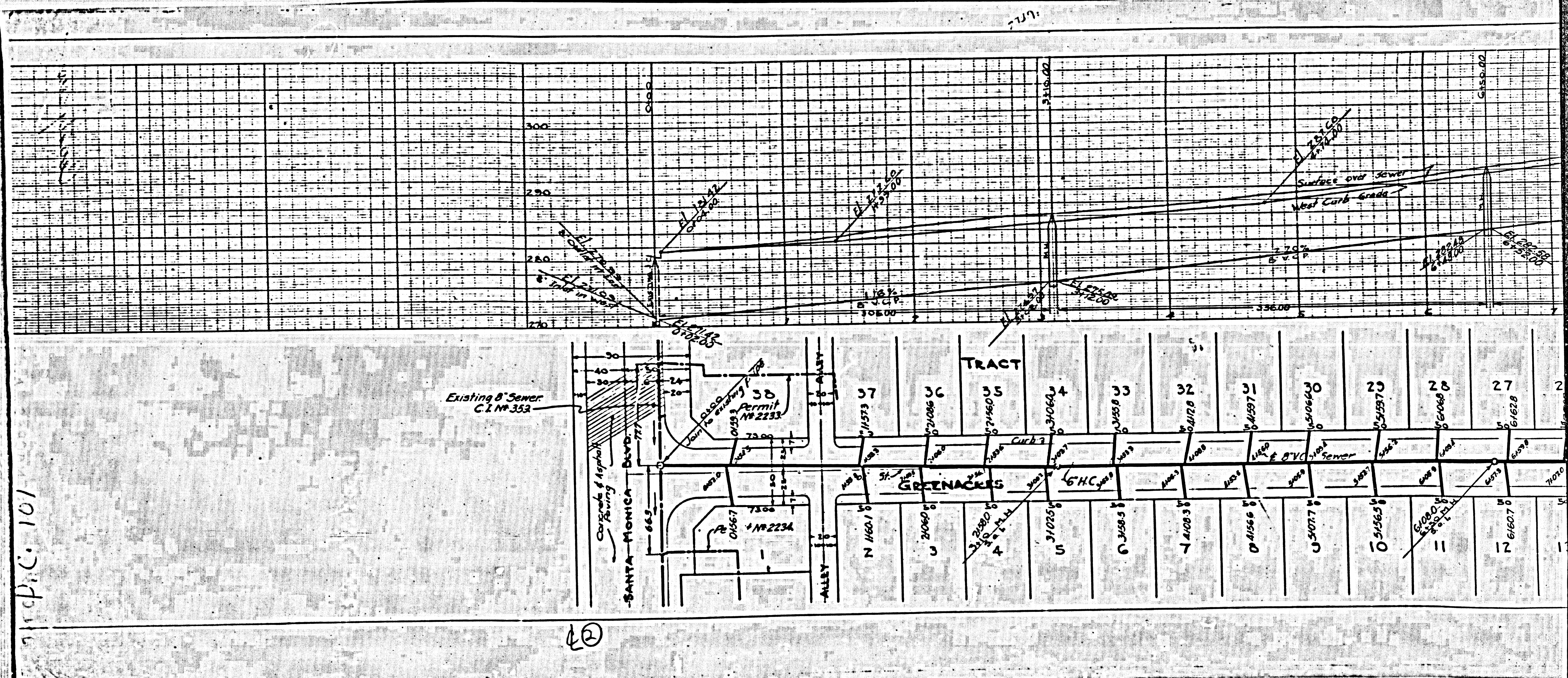
JN.6632

CHECKED BY *Arthur K. Earle* 10/11/35
R. E. 1720

BC 101

10

NS 22
A. 6. 402



PROP. C. 101

②