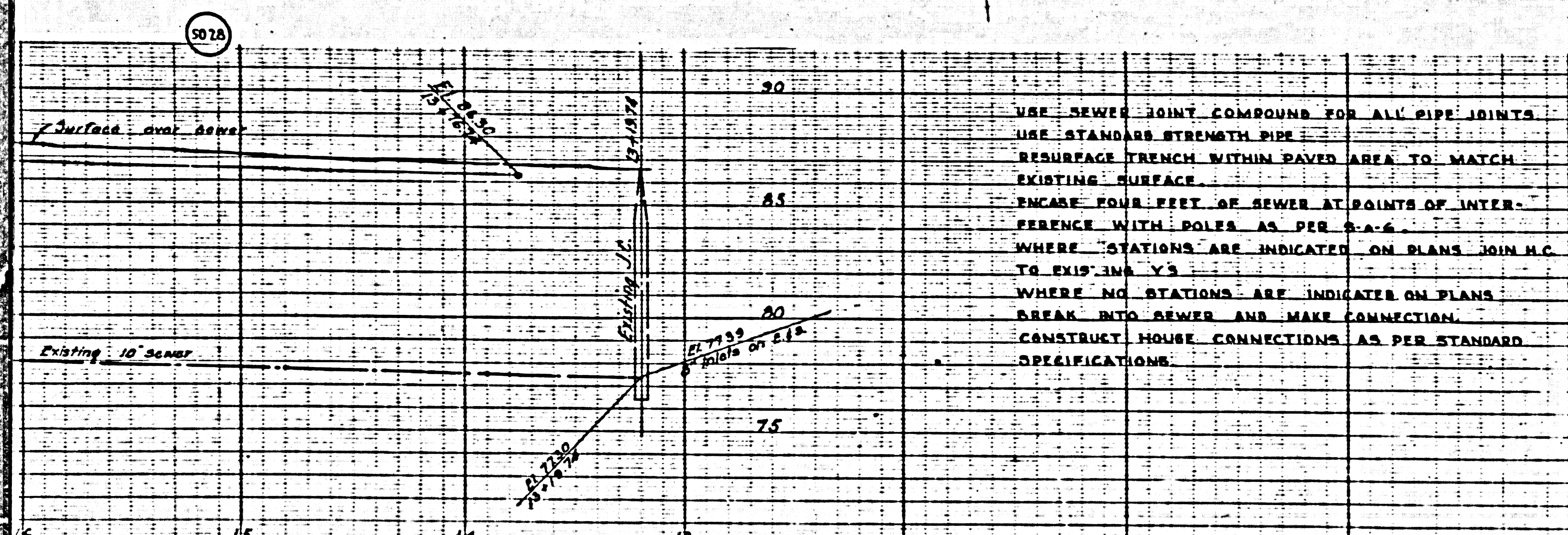


J.N. CERA
P.C. 111



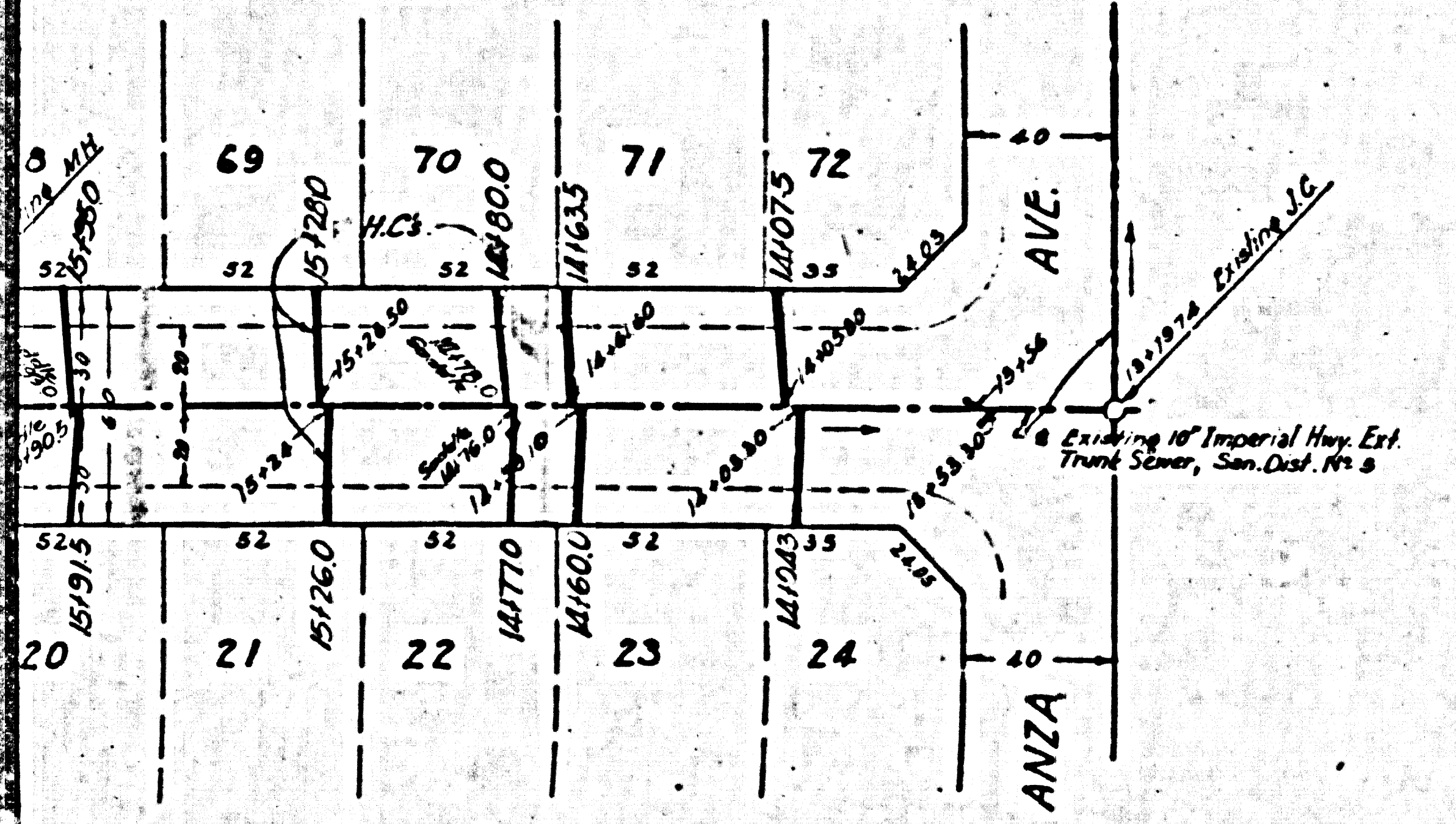
USE SEWER JOINT COMPOUND FOR ALL PIPE JOINTS
 USE STANDARD STRENGTH PIPE
 RESURFACE TRENCH WITHIN PAVED AREA TO MATCH EXISTING SURFACE
 ENCASE FOUR FEET OF SEWER AT POINTS OF INTERFERENCE WITH POLES AS PER S.A.C.
 WHERE STATIONS ARE INDICATED ON PLANS JOIN H.C. TO EXISTING VS
 WHERE NO STATIONS ARE INDICATED ON PLANS BREAK INTO SEWER AND MAKE CONNECTION
 CONSTRUCT HOUSE CONNECTIONS AS PER STANDARD SPECIFICATIONS

PROFILE ALIGNMENT AND GRADE OF
SANITARY SEWER HOUSE CONNECTIONS
 TO BE CONSTRUCTED IN
118TH STREET
 BETWEEN ISIS AVE. AND ANZA AVE.

ONE SHEET
 SCALE VERT 1"=4'
 HORIZ 1"=40'
 JULY 17 1940

PREPARED BY
 FRED E. LANGE
 CIVIL ENGINEER

REG. CE. NO. 3562



FOR LEGEND
 SEE PLAN NO. S-A-64

NOTE:
 GRADES TO WHICH THIS IMPROVEMENT IS TO BE CONSTRUCTED ARE SHOWN ON PLANS AND PROFILE. GRADE POINTS FOR TOP OF CURB, CENTER LINE OF STREET OR CENTER LINE OF ALLEY ARE SHOWN BY CIRCLES ON PROFILES. AT ALL POINTS BETWEEN DESIGNATED POINTS THE GRADE SHALL BE ESTABLISHED SO AS TO CONFORM TO A STRAIGHT LINE DRAWN BETWEEN SAID DESIGNATED POINTS.
 ELEVATIONS ARE IN FEET ABOVE U.S.G.S. DATUM OR MEAN SEA LEVEL.
 THIS DRAWING AND THE DATA HEREON ARE HEREBY MADE A PART OF THE SPECIFICATIONS. WORK SHALL BE CONSTRUCTED ACCORDING TO SPECIFICATIONS ON FILE IN THE OFFICE OF THE COUNTY ENGINEER AND SHALL BE PROSECUTED ONLY IN THE PRESENCE OF THE COUNTY ENGINEER.
 A PERMIT TO EXCAVATE IN THE STREET MUST BE SECURED FROM THE COUNTY ROAD DEPARTMENT BEFORE WORK IS STARTED.
 BEFORE WORK IS STARTED CONTRACTOR MUST MAKE ARRANGEMENTS WITH THE COUNTY ENGINEER TO HAVE AN INSPECTOR ASSIGNED TO THE WORK AND MUST MAKE A DEPOSIT SUFFICIENT TO COVER THE COST THEREOF.

COUNTY OF LOS ANGELES, CALIFORNIA
 APPROVED *Alfred Jones*
 APPROVED *Arthur*
 CHECKED BY *Carl*
 OFFICE OF COUNTY ENGINEER, July 17-40

bc 111

