

5006
 S.M. No. 139. El. 66.418
 Maple Ave. & Clark Ave. S.E. Cor.
 St. 50' in So curb, 60' E. & Clark

P.C. 116
 PROFILE ALIGNMENT AND GRADE OF
SANITARY SEWERS
 TO BE CONSTRUCTED IN
TRACT NO 12477
BELLFLOWER CALIFORNIA

- USE SEWER JOINT COMPOUND FOR ALL PIPE JOINTS EXCEPT WHEN WATER ENCOUNTERED DURING CONSTRUCTION MAKES USE OF WESTON GASKETS IMPERATIVE
- USE JUST-RITE MANHOLE FRAMES AND COVERS OR USE 'D & D' SAFETY AND NOISELESS' MANHOLE FRAMES AND COVERS
- USE STANDARD STRENGTH PIPE
- RESURFACE ALL TRENCH WITHIN PAVED AREA TO MATCH EXISTING PAVEMENT

ONE SHEET
 December 4, 1940
 PREPARED IN THE OFFICES OF
F. B. HOWES

SCALE VERT. 1" = 4'
 HOR. 1" = 40'

BY F. B. Howes REG. C.E. NO 2913

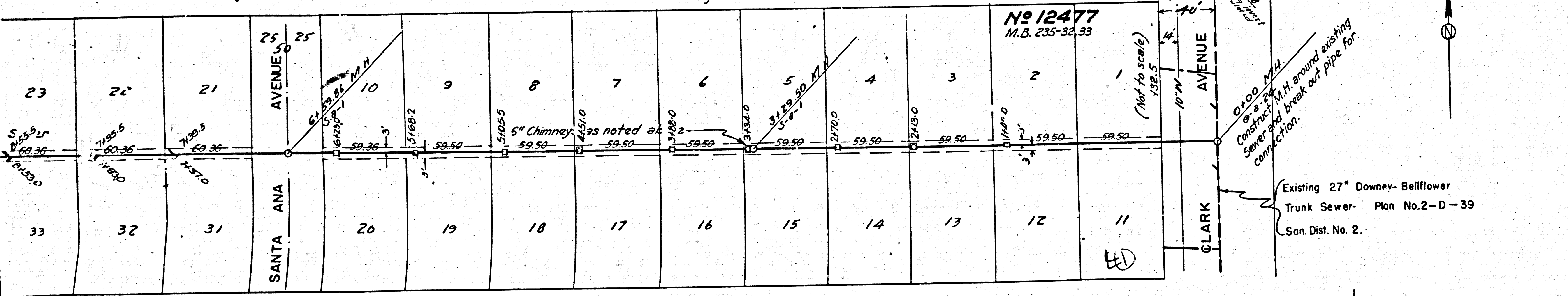
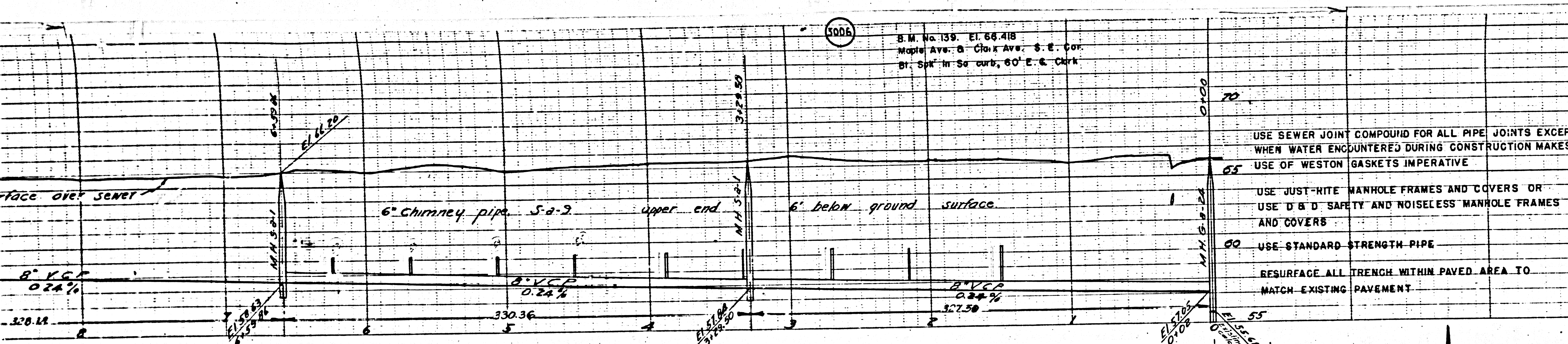
FOR LEGEND
 SEE PLAN NO. 9-264

NOTE
 GRADES TO WHICH THIS IMPROVEMENT IS TO BE CONSTRUCTED ARE SHOWN ON PLANS AND PROFILE. GRADE POINTS FOR TOP OF CURB, CENTER LINE OF STREETS OR CENTER LINE OF ALLEY ARE SHOWN BY CIRCLES ON PROFILES. AT ALL POINTS BETWEEN DESIGNATED POINTS THE GRADE SHALL BE ESTABLISHED SO AS TO CONFORM TO A STRAIGHT LINE DRAWN BETWEEN SAID DESIGNATED POINTS.
 ELEVATIONS ARE IN FEET ABOVE U. S. S. DATUM OR MEAN SEA LEVEL.
 THIS DRAWING AND THE DATA HEREON ARE HEREBY MADE A PART OF THE SPECIFICATIONS.
 WORK SHALL BE CONSTRUCTED ACCORDING TO SPECIFICATIONS ON FILE IN THE OFFICE OF THE COUNTY ENGINEER AND SHALL BE PROSECUTED ONLY IN THE PRESENCE OF THE COUNTY ENGINEER. A PERMIT TO EXCAVATE IN THE STREET MUST BE SECURED FROM THE COUNTY ROAD DEPT BEFORE WORK IS STARTED. CONTRACTOR MUST MAKE ARRANGEMENTS WITH THE COUNTY ENGINEER TO HAVE AN INSPECTOR ASSIGNED TO THE WORK AND MUST MAKE A DEPOSIT SUFFICIENT TO COVER THE COST THEREOF.

COUNTY OF LOS ANGELES, CALIFORNIA.

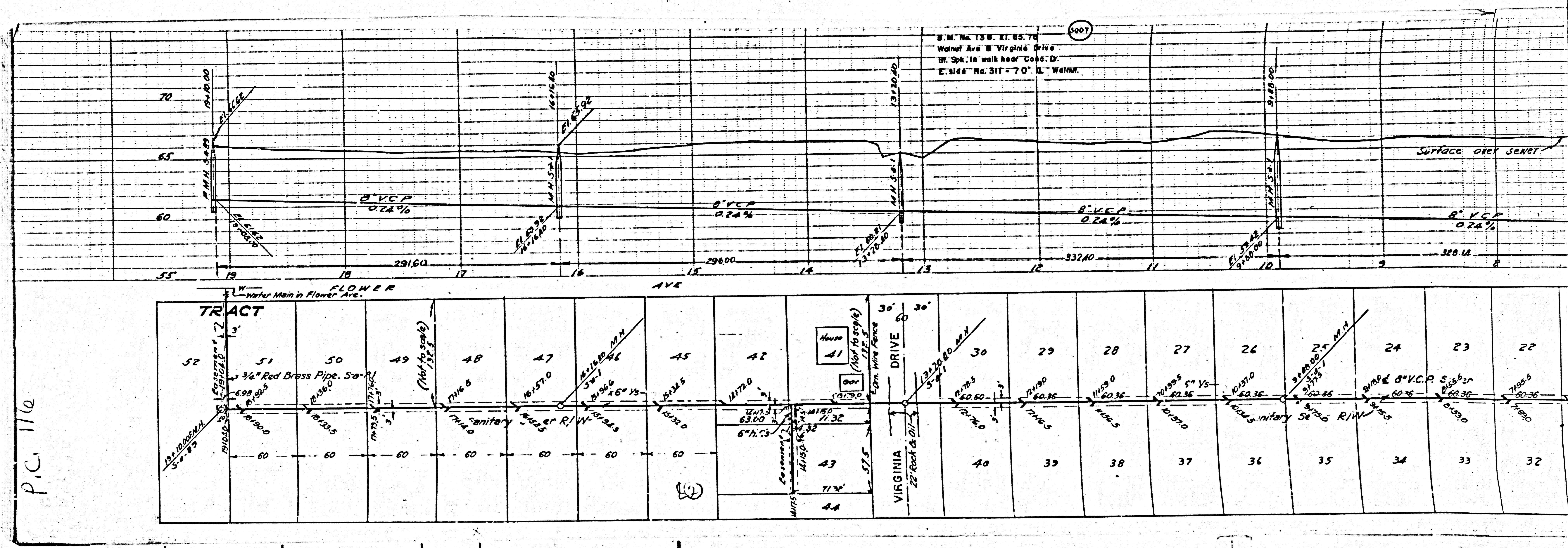
APPROVED Alfred J. Jones
 COUNTY ENGINEER
 APPROVED C. R. Compton
 ASST. CHIEF ENGINEER COUNTY
 SANITATION DISTRICT NO. 2

CHECKED BY Arthur J. Pickett R.E. NO 1720
 OFFICE OF COUNTY ENGINEER



Existing 27" Downey-Bellflower
 Trunk Sewer- Plan No. 2-D-39
 San. Dist. No. 2.

No 12477
 M.B. 235-32,33



P.C. 116

5007
 B.M. No. 136. E. 65.76
 Walnut Ave @ Virginia Drive
 Bl. Sp. 16' walk near Cold. D.
 E. side No. 511 - 70' B. Walnut.