

USE "JUST-RITE" MANHOLE FRAMES AND COVERS OR "D.A.D." SAFETY AND NOISELESS MANHOLE FRAMES AND COVERS.
 USE STANDARD STRENGTH PIPE EXCEPT AS NOTED.
 RESURFACE ALL TRENCH-IMPACT-PAVED AREA WITH PREMIX ROCK AND OIL 4" THICK EXCEPT AS NOTED.
 CONSTRUCT HOUSE CONNECTIONS AS PER STANDARD SPECIFICATIONS WITH INVERTS AT R.L.'S. BELOW CURB GRADE EXCEPT AS NOTED.

ALL FLUSHING MANHOLES TO BE CONNECTED TO WATER MAIN WITH 3/4" RED BRASS PIPE AS PER S-2-32.

BENCH MARK:
 L.A.M.C. Rod N.E. Cor. Washington St. & Harbor View Ave. No. 10A L.B. 555-106 E.I. 29.143

PROFILE ALIGNMENT & GRADE OF
SANITARY SEWERS
 TO BE CONSTRUCTED IN
HARBOR VIEW AVE FROM WASHINGTON ST TO CARSON ST
RIGHT OF WAY FROM CARSON ST TO EMBASSY AVE
EMBASSY AVE FROM 218TH ST TO 220TH ST
218TH PLACE FROM CARLERIK AVE TO EMBASSY AVE

PRIVATE CONTRACT NO. 128
 W.S. 30
 SHEET ONE OF FOUR SHEETS
 SCALE VERT. 1"=4'
 HORIZ. 1"=40'
 APRIL 1941
 PREPARED IN THE OFFICES OF
 THOS. S. SARGENT & SONS 1268
Thos. S. Sargent

FOR LEGEND
 SEE PLAN NO. S-2-34

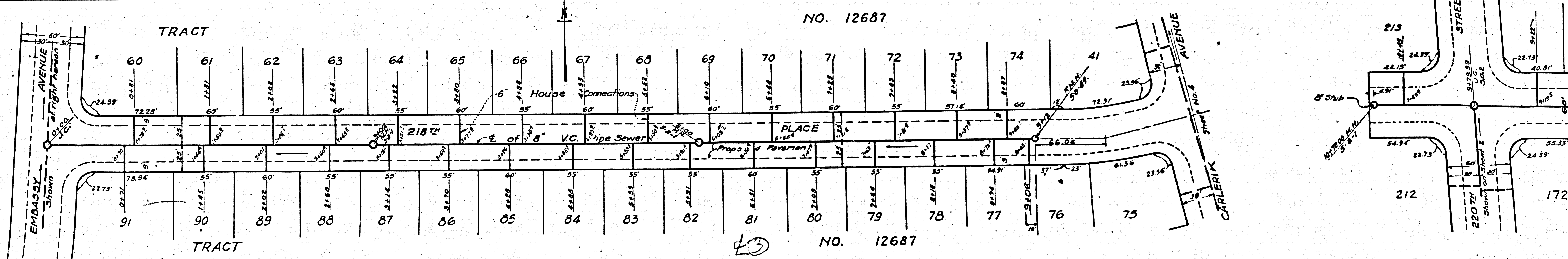
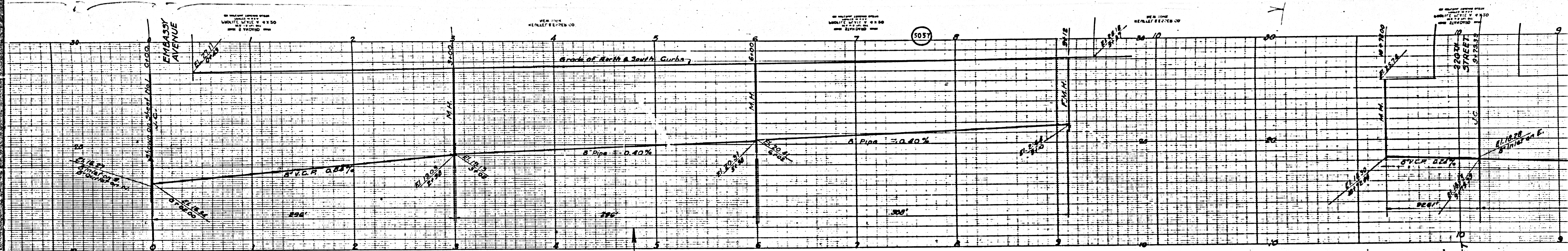
NOTE:
 GRADES TO WHICH THIS IMPROVEMENT IS TO BE CONSTRUCTED ARE SHOWN ON PLANS AND PROFILE GRADE PRINTS FOR TOP OF CURB, CENTER LINE OF STREET OR CENTER LINE OF ALLEY ARE SHOWN BY CIRCLES ON PROFILES. AT ALL POINTS BETWEEN DESIGNATED POINTS THE GRADE SHALL BE ESTABLISHED BY AS TO COMPARE TO A STRAIGHT LINE DRAWN BETWEEN SAID DESIGNATED POINTS.
 ELEVATIONS ARE IN FEET ABOVE U. S. S. DATUM OF MEAN SEA LEVEL.
 THIS DRAWING AND THE DATA HEREON ARE HEREBY MADE A PART OF THE SPECIFICATIONS.
 WORK SHALL BE CONSTRUCTED ACCORDING TO SPECIFICATIONS ON FILE IN THE OFFICE OF THE COUNTY ENGINEER AND SHALL BE PROSECUTED ONLY IN THE PRESENCE OF THE COUNTY ENGINEER.
 A PERMIT TO EXCAVATE IN THE STREET MUST BE SECURED FROM THE COUNTY ROAD DEPT. BEFORE WORK IS STARTED.
 BEFORE WORK IS STARTED, CONTRACTOR MUST MAKE ARRANGEMENTS WITH THE COUNTY ENGINEER TO HAVE AN INSPECTOR ASSIGNED TO THE WORK AND MUST MAKE A DEPOSIT SUFFICIENT TO COVER THE COST OF INSPECTION AND PREPARATION OF RECORD PLANS.
 COUNTY OF LOS ANGELES, CALIFORNIA.

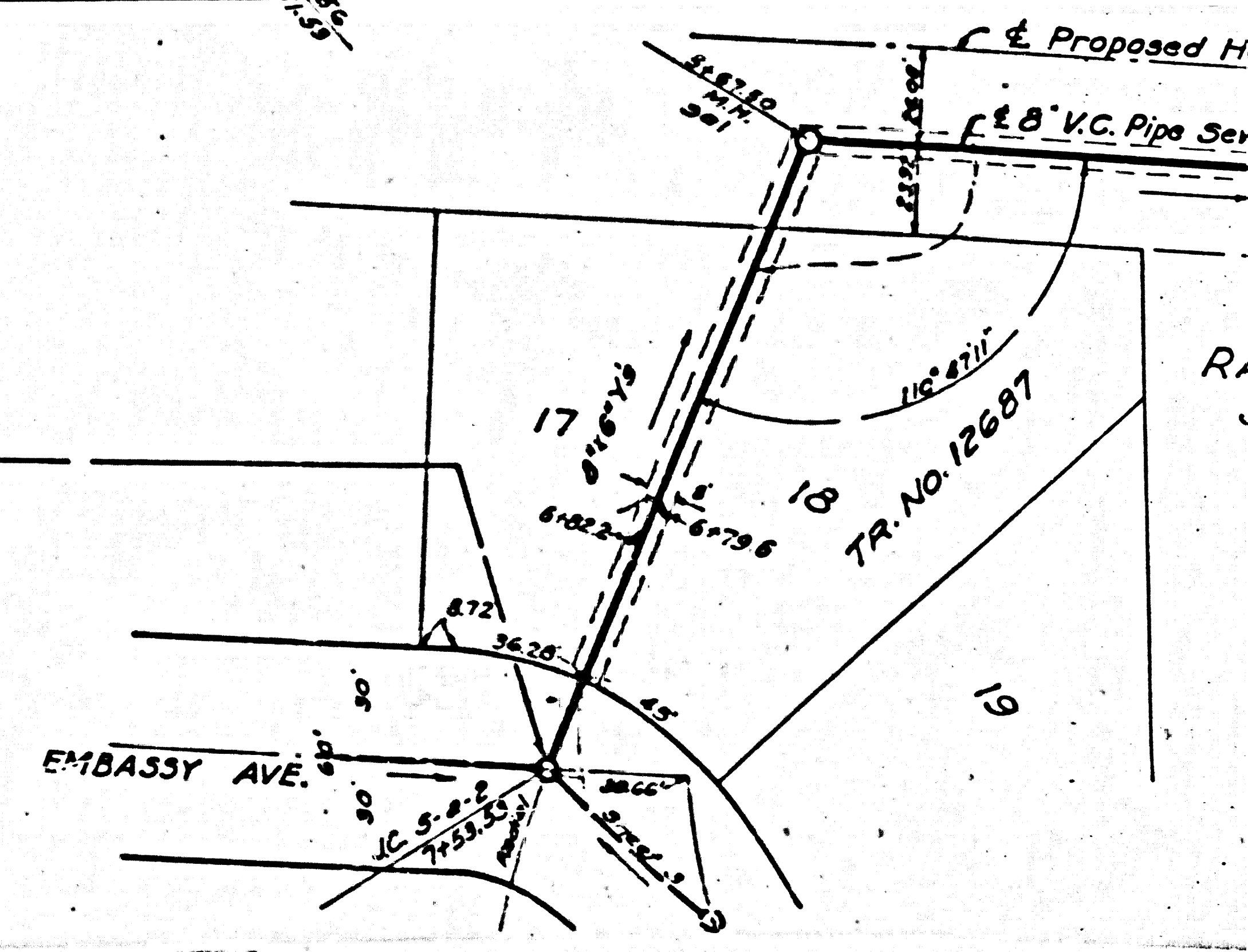
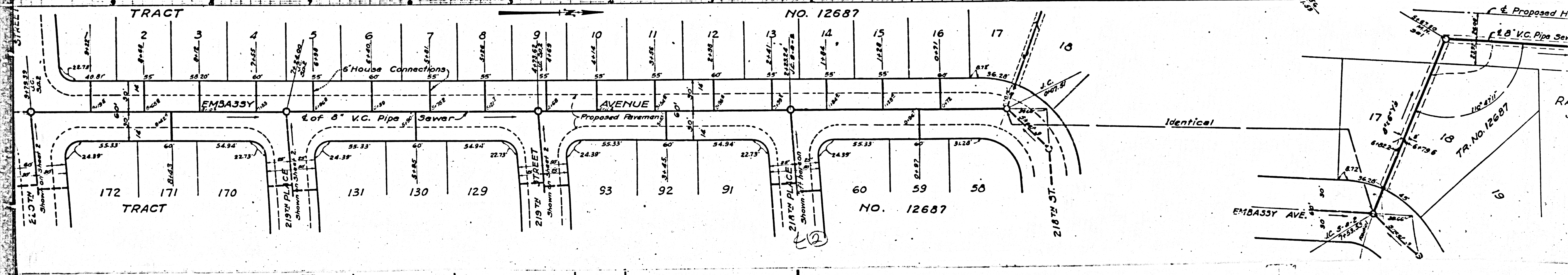
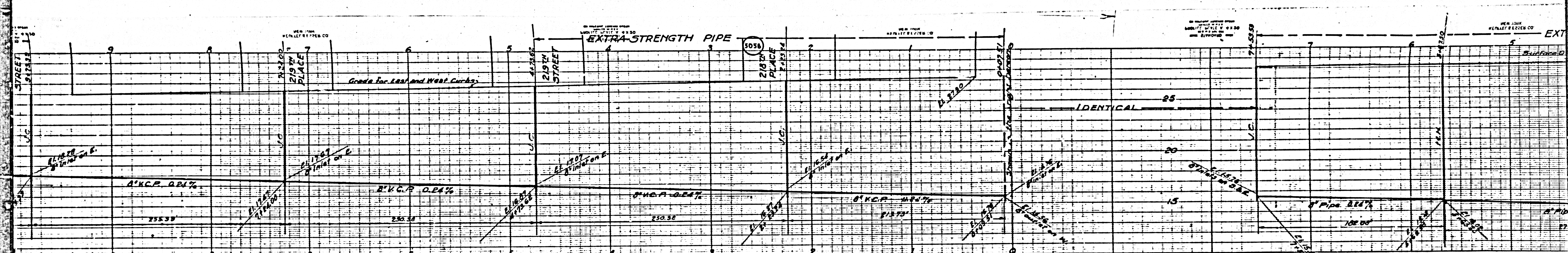
APPROVED *Alfred J. ...*
 COUNTY ENGINEER
 APPROVED *C. L. Compton*
 AT THE OFFICE OF THE COUNTY ENGINEER
 SUBSTITUTION SHEET NO. 2
 CHECKED *Paul E. ...* MAY 1, 1941
 OFFICE OF COUNTY ENGINEER
 2274668

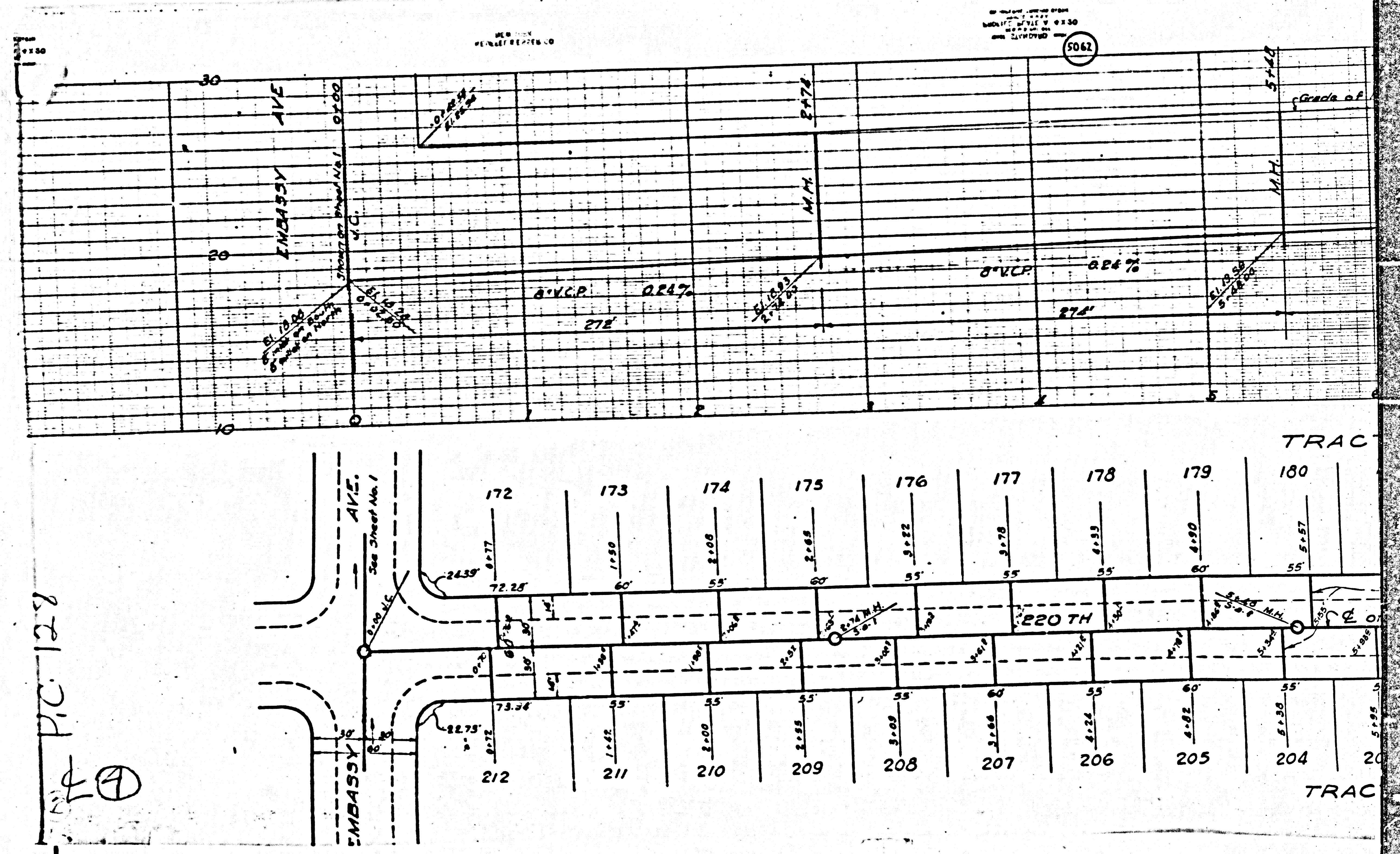
BOSTON

1

20

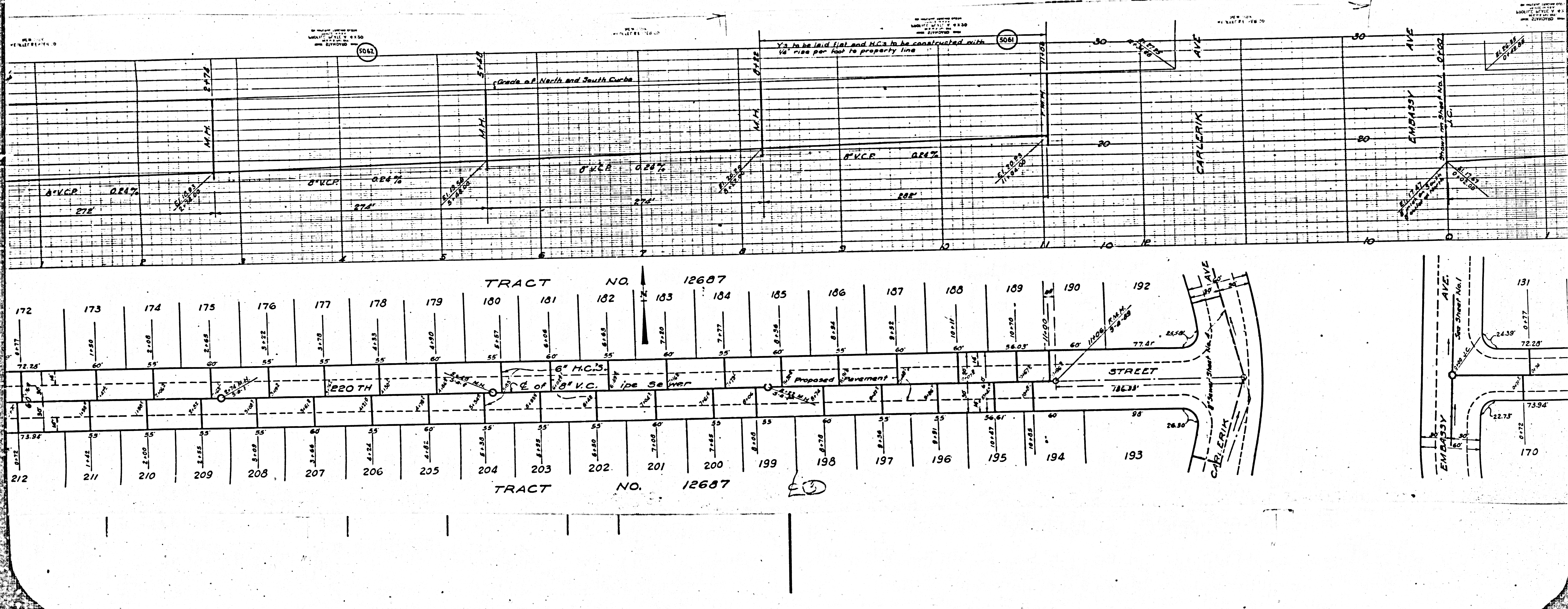






PIC. 127

①



SEE PLAN SHEET NO. 219

SEE PLAN SHEET NO. 219

SEE PLAN SHEET NO. 219

SEE PLAN SHEET NO. 219

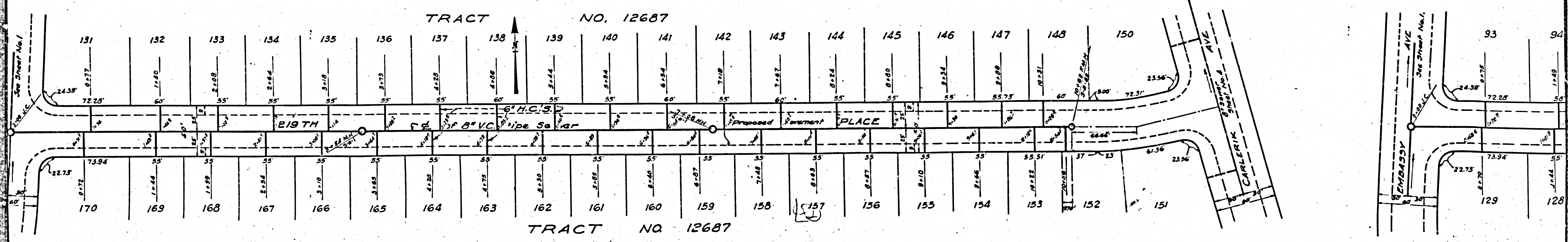
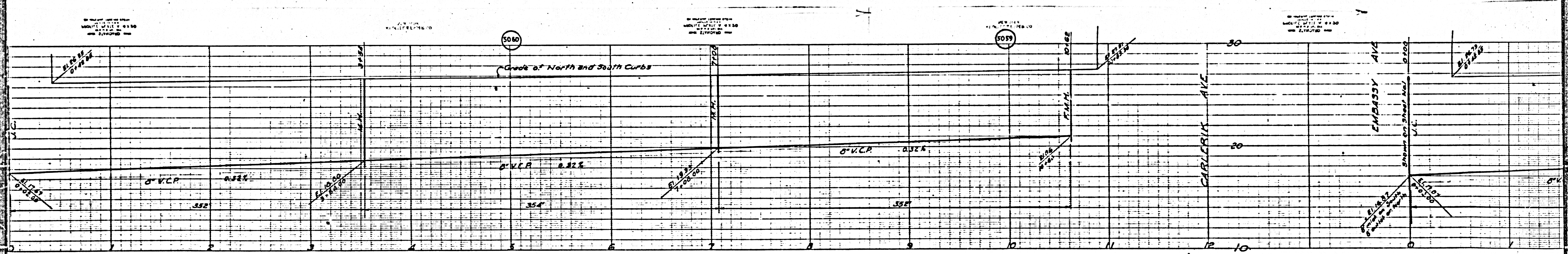
SEE PLAN SHEET NO. 219

SEE PLAN SHEET NO. 219

TRACT NO. 12687

TRACT NO. 12687

213



BY THE CITY ENGINEER
APPROVED MAY 11 1941
RE 12687

PER THE
CITY ENGINEER
APPROVED MAY 11 1941
RE 12687

BY THE CITY ENGINEER
APPROVED MAY 11 1941
RE 12687

BY THE CITY ENGINEER
APPROVED MAY 11 1941
RE 12687

PROFILE ALIGNMENT & GRADE OF
SANITARY SEWERS
TO BE CONSTRUCTED IN

- 219TH STREET FROM CARLERIK AVE TO EMBASSY AVE
- 219TH PLACE FROM CARLERIK AVE TO EMBASSY AVE
- 220TH STREET FROM CARLERIK AVE TO EMBASSY AVE

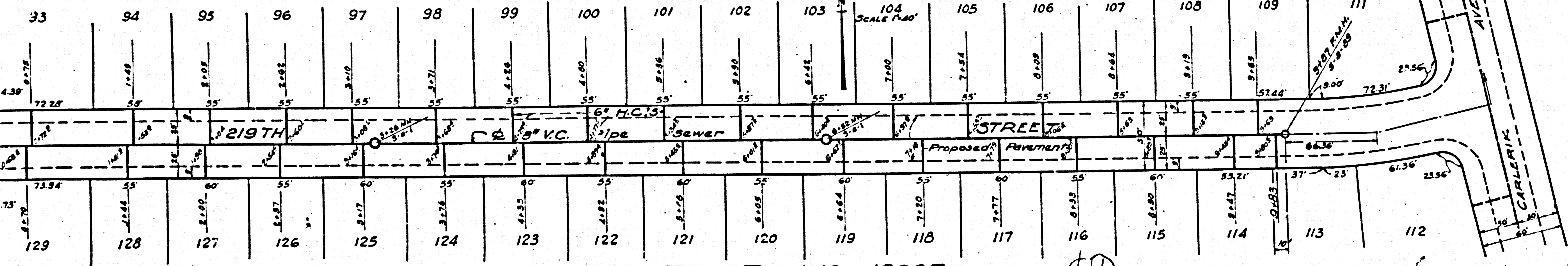
SCALE VERT. 1" = 8' HORIZ. 1" = 80'

SHEET TWO OF FOUR SHEETS

FOR ALL CONSTRUCTION NOTES SEE SHEET ONE
FOR LEGEND SEE SHEET ONE

PREPARED IN THE OFFICE OF THOS. B. SARGENT RE 12687
Thos. B. Sargent

TRACT NO. 12687

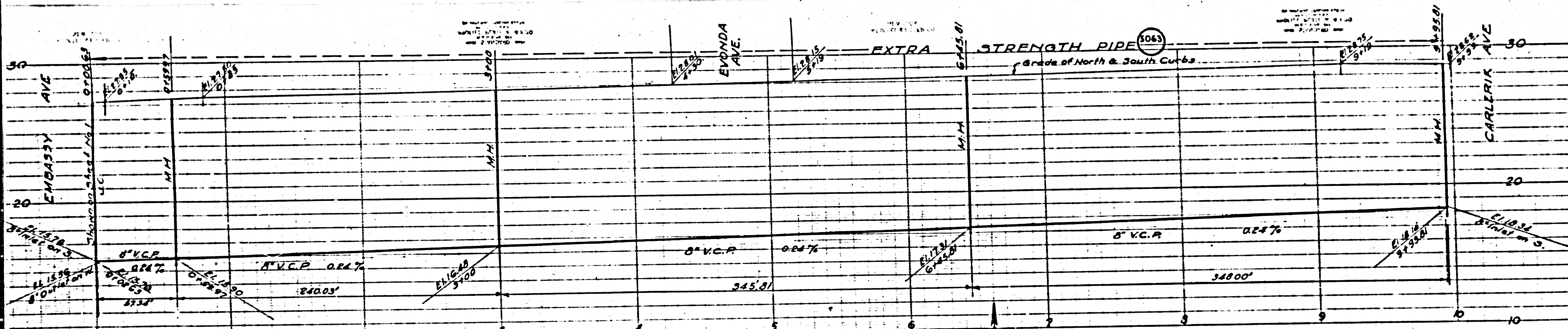


COUNTY OF LOS ANGELES, CALIFORNIA.

APPROVED *Alfred J. Davis*
CITY ENGINEER

APPROVED *P. B. Compton*
ALTERNATE CITY ENGINEER

CHECKED BY *Paul E. King* MAY 11 1941
RE 12687



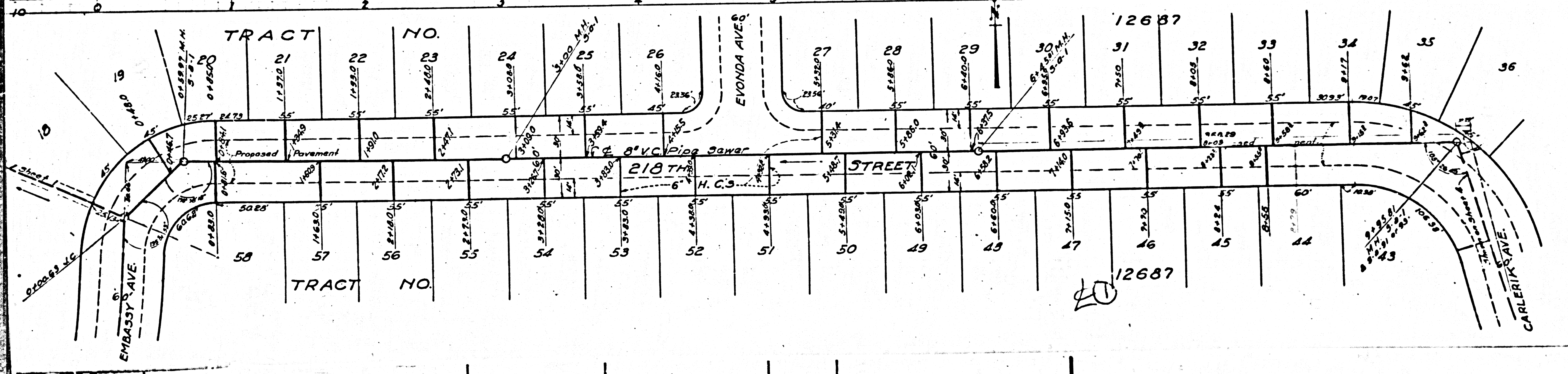
PROFILE ALIGNMENT & GRADE OF
SANITARY SEWER
 TO BE CONSTRUCTED IN
218TH STREET FROM CARLERIK AVE TO EMBASSY AVE.

SCALE VERT. 1"=4' HORIZ. 1"=40'

SHEET THREE OF FOUR SHEETS

FOR ALL CONSTRUCTION NOTES SEE SHEET ONE
 FOR LEGEND SEE SHEET ONE

PREPARED IN THE OFFICE OF THOS. B. SARGENT, R.E. 1268
Thos. B. Sargent

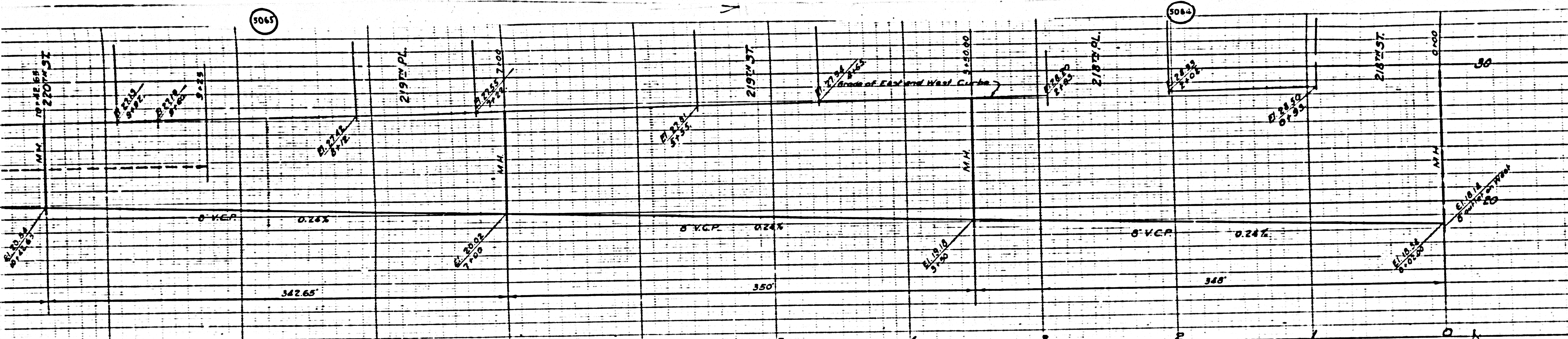


COUNTY OF LOS ANGELES, CALIFORNIA

APPROVED *Alfred J. ...*
 COUNTY ENGINEER

APPROVED *C. R. ...*
 ACTING CHIEF ENGINEER OF COUNTY
 SANITATION DISTRICT NO. 8

CHECKED BY *Paul E. ...* JULY 1, 1941
 OFFICE OF COUNTY ENGINEER
 126 E. 4th St.

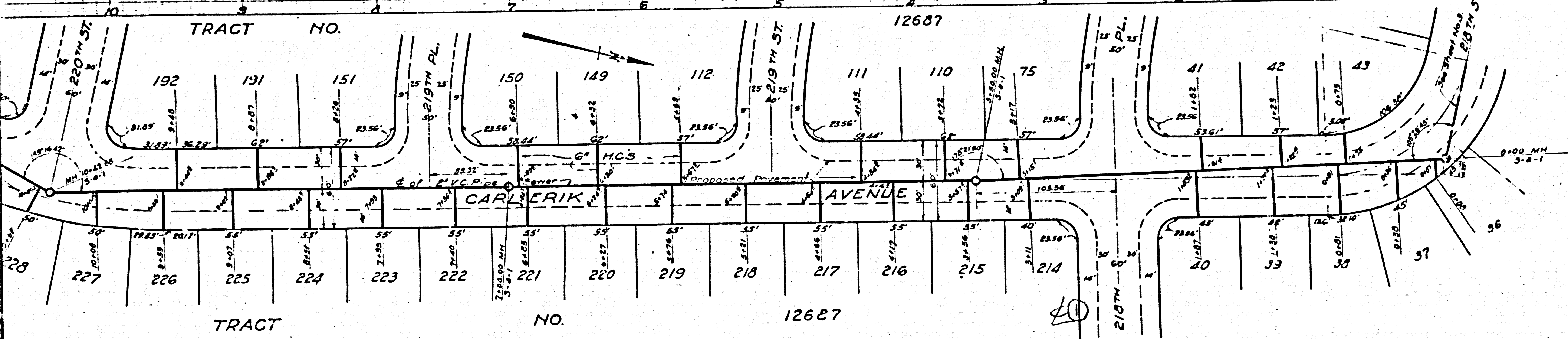


PROFILE ALIGNMENT & GRADE OF
SANITARY SEWER
 TO BE CONSTRUCTED IN
CARLERIK AVE. FROM 218TH ST. TO 220TH ST.

SHEET FOUR OF FOUR SHEETS
 SCALE VERT. 1" = 4' HORIZ. 1" = 40'

FOR ALL CONSTRUCTION NOTES SEE SHEET ONE
 FOR LEGEND SEE SHEET ONE

PREPARED IN THE OFFICE OF THOS. B. SARGENT R.E. 1266
Thos. B. Sargent



COUNTY OF LOS ANGELES, CALIFORNIA.

APPROVED *W. J. ...*
 SANITARY ENGINEER

APPROVED *C. R. ...*
 CIVIL ENGINEER

CHECKED BY *Paul ...* MAY 1, 1941.
 OFFICE OF SANITARY ENGINEER
 R. 4050