

Grades to which this improvement is to be constructed are shown on plans and profile. Elevations are in feet above U.S.S. datum or mean sea level. Work shall be constructed according to specifications on file in the office of the County Engineer and shall be prosecuted only in the presence of the County Engineer. Before starting work the Contractor shall obtain a permit from the County Engineer in accordance with Ordinance No. 1782, U.S. This drawing and the data hereon are hereby made a part of the Specifications. Use Weston's Gaskets and forms for all pipe joints. Use water-tight sewer joint compounds for all pipe joints that are not water-tight. Use "J" type or "D" type safety and standard specifications. Construct these connections in accordance with standard specifications with invert 6 feet below curb grade except as noted. All joints shall be 2" x 6" with stopper. Resurface of trench within paved area to meet L.A. County Road Dept. If permit is required in the street must be secured from the County Road Department, 126 Bldg. of Records, before work is started.

PRIVATE CONTRACT NO. 129
W.S. 26

**PROFILE ALIGNMENT AND GRADE OF
SANITARY SEWER
TO BE CONSTRUCTED IN
121 ST STREET
FROM AVALON BOULEVARD WESTERLY 518.00 FEET
CONSISTING OF ONE SHEET**

SCALE: horizontal 1" = 40'
vertical 1" = 8'

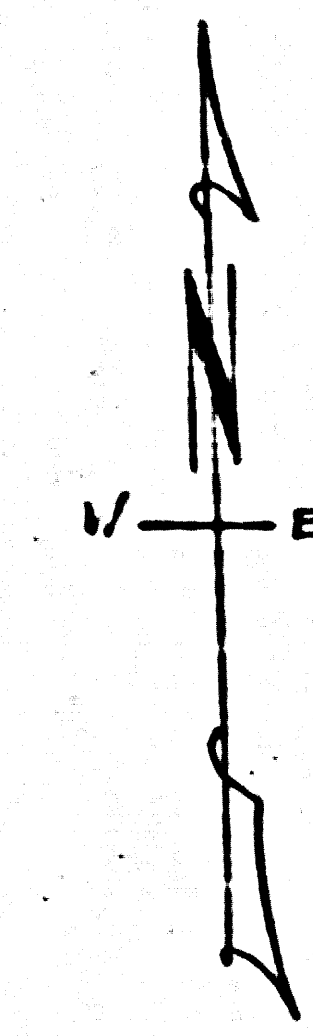
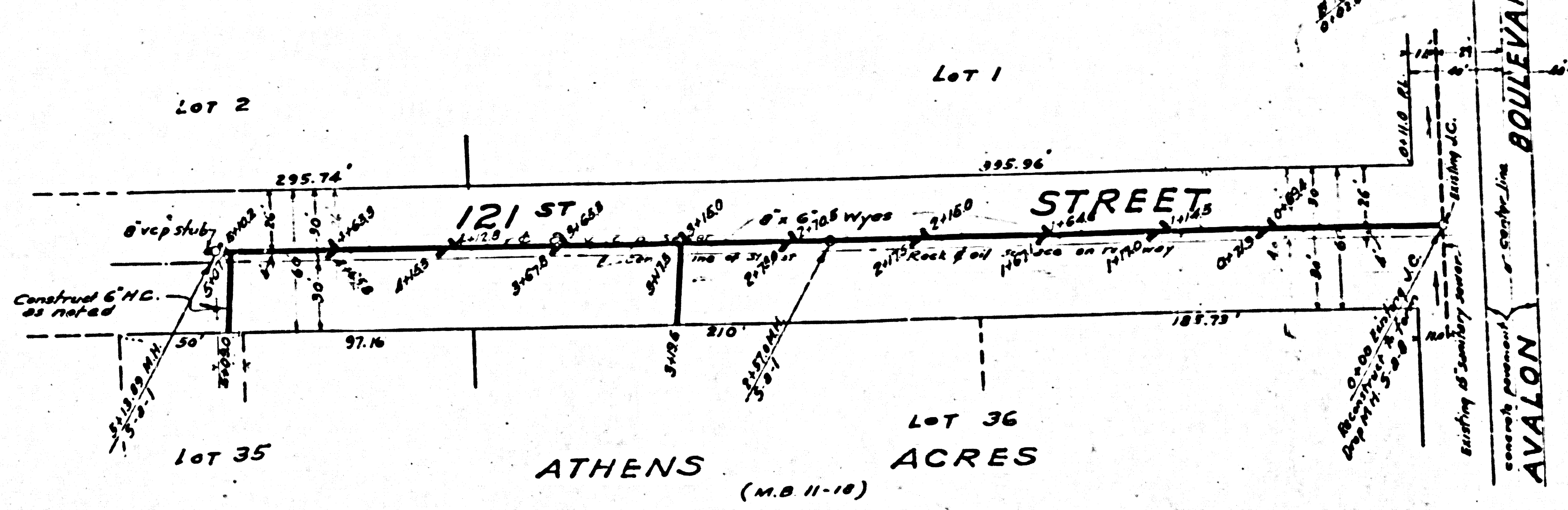
APRIL 1941

PREPARED BY GLEN ROOD
Glen Rood
Registered Engineer No. 2029

APPROVED *Alfred J. ...*
County Engineer

APPROVED *C.R. ...*
Acting Chief Engineer of County
Sanitation District No. 1

CHECKED BY *Paul E. ...* APR 2, 1941
Office of County Engineer
Reg. C.E. No. 4460



121 ST

ATHENS (M.B. 11-18)
E ①

JUN 1941