

USE D & D SAFETY AND NOISELESS MANHOLE FRAMES AND COVERS.

USE STANDARD STRENGTH PIPE

USE SEWER JOINT COMPOUND FOR ALL VITRIFIED CLAY PIPE JOINTS EXCEPT WHERE GROUND WATER ENCOUNTERED DURING CONSTRUCTION - MAKE THE USE OF WESTON'S GASKETS AND FORMS IMPERATIVE.

RESURFACE ALL TRENCH WITHIN PAVED AREA TO MEET LOS ANGELES COUNTY ROAD DEPT. OR STATE HIGHWAY REQUIREMENTS.

CONSTRUCT HOUSE CONNECTIONS WITH INVERT AT PROPERTY LINE 3 FEET BELOW CURB GRADE, EXCEPT AS NOTED.

ALL FLUSHING MANHOLES TO BE CONNECTED TO WATER MAIN WITH 4" RED BRASS PIPE AS PER S-2-61.

PROFILE ALIGNMENT AND GRADE OF
SANITARY SEWERS
 TO BE CONSTRUCTED IN
LAKEWOOD BLVD.
 BETWEEN ARTESIA AVE AND FLOWER AVE.
WALNUT AVE.
 BETWEEN LAKEWOOD BLVD AND McCALL AVE.

PRIVATE CONTRACT NO. 141
 W.S. 33
 SHEET 1 OF 3 SHEETS

PREPARED IN THE OFFICES OF
GEORGE G. BLACKMER

BY *George G. Blackmer*
 REG. C.E. NO. 4111

FOR LEGEND
 SEE PLAN NO. S-2-64

NOTE
 GRADES TO WHICH THIS IMPROVEMENT IS TO BE CONSTRUCTED ARE SHOWN ON PLANS AND PROFILE GRADE POINTS FOR TOP OF CURB CENTER LINE OF STREET OR CENTER LINE OF ALLEY ARE SHOWN BY CIRCLES ON PROFILES. AT ALL POINTS BETWEEN D. MARKED POINTS THE GRADE SHALL BE ESTABLISHED SO AS TO CONFORM TO A STRAIGHT LINE DRAWN BETWEEN SAID D. MARKED POINTS.
 ELEVATIONS ARE IN FEET ABOVE U.S.S. DATUM OR MEAN SEA LEVEL.
 THIS DRAWING AND THE DATA HEREON ARE HEREBY MADE A PART OF THE SPECIFICATIONS WORK SHALL BE CONSTRUCTED ACCORDING TO SPECIFICATIONS ON FILE IN THE OFFICE OF THE COUNTY ENGINEER AND SHALL BE PROSECUTED ONLY IN THE PRESENCE OF THE COUNTY ENGINEER.
 BEFORE WORK CAN BE STARTED THE CONTRACTOR MUST OBTAIN A PERMIT TO EXCAVATE IN COUNTY STREETS FROM THE L.A. COUNTY ROAD DEPT. FOR ALL OF PROPOSED WORK AND A PERMIT FROM THE COUNTY ENGINEER FOR WORK UNDER BRIDGES. SUFFICIENT TO COVER COST OF CONSTRUCTION INSPECTION AND RECORD PLANS.
 FOR WORK TO BE DONE IN A STATE HIGHWAY A PERMIT MUST BE OBTAINED FROM THE STATE OF CALIFORNIA, DIVISION OF HIGHWAYS, 800 STATE BUILDING AFTER MAKING DEPOSIT WITH THE COUNTY ENGINEER.
 COUNTY OF LOS ANGELES, CALIFORNIA.

APPROVED *[Signature]*
 COUNTY ENGINEER

APPROVED *[Signature]*
 DISTRICT ENGINEER

CHECKED BY *[Signature]* 1941
 OFFICE OF COUNTY ENGINEER

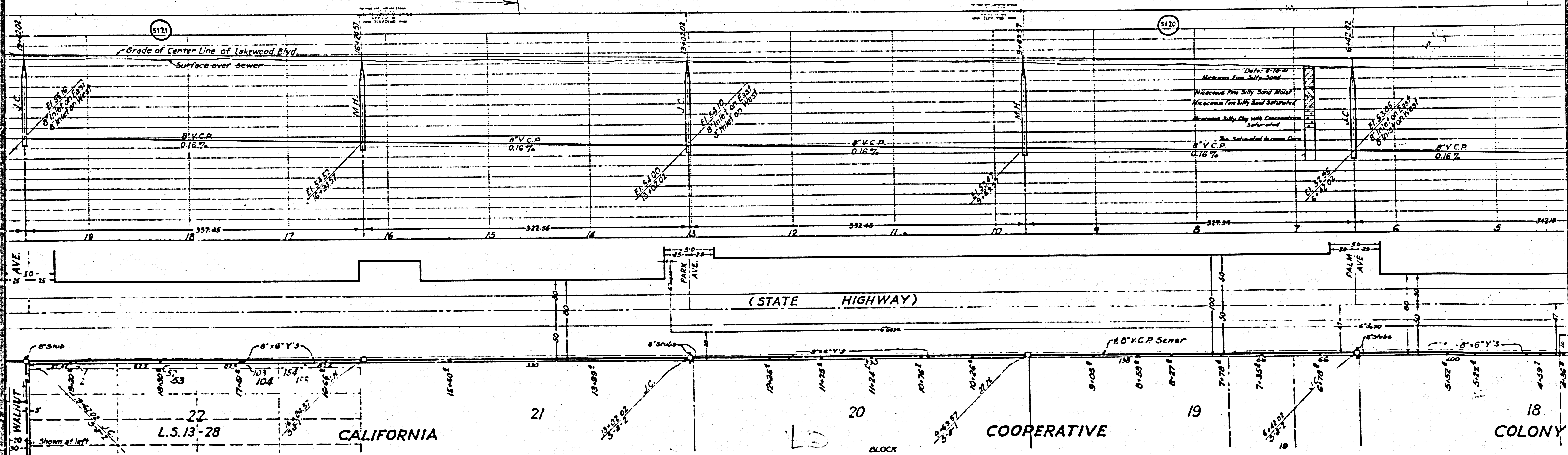
REVISION CHECKED BY *[Signature]* 1941
 OFFICE OF COUNTY ENGINEER

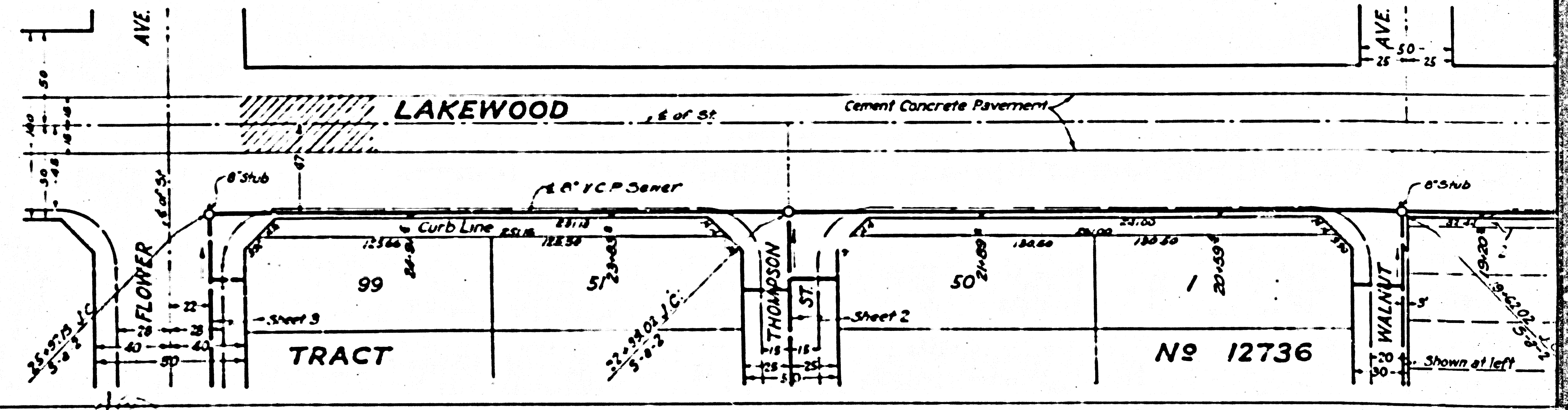
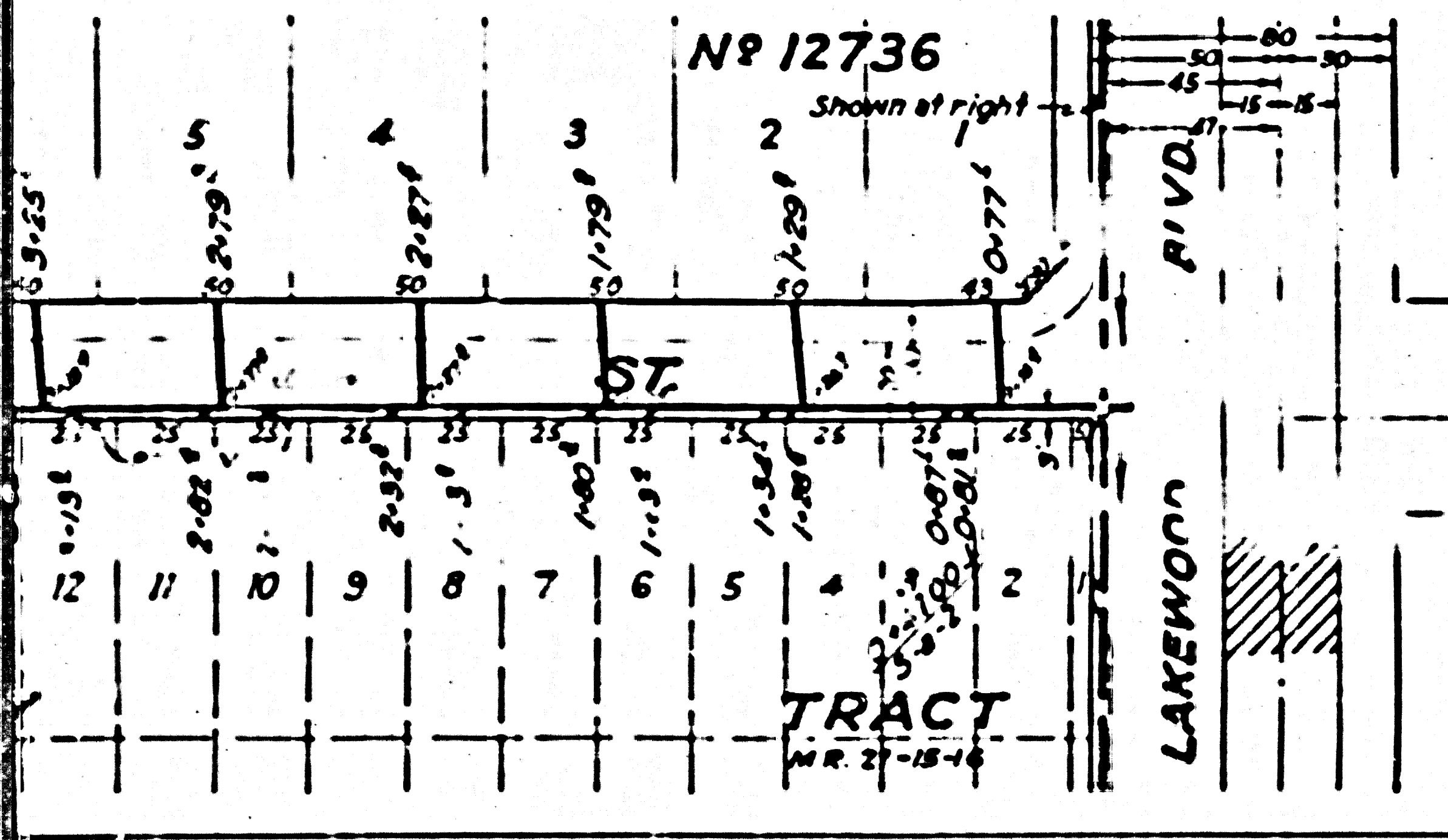
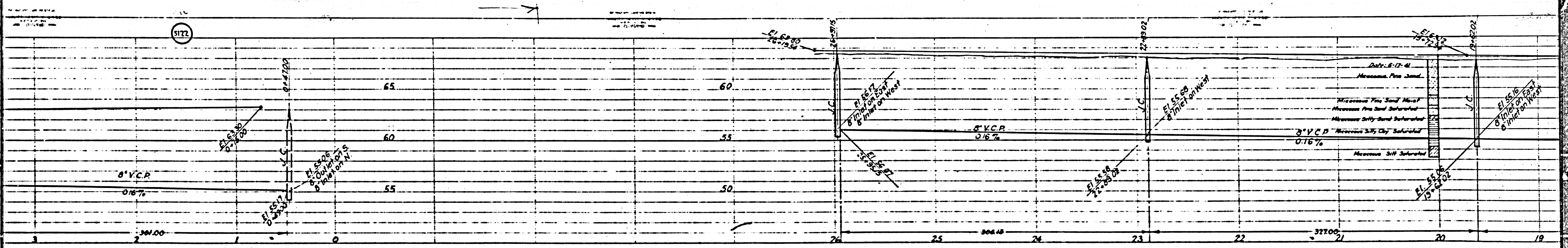
18 COLONY

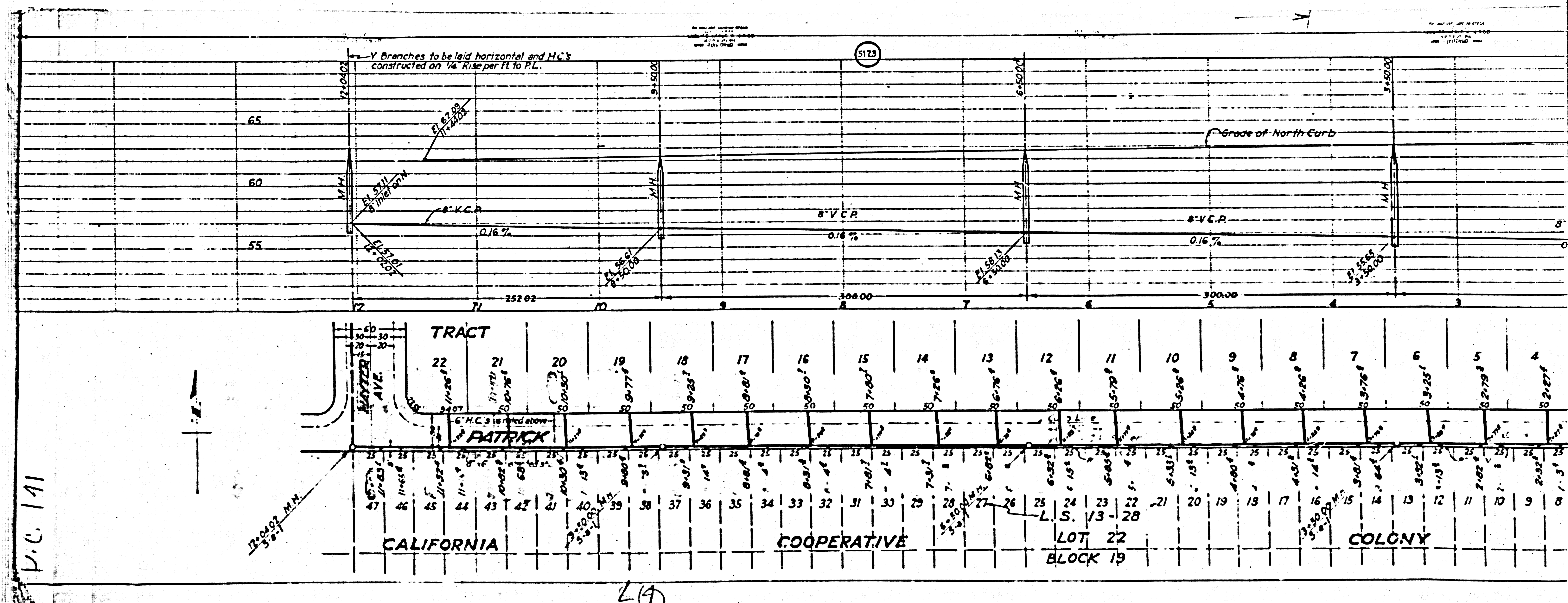
17 TRACT
 M.R. 21-15-16

ARTESIA (STATE HWY)

14
 0
 1
 2
 3

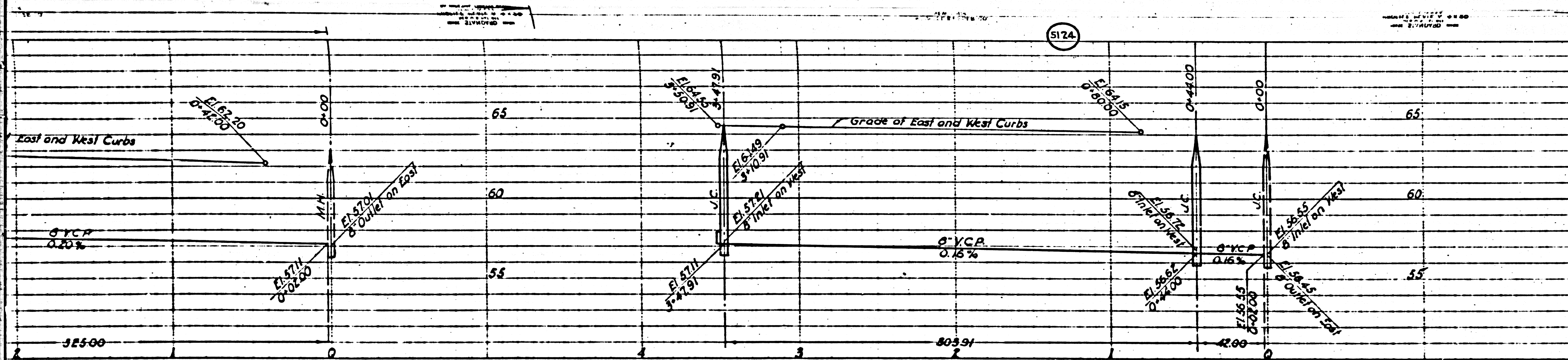




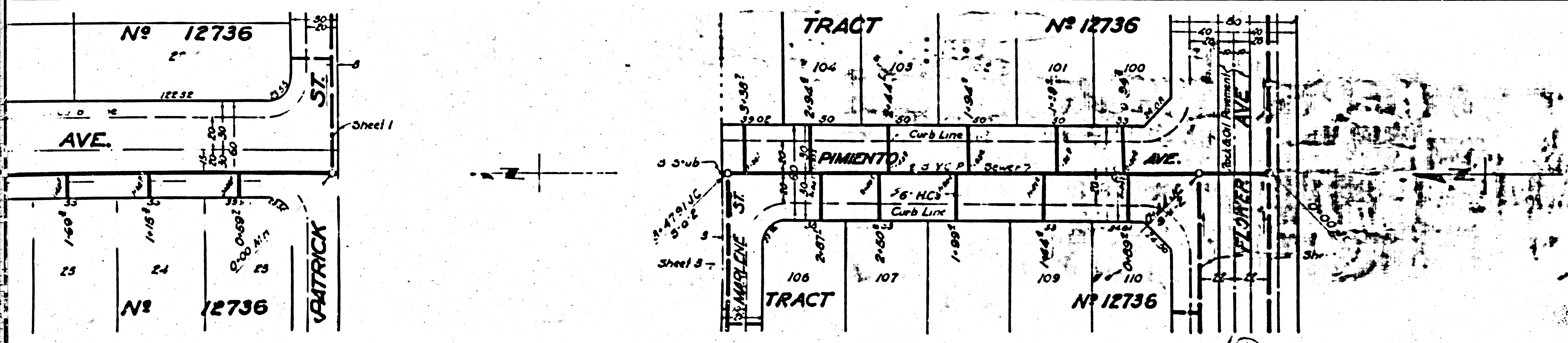


P.C. 141

29



PROFILE, ALIGNMENT AND GRADE OF	
SANITARY SEWERS	
TO BE CONSTRUCTED IN	
ROBLE ST	
BETWEEN FLOWER AVE. AND LAUREL AVE.	
MCCALL AVE.	
BETWEEN WALNUT AVE. AND LAUREL AVE.	
THOMPSON ST.	
BETWEEN LAKEWOOD BLVD. AND MCCALL AVE.	
PRIVATE CONTRACT NO. 141	
W.S. 33	
SHEET 2 OF 3 SHEETS	
SCALE VERT. 1" = 4'	JUNE 1941
PREPARED IN THE OFFICES OF	
GEORGE G. BLACKMER	
BY: <i>George G. Blackmer</i>	
REG. C.E. NO. 1211	
FOR LEGEND	
SEE PLAN NO. S-6-64	
FOR CONSTRUCTION NOTES SEE SHEET NO. 1	



DC

COUNTY OF LOS ANGELES, CALIFORNIA.

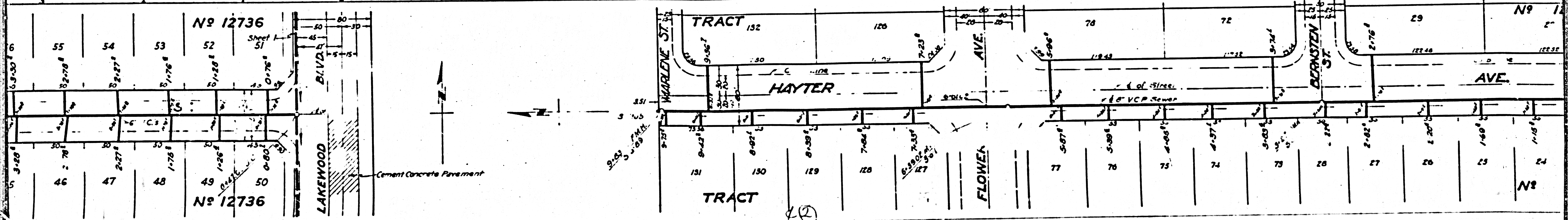
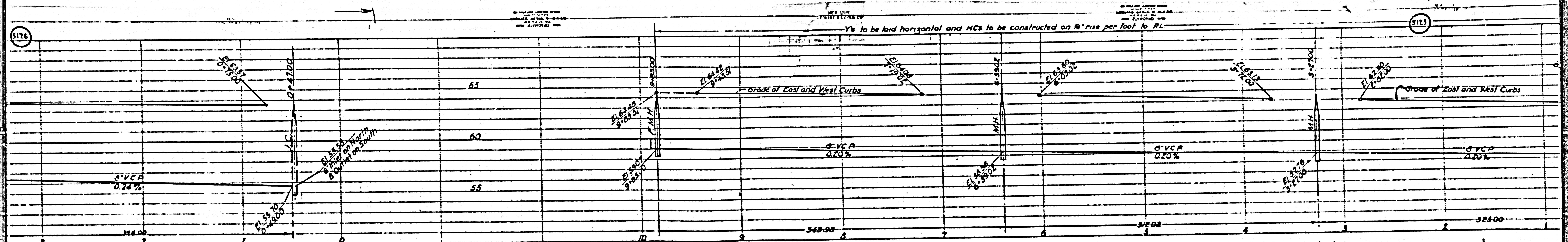
APPROVED *E. J. ...*
Chief Engineer, Public Works

APPROVED *C. J. ...*
City Engineer

CHECKED BY *Paul E. ...*
DATE OF CHECK NUMBER 23 12 1941

REVISION CHECKED BY *W. H. ...*
DATE OF CHECK NUMBER 23 12 1941

9



N^o 12736

N^o 12736

TRACT 152

TRACT

HAYTER

FLOWER

BARNSTEN

AVE

Cement Concrete Pavement

(2)

Ys to be laid horizontal and MCs to be constructed on 1/8" rise per foot to RL

Grade of East and West Curbs

Grade of East and West Curbs

6" V.C.P. 0.20%

6" V.C.P. 0.20%

6" V.C.P. 0.20%

6" V.C.P. 0.24%

WARLENE ST

AVE

ST

LAKWOOD BLVD

Sheet 1

51

0.76'

0.76'

0.76'

0.76'

0.76'

0.76'

0.76'

0.76'

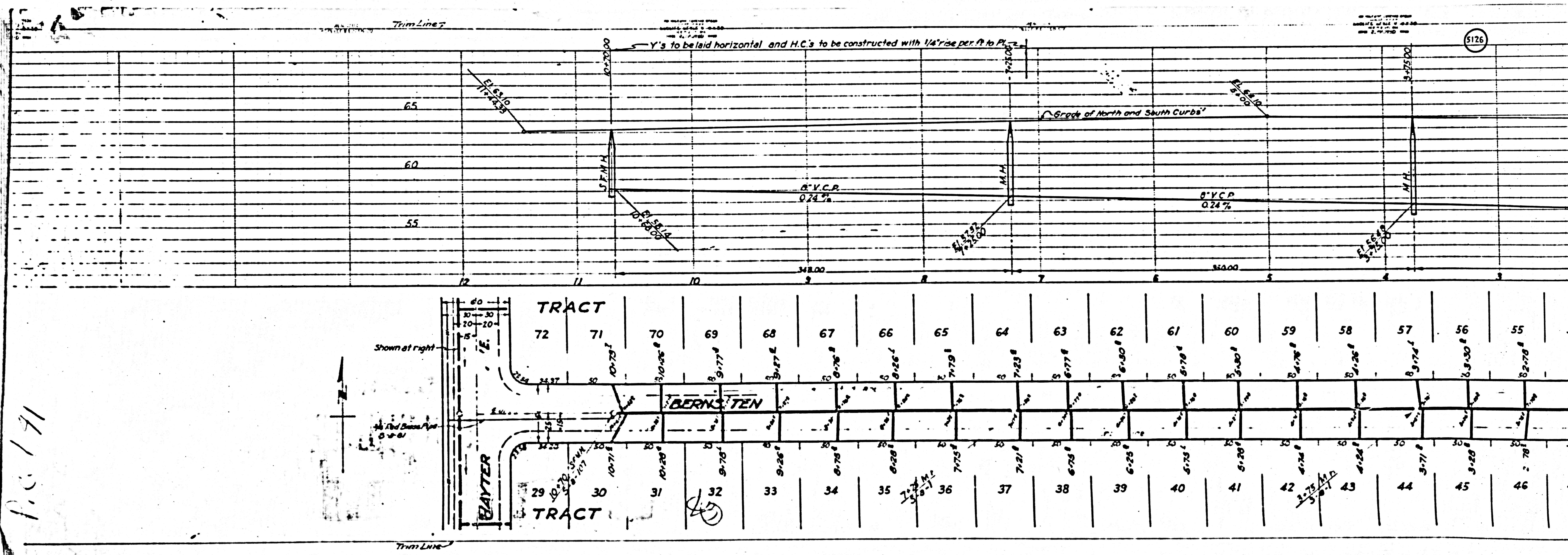
0.76'

0.76'

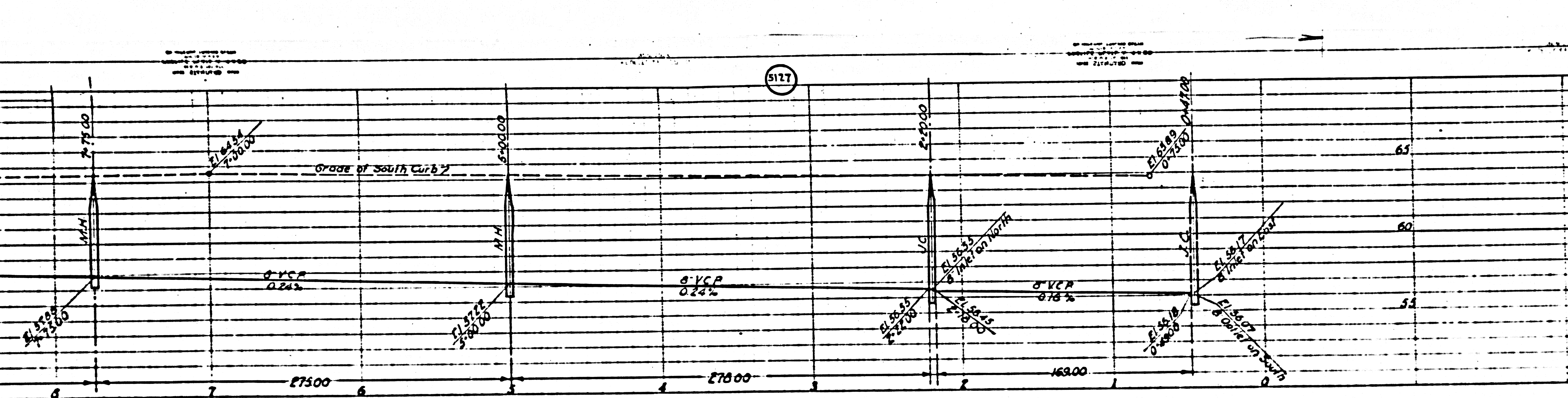
0.76'

0.76'

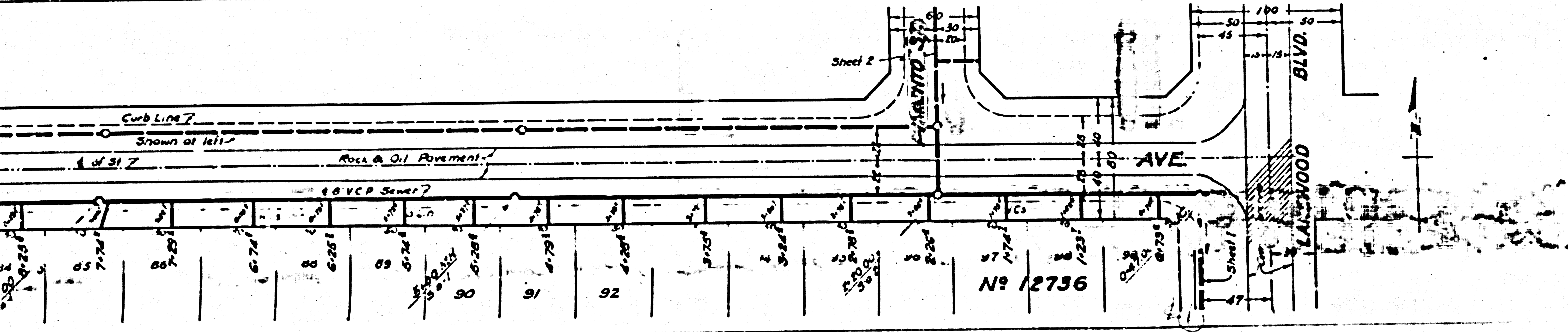
0.76'



P.C. 171

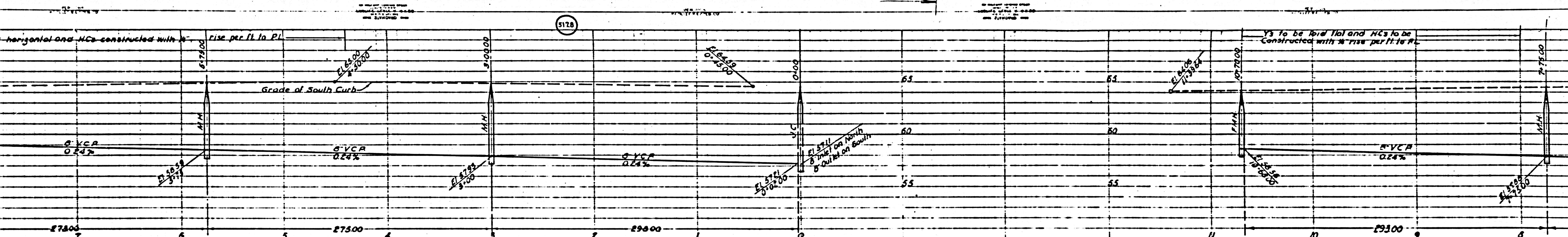


PROFILE, ALIGNMENT AND GRADE OF
SANITARY SEWERS 3
 TO BE CONSTRUCTED IN
FLOWER AVE
 BETWEEN LAKEWOOD BLVD. AND McCALL AVE.
 NORTH SIDE AND SOUTH SIDE
LAUREL AVE
 BETWEEN ROBLE ST. AND McCALL AVE.
 PRIVATE CONTRACT NO. 141
 W.S. 33
 SHEET 3 OF 3 SHEETS
 JUNE 1941
 PREPARED IN THE OFFICES OF
 GEORGE G. BLACKMER
 BY *George G. Blackmer*
 REG. C.E. NO. 1211
 FOR LEGEND
 SEE PLANS 8-8-41
 FOR CONSTRUCTION NOTES SEE SHEET NO. 1

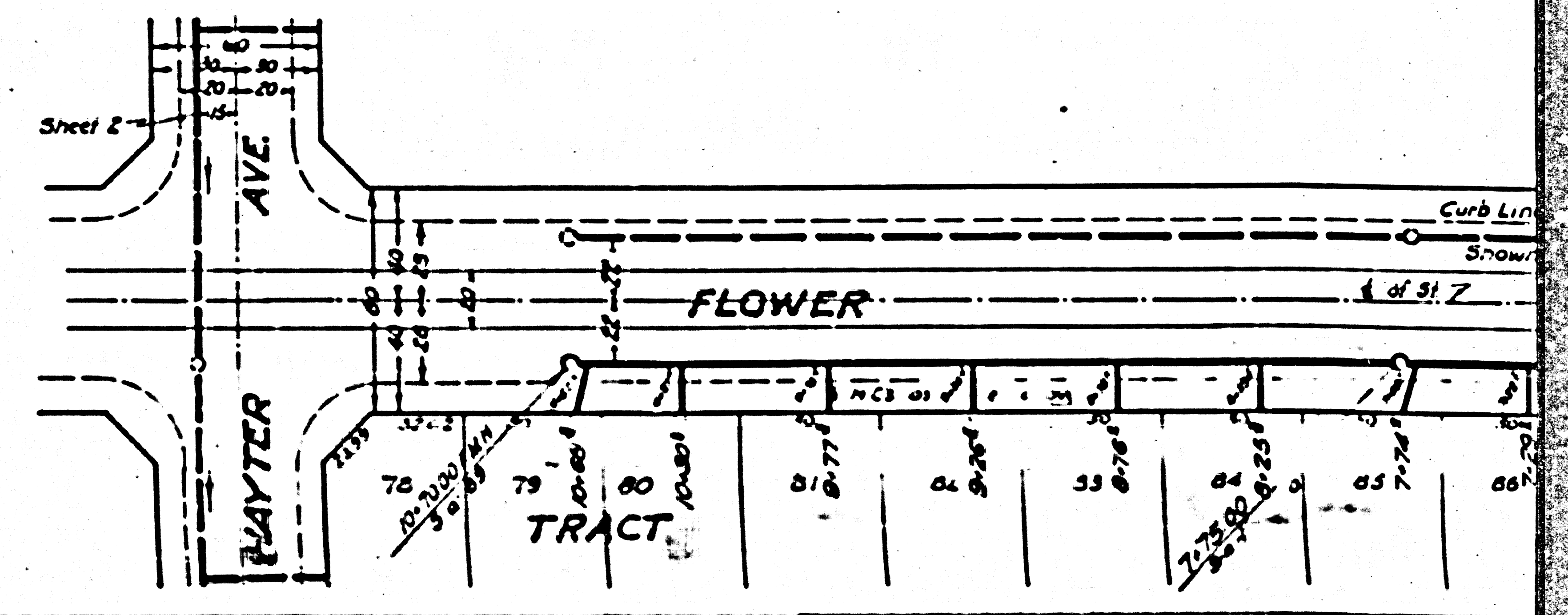
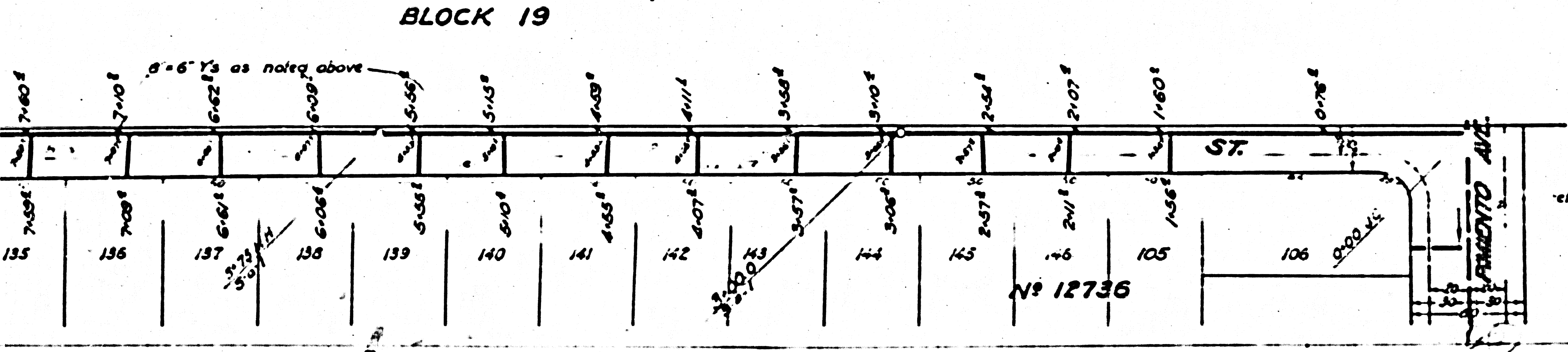


COUNTY OF LOS ANGELES, CALIFORNIA.
 APPROVED *[Signature]*
 APPROVED *C. T. Compton*
 COUNTY ENGINEER OF SANITARY SEWERS
 DEC 20 1941
 REVISION CHECKED BY *[Signature]*
 OFFICE OF COUNTY ENGINEER SANITARY SEWERS

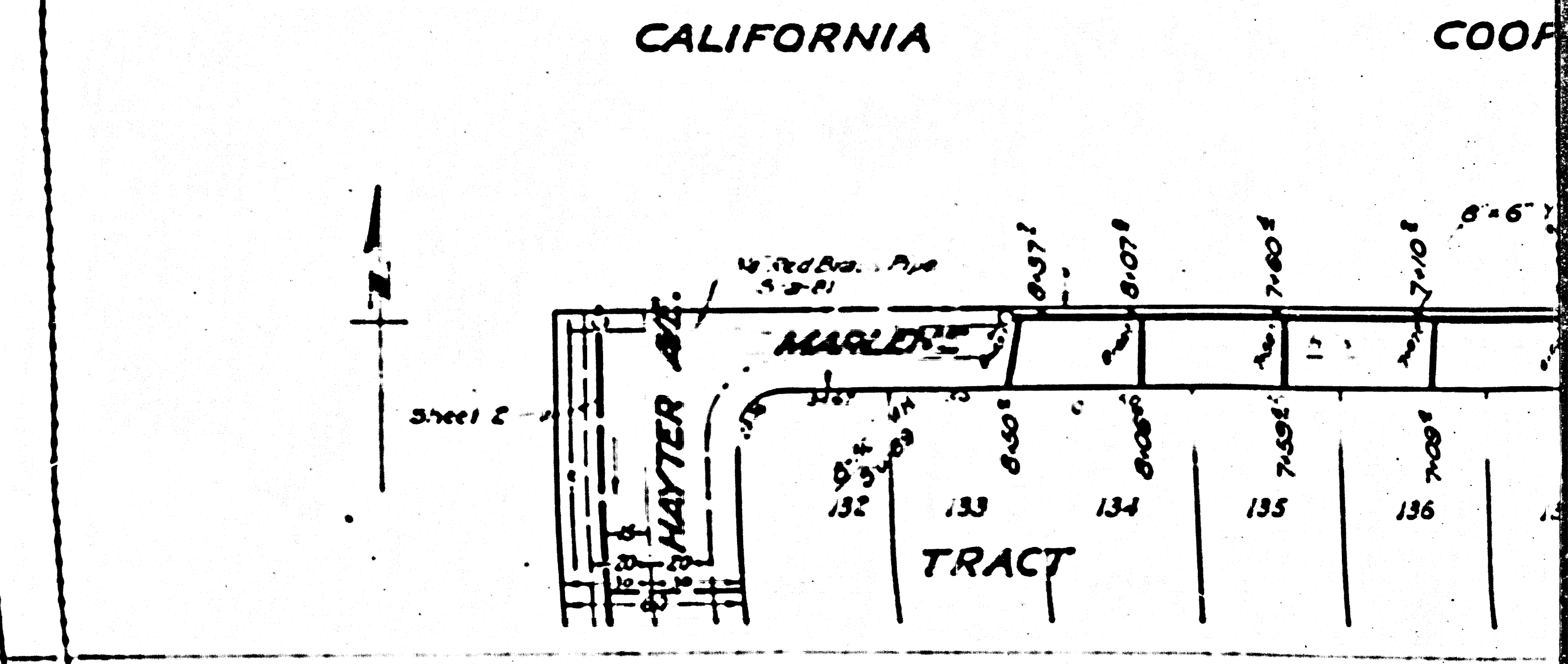
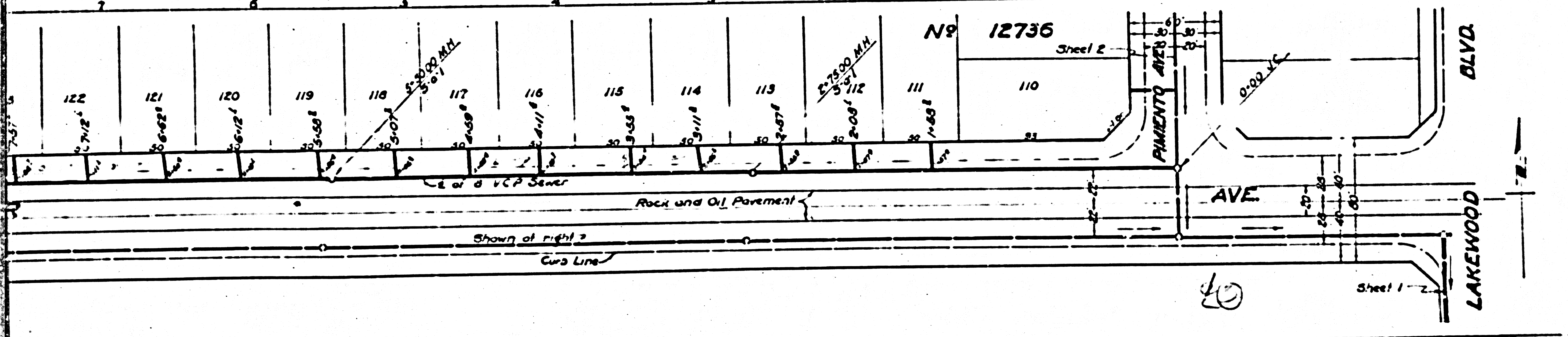
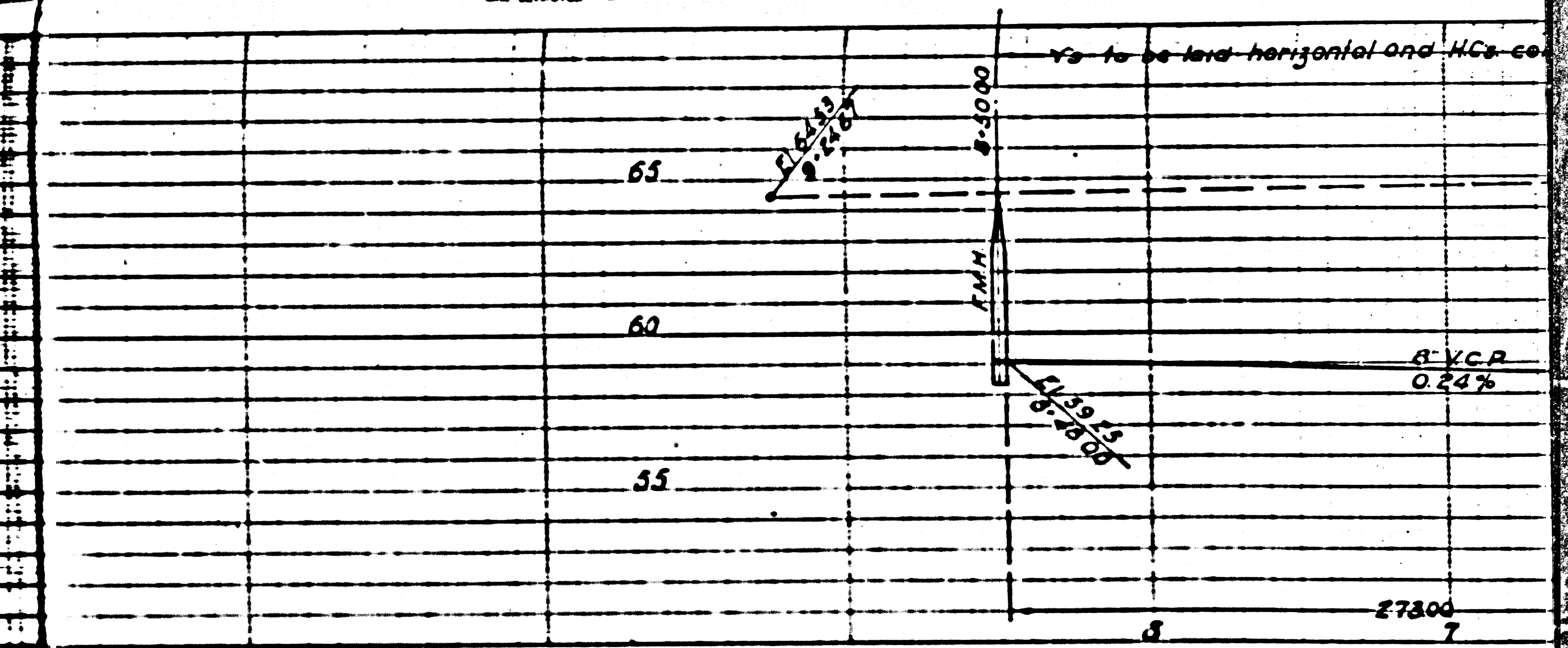
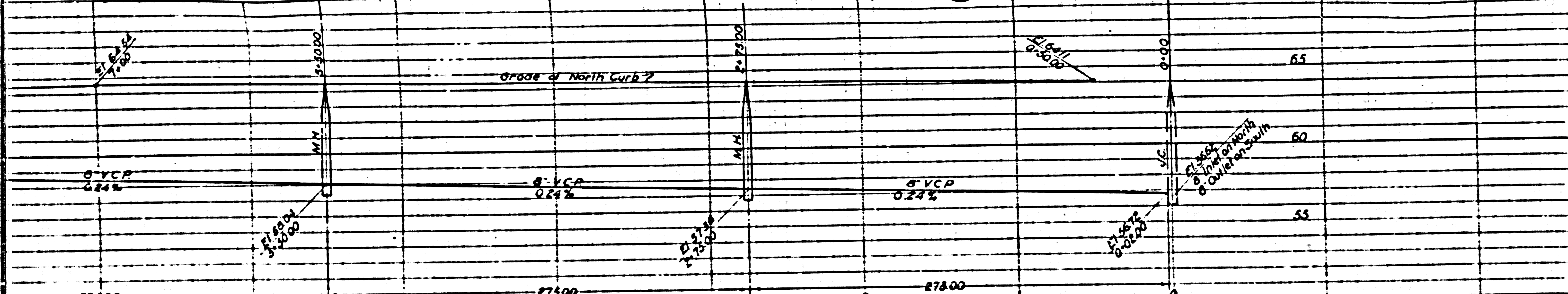
No 12736



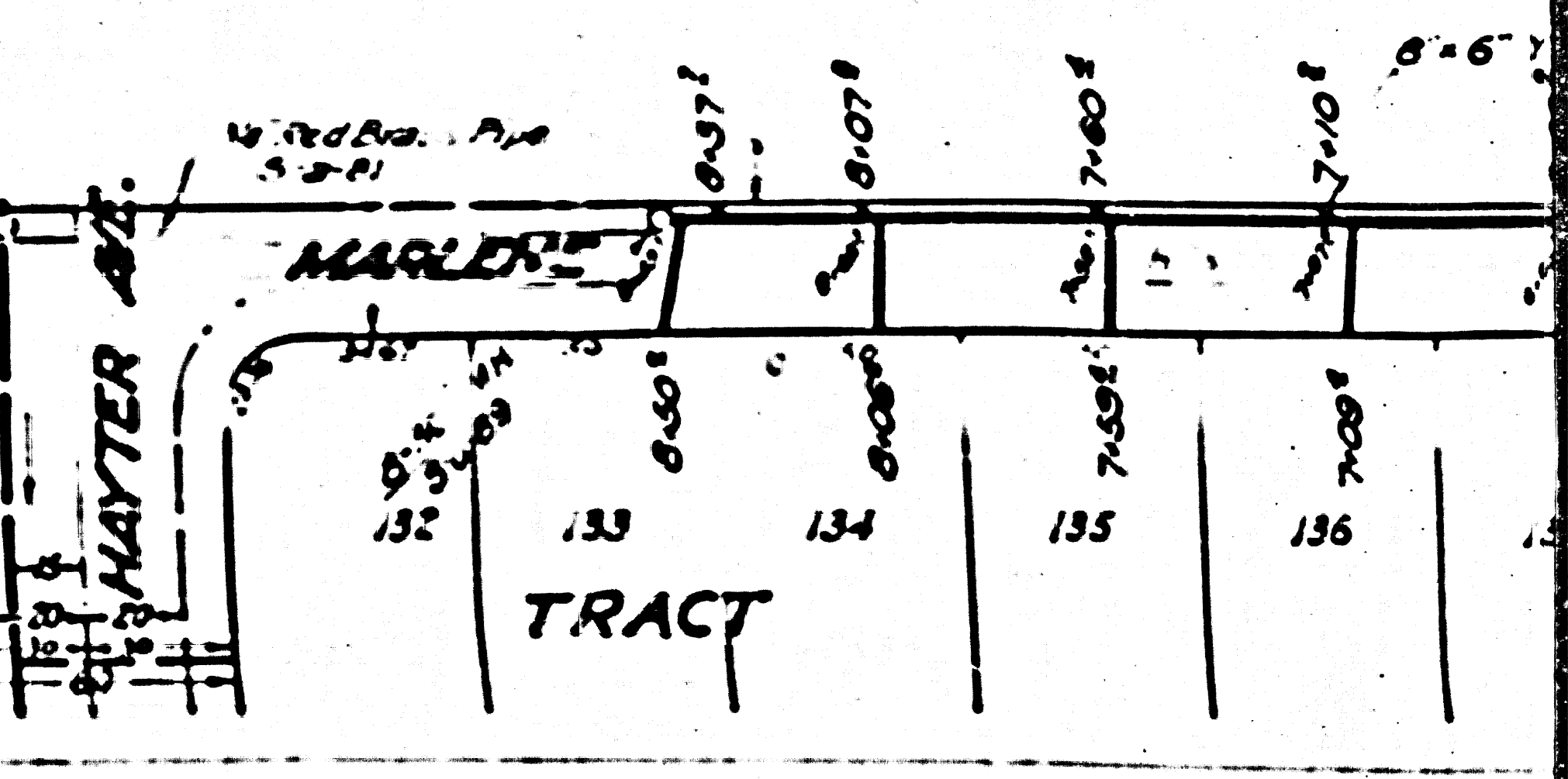
COOPERATIVE COLONY TRACT
 LOT 26 BLOCK 19 MR 21: 15-16

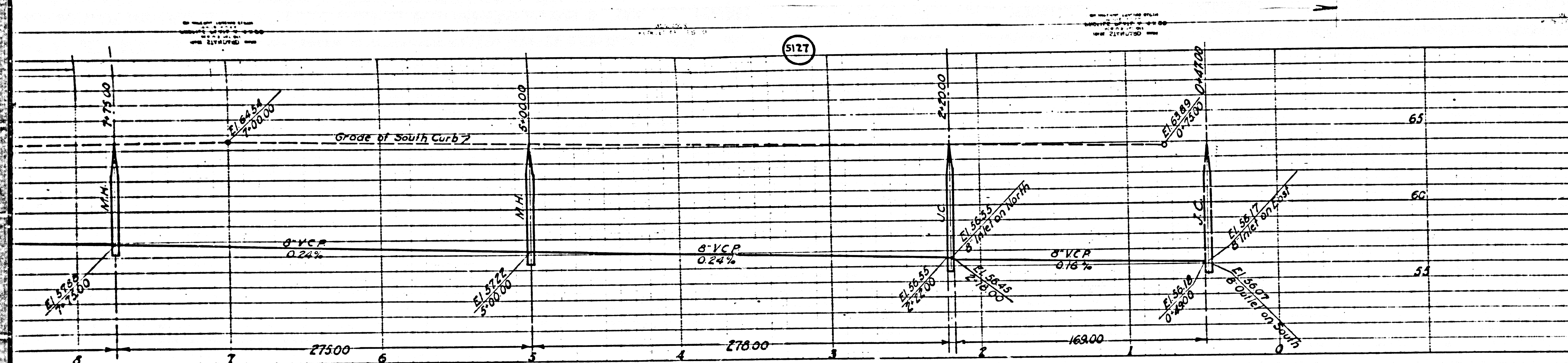


M.C. to be constructed with inverts of P.I.
5.0 below curb grade

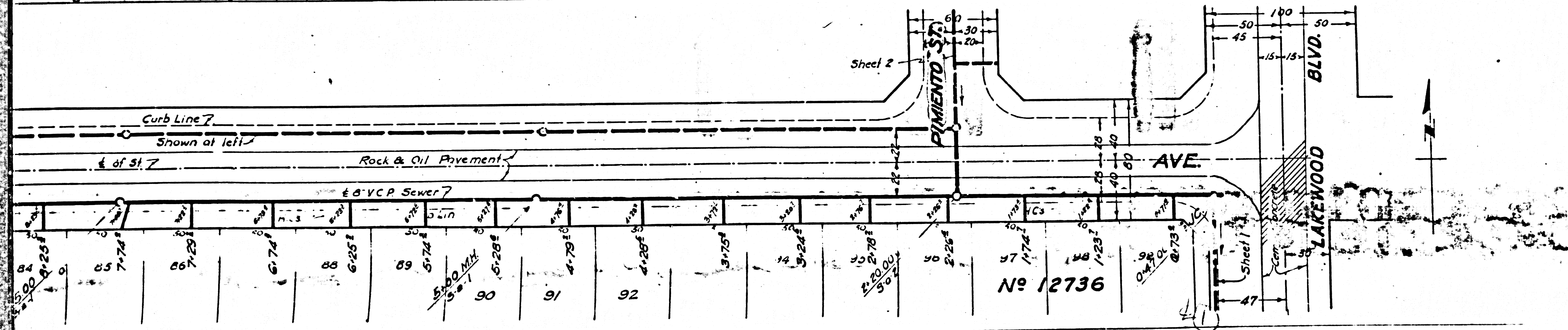


CALIFORNIA COOP

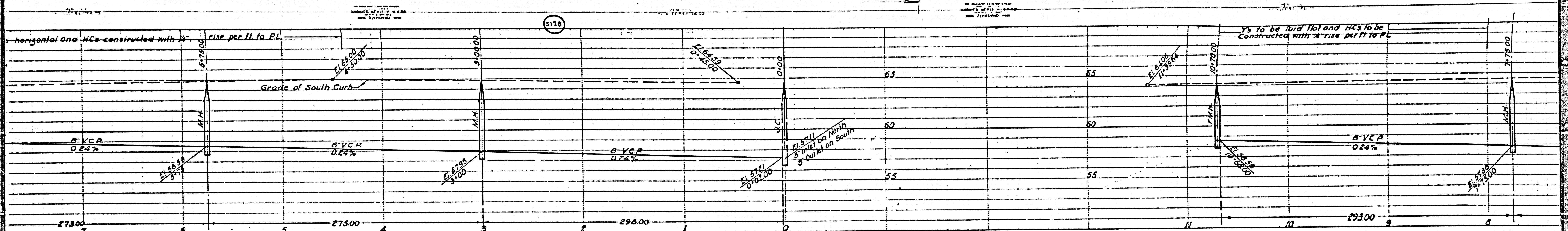




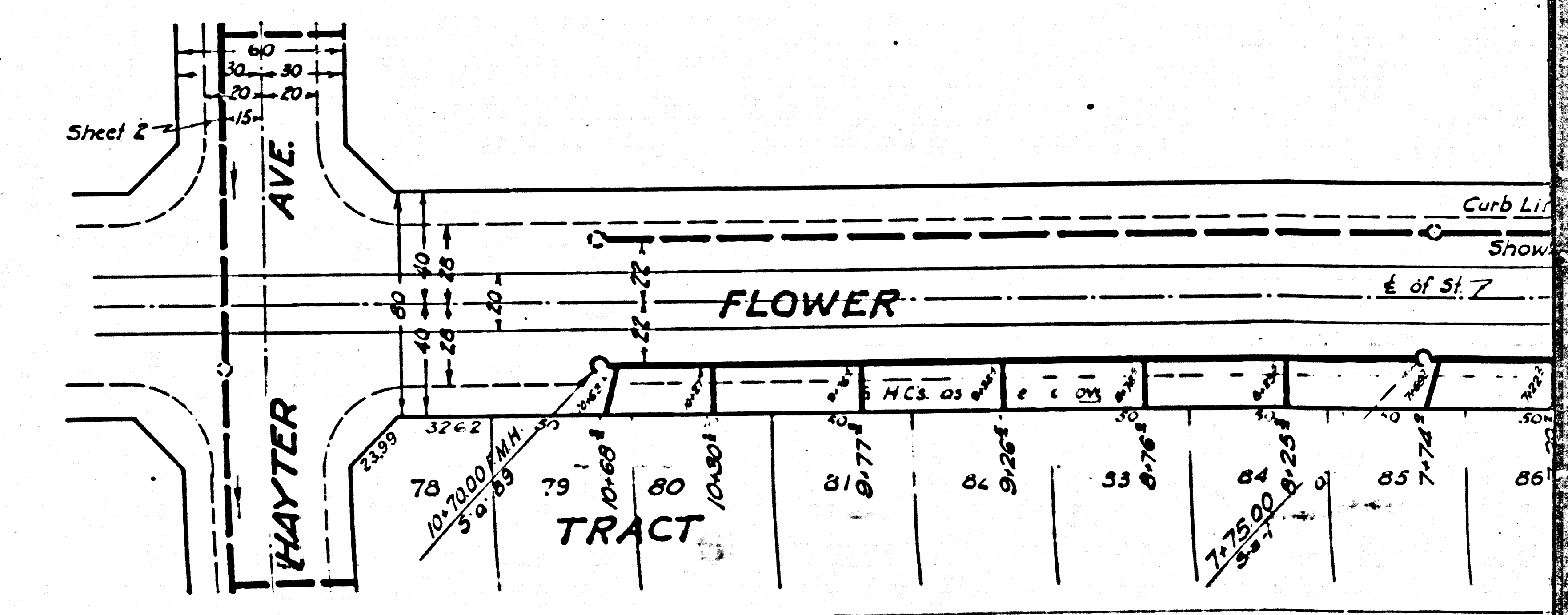
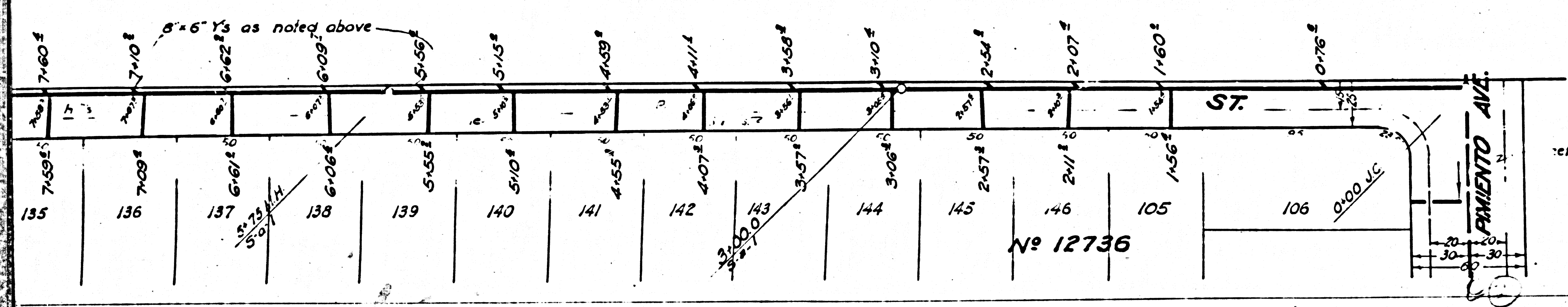
PROFILE, ALIGNMENT AND GRADE OF		3
SANITARY SEWERS TO BE CONSTRUCTED IN		
FLOWER AVE BETWEEN LAKEWOOD BLVD AND McALL AVE NORTH SIDE AND SOUTH SIDE		
LAUREL AVE BETWEEN ROBLE ST AND McALL AVE		
PRIVATE CONTRACT NO. 141 W.S. 33		
SHEET 3 OF 3 SHEETS		
PREPARED IN THE OFFICES OF		
GEORGE G. BLACKMER		
BY: <i>George G. Blackmer</i> REG. C.E. NO. 1211		
FOR LEGEND SEE PLAN NO. S-0-84		
FOR CONSTRUCTION NOTES SEE SHEET NO. 1		
COUNTY OF LOS ANGELES, CALIFORNIA.		
APPROVED <i>C. R. Conston</i> CHIEF DEPUTY COUNTY ENGINEER		
APPROVED <i>C. R. Conston</i> ACTING CHIEF ENGINEER OF COUNTY SANITATION DISTRICT NO. 2		
CHECKED <i>Paul E. ...</i> OFFICE OF COUNTY ENGINEER REG. C.E. NO. 1211		
REVISION CHECKED BY <i>...</i> JULY 10, 1941 OFFICE OF COUNTY ENGINEER REG. C.E. NO. 1211		



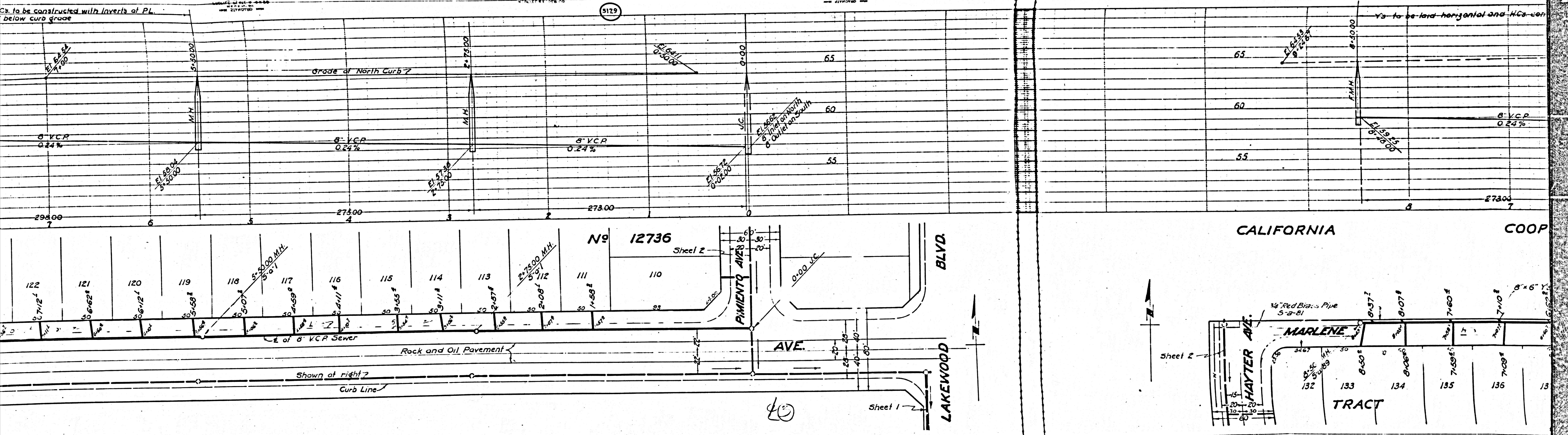
No 12736



COOPERATIVE COLONY TRACT
 LOT 26 BLOCK 19
 M.R. 21: 15-16



to be constructed with inverts of PL
below curb grade



CALIFORNIA COOP

