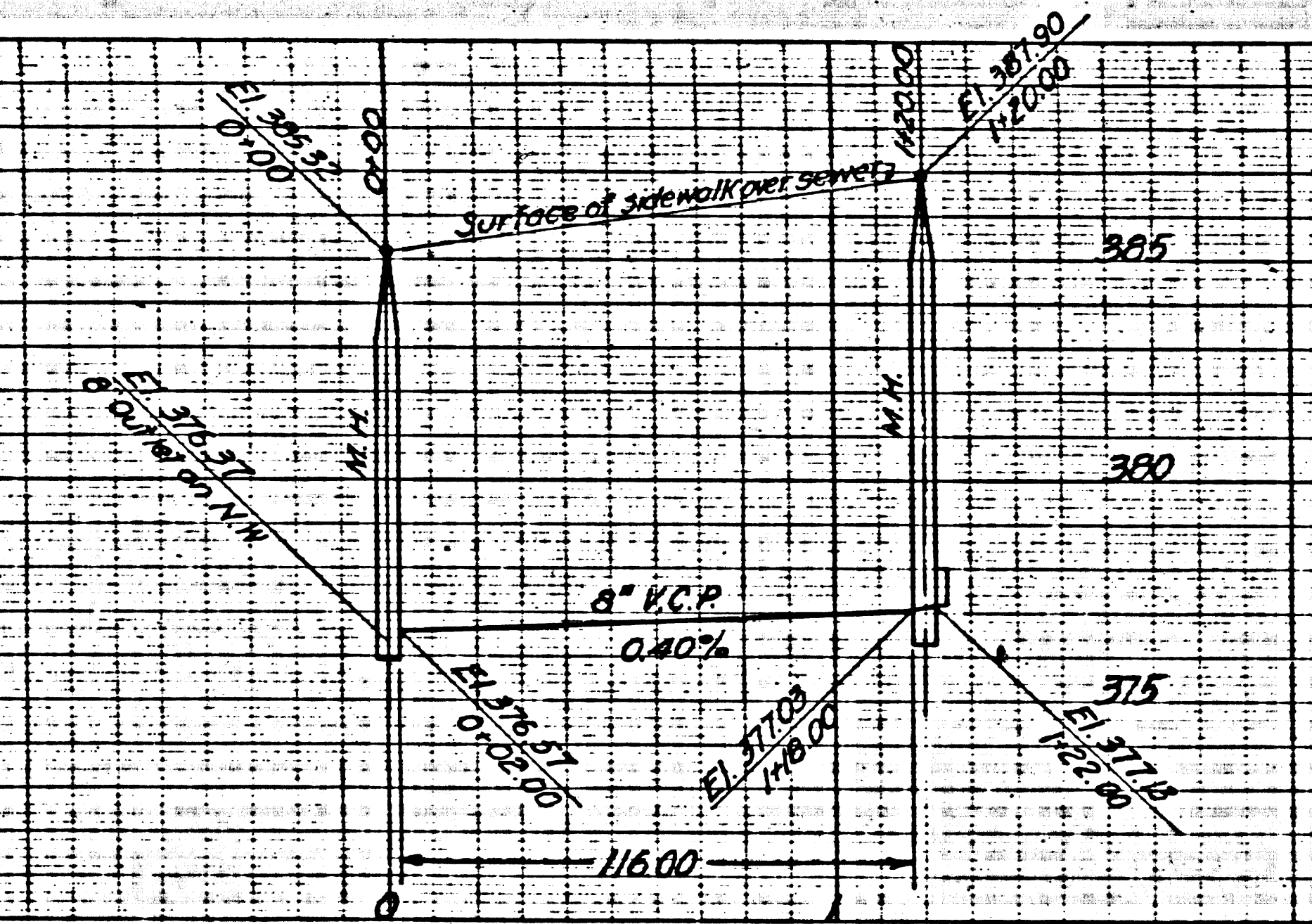


5187
 B.P.E. No. 3, E.L. 379.492 & A.169 p.2
 SUNSET Blvd. opposite Holly Vista Dr.
 L & T. S. Co. Sunset-32' W. & C.R. to Private Dr.



USE "JUST RITE" MANHOLE FRAMES AND COVERS.
 USE STANDARD STRENGTH PIPE.
 USE SEWER JOINT COMPOUND FOR ALL VITRIFIED CLAY PIPE.
 RESURFACE ALL TRENCH WITHIN PAVED AREA TO MEET
 LOS ANGELES COUNTY ROAD DEPT. OR STATE HIGHWAY REQUIREMENTS.
 ENCASE FOUR FEET OF SEWER AT POINTS OF INTERFERENCE
 WITH POLES AS PER S.F.C. 6.

PROFILE, ALIGNMENT AND GRADE OF
SANITARY SEWER
 TO BE CONSTRUCTED IN
SUNSET BLVD.

PRIVATE CONTRACT NO. 147.
 W.S. 22.
 1 SHEET

SCALE: VERT. 1" = 4'

JUNE 30, 1941

PREPARED IN THE OFFICES OF
ROBERT G. MARTIN

BY: *R.G. Martin*

RES. C.E. NO. 2083.

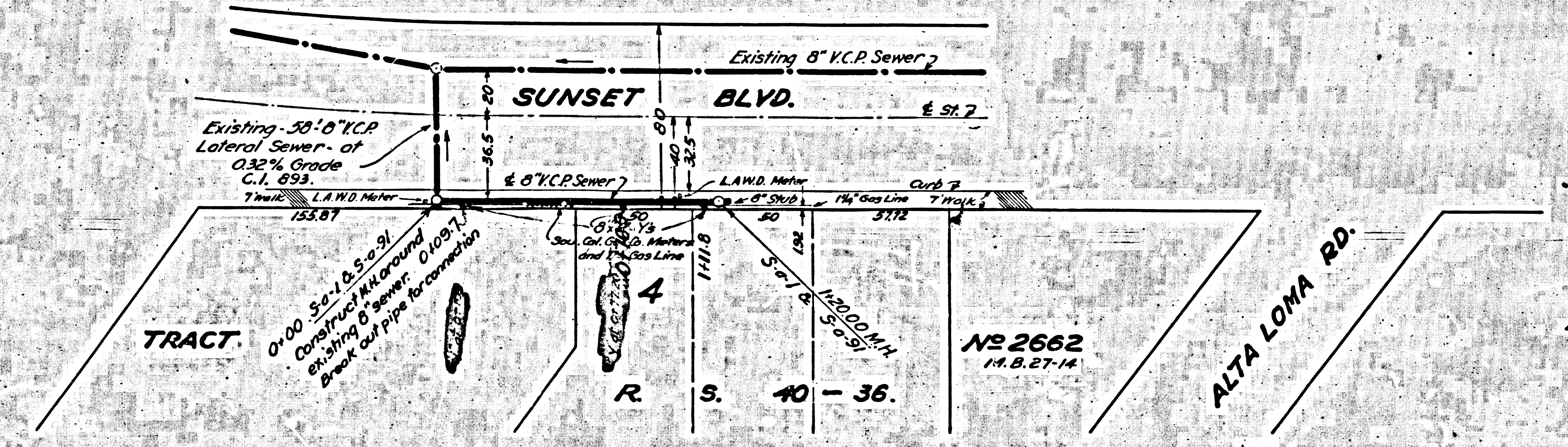
FOR LEGEND
 SEE PLAN NS-3-0-64

NOTE:
 GRADES TO WHICH THIS IMPROVEMENT IS TO BE CONSTRUCTED ARE SHOWN ON PLAN AND PROFILE.
 GRADE POINTS FOR TOP OF CURB, CENTER LINE OF STREET OR CENTER LINE OF ALLEY ARE SHOWN BY
 CIRCLES ON PROFILE. AT ALL POINTS BETWEEN DESIGNATED POINTS THE GRADE SHALL BE ESTABLISHED
 SO AS TO CONFORM TO A STRAIGHT LINE DRAWN BETWEEN SAID DESIGNATED POINTS.
 ELEVATIONS ARE IN FEET ABOVE U. S. MEAN SEA LEVEL.
 THIS DRAWING AND THE DATA HEREON ARE HEREBY MADE A PART OF THE SPECIFICATIONS.
 WORK SHALL BE CONDUCTED ACCORDING TO SPECIFICATIONS ON FILE IN THE OFFICE OF THE
 COUNTY ENGINEER AND SHALL BE PROSECUTED ONLY IN THE PRESENCE OF THE COUNTY ENGINEER.
 BEFORE WORK CAN BE STARTED THE CONTRACTOR MUST OBTAIN A PERMIT TO EXCAVATE IN
 COUNTY STREETS FROM THE L.A. COUNTY ROAD DEPT., 1104 HALL OF RECORDS, AND MAKE
 DEPOSIT WITH THE COUNTY ENGINEER, 708 UNION LEAGUE BUILDING, SUFFICIENT TO COVER THE
 COST OF CONSTRUCTION INSPECTION AND RECORD PLANS.
 IF WORK IS TO BE DONE IN A STATE HIGHWAY, A PERMIT MUST BE OBTAINED FROM THE STATE OF CALIFORNIA,
 DIVISION OF HIGHWAYS, 808 STATE BUILDING, AFTER MAKING THE DEPOSIT WITH THE COUNTY ENGINEER.
COUNTY OF LOS ANGELES, CALIFORNIA.

APPROVED: *Alfred Jones*
 COUNTY ENGINEER

APPROVED: *W.C. McLean*
 CHIEF ENGINEER COUNTY
 SANITATION DISTRICT NO. 4

CHECKED BY *W.C. McLean* 7-1-1941
 OFFICE OF COUNTY ENGINEER, RES. C.E. NO. 3205



PC 147

PC 147 0 of 1