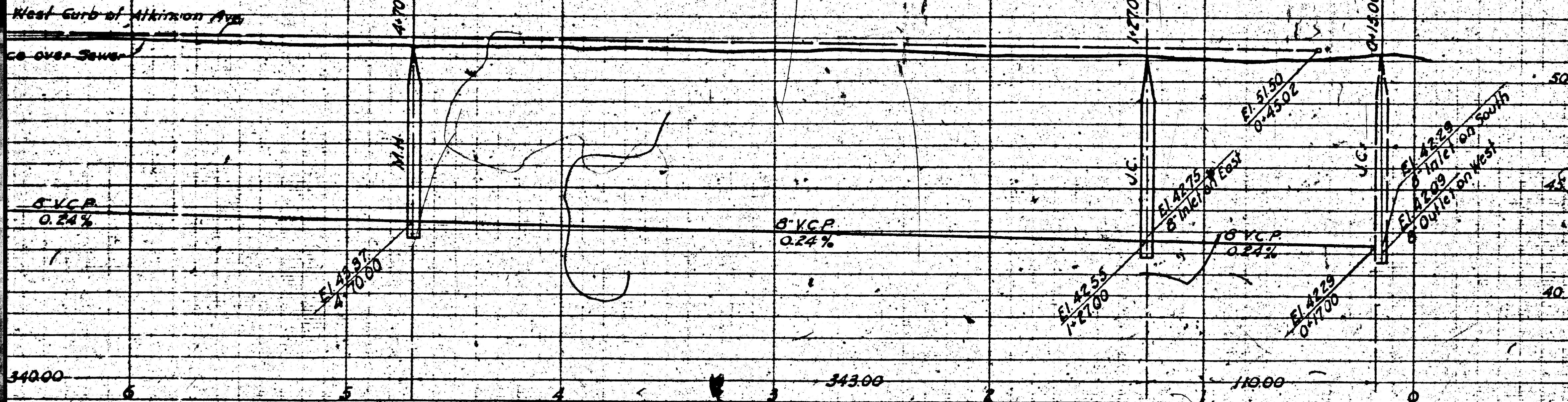


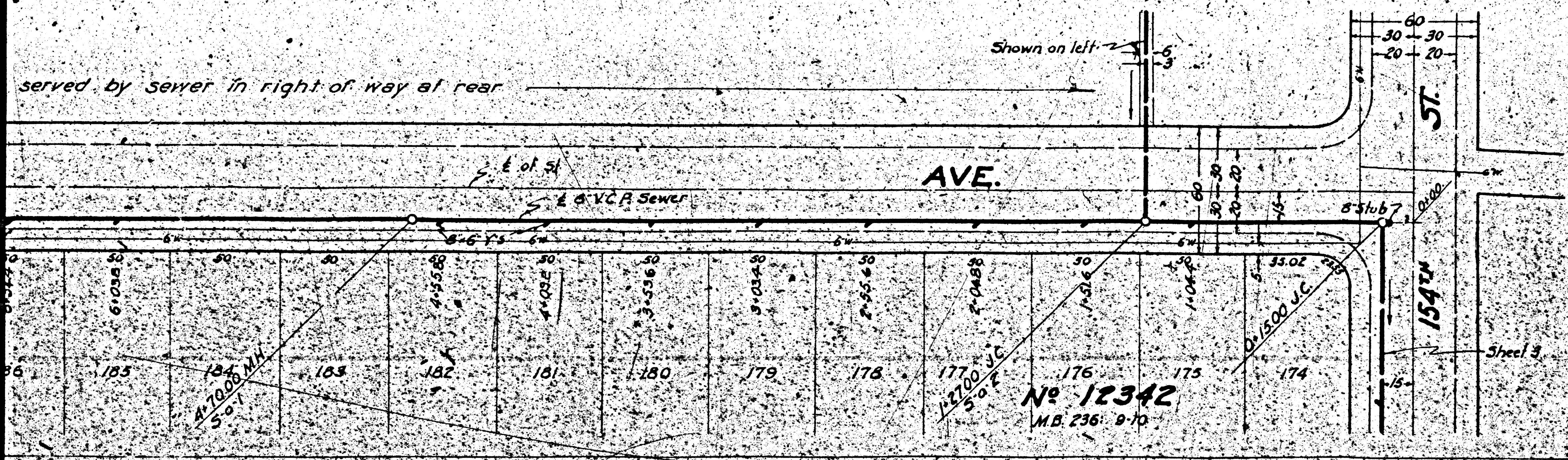
5207

5206



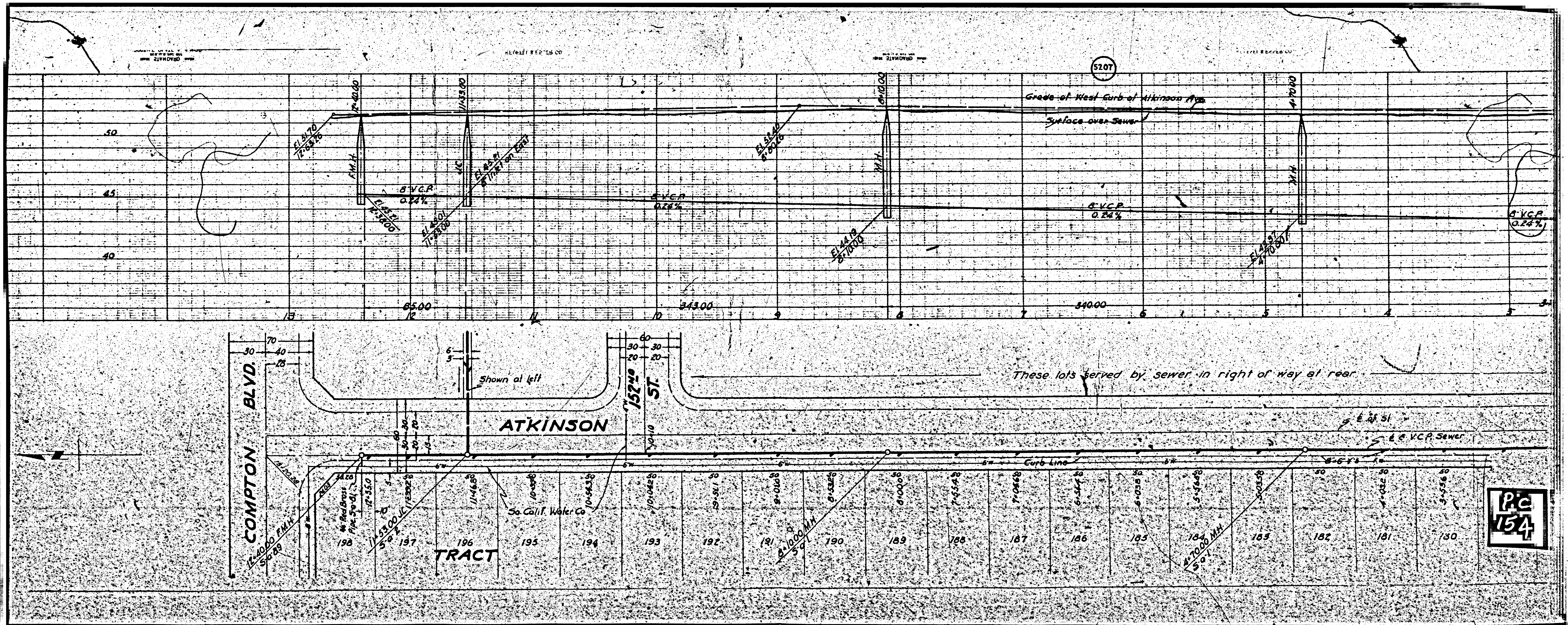
B.M. # - Elev. 43.82
 Sp. in R.P. # 6361 E. N.W. Corner
 Crenshaw and Manhattan Beach
 Blvd
 Tap cut on NORTH SL of AC Curb
 return S.E. Corner Crenshaw and
 154th St. 52.11
 Spt. & Intersection Complan and
 Catchbasin 51.41
 Spt. & Intersection Complan
 and Alderson 51.62
 Tap cut on NORTH SL of AC Curb
 return S.W. Corner 154th and
 Purcho 49.35

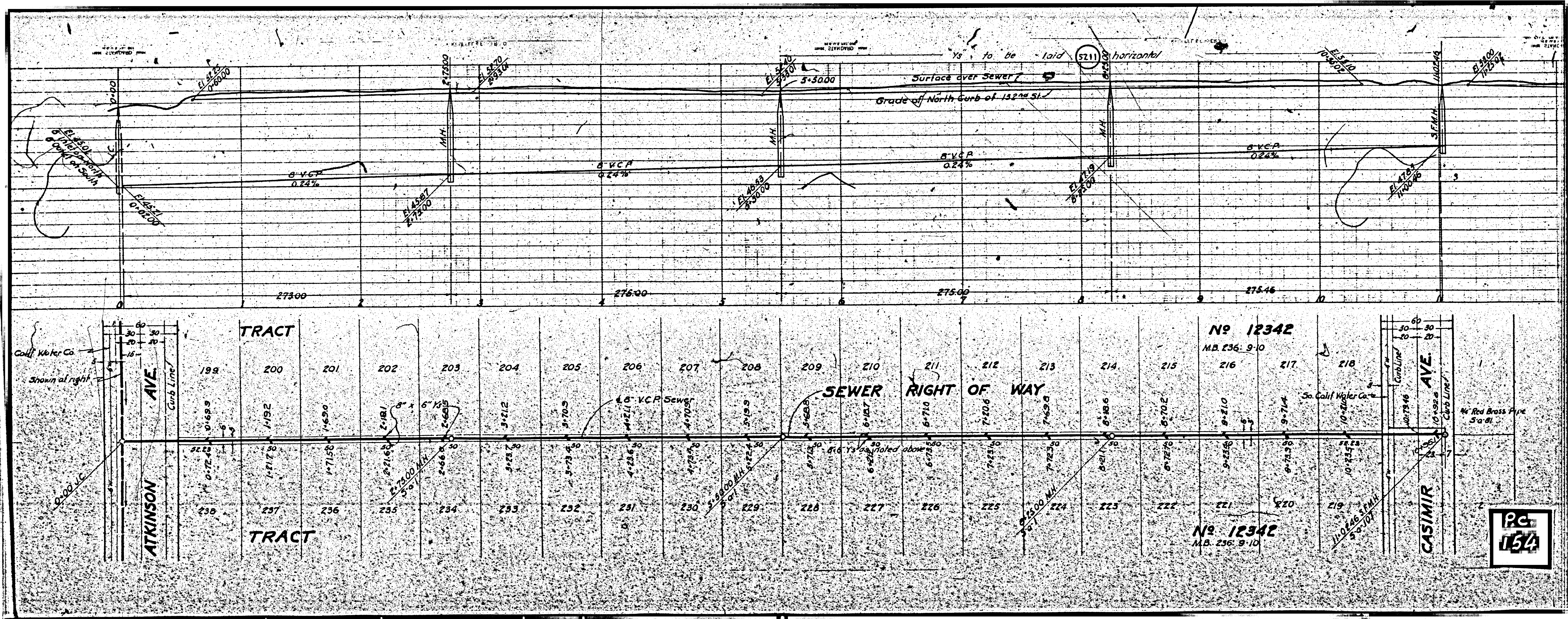
USE "JUST-RITE" MANHOLE FRAMES AND COVERS.
 USE STANDARD STRENGTH PIPE EXCEPT AS NOTED.
 USE SEWER JOINT COMPOUND FOR ALL VITRIFIED CLAY PIPE JOINTS.
 RESURFACE ALL TRENCH WITHIN PAVED AREA TO MEET
 LOS ANGELES COUNTY ROAD DEPT. REQUIREMENTS.
 ENCASE FOUR FEET OF SEWER AT POINTS OF INTERFERENCE
 WITH POLES AS PER S-0-6.



No. 12342
 M.B. 236, P. 10

PC
 154





TRACT

No. 12342

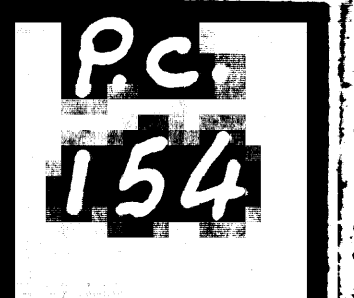
M.B. 236: 9-10

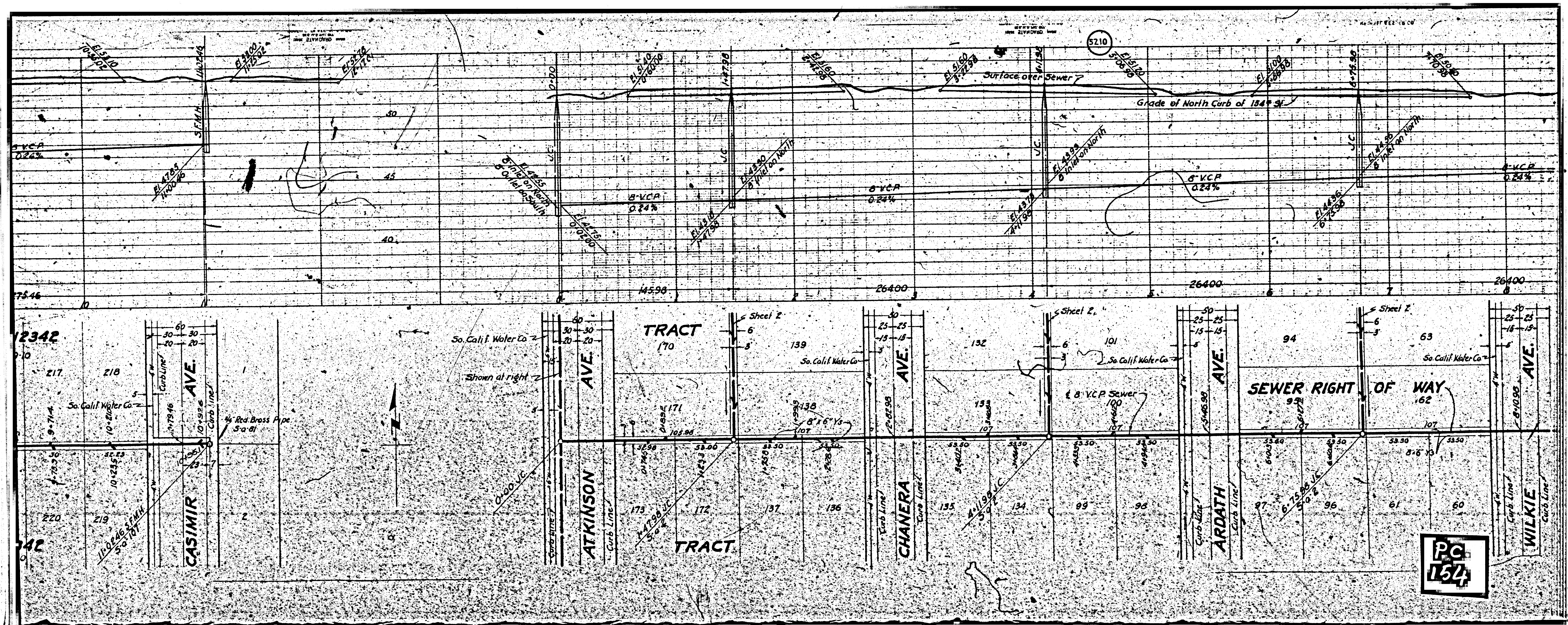
SEWER RIGHT OF WAY

TRACT

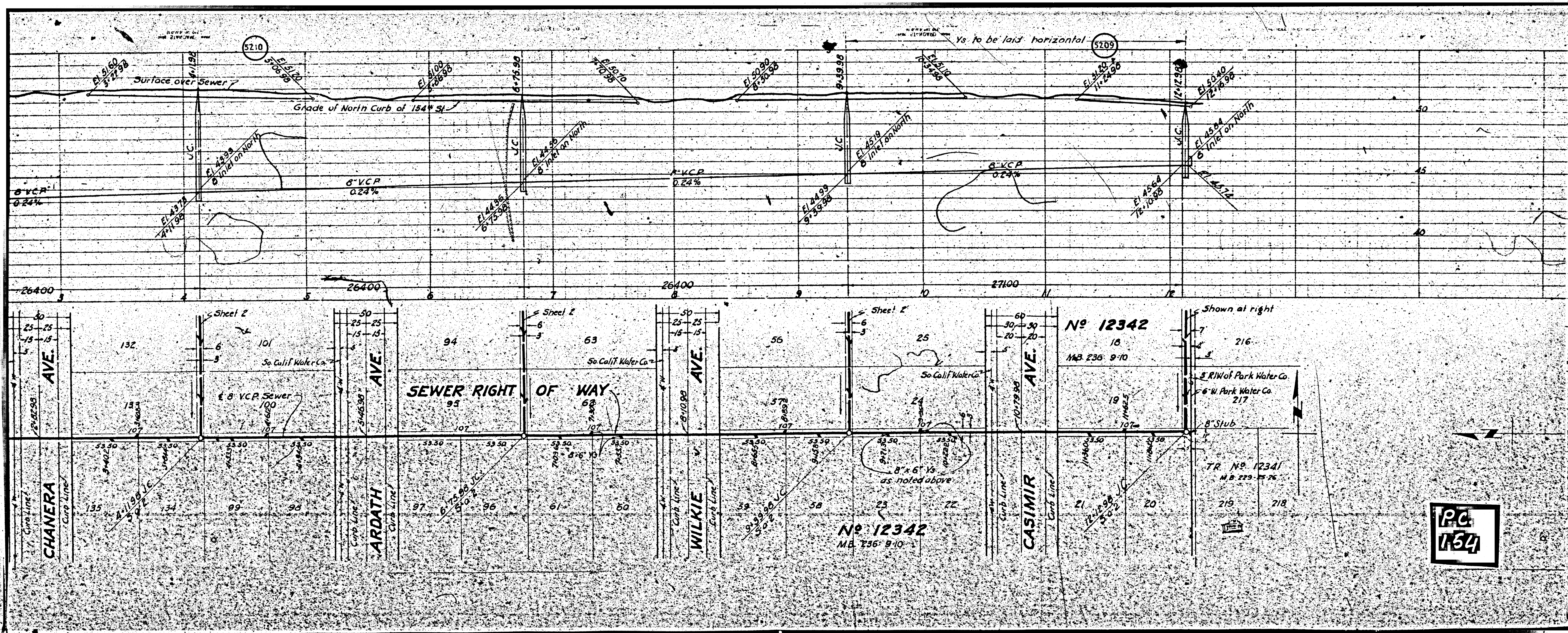
No. 12342

M.B. 236: 9-10

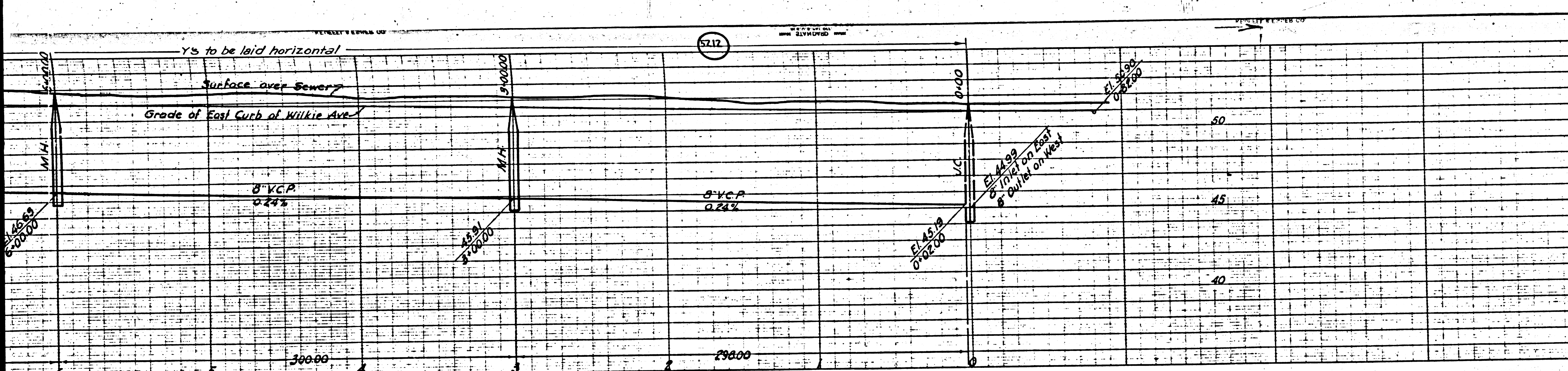




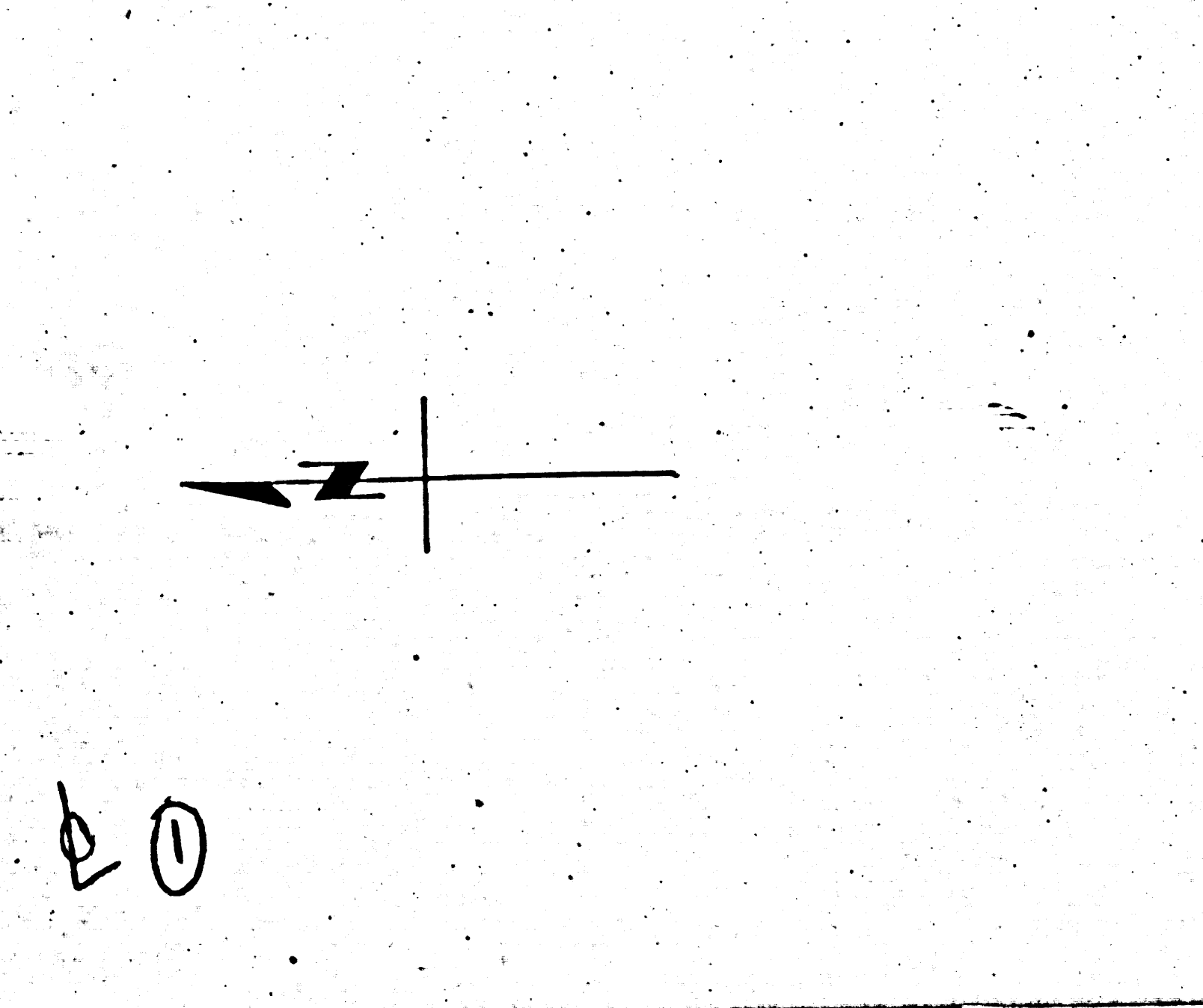
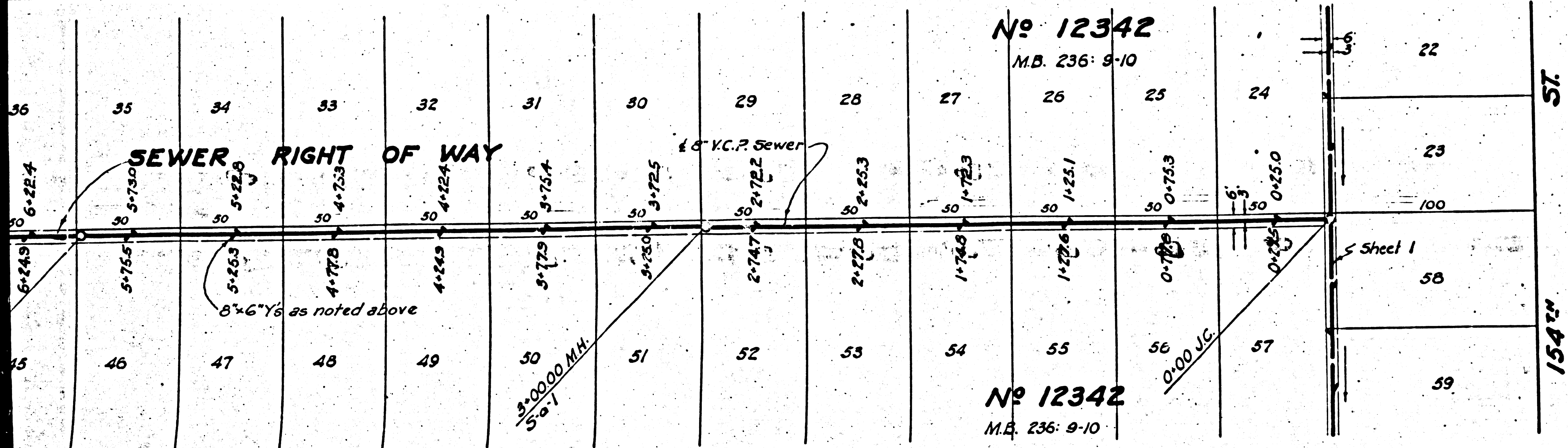
PG
 134



PC
 154

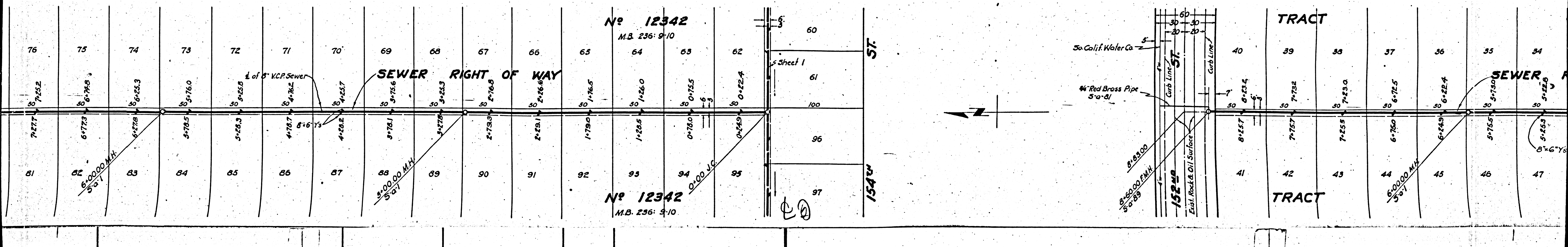
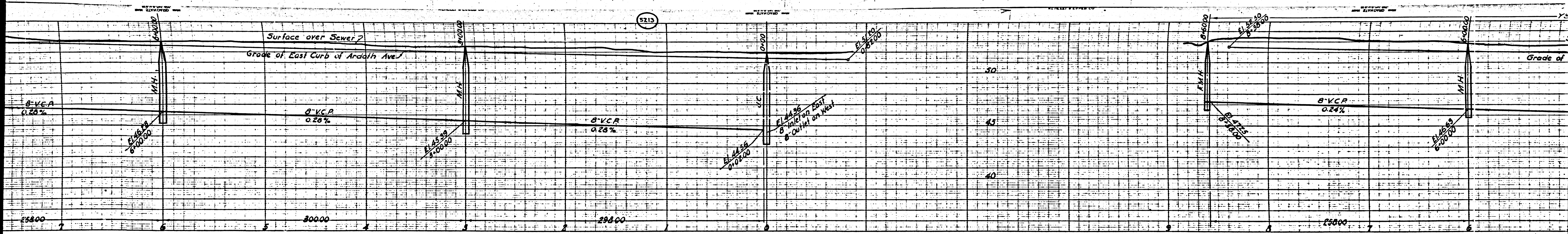


PROFILE, ALIGNMENT AND GRADE OF:
SANITARY SEWERS 2
 TO BE CONSTRUCTED IN
SANITARY SEWER RIGHTS OF WAY
 IN TRACT NO. 12342
 PRIVATE CONTRACT NO. 154
 W.S. 25
 SHEET 2 OF 3 SHEETS
 SCALE: VERT. 1" = 4'
 HORIZ. 1" = 40'
 JUNE 1941
 PREPARED IN THE OFFICES OF
 HARRY GILBERT
 BY: *Harry S. Gilbert*
 REG. C.E. NO. 1787



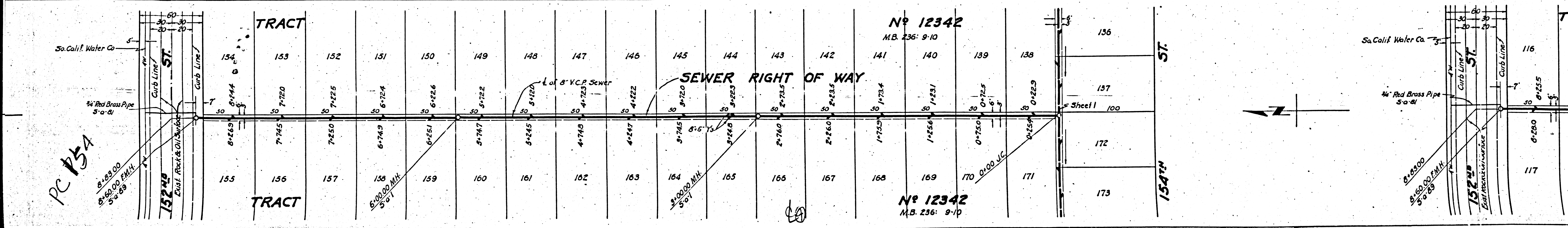
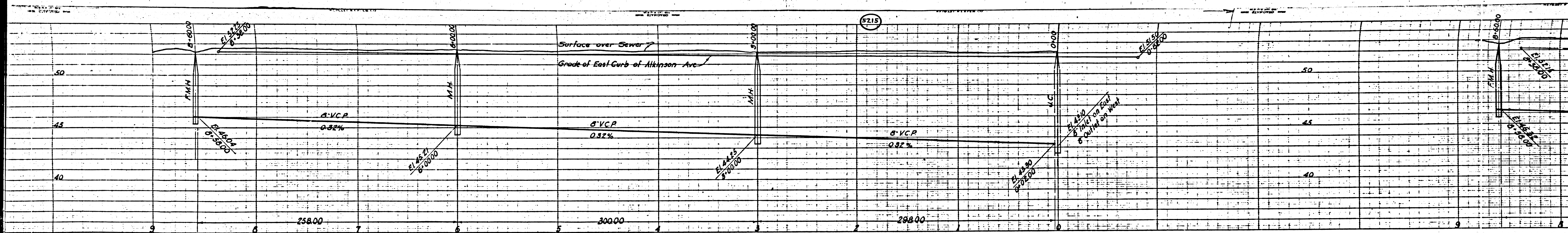
FOR LEGEND
 SEE PLAN NO. 9-0-64
 FOR CONSTRUCTION NOTES SEE SHEET 1
 COUNTY OF LOS ANGELES, CALIFORNIA.
 APPROVED: *Alfred J. Jones*
 COUNTY ENGINEER
 APPROVED: *C.P. Constan*
 ACTING CHIEF ENGINEER OF COUNTY
 SANITATION DISTRICT NO. 2
 CHECKED BY: *Robert Collins* 1941
 OFFICE OF COUNTY ENGINEER, REG. C.E. NO. 1822

12342
 154
 1941
 1043
 12342



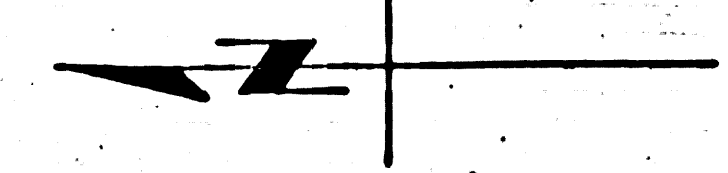
M3

M5



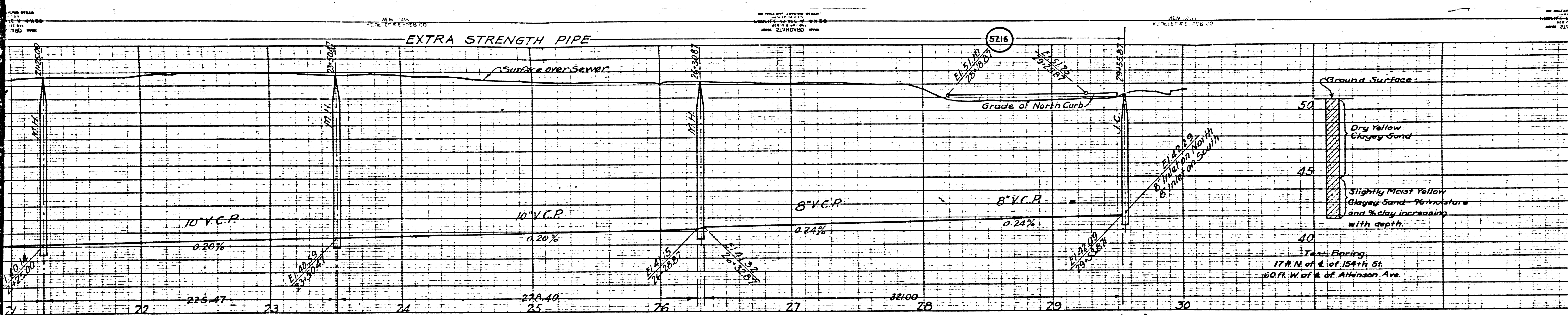
PC 154

50

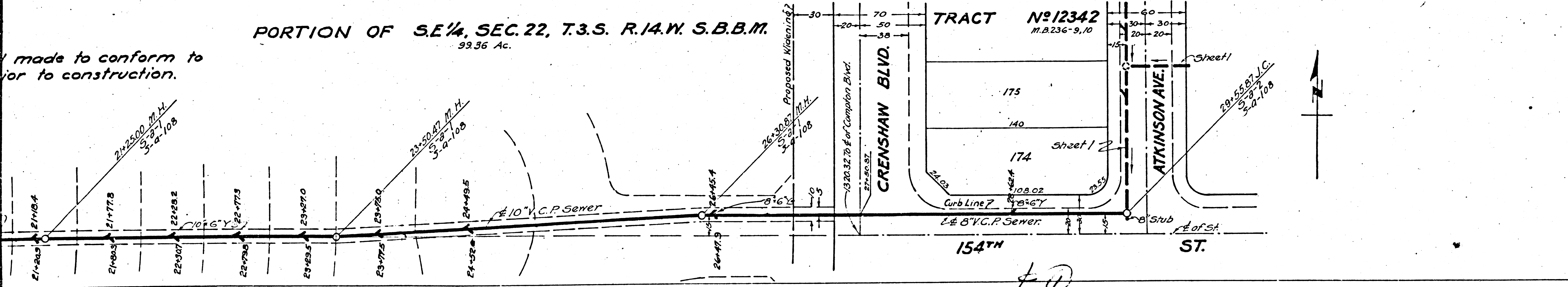


M3

M6



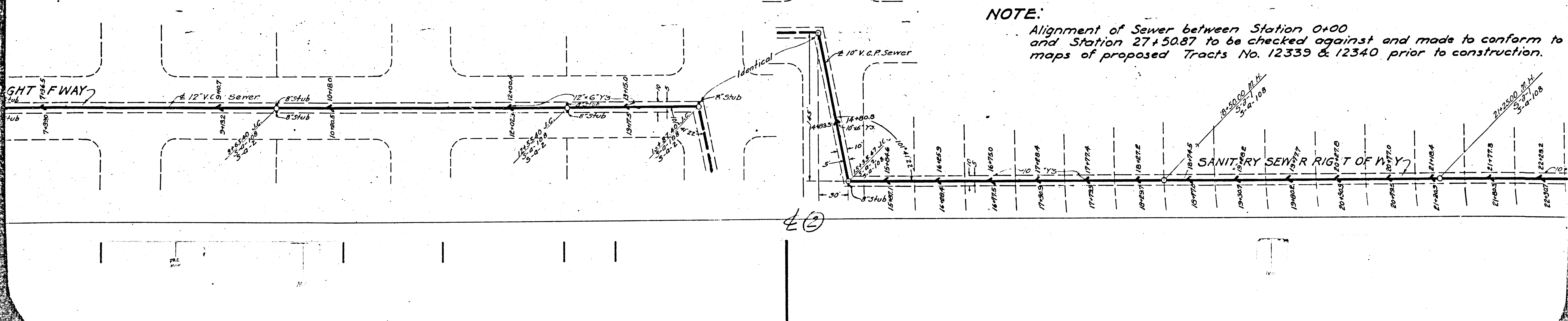
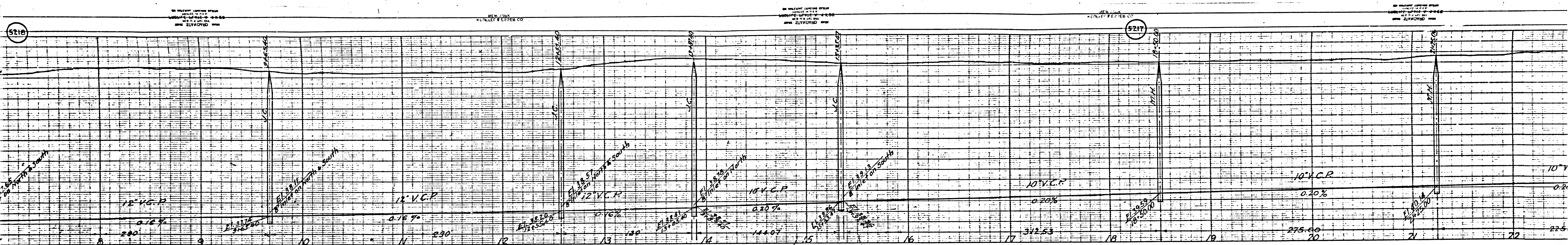
PROFILE, ALIGNMENT AND GRADE OF
SANITARY SEWERS
 TO BE CONSTRUCTED IN
SANITARY SEWER RIGHT OF WAY
 IN SE 1/4 SEC. 22, T.15 S. R.14 W. S.B.M.
 AND IN PORTIONS OF
154TH STREET
 AND
CRENSHAW BLVD.
 PRIVATE CONTRACT NO. 154
 W.S. 25
SHEET 3 OF 3 SHEETS
 PREPARED IN THE OFFICES OF
 HARRY GILBERT
 BY *H. S. Gilbert*
 REG. C.E. NO. 1791
 FOR LEGEND
 SEE PLAN NO. S-8-64.
 JUNE 1941



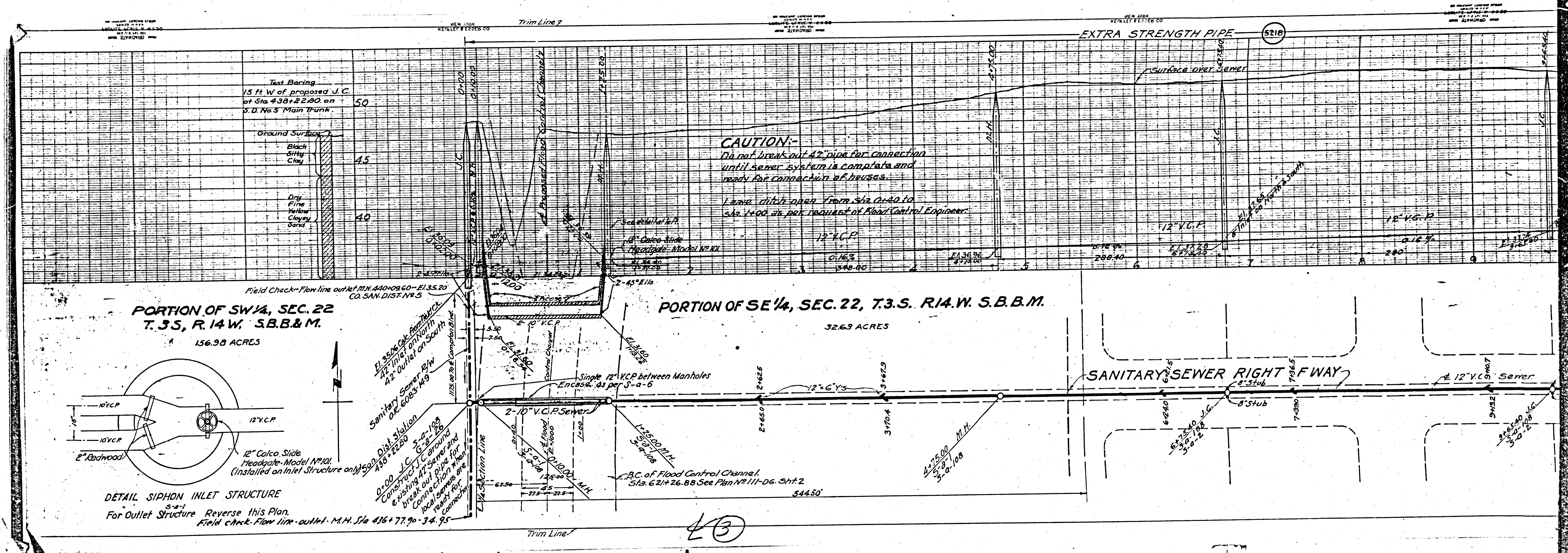
PORTION OF S.E. 1/4, SEC. 22, T.3.S. R.14.W. S.B.M.
 99.36 Ac.
TRACT No 12342
 M.B. 236-9, 10
 COUNTY OF LOS ANGELES, CALIFORNIA.
 APPROVED *Alfred Jones*
 COUNTY ENGINEER
 APPROVED *C.R. Compton*
 ACTING CHIEF ENGINEER OF COUNTY
 SANITATION DISTRICT NO. 5
 CHECKED BY *A. Boston Collins* 1941
 OFFICE OF COUNTY ENGINEER, REG. C.E. NO. 1882
 Trim Line
 A.B. 733

made to conform to
 prior to construction.

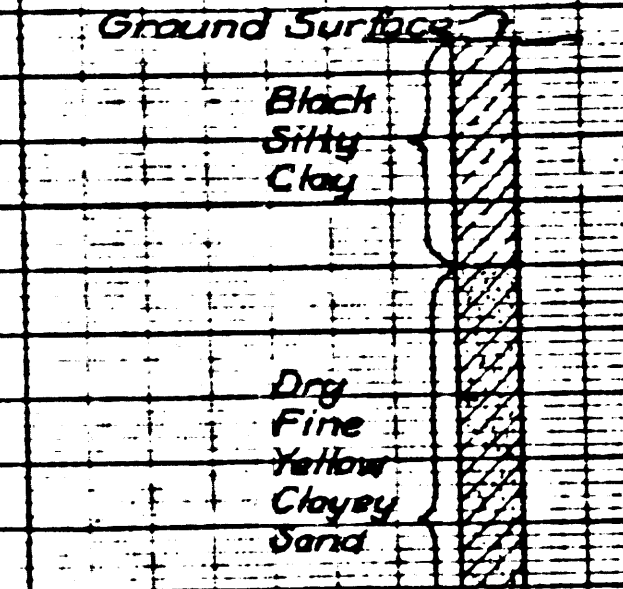
L.O.



NOTE:
 Alignment of Sewer between Station 0+00
 and Station 27+50.87 to be checked against and made to conform to
 maps of proposed Tracts No. 12339 & 12340 prior to construction.



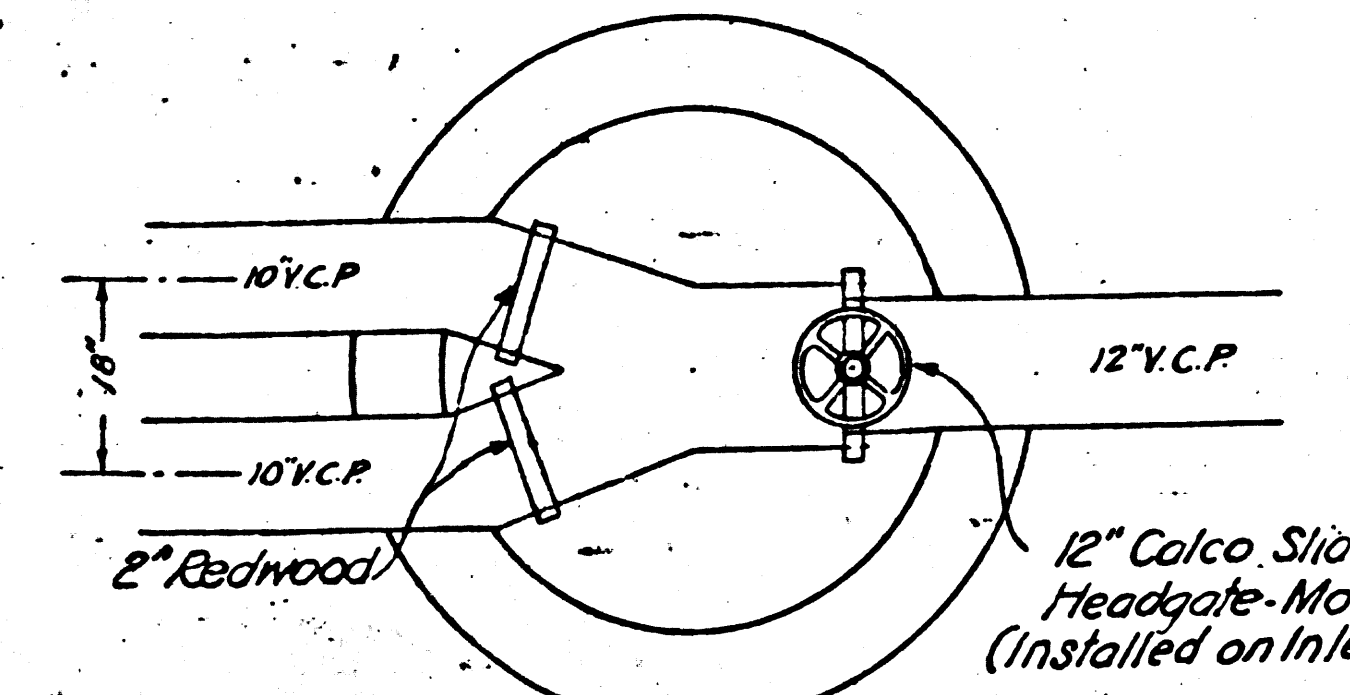
Test Boring
15 ft. W of proposed J.C.
at Sta 430+22.80 on
S.D. No. 5 Main Trunk



CAUTION:-
Do not break out 42" pipe for connection
until sewer system is complete and
ready for connection of houses.
Leave ditch open from Sta. 0+00 to
Sta. 1+00 as per request of Flood Control Engineer.

PORTION OF SW 1/4, SEC. 22
T. 3 S., R. 14 W., S.B.B. & M.
156.98 ACRES

PORTION OF SE 1/4, SEC. 22, T. 3 S., R. 14 W., S.B.B. & M.
32.63 ACRES



DETAIL SIPHON INLET STRUCTURE
5-4-1
For Outlet Structure Reverse this Plan.
Field check flow line outlet M.H. Sta 436+77.90-34.95

SANITARY SEWER RIGHT OF WAY

43