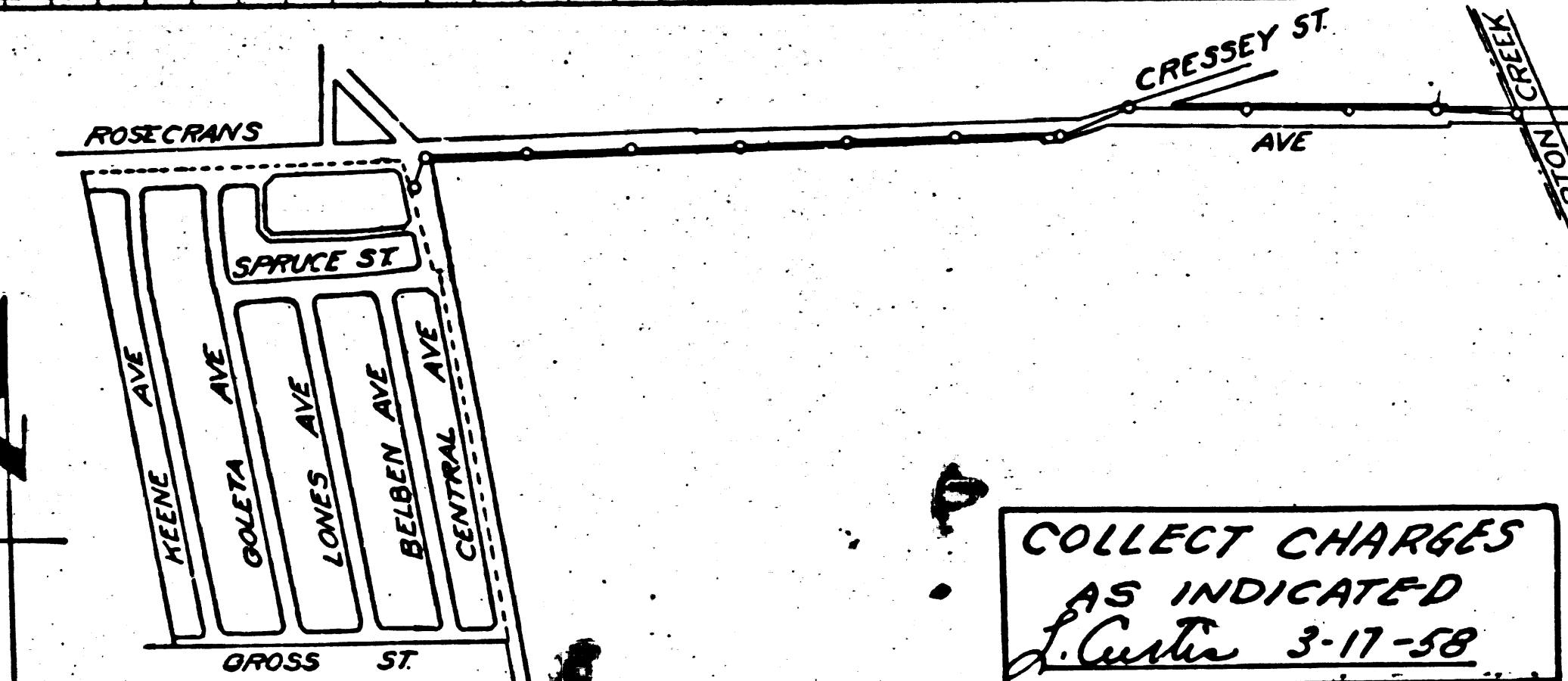


PROFILE, ALIGNMENT AND GRADE OF
SANITARY SEWERS
 TO BE CONSTRUCTED IN
ROSECRANS AVE.
 BETWEEN COMPTON CREEK AND CENTRAL AVE.
 PRIVATE CONTRACT NO. 173
 W.S. 26
 SHEET 1 OF 1 SHEET
 PREPARED IN THE OFFICE OF
FREDERICK C. STILSON
 BY *Frederick C. Stilson*
 REG. C.E. NO. 1670
 JAN. 1942
 SCALE: VERT. 1" = 4'
 HORIZ. 1" = 40'

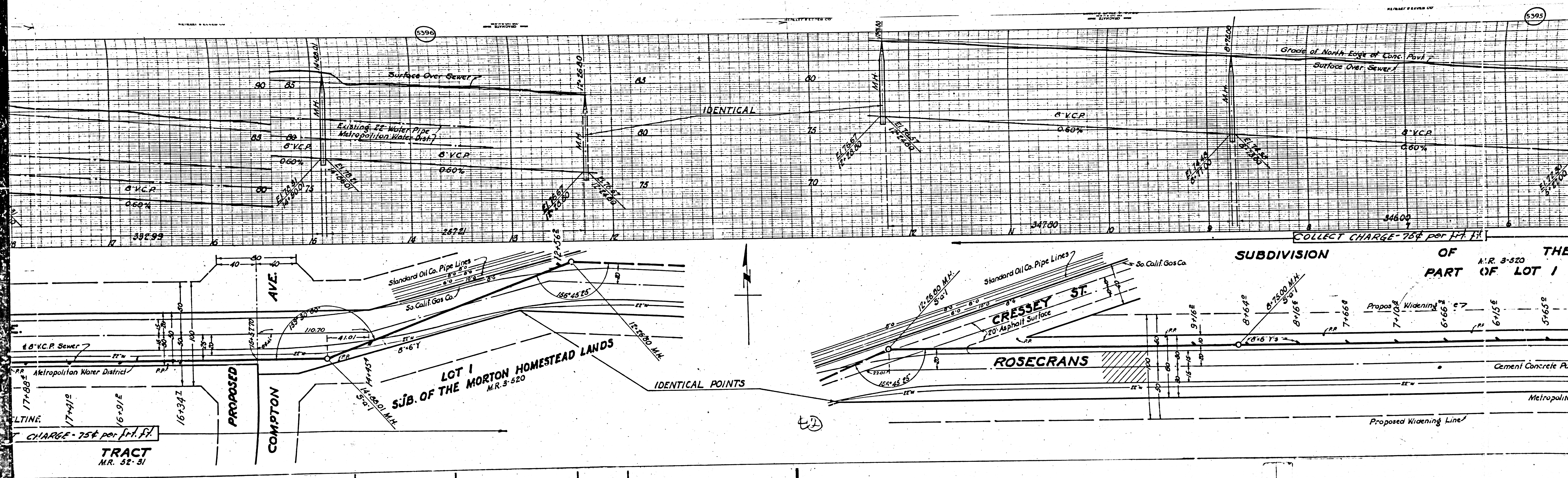


FOR LEGEND
 SEE PLAN NO. S-6-64
 NOTE:
 GRADES TO WHICH THIS IMPROVEMENT IS TO BE CONSTRUCTED ARE SHOWN ON PLANS AND PROFILE. GRADE POINTS FOR TOP OF CURB, CENTER LINE OF STREET OR CENTER LINE OF ALLEY ARE SHOWN BY CIRCLES ON PROFILES. AT ALL POINTS BETWEEN DESIGNATED POINTS THE GRADE SHALL BE ESTABLISHED SO AS TO CONFORM TO A STRAIGHT LINE DRAWN BETWEEN SAID DESIGNATED POINTS.
 ELEVATIONS ARE IN FEET ABOVE U.S. DATUM OR MEAN SEA LEVEL.
 THIS DRAWING AND THE DATA HEREON ARE HEREBY MADE A PART OF THE SPECIFICATIONS. THE CONTRACTOR SHALL BE CONSIDERED TO HAVE AGREED TO THE SPECIFICATIONS ON FILE IN THE OFFICE OF THE COUNTY ENGINEER AND SHALL BE PROSECUTED ONLY IN THE PRESENCE OF THE COUNTY ENGINEER. BEFORE WORK CAN BE STARTED, THE CONTRACTOR MUST OBTAIN A PERMIT TO EXCAVATE IN COUNTY STREETS FROM THE L.A. COUNTY ROAD DEPT. 1134 HALL OF RECORDS, AND MAKE A DEPOSIT WITH THE COUNTY ENGINEER, 700 UNION LEAGUE BUILDING, SUFFICIENT TO COVER THE COST OF CONSTRUCTION INSPECTION AND RECORD PLANS.
COUNTY OF LOS ANGELES, CALIFORNIA.
 APPROVED *Alfred J. ...*
 COUNTY ENGINEER
 APPROVED *Frederick C. Stilson*
 CHIEF ENGINEER OF COUNTY SANITATION DISTRICT NO. 1
 CHECKED BY *Paul E. ...*
 OFFICE OF COUNTY ENGINEER REG. C.E. NO. 4858
 JUN. 27 1942

COLLECT CHARGES
 AS INDICATED
3-17-58

APPROVED *H.W. ...*
 CITY ENGINEER, CITY OF COMPTON

1336 C 81153



5398

5395

IDENTICAL

COLLECT CHARGE - 75¢ per Ft. Ft.

SUBDIVISION OF THE PART OF LOT 1 A.R. 3-520

LOT 1 S.J.B. OF THE MORTON HOMESTEAD LANDS M.R. 3-520

CRESSEY ST.

ROSECRANS

PROPOSED COMPTON AVE.

TRACT M.R. 52-31

Proposed Widening Line

Cement Concrete Pavement

Metropolitan

IDENTICAL POINTS

CHARGE - 75¢ per Ft. Ft.

Metropolitan Water District

48\"/>

17+83.5

17+91.2

16+91.6

16+34.7

106+37.0

40

40

80

80

80

80

80

80

80

80

80

80

80

80

80

80

80

80

80

80

80

80

80

80

80

80

80

80

80

80

80

80

80

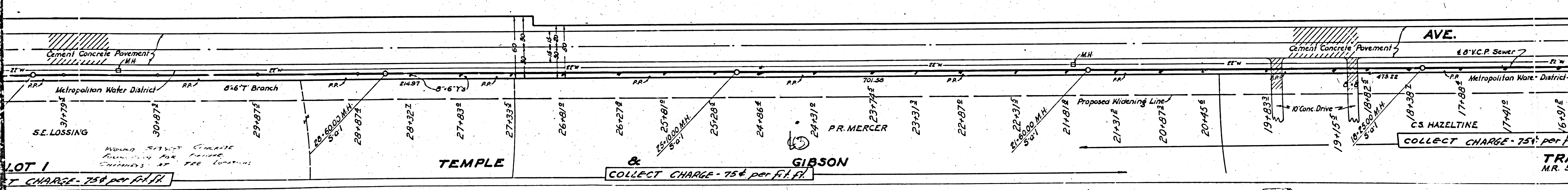
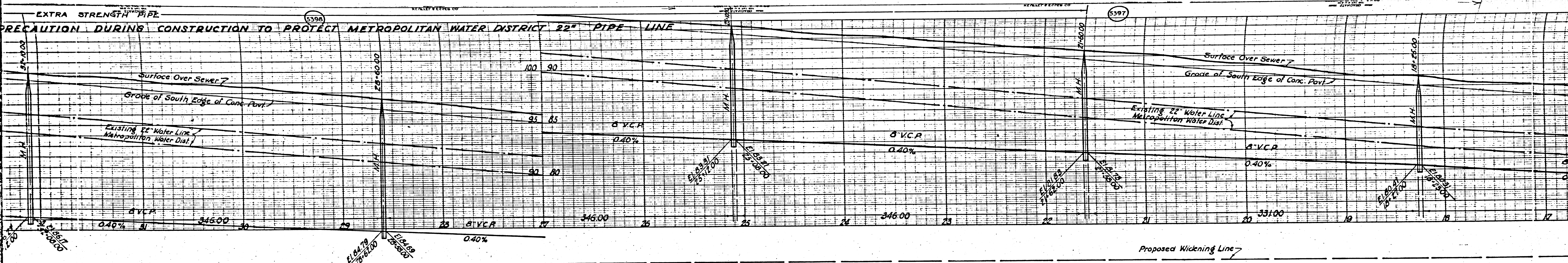
80

80

80

80

80

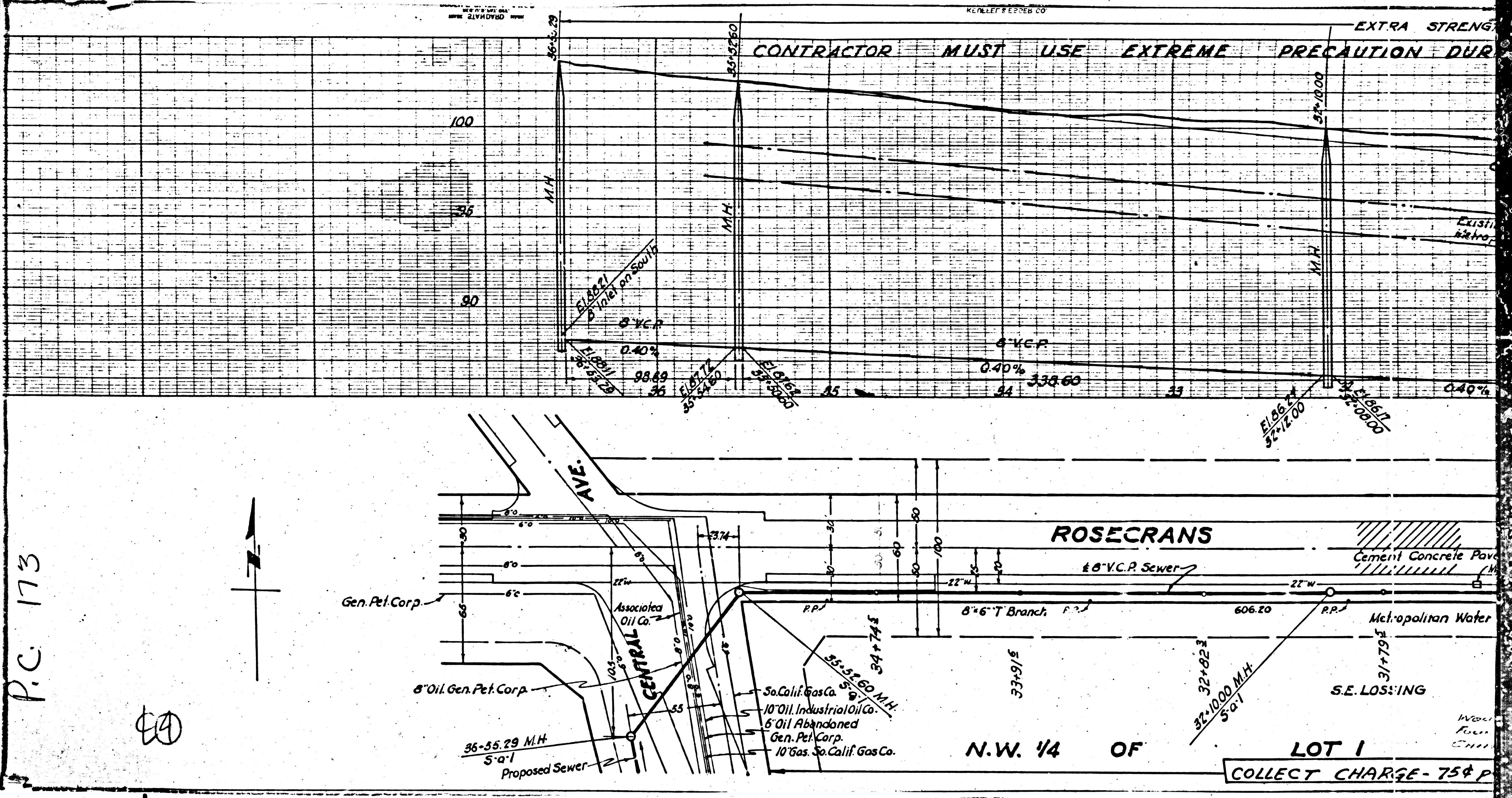


LOT 1
CHARGE - 75¢ per ft. ft.

TEMPLE & GIBSON
COLLECT CHARGE - 75¢ per ft. ft.

COLLECT CHARGE - 75¢ per ft. ft.

TRA
MR. 53



P.C. 173

⓪