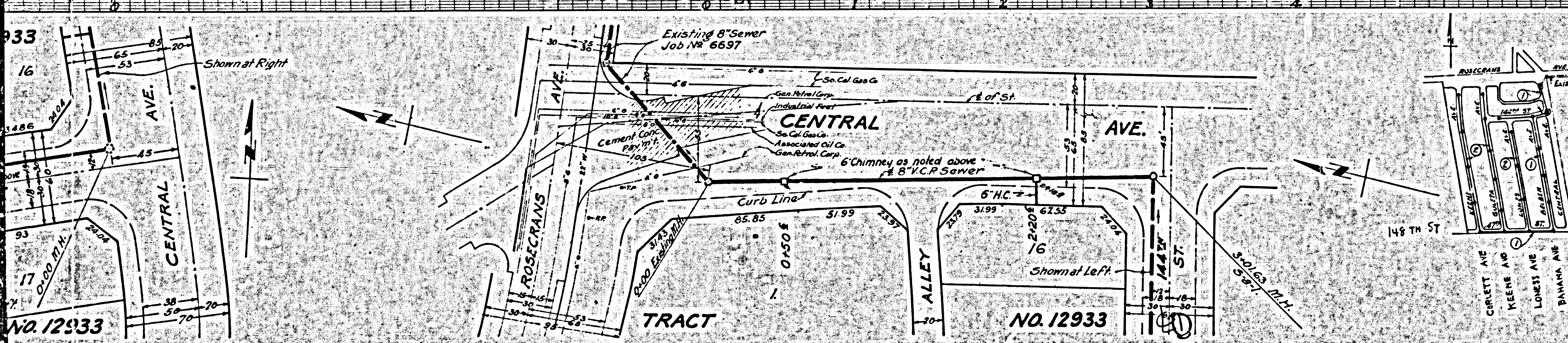


PROFILE ALIGNMENT AND GRADE OF	
SANITARY SEWERS	
TO BE CONSTRUCTED IN	
CENTRAL AVE	
BETWEEN 144 TH ST AND ROSECRANS AVE	
144TH ST	
BETWEEN CENTRAL AVE AND SOLITA AVE	
BELDEN AVE	
BETWEEN 147 TH ST AND 148 TH ST	
147TH ST	
BETWEEN BELDEN AVE AND KEYNE AVE	
PRIVATE CONTRACT NO. 173	
W.S. 26	
SHEET 1 OF 2 SHEETS	
JAN. 1942	
PREPARED IN THE OFFICE OF	
FREDERICK C. STILSON	
By <i>Frederick C. Stilson</i>	
REG. C.E. NO. 1670	
FOR LEGEND	
SEE PLAN NO. 80-64	
NOTE:	
GRADES TO WHICH THIS IMPROVEMENT IS TO BE CONSTRUCTED ARE SHOWN ON PLANS AND PROFILE. GRADE POINTS FOR TOP OF CURB, CENTER LINE OF STREET OR CENTER LINE OF ALLEY ARE SHOWN BY CIRCLES ON PROFILES. AT ALL POINTS BETWEEN DESIGNATED POINTS THE GRADE SHALL BE ESTABLISHED SO AS TO CONFORM TO A STRAIGHT LINE DRAWN BETWEEN SAID DESIGNATED POINTS.	
ELEVATIONS ARE IN FEET ABOVE U.S. DATUM OR MEAN SEA LEVEL.	
THIS DRAWING AND THE DATA HEREON ARE HEREBY MADE A PART OF THE SPECIFICATIONS.	
WORK SHALL BE CONSTRUCTED ACCORDING TO SPECIFICATIONS ON FILE IN THE OFFICE OF THE COUNTY ENGINEER AND SHALL BE PROSECUTED ONLY IN THE PRESENCE OF THE COUNTY ENGINEER.	
BEFORE WORK CAN BE STARTED, THE CONTRACTOR MUST OBTAIN A PERMIT TO EXCAVATE IN COUNTY STREETS FROM THE L.A. COUNTY ROAD DEPT., 1104 HALL OF RECORDS, AND MAKE A DEPOSIT WITH THE COUNTY ENGINEER, 700 UNION LEAGUE BUILDING, SUFFICIENT TO COVER THE COST OF CONSTRUCTION INSPECTION AND RECORD PLANS.	



COUNTY OF LOS ANGELES, CALIFORNIA.

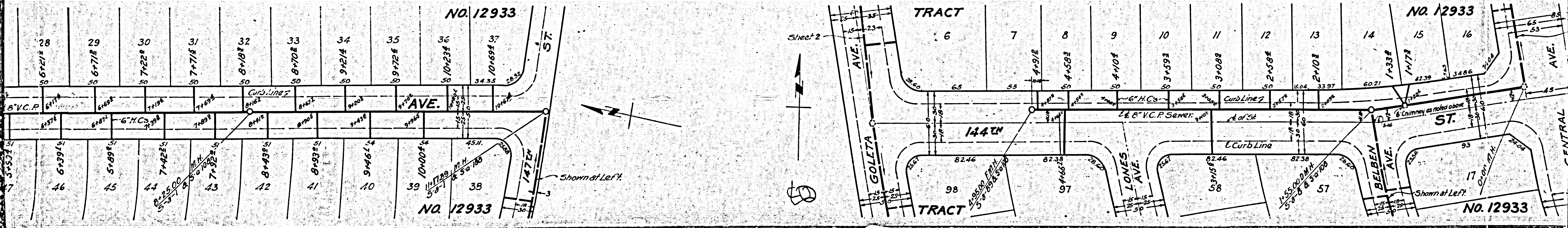
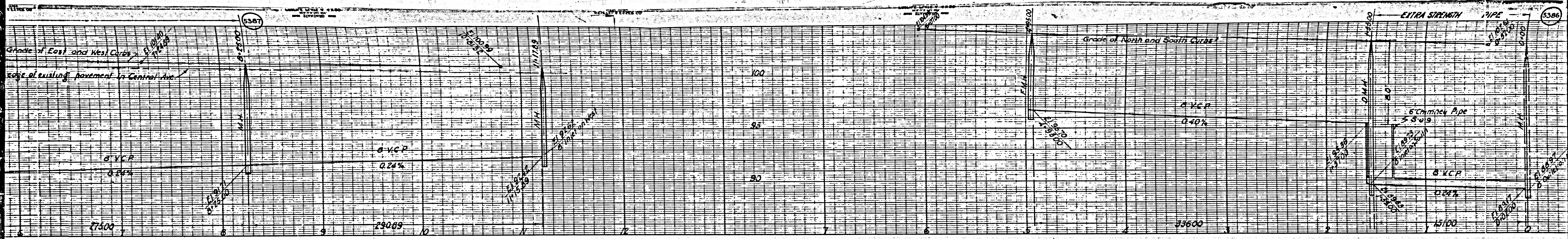
APPROVED *Alfred Jones*
COUNTY ENGINEER

APPROVED *Frederick C. Stilson*
CHIEF ENGINEER OF COUNTY
SANITATION DISTRICT NO. 6

CHECKED BY *Paul E. Kuehl* 3-2-1942
OFFICE OF COUNTY ENGINEER, REG. C.E. NO. 4863

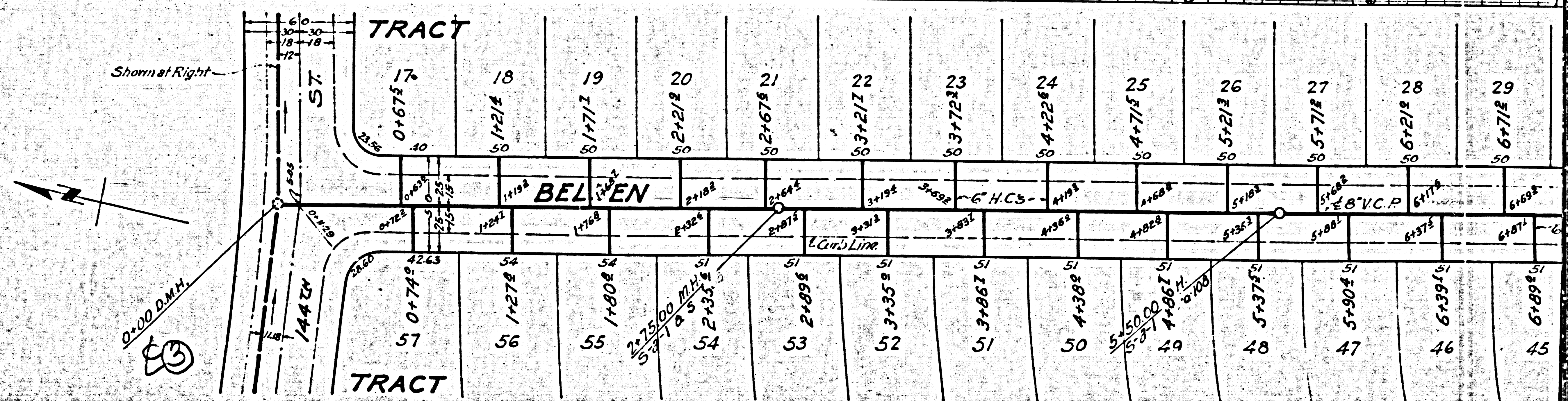
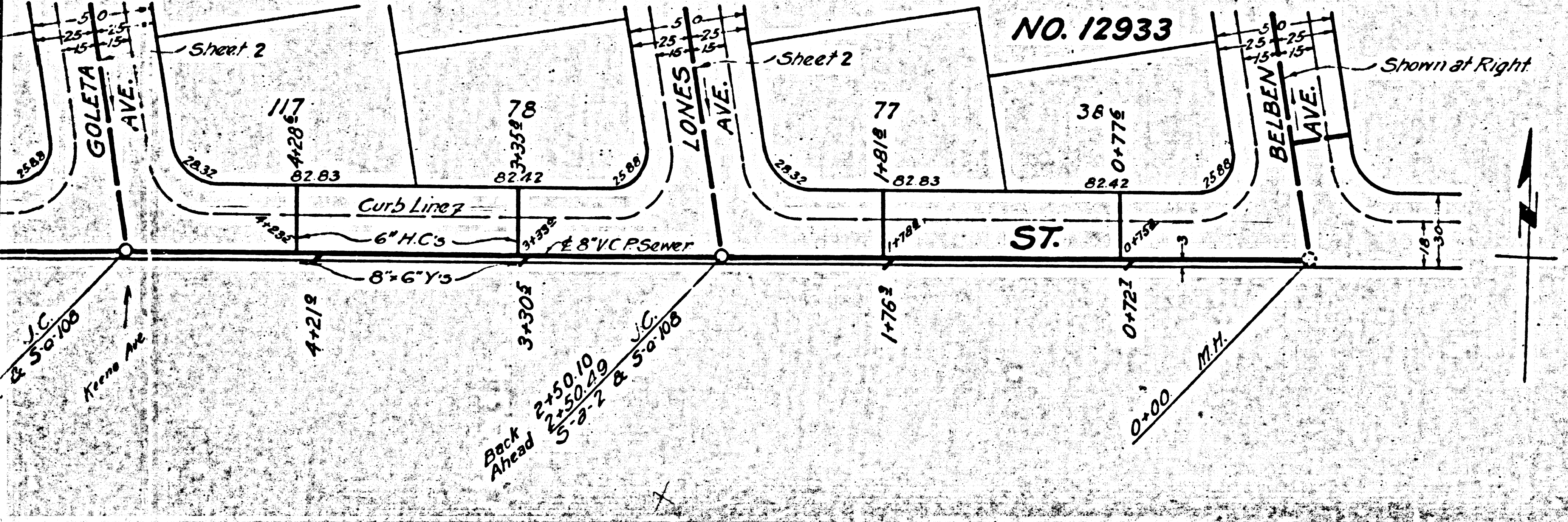
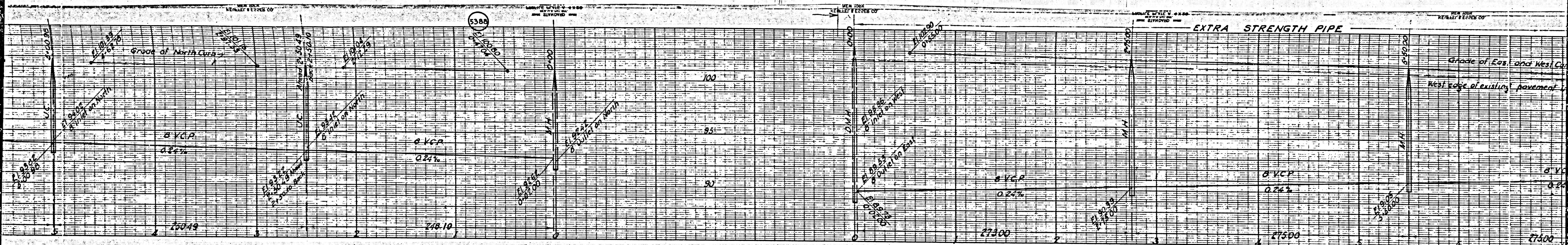
COUNTY OF LOS ANGELES
RESERVED
MAY 6 1942
SANITARY DIVISION

B.C. 16132-2 SHEET 1



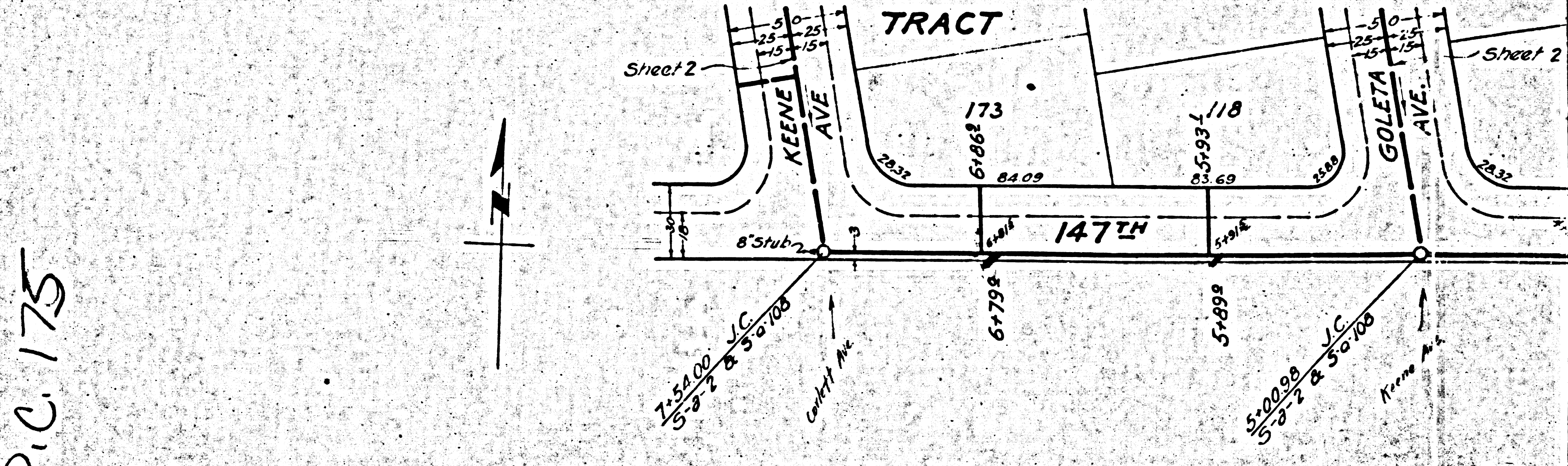
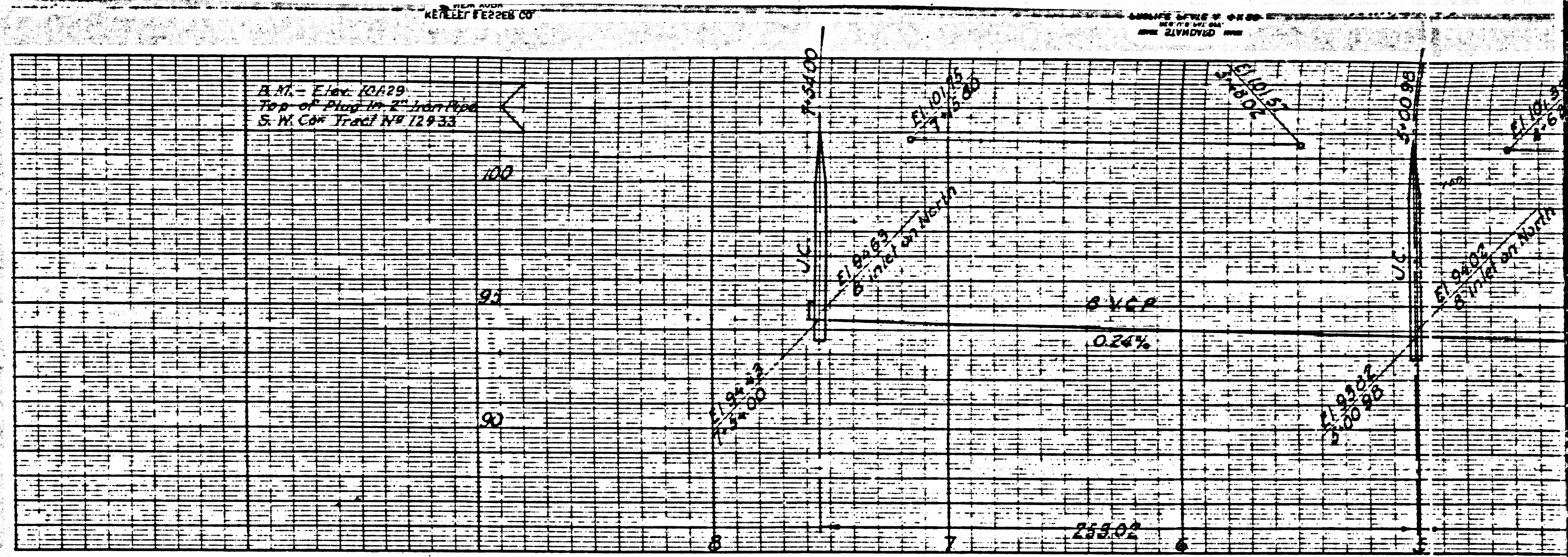
M3

M8



M3

M3



P.C. 175

5389

NEW YORK
REINOLD & BECKER CO.

PROFILE, ALIGNMENT AND GRADE OF
SANITARY SEWERS
 TO BE CONSTRUCTED IN
LONES AVE.
 BETWEEN 1479 ST. AND 1447 ST.
GOLETA AVE.
KEENE AVE.
 BETWEEN 1479 ST. AND HOBECRAK AVE.

2

PRIVATE CONTRACT NO. 175
 W. S. 26
 SHEET 2 OF 2 SHEETS

PREPARED IN THE OFFICE OF

FREDERICK C. STILSON

By Frederick C. Stilson
 REG. C.E. NO. 1670

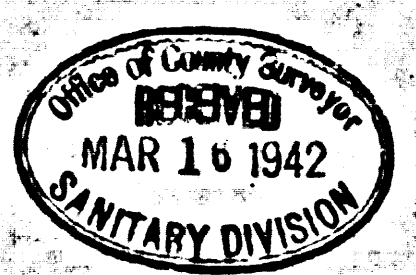
FOR LEGEND
 SEE PLAN NO. 8-9-64

FOR CONSTRUCTION NOTES, SEE SHEET 1

COUNTY OF LOS ANGELES, CALIFORNIA.

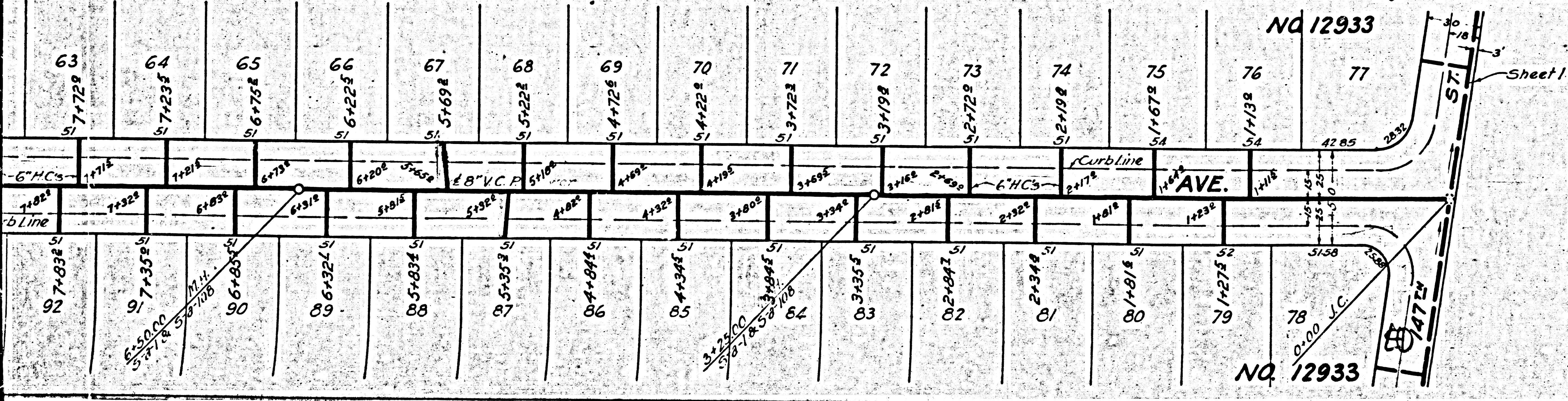
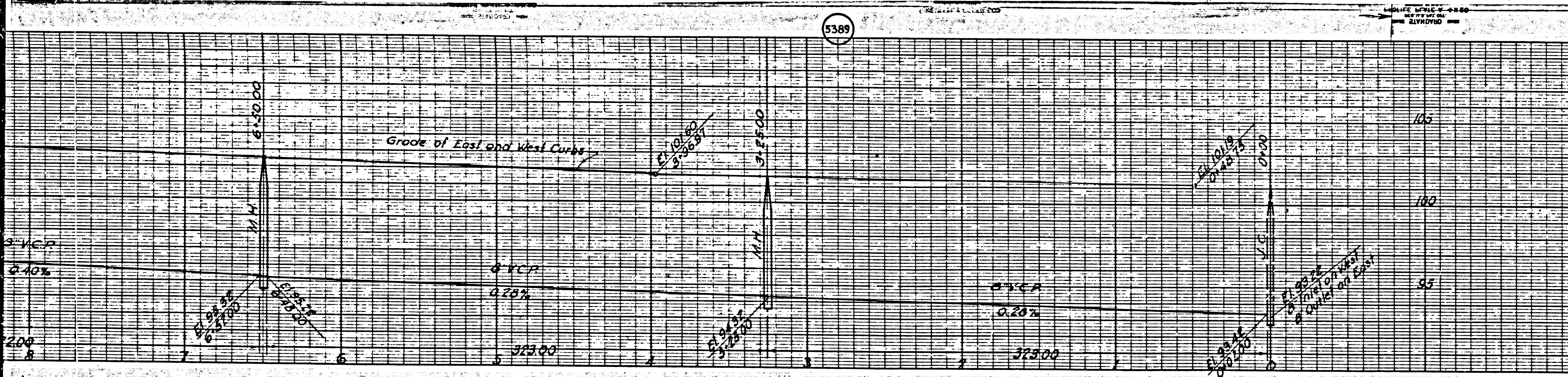
APPROVED: Alfred Jones
 COUNTY ENGINEER

APPROVED: Arthur
 CHIEF ENGINEER OF COUNTY
 SANITATION DISTRICT NO. 8



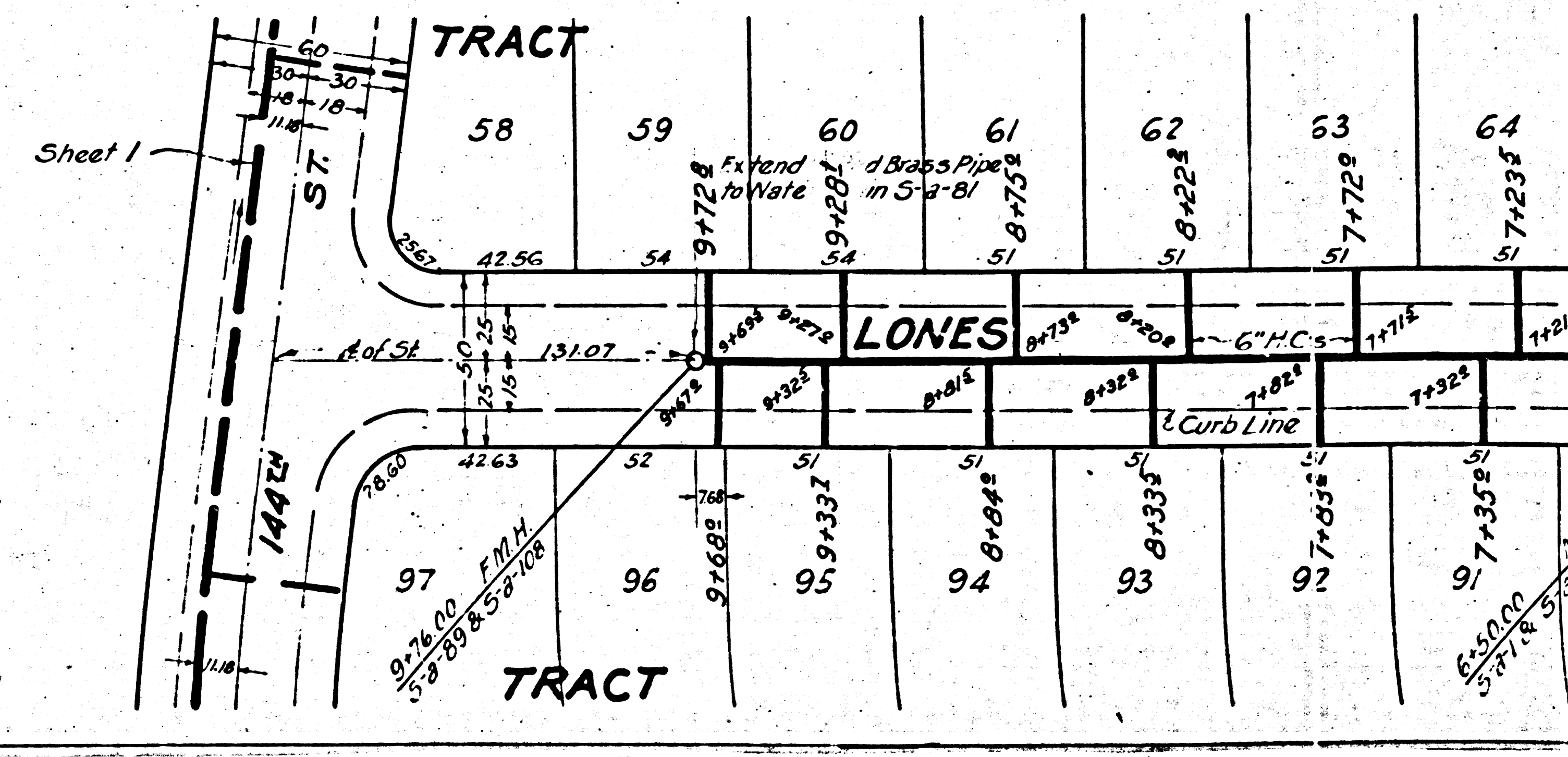
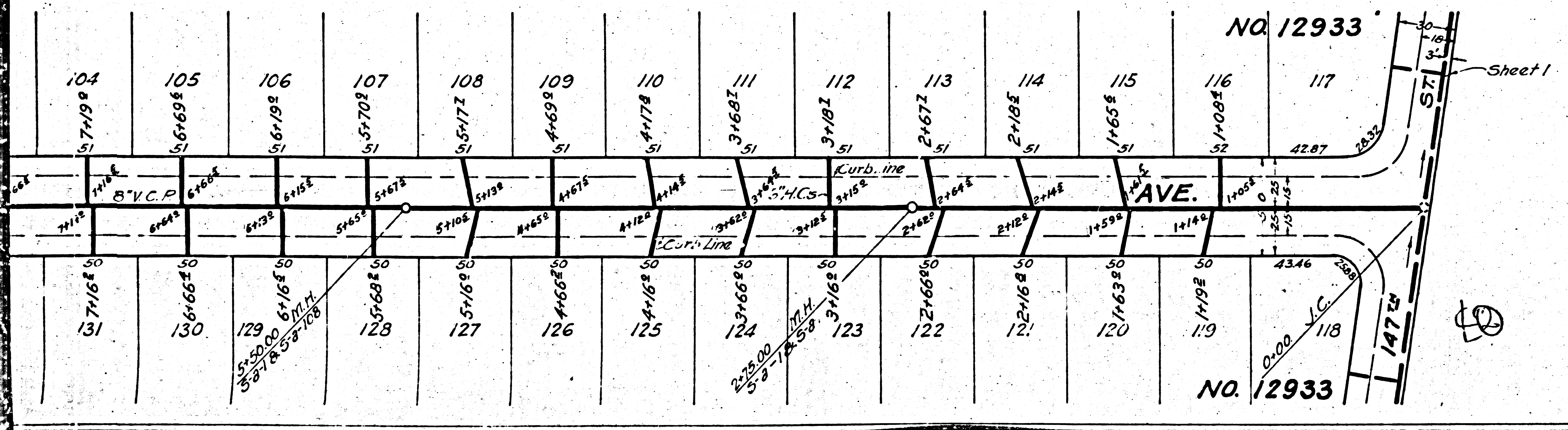
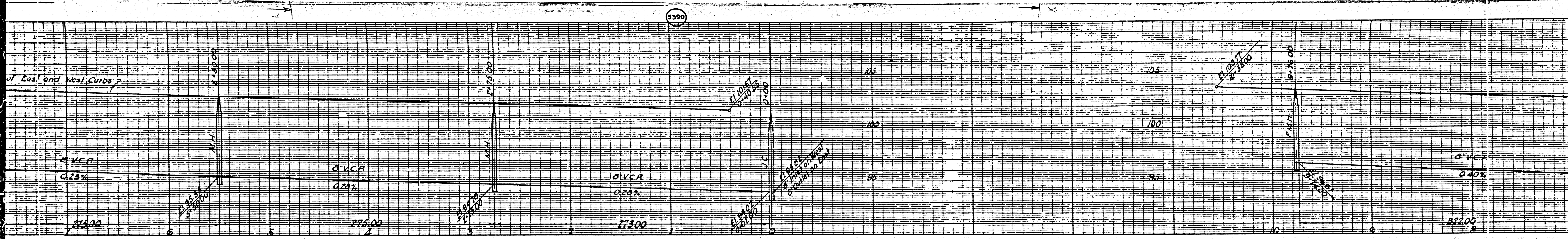
CHECKED BY Paul E. Hume 3-2-1942
 OFFICE OF COUNTY ENGINEER, REG. C.E. NO. 4868

B.C. WEISS - SHEETS
 B.C. WEISS & SONS



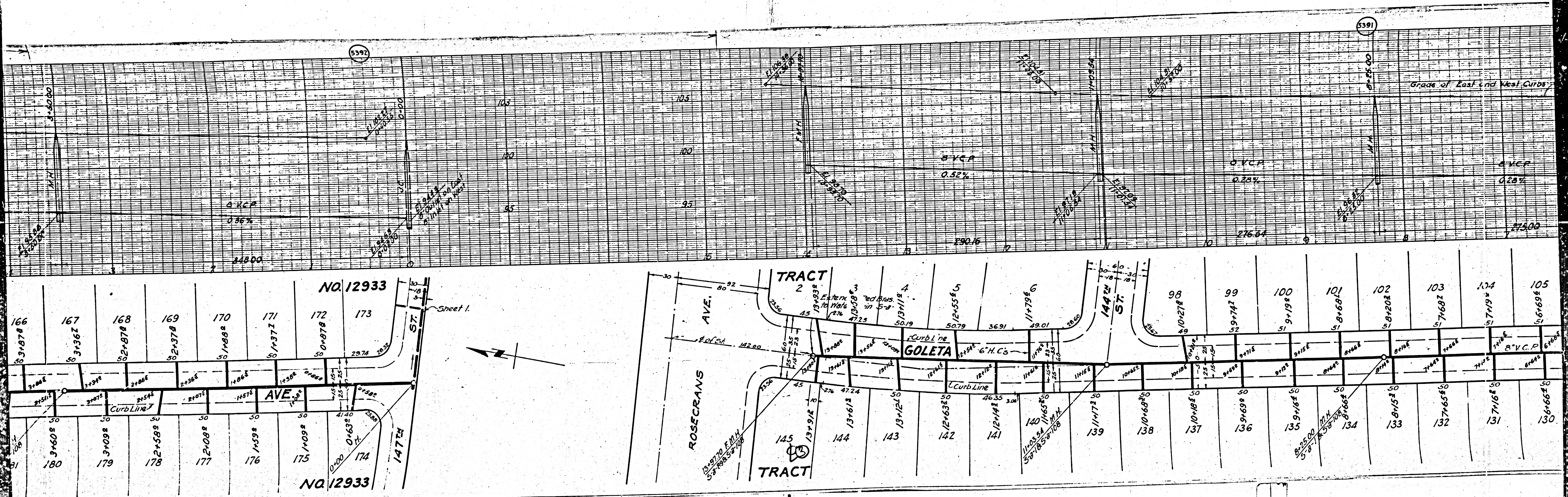
M3

M5

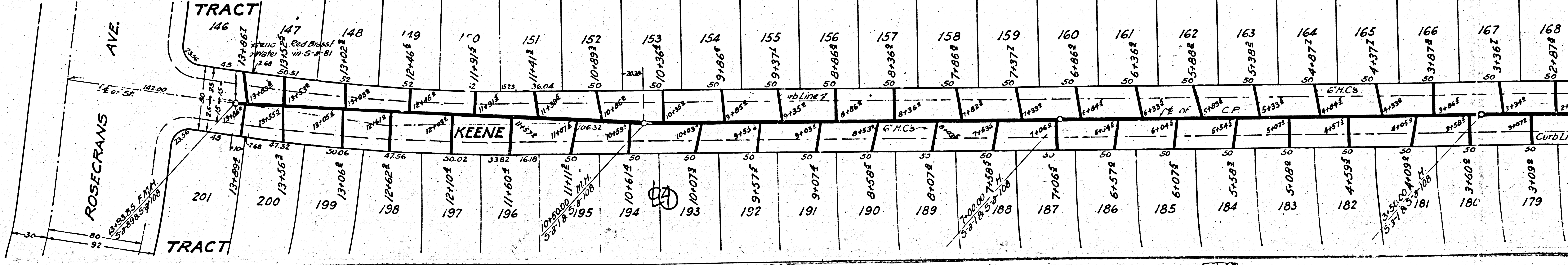
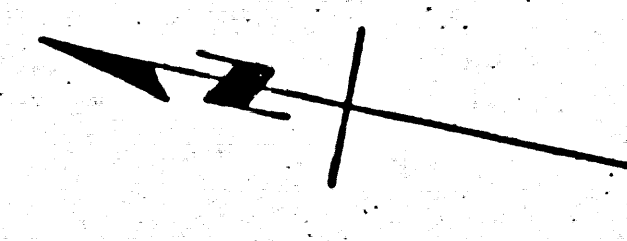
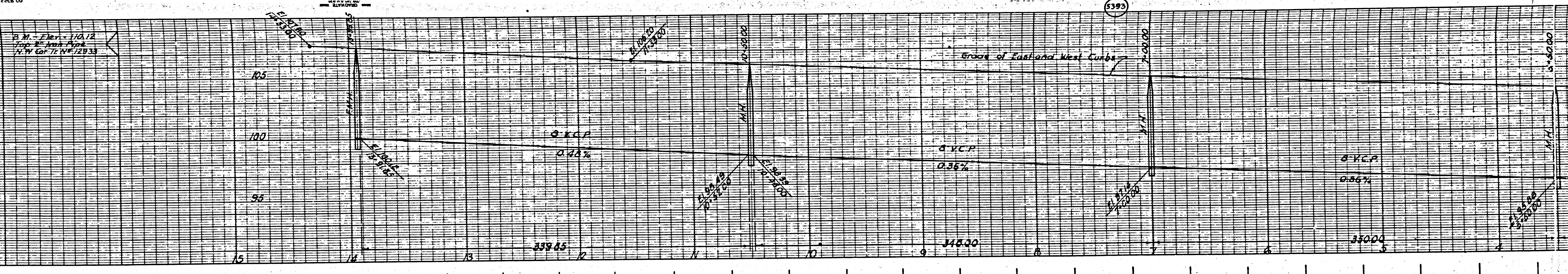


M3

M5



D. M. Egan, 110.12
17th St. New York
N.Y. Cop. 75 N.P. 2933



M3

M3