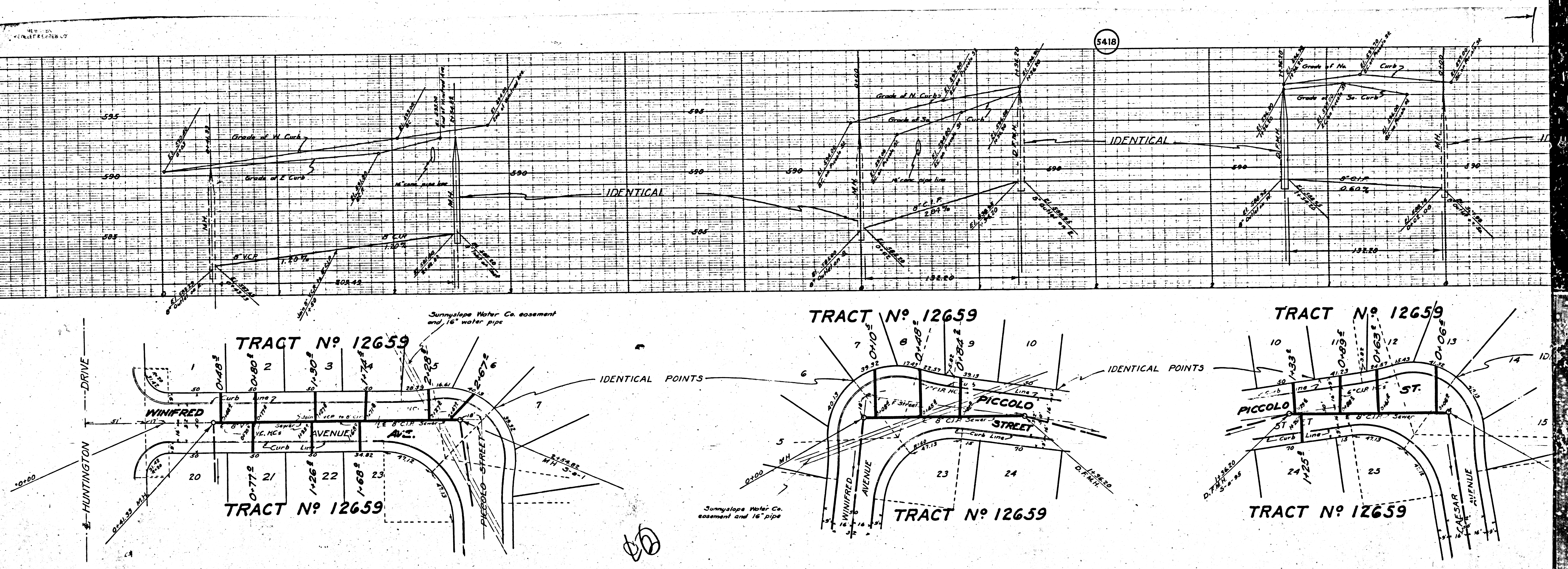


PC177



M2

M5

5417

RM. ELEV. 583.80
 La Plaza Dr and Huntington Dr.
 E. at T. in Hood west SW. cor. N. Dr.

USE SPECIAL MANHOLE FRAMES AND COVERS 18" DIA. TOP
 USE STANDARD STRENGTH PIPE
 USE SEWER JOINT COMPOUND FOR ALL VITRIFIED CLAY PIPE
 USE LEAD-POW-REL. CAST-IRON PIPE JOINTS
 CONSTRUCT HOUSE CONNECTIONS WITH INVERT AT PROPERTY
 LINE 3 FEET BELOW CURB GRADE
 ALL FLUSHING MANHOLES TO BE CONNECTED TO
 WATER MAIN WITH 3/4" RED BRASS PIPE AS PER S. & B.
 ENCASE 4 FEET OF SEWER AT POINTS OF INTERFERENCE
 WITH POLES AS PER S. & B.

PROFILE ALIGNMENT AND GRADE OF
SANITARY SEWER SYSTEM
 TO BE CONSTRUCTED IN
**WINIFRED AVE., CAESAR AVE.
 AND PICCOLO ST.**
 ADJACENT TO HUNTINGTON DR.
SANITARY SEWER RIGHT OF WAY
 IN TRACT N° 12659

PRIVATE CONTRACT N° 177
 W.S. N° 44
SHEET N° 1 OF 2 SHEETS
 SCALES VERT. 1" = 4'
 HORIZ. 1" = 40'
 JAN. 1942

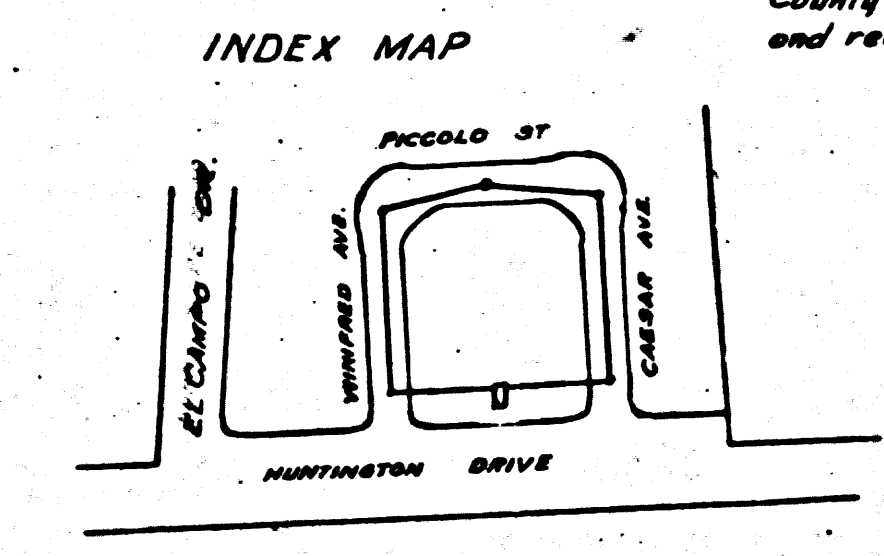
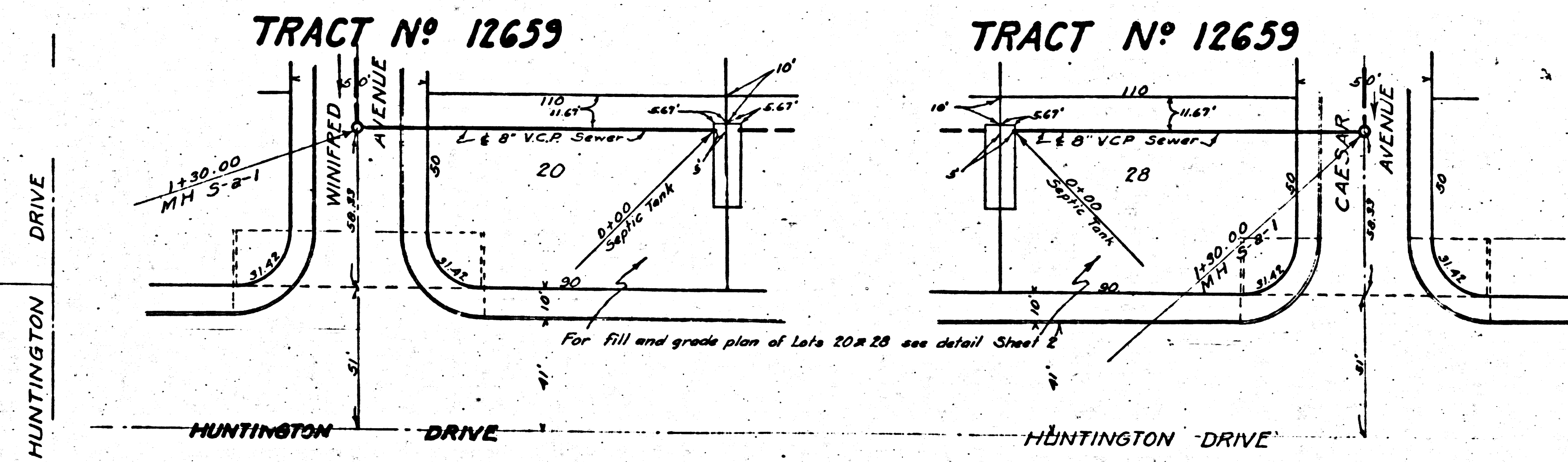
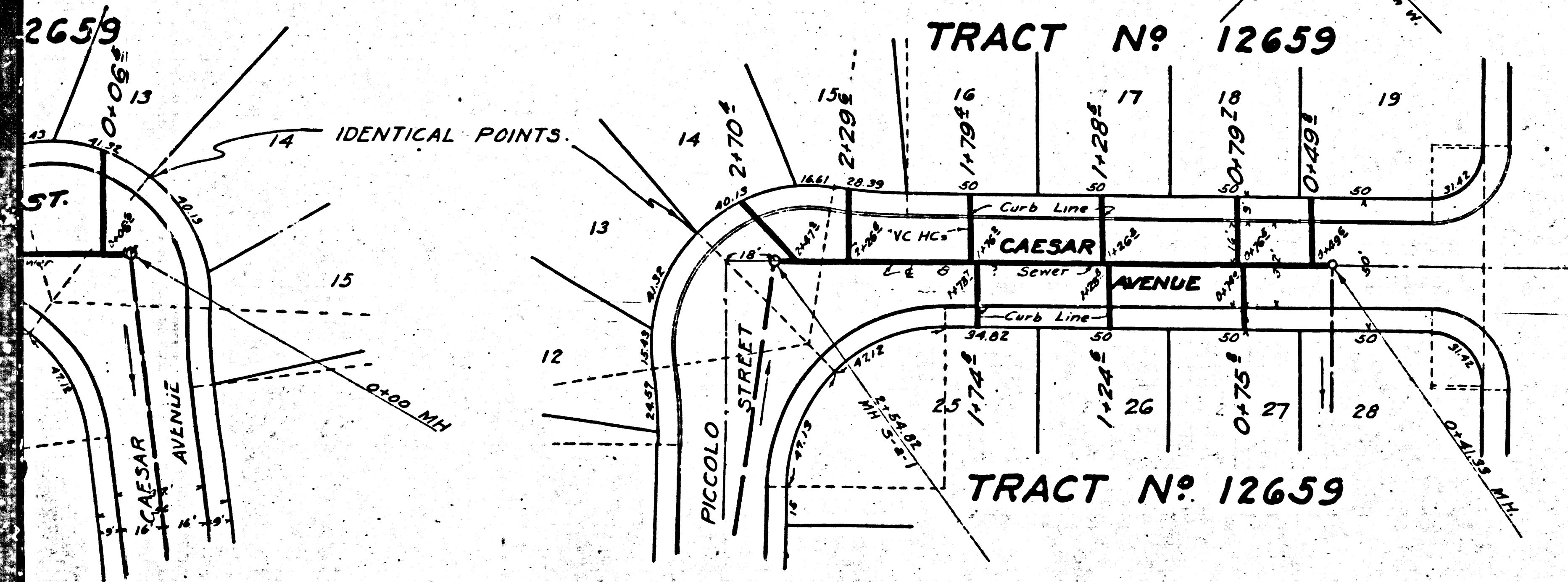
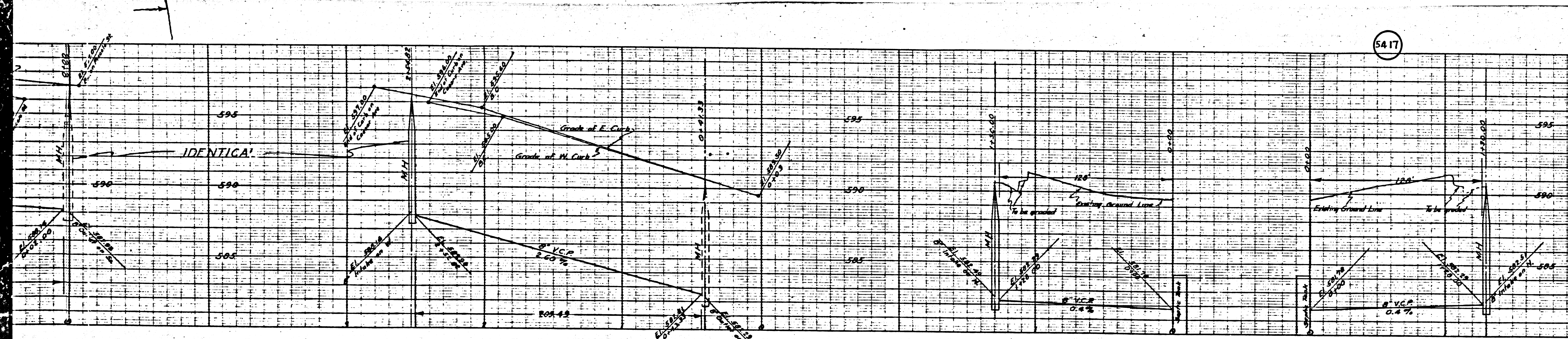
OW. FINLEY ENGINEER
 BY *O. W. Finley*
 RE. N° 3926
 FOR LEGEND
 SEE PLAN NO. 3-a-64

Note:
 Grades to which the improvement is to be constructed are shown on plans and profile.
 Grade points for top of curb, center line of street or center line of alley are shown by circles on
 profiles. At all points between designated points the grade shall be established so as to conform
 to a straight line drawn between said designated points.
 Elevations are in feet above U.S.C.S. datum or mean sea level.
 This drawing and the data hereon are hereby made a part of the specifications.
 Work shall be constructed according to specifications on file in the office of the County Engineer
 and shall be prosecuted only in the presence of the County Engineer.
 Before work can be started, the contractor must obtain a permit to excavate in county
 streets from the L.A. county Road Dept. 1104 Hall of Records and make a deposit with
 County Engineer, 700 Union League Bldg. sufficient to cover the cost of construction inspection
 and record plans.

COUNTY OF LOS ANGELES, CALIFORNIA.

Approved *Alfred J. Jones*
County Engineer

Checked by *Paul A. L. ...* 4-13-1942
Office of Co. Engr. Reg. C. E. N° 4068



φ 0