

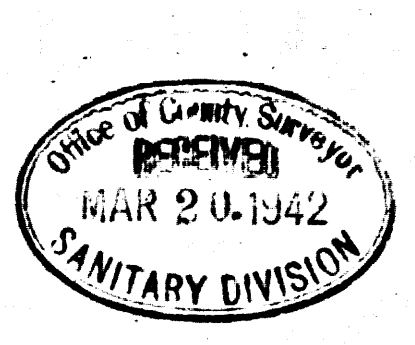
PRIVATE CONTRACT No. 179  
 PROFILE, ALIGNMENT AND GRADE OF  
**SANITARY SEWERS**  
 TO BE CONSTRUCTED IN  
 12TH STREET ARTESIA  
 BETWEEN WALNUT ST. AND MARTHA ST.

ONE SHEET  
 COUNTY OF LOS ANGELES, CALIFORNIA  
 ALFRED JONES COUNTY ENGINEER  
 RECOMMENDED *[Signature]* CHIEF DEPUTY  
 APPROVED *[Signature]* COUNTY ENGINEER  
 APPROVED *[Signature]* CHIEF ENGINEER OF COUNTY SANITATION DISTRICT NO. 2

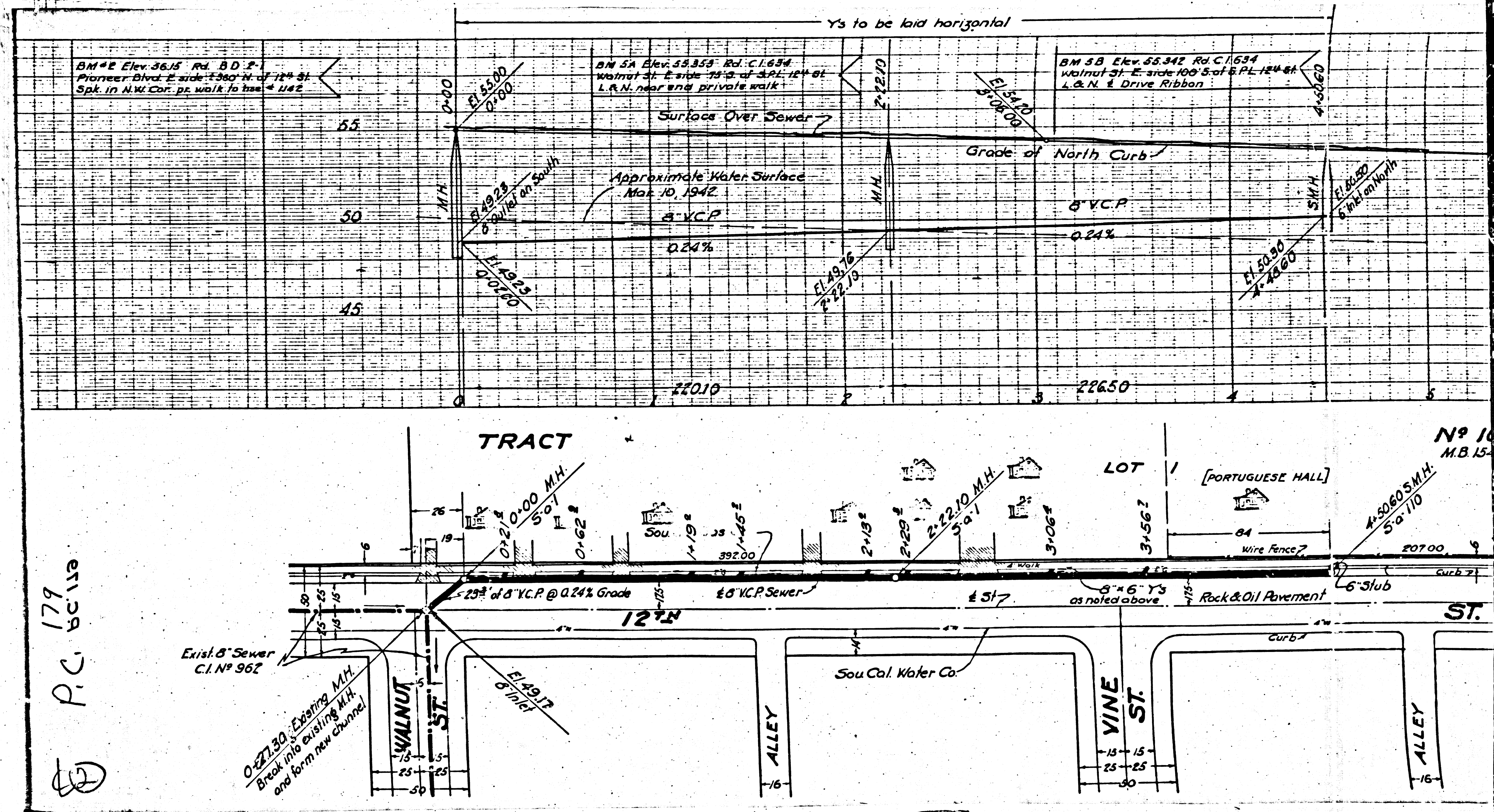
FOR LEGEND  
 SEE PLAN NO. S-0-54

NOTE:  
 GRADES TO WHICH THIS IMPROVEMENT IS TO BE CONSTRUCTED ARE SHOWN ON PLANS AND PROFILES.  
 GRADE POINTS FOR TOP OF CURB, CENTER LINE OF STREET OR CENTER LINE OF ALLEY ARE SHOWN BY  
 CIRCLES ON PROFILES. AT ALL POINTS BETWEEN DESIGNATED POINTS THE GRADE SHALL BE ESTABLISHED  
 SO AS TO CONFORM TO A STRAIGHT LINE DRAWN BETWEEN SAID DESIGNATED POINTS.  
 ELEVATIONS ARE IN FEET ABOVE U. S. G. S. DATUM OR MEAN SEA LEVEL.  
 UNIT PRICES FOR ADDITIONAL WORK WHICH MAY BE REQUIRED BUT WHICH CANNOT BE ASCERTAINED  
 IN ADVANCE, SHALL BE SUBMITTED IN THE PROPOSAL.  
 THIS DRAWING AND THE DATA HEREON ARE HEREBY MADE A PART OF THE SPECIFICATIONS.

REFERENCES		
W. S.	DESIGNED	C. HUGHES
A. B.	TRACED	N. E. BRUSHER
L. B.	CHECKED	N. GOLDMAN



COPYRECD BY CLIENT  
 3-24-42



P.C. 179

