

**PROFILE ALIGNMENT AND GRADE OF
 SANITARY SEWERS
 TO BE CONSTRUCTED IN
 SALMON AVE
 BETWEEN
 219TH ST & 218TH PL
 AND IN
 McHELEN AVE
 BETWEEN
 218TH ST & 220TH ST
 AND IN THE
 ALLEYS OF 218TH PL
 BETWEEN
 SALMON AVE & ALAMEDA ST
 SHEET 1 OF 2 SHEETS
 PREPARED IN THE OFFICE OF
 THOS. S. ARGENT
 CIVIL ENGINEER
 1234 N. GARDEN ST.
 LOS ANGELES, CALIF.**

PRIVATE CONTRACT NO. 188
 W.S. 30

NOTE
 GRADES TO WHICH THIS IMPROVEMENT IS TO BE CONSTRUCTED ARE SHOWN ON PLAN AND PROFILE. GRADE POINTS FOR TOP OF CURB CENTER LINE OF STREET OR CENTER LINE OF ALLEY ARE SHOWN BY CIRCLES ON PROFILES. AT ALL POINTS BETWEEN DESIGNATED POINTS THE GRADE SHALL BE ESTABLISHED SO AS TO CONFORM TO A STRAIGHT LINE DRAWN BETWEEN SAID DESIGNATED POINTS.
 ELEVATIONS ARE IN FEET ABOVE U.S.G.S. DATUM OR MEAN SEA LEVEL.
 THIS DRAWING AND THE DATA HEREON ARE HEREBY MADE A PART OF THE SPECIFICATIONS.
 WORK SHALL BE CONSTRUCTED ACCORDING TO SPECIFICATIONS ON FILE IN THE OFFICE OF THE COUNTY ENGINEER AND SHALL BE PROSECUTED ONLY IN THE PRESENCE OF THE COUNTY ENGINEER.
 A PERMIT TO EXCAVATE IN THE STREET MUST BE SECURED FROM THE COUNTY ROAD DEPT. BEFORE WORK IS STARTED.
 BEFORE WORK IS STARTED CONTRACTOR MUST MAKE ARRANGEMENT WITH THE COUNTY ENGINEER TO HAVE AN INSPECTOR ASSIGNED TO THE WORK AND MUST MAKE A DEPOSIT SUFFICIENT TO COVER THE COST OF CONSTRUCTION INSPECTION AND RECORD PLANS.

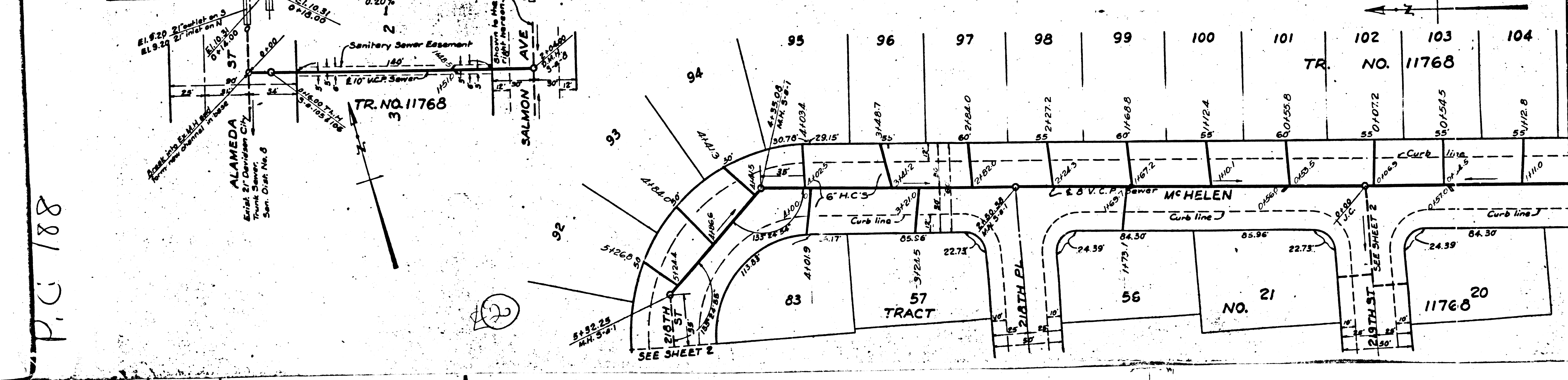
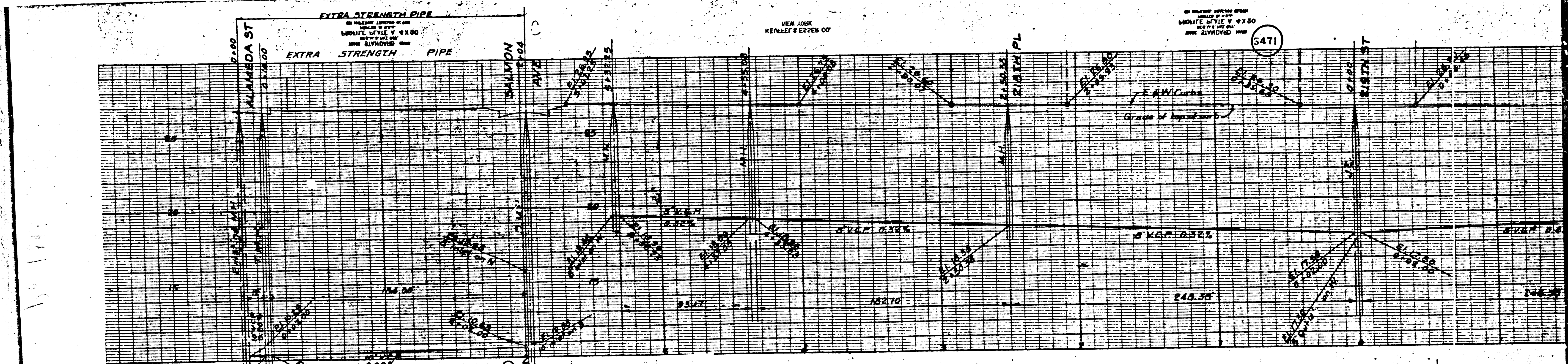
COUNTY OF LOS ANGELES CALIFORNIA
 CHECKED *Paul H. ...* 5-21-42
 OFFICE OF COUNTY ENGINEER
 REC'D 5-21-42

APPROVED *Alfred ...*
 COUNTY ENGINEER

APPROVED *Carl ...*
 CHIEF ENGINEER COUNTY
 SANITATION DISTRICT NO. 8



S.C. No. 168



P.C. 188

AS SHOWN ON THE PLAN
 SCALE 1" = 40'
 DATE 11/10/10
 5471

EXTRA STRENGTH PIPE
 18" DIA. 10' SPAN
 15' DIA. 10' SPAN
 12" DIA. 10' SPAN

Sanitary Sewer Easement
 18" DIA. 10' SPAN
 15" DIA. 10' SPAN
 12" DIA. 10' SPAN

TR. NO. 11768

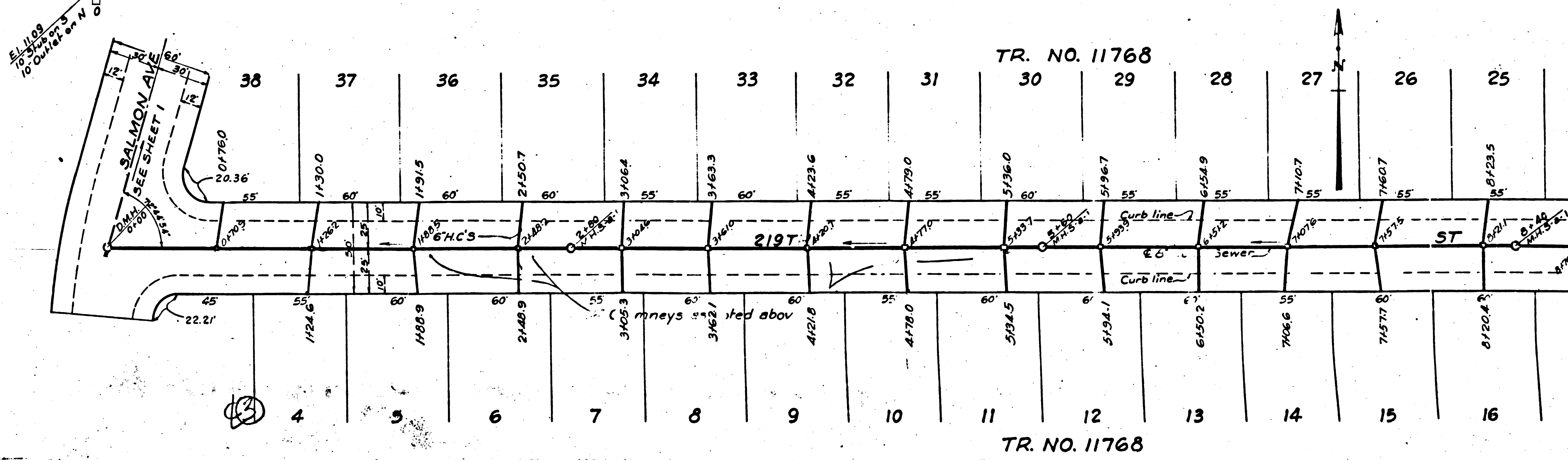
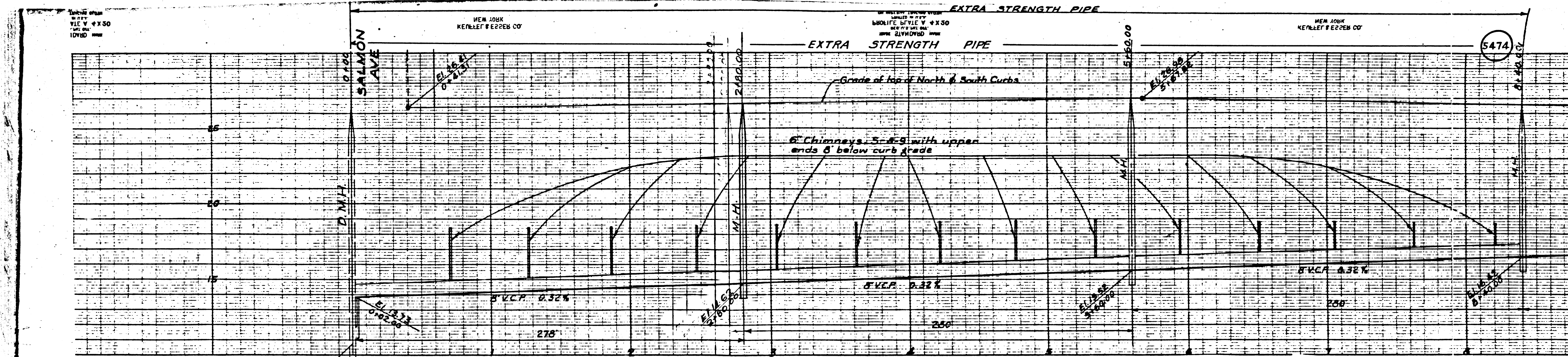
TR. NO. 11768

57 TRACT

NO. 21

11768 20

SEE SHEET 2



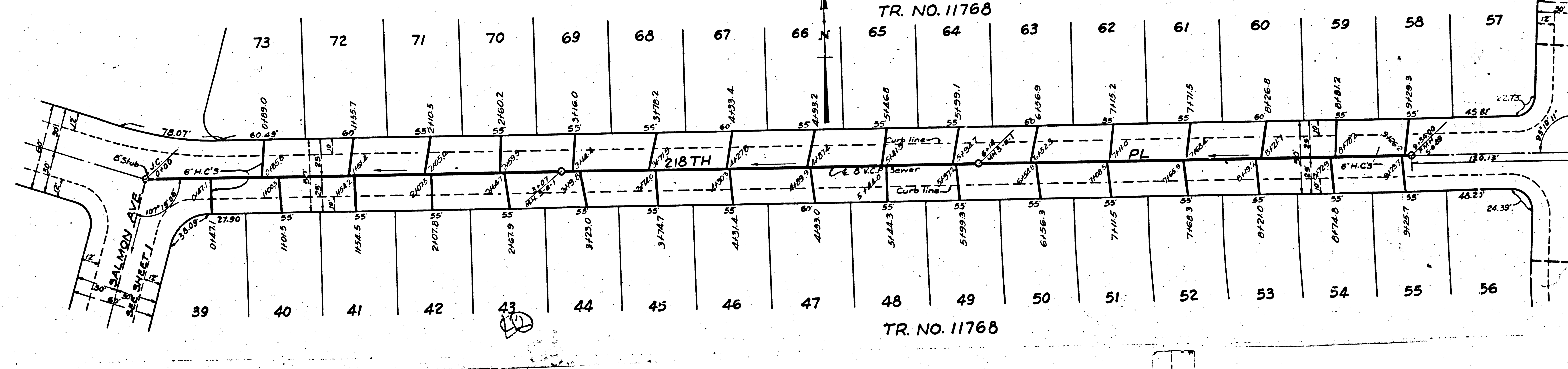
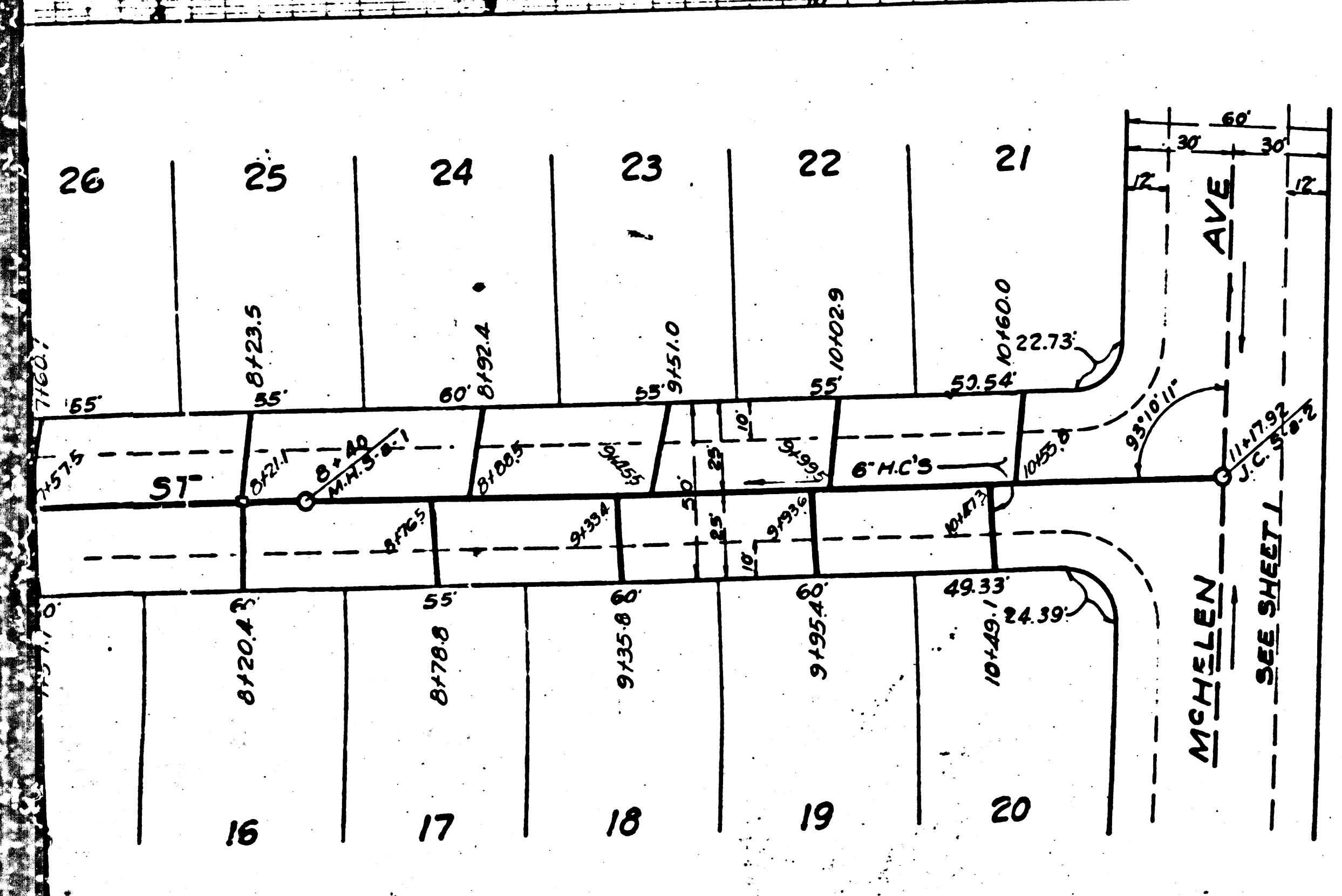
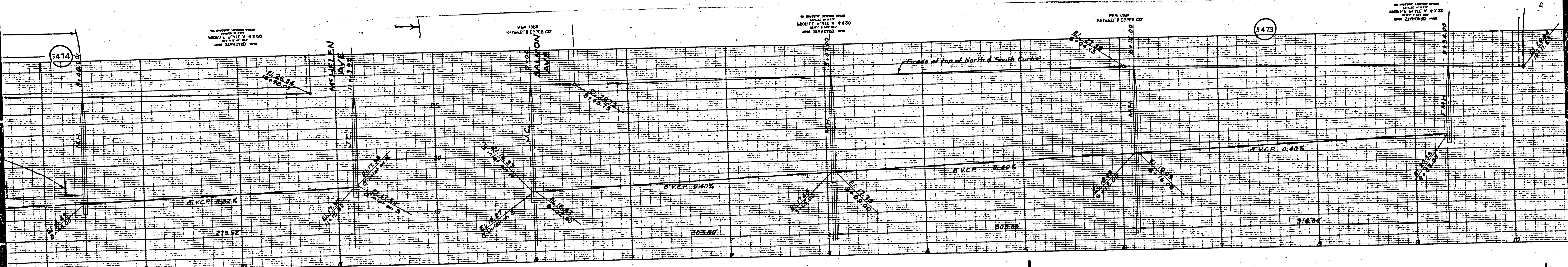
P.C. 188

NEW YORK KEPLER & EPPER CO. EXTRA STRENGTH PIPE

5474

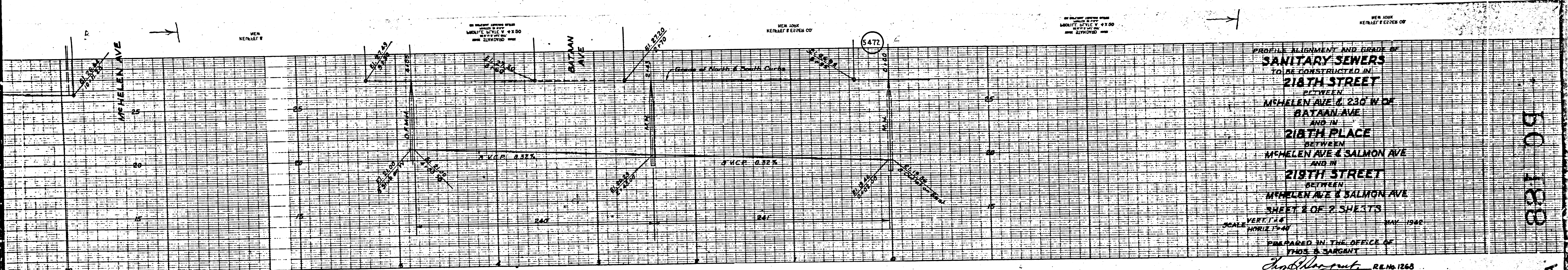
TR. NO. 11768

TR. NO. 11768



M

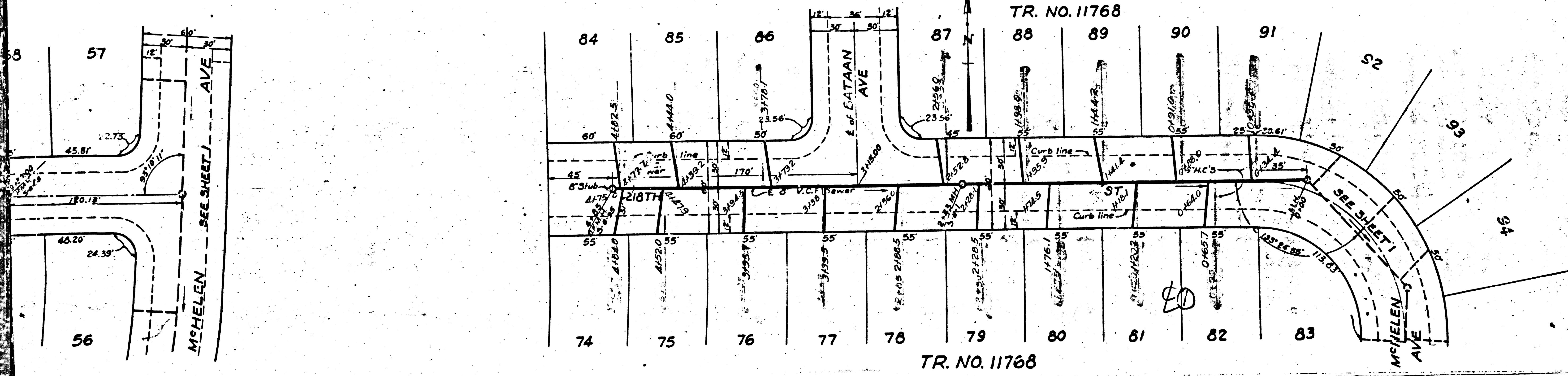
M6



PROFILE ALIGNMENT AND GRADE OF
SANITARY SEWERS
 TO BE CONSTRUCTED IN
218TH STREET
 BETWEEN
 McHELEN AVE & 230' W OF
 BATAAN AVE
 AND IN
218TH PLACE
 BETWEEN
 McHELEN AVE & SALMON AVE
 AND IN
219TH STREET
 BETWEEN
 McHELEN AVE & SALMON AVE
 SHEET 2 OF 2 SHEETS

SCALE VERT. 1" = 4'
 HORIZ. 1" = 40'

PREPARED IN THE OFFICE OF
 THOS. S. BURGENT
 JUN 2 1942



For Construction Notes See Sheet 1

COUNTY OF LOS ANGELES, CALIFORNIA

CHECKED BY *Paul E. ...* JUN 2 1942
 OFFICE OF COUNTY ENGINEER
 RES. C.E. 4000

APPROVED *Alfred Jones*
 COUNTY ENGINEER

APPROVED *Carl ...*
 CHIEF ENGINEER COUNTY
 SANITATION DISTRICT NO. 6

SEAL: COUNTY OF LOS ANGELES, CALIFORNIA
 SANITARY DIVISION
 JUN 2 1942

B.C. 188
 B.C. No. 188