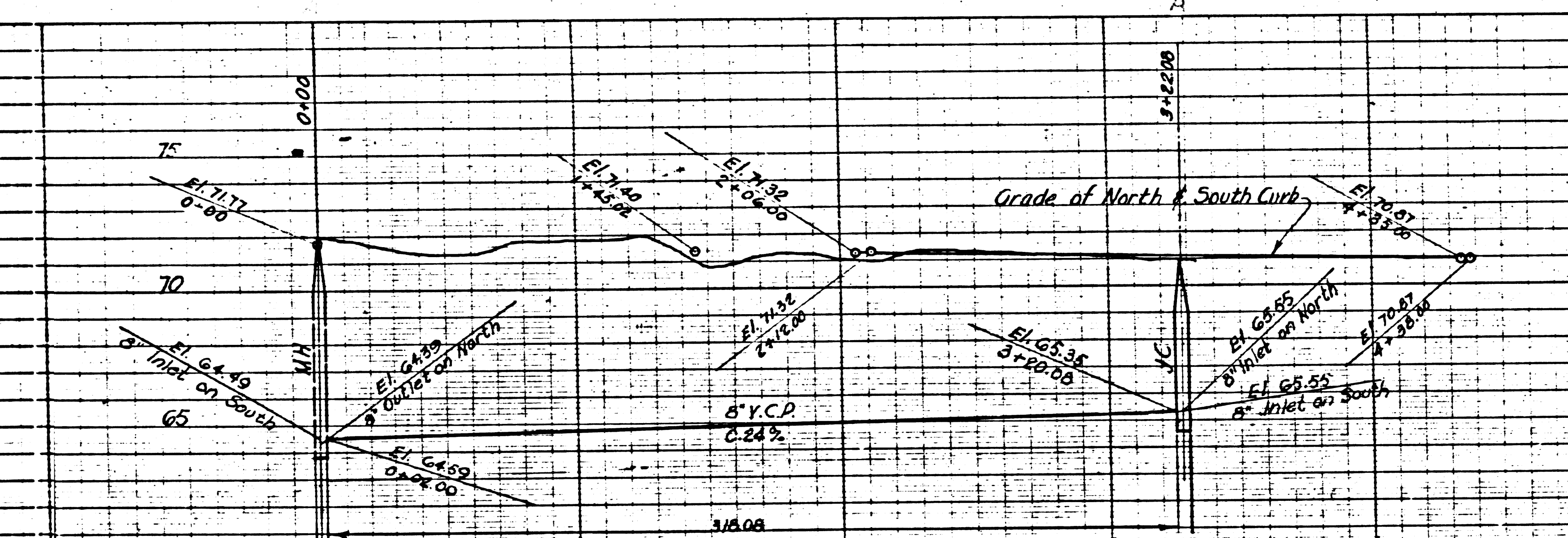
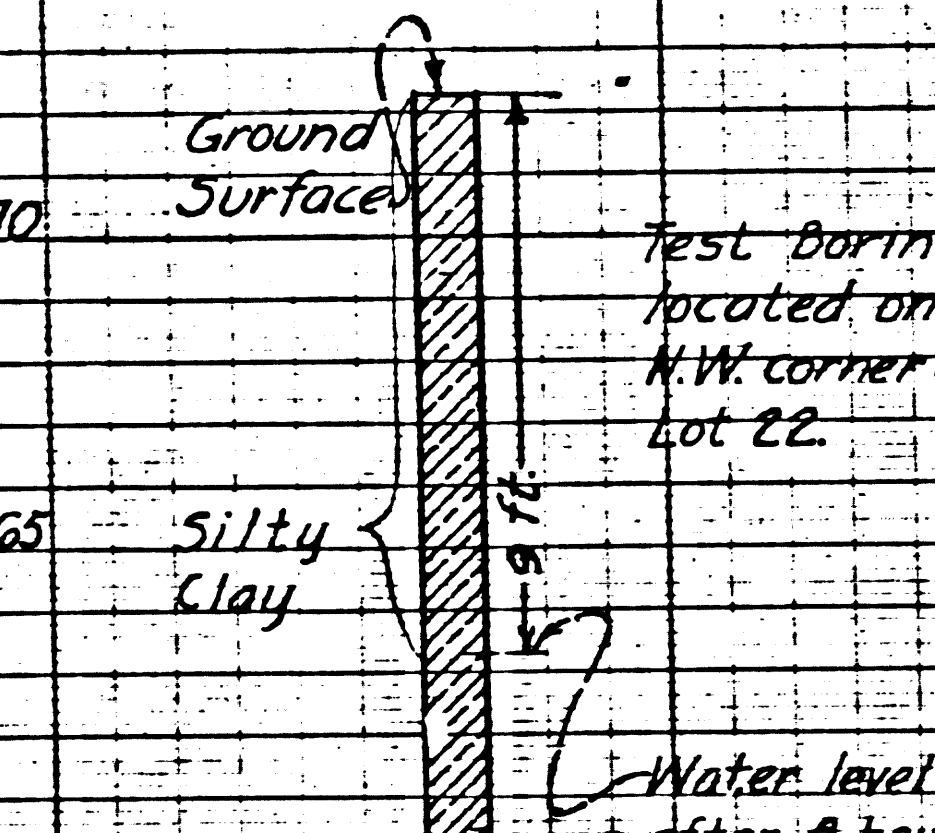


5508

BM- Lead and Tack - Elev. 73.90
E. curb of Atlantic Avenue and
N. of Rosencrans Avenue.

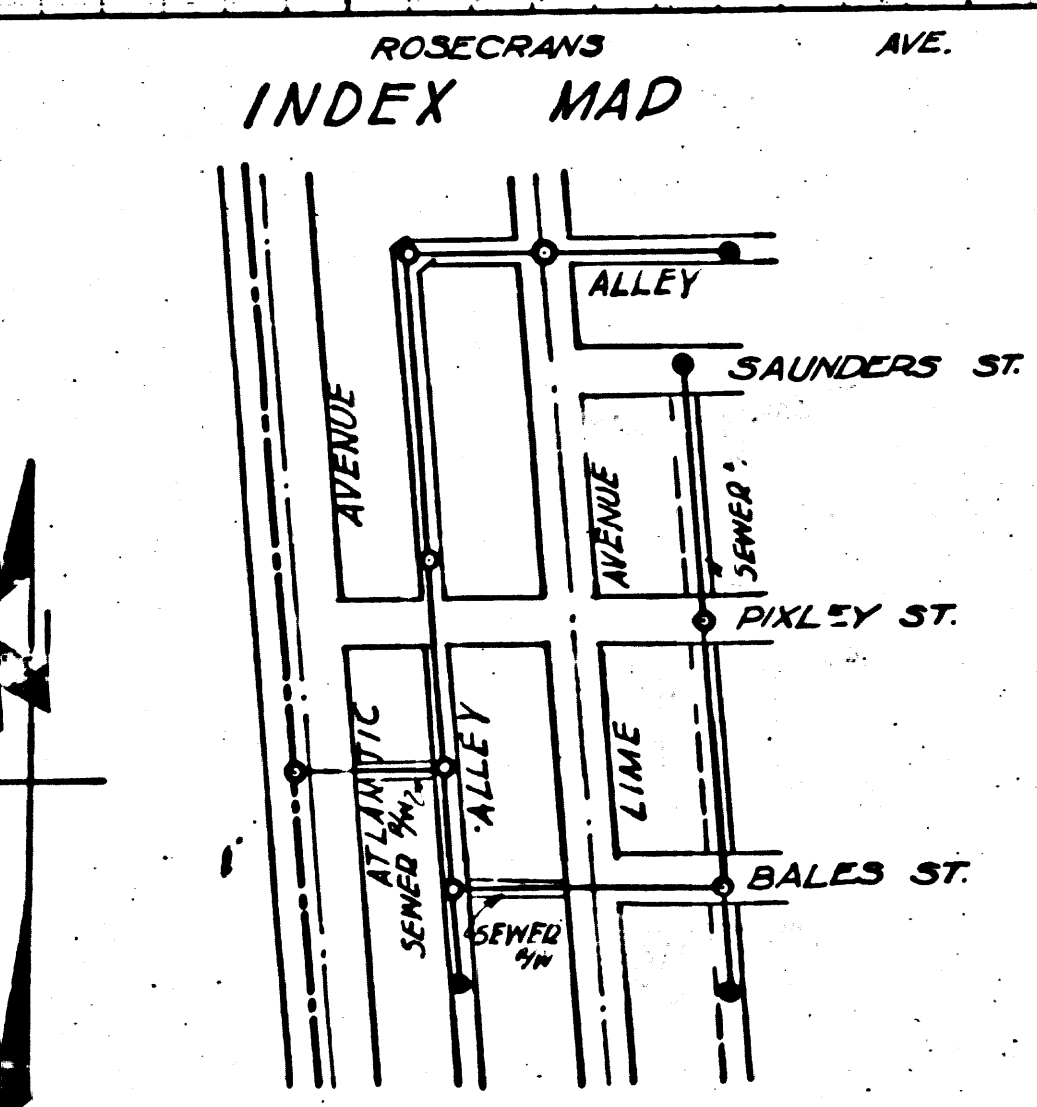
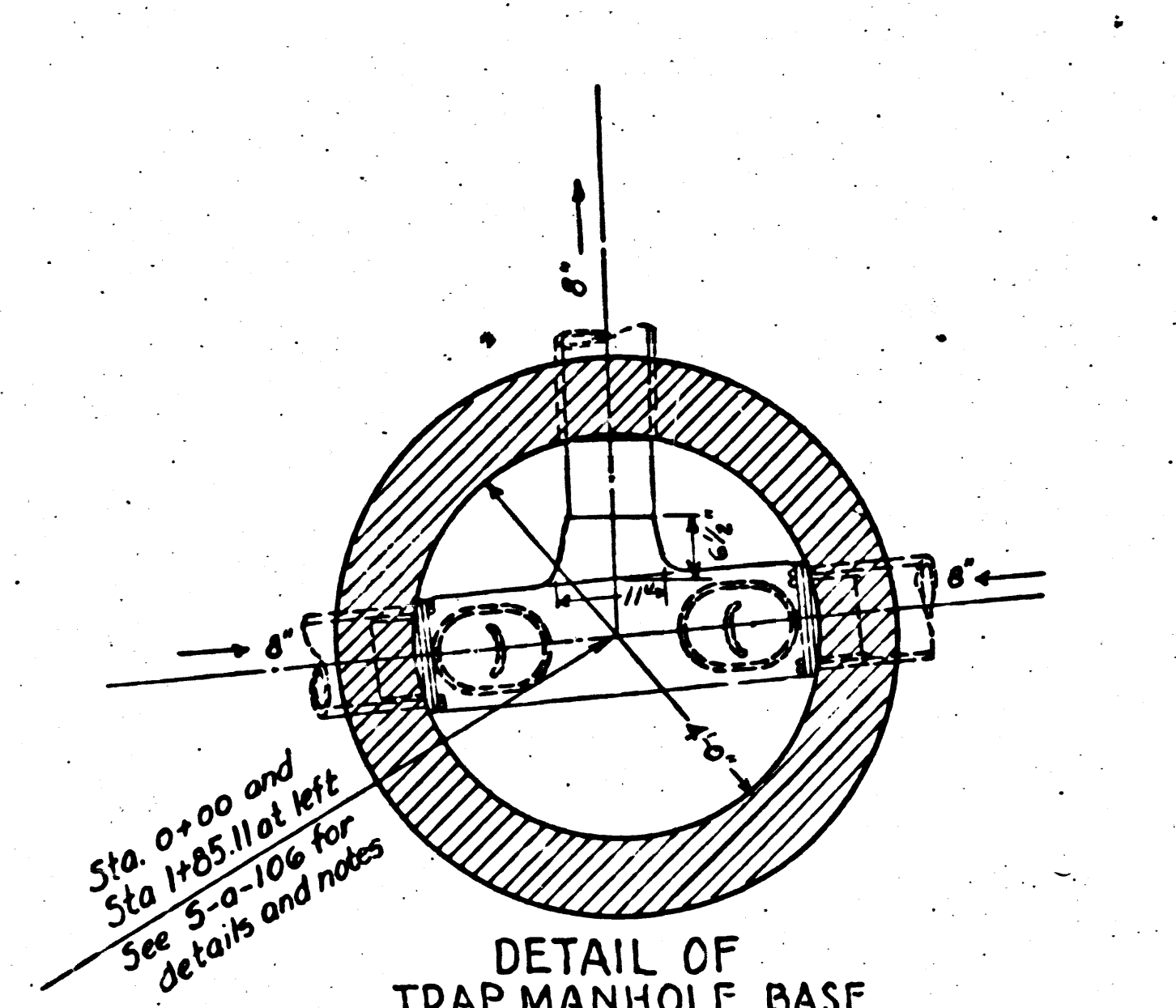
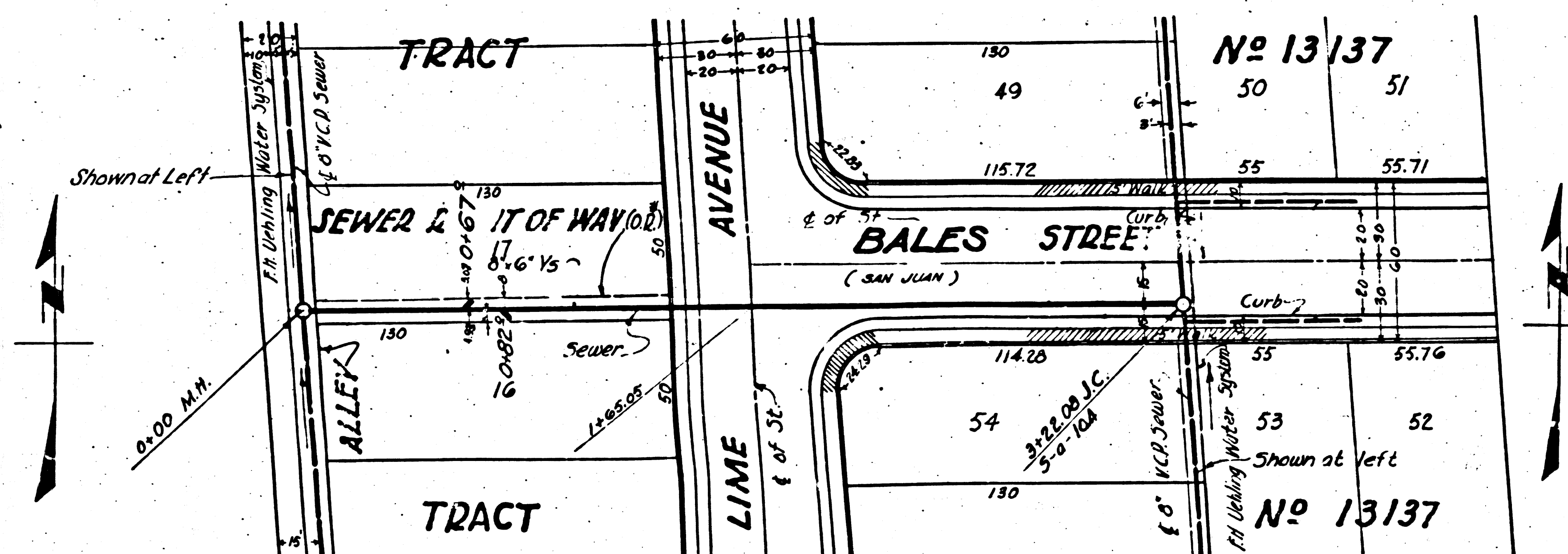


- (1) USE SPECIAL WOOD MANHOLE COVERS AND CONCRETE FRAME 3'-6" III
- (2) USE STANDARD STRENGTH PIPE.
- (3) USE CEMENT MORTAR FOR ALL VITRIFIED CLAY PIPE JOINTS.
- (4) RESURFACE ALL TRENCH WITHIN PAVED AREA TO MEET LOS ANGELES COUNTY ROAD DEPT. OR STATE-HIGHWAY REQUIREMENTS.
- (5) CONSTRUCT ROUSE CONNECTIONS WITH INVERT AT PROPERTY LINE 1 FEET BELOW CURB GRADE OR GRADE OF 4' OR ALLEY.
- (6) ENCASE FOUR FEET OF SEWER AT POINTS OF INTERFERENCE WITH POLES AS PER 5-a-6.



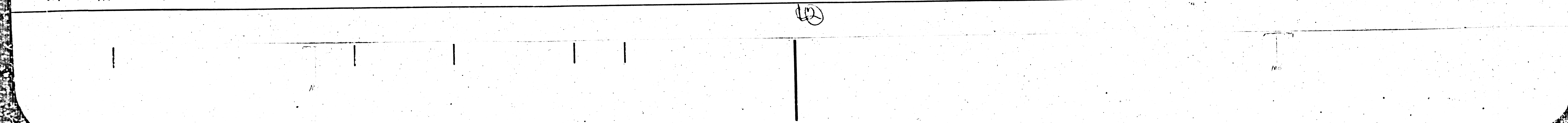
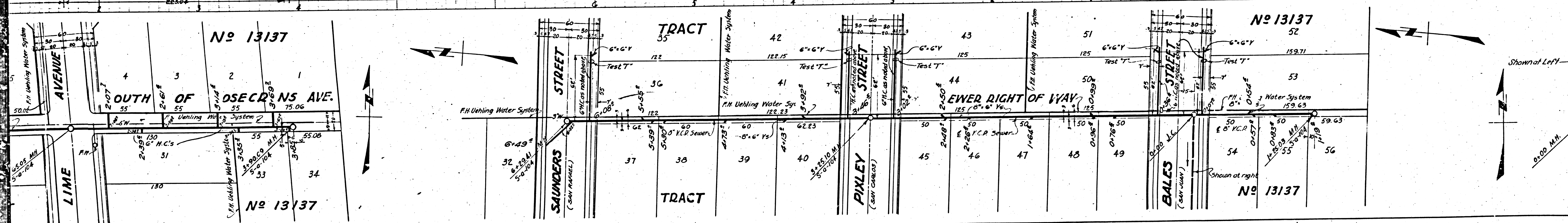
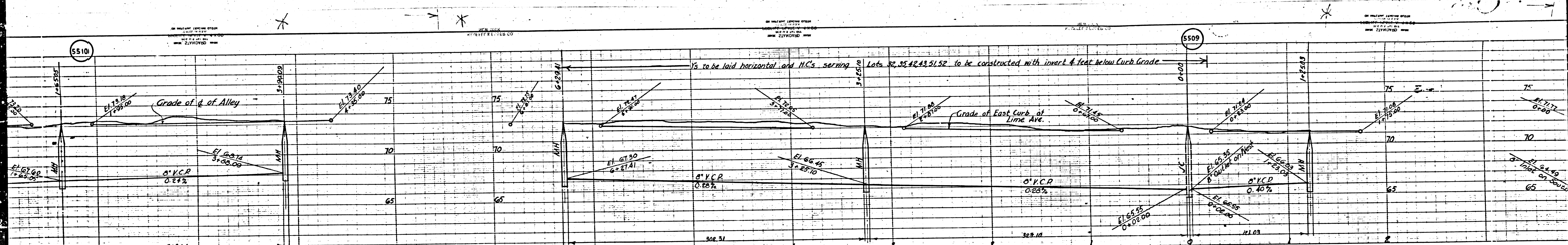
PROFILE, ALIGNMENT AND GRADE OF
SANITARY SEWERS
TO BE CONSTRUCTED IN
SAN JUAN STREET
1ST ALLEY SOUTH OF ROSECRANS AVE.
1ST ALLEY EAST OF ATLANTIC AVE.
SANITARY SEWER RIGHTS OF WAY
IN TRACT NO. 13137
PRIVATE CONTRACT NO. 190
W.S. 32
SHEET 1
MAY, 1942
PREPARED IN THE OFFICES OF

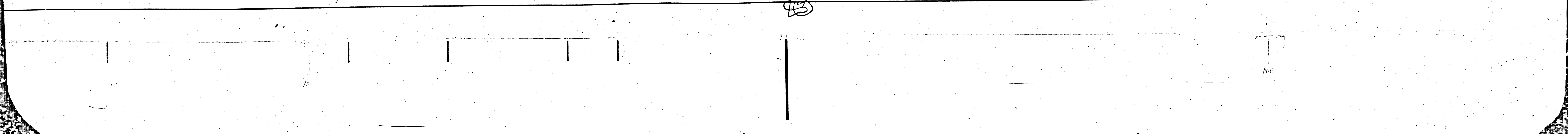
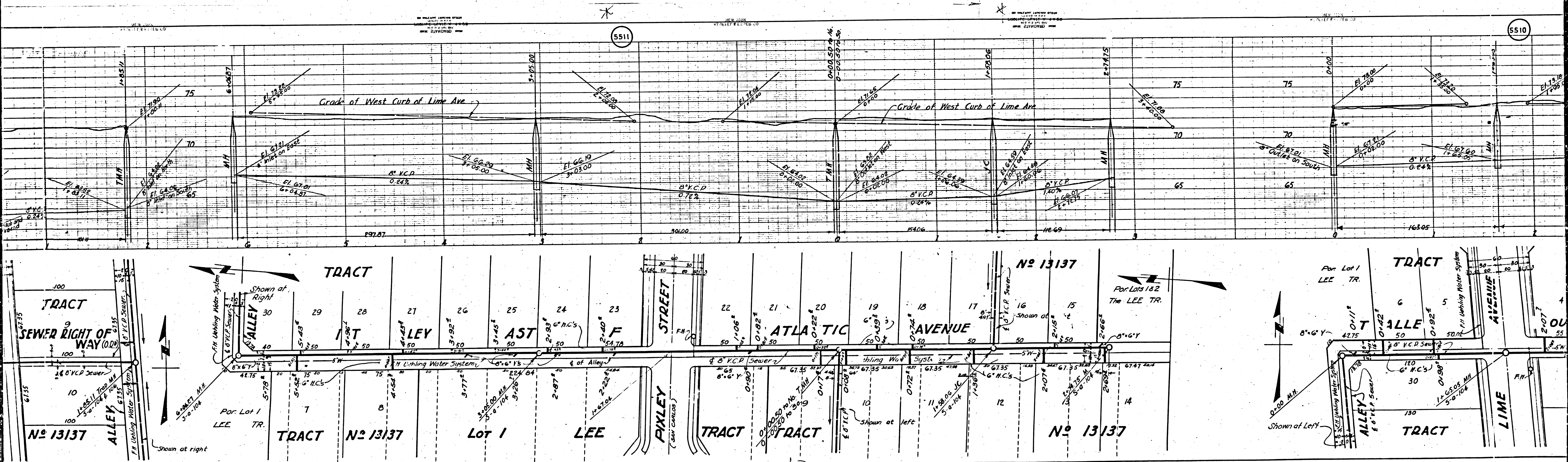
J. J. REES ENGINEERING CO.
MAY 31 1942
BY: *J. J. Rees*
REG. C. E. NO. 1100
FOR LEGEND
SEE PLAN NO. 5-a-64
NOTE:
GRADES TO WHICH THIS IMPROVEMENT IS TO BE CONSTRUCTED ARE SHOWN ON PLANS AND PROFILE. GRADE POINTS FOR TOP OF CURB, CENTER LINE OF STREET OR CENTER LINE OF ALLEY ARE SHOWN BY CIRCLES ON PROFILES. AT ALL POINTS BETWEEN DESIGNATED POINTS, THE GRADE SHALL BE ESTABLISHED SO AS TO CONFORM TO A STRAIGHT LINE DRAWN BETWEEN SAID DESIGNATED POINTS. ELEVATIONS ARE IN FEET ABOVE U. S. G. S. DATUM OF MEAN SEA LEVEL.
THIS DRAWING AND THE DATA HEREON ARE HEREBY MADE A PART OF THE SPECIFICATIONS. WORK SHALL BE CONSTRUCTED ACCORDING TO SPECIFICATIONS ON FILE IN THE OFFICE OF THE COUNTY ENGINEER AND SHALL BE PROSECUTED ONLY IN THE PRESENCE OF THE COUNTY ENGINEER. BEFORE WORK CAN BE STARTED THE CONTRACTOR MUST OBTAIN A PERMIT TO EXCAVATE IN COUNTY STREETS FROM THE L. A. COUNTY ROAD DEPT. 1104 HALL OF RECORDS, AND MAKE A DEPOSIT WITH THE COUNTY ENGINEER 100 UNION LEAGUE BUILDING, SUFFICIENT TO COVER THE COST OF CONSTRUCTION INSPECTION AND RECORD PLANS.
A PERMIT MUST BE OBTAINED FROM THE STATE OF CALIFORNIA DIVISION OF HIGHWAYS, 600 STATE BUILDING AFTER MAKING THE DEPOSIT WITH THE COUNTY ENGINEER.
COUNTY OF LOS ANGELES, CALIFORNIA.
APPROVED *J. J. Rees*
COUNTY ENGINEER
APPROVED *Paul E. Russell*
CHIEF ENGINEER OF COUNTY SANITATION DISTRICT NO. 1
APPROVED AS REVISED OCT. 1942

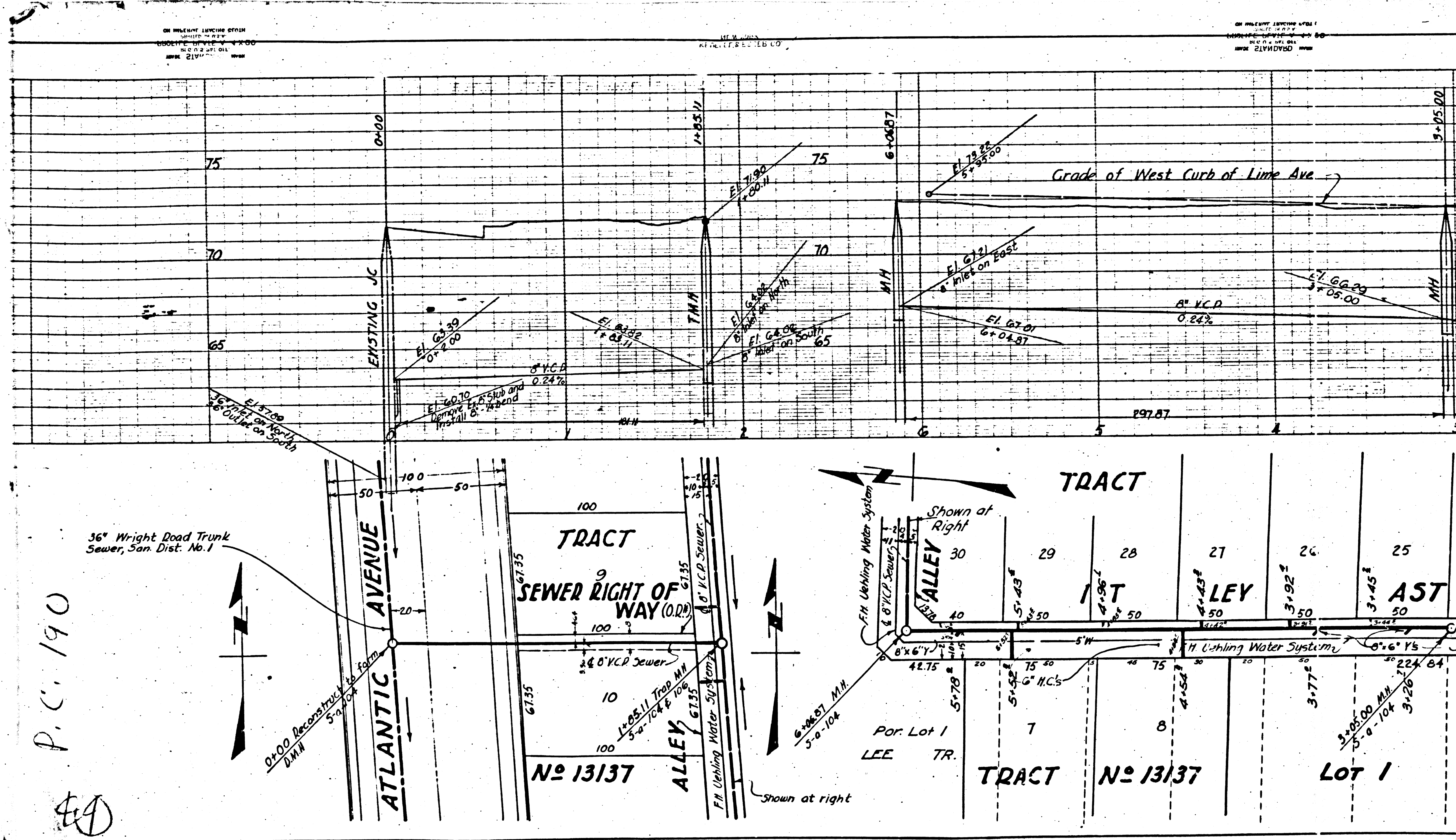


REVISED - OCTOBER, 1942
CHECKED BY *William S. ...* 1942
OFFICE OF COUNTY ENGINEER REG. C. E. NO. 5879
CHECKED BY *Paul E. Russell* 1942
OFFICE OF COUNTY ENGINEER REG. C. E. NO. 4868

501 160







P.C. 190

44