

PROFILE ALIGNMENT AND GRADE OF
SANITARY SEWER
 TO BE CONSTRUCTED IN
CARSON ST. FROM HARBOR VIEW AVE. TO EVONDA AVE.
ONE SHEET
 SCALE: VERT. 1" = 4'
 HORIZ. 1" = 40'
 JULY 1942
 PREPARED IN THE OFFICE OF
 TOWN & COUNTRY ENGINEERS
 W.S. 30
 PRIVATE CONTRACT NO. 192

FOR LEGEND
 SEE PLAN NO. S-3-64

NOTE: GRADES TO WHICH THIS IMPROVEMENT IS TO BE CONSTRUCTED ARE SHOWN ON PLANS AND PROFILE GRADE POINTS FOR TOP OF CURB, CENTER LINE OF STREET OR CENTER LINE OF ALLEY ARE SHOWN BY CIRCLES ON PROFILES. AT ALL POINTS BETWEEN DESIGNATED POINTS THE GRADE SHALL BE ESTABLISHED SO AS TO CONFORM TO A STRAIGHT LINE DRAWN BETWEEN SAID DESIGNATED POINTS. ELEVATIONS ARE IN FEET ABOVE U.S. S. DATUM OR MEAN SEA LEVEL. THIS DRAWING AND THE DATA HEREON ARE HEREBY MADE A PART OF THE SPECIFICATIONS. THE WORK SHALL BE CONSTRUCTED ACCORDING TO SPECIFICATIONS ON FILE IN THE OFFICE OF THE COUNTY ENGINEER AND SHALL BE PROSECUTED ONLY IN THE PRESENCE OF THE COUNTY ENGINEER. A PERMIT TO EXCAVATE IN THE STREET MUST BE SECURED FROM THE COUNTY ROAD DEPT. BEFORE WORK IS STARTED. BEFORE WORK IS STARTED, CONTRACTOR MUST MAKE ARRANGEMENTS WITH THE COUNTY ENGINEER TO HAVE AN INSPECTOR ASSIGNED TO THE WORK AND MUST MAKE A DEPOSIT SUFFICIENT TO COVER THE COST OF CONSTRUCTION INSPECTION AND RECORD PLANS.

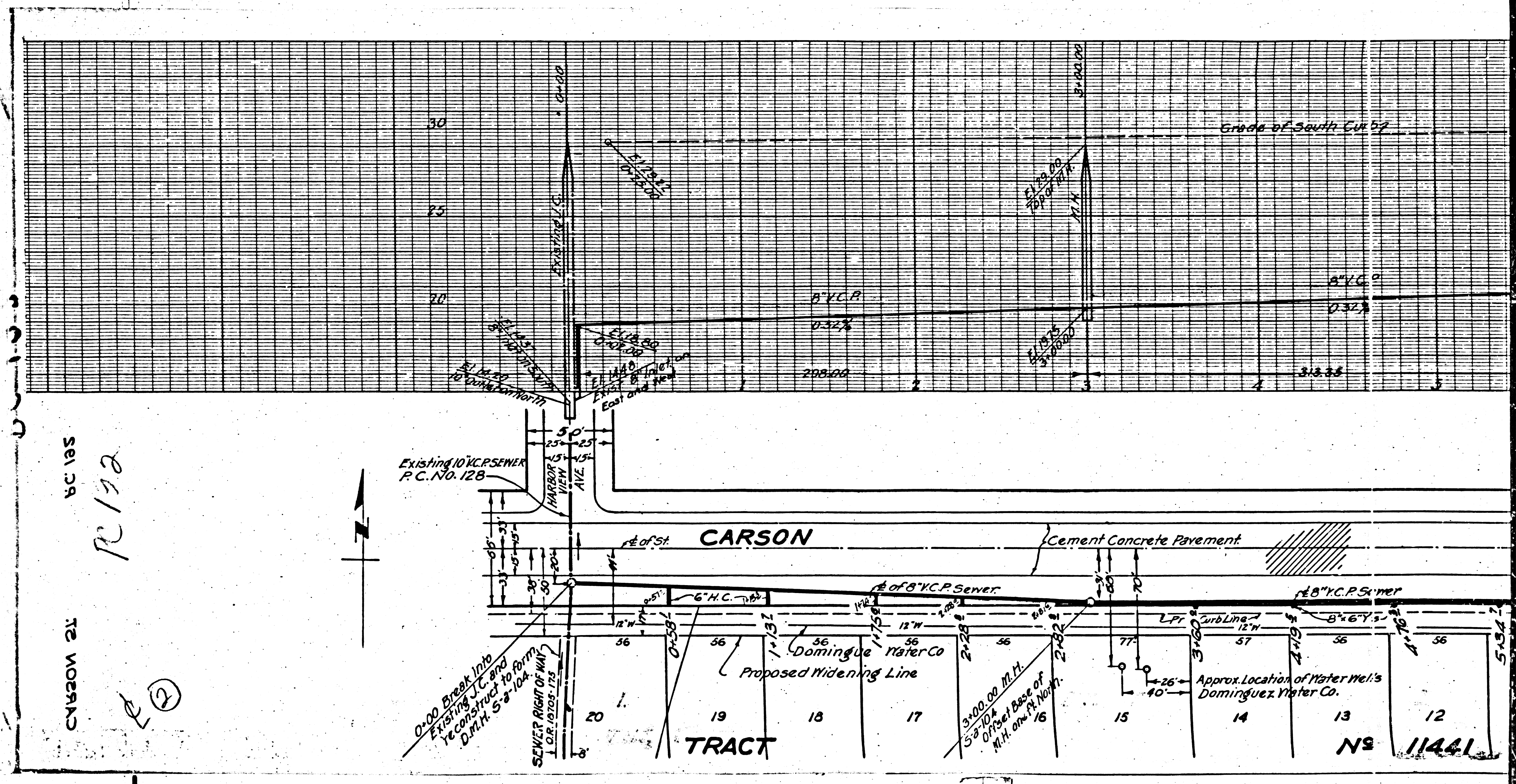
COUNTY OF LOS ANGELES, CALIFORNIA.

APPROVED: *Alfred Jones*
 COUNTY ENGINEER

APPROVED: *Carroll Jones*
 CHIEF ENGINEER OF COUNTY SANITATION DISTRICT NO. 6

CHECKED BY: *Walter H. ...* 1942
 OFFICE OF COUNTY ENGINEER

BC 105
 11441
 11441



511 38
 R 172
 12 MORRIS
 12

NS 11441