

PLAN "B"

PROFILE ALIGNMENT AND GRADE OF
SANITARY SEWERS
 TO BE CONSTRUCTED IN BELLFLOWER
 TO SERVE
EUCALYPTUS AVENUE SCHOOL
RYON AVENUE SCHOOL

DELIVER ALL SALVAGED METAL APPURTENANCES TO L.A. COUNTY SEWER MAINTENANCE YARD 891 EAST 33RD. STREET, LOS ANGELES
 USE STANDARD STRENGTH PIPE
 USE CEMENT MORTAR FOR ALL V. C. P. JOINTS
 RESURFACE TRENCH WITHIN PAVED AREA WITH PREMIX ROCK AND OR 3" IN THICKNESS EXCEPT AS NOTED
 ENCASE FOUR FEET OF SEWER AT POINTS OF INTERFERENCE WITH POLES AS PER S-a-4
 USE SPECIAL WOOD-MANHOLE COVER & CONCRETE FRAME AS PER S-a-111
 WIRE AND TAGS, AS SPECIFIED IN SEC. 61 OF THE SPECIFICATIONS SHALL BE OMITTED

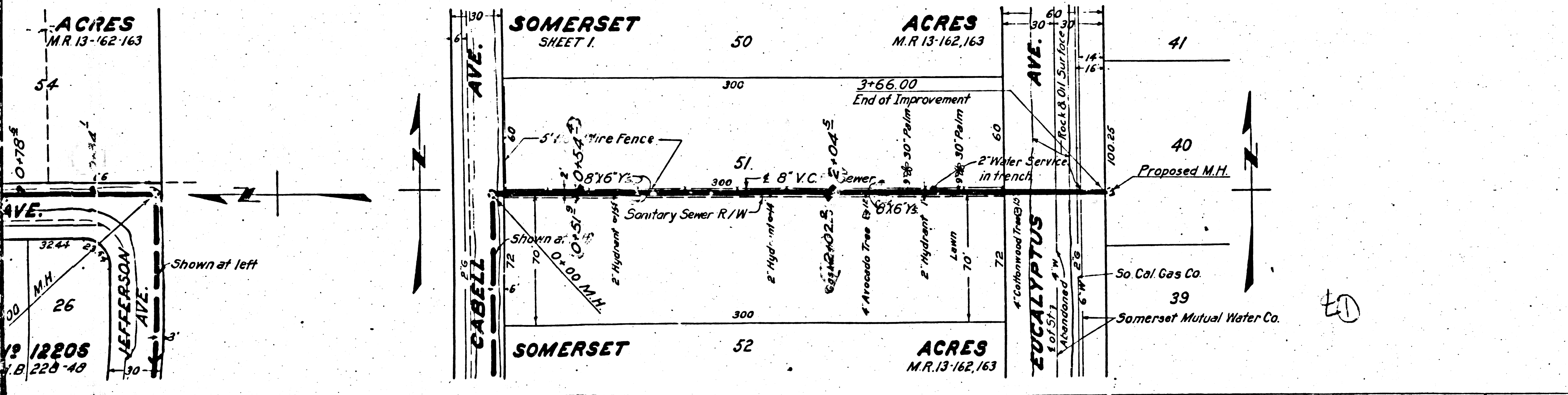
OCTOBER 1942
 COUNTY OF LOS ANGELES, CALIFORNIA

ALFRED JONES COUNTY ENGINEER
 RECOMMENDED *Chas. H. ...* CHIEF DEPUTY
 APPROVED *Alfred Jones* COUNTY ENGINEER
 APPROVED AS TO FORM J. H. O'CONNOR COUNTY COUNSEL
 BY *Arthur ...* DEPUTY

FOR LEGEND
 SEE PLAN NO. S-264

NOTE:
 GRADES TO WHICH THIS IMPROVEMENT IS TO BE CONSTRUCTED ARE SHOWN ON PLANS AND PROFILES. GRADE POINTS FOR TOP OF CURB, CENTER LINE OF STREET OR CENTER LINE OF ALLEY ARE SHOWN BY CIRCLES ON PROFILES. AT ALL POINTS BETWEEN DESIGNATED POINTS THE GRADE SHALL BE ESTABLISHED SO AS TO CONFORM TO A STRAIGHT LINE DRAWN BETWEEN SAID DESIGNATED POINTS.
 ELEVATIONS ARE IN FEET ABOVE U. S. C. S. DATUM OR MEAN SEA LEVEL.
 UNIT PRICES FOR ADDITIONAL WORK WHICH MAY BE REQUIRED BUT WHICH CANNOT BE ASCERTAINED IN ADVANCE, SHALL BE SUBMITTED IN THE PROPOSAL.
 THIS DRAWING AND THE DATA HEREON ARE HEREBY MADE A PART OF THE SPECIFICATIONS.

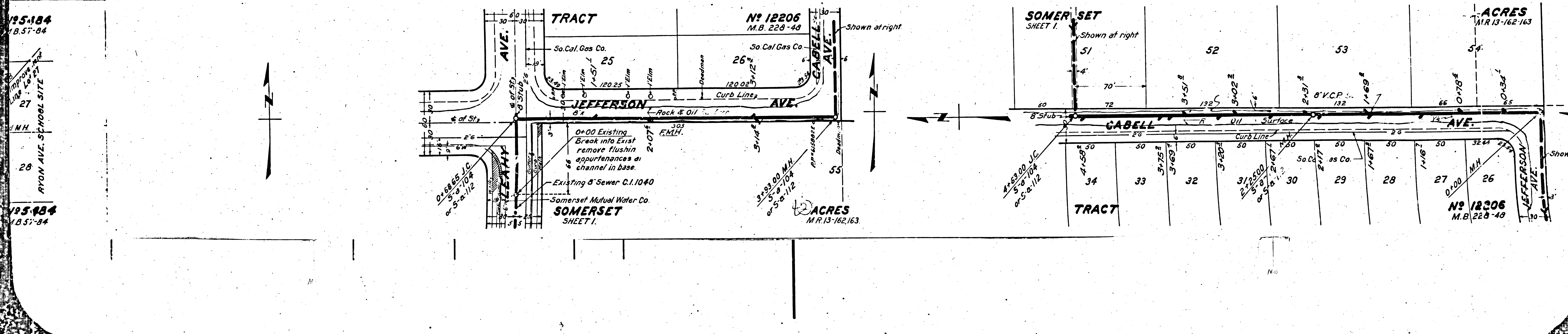
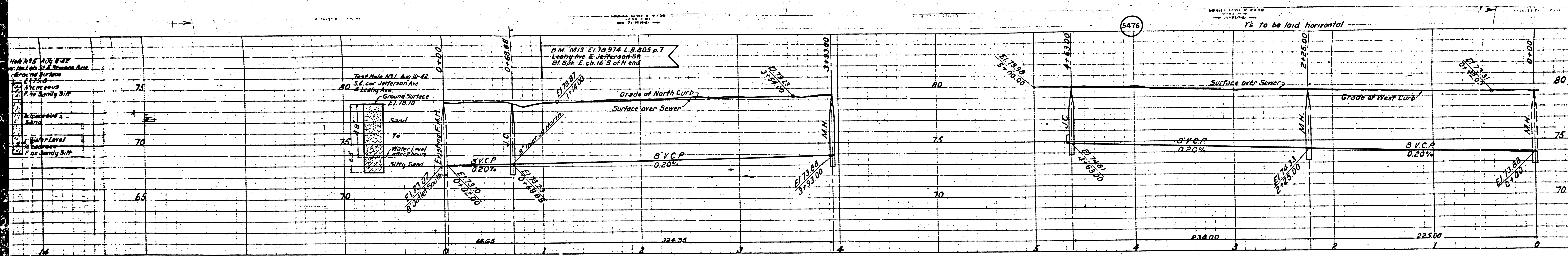
REFERENCES		
W. S. 39	DESIGNED	<i>Mincaid</i> Sept. 1942
A. B. 453	TRACED	<i>Mincaid</i> Sept. 1942
F. B. 353	CHECKED	<i>Smelser</i> Oct. 1942



EUCALYPTUS AVENUE SCHOOL
 RYON AVENUE SCHOOL

DU JON

10.25.42
 11.25.42



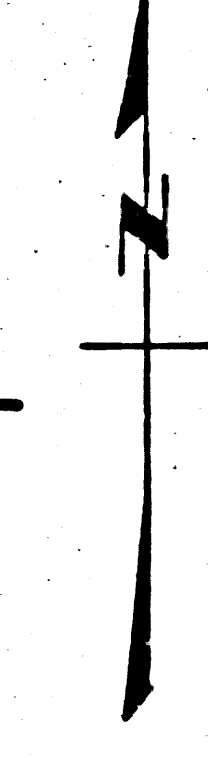
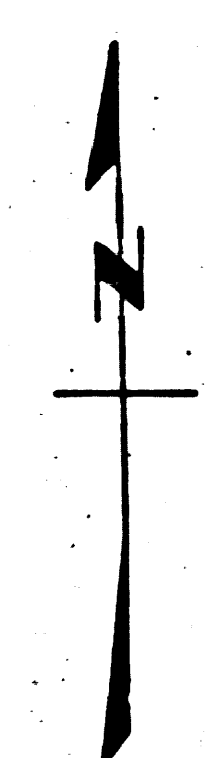
195-184
1857-84

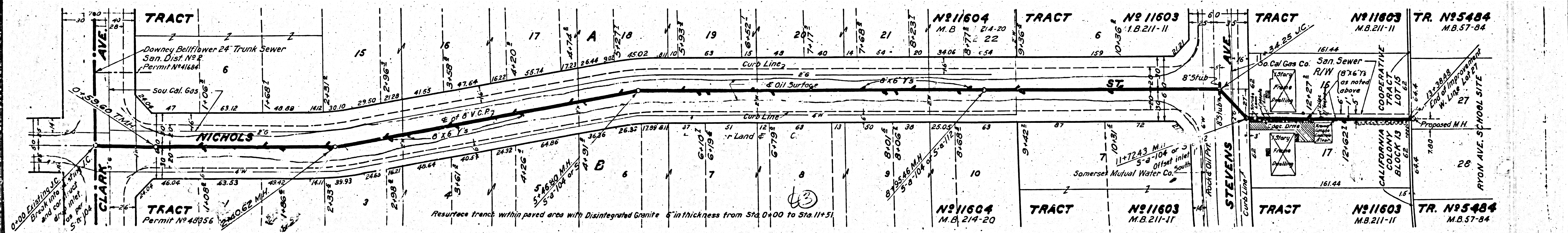
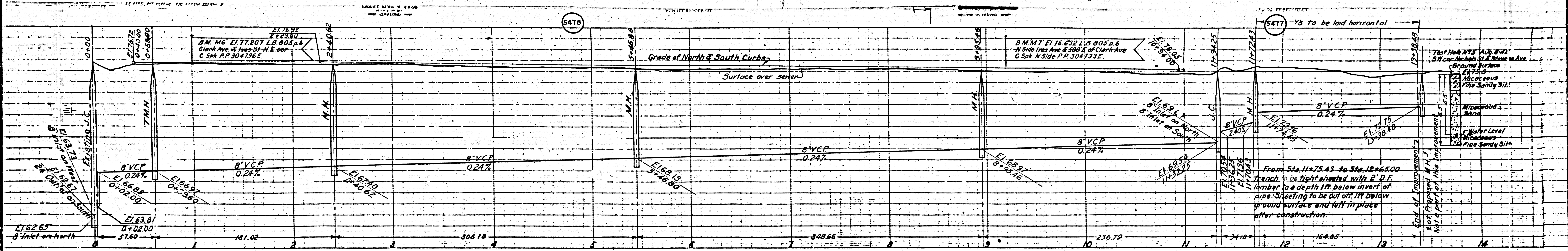
195-184
1857-84

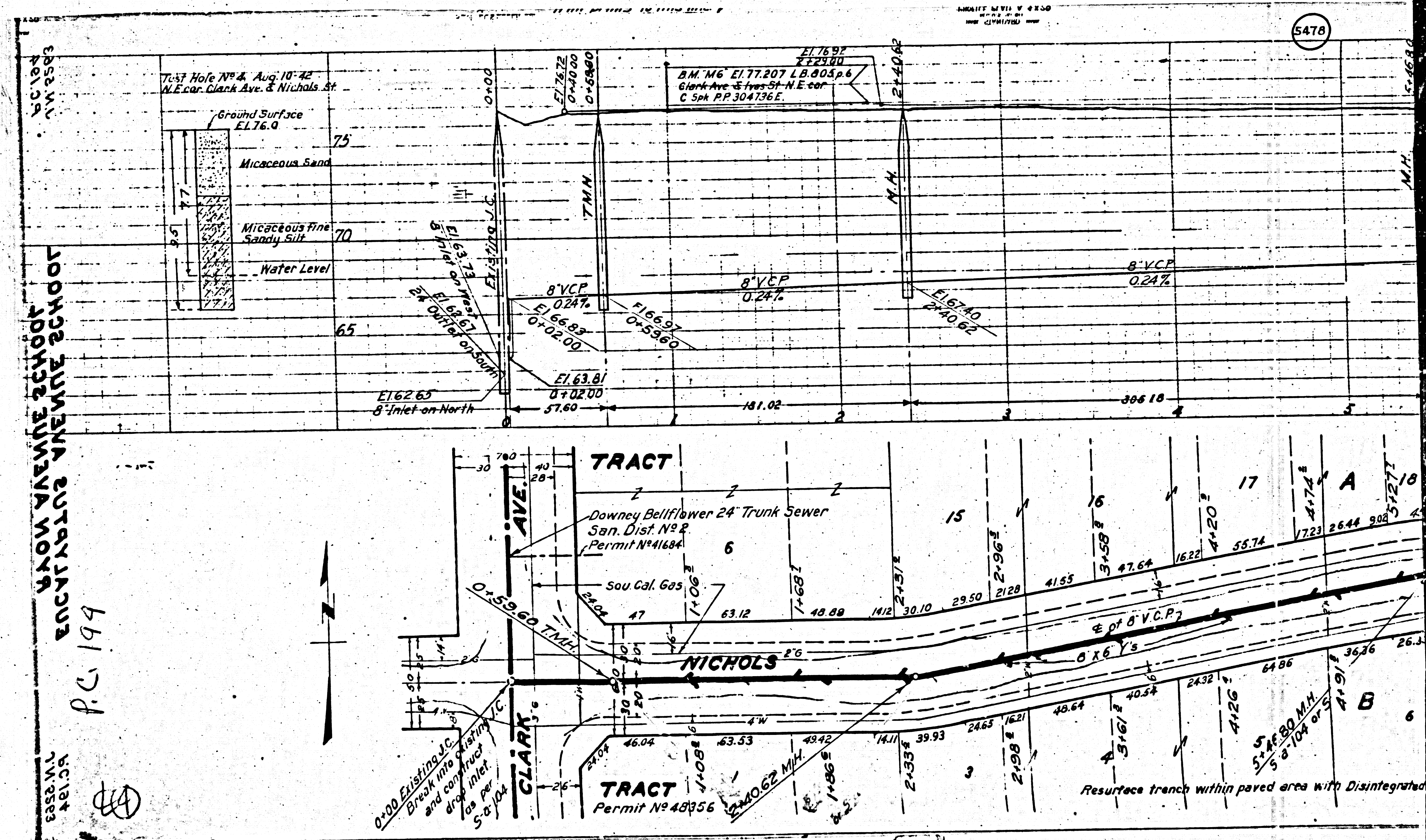
195-184
1857-84

5476

Ys to be laid horizontal







100' HIGH SCHOOL
 100' HIGH SCHOOL
 100' HIGH SCHOOL
 P.C. 199

(5478)

