

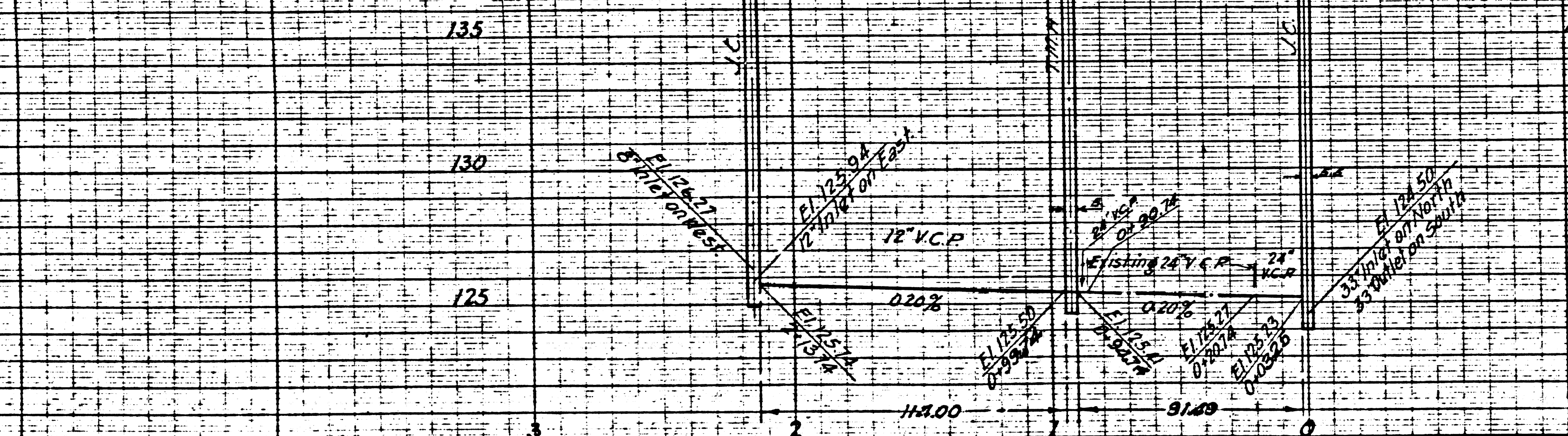
A.M. 7 E. 139,060 L.A. Co. 921 Deed 10,140
N.E. Cor. Washington Blvd. & Eastland Ave.
L.O.F. in 8' Curb, Ret.

6515

- 1 USE SPECIAL MANHOLE FRAMES AND COVERS (5-F-708) EXCEPT AS NOTED
- 2 USE STANDARD STRENGTH PIPE (EXCEPT AS NOTED)
- 3 USE CEMENT MORTAR FOR ALL PIPE JOINTS
- 4 RESURFACE ALL TRENCH WITHIN PAVED AREA TO MEET LOS ANGELES COUNTY ROAD DEPT. REQUIREMENTS.
- 5 CONSTRUCT HOUSE CONNECTIONS AS PER STANDARD SPECIFICATIONS.
- 6 ENCASE FOUR FEET OF SEWER AT POINTS OF INTERFERENCE WITH POLES AS PER 5-6-6

PROFILE ALIGNMENT AND GRADE OF
SANITARY SEWERS

TO BE CONSTRUCTED IN
EASTLAND AVE.
BETWEEN WASHINGTON BLVD. AND FIRST ALLEY NORTH OF WASHINGTON BLVD.
FIRST ALLEY NORTH OF WASHINGTON BLVD.
BETWEEN EASTLAND AVE. AND FIDELIA AVE.
SANITARY SEWER RIGHT-OF-WAY
IN TRACT NO. 9962, M.B. 137-18, 19
FIRST ALLEY EAST OF FIDELIA AVE.
FIRST ALLEY EAST OF BORIS AVE.
BETWEEN JILLSON ST. AND BARTMUS ST.
BARTMUS ST.
BETWEEN EASTERLY LINE OF TRACT NO. 9824, M.B. 165-32, 33 AND WESTERLY LINE OF TRACT NO. 9962, M.B. 137-18, 19
PRIVATE CONTRACT NO. 198
W.S. 36
ONE SHEET.



SCALE: VERT. 1"=4'
HORIZ. 1"=40'

AUGUST 1942

PREPARED IN THE OFFICE OF
GEORGE G. BLACKMER,
BY: *George G. Blackmer*
REG. C.E. NO. 1211

FOR LEGEND
SEE PLAN NO. 5-8-64

NOTE:
GRADES TO WHICH THIS IMPROVEMENT IS TO BE CONSTRUCTED ARE SHOWN ON PLANS AND PROFILE. GRADE POINTS FOR TOP OF CURB, CENTER LINE OF STREET OR CENTER LINE OF ALLEY ARE SHOWN BY CIRCLES ON PROFILES. AT ALL POINTS BETWEEN DESIGNATED POINTS THE GRADE SHALL BE ESTABLISHED SO AS TO CONFORM TO A STRAIGHT LINE DRAWN BETWEEN SAID DESIGNATED POINTS. ELEVATIONS ARE IN FEET ABOVE U.S.G.S. DATUM OR MEAN SEA LEVEL.
THIS DRAWING AND THE DATA HEREON ARE HEREBY MADE A PART OF THE SPECIFICATIONS. WORK SHALL BE CONSTRUCTED ACCORDING TO SPECIFICATIONS ON FILE IN THE OFFICE OF THE COUNTY ENGINEER AND SHALL BE PROSECUTED ONLY IN THE PRESENCE OF THE COUNTY ENGINEER. A PERMIT TO EXCAVATE IN THE STREET MUST BE SECURED FROM THE COUNTY ROAD DEPARTMENT BEFORE WORK IS STARTED.
BEFORE WORK IS STARTED, CONTRACTOR MUST MAKE ARRANGEMENTS WITH THE COUNTY ENGINEER TO HAVE AN INSPECTOR SIGNIFY TO THE WORK AND MUST MAKE A DEPOSIT SUFFICIENT TO COVER THE COST OF CONSTRUCTION INSPECTION AND RECORD PLANS.

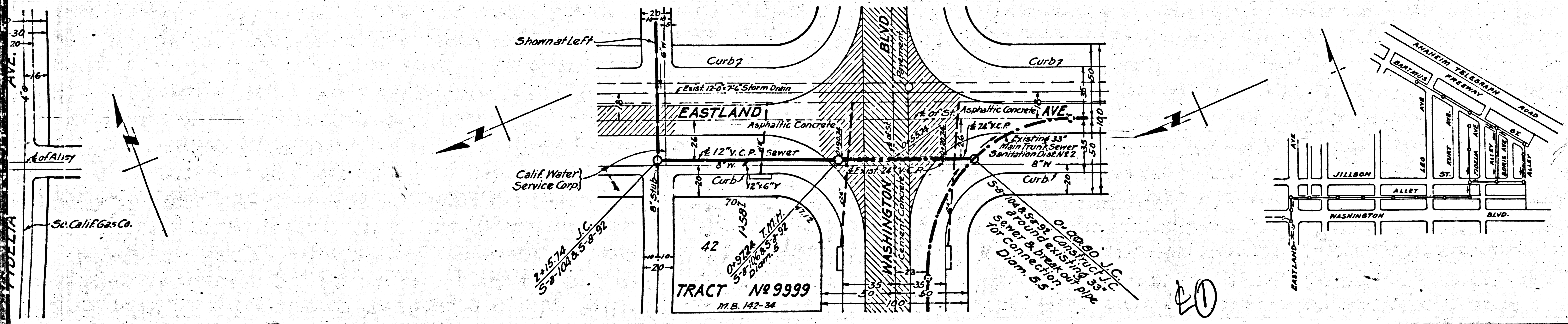
COUNTY OF LOS ANGELES, CALIFORNIA.

REC. L-27-1943

APPROVED *Alfred Janis*
COUNTY ENGINEER

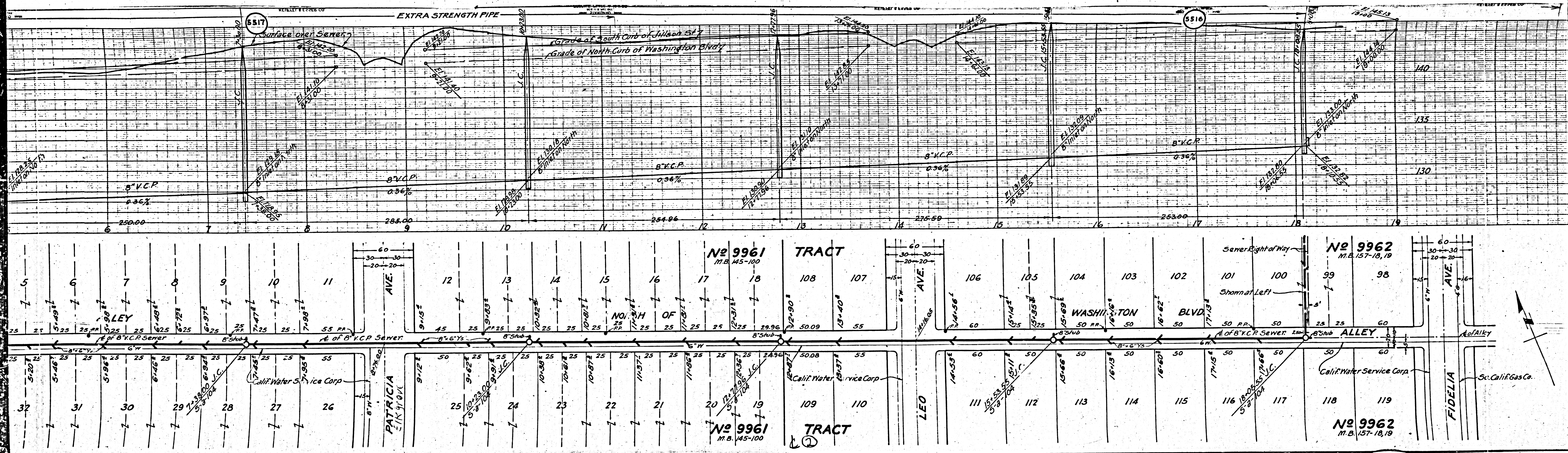
CHECKED BY *Valdem Toldman* 12-21-42
OFFICE OF COUNTY ENGINEER, REG. C.E. NO. 2527

APPROVED *Cliff Lamm*
CHIEF ENGINEER OF COUNTY SANITATION DISTRICT NO. 1



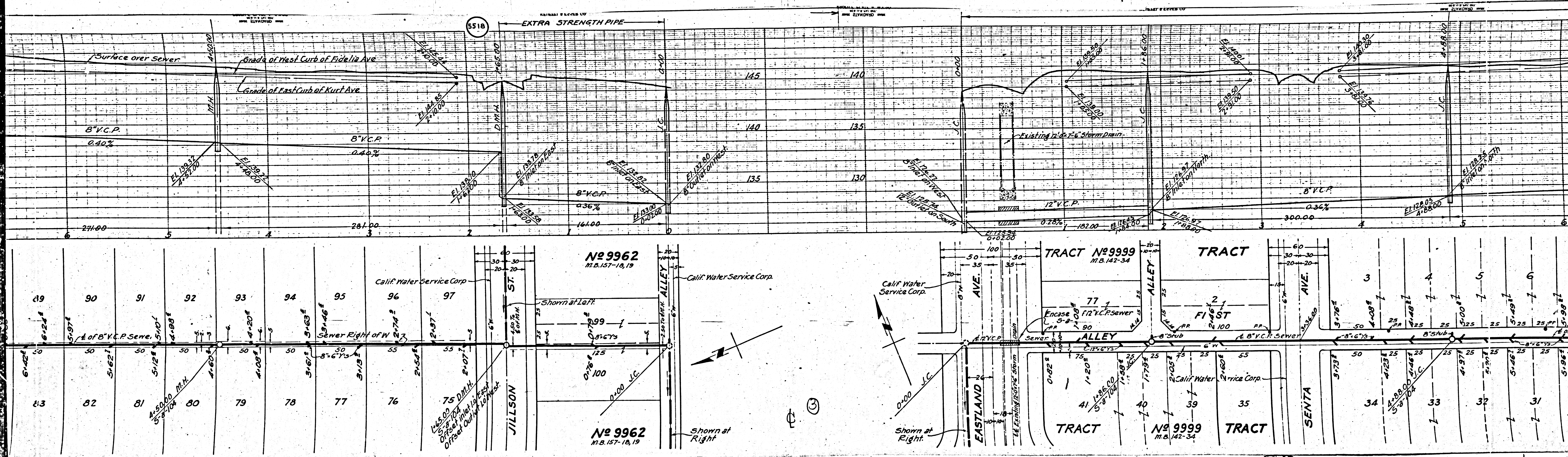
TRACT NO. 9999
M.B. 142-34

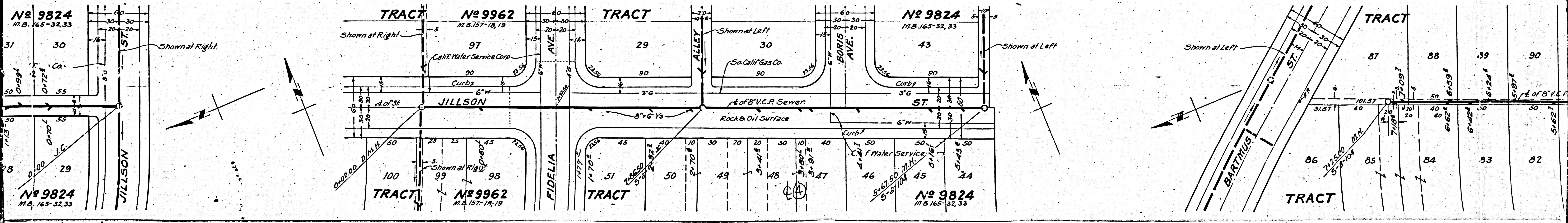
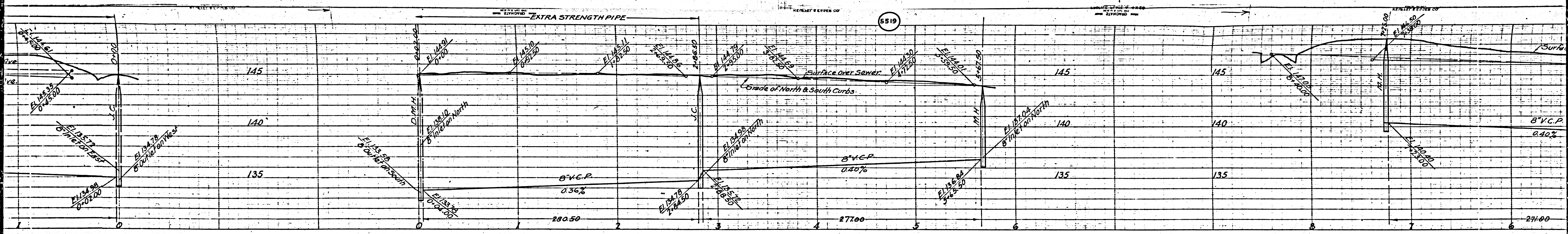
20



M5

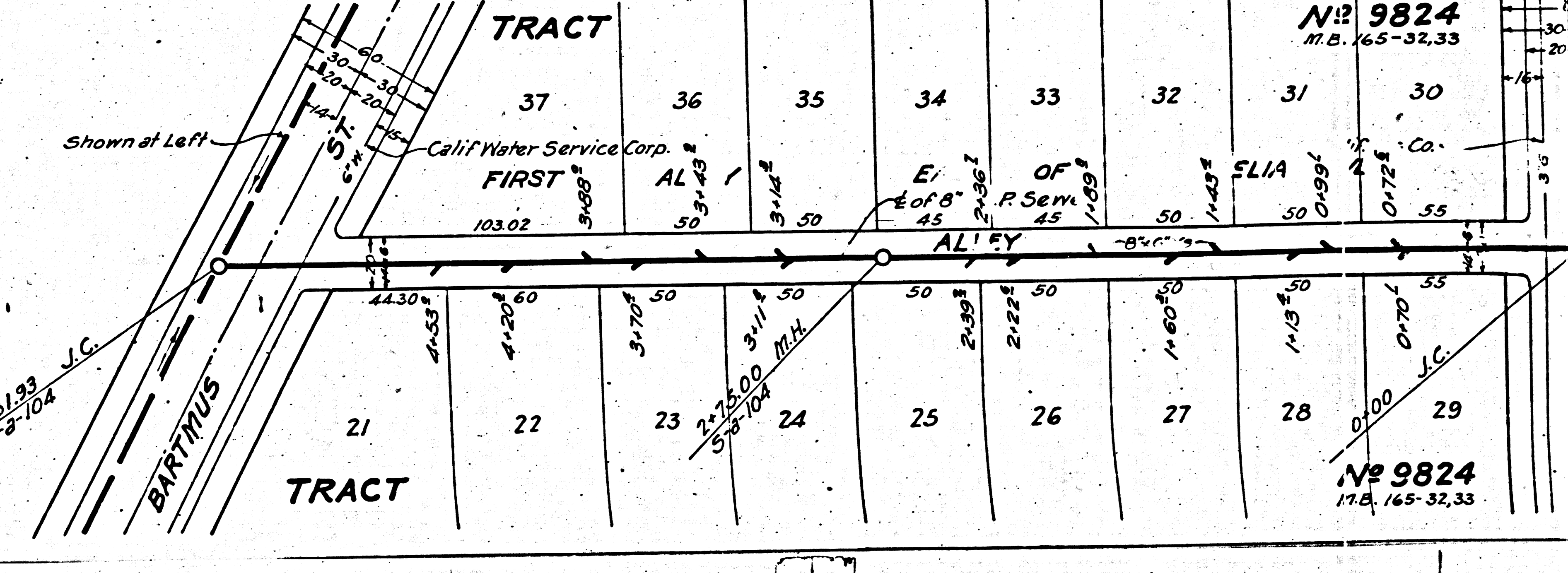
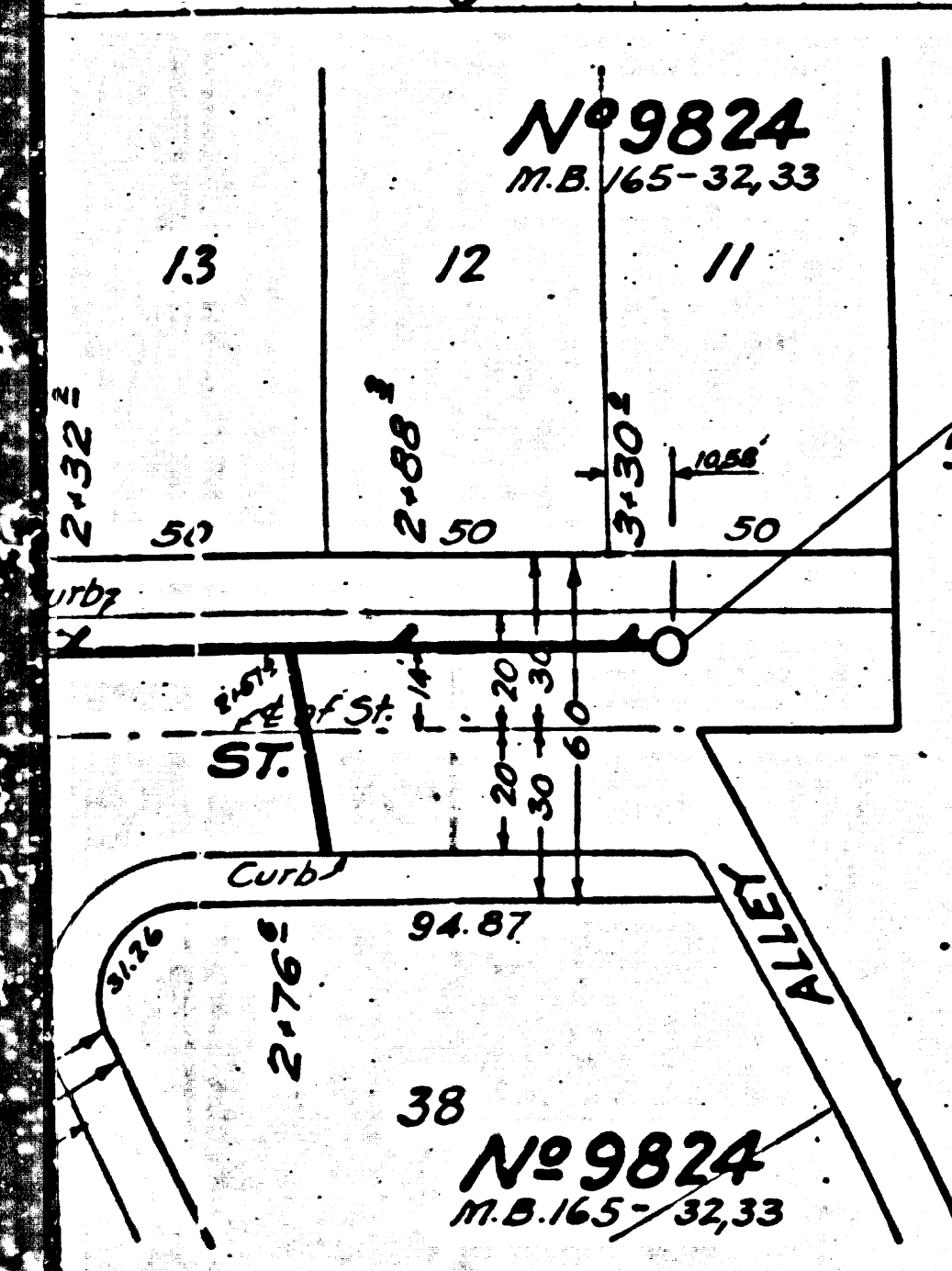
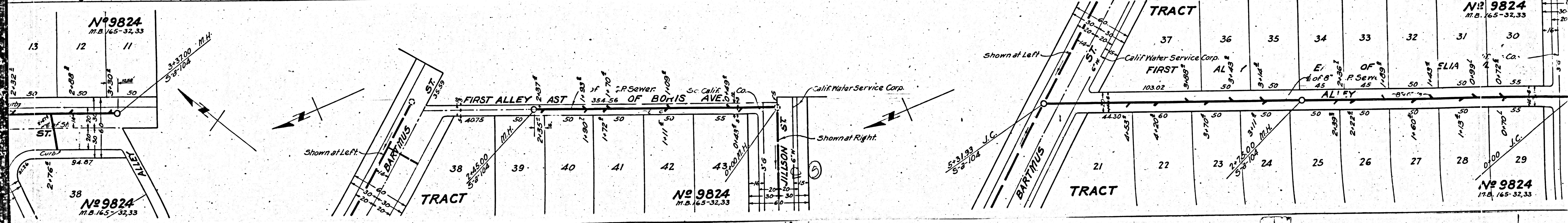
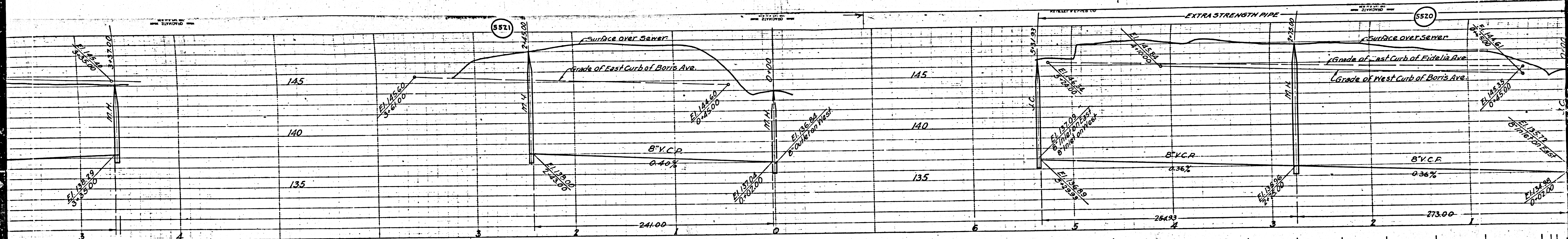
M6



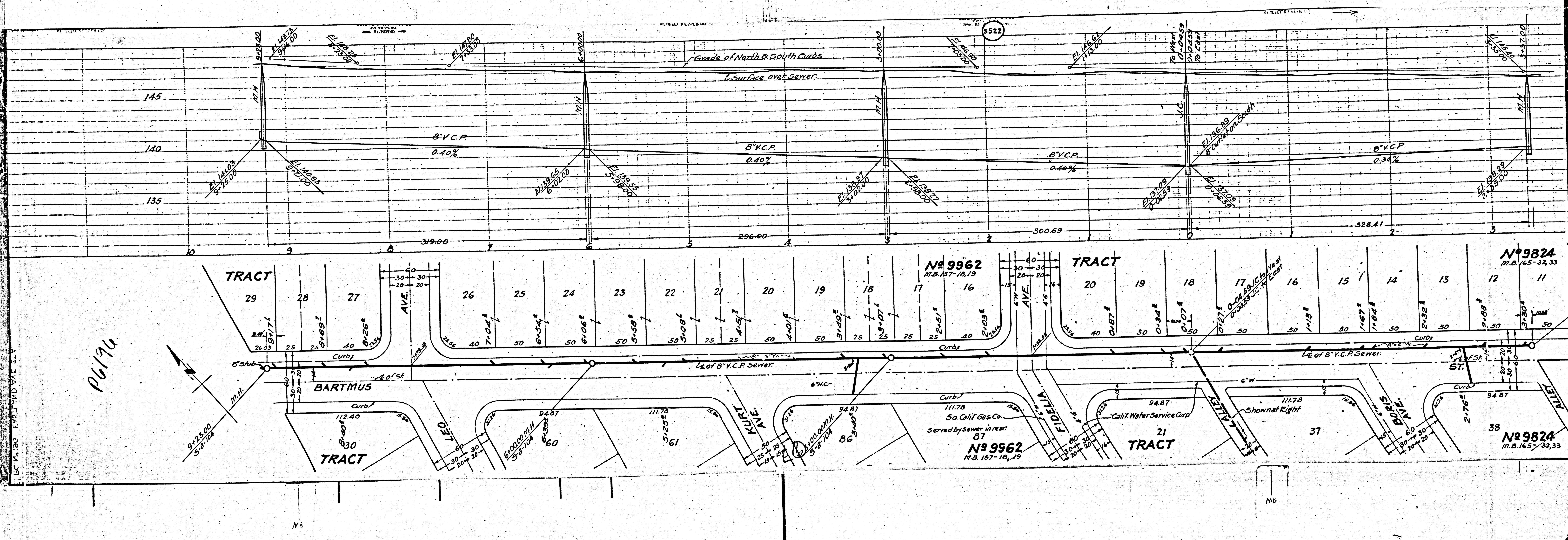


M5

M6



11111



P6196

BC 14.30 E 172.140 V 14.30

M5

M5