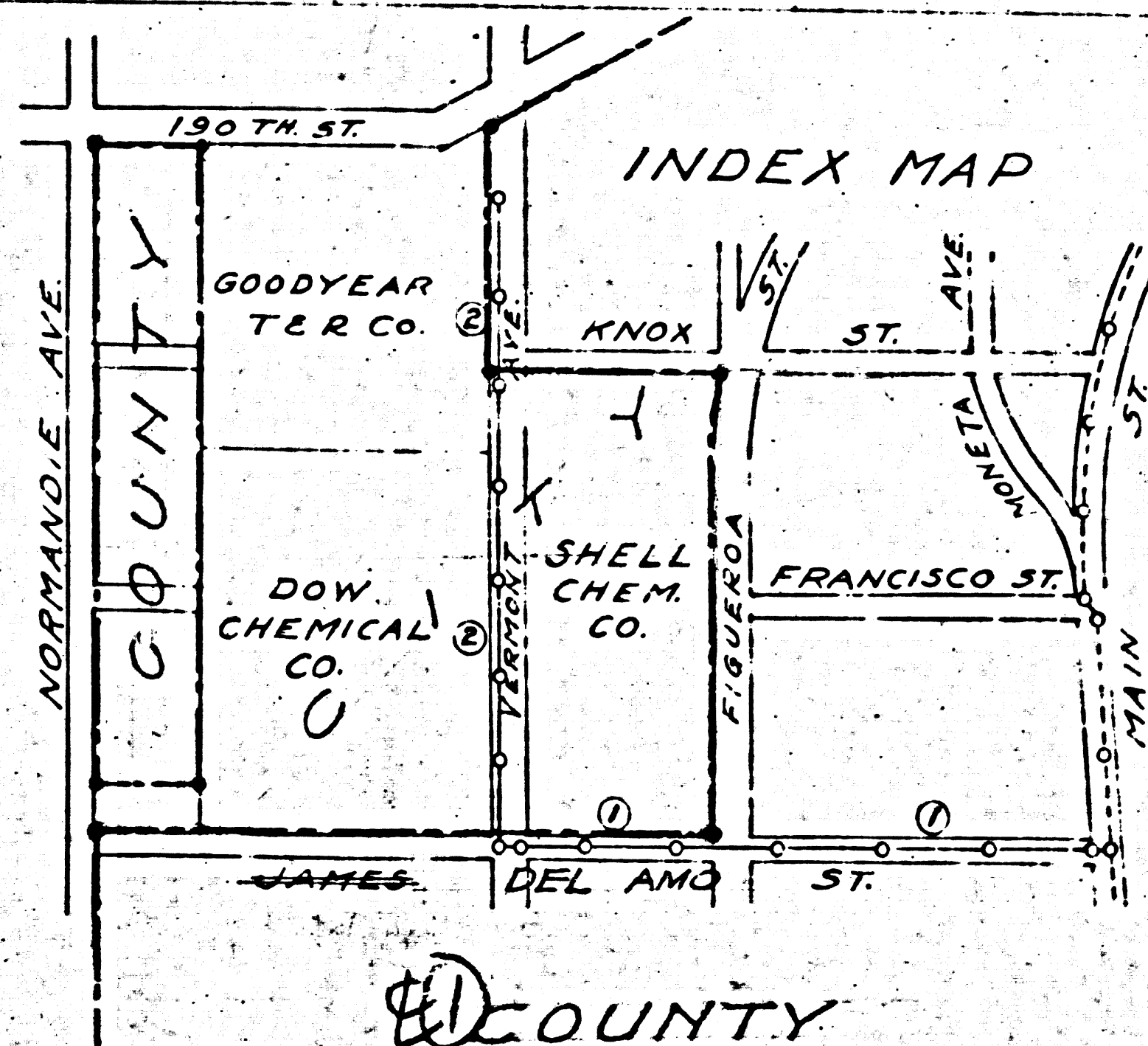


- NOTES**
- 1 - Use Special Concrete Man-hole Frames and Wood Covers - Plan No. S-a-iii, except as noted.
  - 2 - Use Extra Strength Pipe, except as noted.
  - 3 - Use cement mortar for pipe joints.
  - 4 - Meet Los Angeles County Road Dept. or State Highway requirements in tunneling under all existing pavements.
  - 5 - Use 1/2 sections of V.C.P. through all manholes. Plan No. S-a-ii.
  - 6 - Encase four feet of sewer at points of interference with Poles as per S-a-6.



PROFILE, ALIGNMENT AND GRADE OF  
**SANITARY SEWERS**  
 TO BE CONSTRUCTED IN  
**JAMES STREET**  
 BETWEEN MAIN STREET AND VERMONT AVE.  
 IN TRACT NO. 4671, M. B. 56-30-31

**PRIVATE CONTRACT NO. 197**  
 W.S. 26

**SHEET 1 OF 2 SHEETS**

SCALE VERT. 1"=4'  
 HORIZ. 1"=40' FOR LEGEND SEE PLAN No. S-a-64

OCTOBER 1942

PREPARED IN THE OFFICES OF  
**STONE AND WEBSTER ENGINEERING CORPORATION**  
 BY *Robert W. Stone* REG. C.E. NO. 2151  
 DIVISION ENGINEER

**NOTE:**

GRADES TO WHICH THIS IMPROVEMENT IS TO BE CONSTRUCTED ARE SHOWN ON PLAN AND PROFILE. GRADE POINTS FOR TOP OF CURB, CENTER LINE OF STREET OR CENTER LINE OF ALLEY ARE SHOWN BY CIRCLES ON PROFILES. AT ALL POINTS BETWEEN DESIGNATED POINTS THE GRADE SHALL BE ESTABLISHED SO AS TO CONFORM TO A STRAIGHT LINE DRAWN BETWEEN SAID DESIGNATED POINTS. ELEVATIONS ARE IN FEET ABOVE U.S. DATUM OR MEAN SEA LEVEL.

THIS DRAWING AND THE DATA HEREON ARE HEREBY MADE A PART OF THE SPECIFICATIONS. WORK SHALL BE CONSTRUCTED ACCORDING TO SPECIFICATIONS ON FILE IN THE OFFICE OF THE COUNTY ENGINEER AND SHALL BE PROSECUTED ONLY IN THE PRESENCE OF THE COUNTY ENGINEER. BEFORE WORK CAN BE STARTED THE CONTRACTOR MUST OBTAIN A PERMIT TO EXCAVATE IN COUNTY STREETS FROM THE L.A. COUNTY ROAD DEPT., 1104 HALL OF RECORDS, AND MAKE A DEPOSIT WITH THE COUNTY ENGINEER, 700 UNION LEAGUE BUILDING, SUFFICIENT TO COVER THE COST OF CONSTRUCTION INSPECTION AND RECORD PLANS.

IF WORK IS TO BE DONE IN A STATE HIGHWAY, A PERMIT MUST BE OBTAINED FROM THE STATE OF CALIFORNIA, DIVISION OF HIGHWAYS, 808 STATE BUILDING AFTER MAKING THE DEPOSIT WITH THE COUNTY ENGINEER.

COUNTY OF LOS ANGELES, CALIFORNIA

APPROVED *Alfred Jones*  
 COUNTY ENGINEER

APPROVED *Robert W. Stone*  
 DIVISION ENGINEER

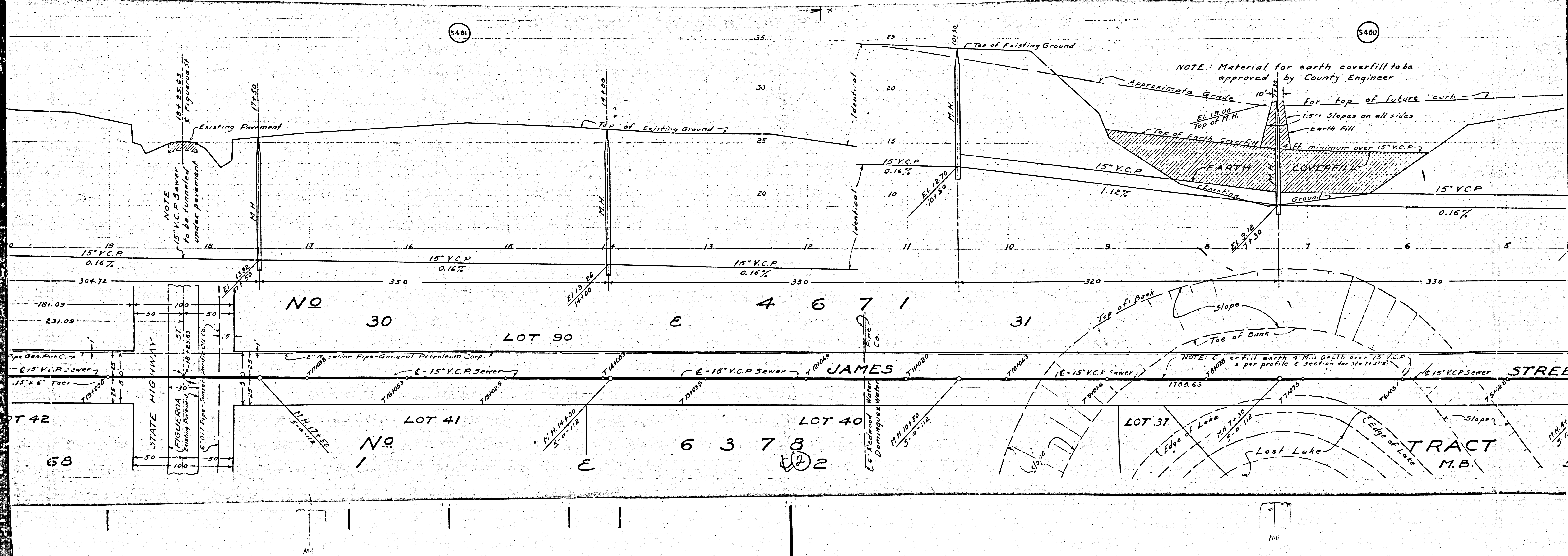
CHECKED BY *William G. ...* 1942  
 OFFICE OF COUNTY ENGINEER REG. C.E. NO. 2151

1942



5481

5480



NOTE: Material for earth coverfill to be approved by County Engineer for top of future curb.

NOTE: Material for earth coverfill to be approved by County Engineer for top of future curb.

NOTE: Material for earth coverfill to be approved by County Engineer for top of future curb.

NOTE: Material for earth coverfill to be approved by County Engineer for top of future curb.

NOTE: Material for earth coverfill to be approved by County Engineer for top of future curb.

NOTE: Material for earth coverfill to be approved by County Engineer for top of future curb.

NOTE: Material for earth coverfill to be approved by County Engineer for top of future curb.

NOTE: Material for earth coverfill to be approved by County Engineer for top of future curb.

NOTE: Material for earth coverfill to be approved by County Engineer for top of future curb.

NOTE: Material for earth coverfill to be approved by County Engineer for top of future curb.

NOTE: Material for earth coverfill to be approved by County Engineer for top of future curb.

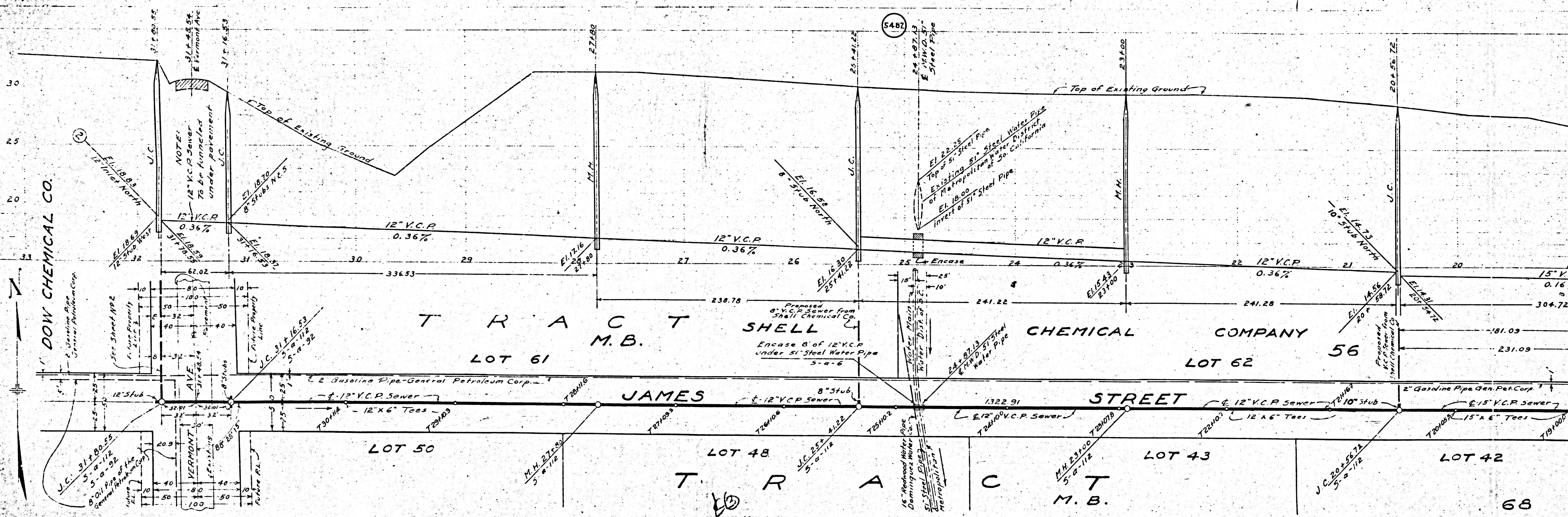
NOTE: Material for earth coverfill to be approved by County Engineer for top of future curb.

NOTE: Material for earth coverfill to be approved by County Engineer for top of future curb.

NOTE: Material for earth coverfill to be approved by County Engineer for top of future curb.

NOTE: Material for earth coverfill to be approved by County Engineer for top of future curb.

NOTE: Material for earth coverfill to be approved by County Engineer for top of future curb.



DOW CHEMICAL CO.

T R A C T  
M. B.  
LOT 61

SHELL  
CHEMICAL COMPANY  
LOT 62

JAMES STREET

LOT 56

LOT 50

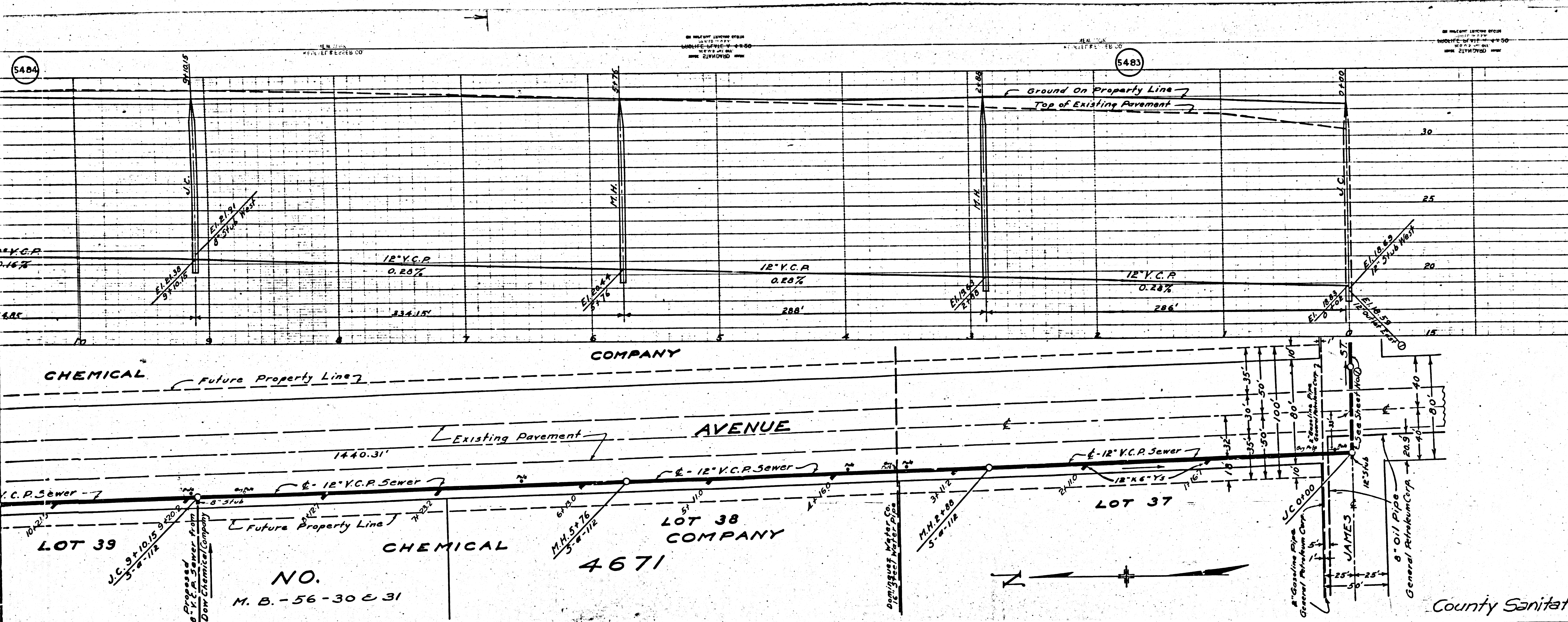
LOT 48

LOT 43

LOT 42

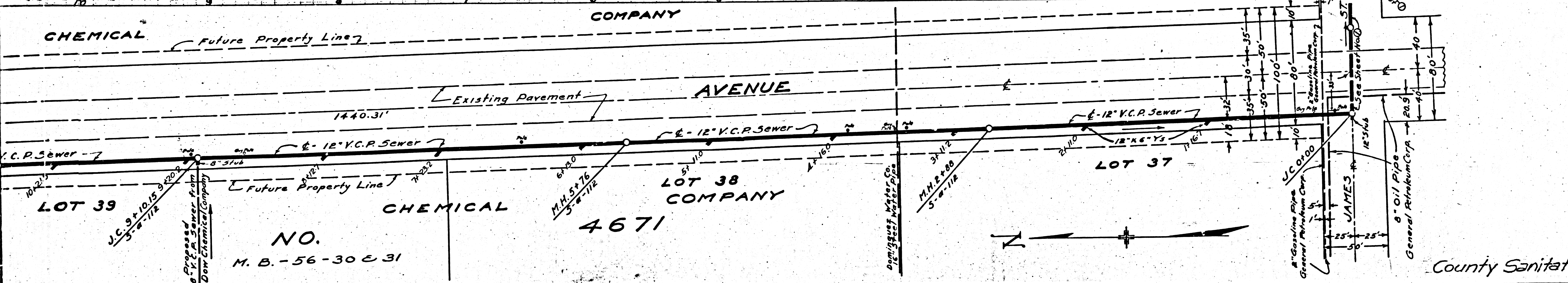
T R A C T  
M. B.

68



PROFILE, ALIGNMENT AND GRADE OF  
**SANITARY SEWERS**  
 TO BE CONSTRUCTED IN  
**VERMONT AVENUE**  
 BETWEEN JAMES ST. AND ONE HUNDRED NINETEETH ST.  
 IN TRACT NO. 4671, M.B. 56-30 E 31  
**PRIVATE CONTRACT NO. 197**  
 W.S. 26  
**SHEET 2 OF 2 SHEETS**  
 SCALE VERT. 1" = 4'  
 HORIZONTAL 1" = 40'  
 OCTOBER 1942  
 PREPARED IN THE OFFICES OF  
**STONE AND WEBSTER ENGINEERING CORPORATION**  
 BY *Edward J. Fitzgerald* REG. C.E. No. 2107

FOR NOTES SEE SHEET NO. 1



COUNTY OF LOS ANGELES, CALIFORNIA  
 APPROVED *Alfred Jones*  
 COUNTY ENGINEER  
 APPROVED *Charles Jones*  
 CHIEF ENGINEER OF COUNTY  
 SANITATION DISTRICT NO. 8  
 County Sanitation Dist. No. 8  
 CHECKED BY *Madison G. Johnson* 1342  
 OFFICE OF COUNTY ENGINEER REG. E. NO. 2119

7915

2

5485

5486

