

5523

B.M. IN 55 EL. 36.184 RD DEPT. FB-BAI-1-11
& of Sepulveda Blvd. at Avalon Blvd.
Lead & Nail in Conc. Pav. 17 1/2' at Edge of Pavement

- 1 USE STANDARD STRENGTH PIPE EXCEPT AS NOTED
- 2 USE CEMENT MORTAR FOR ALL PIPE JOINTS
- 3 USE WOOD HANDHOLE COVERS AND CONCRETE FRAMES AS PER S-3-11
- 4 RESURFACE TRENCH WITHIN PAVED AREA AND TUNNEL UNDER SEPULVEDA BLVD. TO MEET L.A. COUNTY ROAD DEPARTMENT REQUIREMENTS
- 5 CONSTRUCT HOUSE CONNECTIONS WITH INVERT AT PROPOSED FLOOR LINE 4 FT. BELOW CURB GRADE
- 6 ENCASE 4 FT. OF SEWER AT POINTS OF INTERFERENCE WITH POLES AS PER S-3-6
- 7 THE GRADING OF PANAMA ST. AND THE CONSTRUCTION OF NEW DITCH BELOW SEPULVEDA BLVD. WILL BE DONE AS PART OF STREET GRADING CONTRACT.

PROFILE, ALIGNMENT AND GRADE OF
SANITARY SEWERS
 TO BE CONSTRUCTED IN
PANAMA AVE.
 BETWEEN BONDS ST. AND 237TH ST.
237TH ST.
 BETWEEN MADREL AVE. AND CATSKILL AVE.
 BETWEEN 235th PL. AND TRUCK LINE OF TRUCK INVD.

PRIVATE CONTRACT NO. 703
 W.S. 28
 SHEET 1 OF 2 SHEETS

NOV 1942

PREPARED IN THE OFFICE OF
THOMAS S. SARSENT,
 COUNTY ENGINEER
 COUNTY OF LOS ANGELES, CALIFORNIA

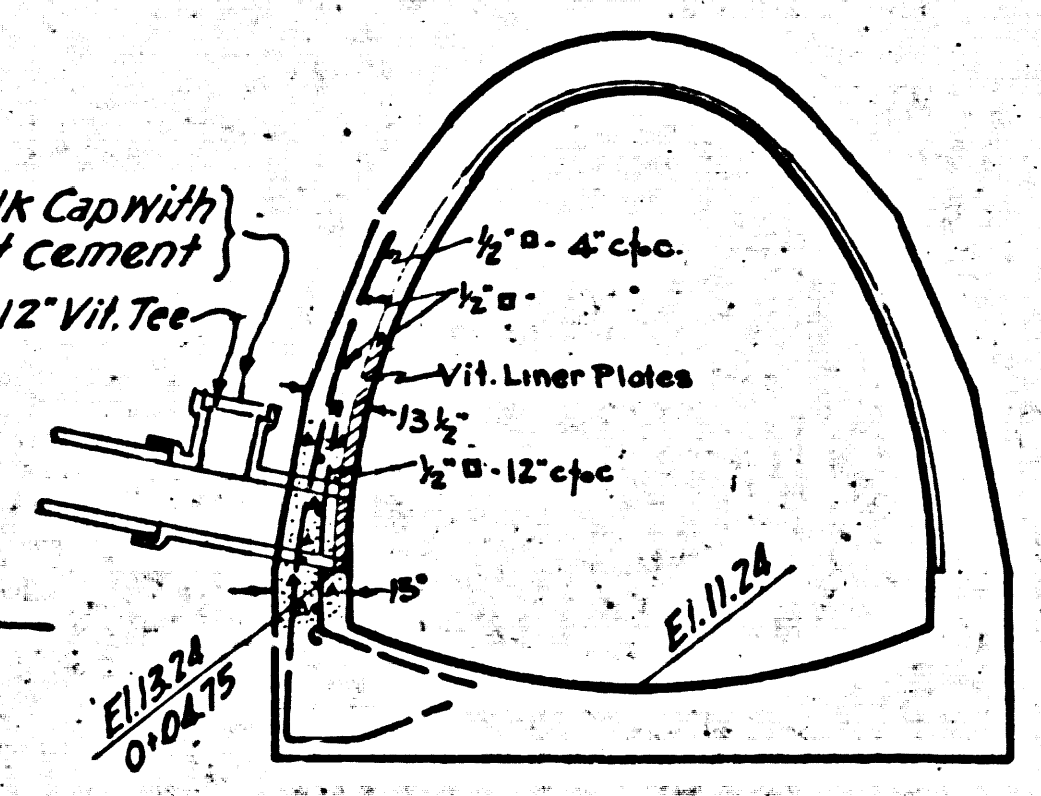
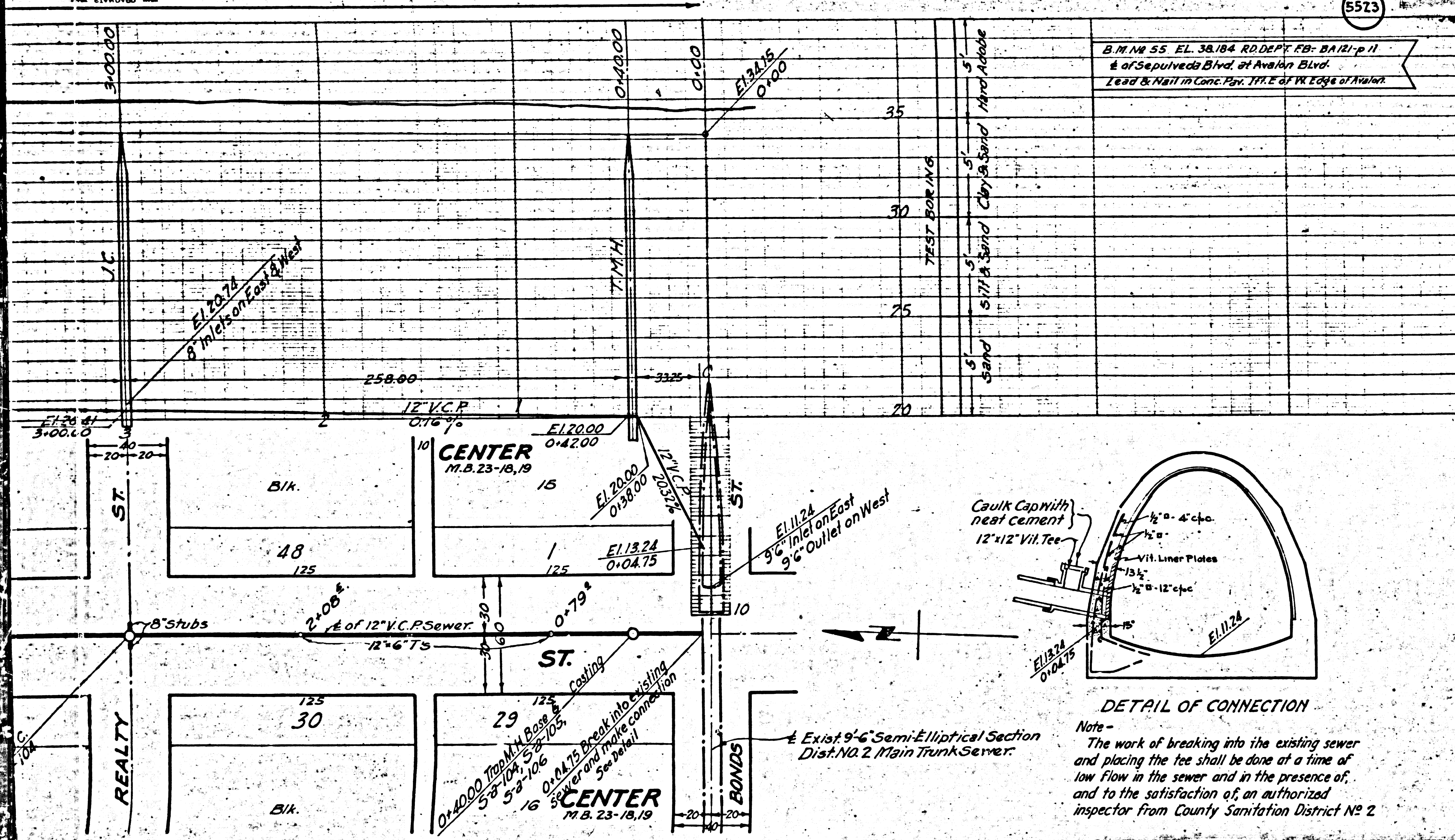
FOR LEGEND
 SEE PLAN NO. S-9-64

NOTE:
 GRADES TO WHICH THIS IMPROVEMENT IS TO BE CONSTRUCTED ARE SHOWN ON PLANS AND PROFILE.
 GRADE POINTS FOR TOP OF CURB, CENTER LINE OF STREET OR CENTER LINE OF ALLEY ARE SHOWN BY
 CIRCLES ON PROFILES. AT ALL POINTS BETWEEN DESIGNATED POINTS THE GRADE SHALL BE ESTABLISHED
 SO AS TO CONFORM TO A STRAIGHT LINE DRAWN BETWEEN SAID DESIGNATED POINTS.
 ELEVATIONS ARE IN FEET ABOVE U.S. & S. DATUM OR MEAN SEA LEVEL.
 THIS DRAWING AND THE DATA HEREON ARE HEREBY MADE A PART OF THE SPECIFICATIONS
 WORK SHALL BE CONSTRUCTED ACCORDING TO SPECIFICATIONS ON FILE IN THE OFFICE OF THE
 COUNTY ENGINEER AND SHALL BE PROSECUTED ONLY IN THE PRESENCE OF THE COUNTY ENGINEER.
 BEFORE WORK CAN BE STARTED, THE CONTRACTOR MUST OBTAIN A PERMIT TO EXCAVATE IN
 COUNTY STREETS FROM THE L.A. COUNTY ROAD DEPT., 404 HALL OF RECORDS, AND MAKE A
 DEPOSIT WITH THE COUNTY ENGINEER, 700 UNDEVELOPED BUILDING, SUFFICIENT TO COVER THE
 COST OF CONSTRUCTION INSPECTION AND RECORD PLANS.
 COUNTY OF LOS ANGELES, CALIFORNIA

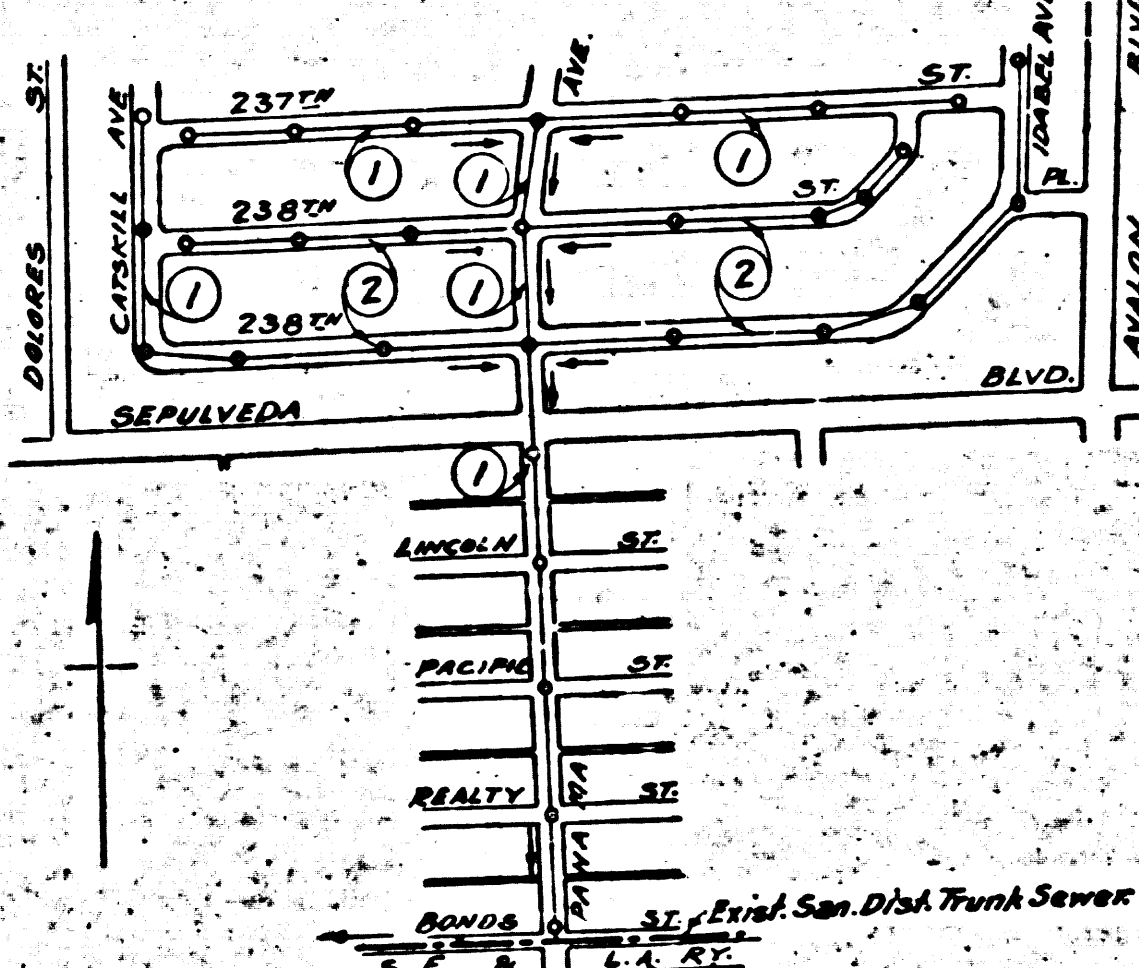
APPROVED *Alfred Jones*
 COUNTY ENGINEER
 APPROVED *C. S. Constan*
 DIST. COUNTY ENGINEER'S OFFICE
 SANITARY DIVISION

RECORDED
 JAN 26 1943
 SANITARY DIVISION

CHECKED BY *William Bell* 1-5-1943
 OFFICE OF COUNTY ENGINEER, LOS ANGELES, CALIF.

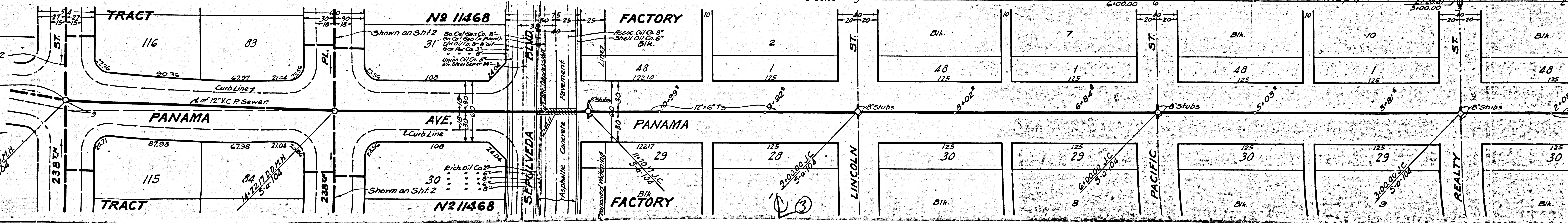
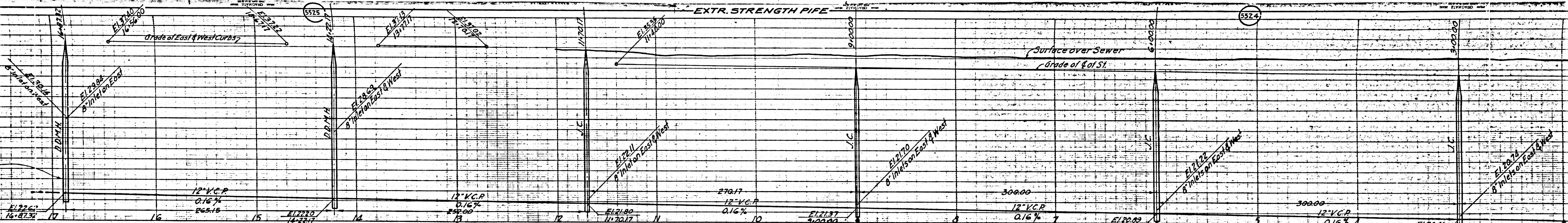
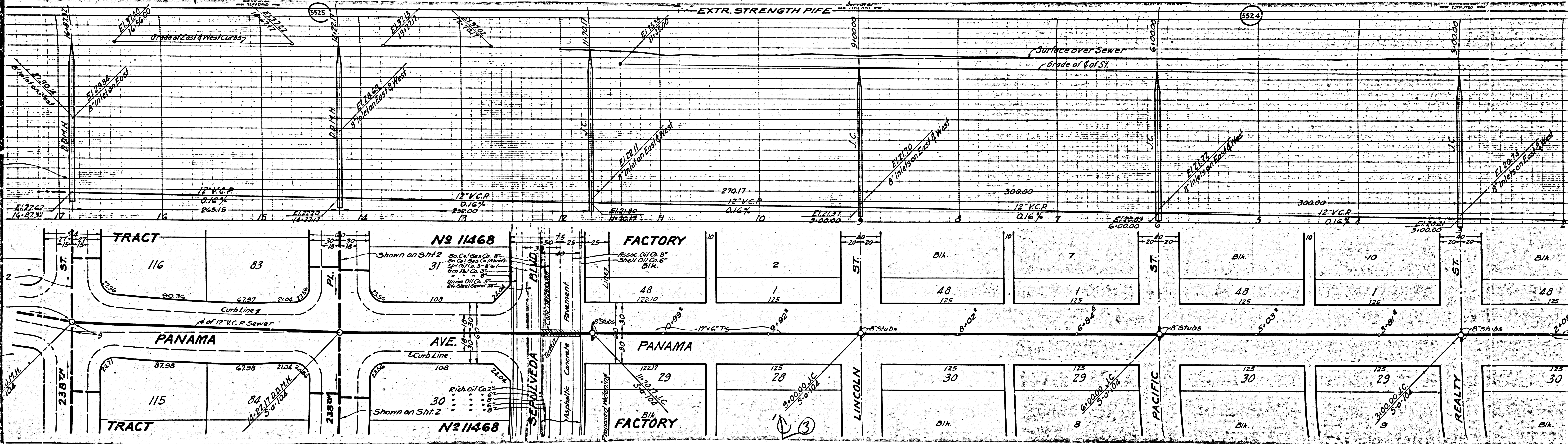


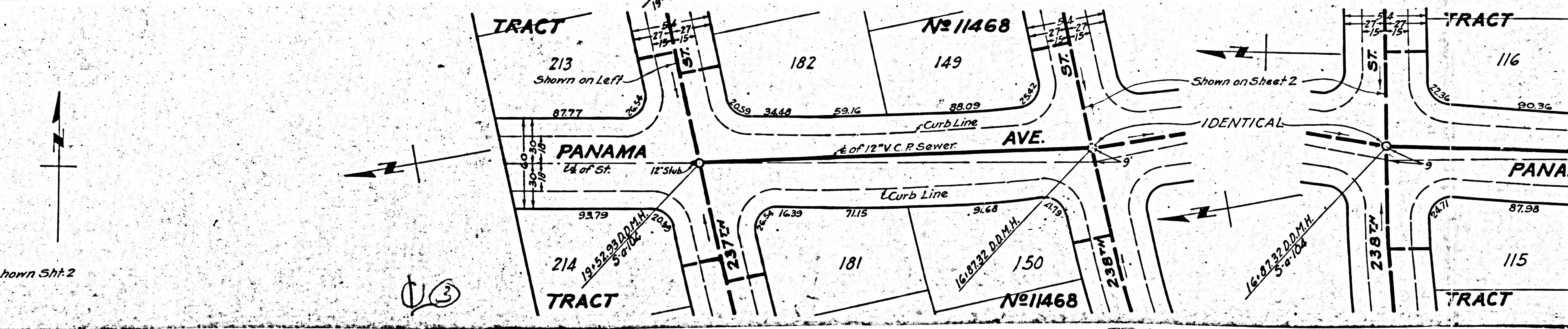
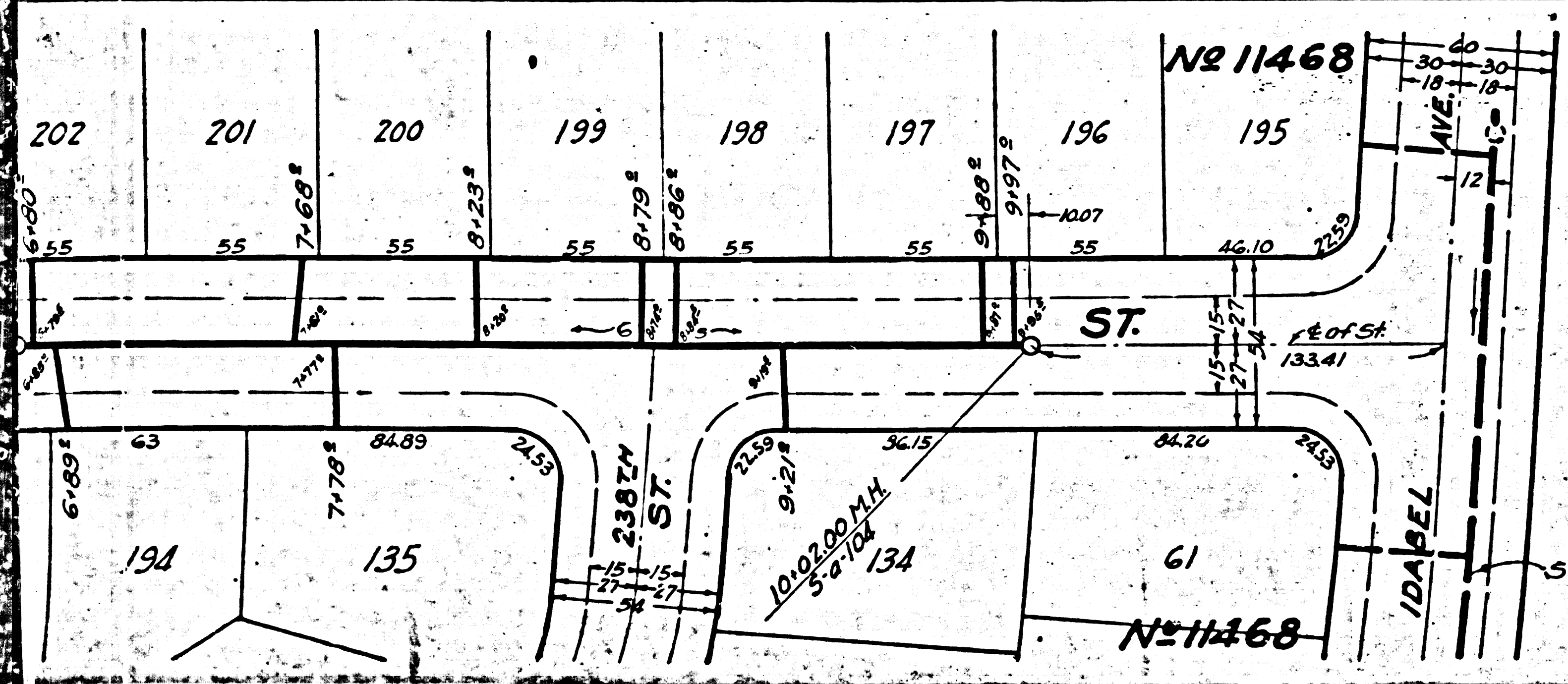
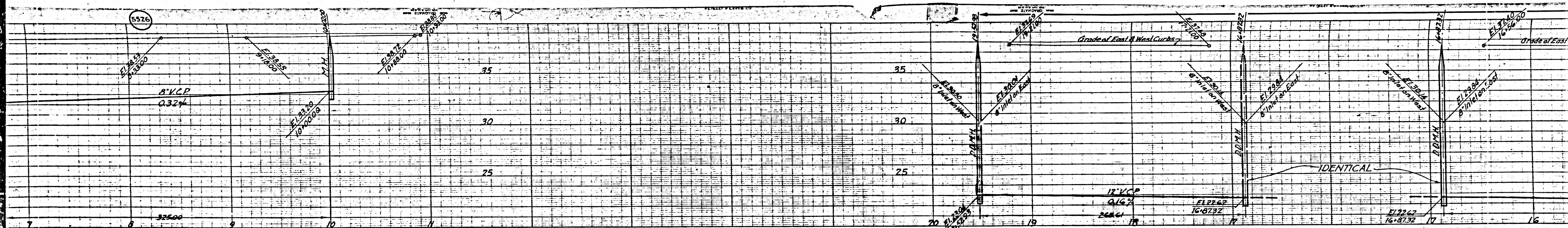
DETAIL OF CONNECTION
 Note -
 The work of breaking into the existing sewer and placing the tee shall be done at a time of low flow in the sewer and in the presence of, and to the satisfaction of, an authorized inspector from County Sanitation District No. 2



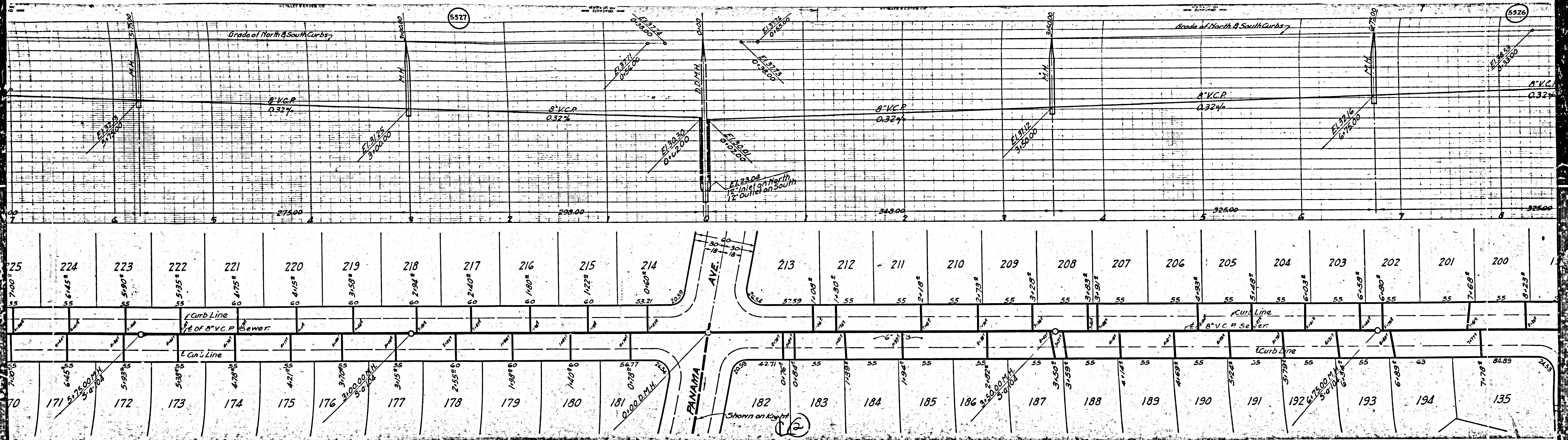
INDEX MAP

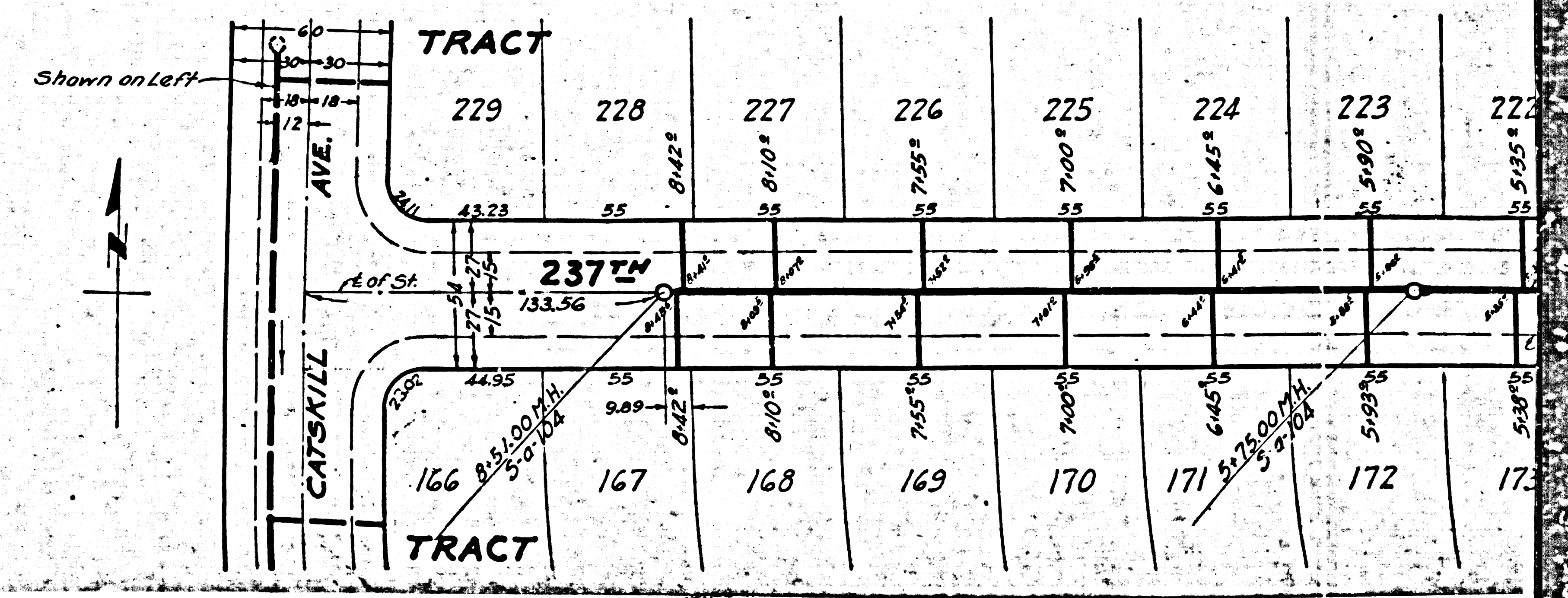
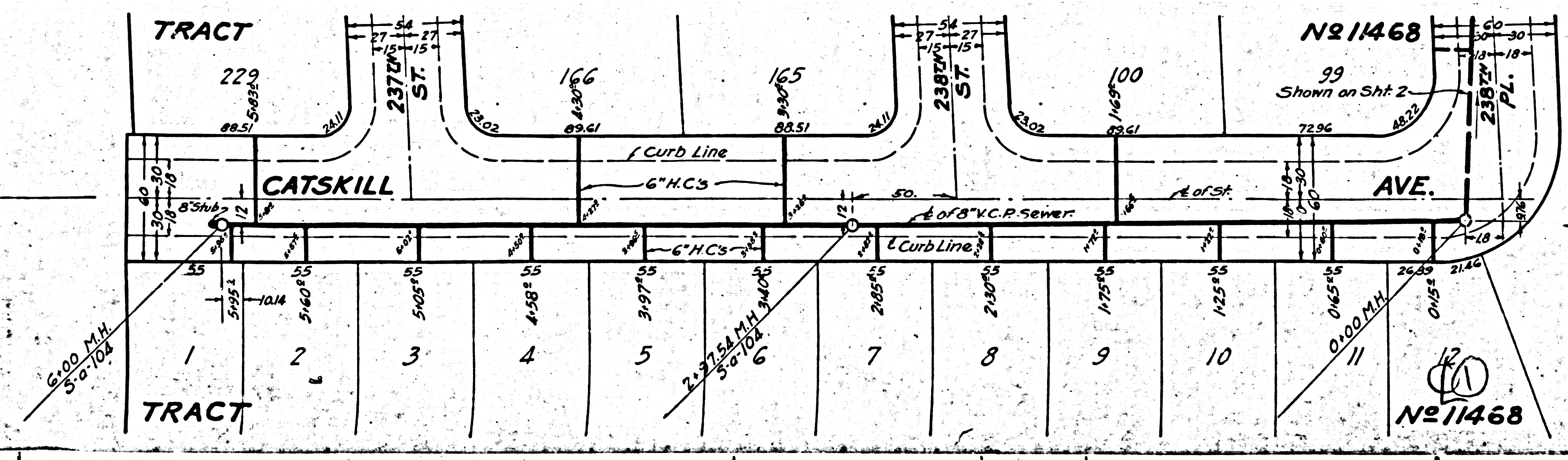
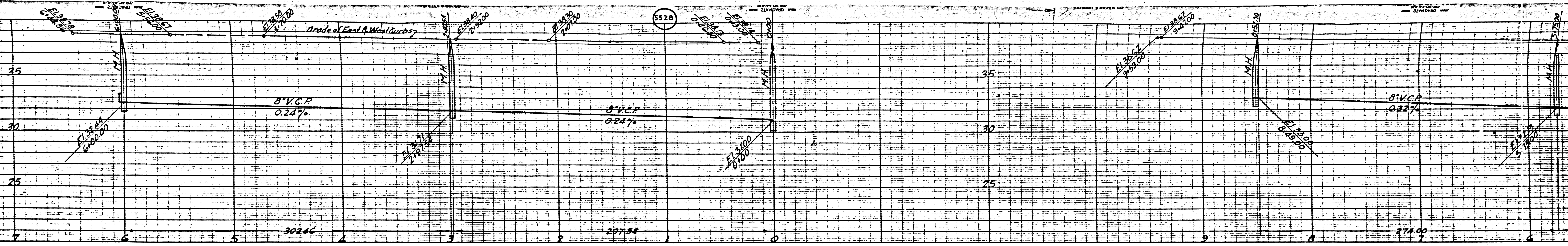
BC 503

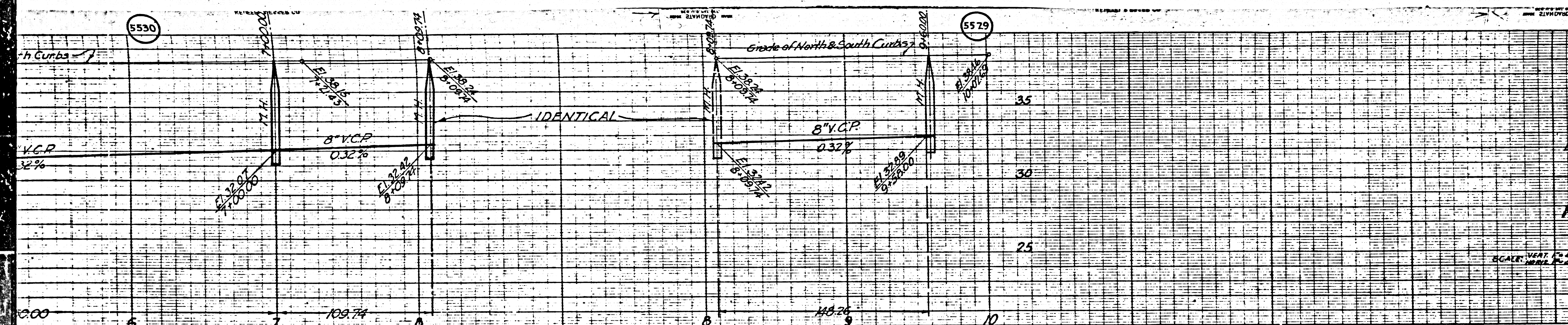




13







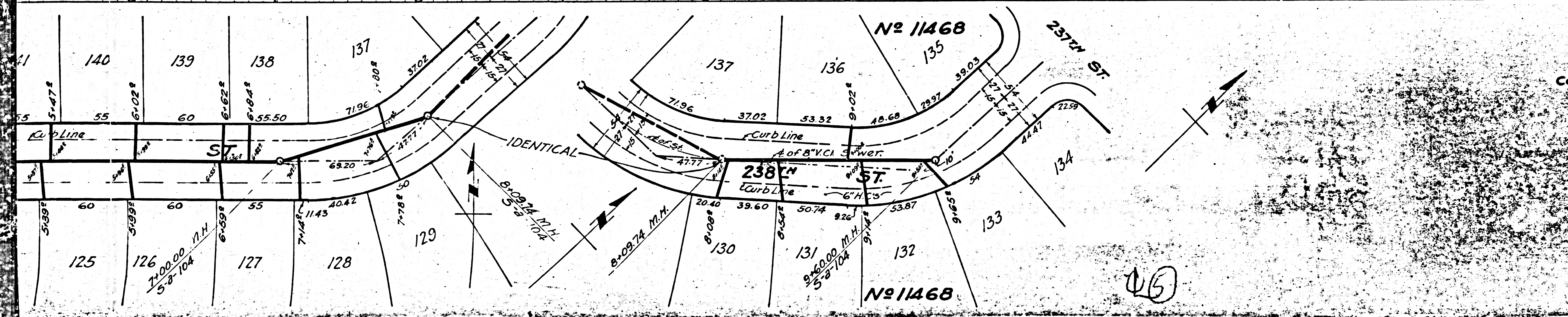
PROFILE, ALIGNMENT AND GRADES OF
SANITARY SEWERS
 TO BE CONSTRUCTED IN
238TH ST.
 BETWEEN 237TH ST AND CATSKILL AVE.
IDABEL AVE.
 BETWEEN 238TH PL. AND THE LINE OF TR 1166.
238TH PL.
 BETWEEN IDABEL AVE. AND CATSKILL AVE.

PRIVATE CONTRACT NO. 203
 N. G. 28
 SHEET 2 OF 2 SHEETS

PREPARED IN THE OFFICE OF
 THOMAS B. SARGENT
 CIVIL ENGINEER
 1800 W. 11TH ST. LOS ANGELES, CALIF.

NOV 1943

SCALE: VERT. 1" = 10'
 HORIZ. 1" = 20'



COUNTY OF LOS ANGELES, CALIFORNIA

APPROVED: *Alfred Gomez*
 CIVIL ENGINEER

APPROVED: *C.P. Smith*
 CIVIL ENGINEER

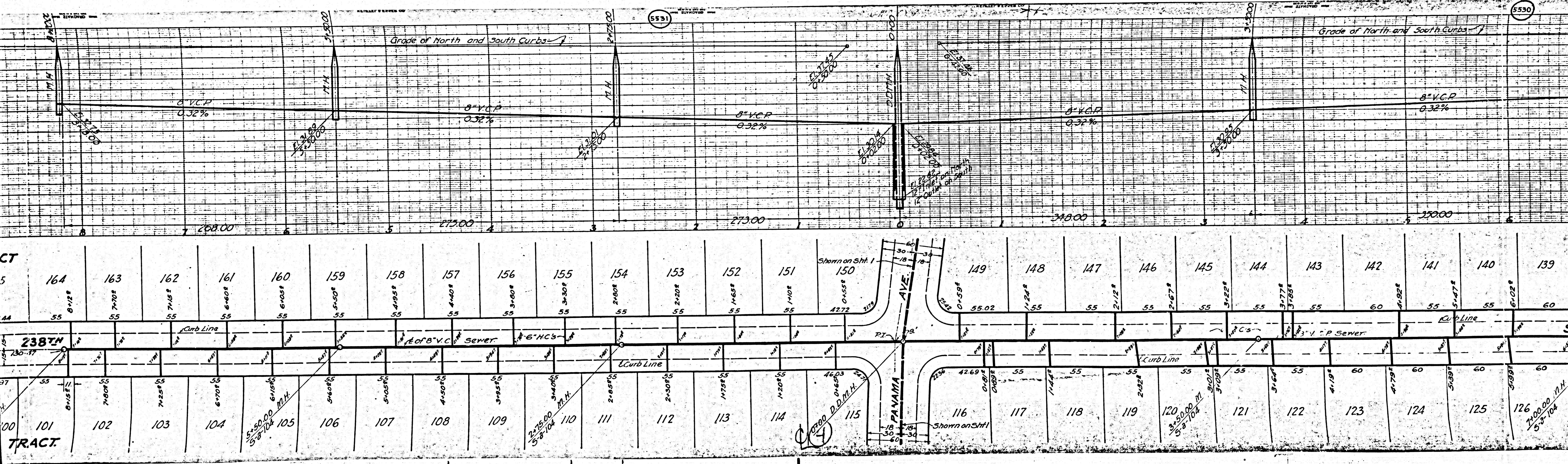
JAN 26 1943
 SANITARY DIVISION

CHECKED BY *John Salzman*
 CIVIL ENGINEER

BO 5033

5531

5530



CT
5
AA
97
00
TRACT

5-3500
5-8-104

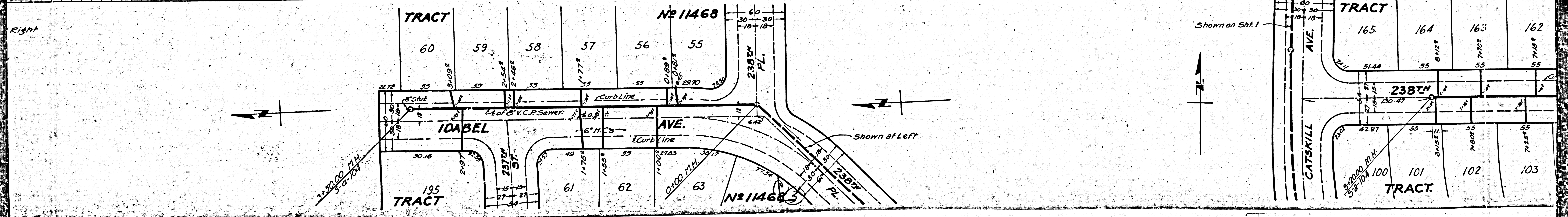
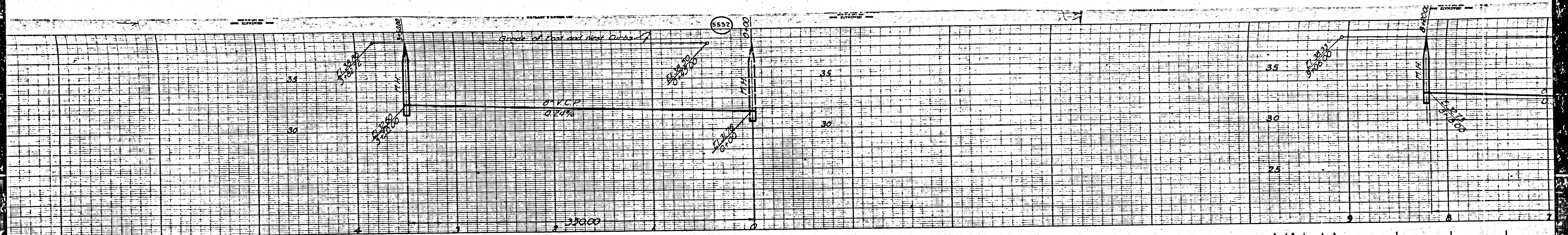
2-27500
3-8-104

2-25000
3-8-104

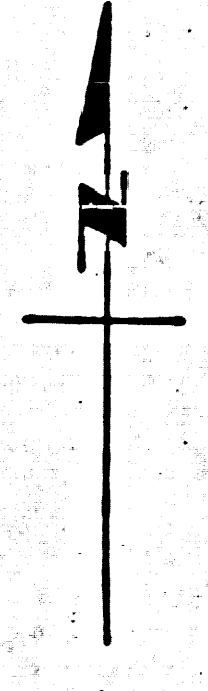
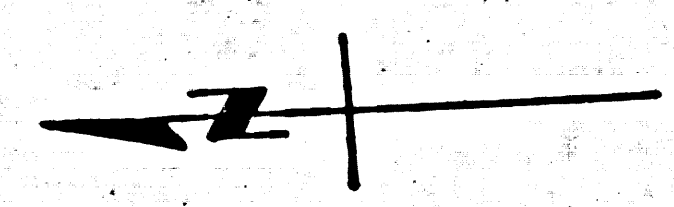
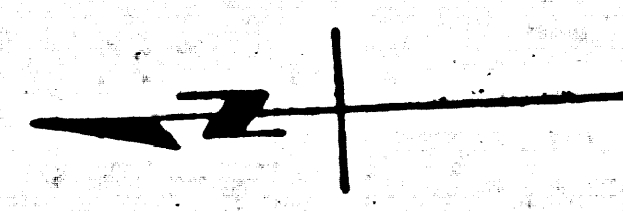
2-27500
3-8-104

Shown on Sht. 1
150
0-6552
4272

Shown on Sht. 1
116
0-0807
4269



Right



Shown at Left

Shown on Sht. 1

