

1. USE STANDARD STRENGTH PIPE EXCEPT AS NOTED
 2. USE CEMENT MORTAR FOR ALL PIPE JOINTS
 3. RESURFACE ALL TRENCH WITHIN PAVED AREA TO MEET LOS ANGELES COUNTY ROAD DEPT. REQUIREMENTS
 4. ENCASE FOUR FEET OF SEWER AT POINTS OF INTERFERENCE WITH POLES AS PER SPEC.
 5. USE WOOD MANHOLE COVERS & CONCRETE FRAMES S & H
- E.M. 10A, FL 1713 L.A. Co. Rd. Dept. B.O. 469-2
 N.W. Cor. Washington Blvd. & Atlantic Blvd.
 Spk. in E.G.R.

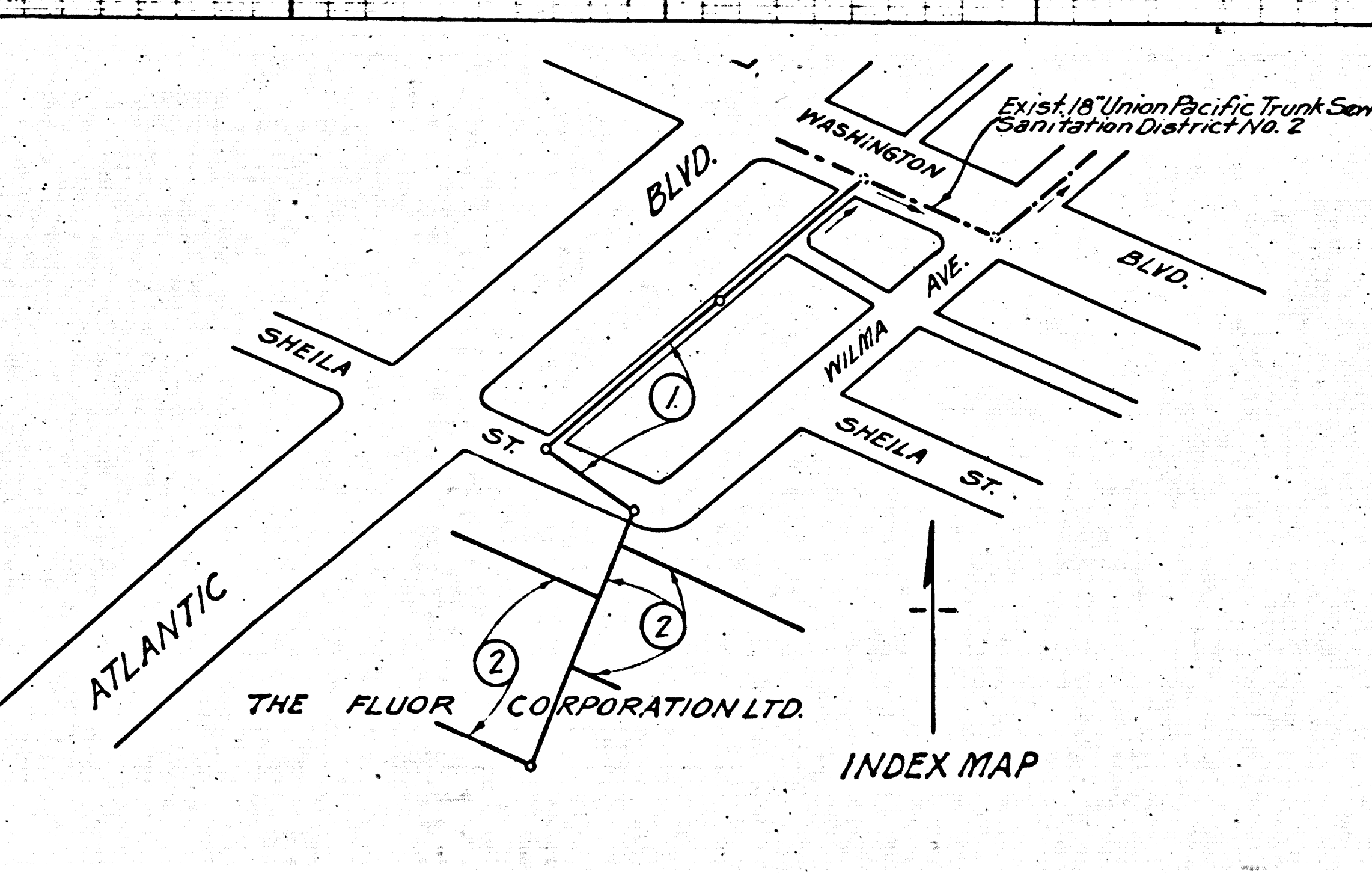
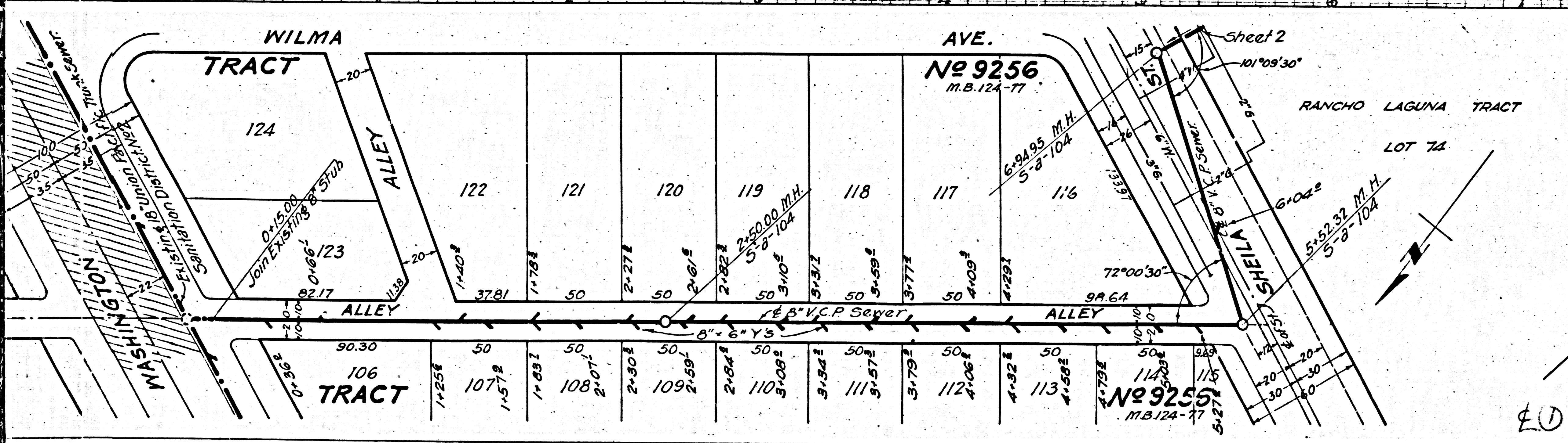
PROFILE, ALIGNMENT AND GRADE OF
SANITARY SEWERS
 TO BE CONSTRUCTED IN
FIRST ALLEY WEST OF WILMA AVE.
 BETWEEN SHEILA ST. & WASHINGTON BLVD.
 AND IN A PORTION OF
SHEILA ST.

PRIVATE CONTRACT NO. 222
 W.S.36
SHEET 1 OF 2 SHEETS
 JUNE 1943

PREPARED IN THE OFFICE OF
THOS. B. SARGENT,
 BY: *John R. Sargent*
 REG. C.E. NO. 1268.

FOR LEGEND
 SEE PLAN NO. S-64

NOTE:
 GRADES TO WHICH THIS IMPROVEMENT IS TO BE CONSTRUCTED ARE SHOWN ON PLANS AND PROFILE.
 GRADE POINTS FOR TOP OF CURB, CENTER LINE OF STREET OR CENTER LINE OF ALLEY ARE SHOWN BY
 CIRCLES ON PROFILE; AT ALL POINTS BETWEEN DESIGNATED POINTS THE GRADE SHALL BE ESTABLISHED
 SO AS TO CONFORM TO A STRAIGHT LINE DRAWN BETWEEN SAID DESIGNATED POINTS.
 ELEVATIONS ARE IN FEET ABOVE U.S.C. & G.S. DATUM OR MEAN SEA LEVEL.
 THIS DRAWING AND THE DATA HEREON ARE HEREBY MADE A PART OF THE SPECIFICATIONS.
 WORK SHALL BE CONSTRUCTED ACCORDING TO SPECIFICATIONS ON FILE IN THE OFFICE OF THE
 COUNTY ENGINEER AND SHALL BE PROSECUTED ONLY IN THE PRESENCE OF THE COUNTY ENGINEER.
 BEFORE WORK CAN BE STARTED THE CONTRACTOR MUST OBTAIN A PERMIT TO EXCAVATE IN
 CROSS-STREETS FROM THE L.A. COUNTY ROAD DEPT., 104 HALL OF RECORDS, AND MAKE A
 DEPOSIT WITH THE COUNTY ENGINEER, 700 UNION LEAGUE BUILDING, SUFFICIENT TO COVER THE
 COST OF CONSTRUCTION INSPECTION AND RECORD PLANS.



COUNTY OF LOS ANGELES, CALIFORNIA.
 APPROVED: *Alfred J. Jones*
 COUNTY ENGINEER

APPROVED: *John R. Sargent*
 CIVIL ENGINEER OF COUNTY
 SANITATION DISTRICT NO. 2

CHECKED BY: *John R. Sargent*
 OFFICE OF COUNTY ENGINEER REG. C.E. NO. 1268

RECEIVED
 JUL 15 1943
 SANITATION DISTRICT NO. 2