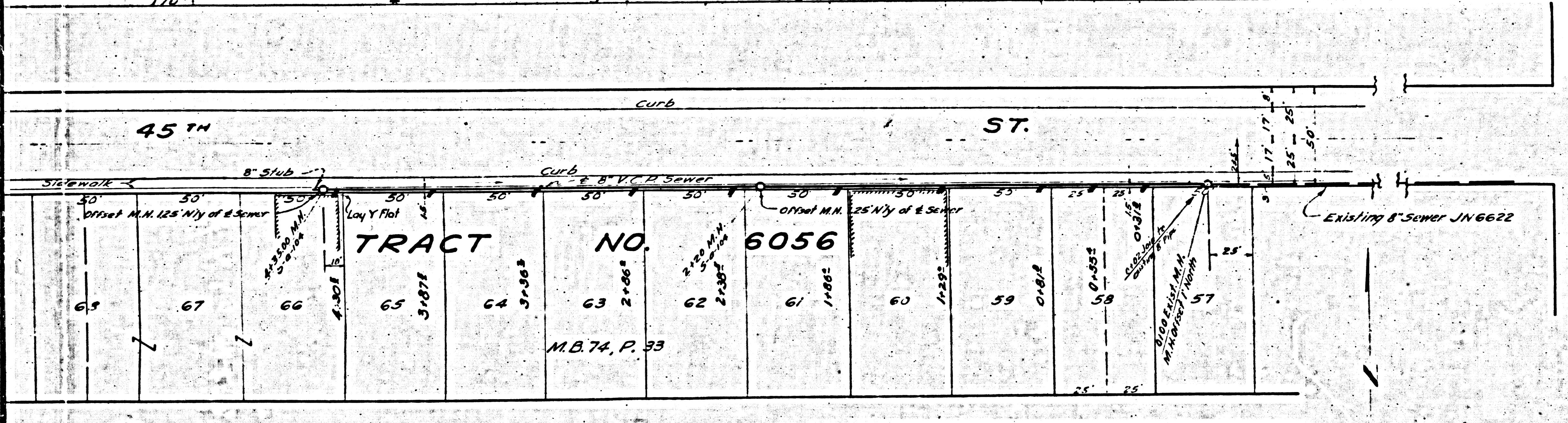


- (1) Use "Just-Rite" Manhole Frames and Covers.
- (2) Use Standard Strength Pipe.
- (3) Use Cement Mortar for all Vitrified Clay Pipe Joints.
- (4) Resurface all trench within paved area to meet Los Angeles County Road Department requirements.
- (5) Encase four feet of sewer at points of interference with poles as per S-a-6.

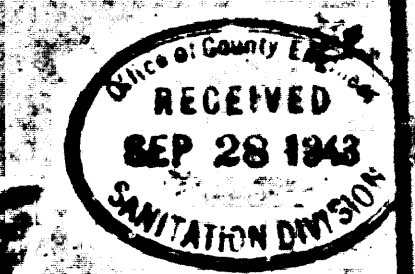
PROFILE ALIGNMENT AND GRADE OF
SANITARY SEWER
 TO BE CONSTRUCTED IN
45TH ST.
 BETWEEN A POINT 32.83' EAST AND A POINT 759.26' EAST OF ALCOA ST.

PRIVATE CONTRACT NO. 230
 SHEET 1 OF 1 SHEET
 SCALE 1" = 4' VERT., 1" = 40' HORIZ.
 PREPARED IN THE OFFICE OF
ENGINEERING SERVICE CORPORATION
 BY *X. P. Hill, Jr.*
 RE 42338
 FOR LEGEND
 See Plan No. S-a-64



GRADES TO WHICH THIS IMPROVEMENT IS TO BE CONSTRUCTED ARE SHOWN ON PLANS AND PROFILE. GRADE POINTS FOR TOP OF CURB, CENTER OF STREET OR CENTER LINE OF ALLEY ARE SHOWN BY CIRCLES ON PROFILE AT ALL POINTS BETWEEN DESIGNATED POINTS THE GRADE SHALL BE ESTABLISHED SO AS TO CONFORM TO A STRAIGHT LINE DRAWN BETWEEN SAID DESIGNATED POINTS. ELEVATIONS ARE IN FEET ABOVE U.S.G.S. DATUM OR MEAN SEA LEVEL. THIS DRAWING AND THE DATA HEREON ARE HEREBY MADE A PART OF THE SPECIFICATIONS. WORK SHALL BE CONSTRUCTED ACCORDING TO SPECIFICATIONS ON FILE IN THE OFFICE OF THE COUNTY ENGINEER AND SHALL BE PROSECUTED ONLY IN THE PRESENCE OF THE COUNTY ENGINEER. BEFORE WORK CAN BE STARTED THE CONTRACTOR MUST OBTAIN A PERMIT TO EXCAVATE IN COUNTY STREETS FROM THE L.A. COUNTY ROAD DEPT., 104 WALL OF RECORDS AND MAKE A DEPOSIT WITH THE COUNTY ENGINEER, 200 DUNN LEARIE BUILDING, SUFFICIENT TO COVER THE COST OF CONSTRUCTION, INSPECTION AND RECORD PLANS. IF WORK IS TO BE DONE IN A STATE HIGHWAY, A PERMIT MUST BE OBTAINED FROM THE STATE OF CALIFORNIA, DIVISION OF HIGHWAYS, 808 STATE BUILDING, AFTER MAKING THE DEPOSIT WITH THE COUNTY ENGINEER.

COUNTY OF LOS ANGELES, CALIFORNIA
 APPROVED *Alfred Jones* COUNTY ENGINEER
 APPROVED *C. P. Compton* ACTING CHIEF ENGINEER OF COUNTY SANITATION DISTRICT NO. 1
 CHECKED BY *H. L. Johnson* 9-27-43
 OFFICE OF COUNTY ENGINEER, REC'D NO. 3823



ED

EX 777 2/26/44

BO 530

PC 230

EQ

