

1. USE SPECIAL MANHOLE FRAMES AND COVERS (S-109) IN SEWER RIGHTS-OF-WAY.
2. USE JUB-BITE OR D&D SAFETY MANHOLE FRAMES AND COVERS IN STREETS.
3. USE CEMENT MORTAR FOR ALL PIPE JOINTS.
4. RESURFACE ALL TRENCH WITHIN PAVED AREA TO MEET LOS ANGELES COUNTY ROAD DEPT. REQUIREMENTS.
5. CONSTRUCT HOUSE CONNECTIONS WITH INVERT AT PROPERTY LINE 4 FEET BELOW CURB GRADE.
6. ENCASE FOUR FEET OF SEWER AT POINTS OF INTERFERENCE WITH POLES AS PER S-2-G.
7. MANHOLE TOPS IN SEWER RIGHTS OF WAY TO BE SIX INCHES ABOVE FINISHED GRADE.
8. USE STANDARD STRENGTH PIPE.

PROFILE ALIGNMENT AND GRADE OF
SANITARY SEWERS
 TO BE CONSTRUCTED IN
SANITARY SEWER RIGHT OF WAY
 BETWEEN KURT AVE. AND LEO AVE.
 AND
 BETWEEN LEO AVE. AND TRAVERS AVE.
 BETWEEN FIRST ALLEY NORTH OF WASHINGTON BLVD. AND BARTMUS ST.
SANITARY SEWER RIGHT OF WAY
 BETWEEN TRAVERS AVE. AND PATRICIA AVE.
 BETWEEN FIRST ALLEY NORTH OF WASHINGTON BLVD. AND FIRST ALLEY SOUTH OF BARTMUS ST.
BARTMUS ST.
 BETWEEN TRAVERS AVE. AND GASPER AVE.

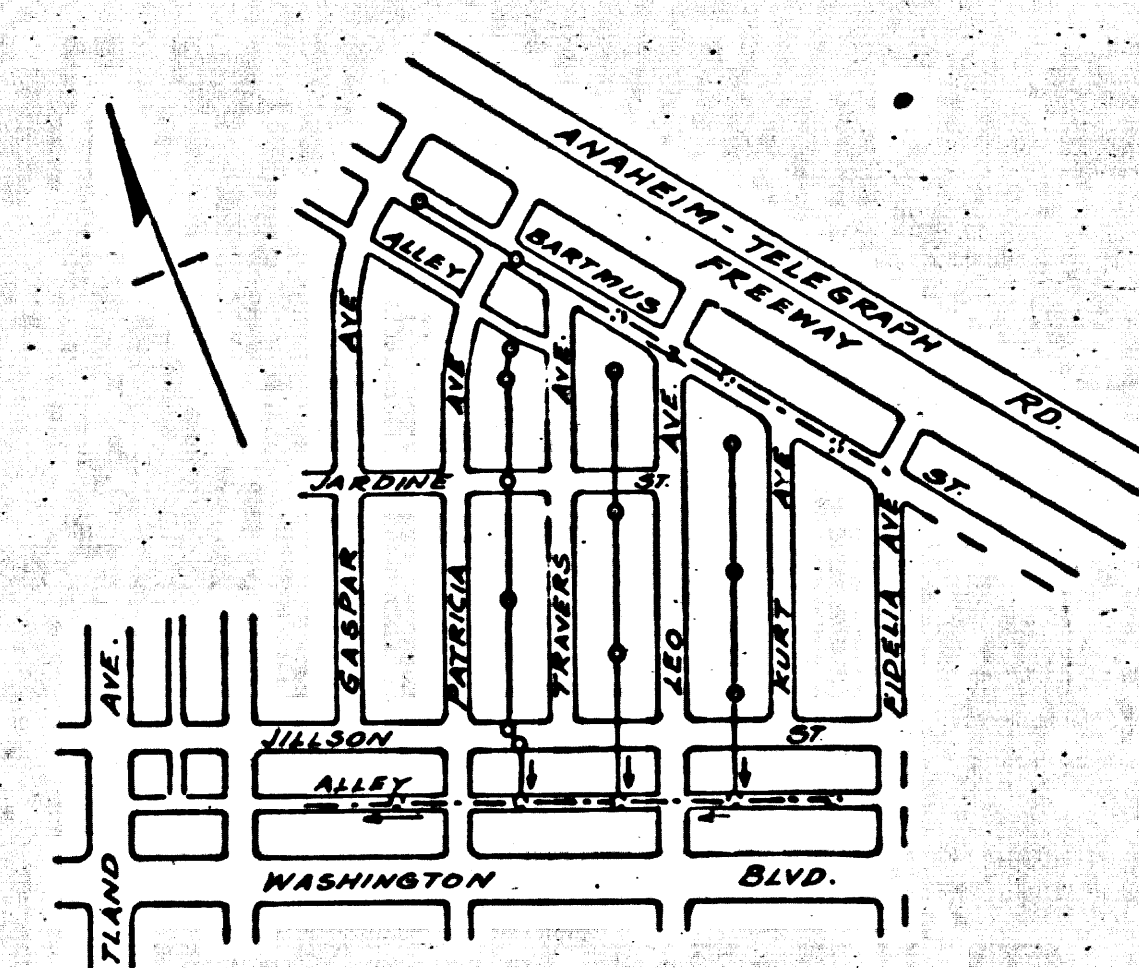
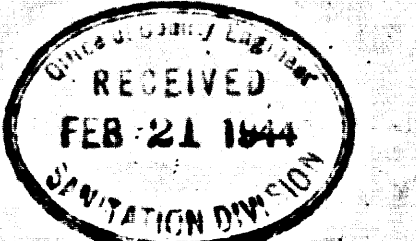
VERT. 1"=4'
 Scale: HORIZ. 1"=40'
 NOV. 1943.
PRIVATE CONTRACT NO. 240
 W.S. 36
 FIELD WORK BY: *Judith C. Stiller*
 REG. C.E. NO. 1670
 DESIGN BY: *George S. Blackmer*
 REG. C.E. NO. 1211

ONE SHEET
 FOR LEGEND
 SEE PLAN NO. S-4-64

NOTE:
 GRADES TO WHICH THIS IMPROVEMENT IS TO BE CONSTRUCTED ARE SHOWN ON PLAN AND PROFILE GRADE POINTS FOR TOP OF CURB, CENTER LINE OF STREET OR CENTER LINE OF ALLEY ARE SHOWN BY CIRCLES ON PROFILES AT ALL POINTS BETWEEN DESIGNATED POINTS THE GRADE SHALL BE ESTABLISHED SO AS TO CONFORM TO A STRAIGHT LINE DRAWN BETWEEN SAID DESIGNATED POINTS.
 ELEVATIONS ARE IN FEET ABOVE U.S. DATUM OR MEAN SEA LEVEL.
 THIS DRAWING AND THE DATA HEREON ARE HEREBY MADE A PART OF THE SPECIFICATIONS.
 WORK SHALL BE CONSTRUCTED ACCORDING TO SPECIFICATIONS ON FILE IN THE OFFICE OF THE COUNTY ENGINEER AND SHALL BE PROSECUTED ONLY IN THE PRESENCE OF THE COUNTY ENGINEER.
 BEFORE WORK CAN BE STARTED THE CONTRACTOR MUST OBTAIN A PERMIT TO EXCAVATE IN COUNTY STREETS FROM THE L.A. COUNTY ROAD DEPT., HIGH HALL OF RECORDS, AND MAKE A DEPOSIT WITH THE COUNTY ENGINEER, 700 UNION LEAGUE BUILDING, SUFFICIENT TO COVER THE COST OF CONSTRUCTION INSPECTION AND RECORD PLANS.

COUNTY OF LOS ANGELES, CALIFORNIA
 APPROVED: *Alfred Jones*
 COUNTY ENGINEER
 APPROVED: *George S. Blackmer*
 CHIEF ENGINEER OF COUNTY SANITATION DISTRICT NO. 2

CHECKED BY: *W. Sedman* 12-14-1943
 OFFICE OF COUNTY ENGINEER REG. C.E. NO. 6229

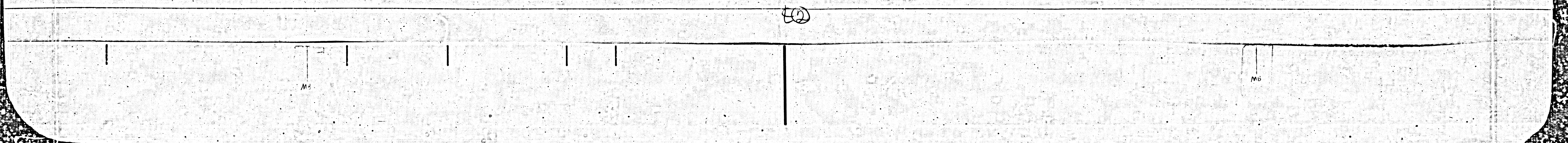
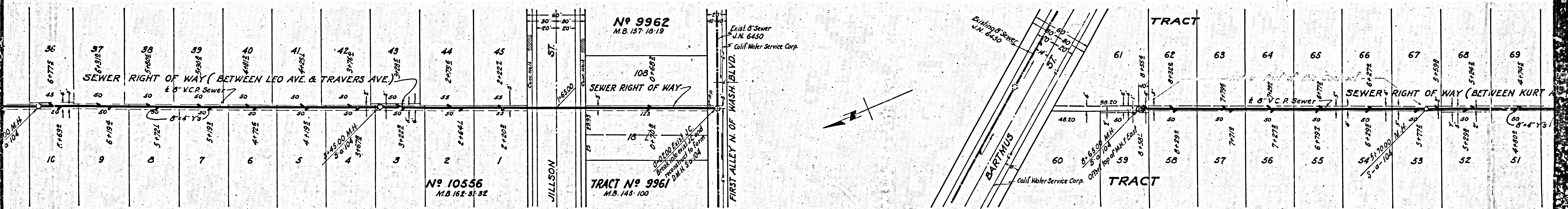
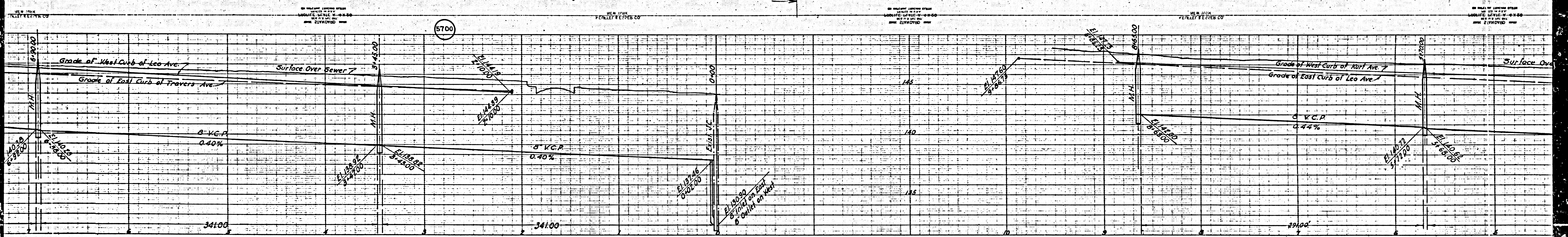


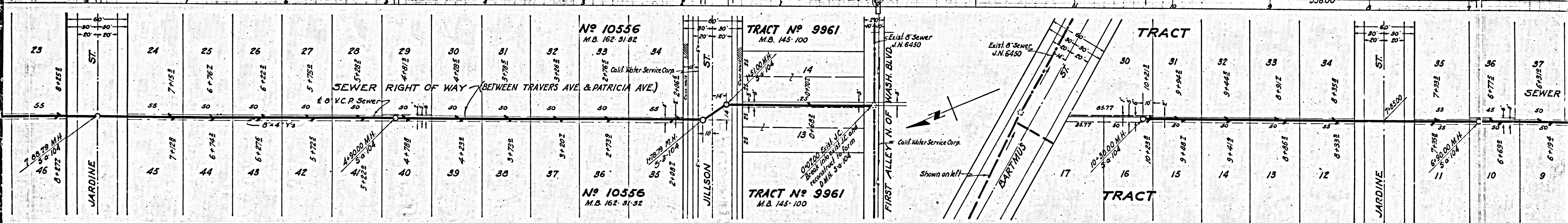
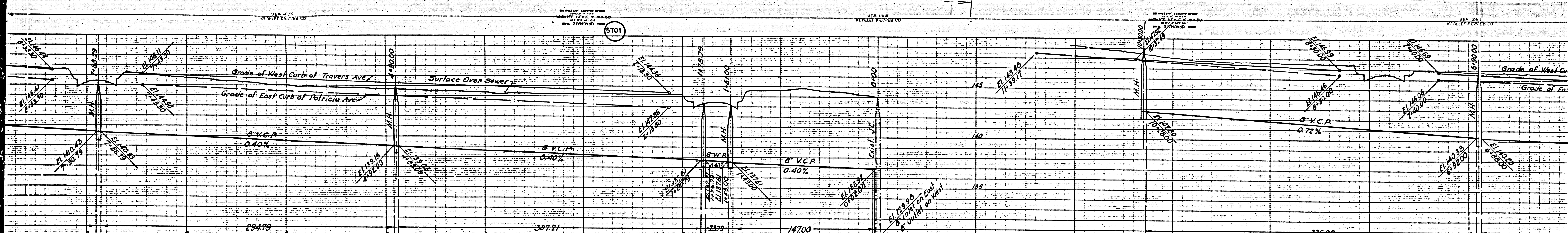
DC 540

40

Compared TRP 8/1/44

Trim Line





(5701)

(43)

M5

M5

