

1. Use "Just Right" Manhole Frames and Covers in streets.
2. Use Special Manhole Frames and Covers in rights of ways (S-a-109).
3. Use Standard Strength Pipe, except as noted.
4. Use Cement Mortar for all vitrified clay pipe joints.
5. Resurface all trench within paved area to meet Los Angeles County Road Dept. requirements.
6. Manhole tops in Sewer Rights of Way to be 6" above finished surface of ground.

PROFILE, ALIGNMENT AND GRADE OF
SANITARY SEWERS
 TO BE CONSTRUCTED IN
LEMOLI AVENUE
 AND IN
157TH STREET
 AND
 SANITARY SEWER RIGHTS OF WAY
 IN
 TRACT NO. 12340
 PRIVATE CONTRACT NO. 242
 W.S. 25
SHEET 1 OF 3 SHEETS
 NOV. 1944
 PREPARED IN THE OFFICES OF
JONES & GILBERT

BY: *Paul Jones*
 Registered Civil Engineer No. 2311

BY: _____
 Registered Civil Engineer No. 1797

FOR LEGEND
 SEE PLAN NO. 5-B-64

NOTE:
 Grades to which this improvement is to be constructed are shown on plans and profile. Grade points for top of curb are shown by circles on profile. At all points between designated points the grades shall be established so as to conform to a straight line drawn between said designated points.
 Elevations are in feet above U.S.C. datum or mean sea level.
 This drawing and the data hereon are hereby made a part of the specifications.
 Work shall be constructed according to specifications on file in the office of the County Engineer and shall be prosecuted only in the presence of the County Engineer.
 Before work can be started, the Contractor must obtain a permit to excavate in county streets from L.A. County Road Dept., 1104 Hall of Records, and make a deposit with the County Engineer, 700 Union League Building, sufficient to cover the cost of construction inspection on record plans.

COUNTY OF LOS ANGELES, CALIFORNIA

APPROVED *Paul Jones*
 COUNTY ENGINEER

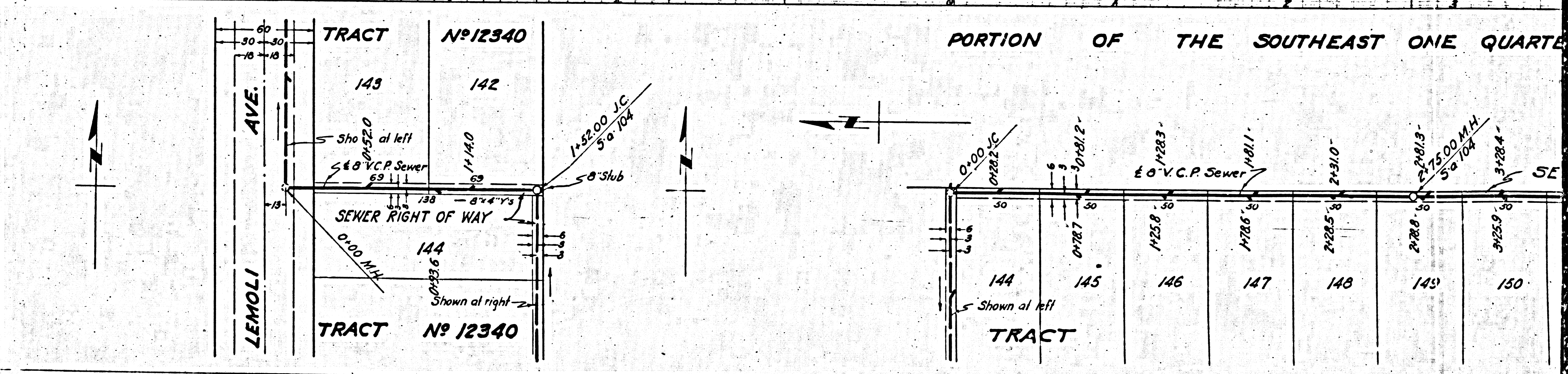
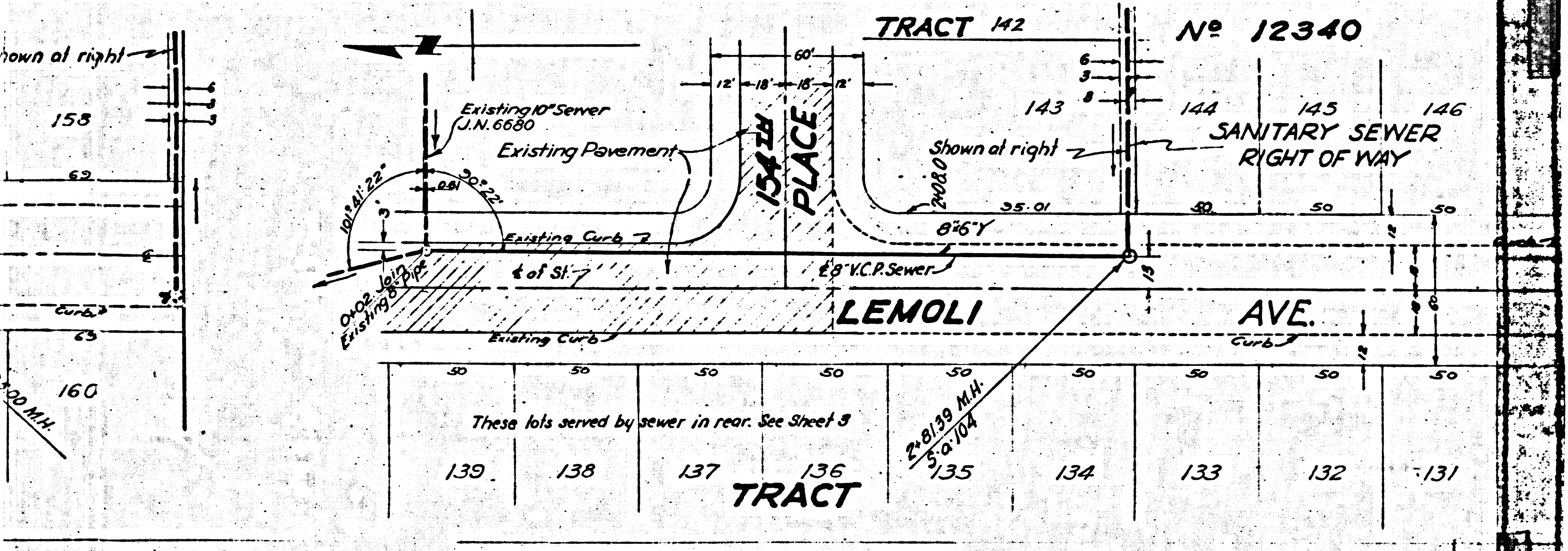
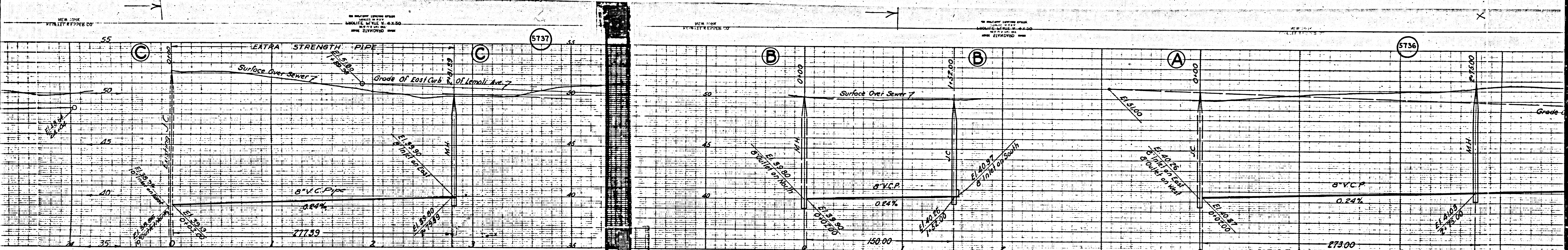
APPROVED *Chick*
 CHIEF DIVISION OF COUNTY SANITATION DISTRICT 1125

RECEIVED
 JAN 5 1944
 SANITATION DIVISION

Revisions Checked By *W. Hudson* 6-1-1944

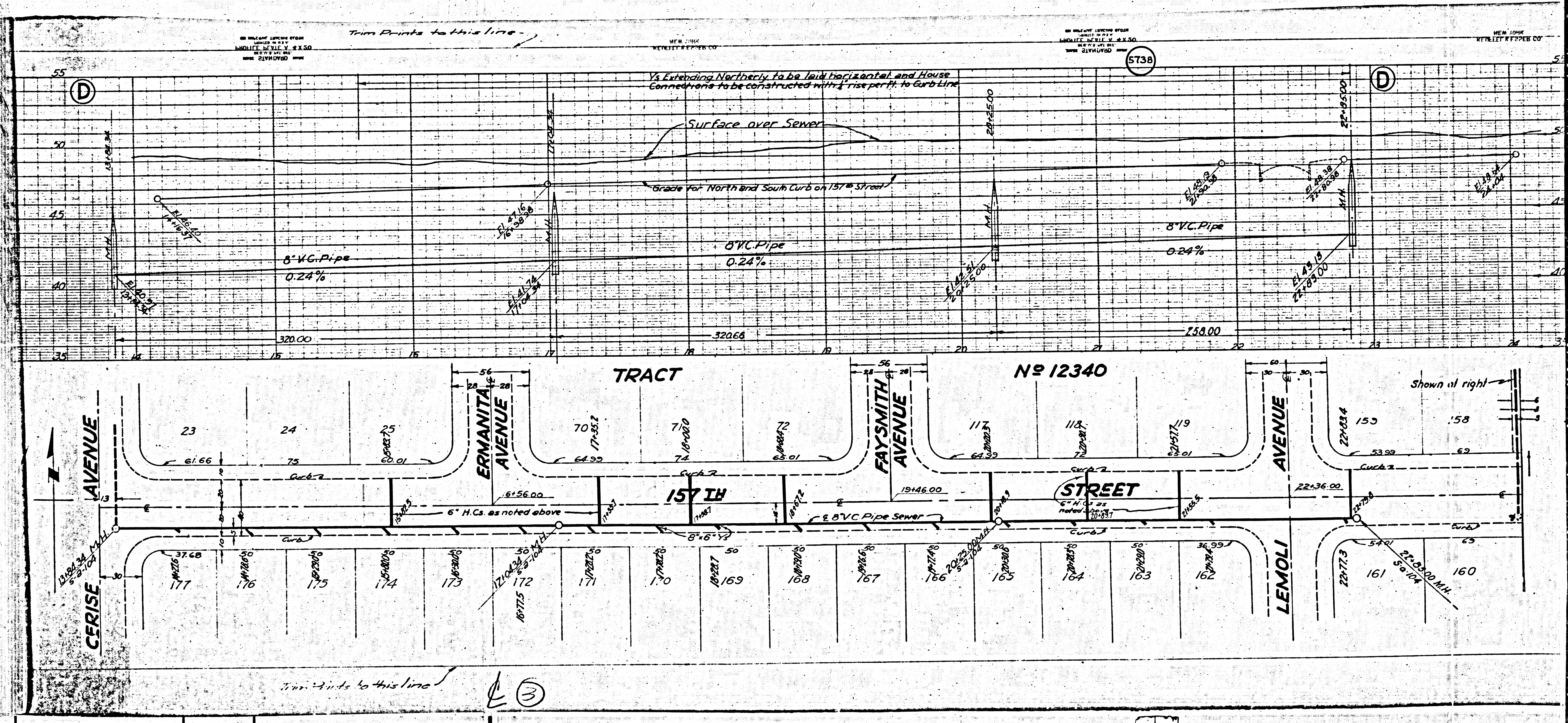
CHECKED BY *M. G. ...* 5-1-1944
 OFFICE OF COUNTY ENGINEER REC. C.E.P.1013

Trim Prints to this line.
 Final CE 10/10/44 T.P.



M3

M6



Turn Points to this line

5736

1/2 Extending Northerly to be laid horizontal and House Connections to be constructed with 1/2 rise per ft. to Coro Line

Surface over Sewer

Grade for North and South Curb on 157th Street

8" V.C. Pipe
0.24%

8" V.C. Pipe
0.24%

8" V.C. Pipe
0.24%

TRACT

No 12340

Shown at right

157 TH STREET

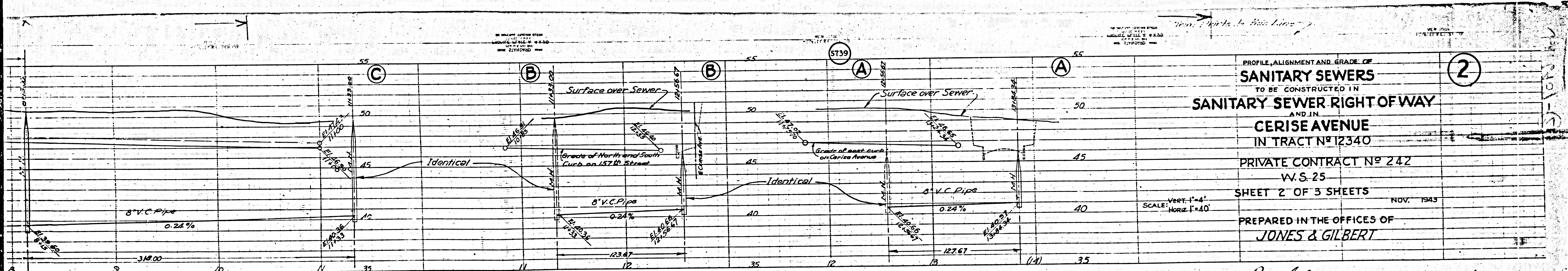
STREET

Turn Points to this line

5736

M5

M5

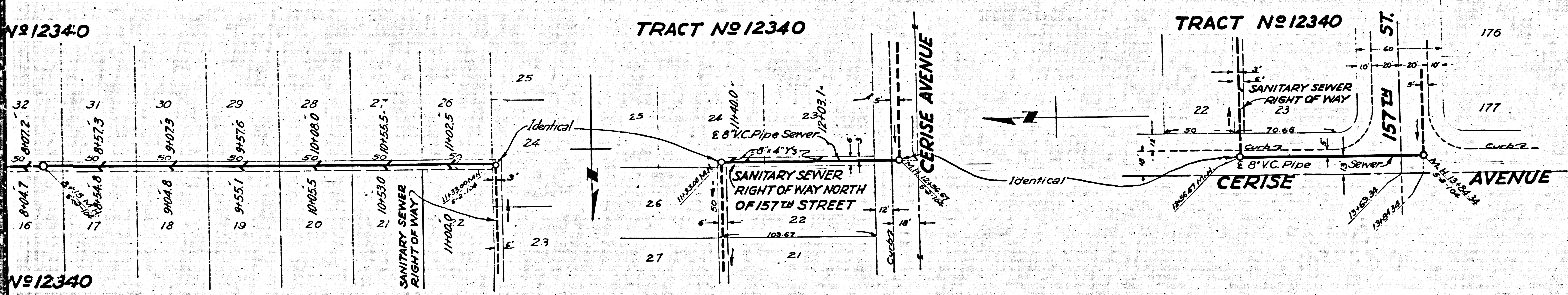


PROFILE, ALIGNMENT AND GRADE OF
SANITARY SEWERS
 TO BE CONSTRUCTED IN
SANITARY SEWER RIGHT OF WAY
 AND IN
CERISE AVENUE
 IN TRACT NO 12340

PRIVATE CONTRACT NO 242
 W.S. 25
 SHEET 2 OF 3 SHEETS
 NOV. 1943

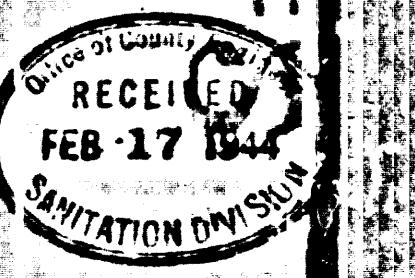
PREPARED IN THE OFFICES OF
JONES & GILBERT

SCALE: VERT. 1"=4'
 HORIZ. 1"=40'



BY: *Paul Jones*
 Registered Civil Engineer No. 2311
 Registered Civil Engineer No. 1797
 FOR LEGEND SEE PLANS 5-9-64
 FOR CONSTRUCTION NOTES SEE SHEET 1
 COUNTY OF LOS ANGELES, CALIFORNIA.

APPROVED *Alfred Jones*
 COUNTY ENGINEER
 APPROVED *Paul Jones*
 CHIEF ENGINEER OF COUNTY
 SANITATION DISTRICT NO. 8



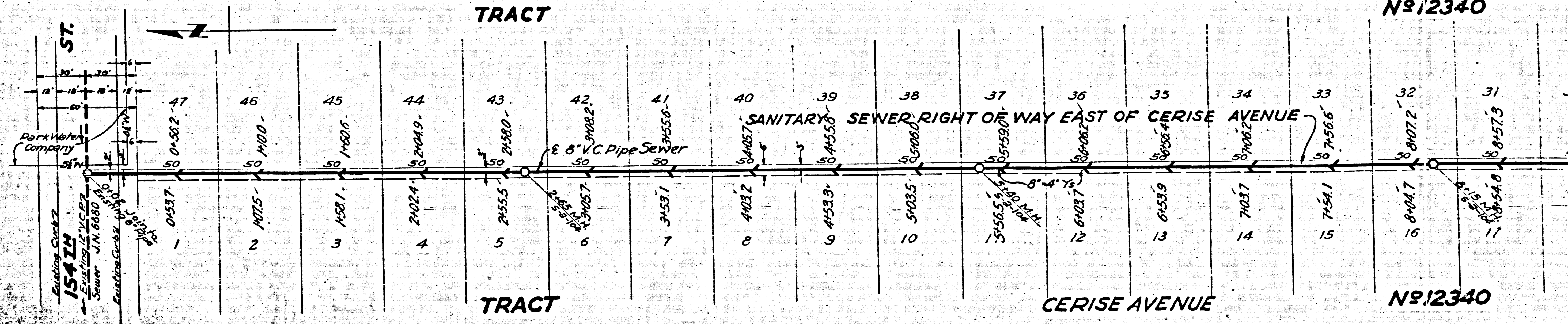
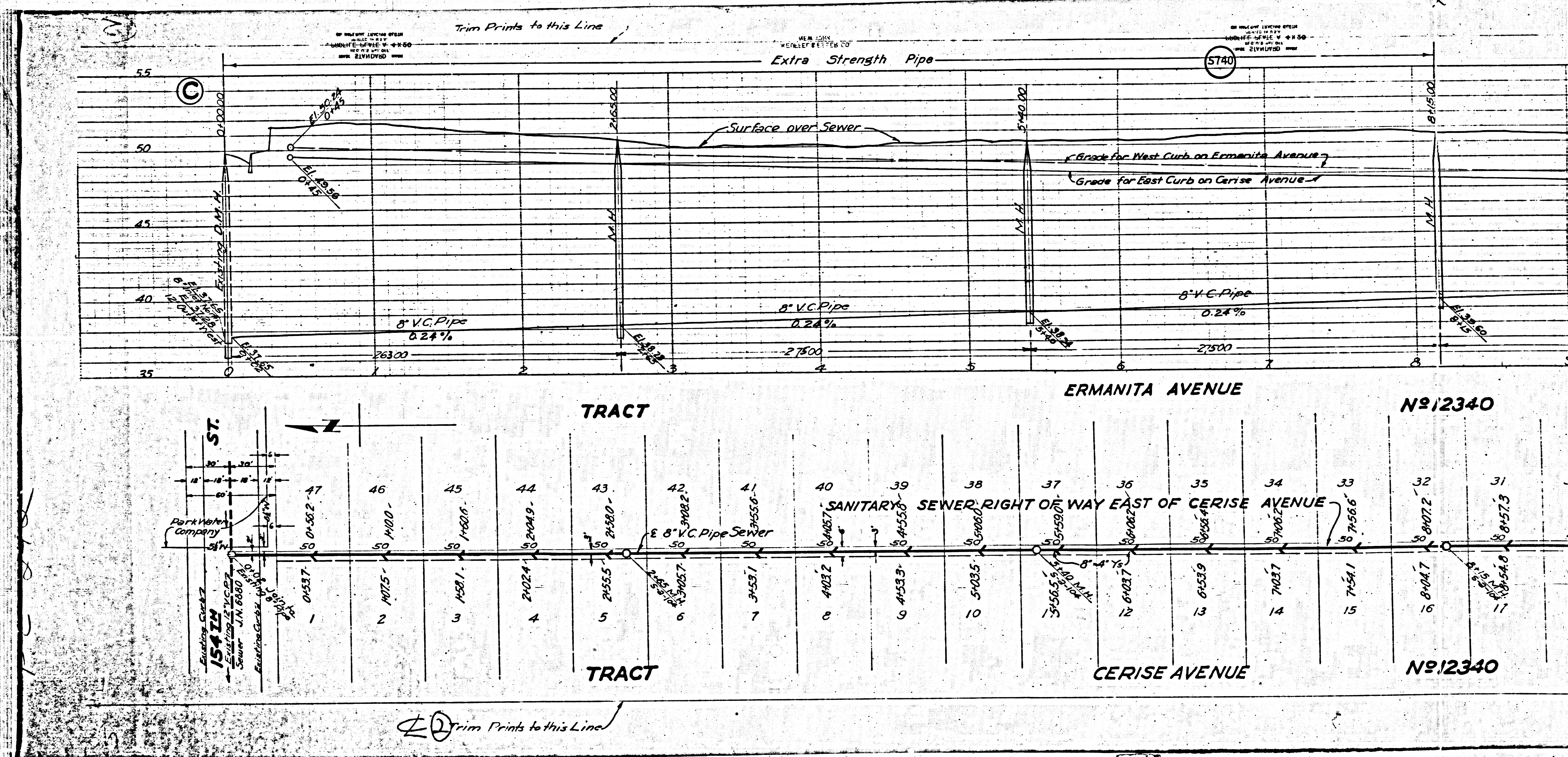
CHECKED BY *W. J. ...* 2-4-1943
 OFFICE OF COUNTY ENGINEER, LOS ANGELES, CALIF.

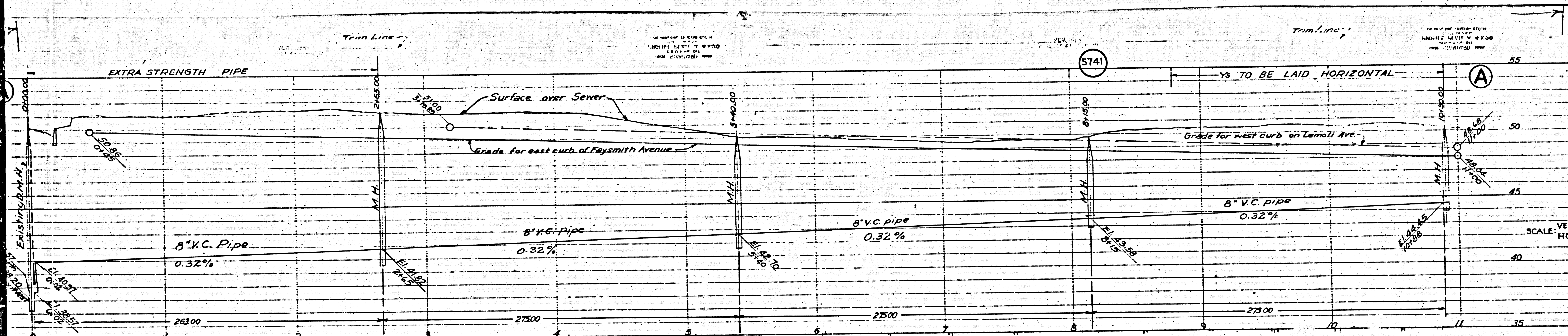
BC 54

①

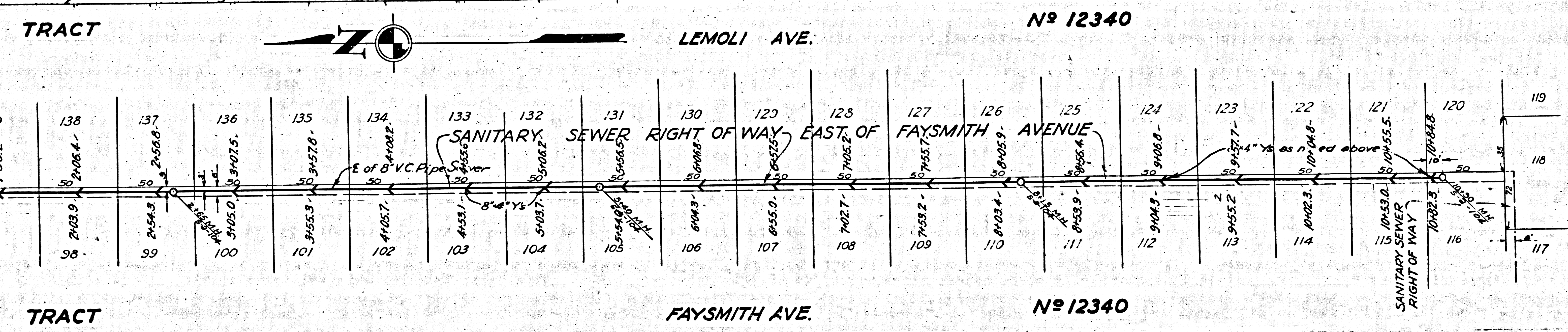
Trim Prints to this line

Final CE 10/14/43





3
 PROFILE, ALIGNMENT AND GRADE OF
SANITARY SEWER
 TO BE CONSTRUCTED IN
SANITARY SEWER RIGHT OF WAY
 IN TRACT N^o 12340
 PRIVATE CONTRACT N^o 242
 W.S. 25
SHEET 3 OF 3 SHEETS
 NOV. 1943
 PREPARED IN THE OFFICES OF
JONES & GILBERT

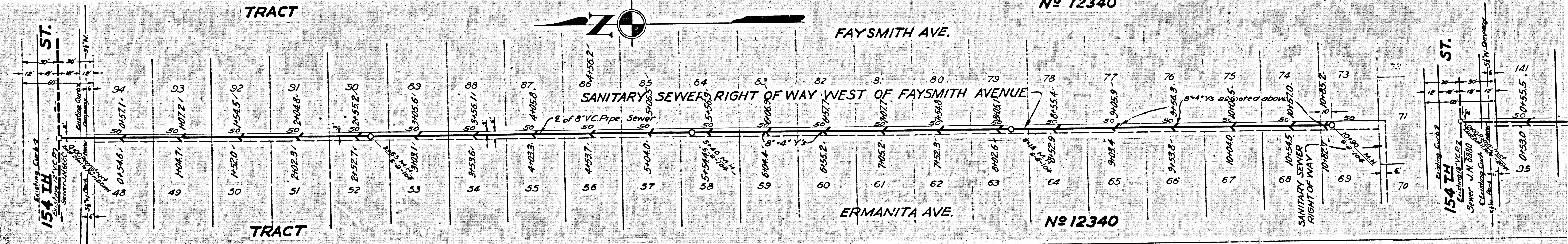
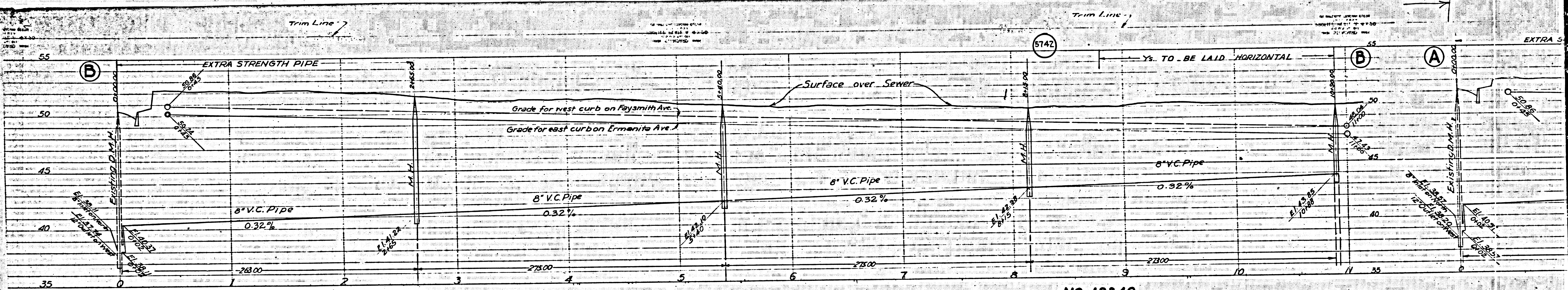


BY: *Paul Jones*
 Registered Civil Engineer No. 2311
 Registered Civil Engineer No. 1797
 FOR LEGEND SEE PLAN N^o 5-9-64
 FOR CONSTRUCTION NOTES SEE SHEET 1
 COUNTY OF LOS ANGELES, CALIFORNIA.

APPROVED *Alfred Jones*
 COUNTY ENGINEER
 APPROVED *Cecil Egan*
 CHIEF ENGINEER OF COUNTY
 SANITATION DISTRICT NO. 9

CHECKED BY *H. Sullivan* 7-4-1943
 OFFICE OF COUNTY ENGINEER, S.B.C.E. NO. 5213

Final CE 10/14/43



②