

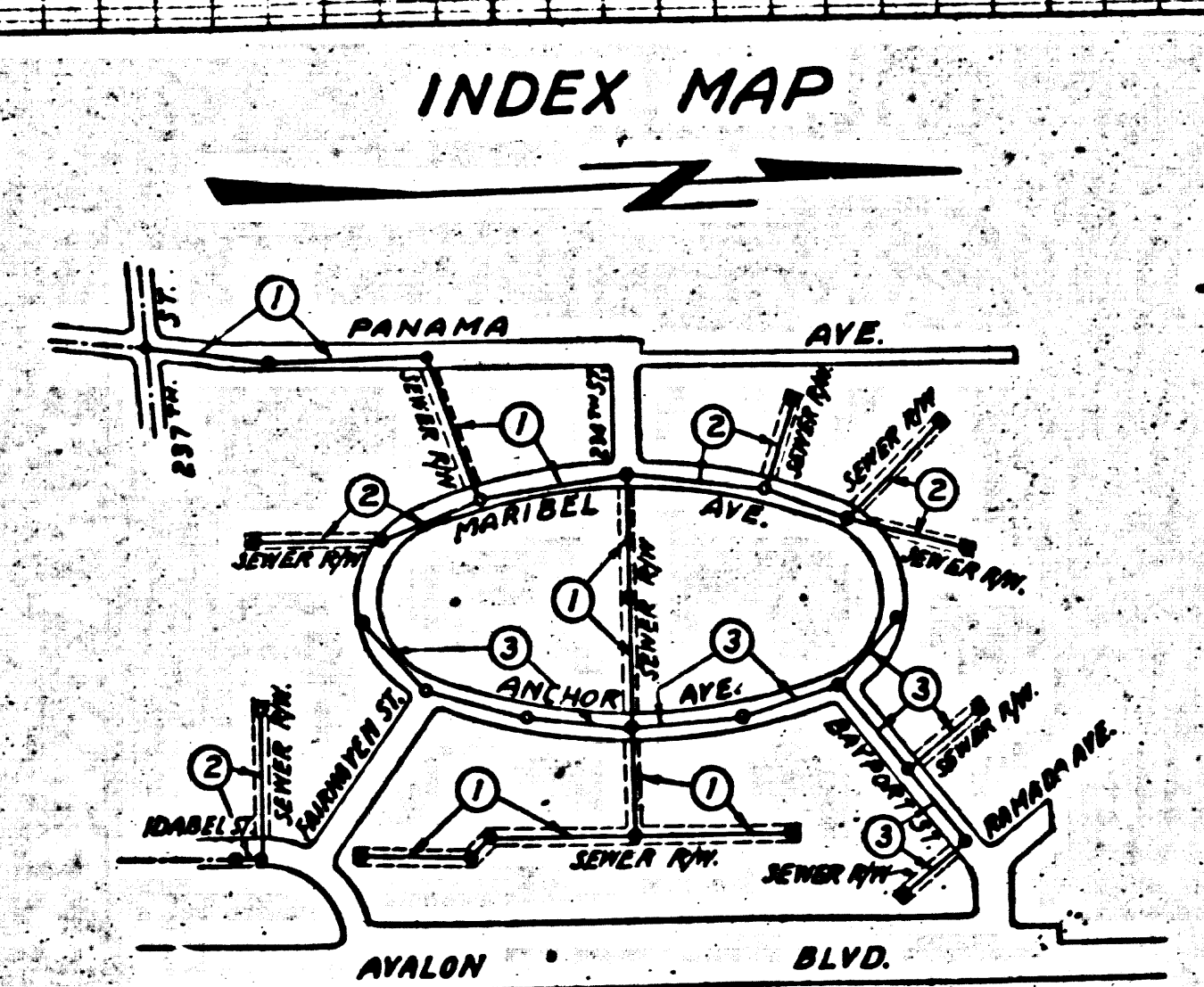
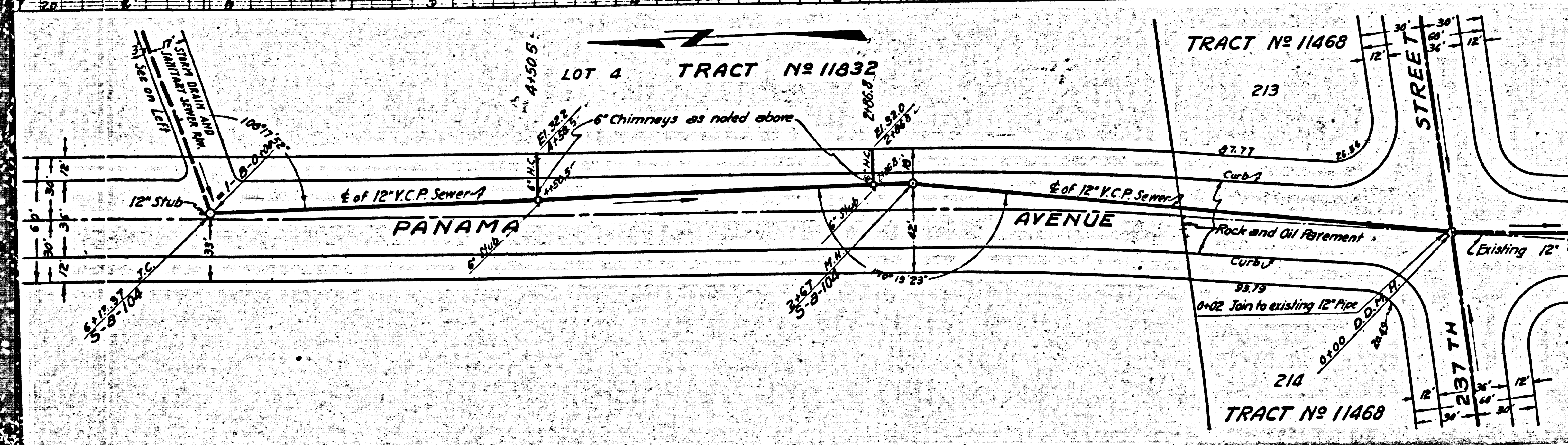
- B.M. 5776 Elev. 39.82
 SPK. at Intersection of
 AVALON BLVD. & 23RD ST.
- (1) USE "JUST-RITE" MANHOLE FRAMES AND COVERS.
 - (2) USE STANDARD STRENGTH PIPE (EXCEPT AS NOTED).
 - (3) USE CEMENT MORTAR FOR ALL VITRIFIED CLAY PIPE JOINTS.
 - (4) RESURFACE ALL TRENCH WITHIN PAVED AREA TO MEET LOS ANGELES COUNTY ROAD DEPT. REQUIREMENTS.
 - (5) ENCASE 4 FT. OF SEWER AT POINTS OF INTERFERENCE WITH POLES AS PER S-6-6.
 - (6) CONSTRUCT HOUSE CONNECTIONS IN STREETS WITH INVERT AT PROPERTY LINE 6 FT. BELOW CURB GRADE, EXCEPT AS NOTED.

PROFILE ALIGNMENT AND GRADE OF
SANITARY SEWERS
 TO BE CONSTRUCTED IN
PANAMA AVE.
 BETWEEN 23RD ST. AND 234TH ST.
MARIBEL AVE.
 BETWEEN ANCHOR AVE. AND 234TH ST.
SANITARY SEWER RIGHTS OF WAY
 IN LOTS 2, 3 AND 4, TRACT NO. 11468

PRIVATE CONTRACT NO. 247
 W.S. 20
 SHEET 1 OF 3 SHEETS

SCALE: HORIZ. 1" = 40'
 VERT. 1" = 4'

PREPARED IN THE OFFICES OF



HAROLD M. TEGART
 BY: *Harold M. Tegart*
 REG. NO. 2151

FOR LEGEND
 REG. PLAN NO. 5-3-64

RECEIVED
 MAY 20 1944
 SANITATION DIVISION

NOTE:
 THIS DRAWING AND THE DATA HEREON ARE HEREBY MADE A PART OF THE SPECIFICATIONS.
 WORK SHALL BE CONSTRUCTED ACCORDING TO SPECIFICATIONS ON FILE IN THE OFFICE OF THE COUNTY ENGINEER.
 AND SHALL BE PROSECUTED ONLY IN THE PRESENCE OF THE COUNTY ENGINEER.
 SHOULD WORK BE STOPPED, THE CONTRACTOR MUST OBTAIN A PERMIT TO EXCAVATE IN COUNTY STREETS
 FROM THE LOS ANGELES COUNTY ROAD DEPT. AND MAINT. A DEPOSIT WITH THE COUNTY
 ENGINEER, TWO UNION LEAGUE BUILDING, SUFFICIENT TO COVER THE COST OF CONSTRUCTION INSPECTOR'S AND
 RECORD PLANS.

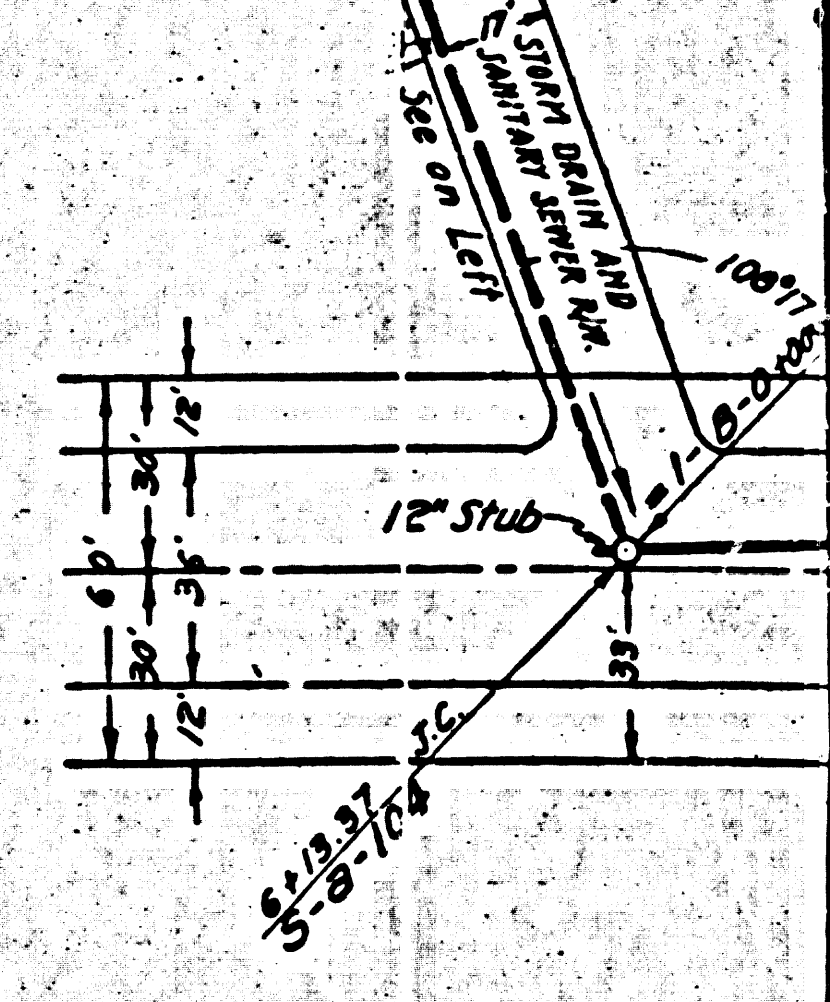
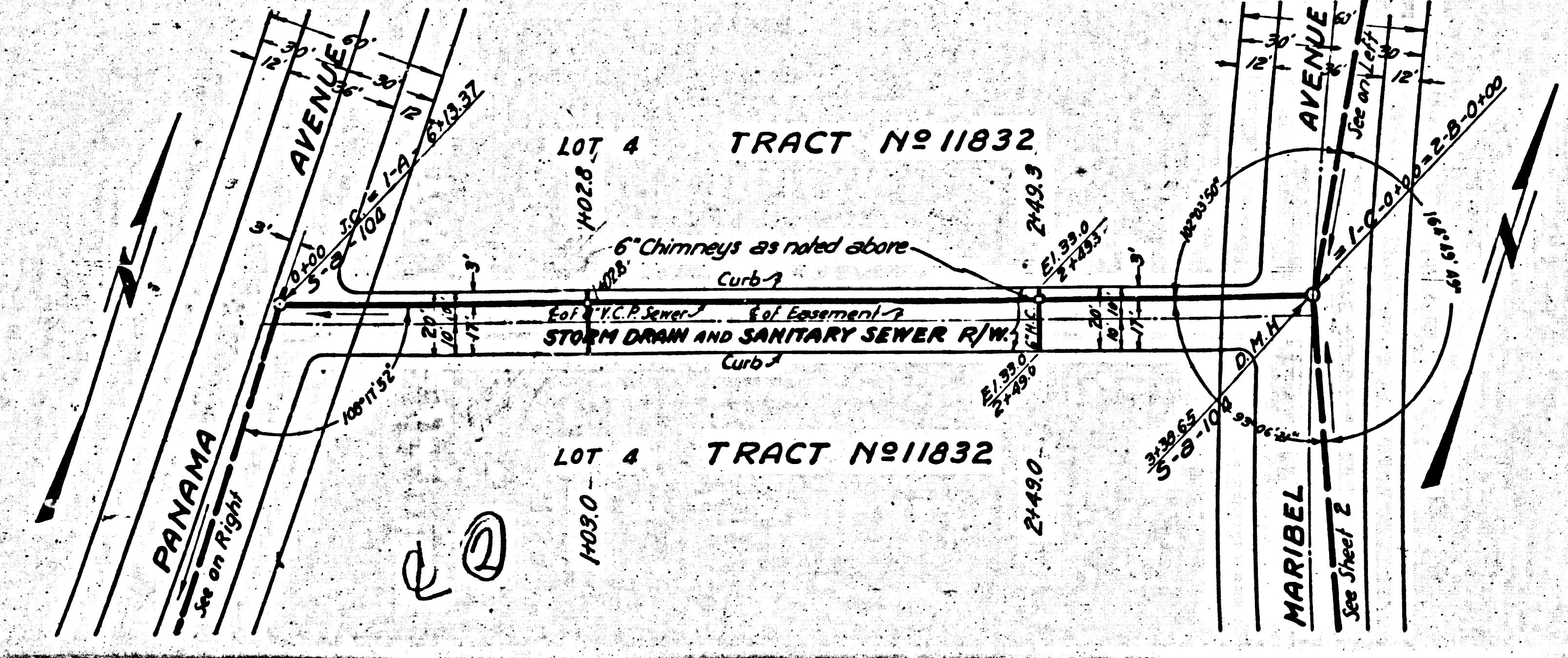
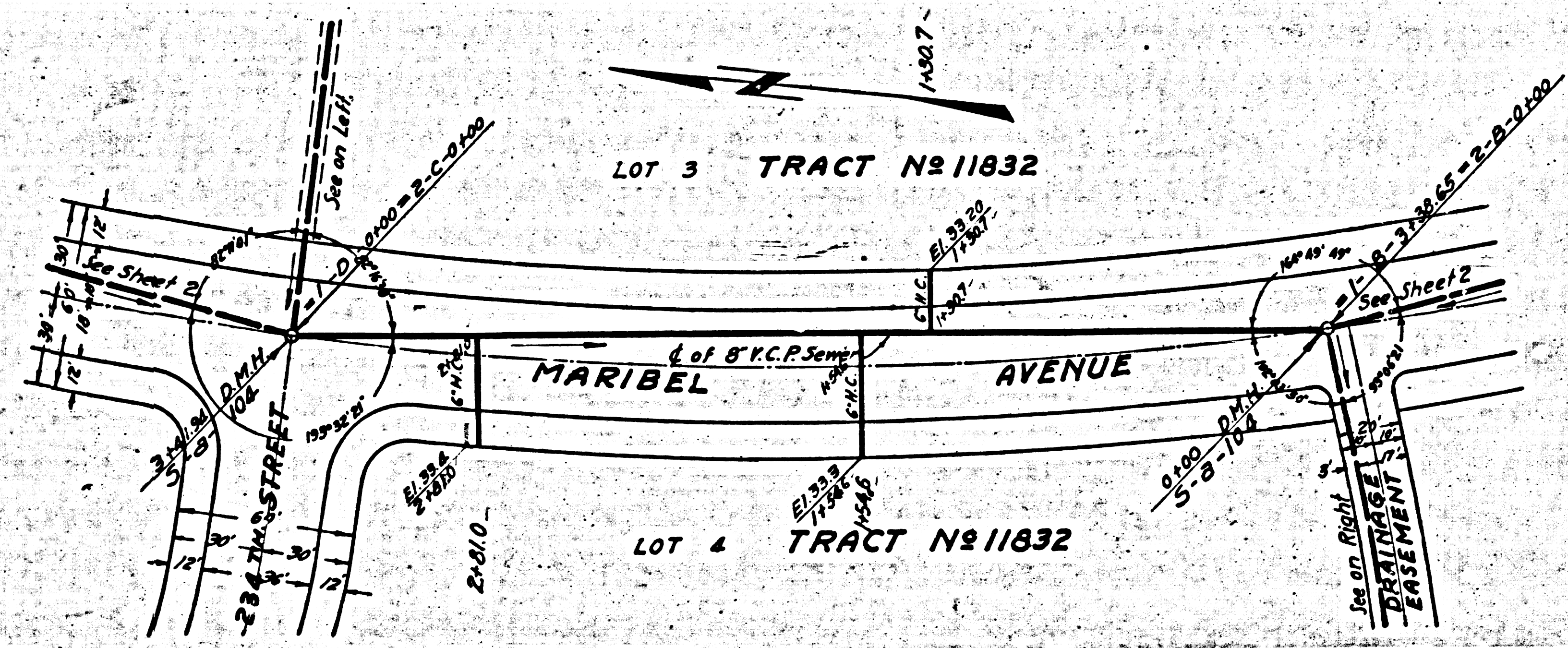
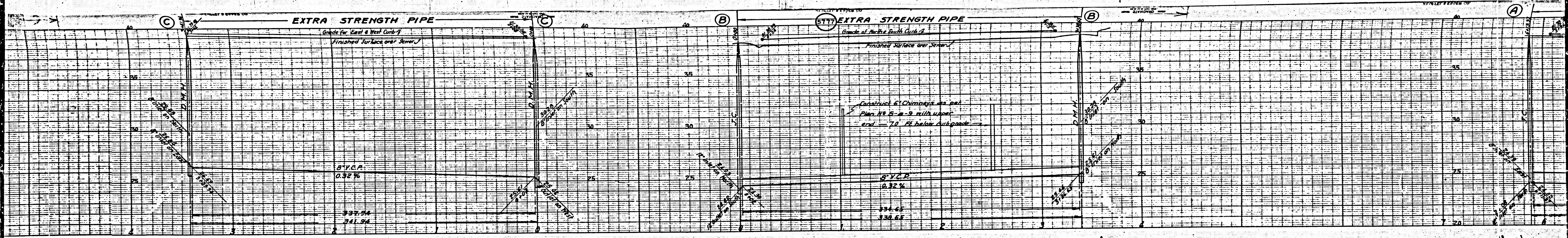
COUNTY OF LOS ANGELES, CALIFORNIA.

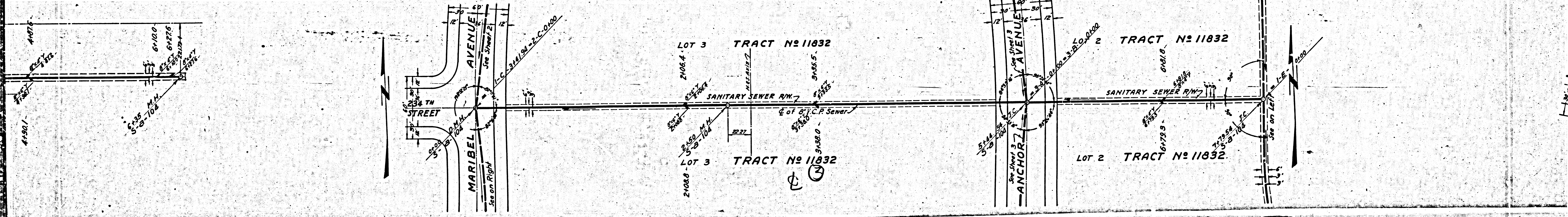
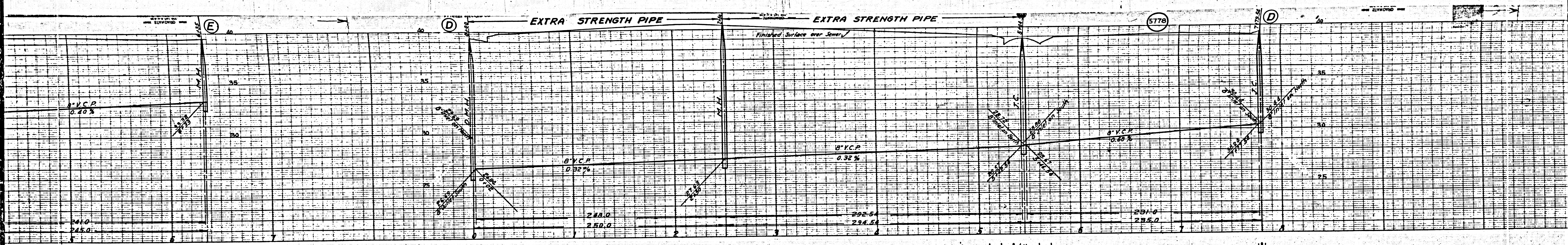
APPROVED *Alfred J. ...*
 COUNTY ENGINEER

APPROVED *C. J. ...*
 ACTING CHIEF ENGINEER OF COUNTY
 SANITATION DISTRICT NO. 6

CHECKED BY: *Y. ...* 5-5-64
 OFFICE OF COUNTY ENGINEER, 1200 C.E. BLDG.

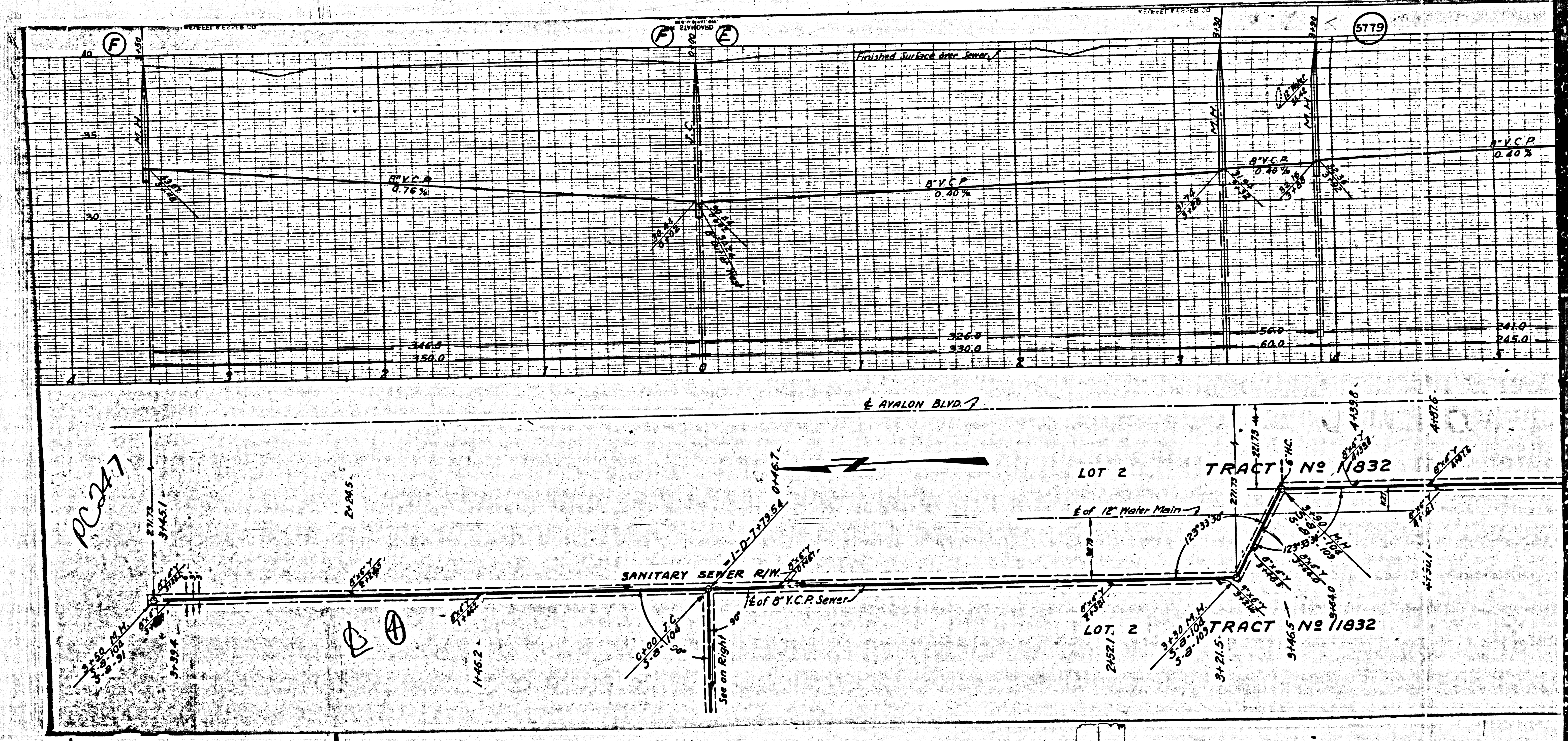
Final C&T.P. 10/1/44





M3

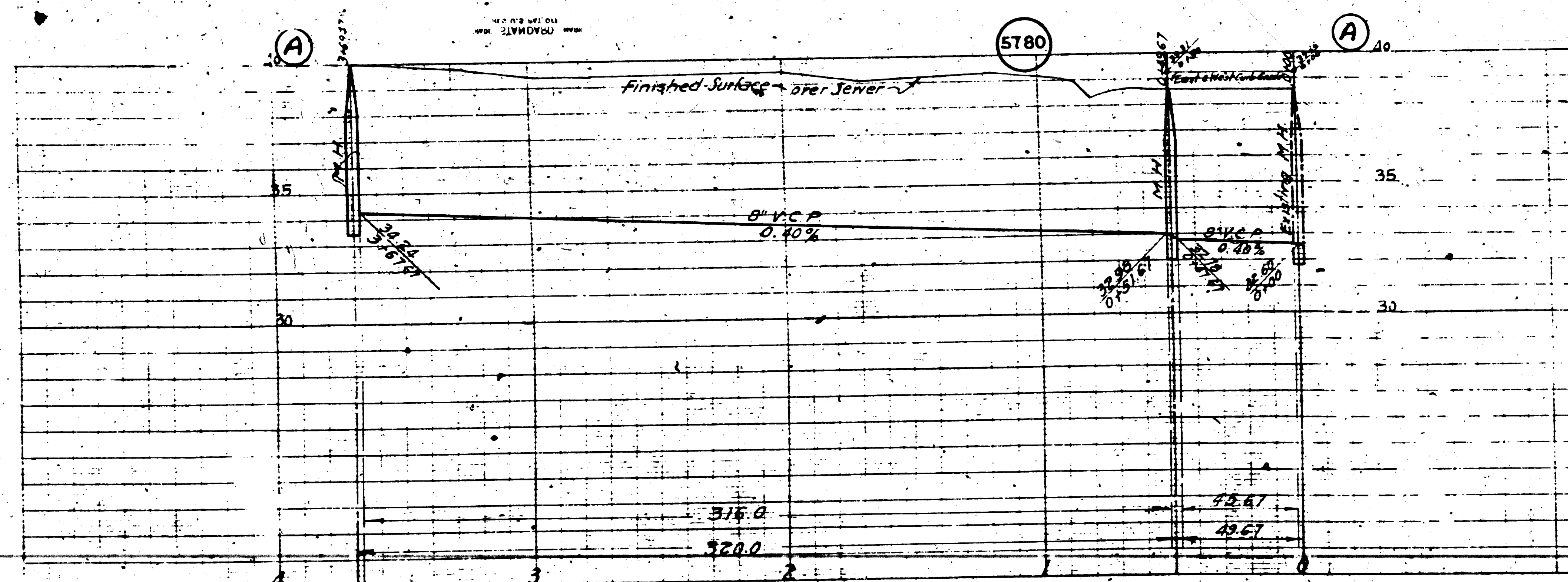
M6



M3

M3

6



PROFILE
 SANITARY SEWER
 TO BE Laid
 IDENTIFIED
 BETWEEN
 MAIN
 BETWEEN
 SANITARY SEWER
 IN LOTS 4

PRIVATE

SHEET

SCALE: VERT. 1" = 40'

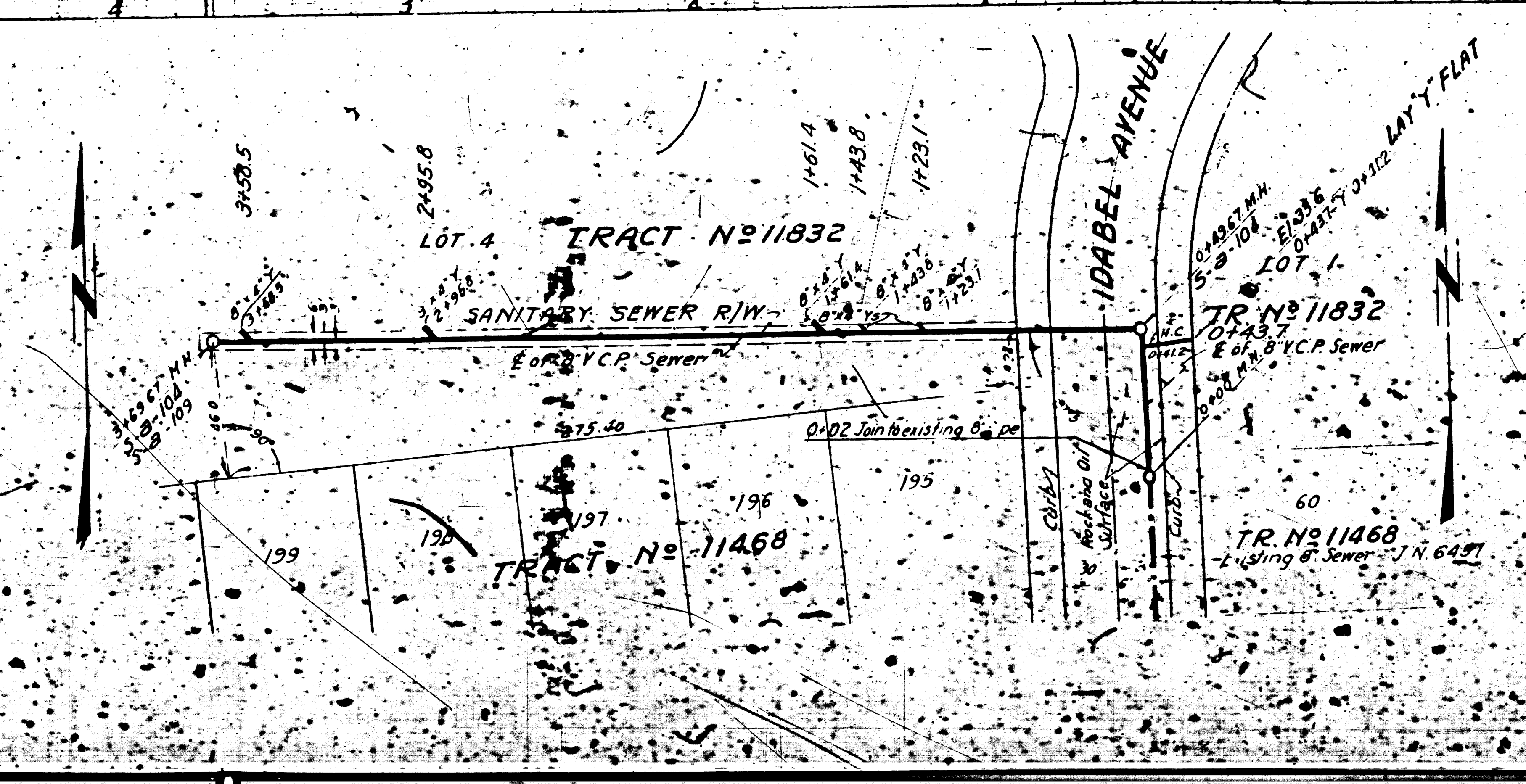
PREPARED BY: *HC*

H.A.

BY: *HC*

FOR CONSTRUCTION

COUNTY OF



TRACT No 11832

LOT 4

SANITARY SEWER R/W

8" VCP Sewer

975.40

0.022 Joint existing 6" dia

TRACT No 11468

TRACT No 11832

LOT 1

8" VCP Sewer

60

TRACT No 11468

Using 8" Sewer 11649

IDABEL AVENUE

LOT 1

318.0
324.0

35.61
49.61

5780

(A)

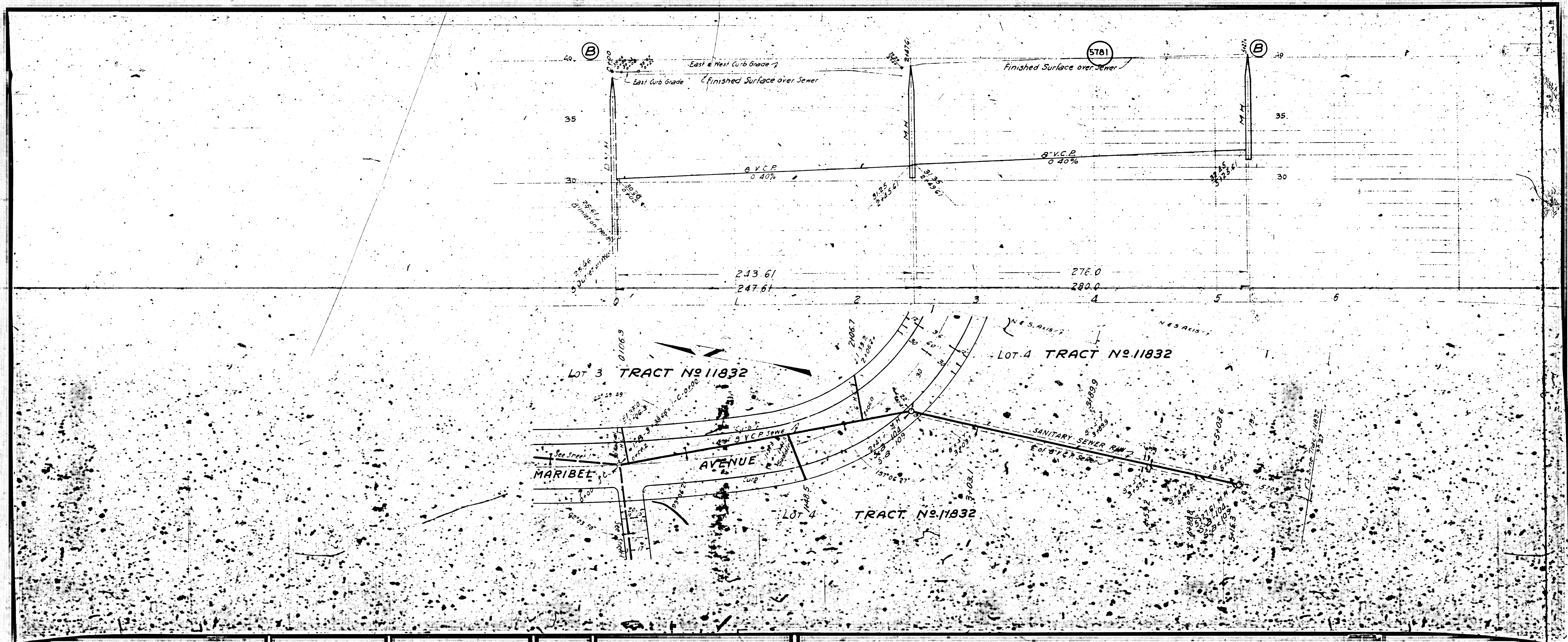
(A)

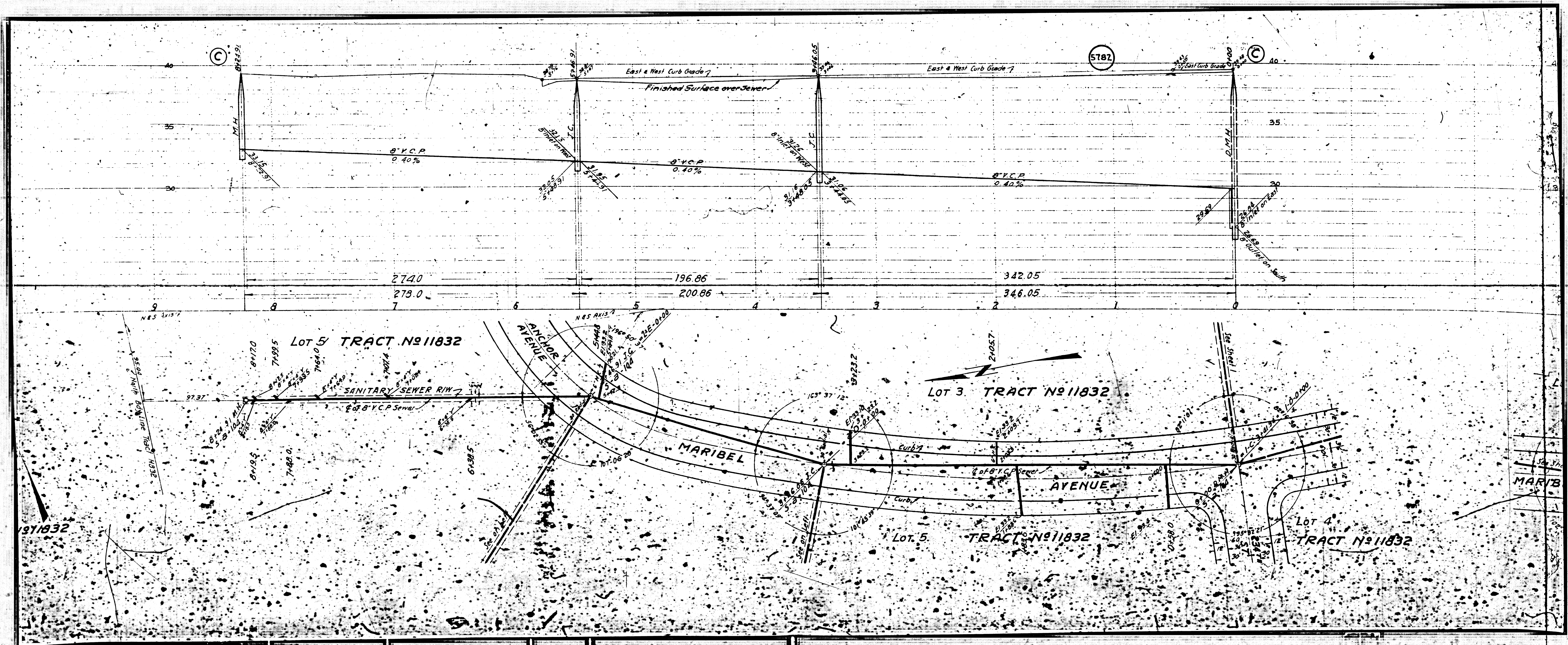
Finished Junction to Sewer

8" VCP
0.40%

35

30



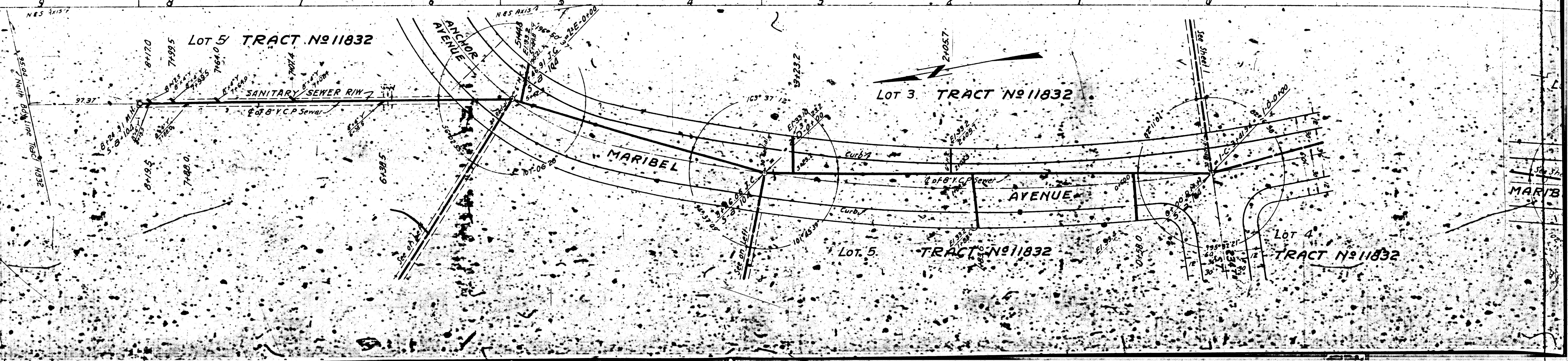


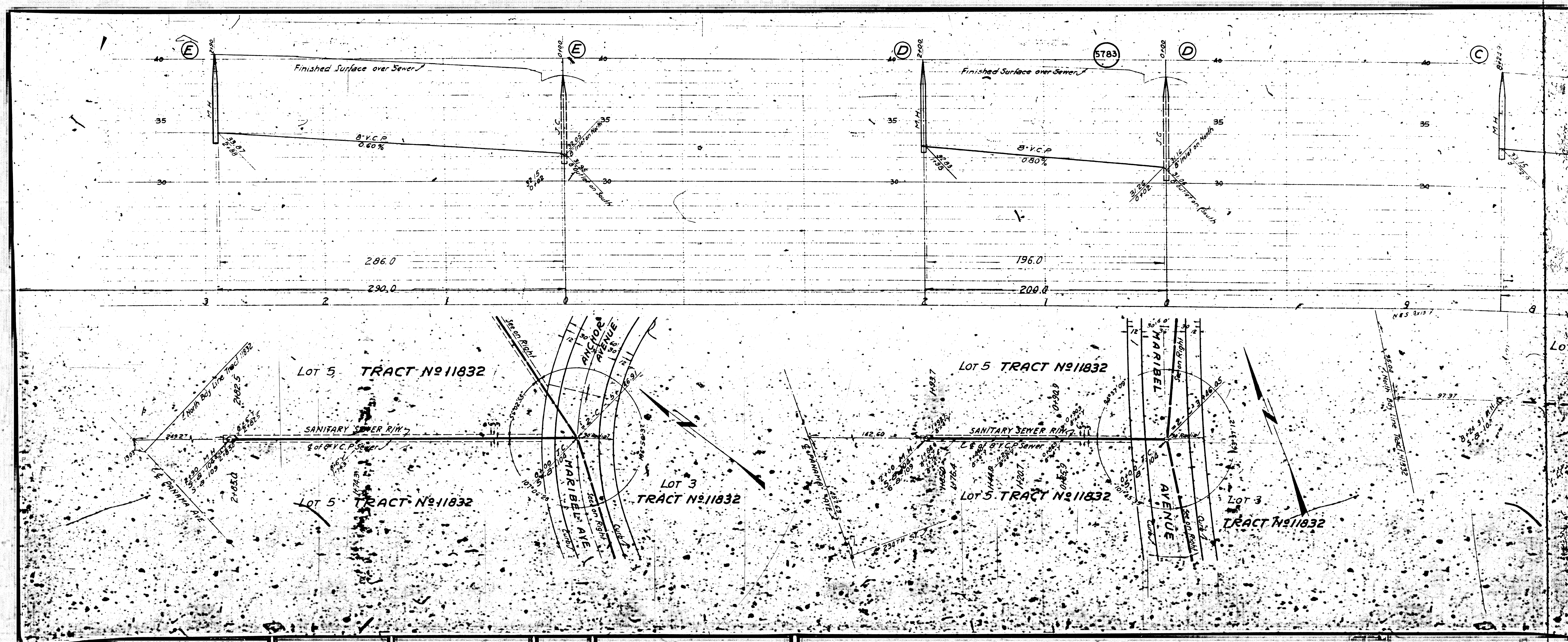
Lot 5 TRACT No 11832

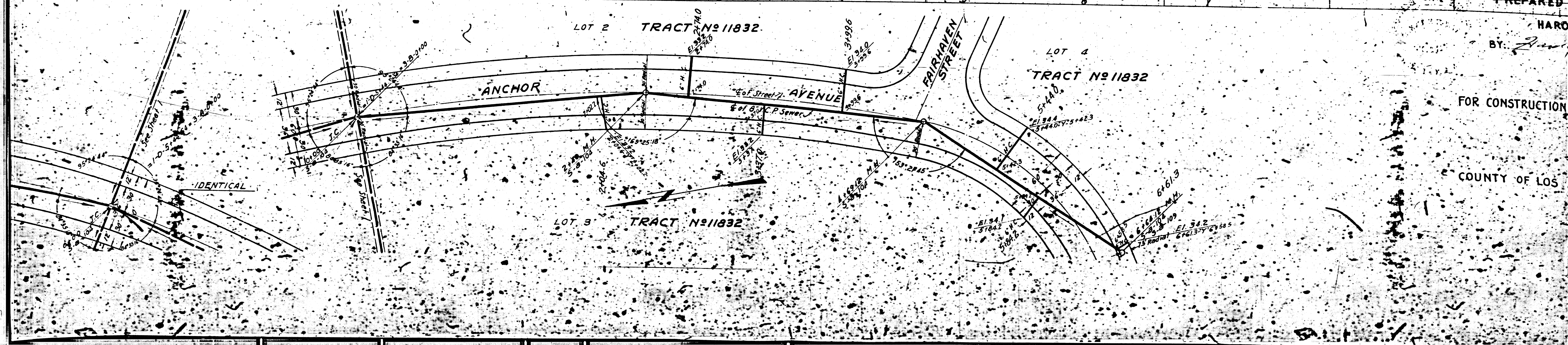
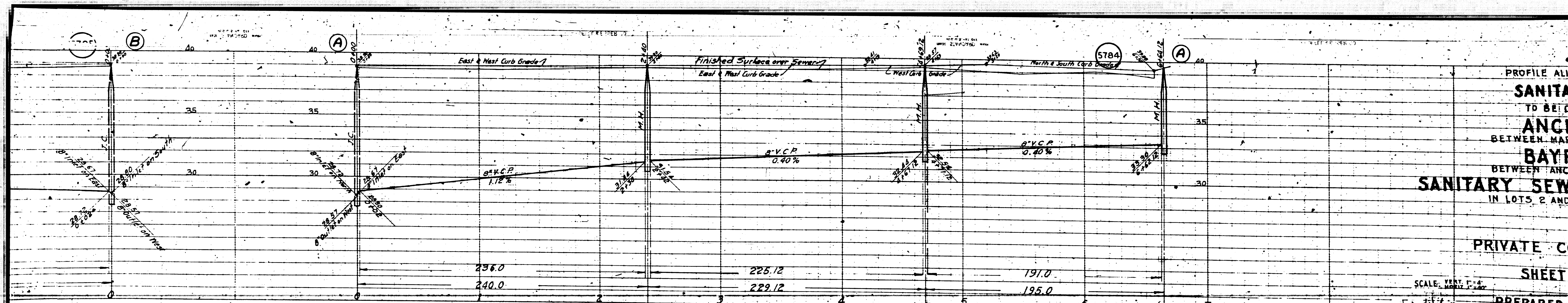
LOT 3 TRACT No 11832

Lot 5 TRACT No 11832

Lot 4 TRACT No 11832







PROFILE ALIGNED
 SANITARY SEWER
 TO BE CONSTRUCTED
 BETWEEN MARSHALL
 ANCHOR AVENUE
 BAYVIEW AVENUE
 BETWEEN ANCHOR
 AVENUE AND
 SANITARY SEWER
 IN LOTS 2 AND 3

PRIVATE COMPANY
 SHEET

SCALE: VERT. 1" = 10'

PREPARED BY: J. W. [Signature]

FOR CONSTRUCTION
 COUNTY OF LOS ANGELES

