

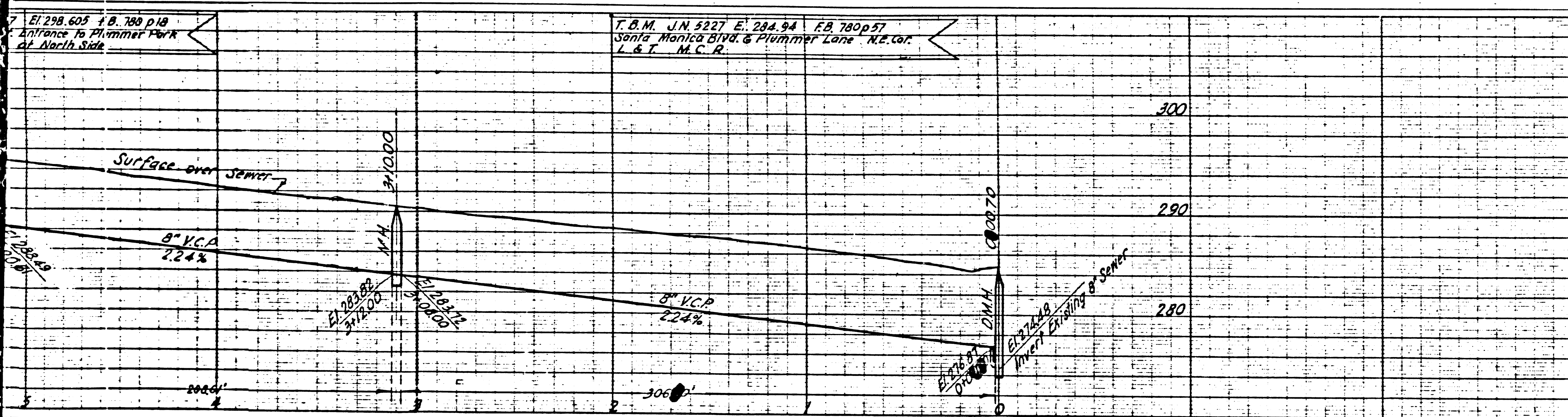
NEW YORK
WENLEFF & EPPEN CO.

NEW YORK
WENLEFF & EPPEN CO.

NEW YORK
WENLEFF & EPPEN CO.

NEW YORK
WENLEFF & EPPEN CO.

NEW YORK
WENLEFF & EPPEN CO.



DOUBLE SCALE

USE STANDARD STRENGTH PIPE
RESURFACE TRENCH WITHIN PAVED AREA WITH ASPHALTIC CONCRETE
3" IN THICKNESS EXCEPT AS NOTED
ENCASE FOUR FEET OF SEWER AT POINTS OF INTERFERENCE WITH
POLES AS PER 5-4-5
USE CEMENT MORTAR FOR ALL V. C. P. JOINTS

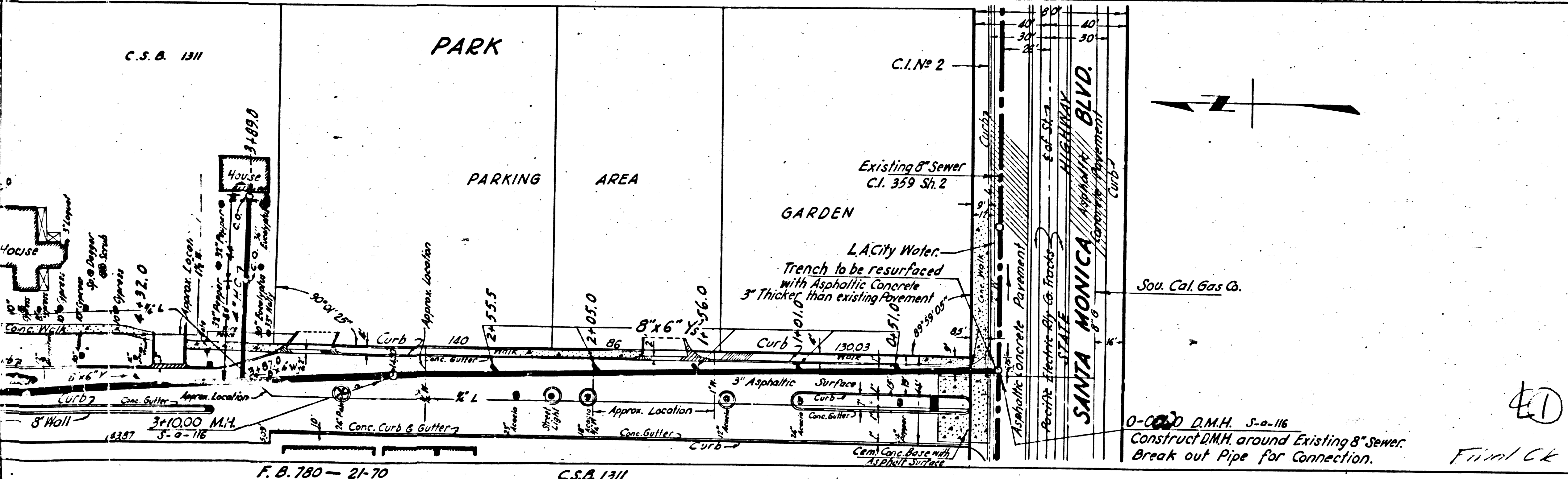
ALL STRUCTURES SHALL BE BRICK SEWER
STRUCTURES AS PER PLAN NO. S-a-104

ALL WORK TO BE PERFORMED UNDER THIS CONTRACT SHALL
BE IN ACCORDANCE WITH THE STANDARD SPECIFICATIONS FOR
THE CONSTRUCTION OF SANITARY SEWERS OR WATER MAINS
AND APPURTENANCES THERE TO, AND TRENCH AND STREET
RESURFACING, ON FILE IN THE OFFICE OF THE COUNTY
ENGINEER, 700 UNION LEAGUE BUILDING, LOS ANGELES 12,
CALIFORNIA.

ALL COSTS OF COUNTY INSPECTION WILL BE BORNE BY THE
CONTRACTOR AND WILL BE DEDUCTED FROM THE FINAL
PAYMENT FOR THIS CONTRACT.

PROFILE ALIGNMENT AND GRADE OF
SANITARY SEWERS
TO BE CONSTRUCTED IN
PLUMMER PARK
FROM SANTA MONICA BLVD. TO A POINT 812.61 FT. NORTHERLY
AND IN A PORTION OF
SANTA MONICA BOULEVARD

J.N. 5273
APRIL 1946
COUNTY OF LOS ANGELES CALIFORNIA
ALFRED JONES COUNTY ENGINEER

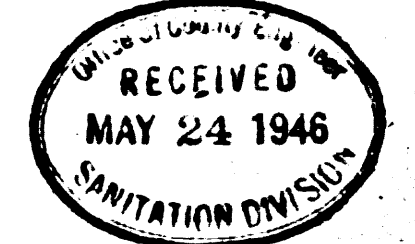


RECOMMENDED *Edmark* CHIEF DEPUTY
APPROVED *Alfred Jones* COUNTY ENGINEER
APPROVED *[Signature]* CHIEF ENGINEER OF COUNTY SANITATION DISTRICT NO. 6

FOR LEGEND
SEE PLAN NO. S-a-64

NOTE:
GRADES TO WHICH THIS IMPROVEMENT IS TO BE CONSTRUCTED ARE SHOWN ON PLANS AND PROFILES.
GRADE POINTS FOR TOP OF CURB, CENTER LINE OF STREET OR CENTER LINE OF ALLEY ARE SHOWN BY
CIRCLES ON PROFILES. AT ALL POINTS BETWEEN DESIGNATED POINTS THE GRADE SHALL BE ESTABLISHED
SO AS TO CONFORM TO A STRAIGHT LINE DRAWN BETWEEN SAID DESIGNATED POINTS.
ELEVATIONS ARE IN FEET ABOVE U. S. G. S. DATUM OR MEAN SEA LEVEL.
UNIT PRICES FOR ADDITIONAL WORK WHICH MAY BE REQUIRED BUT WHICH CANNOT BE ASCERTAINED
IN ADVANCE SHALL BE SUBMITTED IN THE PROPOSAL.
THIS DRAWING AND THE DATA HEREON ARE HEREBY MADE A PART OF THE SPECIFICATIONS.
FOR WORK DONE IN SANTA MONICA BLVD. A PERMIT MUST BE OBTAINED FROM THE STATE OF CALIFORNIA
DIVISION OF HIGHWAYS 808 STATE BLDG.

REFERENCES			
W. S. 22	DESIGNED	W.C.M. Laren	Mar. 1944
A. B.	TRACED	W.C.M. Laren	Mar. 1944
F. B. 780-21-70. C.S.B. 1311	CHECKED	N. Goldman	Mar. 1944



0-000 D.M.H. S-a-116
Construct DMH around Existing 8" Sewer.
Break out Pipe for Connection.

Final CK T.P. 7/2/46

PLUMMER PARK

C.S.B. 1311

ESSE MW
P.C. 249
ESSE MW

